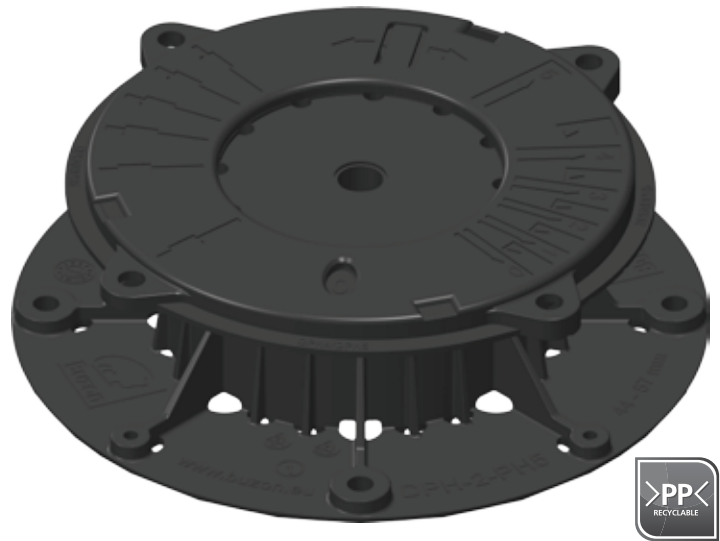
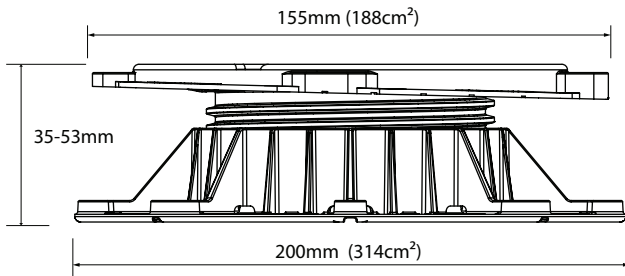


# DPH-2-PH5 - height 35-53mm



## Height range

Adjustable uninterrupted from 35 to 53mm with slope correction of 0-5%.

## Composition

The DPH-2-PH5 is comprised of 3 components (base, head and slope corrector).

## Material

Co-polymer polypropylene (CPP), material thickness 2 to 5mm.

Composition: 80% CPP **recycled**, 20% talc + UV master batch black, and 100% recyclable.

## Dimensions DPH-2-PH5

Top - diameter 155mm, surface area 188cm<sup>2</sup>

Base - diameter 200mm, surface area 314cm<sup>2</sup>.

## Performance characteristics

Resistant to aging, poor weather conditions, UV light, almost all chemicals, and rot proof.

Suitable for use in temperatures from -30°C to +90°C.

## Application

Support for raised decks. Can support any type of timber decking or ceramic, stone, concrete paving or flag material, as well as fibreglass or metal grid panels.

Suitable for any kind of stable substrate, including applications directly over insulation panels.

## Integral slope corrector

Pre-integrated in the head of the pedestal.

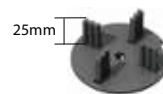
Provides slope correction from 0-5%

(in 0.5% increments).

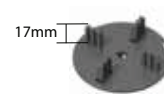


## Accessories

**Spacer tabs:** For achieving uniform gaps between used decking material. Available in 2, 3, 4.5, 6, 8 and 10mm. Fixed to top of pedestal by clipping in only. Tab heights : 17 or 25mm dependent on tile thickness.



Available with tab widths of 2, 4.5, 6, 8, and 10mm



Available with tab widths of 3 and 4.5mm

**Joist support:** Supports timber, aluminium or composite joists for most decking systems.



Joist max. 65mm  
Thickness 4mm

**Shim:** Enhances acoustic performance and can help leveling uneven paving materials.



1mm and 2mm  
thickness

EPDM -60 Shore

## Load capacity (1 daN = 1kg/f = 2.23lb/f)

Tests executed with load bearing on central (1/1), half (1/2) and quarter (1/4) position on the pedestal.

Position	Height (mm)	Slope	Load (daN)	Load (lbf)
1/1	53	5%	1541	3436
1/2	53	5%	976	2176
1/4	53	5%	490	1092

## Safety recommendation for use of Buzon Pedestals System :

1. Areas reserved for pedestrian access : divide the load indicated in the table by 2 with an addition safety factor of -15%.
2. Areas reserved for industrial and technical applications : divide the load indicated in the table by 4 with an addition safety factor of -15%.
3. The BUZON Pedestals System is not designed to support or be subjected to vibrating and/or moving machinery & equipment, including maintenance & cleaning vehicles, automobile & other vehicles, etc...