

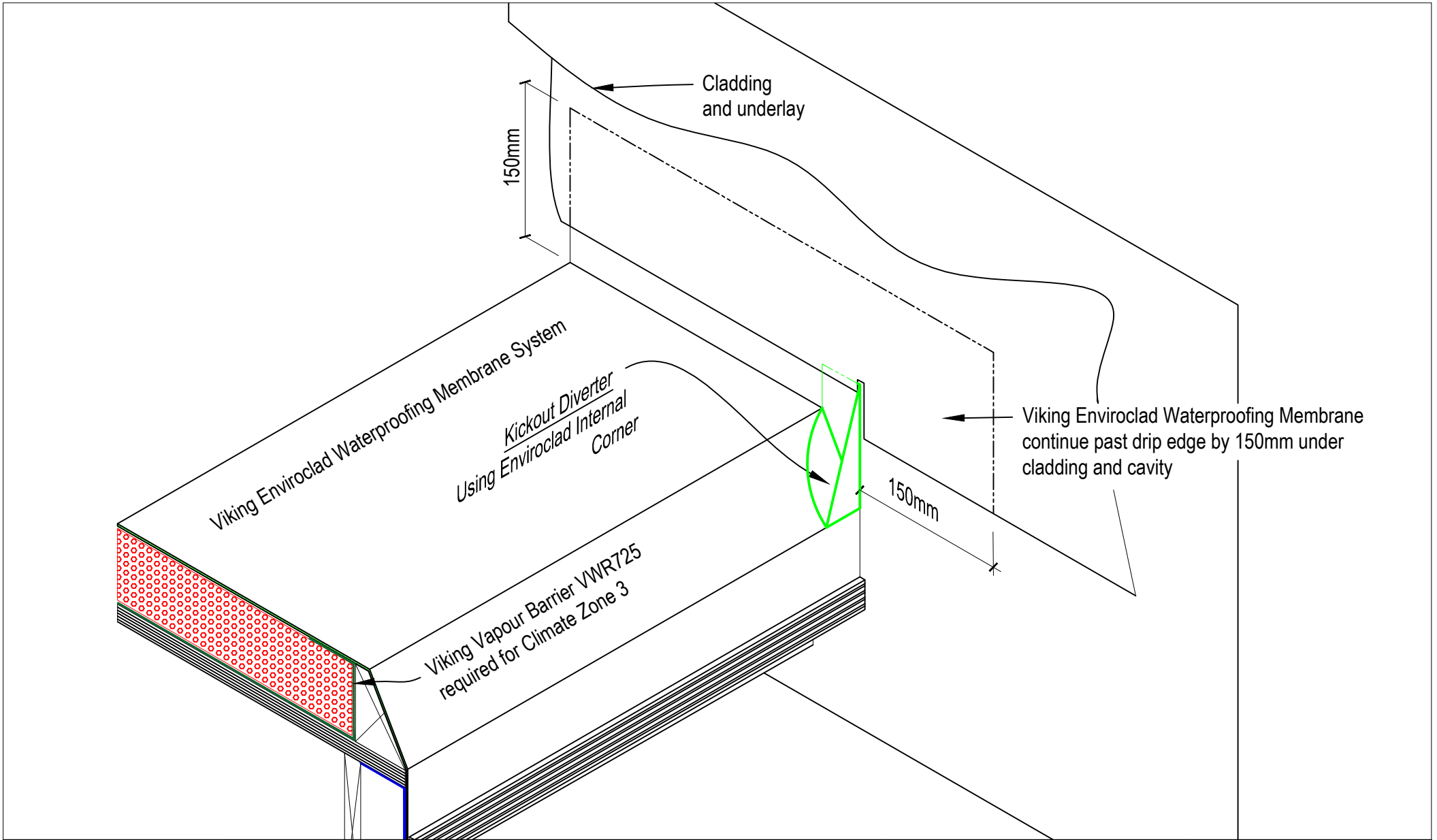
**NOTE:**  
The following details are advice for detailing of the Viking WarmRoof System specifically. For further waterproofing details refer to the Typical Details of the Viking Waterproofing System that you are specifying.



DRAWING TITLE
Viking WarmRoof with Enviroclad membrane Drip edge Detail

NOTES:
1/ Substrate is Indicative Only. 2/ Refer Enviroclad Typical Details for further waterproofing details.

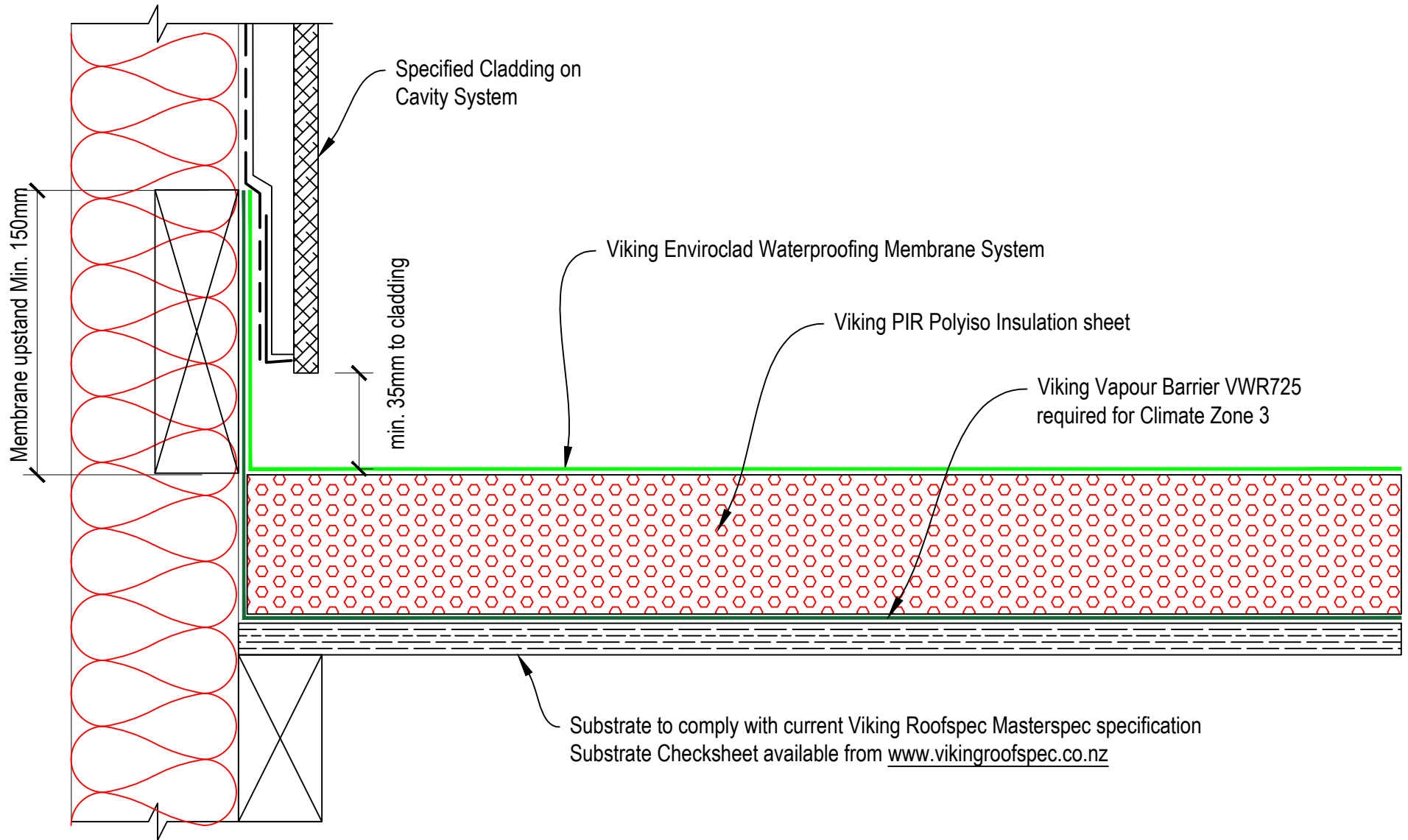
DRAWING STATUS		
INFORMATION ONLY		
Not to Scale	DATE 28/5/2018	Detail Ref.
DRAWN	Viking Roofspec	VWR01
SERIES	1.10	



DRAWING TITLE
Viking WarmRoof with Enviroclad membrane Drip edge Diverter Detail

NOTES:
1/ Substrate is Indicative Only. 2/ Refer Enviroclad Typical Details for further waterproofing details.

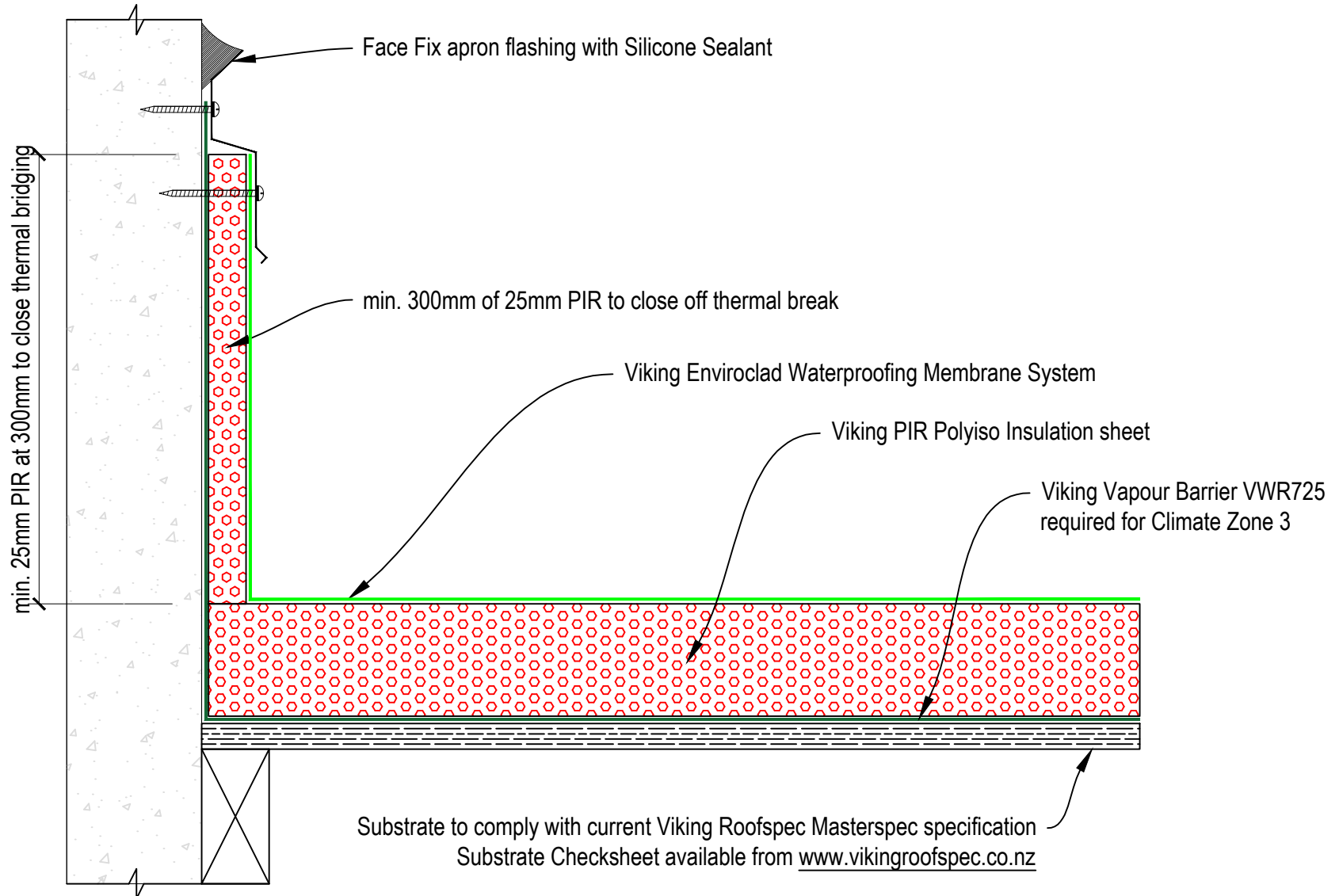
DRAWING STATUS		
INFORMATION ONLY		
Not to Scale	DATE 28/5/2018	Detail Ref.
DRAWN	Viking Roofspec	VWR02
SERIES	1.10	



DRAWING TITLE
Viking WarmRoof with Enviroclad membrane Upstand behind Cladding

NOTES:
1/ Substrate is Indicative Only. 2/ Refer Enviroclad Typical Details for further waterproofing details.

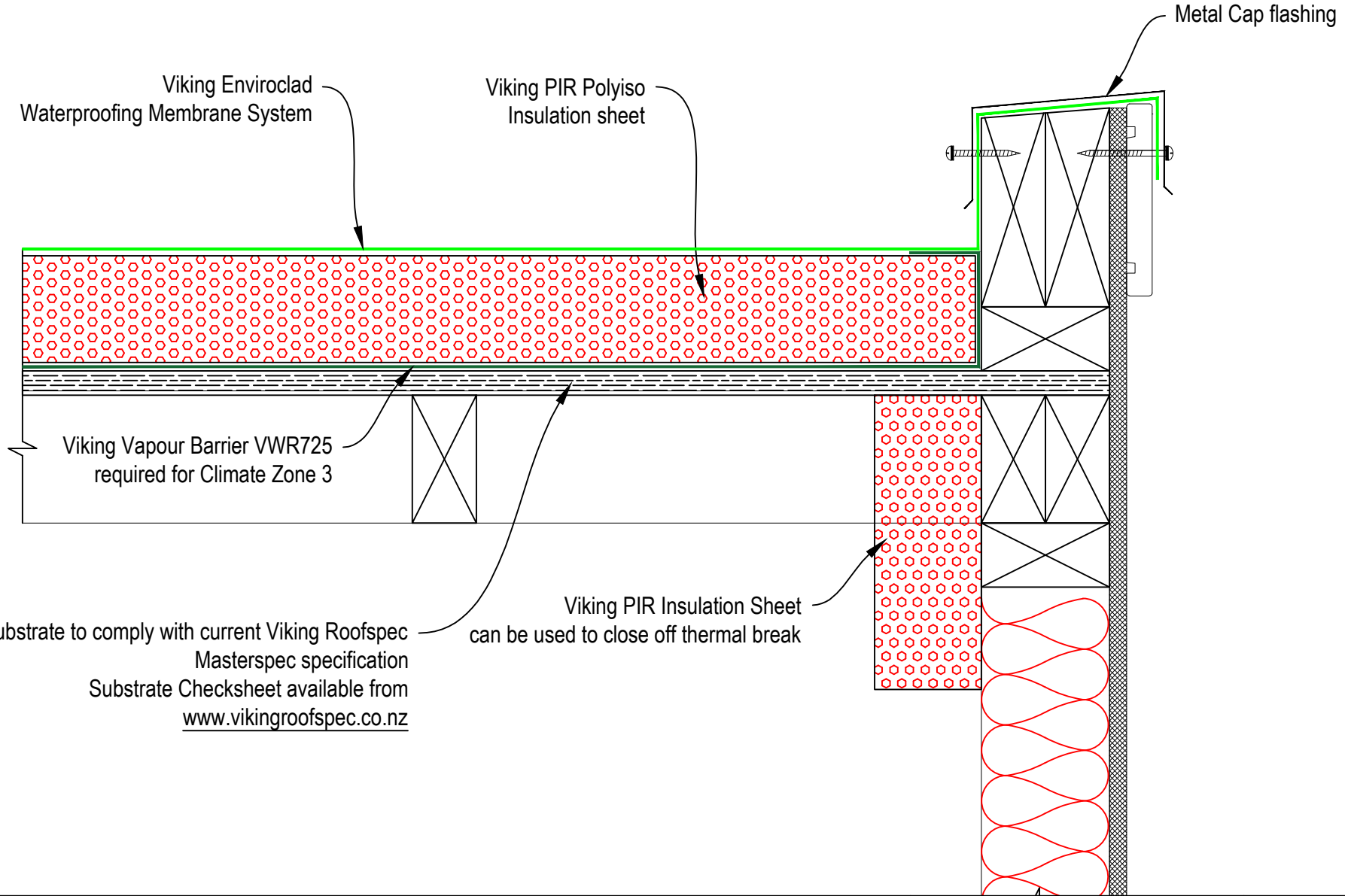
DRAWING STATUS		
INFORMATION ONLY		
Not to Scale	DATE 28/5/2018	Detail Ref.
DRAWN	Viking Roofspec	VWR03
SERIES	1.10	



DRAWING TITLE
Viking WarmRoof with Enviroclad membrane Face fixed Upstand

NOTES:
1/ Substrate is Indicative Only. 2/ Refer Enviroclad Typical Details for further waterproofing details.

DRAWING STATUS		
INFORMATION ONLY		
Not to Scale	DATE 28/5/2018	Detail Ref.
DRAWN	Viking Roofspec	VWR04
SERIES	1.10	



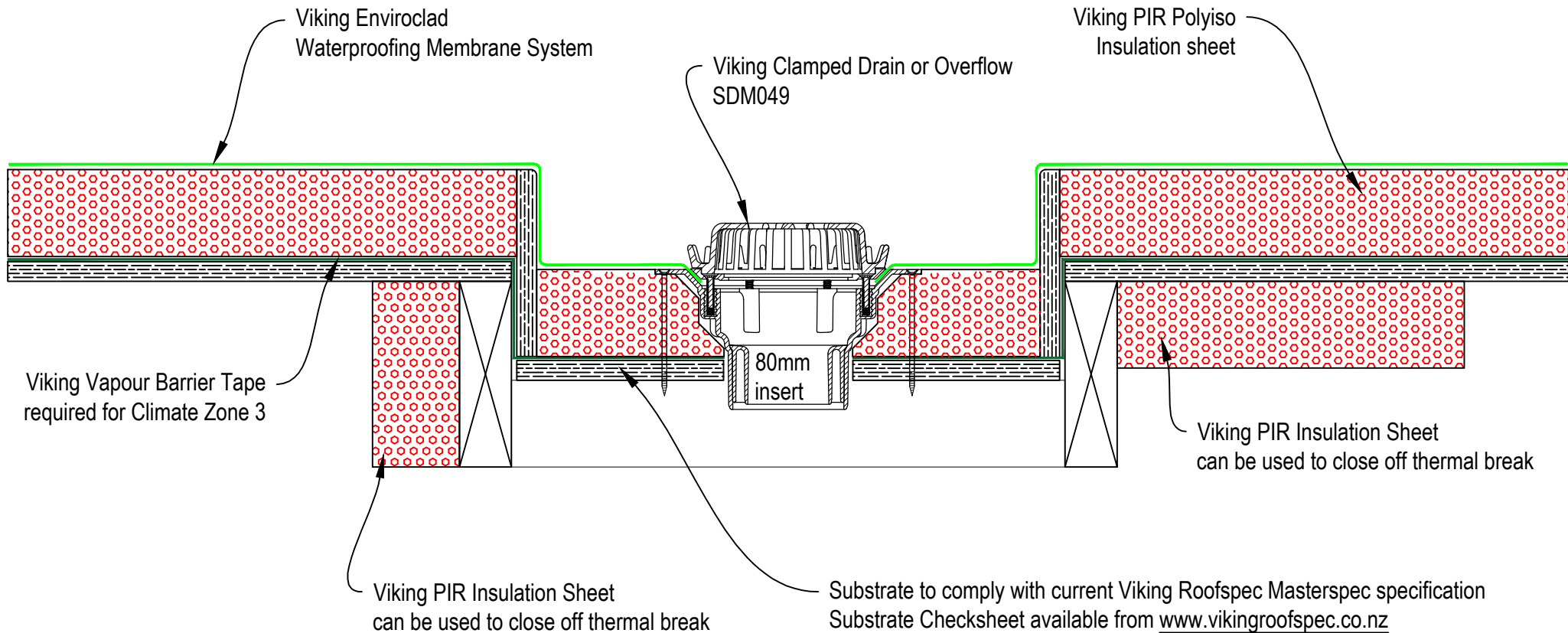
Substrate to comply with current Viking Roofspec Masterspec specification  
 Substrate Checksheet available from [www.vikingroofspec.co.nz](http://www.vikingroofspec.co.nz)



DRAWING TITLE
Viking WarmRoof with Enviroclad membrane Parapet

NOTES:
1/ Substrate is Indicative Only. 2/ Refer Enviroclad Typical Details for further waterproofing details.

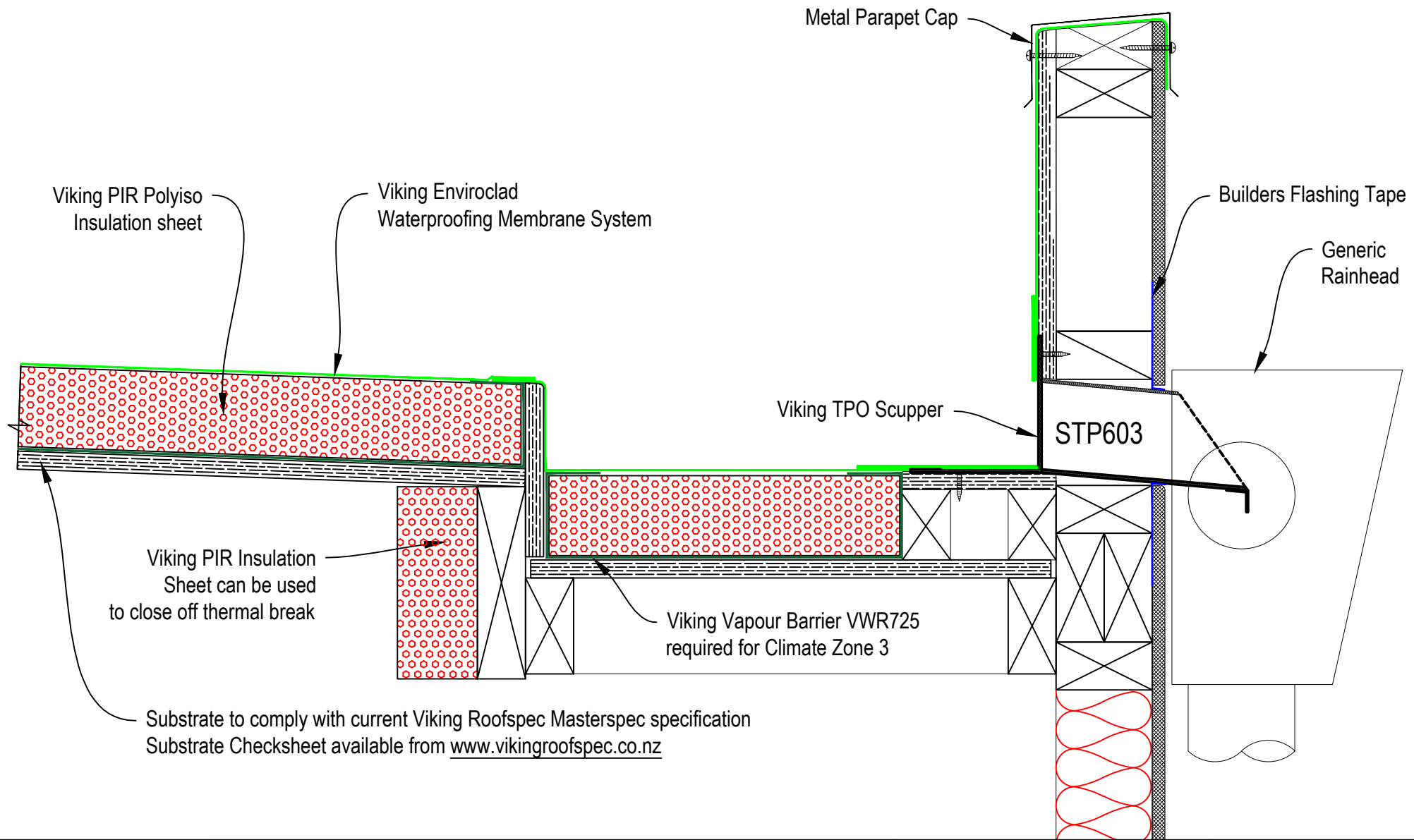
DRAWING STATUS		
INFORMATION ONLY		
Not to Scale	DATE 28/5/2018	Detail Ref.
DRAWN	Viking Roofspec	VWR05
SERIES	1.10	



DRAWING TITLE
Viking WarmRoof with Enviroclad membrane Internal Gutter with Clamped Outlet or Overflow

NOTES:
1/ Substrate is Indicative Only. 2/ Refer Enviroclad Typical Details for further waterproofing details.

DRAWING STATUS		
INFORMATION ONLY		
Not to Scale	DATE 28/5/2018	Detail Ref.
DRAWN	Viking Roofspec	VWR06
SERIES	1.10	



Viking PIR Polyiso Insulation sheet

Viking Enviroclad Waterproofing Membrane System

Metal Parapet Cap

Builders Flashing Tape

Generic Rainhead

Viking TPO Scupper

STP603

Viking PIR Insulation Sheet can be used to close off thermal break

Viking Vapour Barrier VWR725 required for Climate Zone 3

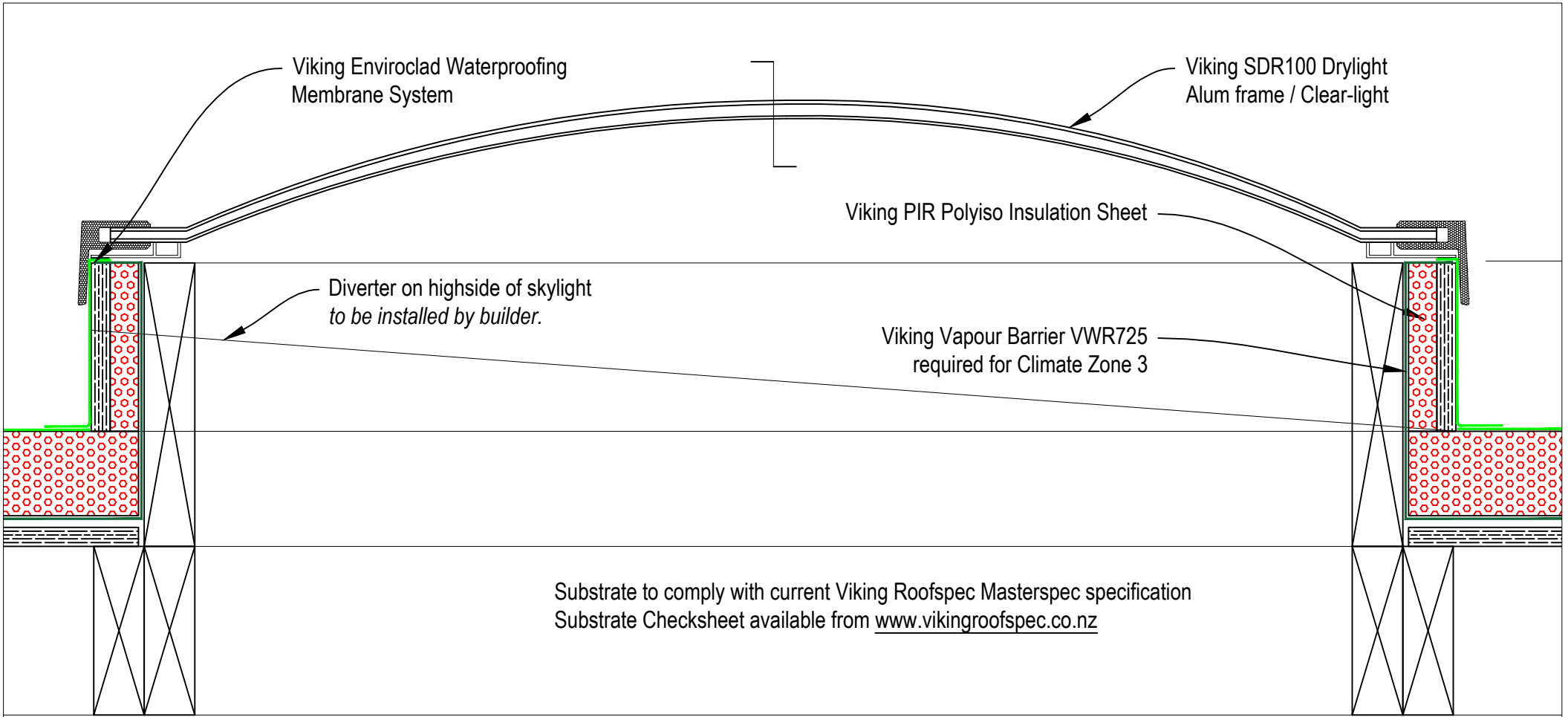
Substrate to comply with current Viking Roofspec Masterspec specification  
Substrate Checksheet available from [www.vikingroofspec.co.nz](http://www.vikingroofspec.co.nz)



DRAWING TITLE
Viking WarmRoof with Enviroclad membrane Scupper Outlet

NOTES:
1/ Substrate is Indicative Only. 2/ Refer Enviroclad Typical Details for further waterproofing details.

DRAWING STATUS		
INFORMATION ONLY		
Not to Scale	DATE 28/5/2018	Detail Ref.
DRAWN	Viking Roofspec	VWR07
SERIES	1.10	



Substrate to comply with current Viking Roofspec Masterspec specification  
 Substrate Checksheet available from [www.vikingroofspec.co.nz](http://www.vikingroofspec.co.nz)

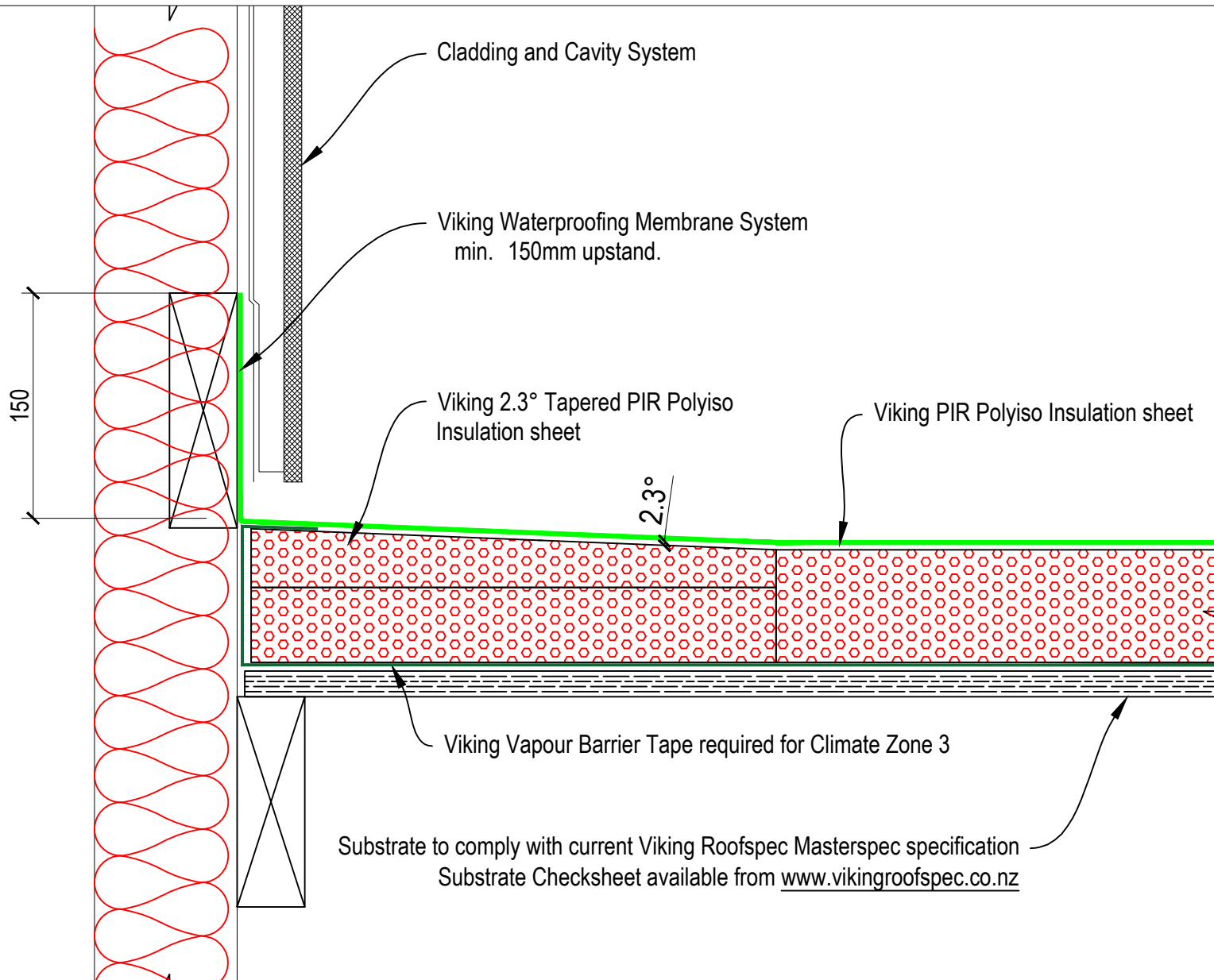


DRAWING TITLE
Viking WarmRoof with Enviroclad membrane Skylight

NOTES:
1/ Substrate is Indicative Only. 2/ Refer Enviroclad Typical Details for further waterproofing details.

DRAWING STATUS		
INFORMATION ONLY		
Not to Scale	DATE 28/5/2018	Detail Ref.
DRAWN	Viking Roofspec	VWR08
SERIES	1.10	

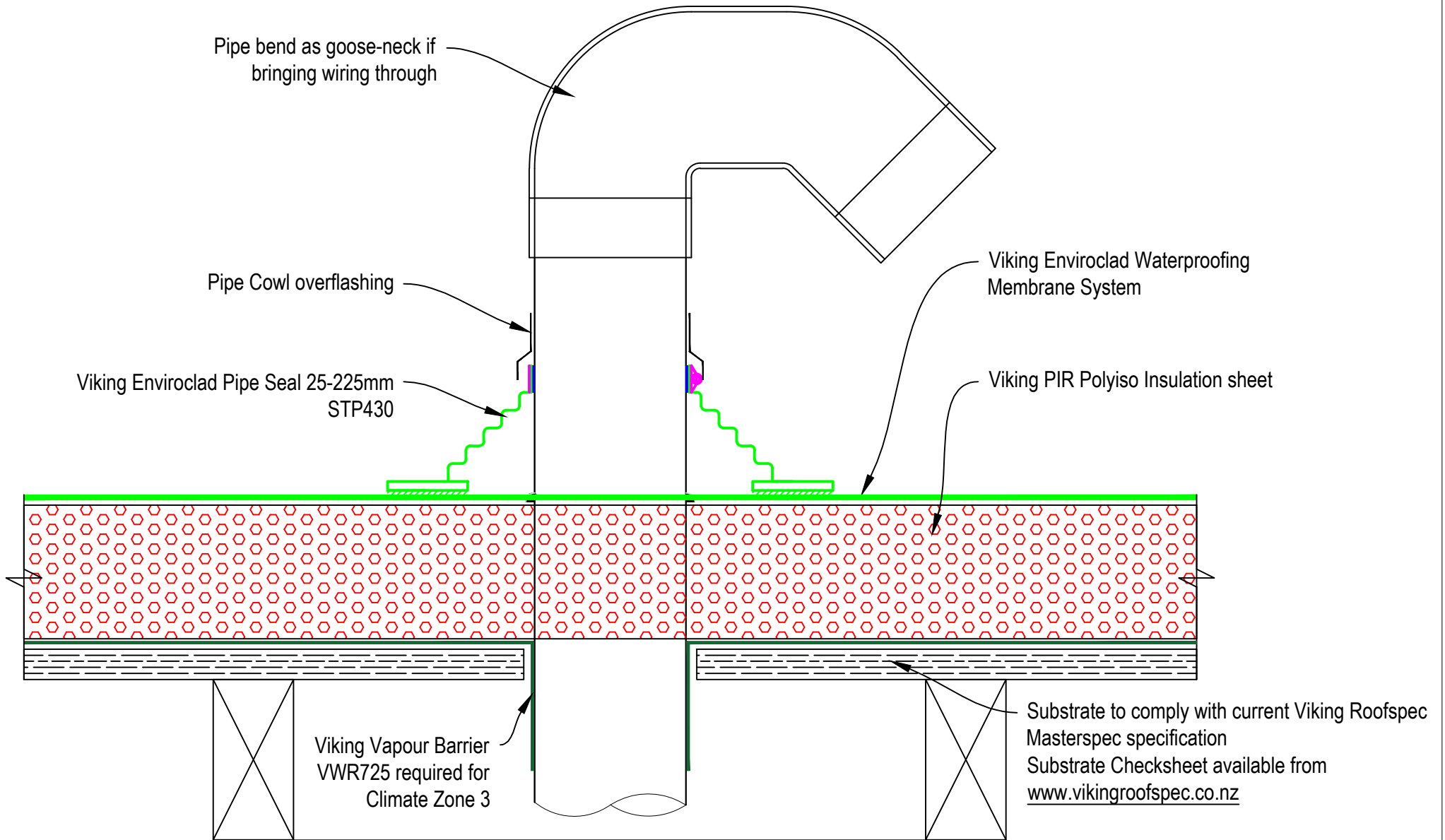




DRAWING TITLE
Viking WarmRoof with Enviroclad membrane Cricket to diverter water with PIR sheet

NOTES:
1/ Substrate is Indicative Only. 2/ Refer Enviroclad Typical Details for further waterproofing details.

DRAWING STATUS		
INFORMATION ONLY		
Not to Scale	DATE 28/5/2018	Detail Ref.
DRAWN	Viking Roofspec	VWR09
SERIES	1.10	



DRAWING TITLE
Viking WarmRoof with Enviroclad membrane Pipe penetration

NOTES:
1/ Substrate is Indicative Only. 2/ Refer Enviroclad Typical Details for further waterproofing details.

DRAWING STATUS		
INFORMATION ONLY		
Not to Scale	DATE 28/5/2018	Detail Ref.
DRAWN	Viking Roofspec	VWR10
SERIES	1.10	

Viking Enviroclad  
Waterproofing Membrane System

Viking PIR Polyiso  
Insulation sheet

Bracket / Bolt with compression washers  
both sides of bracket. By others

SET153 Flashing Tape  
as Gasket

Viking Vapour Barrier VWR725  
required for Climate Zone 3

Substrate to comply with current Viking Roofspec Masterspec specification  
Substrate Checksheet available from [www.vikingroofspec.co.nz](http://www.vikingroofspec.co.nz)

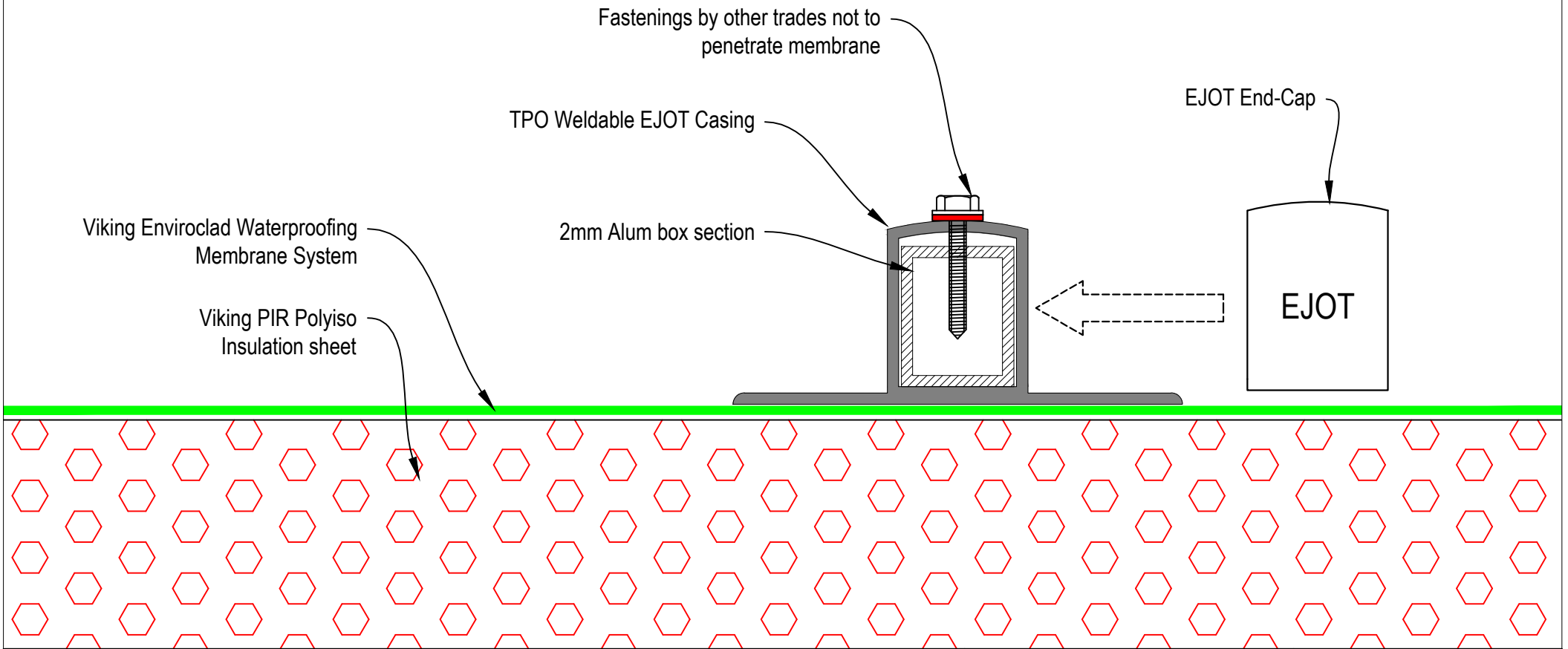


DRAWING TITLE
Viking WarmRoof with Enviroclad membrane Plinths

NOTES:
1/ Substrate is Indicative Only. 2/ Refer Enviroclad Typical Details for further waterproofing details.

DRAWING STATUS		
INFORMATION ONLY		
Not to Scale	DATE 28/5/2018	Detail Ref.
DRAWN	Viking Roofspec	VWR11
SERIES	1.10	

Creates a LOW-RISK fixing base for light-weight mechanical and electrical essentials such as pipework and cable trays - through to light weight solar PV and solar thermal installations.

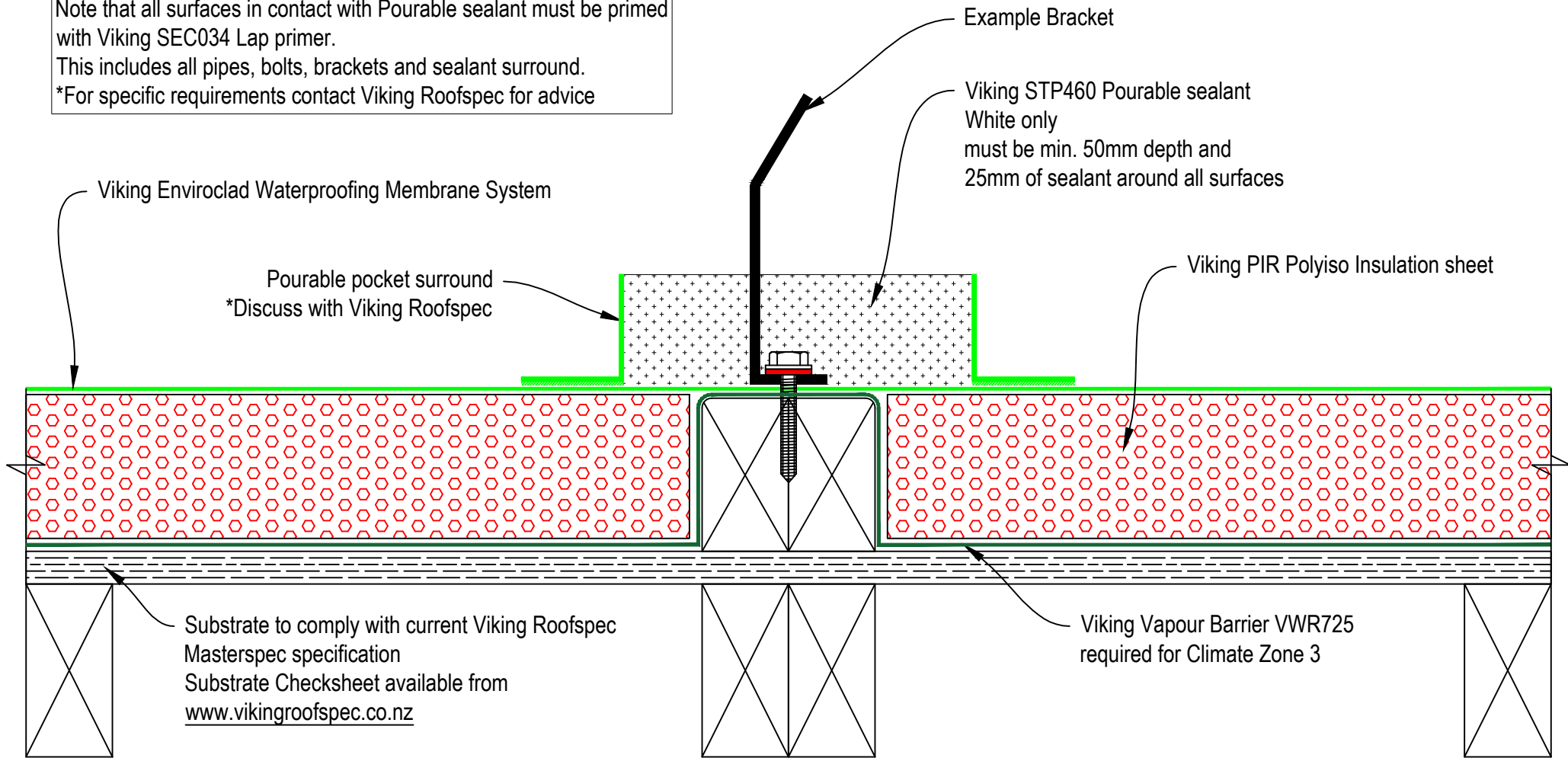


DRAWING TITLE
Viking WarmRoof with Enviroclad membrane EJOT weldable bar for fixing of light mechanical and electrical essentials

NOTES:
1/ Substrate is Indicative Only. 2/ Refer Enviroclad Typical Details for further waterproofing details.

DRAWING STATUS		
INFORMATION ONLY		
Not to Scale	DATE 24/10/2018	Detail Ref.
DRAWN	Viking Roofspec	VWR11A
SERIES	1.10	

A solution for very difficult shaped penetrations.  
 Note that all surfaces in contact with Pourable sealant must be primed with Viking SEC034 Lap primer.  
 This includes all pipes, bolts, brackets and sealant surround.  
 \*For specific requirements contact Viking Roofspec for advice

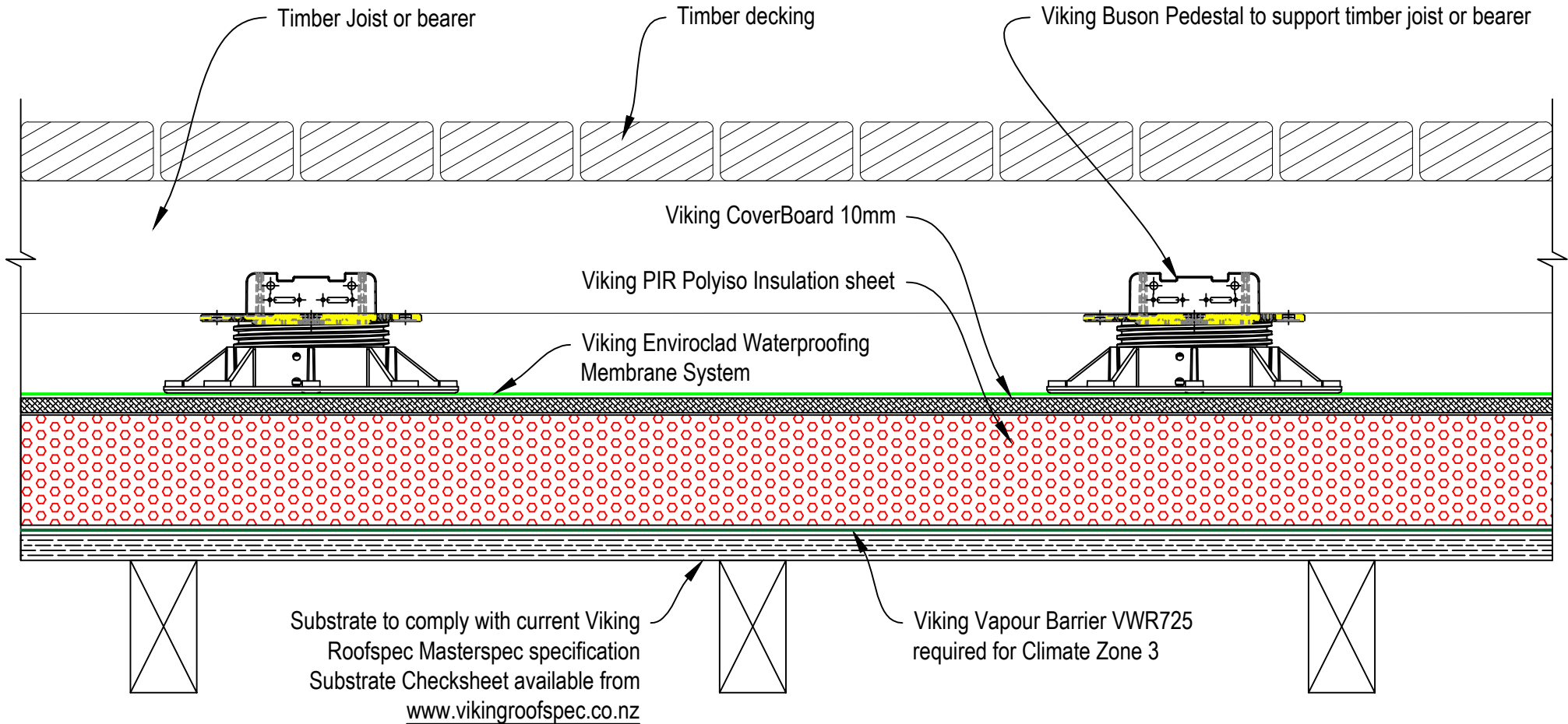


DRAWING TITLE
Viking WarmRoof with Enviroclad membrane Pourable Pocket

NOTES:
1/ Substrate is Indicative Only. 2/ Refer Enviroclad Typical Details for further waterproofing details.

DRAWING STATUS		
INFORMATION ONLY		
Not to Scale	DATE 28/5/2018	Detail Ref.
DRAWN	Viking Roofspec	VWR12
SERIES	1.10	

Note: For floating trafficable decks install Viking Cover-board between PIR insulation and membrane.

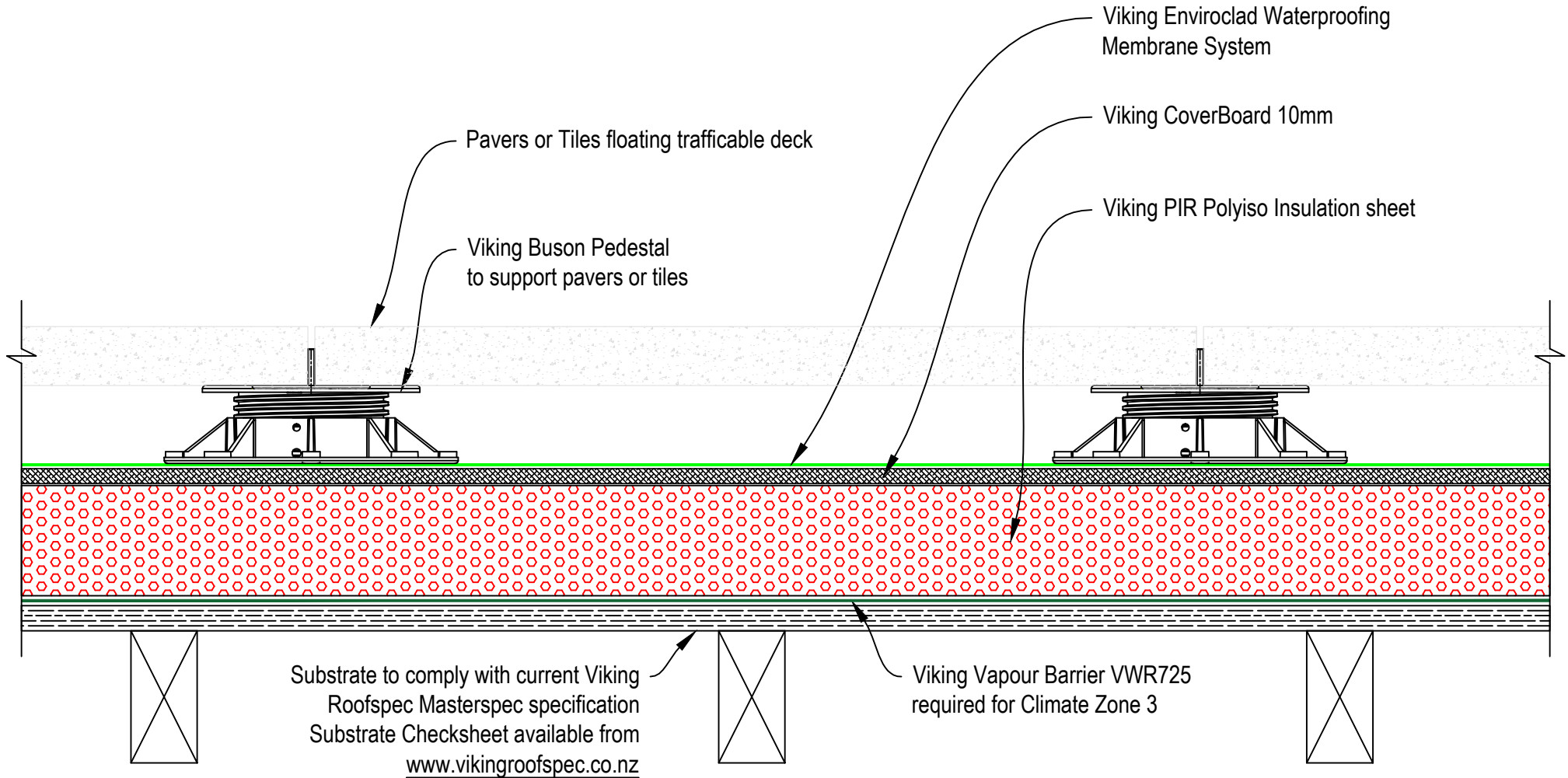


DRAWING TITLE
Viking WarmRoof with Enviroclad membrane Pedestal system with Timer deck over WarmRoof

NOTES:
1/ Substrate is Indicative Only. 2/ Refer Enviroclad Typical Details for further waterproofing details.

DRAWING STATUS		
INFORMATION ONLY		
Not to Scale	DATE 28/5/2018	Detail Ref.
DRAWN	Viking Roofspec	VWR13
SERIES	1.10	

Note: For floating trafficable decks install Viking Cover-board between PIR insulation and membrane.



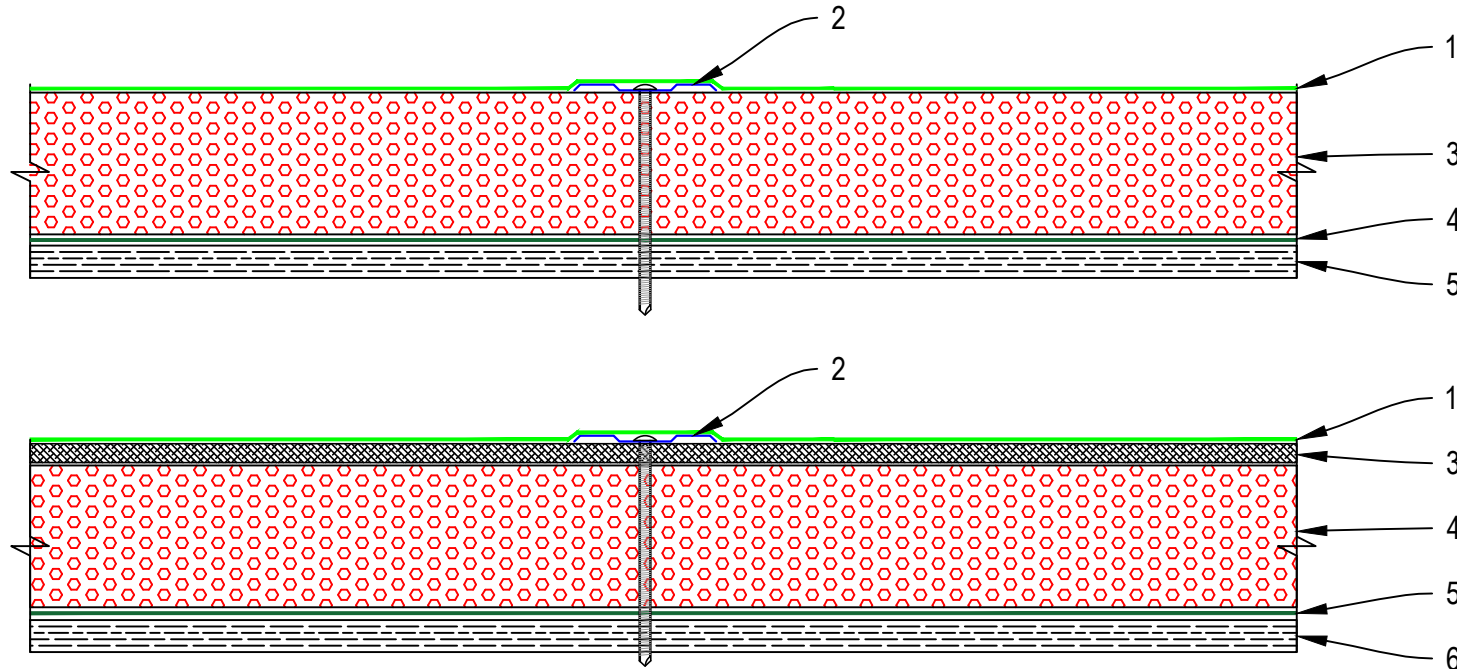
DRAWING TITLE	
Viking WarmRoof with Enviroclad membrane Pedestal system with Tiles over WarmRoof	

NOTES:
1/ Substrate is Indicative Only. 2/ Refer Enviroclad Typical Details for further waterproofing details.

DRAWING STATUS		
INFORMATION ONLY		
Not to Scale	DATE 28/5/2018	Detail Ref.
DRAWN	Viking Roofspec	VWR14
SERIES	1.10	

**LEGEND:**

- 1: Viking Enviroclad Waterproofing Membrane
- 2: Viking Polyiso Plate 75mm with fixing. Refer Polyiso Attachment Patterns for fixing centres.
- 3: Viking CoverBoard 10mm
- 4: Polyiso Plate and Fastener. Viking PIR Polyiso Insulation sheet
- 5: Viking Vapour Barrier VWR725 required for Climate Zone 3
- 6: Substrate to comply with current Viking Roofspec Masterspec specification. Substrate Checksheet available from [www.vikingroofspec.co.nz](http://www.vikingroofspec.co.nz)



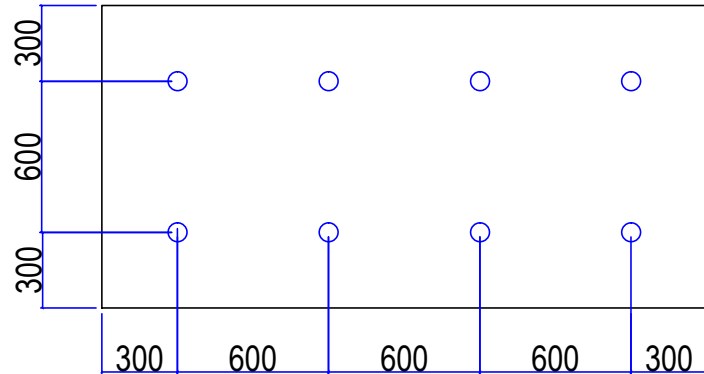
DRAWING TITLE
Viking WarmRoof with Enviroclad membrane Mechanical Fix PIR

NOTES:
1/ Substrate is Indicative Only. 2/ Refer Enviroclad Typical Details for further waterproofing details.

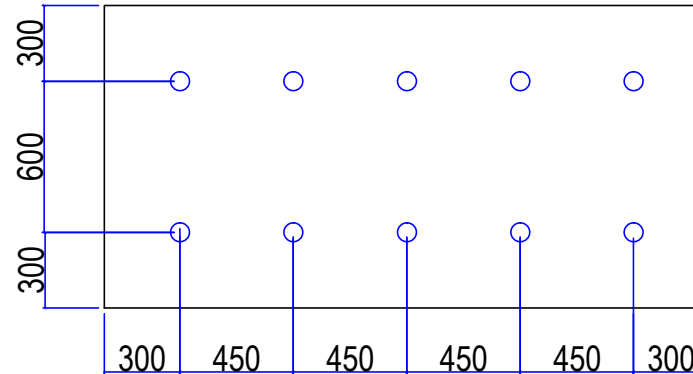
DRAWING STATUS		
INFORMATION ONLY		
Not to Scale	DATE 28/5/2018	Detail Ref.
DRAWN	Viking Roofspec	VWR15
SERIES	1.10	



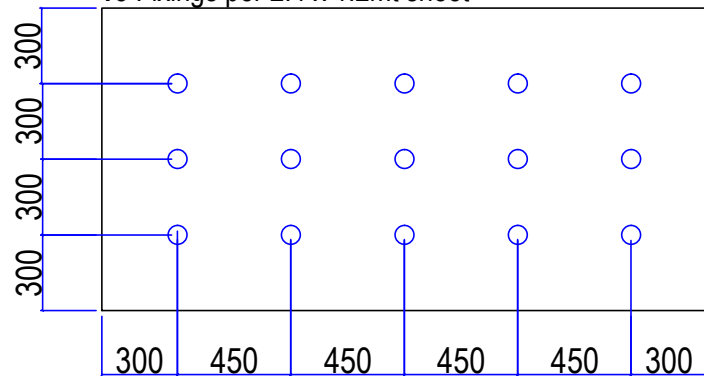
**Field of Roof PIR fixing centres**  
8 Fixings per 2.4 x 1.2mt sheet



**Perimeter of Roof PIR fixing centres**  
10 Fixings per 2.4 x 1.2mt sheet  
- Perimeter Area 2.4mt from roof edge



**Corner of Roof PIR fixing centres**  
15 Fixings per 2.4 x 1.2mt sheet



DRAWING TITLE
Viking WarmRoof Polyiso Attachment Patterns for Mechanical Fix of PIR

NOTES:
1/ Substrate is Indicative Only. 2/ Refer Enviroclad Typical Details for further waterproofing details.

DRAWING STATUS		
INFORMATION ONLY		
Not to Scale	DATE 09/4/2019	Detail Ref.
DRAWN	Viking Roofspec	Pattern
SERIES	1.10	