

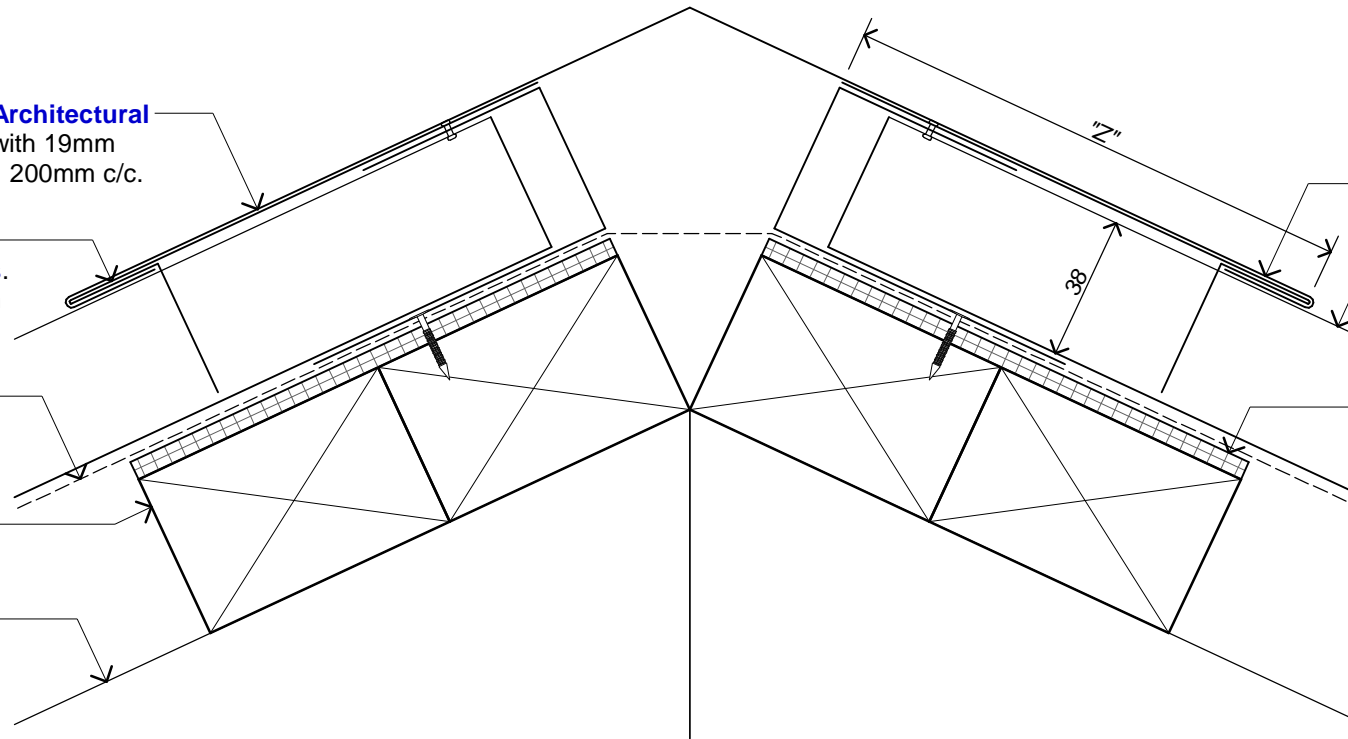
Metal End Cap Flashing by **Architectural Metalformers**. Fix to purlin with 19mm S/S annular grooved nails @ 200mm c/c.

Metal Trim Flashing by **Architectural Metalformers**. Fix to End Cap Flashing with Rivets @ 250mm c/c.

Selected Coverttek Roofing underlay by **Architectural Metalformers**.

Double Timber Purlins to Architects specification.

Timber Rafter/Truss to Architects specification.



Metal Ridge/Hip Flashing by **Architectural Metalformers**.

Lock Seam Metal Roof Panels by **Architectural Metalformers** on selected Coverttek underlay.

Continuous 5mm Corflute bearing strip to all purlins.

"Z" as per Table 7 NZBC E2/AS1

- 130mm width in Low, Medium, High Wind Zones, where roof pitch $\geq 10^\circ$.
- 200mm width for all roof pitches in Very High and Extra High Wind Zones.
- 200mm width in Low, Medium and High Wind Zones where roof pitch $\leq 10^\circ$.



**architectural
metalformers**



smart tray™ Roofing & Cladding

Profile Type:

**Lock Seam Roof
Hip & Ridge Flashing (Unvented)**

Scale:

1:2

Drawing No.

LS-50

Revision:

A

Date:

2016

Roofing underlay laps onto Drip Edge Flashing with 75mm min. cover.

Metal Drip Edge Flashing by **Architectural Metalformers** laid on 5mm Corflute bearing strip. Fix through Corflute to purlin with 19mm S/S annular grooved nails @ 200mm c/c.

Continuous 5mm Corflute bearing strip.

Selected Metal Spouting by **Architectural Metalformers** laid to falls.

← Lock Seam Metal Roof Panels by **Architectural Metalformers** on selected Covertek underlay.

← Double Timber Purlins to Architects specification.

← Timber Rafter/Truss to Architects specification.

← Timber Fascia to Architects specification.

← Timber Soffit Bearer to Architects specification.

← Selected Soffit Linings to Architects specification.



**architectural
metalformers**



smart tray™ Roofing & Cladding

Profile Type:

Lock Seam Roof
Drip Edge Flashing (Unvented)

Scale:

1:2

Drawing No.

LS-51

Revision:

A

Date:

2016

Selected Metal Trim Flashing by **Architectural Metalformers** fixed with 19mm S/S annular grooved nails.

Continuous 5mm Corflute bearing strip.

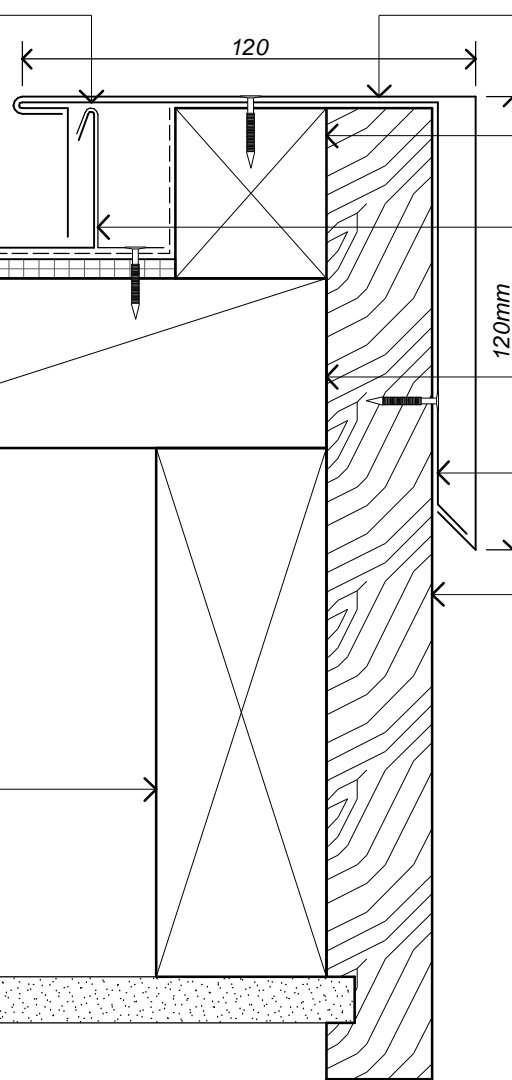
Lock Seam Metal Roof Panels by **Architectural Metalformers** on selected Covertek underlay.

Timber Purlins to Architects specification.

Timber Flying Rafter to Architects specification.

Timber Outrigger to Architects specification.

Selected Soffit Linings to Architects specification.



Selected Metal Barge Flashing by **Architectural Metalformers** fixed over concealed Clip Fixings.

45 x 40 Timber Batten fixed to Purlins to Architects specification.

S/S bracket fixed with 19mm S/S annular grooved nails.

Timber Nogging as required to Architects specification.

Selected Metal Trim Flashing by **Architectural Metalformers** fixed with 19mm S/S annular grooved nails.

Timber Barge Board to Architects specification.



**architectural
metalformers**



smart tray™ Roofing & Cladding

Profile Type:

**Lock Seam Roof
Barge Detail (Option A)**

Scale:

1:2

Drawing No.

LS-52

Revision:

A

Date:

2016

Selected Metal Trim Flashing by **Architectural Metalformers** fixed with 19mm S/S annular grooved nails.

Continuous 5mm Corflute bearing strip.

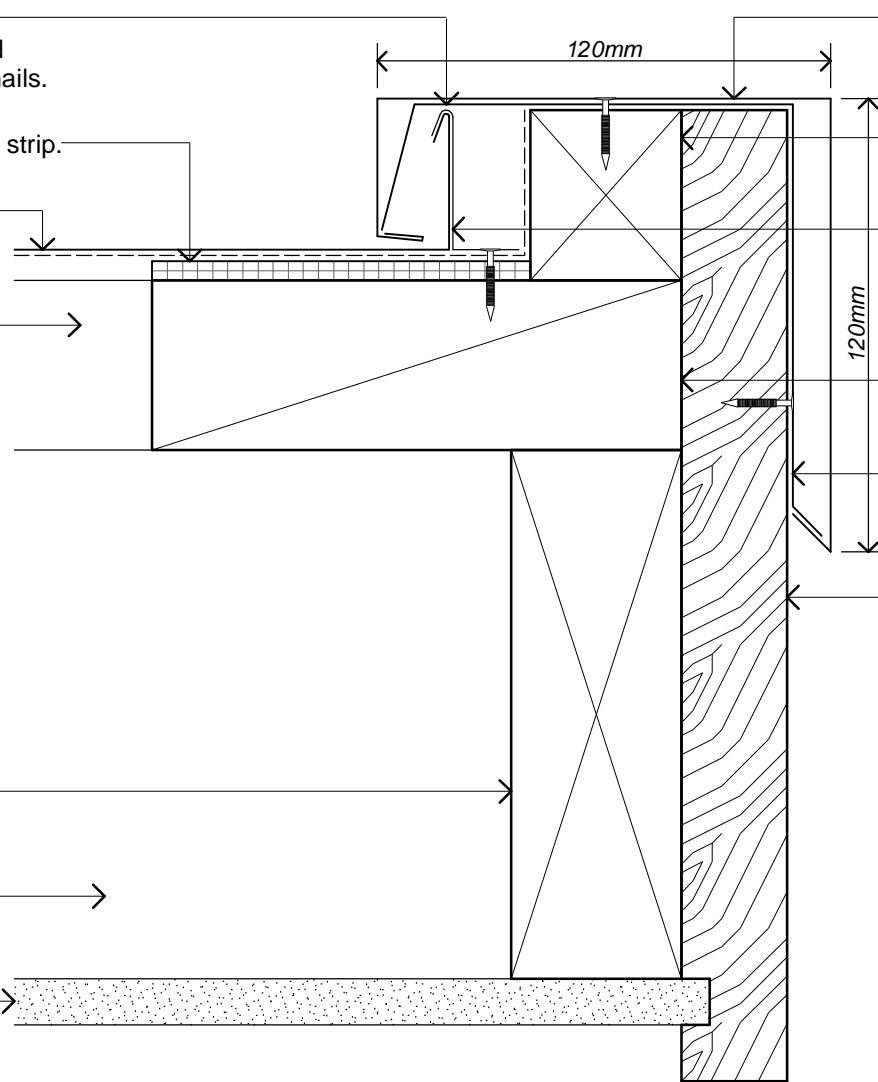
Lock Seam Metal Roof Panels by **Architectural Metalformers** on selected Covertek underlay.

Timber Purlins to Architects specification.

Timber Flying Rafter to Architects specification.

Timber Outrigger to Architects specification.

Selected Soffit Linings to Architects specification.



Selected Metal Barge Flashing by **Architectural Metalformers** fixed over concealed Clip Fixings.

45 x 40 Timber Batten fixed to Purlins to Architects specification.

S/S bracket fixed with 19mm S/S annular grooved nails.

Timber Noggings as required to Architects specification.

Selected Metal Trim Flashing by **Architectural Metalformers** fixed with 19mm S/S annular grooved nails.

Timber Barge Board to Architects specification.



**architectural
metalformers**



smart tray™ Roofing & Cladding

Profile Type:

**Lock Seam Roof
Barge Detail (Option B)**

Scale: 1:2

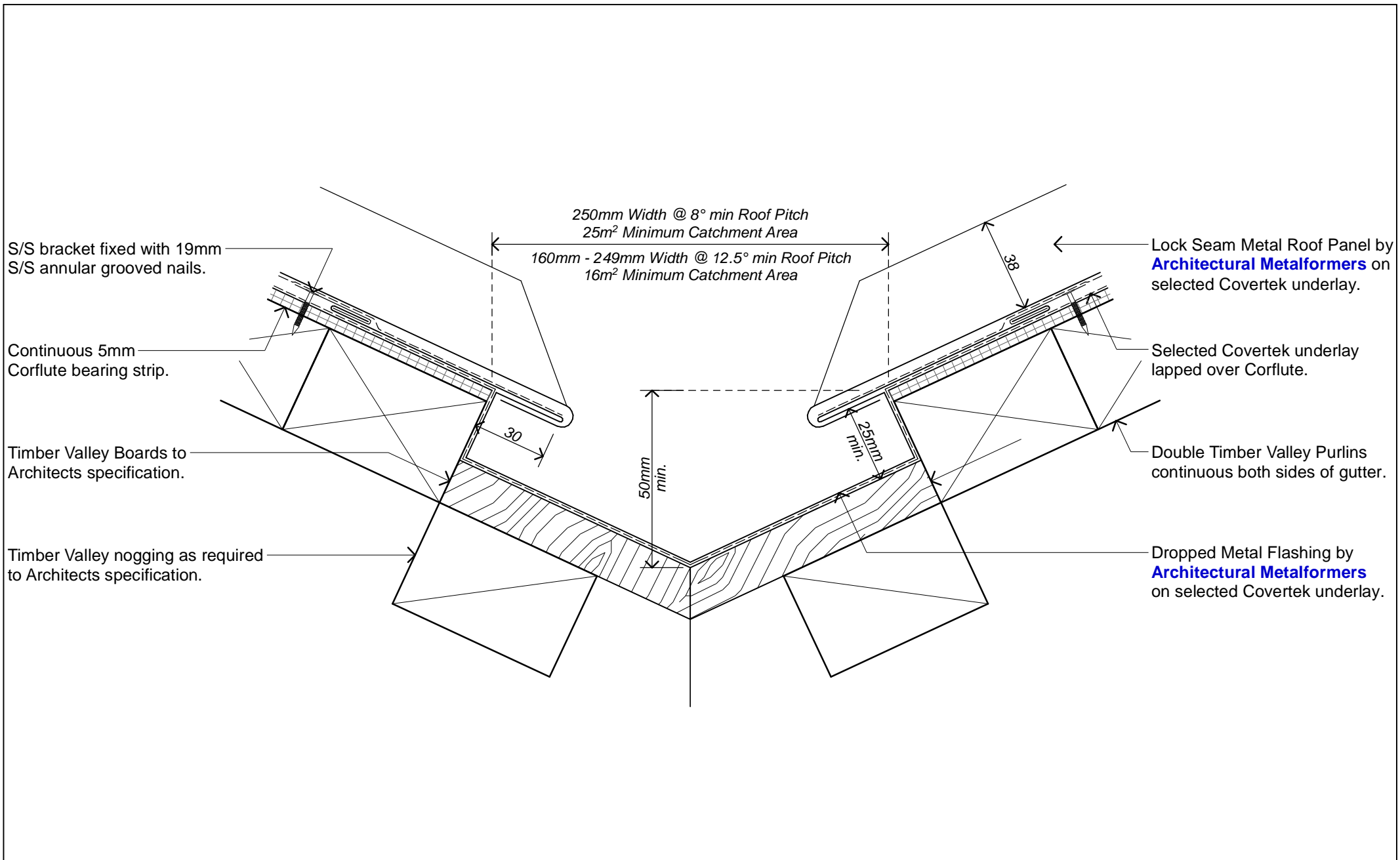
Drawing No.

Revision:

Date: 2016

LS-53

A



**architectural
metalformers**



smart tray™ Roofing & Cladding

Profile Type:

**Lock Seam Roof
Dropped Valley**

Scale: 1:2

Drawing No.

Revision:

Date: 2016

LS-54

A

Disclaimer: All details are to be used for indicative purposes only and the designer should consult both the MRM code of practice version 2.2 (2012, E2 and all other relevant building codes. Details of the supporting mechanisms are indicative only. Compliance of the supporting mechanisms is the responsibility of the designer. Construction detail can vary for wall dadding. The underlay is detailed as a single line for simplicity and is indicative only. Building paper type and method of installation should comply with underlay manufacturers recommendations and NZBC regulations.

NOTE: Cavity battens to be Rosenfeld Kidson CS-H 45 x 45mm H3.1 treated castellated structural cavity battens fixed horizontally @ 450mm max. centres.

Lock Seam Metal Wall Cladding by **Architectural Metalformers** on selected Covertek underlay.

Selected Breather Type Building Wrap turns out over Apron Flashing.

Rosenfeld Kidson CS-H 45 x 65mm H3.1 treated castellated structural cavity batten with 3mm face rebate as required for cladding buildup.

Folded cavity closer/panel starter by **Architectural Metalformers**. Punched cavity closer providing 1000mm² of ventilation per lineal metre.

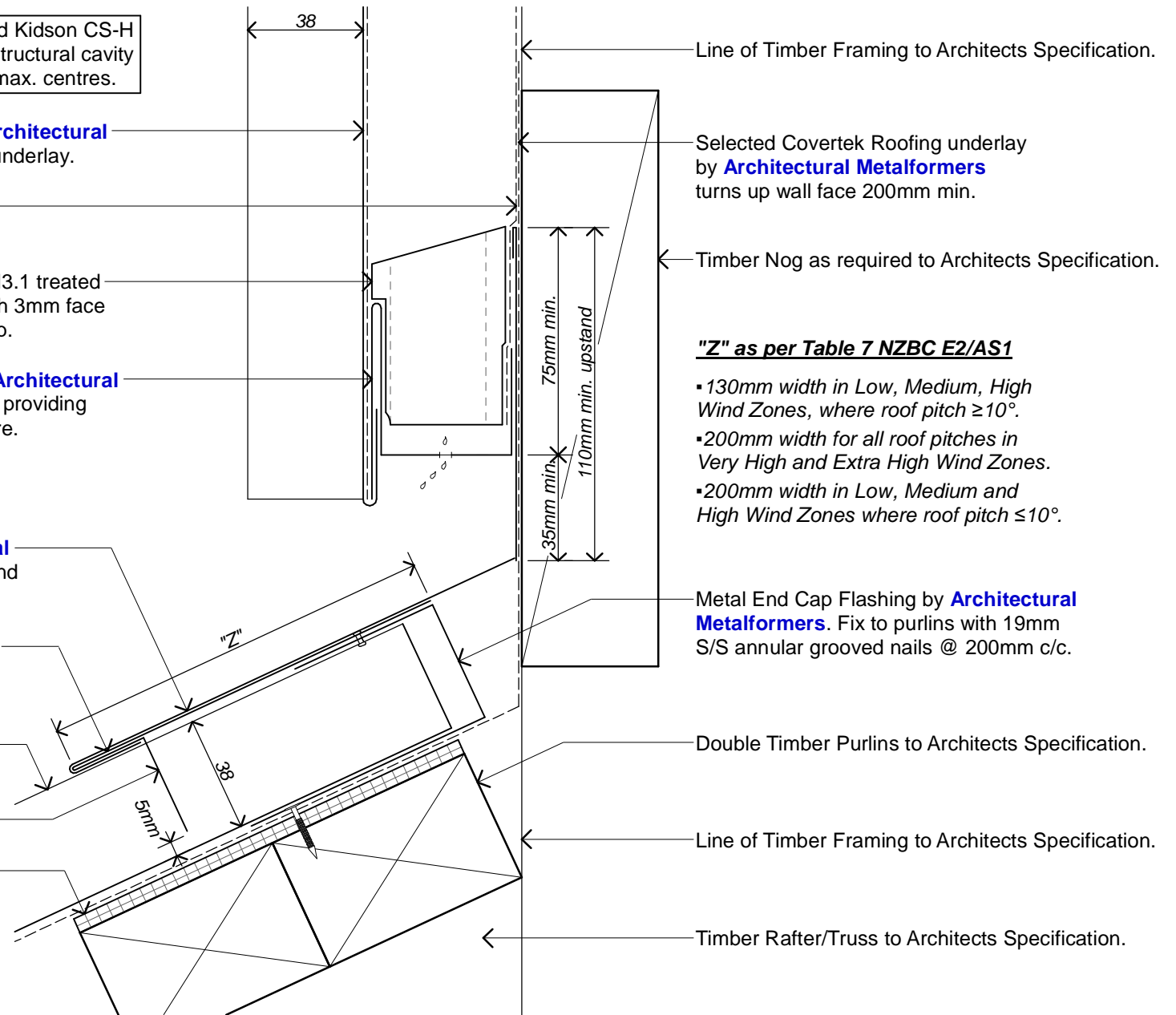
Metal Apron Flashing by **Architectural Metalformers** with 110mm min upstand up wall behind cladding.

Metal Trim Flashing by **Architectural Metalformers**. Fix to End Cap Flashing with Rivits @ 250mm c/c.

Lock Seam Metal Roof Panels by **Architectural Metalformers**.

5mm min. gap to notched turn-down.

Continuous 5mm Corflute bearing strip to all purlins.



Line of Timber Framing to Architects Specification.

Selected Covertek Roofing underlay by **Architectural Metalformers** turns up wall face 200mm min.

Timber Nog as required to Architects Specification.

"Z" as per Table 7 NZBC E2/AS1

- 130mm width in Low, Medium, High Wind Zones, where roof pitch $\geq 10^\circ$.
- 200mm width for all roof pitches in Very High and Extra High Wind Zones.
- 200mm width in Low, Medium and High Wind Zones where roof pitch $\leq 10^\circ$.

Metal End Cap Flashing by **Architectural Metalformers**. Fix to purlins with 19mm S/S annular grooved nails @ 200mm c/c.

Double Timber Purlins to Architects Specification.

Line of Timber Framing to Architects Specification.

Timber Rafter/Truss to Architects Specification.



Profile Type:		Lock Seam Roof Apron Flashing (Option A)	
Scale:	1:2	Drawing No.	LS-55
Date:	2016	Revision:	A

NOTE: Cavity battens to be Rosenfeld Kidson CS-H 45 x 45mm H3.1 treated castellated structural cavity battens fixed horizontally @ 450mm max. centres.

Lock Seam Metal Wall Cladding by **Architectural Metalformers** on selected Covertex underlay.

Selected Breather Type Building Wrap turns out over Apron Flashing.

Rosenfeld Kidson CS-H 45 x 65mm H3.1 treated castellated structural cavity batten with 3mm face rebate as required for cladding buildup.

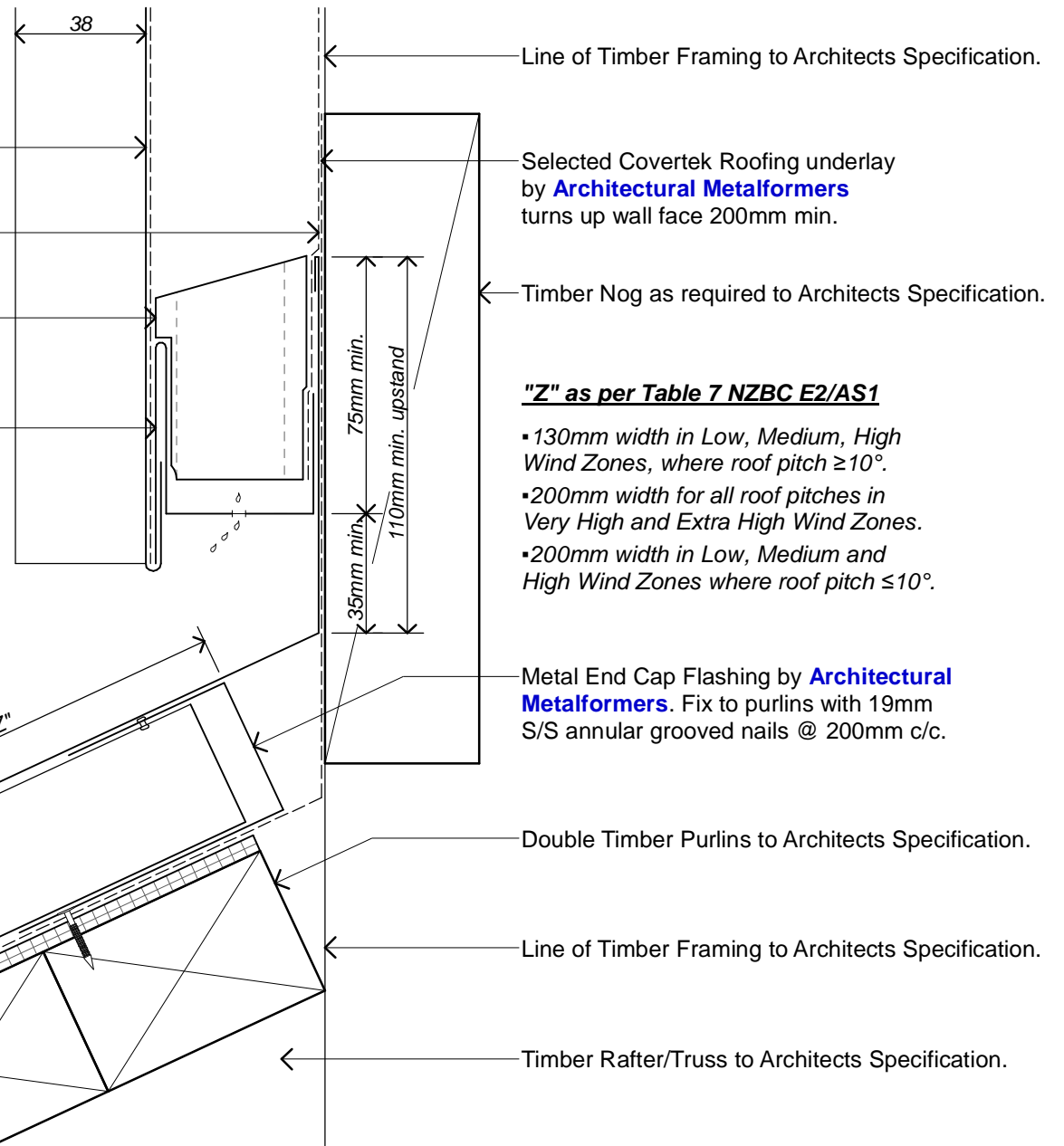
Folded cavity closer/panel starter by **Architectural Metalformers**. Punched cavity closer providing 1000mm² of ventilation per lineal metre.

Metal Apron Flashing by **Architectural Metalformers** with 110mm min upstand up wall behind cladding.

Lock Seam Metal Roof Panels by **Architectural Metalformers**.

5mm min. gap to notched turn-down.

Continuous 5mm Corflute bearing strip to all purlins.



architectural
metalformers



smart tray™ Roofing & Cladding

Profile Type:

Lock Seam Roof
Apron Flashing (Option B)

Scale:

1:2

Drawing No.

LS-56

Revision:

A

Date:

2016