

# Electric Showers

The Perfect Solution for a Remote Shower!



**INSTANTANEOUS HOT WATER SHOWERS.  
IDEAL FOR BACHES, OFFICES & REMOTE BATHROOMS.  
NO HOT WATER CYLINDER REQUIRED.**

**TRITON**

# THE SMARTER CHOICE.

Installing a continuous flow electric shower is the perfect solution for remote bathrooms and situations where there can be unpredictable demands for hot water, making them ideal for baches, offices and sports clubs.

With Triton electric showers, water is heated instantly on demand, so you'll never run out of hot water and you'll only pay for what hot water you use.

There's no need for a hot water cylinder and long runs of pipe which can waste water and result in heat losses. Therefore there is no stored water, saving on precious space and improving the affordability even further.

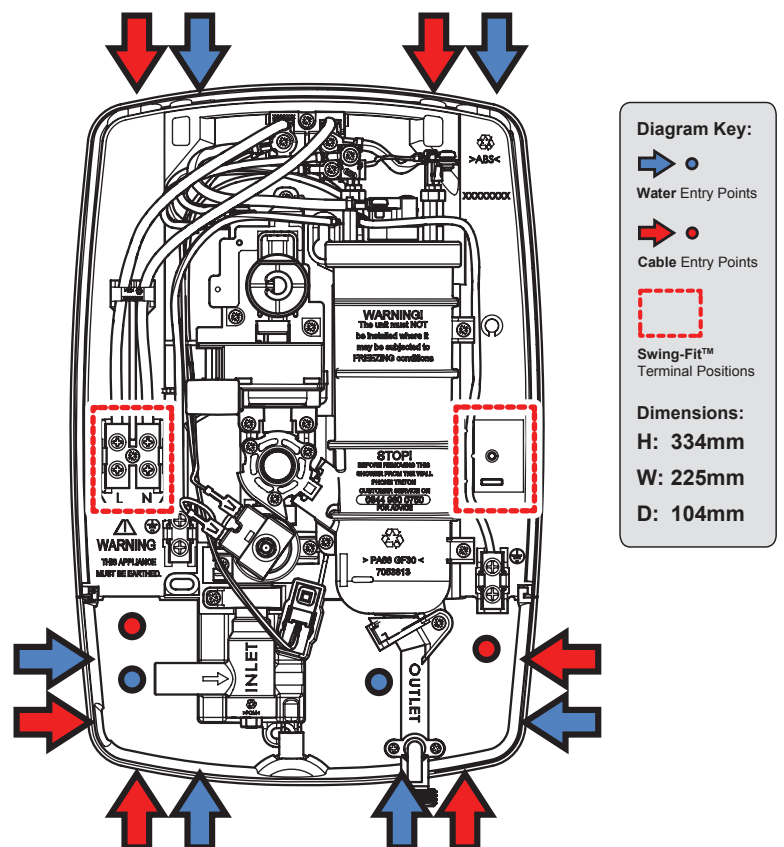


## THE BASICS

The T80Z Electric heating elements located in the main unit operate at a constant rate at your chosen power setting. The rate of the water passing through the heater determines the water temperature. The slower the flow the hotter the water becomes; the faster the flow, the cooler the water.

During winter the mains water supply will be cooler than in summer, so the flow rate will vary between seasons at any one temperature setting.

Therefore at different times of the year you may have to adjust the position of the temperature control/dial to maintain your desired water temperature.







## INSTALLATION GUIDELINES

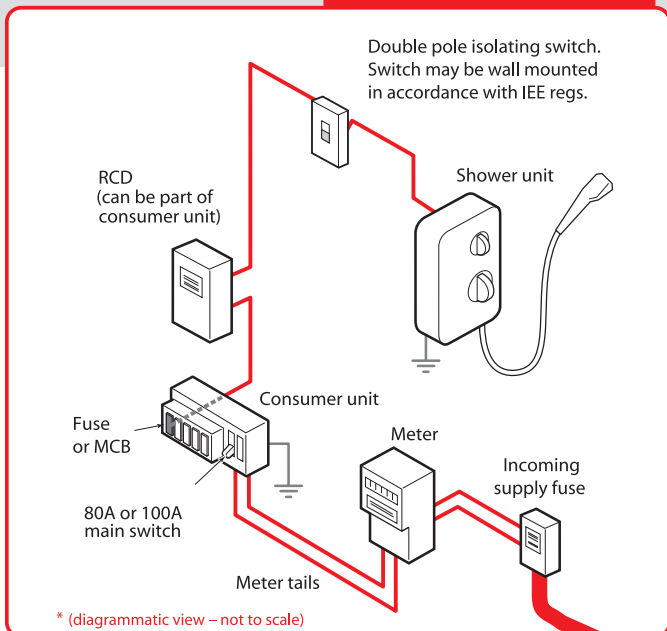
- Only connect unit to a 230v - 240v AC supply.
- The electrical supply must be adequate for the loading of unit and existing circuit
- The shower must be connected to its own independent electrical circuit
- An isolation valve must be fitted in a convenient position in the supply pipe to allow the shower to be serviced.

## IMPORTANT

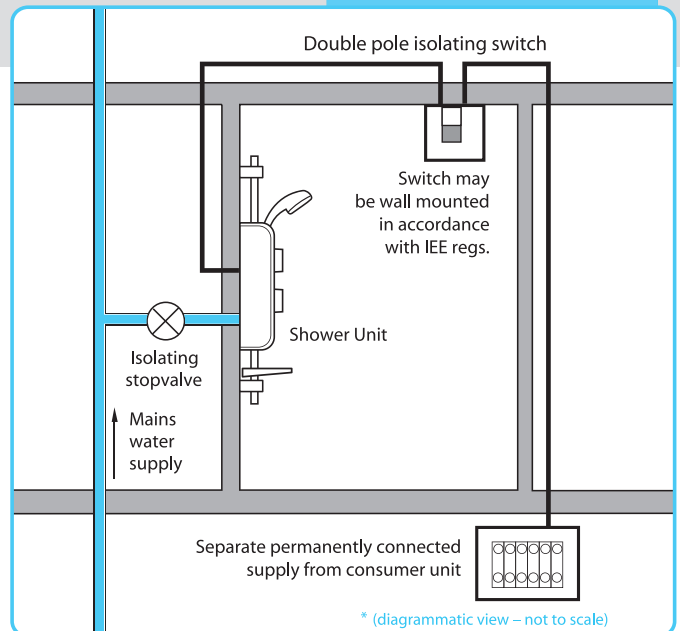
We recommend all TRITON shower installations be carried out by qualified tradespeople, and in accordance with the NZ Building code, trade regulations and the TRITON installation guide.



### ELECTRICAL SUPPLY



### WATER SUPPLY



# THE RANGE

The T80Z Fast-Fit is our most popular selling model, balancing performance with design, and comes with a choice of 2 colours; white and chrome. In addition the T60X offers exceptional value for money while still delivering great design and functionality. Finally, the Safeguard Care model offers unparalleled safety and control features for the disabled or impaired user.

## T80Z Fast-Fit electric shower



## T60X electric shower



## Safeguard Care thermostatic electric shower



### OPERATING FEATURES

- Swing-fit™ – Terminal for left and right cabling
- Swivel-fit™ – A 180° reversible water inlet providing left and right hand side water connectivity
- Ideal size and shape for replacement installations
- Top entry trims removable without tools
- Push button start/stop
- Separate temperature and power controls
- Low pressure indicator
- Power on indicator
- Stylish riser rail kit with adjustable fixing brackets
- Rub Clean showerhead – 5 spray pattern

### OPERATING FEATURES

- Separate temperature & power controls
- Single control for start stop selection
- Safety cut out
- Temperature stabilised
- Rub Clean Showerhead - Single spray pattern

### OPERATING FEATURES

- Endorsed by the RNIB (Royal National Institute of the Blind)
- Unique three stage thermostatic performance
- Adjustable timed shutdown
- Adjustable maximum temperature stop
- Can connect to level access waste pump
- Phased shutdown
- 2m hose
- Rub Clean Showerhead - 5 spray pattern

	T80Z Fast-Fit		T60X	Safeguard Care
Product Code	T80 Fast Fit W	T80 Fast Fit C	T60X	T100X
Finish	White	Chrome	White	White
Temperature Control	Stabilised		Stabilised	Stabilised
Power Ratings at 230v	8.7kW 38amps - IPX4 rated		6.4kW 28amps - IPX4 rated	7.8kW 34amps - IPX4 rated
Inlet Connection	15mm compression		15mm compression	15mm compression
Water Entry Points	Top, bottom, side bottom, back (left side of unit) Top, bottom, side bottom, back (right side of unit)		Top, bottom, back	Top, bottom, back (right hand side of unit)
Cable Entry Points	Top, bottom, back (left or right side of unit) Bottom, back (right hand side of unit)		Top, bottom, back	Top, bottom, back (right hand side of unit)
Outlet Connection	1/2" BSP		1/2" BSP	1/2" BSP
Plumbing System	Cold water only		Cold water only	Mains cold water only
Max Inlet Temp	28°C		28°C	28°C
Min Inlet Temp	2°C		2°C	2°C
Minimum Running Pressure/ Flow for full performance*	1.0 Bar @ 8 l/min		1.0 Bar @ 8 l/min	0.5 Bar @ 8 l/min
Maximum Static Pressure	10 Bar		10 Bar	10 Bar
Surface Mounted Only	✓		✓	✓
Approvals, Complies with	AS/NZS60335.2.35, EMC BEAB, CE, BSI Kitemark		AS/NZS60335.2.35, EMC BEAB, CE, BSI Kitemark	BEAB, BEAB Care, RNIB, CE, BSI Kitemark
Warranty	2 years domestic		2 years domestic	2 years domestic



Parex Industries Ltd. | 5 Tolich Place, Henderson 0610.  
p. (Auckland): 09 836 6566 | p. (Nationwide): 0800 200 510  
e. info.parex@emerson.com | www.parex.co.nz

