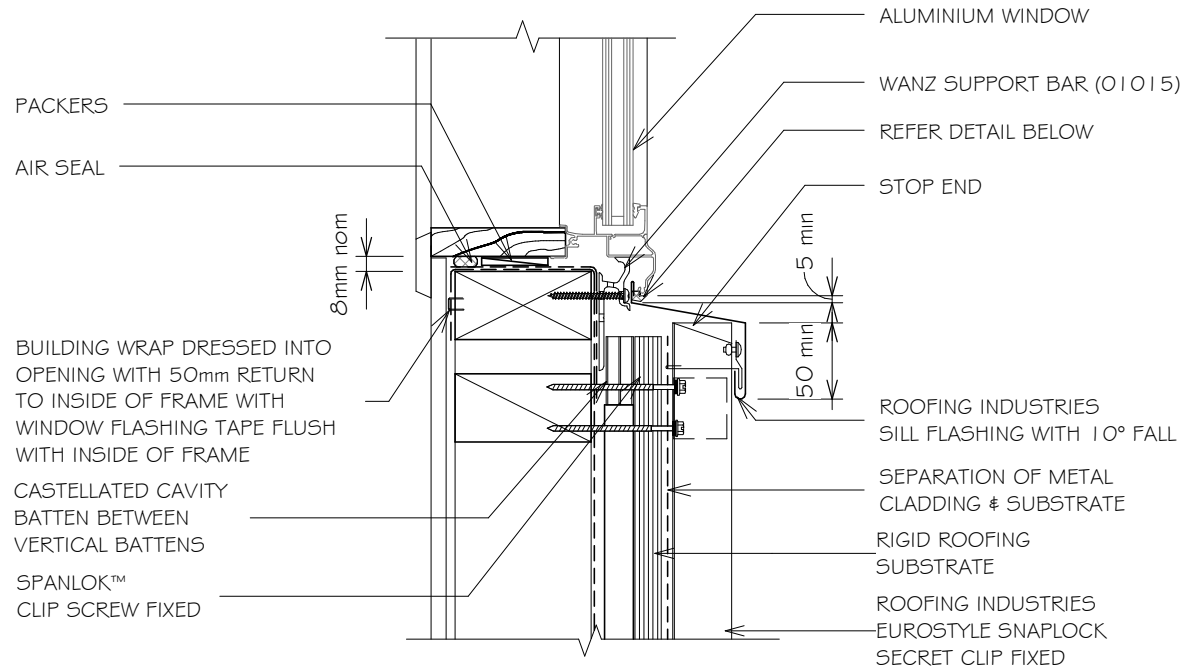


EUROSTYLE SNAPLOCK WALL CLADDING WINDOW / DOOR SILL FLASHING FOR VERTICAL CLADDING ON CAVITY

Detail Number: RI-ESLW012C

Date drawn: 02/02/2018

Scale: 1 : 5@ A4



BUILDING WRAP DRESSED INTO
OPENING WITH 50mm RETURN
TO INSIDE OF FRAME WITH
WINDOW FLASHING TAPE FLUSH
WITH INSIDE OF FRAME

CASTELLATED CAVITY
BATTEN BETWEEN
VERTICAL BATTENS

SPANLOK™
CLIP SCREW FIXED

ALUMINIUM WINDOW

WANZ SUPPORT BAR (Ø1015)

REFER DETAIL BELOW

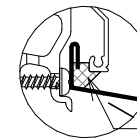
STOP END

ROOFING INDUSTRIES
SILL FLASHING WITH 10° FALL

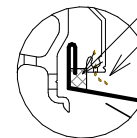
SEPARATION OF METAL
CLADDING & SUBSTRATE

RIGID ROOFING
SUBSTRATE

ROOFING INDUSTRIES
EUROSTYLE SNAPLOCK
SECRET CLIP FIXED



Continuous seal



Continuous seal
Keep drainage
passage clear

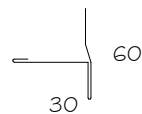
NOTE:

Sill sealing method for flange
end type drainage systems

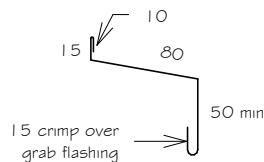
GENERAL NOTES:

1. REFER TO E2/AS1 FOR GENERAL WINDOW OPENING FOR WRAPPING OF FRAMED OPENING PRIOR TO WINDOW INSTALLATION.
2. A MIN. OF 8mm EFFECTIVE COVER AT SILLS SHALL BE PERMITTED WHERE NECESSARY TO ALLOW FOR TOLERANCES.
3. WINDOW PROFILE TO BE SELECTED TO ACHIEVE COVER SHOWN IN DETAILS.
4. ARCHITRAVE'S ARE SHOWN FOR CONSISTENCY ONLY, DETAIL MAY BE USED WITH REBATED LINER.
5. WHERE SUPPORT BRACKETS ARE REQUIRED BY THE WINDOW MANUFACTURER TO CARRY THE FRAME AND GLAZING LOADS THEY MUST BE SUPPLIED AS AN INTEGRAL PART OF THE WINDOW MANUFACTURER'S RECOMMENDATIONS.
6. LIAISE WITH WINDOW MANUFACTURER PRIOR TO INSTALLATION.
7. ALLOW FOR SEPARATION FROM ANY CORROSIVE TIMBER TREATMENT.
8. ALL DIMENSIONS SHOWN ON DRAWINGS ARE NOMINAL +/- 5mm
9. CASTELLATED TIMBER BATTEN OR APPROVED DRAINED BATTEN MAY BE USED WITH THIS SYSTEM.

REFERENCE FLASHINGS:
NZ METAL ROOF AND WALL CLADDING
CODE OF PRACTICE. E2/AS1 OR
REFER MANUF DETAILING.
DIMENSIONS ARE INDICATIVE ONLY



Hem to be clear of pan 3-5mm



15 crimp over
grab flashing

Sill flashings stop ended to
receive jamb flashings
(Dimensions are indicative only
& show minimum lap covers)

NOTES:

- These details are generally in compliance the NZ Metal Roof & Wall Cladding Code of Practice and in some cases specific details by 'Roofing Industries'. Eurostyle falls outside the criteria of E2/AS1 and this document is therefore not applicable.
- The building designer is ultimately responsible to ensure that details used meet the requirements of the NZ Building Code for the specific project.
- Details of the supporting structure including cavity battens are indicative only and are the responsibility of the building designer. For steel framed buildings thermal break cavity battens may be required.
- Underlay selection and building wrap types are the responsibility of the designer.
- These details are for Roofing Industries profile/s as nominated and may not be applicable to other profiles.
- This drawing is the copyright of 'Roofing Industries' and can only be copied or reproduced with their permission.
- These details to be read with Roofing Industries profile technical summary regarding wind loads and fixings.
- Further information can be obtained from the NZ Metal Roof & Wall Cladding Code of Practice: www.metalroofing.org.nz or E2/AS1.

Copyright detail © 2017

