

EUROSTYLE INTERLOCKING PANEL

RESIDENTIAL INTERLOCKING CLADDING AND SOFFIT

SHEET LIST

Detail Number: RI-ESL-000A

Date drawn: 02/02/2018

Residential Interlocking Cladding and Soffit Sheet List		
Sheet Number	Type	Sheet Name
EUROSTYLE INTERLOCKING PANEL		
RI-ESL-000A	EUROSTYLE INTERLOCKING PANEL	RESIDENTIAL INTERLOCKING CLADDING AND SOFFIT SHEET LIST
RI-ESL-000B	EUROSTYLE INTERLOCKING PANEL	PROFILES & ACCESSORIES
RI-ESL-000C	EUROSTYLE INTERLOCKING PANEL	PROFILE SUMMARY - INTERLOCKING CLADDING AND SOFFIT
RI-ESLW001A	EUROSTYLE INTERLOCKING PANEL CLADDING	CAPPING DETAIL FOR VERTICAL CLADDING ON CAVITY
RI-ESLW003A	EUROSTYLE INTERLOCKING PANEL CLADDING	WALL CLADDING EXTERNAL VERTICAL CORNER ON CAVITY
RI-ESLW004A	EUROSTYLE INTERLOCKING PANEL CLADDING	WALL CLADDING INTERNAL VERTICAL CORNER ON CAVITY
RI-ESLW005A	EUROSTYLE INTERLOCKING PANEL CLADDING	WALL CLADDING BASE OF VERTICAL CLADDING ON CAVITY
RI-ESLW010A	EUROSTYLE INTERLOCKING PANEL CLADDING	TRANSVERSE JUNCTION FOR VERTICAL CLADDING ON CAVITY
RI-ESLW012A	EUROSTYLE INTERLOCKING PANEL CLADDING	WINDOW / DOOR HEAD FLASHING FOR VERTICAL CLADDING ON CAVITY
RI-ESLW012A-1	EUROSTYLE INTERLOCKING PANEL CLADDING	WINDOW / DOOR HEAD FLASHING FOR VERTICAL CLADDING ON CAVITY
RI-ESLW012B	EUROSTYLE INTERLOCKING PANEL CLADDING	WINDOW / DOOR JAMB FLASHING FOR VERTICAL CLADDING ON CAVITY
RI-ESLW012B-1	EUROSTYLE INTERLOCKING PANEL CLADDING	WINDOW / DOOR JAMB FLASHING FOR VERTICAL CLADDING ON CAVITY
RI-ESLW012C	EUROSTYLE INTERLOCKING PANEL CLADDING	WINDOW / DOOR SILL FLASHING FOR VERTICAL CLADDING ON CAVITY
RI-ESLW012C-1	EUROSTYLE INTERLOCKING PANEL CLADDING	WINDOW / DOOR SILL FLASHING FOR VERTICAL CLADDING ON CAVITY
RI-ESLW021A	EUROSTYLE INTERLOCKING PANEL CLADDING	CAPPING DETAIL FOR HORIZONTAL CLADDING ON CAVITY
RI-ESLW023A	EUROSTYLE INTERLOCKING PANEL CLADDING	EXTERNAL CORNER FLASHING FOR HORIZONTAL CLADDING ON CAVITY
RI-ESLW024A	EUROSTYLE INTERLOCKING PANEL CLADDING	INTERNAL CORNER FLASHING FOR HORIZONTAL CLADDING ON CAVITY TYPE 1
RI-ESLW024B	EUROSTYLE INTERLOCKING PANEL CLADDING	INTERNAL CORNER FLASHING FOR HORIZONTAL CLADDING ON CAVITY TYPE 2
RI-ESLW024C	EUROSTYLE INTERLOCKING PANEL CLADDING	INTERNAL CORNER FLASHING FOR HORIZONTAL CLADDING ON CAVITY TYPE 3
RI-ESLW025A	EUROSTYLE INTERLOCKING PANEL CLADDING	BASE DETAIL FOR HORIZONTAL CLADDING ON CAVITY
RI-ESLW030A	EUROSTYLE INTERLOCKING PANEL CLADDING	TRANSVERSE JOINT DETAIL FOR HORIZONTAL CLADDING ON CAVITY
RI-ESLW050A	EUROSTYLE INTERLOCKING PANEL SOFFIT	TYPICAL SOFFIT DETAIL
RI-ESLW051A	EUROSTYLE INTERLOCKING PANEL SOFFIT	TYPICAL SOFFIT DETAIL (PARALLEL)

Copyright detail © 2017



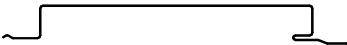
EUROSTYLE INTERLOCKING PANEL PROFILES & ACCESSORIES

Detail Number: RI-ESL-000B
Date drawn: 02/02/2018
Scale: 1 : 5@ A4

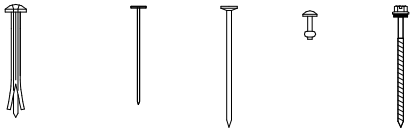
ROOFING INDUSTRIES EUROSTYLE INTERLOCKING
CLADDING AND SOFFIT SECRET CLIP FIXED



ROOFING INDUSTRIES EUROSTYLE INTERLOCKING
CLADDING AND SOFFIT SECRET CLIP FIXED



Fixings



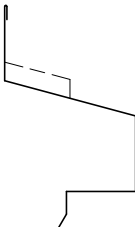
METAL ANGLE



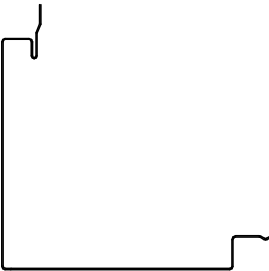
ROOFING INDUSTRIES
UNDERFLASHING



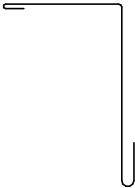
HEAD FLASHING



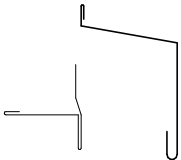
ROOFING INDUSTRIES
SNAPLOK EXTERNAL
CORNER



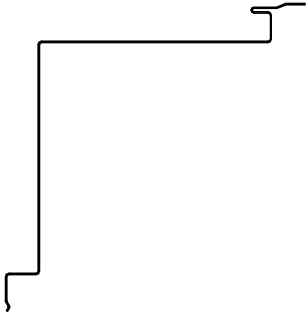
ROOFING INDUSTRIES
ANGLE FLASHING



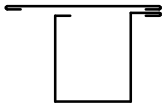
SILL FLASHING



ROOFING INDUSTRIES
INTERLOCKING CLADDING
AND SOFFIT INTERNAL
CORNER



JAMB FLASHING



Copyright detail © 2017



EUROSTYLE INTERLOCKING PANEL

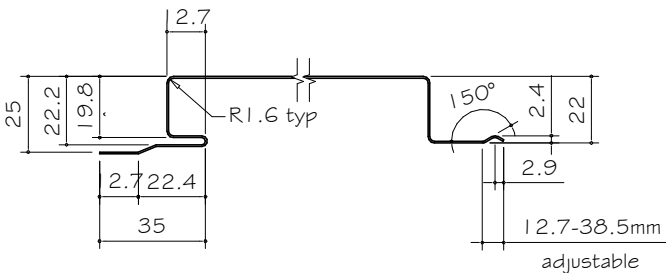
PROFILE SUMMARY - INTERLOCKING CLADDING AND SOFFIT

Detail Number: RI-ESL-000C

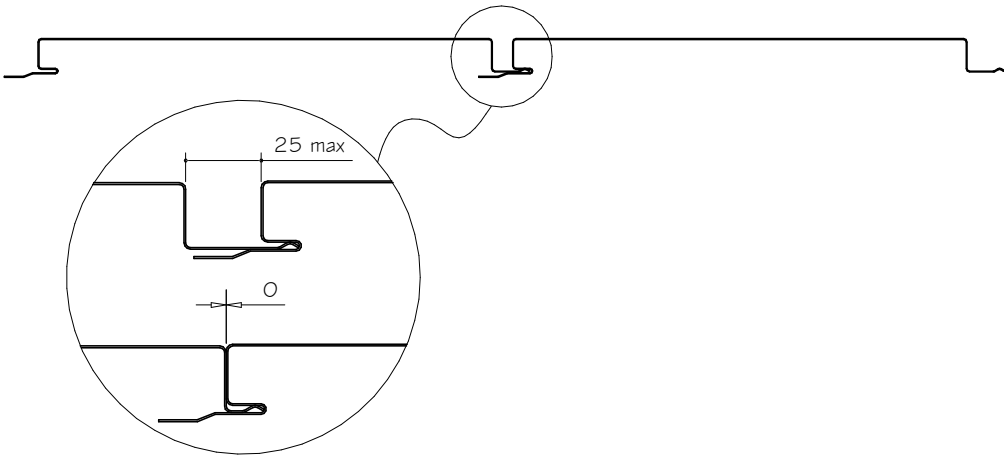
Date drawn: 02/02/2018

Scale: 1 : 5@ A4

(All dimensions are nominal and in mm.)



VARIABLE PAN WIDTH FROM 185mm (INQUIRE FOR AVAILABILITY)
STANDARD WIDTH APPROX 250mm
Scale 1:2.5



ANGLE STANDING SEAM™

COIL SIZE	525mm	390mm	380mm	340mm
PAN WIDTH	400mm*	265mm*	255mm	215mm

Add 10mm to above pan size for effective cover (depending on recess width).
*May require a 24mm packer.

- NOTES:**
- PANEL WIDTHS ARE GENERALLY DETERMINED BY COIL SIZE AVAILABILITY.
 - PANEL WIDTHS IN EXCESS OF STANDARD WIDTHS HAVE LOWER WIND LOADING LIMITATIONS.
 - ALL DIMENSIONS SHOWN ON DRAWINGS ARE NOMINAL +/- 5mm-
 - PAN WIDTH GREATER THAN 280mm WILL REQUIRE ADDITIONAL SUPPORT TO REDUCE DEFLECTION
 - HIGH WIND ZONE AND ABOVE WILL REQUIRE A FIXING IN JOINT

NON PLY SUBSTRATE

STANDARD MATERIAL TYPES	GAUGE
COLORCOTE / COLORSTEEL	0.55mm & 0.75mm
COPPER	0.70mm
ZINC	1.00mm
ALUMINIUM	0.90mm

Copyright detail © 2017

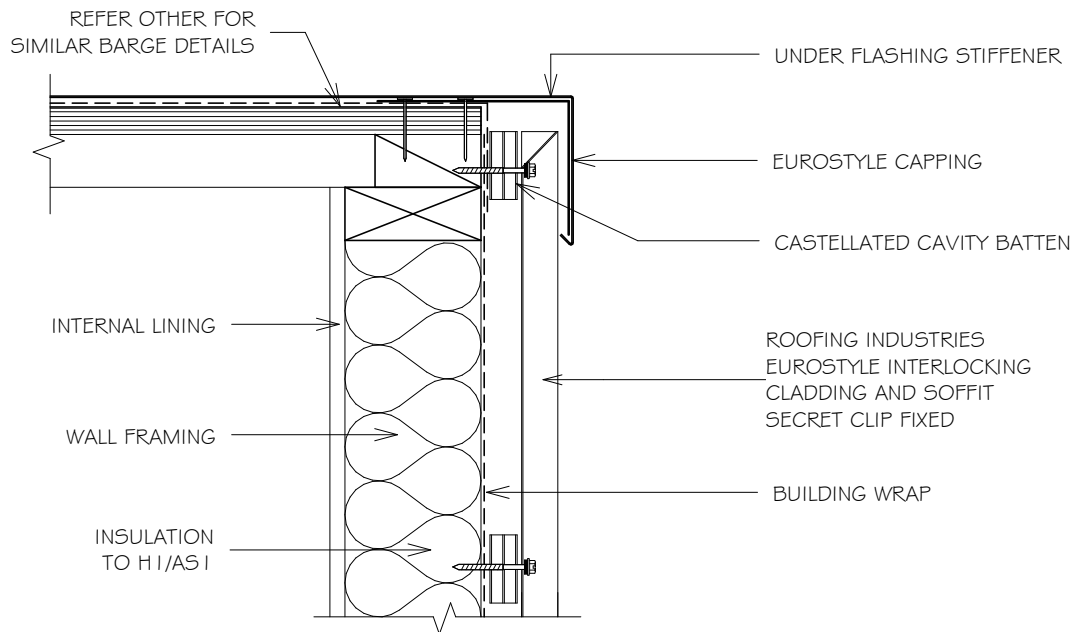


EUROSTYLE INTERLOCKING PANEL CLADDING CAPPING DETAIL FOR VERTICAL CLADDING ON CAVITY

Detail Number: RI-ESLW001A

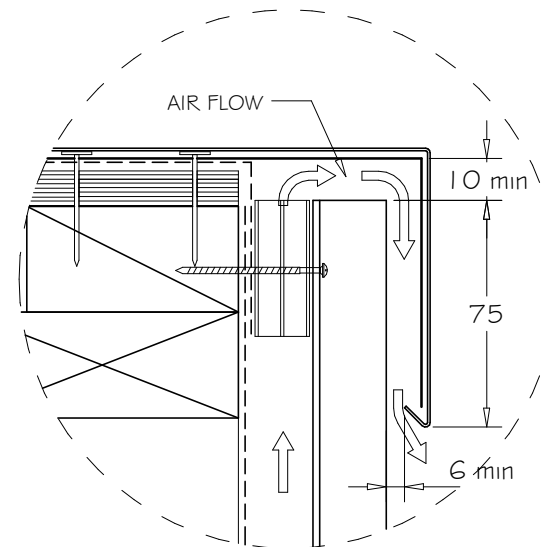
Date drawn: 02/02/2018

Scale: 1 : 5@ A4



NOTES:

1. TIMBER CONTAINING CORROSIVE TREATMENTS MUST BE SEPARATED FROM METAL CLADDING BY DPC, BUILDING WRAP, PVC OR PAINTING.
2. FOR FIXING METHODS REFER TO SPECIFICATIONS.
3. THIS DETAIL TO BE CONFIRMED BY ROOFING INDUSTRIES TECHNICAL DEPT PRIOR TO USE.
4. CLOSE OFF ANY ROOF VENTILATION TO WALL CAVITY.
5. HIGH TO EXTRA HIGH WIND ZONE DOUBLE FIX UNDERFLASHINGS.
6. ALL DIMENSIONS SHOWN ON DRAWINGS ARE NOMINAL $\pm 5\text{mm}$
7. CASTELLATED TIMBER BATTEN OR APPROVED DRAINED BATTEN MAY BE USED WITH THIS SYSTEM.



NOTES:

- These details are generally in compliance the NZ Metal Roof & Wall Cladding Code of Practice and in some cases specific details by 'Roofing Industries'. Eurostyle falls outside the criteria of E2/AS1 and this document is therefore not applicable.
- The building designer is ultimately responsible to ensure that details used meet the requirements of the NZ Building Code for the specific project.
- Details of the supporting structure including cavity battens are indicative only and are the responsibility of the building designer. For steel framed buildings thermal break cavity battens may be required.
- Underlay selection and building wrap types are the responsibility of the designer.
- These details are for Roofing Industries profile/s as nominated and may not be applicable to other profiles.
- This drawing is the copyright of 'Roofing Industries' and can only be copied or reproduced with their permission.
- These details to be read with Roofing Industries profile technical summary regarding wind loads and fixings.
- Further information can be obtained from the NZ Metal Roof & Wall Cladding Code of Practice: www.metalroofing.org.nz or E2/AS1.

Copyright detail © 2017

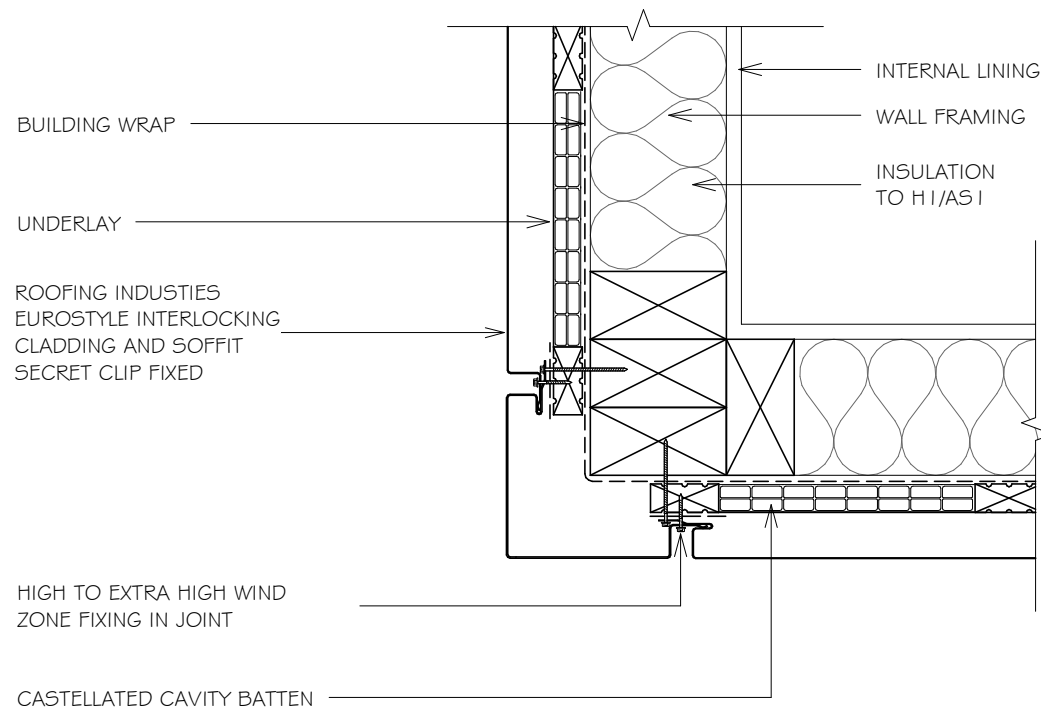


EUROSTYLE INTERLOCKING PANEL CLADDING WALL CLADDING EXTERNAL VERTICAL CORNER ON CAVITY

Detail Number: RI-ESLW003A

Date drawn: 02/02/2018

Scale: 1 : 5@ A4



NOTES:

1. TIMBER CONTAINING CORROSIVE TREATMENTS MUST BE SEPARATED FROM METAL CLADDING BY DPC, BUILDING WRAP, PVC OR PAINTING.
2. FOR FIXING METHODS REFER TO SPECIFICATIONS.
3. THIS DETAIL TO BE CONFIRMED BY ROOFING INDUSTRIES TECHNICAL DEPT PRIOR TO USE.
4. ALL DIMENSIONS SHOWN ON DRAWINGS ARE NOMINAL +/- 5mm
5. CASTELLATED TIBMER BATTEN OR APPROVED DRAINED BATTEN MAY BE USED WITH THIS SYSTEM.

NOTES:

- These details are generally in compliance the NZ Metal Roof & Wall Cladding Code of Practice and in some cases specific details by 'Roofing Industries'. Eurostyle falls outside the criteria of E2/AS1 and this document is therefore not applicable.
- The building designer is ultimately responsible to ensure that details used meet the requirements of the NZ Building Code for the specific project.
- Details of the supporting structure including cavity battens are indicative only and are the responsibility of the building designer. For steel framed buildings thermal break cavity battens may be required.
- Underlay selection and building wrap types are the responsibility of the designer.
- These details are for Roofing Industries profile/s as nominated and may not be applicable to other profiles.
- This drawing is the copyright of 'Roofing Industries' and can only be copied or reproduced with their permission.
- These details to be read with Roofing Industries profile technical summary regarding wind loads and fixings.
- Further information can be obtained from the NZ Metal Roof & Wall Cladding Code of Practice: www.metalroofing.org.nz or E2/AS1.

Copyright detail © 2017



EUROSTYLE INTERLOCKING PANEL CLADDING

WALL CLADDING INTERNAL VERTICAL CORNER ON CAVITY

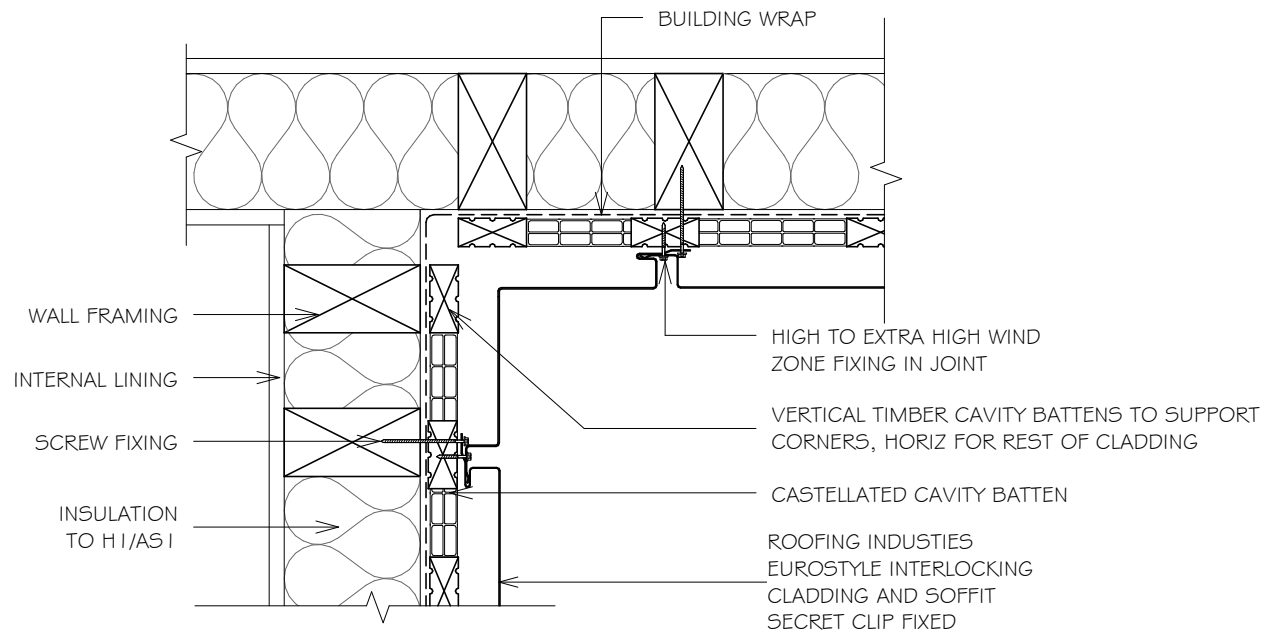
Detail Number: RI-ESLW004A

Date drawn: 02/02/2018

Scale: 1 : 5@ A4

NOTES:

1. TIMBER CONTAINING CORROSIVE TREATMENTS MUST BE SEPARATED FROM METAL CLADDING BY DPC, BUILDING WRAP, PVC OR PAINTING.
2. FOR FIXING METHODS REFER TO SPECIFICATIONS.
3. THIS DETAIL TO BE CONFIRMED BY ROOFING INDUSTRIES TECHNICAL DEPT PRIOR TO USE.
4. ALL DIMENSIONS SHOWN ON DRAWINGS ARE NOMINAL +/- 5mm
5. CASTELLATED TIMBER BATTEN OR APPROVED DRAINED BATTEN MAY BE USED WITH THIS SYSTEM.



NOTES:

- These details are generally in compliance the NZ Metal Roof & Wall Cladding Code of Practice and in some cases specific details by 'Roofing Industries'. Eurostyle falls outside the criteria of E2/AS1 and this document is therefore not applicable.
- The building designer is ultimately responsible to ensure that details used meet the requirements of the NZ Building Code for the specific project.
- Details of the supporting structure including cavity battens are indicative only and are the responsibility of the building designer. For steel framed buildings thermal break cavity battens may be required.
- Underlay selection and building wrap types are the responsibility of the designer.
- These details are for Roofing Industries profile/s as nominated and may not be applicable to other profiles.
- This drawing is the copyright of 'Roofing Industries' and can only be copied or reproduced with their permission.
- These details to be read with Roofing Industries profile technical summary regarding wind loads and fixings.
- Further information can be obtained from the NZ Metal Roof & Wall Cladding Code of Practice: www.metalroofing.org.nz or E2/AS1.

Copyright detail © 2017



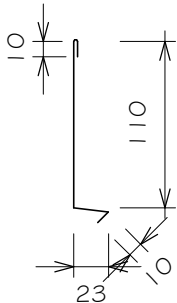
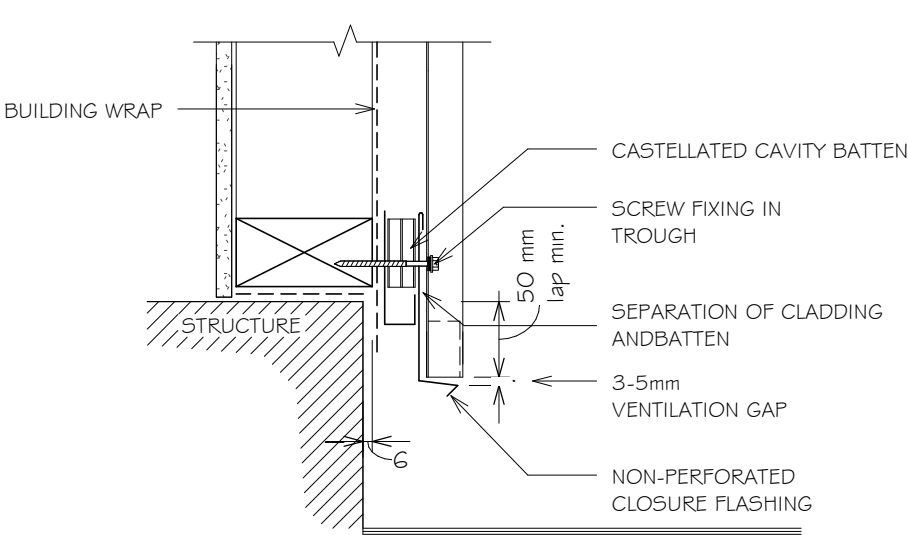
EUROSTYLE INTERLOCKING PANEL CLADDING

WALL CLADDING BASE OF VERTICAL CLADDING ON CAVITY

Detail Number: RI-ESLW005A

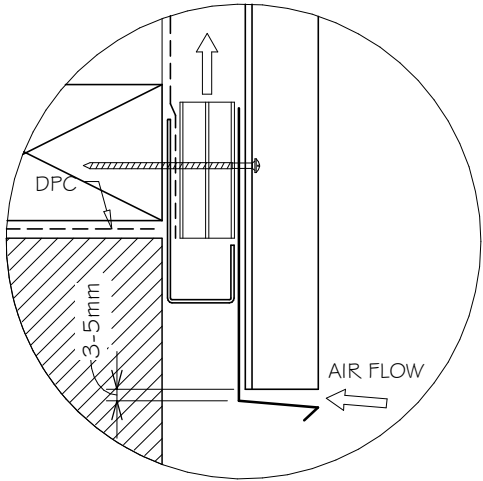
Date drawn: 02/02/2018

Scale: 1 : 5@ A4



- NOTES:
1. TIMBER CONTAINING CORROSIVE TREATMENTS MUST BE SEPARATED FROM METAL CLADDING BY DPC, BUILDING WRAP, PVC OR PAINTING.
 2. FOR FIXING METHODS REFER TO SPECIFICATIONS.
 3. THIS DETAIL TO BE CONFIRMED BY ROOFING INDUSTRIES TECHNICAL DEPT PRIOR TO USE.
 4. HIGH TO EXTRA HIGH WIND ZONE DOUBLE FIX UNDERFLASHINGS.
 5. ALL DIMENSIONS SHOWN ON DRAWINGS ARE NOMINAL +/- 5mm
 6. CASTELLATED TIBMER BATTEN OR APPROVED DRAINED BATTEN MAY BE USED WITH THIS SYSTEM.

SET DOWN	MINIMUM
	Z
PAVED SURFACE	100mm
UNPAVED SURFACE	175mm



- NOTES:
- These details are generally in compliance the NZ Metal Roof & Wall Cladding Code of Practice and in some cases specific details by 'Roofing Industries'. Eurostyle falls outsider the criteria of E2/AS 1 and this document is therefore not applicable.
 - The building designer is ultimatley responsible to ensure that details used meet the requirements of the NZ Building Code for the specific project.
 - Details of the supporting structure including cavity battens are indicative only and are the responsibility of the building designer. For steel framed buildings thermal break cavity battens may be required.
 - Underlay selection and building wrap types are the responsibility of the designer.
 - These details are for Roofing Industries profile/s as nominated and may not be applicable to other profiles.
 - This drawing is the copyright of 'Roofing Industries' and can only be copied or reproduced with their permission.
 - These details to be read with Roofing Industries profile technical summary regarding wind loads and fixings.
 - Further information can be obtained from the NZ Metal Roof & Wall Cladding Code of Practice: www.metalroofing.org.nz or E2/AS 1.

Copyright detail © 2017

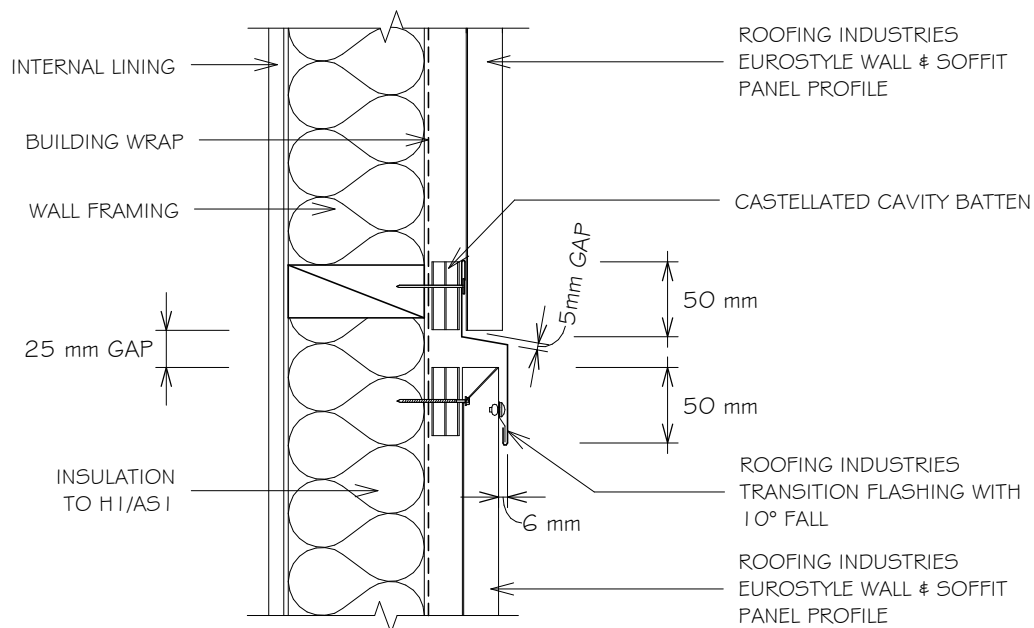


EUROSTYLE INTERLOCKING PANEL CLADDING TRANSVERSE JUNCTION FOR VERTICAL CLADDING ON CAVITY

Detail Number: RI-ESLWO10A

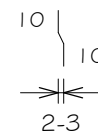
Date drawn: 02/02/2018

Scale: 1 : 5@ A4



NOTES:

1. TIMBER CONTAINING CORROSIVE TREATMENTS MUST BE SEPARATED FROM METAL CLADDING BY DPC, BUILDING WRAP, PVC OR PAINTING.
2. FOR FIXING METHODS REFER TO SPECIFICATIONS.
3. THIS DETAIL TO BE CONFIRMED BY ROOFING INDUSTRIES TECHNICAL DEPT PRIOR TO USE.
4. HIGH TO EXTRA HIGH WIND ZONE DOUBLE FIX UNDERFLASHINGS.
5. ALL DIMENSIONS SHOWN ON DRAWINGS ARE NOMINAL +/- 5mm
6. CASTELLATED TIBMER BATTEN OR APPROVED DRAINED BATTEN MAY BE USED WITH THIS SYSTEM.



NOTES:

- These details are generally in compliance the NZ Metal Roof & Wall Cladding Code of Practice and in some cases specific details by 'Roofing Industries'. Eurostyle falls outside the criteria of E2/AS1 and this document is therefore not applicable.
- The building designer is ultimately responsible to ensure that details used meet the requirements of the NZ Building Code for the specific project.
- Details of the supporting structure including cavity battens are indicative only and are the responsibility of the building designer. For steel framed buildings thermal break cavity battens may be required.
- Underlay selection and building wrap types are the responsibility of the designer.
- These details are for Roofing Industries profile/s as nominated and may not be applicable to other profiles.
- This drawing is the copyright of 'Roofing Industries' and can only be copied or reproduced with their permission.
- These details to be read with Roofing Industries profile technical summary regarding wind loads and fixings.
- Further information can be obtained from the NZ Metal Roof & Wall Cladding Code of Practice: www.metalroofing.org.nz or E2/AS1.

Copyright detail © 2017

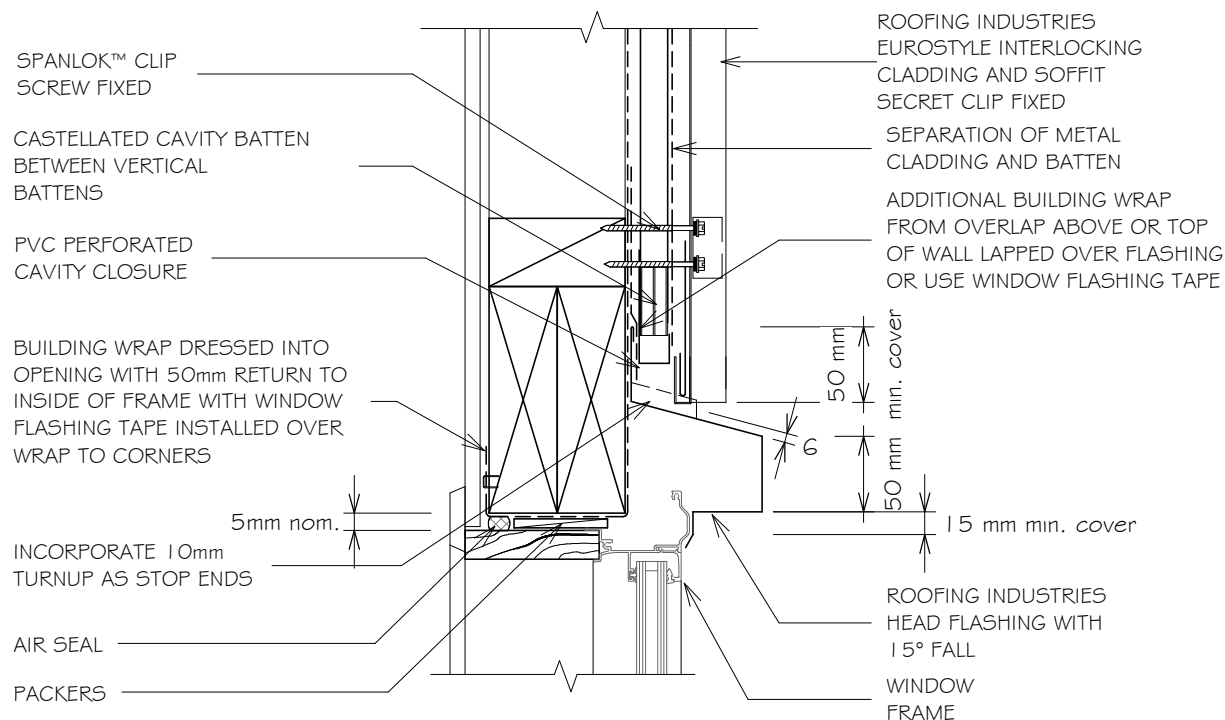


EUROSTYLE INTERLOCKING PANEL CLADDING WINDOW / DOOR HEAD FLASHING FOR VERTICAL CLADDING ON CAVITY

Detail Number: RI-ESLWO12A

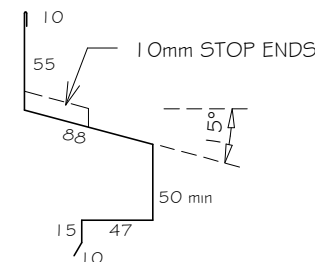
Date drawn: 02/02/2018

Scale: 1 : 5@ A4



GENERAL NOTES:

1. REFER TO E2/AS1 FOR GENERAL WINDOW OPENING FOR WRAPPING OF FRAMED OPENING PRIOR TO WINDOW INSTALLATION.
2. A MIN. OF 8mm EFFECTIVE COVER AT SILLS SHALL BE PERMITTED WHERE NECESSARY TO ALLOW FOR TOLERANCES.
3. WINDOW PROFILE TO BE SELECTED TO ACHIEVE COVER SHOWN IN DETAILS.
4. ARCHITRAVES ARE SHOWN FOR CONSISTENCY ONLY, DETAIL MAY BE USED WITH REBATED LINER.
5. LIAISE WITH WINDOW MANUFACTURER PRIOR TO INSTALLATION.
6. ALLOW FOR SEPARATION FROM ANY CORROSIVE TIMBER TREATMENTS.
7. SEAL HEAD FLASHING TO WINDOW IN VERY HIGH & EXTRA HIGH WIND ZONES.
8. ALL DIMENSIONS SHOWN ON DRAWINGS ARE NOMINAL +/- 5mm
9. CASTELLATED TIMBER BATTEN OR APPROVED DRAINED BATTEN MAY BE USED WITH THIS SYSTEM.



(Dimensions are indicative only)
Turn down end of head flashing
to jamb flashing

REFERENCE FLASHINGS:
NZ METAL ROOF AND WALL
CLADDING CODE OF PRACTICE.
E2/AS1 OR REFER MANUF DETAILING.
DIMENSIONS ARE INDICATIVE ONLY

NOTES:

- These details are generally in compliance the NZ Metal Roof & Wall Cladding Code of Practice and in some cases specific details by 'Roofing Industries'. Eurostyle falls outside the criteria of E2/AS1 and this document is therefore not applicable.
- The building designer is ultimately responsible to ensure that details used meet the requirements of the NZ Building Code for the specific project.
- Details of the supporting structure including cavity battens are indicative only and are the responsibility of the building designer. For steel framed buildings thermal break cavity battens may be required.
- Underlay selection and building wrap types are the responsibility of the designer.
- These details are for Roofing Industries profile/s as nominated and may not be applicable to other profiles.
- This drawing is the copyright of 'Roofing Industries' and can only be copied or reproduced with their permission.
- These details to be read with Roofing Industries profile technical summary regarding wind loads and fixings.
- Further information can be obtained from the NZ Metal Roof & Wall Cladding Code of Practice: www.metalroofing.org.nz or E2/AS1.

Copyright detail © 2017

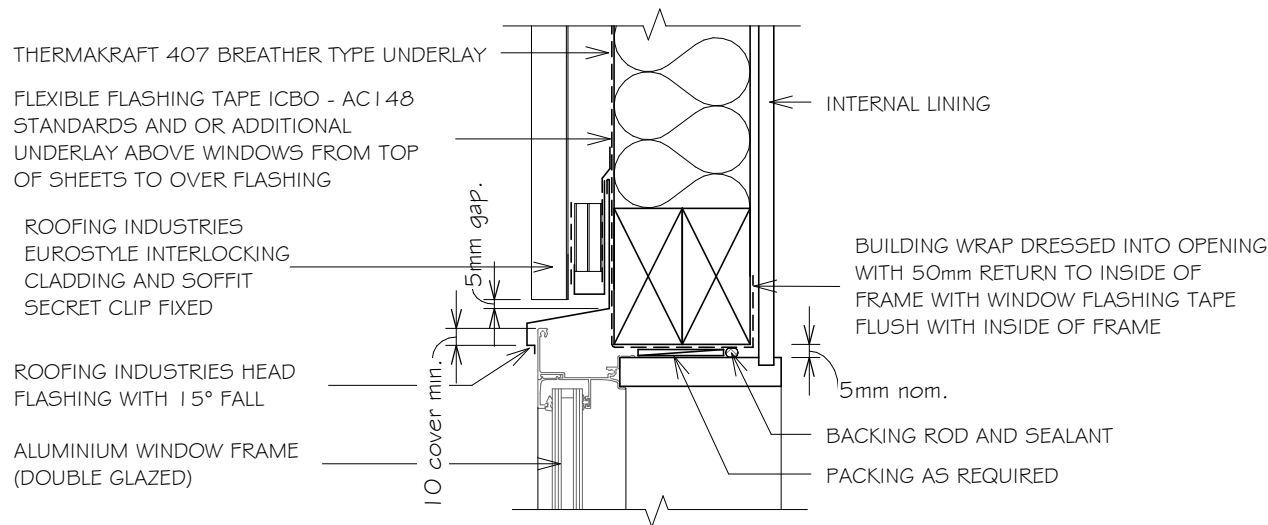


EUROSTYLE INTERLOCKING PANEL CLADDING WINDOW / DOOR HEAD FLASHING FOR VERTICAL CLADDING ON CAVITY

Detail Number: RI-ESLW012A-1

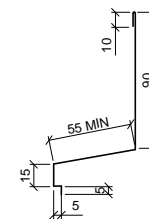
Date drawn: 02/02/2018

Scale: 1 : 5@ A4



GENERAL NOTES:

1. REFER TO E2/AS1 FOR GENERAL WINDOW OPENING FOR WRAPPING OF FRAMED OPENING PRIOR TO WINDOW INSTALLATION.
2. A MIN. OF 8mm EFFECTIVE COVER AT SILLS SHALL BE PERMITTED WHERE NECESSARY TO ALLOW FOR TOLERANCES.
3. WINDOW PROFILE TO BE SELECTED TO ACHIEVE COVER SHOWN IN DETAILS.
4. ARCHITRAVE'S ARE SHOWN FOR CONSISTENCY ONLY, DETAIL MAY BE USED WITH REBATED LINER.
5. LIAISE WITH WINDOW MANUFACTURER PRIOR TO INSTALLATION.
6. ALLOW FOR SEPARATION FROM ANY CORROSIVE TIMBER TREATMENTS.
7. SEAL HEAD FLASHING TO WINDOW IN VERY HIGH & EXTRA HIGH WIND ZONES.
8. ALL DIMENSIONS SHOWN ON DRAWINGS ARE NOMINAL +/- 5mm
9. CASTELLATED TIMBER BATTEN OR APPROVED DRAINED BATTEN MAY BE USED WITH THIS SYSTEM.



NOTES:

- These details are generally in compliance the NZ Metal Roof & Wall Cladding Code of Practice and in some cases specific details by 'Roofing Industries'. Eurostyle falls outside the criteria of E2/AS1 and this document is therefore not applicable.
- The building designer is ultimately responsible to ensure that details used meet the requirements of the NZ Building Code for the specific project.
- Details of the supporting structure including cavity battens are indicative only and are the responsibility of the building designer. For steel framed buildings thermal break cavity battens may be required.
- Underlay selection and building wrap types are the responsibility of the designer.
- These details are for Roofing Industries profile/s as nominated and may not be applicable to other profiles.
- This drawing is the copyright of 'Roofing Industries' and can only be copied or reproduced with their permission.
- These details to be read with Roofing Industries profile technical summary regarding wind loads and fixings.
- Further information can be obtained from the NZ Metal Roof & Wall Cladding Code of Practice: www.metalroofing.org.nz or E2/AS1.

Copyright detail © 2017



EUROSTYLE INTERLOCKING PANEL CLADDING WINDOW / DOOR JAMB FLASHING FOR VERTICAL CLADDING ON CAVITY

Detail Number: RI-ESLW012B

Date drawn: 02/02/2018

Scale: 1 : 5@ A4

BUILDING WRAP DRESSED INTO
OPENING WITH 50mm RETURN TO
INSIDE OF FRAME WITH WINDOW
FLASHING TAPE INSTALLED OVER
WRAP TO CORNERS

SEPARATION OF METAL
CLADDING & TIMBER BATTEN

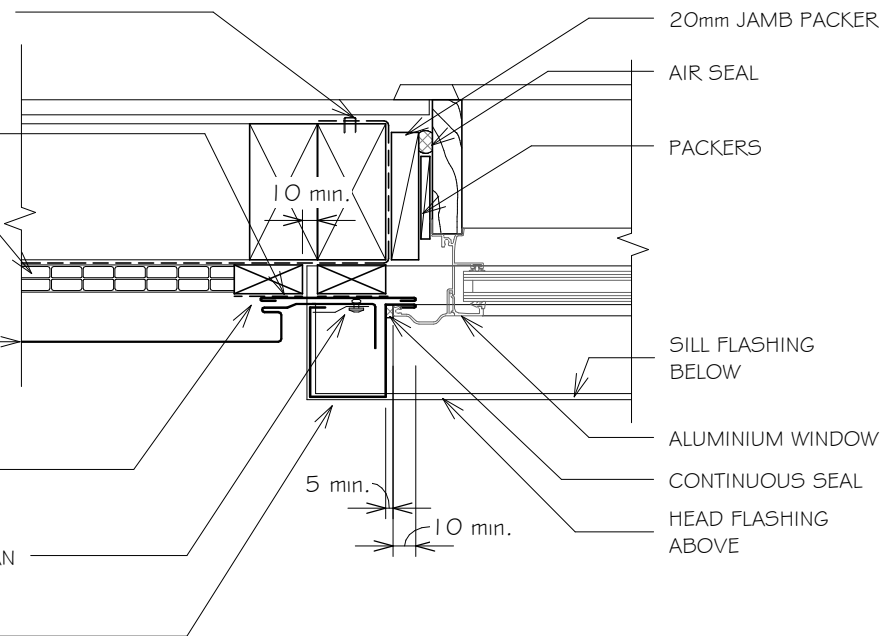
CASTELLATED CAVITY
BATTEN
BETWEEN VERTICAL BATTENS

ROOFING INDUSTRIES
EUROSTYLE INTERLOCKING
CLADDING AND SOFFIT
SECRET CLIP FIXED

ROOFING INDUSTRIES BACK
TRAY* FLASHING RUN FROM
TOP OF HEAD FLASHING TO
GROUND OR EXIT POINT

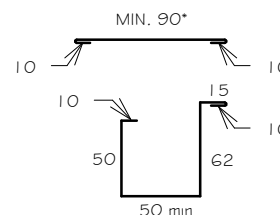
GRAB FLASHING RIVET FIXED TO PAN

ROOFING INDUSTRIES JAMB
FLASHING WITH 10mm FOLD
BEHIND GRAB FLASHING

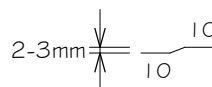


GENERAL NOTES:

1. REFER TO E2/AS 1 FOR GENERAL WINDOW OPENING FOR WRAPPING OF FRAMED OPENING PRIOR TO WINDOW INSTALLATION.
2. A MIN. OF 8mm EFFECTIVE COVER AT SILLS SHALL BE PERMITTED WHERE NECESSARY TO ALLOW FOR TOLERANCES.
3. WINDOW PROFILE TO BE SELECTED TO ACHIEVE COVER SHOWN IN DETAILS.
4. ARCHITRAVE'S ARE SHOWN FOR CONSISTENCY ONLY, DETAIL MAY BE USED WITH REBATED LINER.
5. LIAISE WITH WINDOW MANUFACTURER PRIOR TO INSTALLATION.
6. ALLOW FOR SEPARATION FROM ANY CORROSIVE TIMBER TREATMENTS.
7. ALL DIMENSIONS SHOWN ON DRAWINGS ARE NOMINAL +/- 5mm
8. CASTELLATED TIMBER BATTEN OR APPROVED DRAINED BATTEN MAY BE USED WITH THIS SYSTEM.



REFERENCE FLASHINGS:
NZ METAL ROOF AND WALL
CLADDING CODE OF PRACTICE.
E2/AS 1 OR REFER MANUF DETAILING.
DIMENSIONS ARE INDICATIVE ONLY



- * Back tray size may require to increase to ensure coverage at ends of head flashings. Back Tray to run from top of head flashing to ground or exit point.
- * (Dimensions are indicative only)
- * Turn down end of head flashing

NOTES:

- These details are generally in compliance the NZ Metal Roof & Wall Cladding Code of Practice and in some cases specific details by 'Roofing Industries'. Eurostyle falls outside the criteria of E2/AS 1 and this document is therefore not applicable.
- The building designer is ultimately responsible to ensure that details used meet the requirements of the NZ Building Code for the specific project.
- Details of the supporting structure including cavity battens are indicative only and are the responsibility of the building designer. For steel framed buildings thermal break cavity battens may be required.
- Underlay selection and building wrap types are the responsibility of the designer.
- These details are for Roofing Industries profile/s as nominated and may not be applicable to other profiles.
- This drawing is the copyright of 'Roofing Industries' and can only be copied or reproduced with their permission.
- These details to be read with Roofing Industries profile technical summary regarding wind loads and fixings.
- Further information can be obtained from the NZ Metal Roof & Wall Cladding Code of Practice: www.metalroofing.org.nz or E2/AS 1.

Copyright detail © 2017

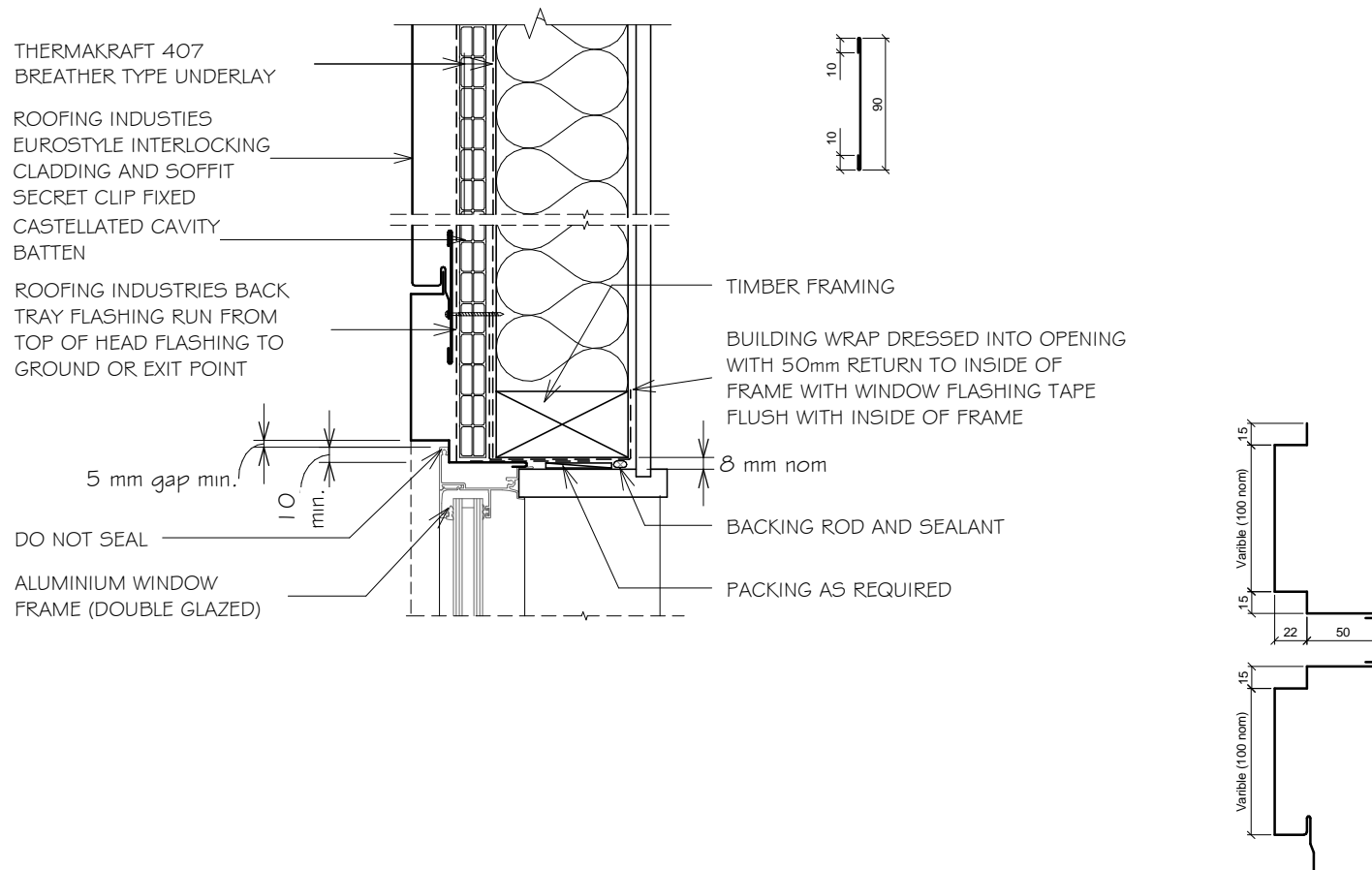


EUROSTYLE INTERLOCKING PANEL CLADDING WINDOW / DOOR JAMB FLASHING FOR VERTICAL CLADDING ON CAVITY

Detail Number: RI-ESLWO12B-1

Date drawn: 02/02/2018

Scale: 1 : 5@ A4



GENERAL NOTES:

1. REFER TO E2/AS1 FOR GENERAL WINDOW OPENING FOR WRAPPING OF FRAMED OPENING PRIOR TO WINDOW INSTALLATION.
2. A MIN. OF 8mm EFFECTIVE COVER AT SILLS SHALL BE PERMITTED WHERE NECESSARY TO ALLOW FOR TOLERANCES.
3. WINDOW PROFILE TO BE SELECTED TO ACHIEVE COVER SHOWN IN DETAILS.
4. DETAIL MAY BE USED WITH REBATED LINER OR ARCHITRAVE.
5. LIAISE WITH WINDOW MANUFACTURER PRIOR TO INSTALLATION.
6. ALLOW FOR SEPARATION FROM ANY CORROSIVE TIMBER TREATMENTS.
7. SEAL HEAD FLASHING TO WINDOW IN VERY HIGH & EXTRA HIGH WIND ZONES.
8. ALL DIMENSIONS SHOWN ON DRAWINGS ARE NOMINAL +/- 5mm
9. CASTELLATED TIBMER BATTEN OR APPROVED DRAINED BATTEN MAY BE USED WITH THIS SYSTEM.

NOTES:

- These details are generally in compliance the NZ Metal Roof & Wall Cladding Code of Practice and in some cases specific details by 'Roofing Industries'. Eurostyle falls outside the criteria of E2/AS1 and this document is therefore not applicable.
- The building designer is ultimately responsible to ensure that details used meet the requirements of the NZ Building Code for the specific project.
- Details of the supporting structure including cavity battens are indicative only and are the responsibility of the building designer. For steel framed buildings thermal break cavity battens may be required.
- Underlay selection and building wrap types are the responsibility of the designer.
- These details are for Roofing Industries profile/s as nominated and may not be applicable to other profiles.
- This drawing is the copyright of 'Roofing Industries' and can only be copied or reproduced with their permission.
- These details to be read with Roofing Industries profile technical summary regarding wind loads and fixings.
- Further information can be obtained from the NZ Metal Roof & Wall Cladding Code of Practice: www.metalroofing.org.nz or E2/AS1.

Copyright detail © 2017

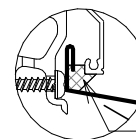
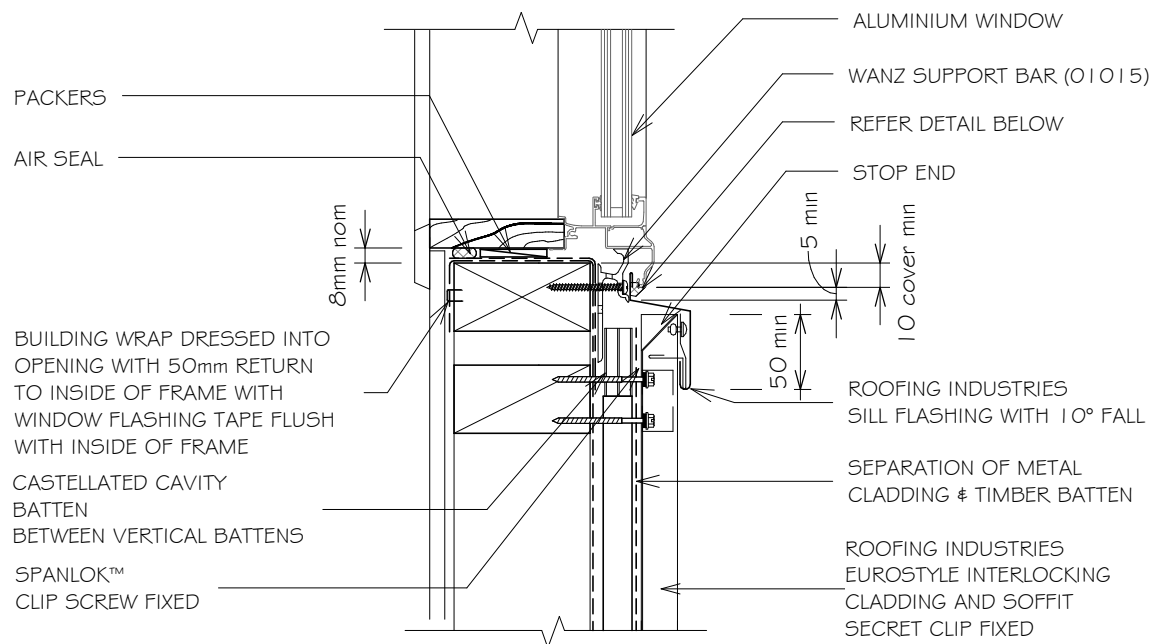


EUROSTYLE INTERLOCKING PANEL CLADDING WINDOW / DOOR SILL FLASHING FOR VERTICAL CLADDING ON CAVITY

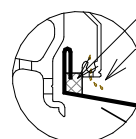
Detail Number: RI-ESLW012C

Date drawn: 02/02/2018

Scale: 1 : 5@ A4



Continuous seal



Continuous seal
Keep drainage
passage clear

NOTE:
Sill sealing method for flange
end type drainage systems



Sill flashings stop ended to
receive jamb flashings
(Dimensions are indicative only
& show minimum lap covers)

GENERAL NOTES:

1. REFER TO E2/AS1 FOR GENERAL WINDOW OPENING FOR WRAPPING OF FRAMED OPENING PRIOR TO WINDOW INSTALLATION.
2. A MIN. OF 8mm EFFECTIVE COVER AT SILLS SHALL BE PERMITTED WHERE NECESSARY TO ALLOW FOR TOLERANCES.
3. WINDOW PROFILE TO BE SELECTED TO ACHIEVE COVER SHOWN IN DETAILS.
4. ARCHITRAVE'S ARE SHOWN FOR CONSISTENCY ONLY, DETAIL MAY BE USED WITH REBATED LINER.
5. WHERE SUPPORT BRACKETS ARE REQUIRED BY THE WINDOW MANUFACTURER TO CARRY THE FRAME AND GLAZING LOADS THEY MUST BE SUPPLIED AS AN INTEGRAL PART OF THE WINDOW MANUFACTURER'S RECOMMENDATIONS.
6. LIAISE WITH WINDOW MANUFACTURER PRIOR TO INSTALLATION.
7. ALLOW FOR SEPARATION FROM ANY CORROSIVE TIMBER TREATMENTS.
8. ALL DIMENSIONS SHOWN ON DRAWINGS ARE NOMINAL +/- 5mm
9. CASTELLATED TIMBER BATTEN OR APPROVED DRAINED BATTEN MAY BE USED WITH THIS SYSTEM.

REFERENCE FLASHINGS:
NZ METAL ROOF AND WALL CLADDING
CODE OF PRACTICE. E2/AS1 OR
REFER MANUF DETAILING.
DIMENSIONS ARE INDICATIVE ONLY

NOTES:

- These details are generally in compliance the NZ Metal Roof & Wall Cladding Code of Practice and in some cases specific details by 'Roofing Industries'. Eurostyle falls outside the criteria of E2/AS1 and this document is therefore not applicable.
- The building designer is ultimately responsible to ensure that details used meet the requirements of the NZ Building Code for the specific project.
- Details of the supporting structure including cavity battens are indicative only and are the responsibility of the building designer. For steel framed buildings thermal break cavity battens may be required.
- Underlay selection and building wrap types are the responsibility of the designer.
- These details are for Roofing Industries profile/s as nominated and may not be applicable to other profiles.
- This drawing is the copyright of 'Roofing Industries' and can only be copied or reproduced with their permission.
- These details to be read with Roofing Industries profile technical summary regarding wind loads and fixings.
- Further information can be obtained from the NZ Metal Roof & Wall Cladding Code of Practice: www.metalroofing.org.nz or E2/AS1.

Copyright detail © 2017



EUROSTYLE INTERLOCKING PANEL CLADDING WINDOW / DOOR SILL FLASHING FOR VERTICAL CLADDING ON CAVITY

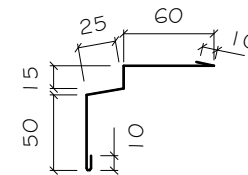
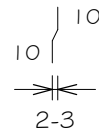
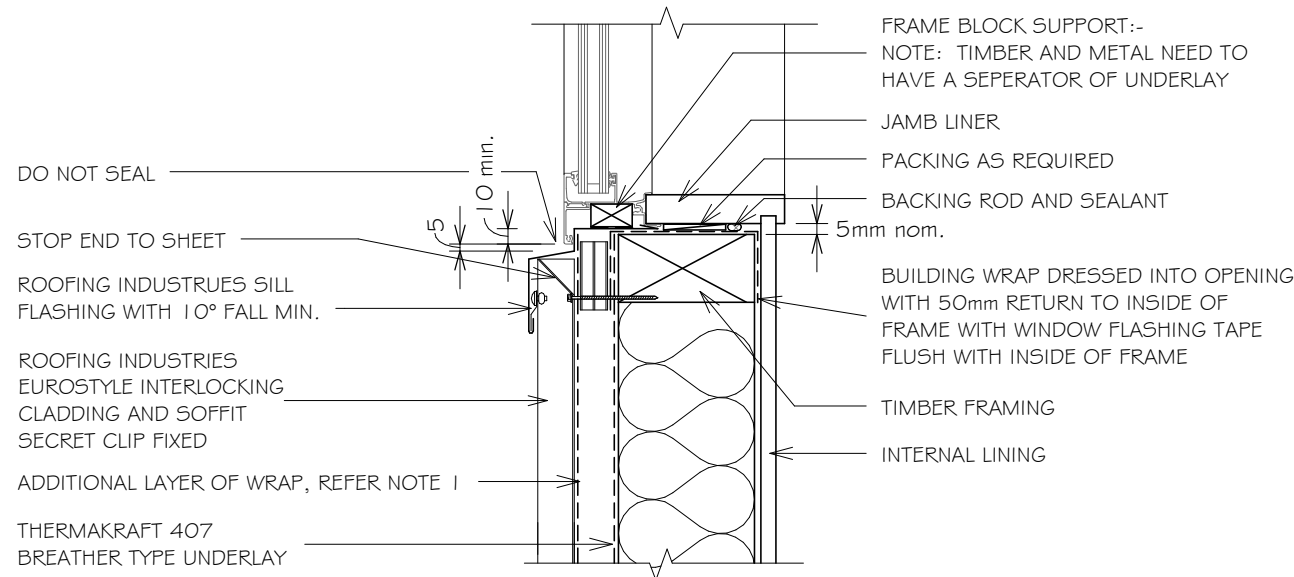
Detail Number: RI-ESLWO12C-1

Date drawn: 02/02/2018

Scale: 1 : 5@ A4

GENERAL NOTES:

1. FOR FIXING METHODS REFER TO SPECIFICATIONS. REFER TO E2/AS1 FOR GENERAL WINDOW OPENING FOR WRAPPING OF FRAMED OPENING PRIOR TO WINDOW INSTALLATION.
2. A MIN. OF 8mm EFFECTIVE COVER AT SILLS SHALL BE PERMITTED WHERE NECESSARY TO ALLOW FOR TOLERANCES.
3. WINDOW PROFILE TO BE SELECTED TO ACHIEVE COVER SHOWN IN DETAILS.
4. ARCHITRAVE'S ARE SHOWN FOR CONSISTENCY ONLY, DETAIL MAY BE USED WITH REBATED LINER. WHERE SUPPORT BRACKETS ARE REQUIRED BY THE WINDOW MANUFACTURER TO CARRY THE FRAME AND GLAZING LOADS THEY MUST BE SUPPLIED AS AN INTEGRAL PART OF THE WINDOW MANUFACTURER'S RECOMMENDATIONS.
5. LIAISE WITH WINDOW MANUFACTURER PRIOR TO INSTALLATION.
6. ALLOW FOR SEPARATION FROM CORROSIVE TIMBER TREATMENTS.
7. ALL DIMENSIONS SHOWN ON DRAWINGS ARE NOMINAL +/- 5mm
8. CASTELLATED TIMBER BATTEN OR APPROVED DRAINED BATTEN MAY BE USED WITH THIS SYSTEM.



Sill tray 10mm turned up at ends to receive jamb flashings

NOTES:

- These details are generally in compliance the NZ Metal Roof & Wall Cladding Code of Practice and in some cases specific details by 'Roofing Industries'. Eurostyle falls outside the criteria of E2/AS1 and this document is therefore not applicable.
- The building designer is ultimately responsible to ensure that details used meet the requirements of the NZ Building Code for the specific project.
- Details of the supporting structure including cavity battens are indicative only and are the responsibility of the building designer. For steel framed buildings thermal break cavity battens may be required.
- Underlay selection and building wrap types are the responsibility of the designer.
- These details are for Roofing Industries profile/s as nominated and may not be applicable to other profiles.
- This drawing is the copyright of 'Roofing Industries' and can only be copied or reproduced with their permission.
- These details to be read with Roofing Industries profile technical summary regarding wind loads and fixings.
- Further information can be obtained from the NZ Metal Roof & Wall Cladding Code of Practice: www.metalroofing.org.nz or E2/AS1.

Copyright detail © 2017

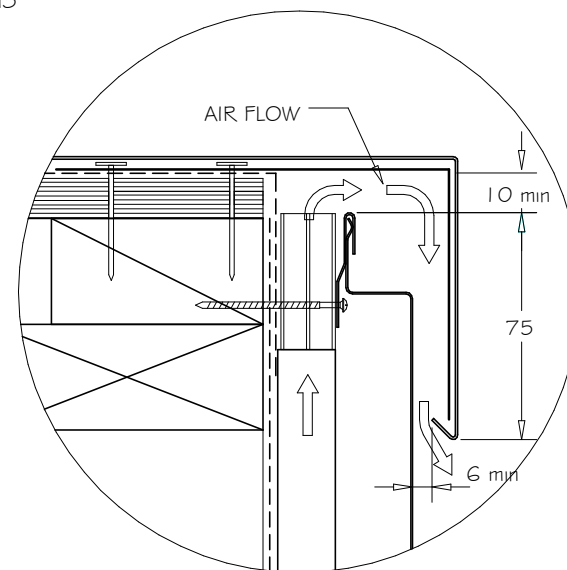
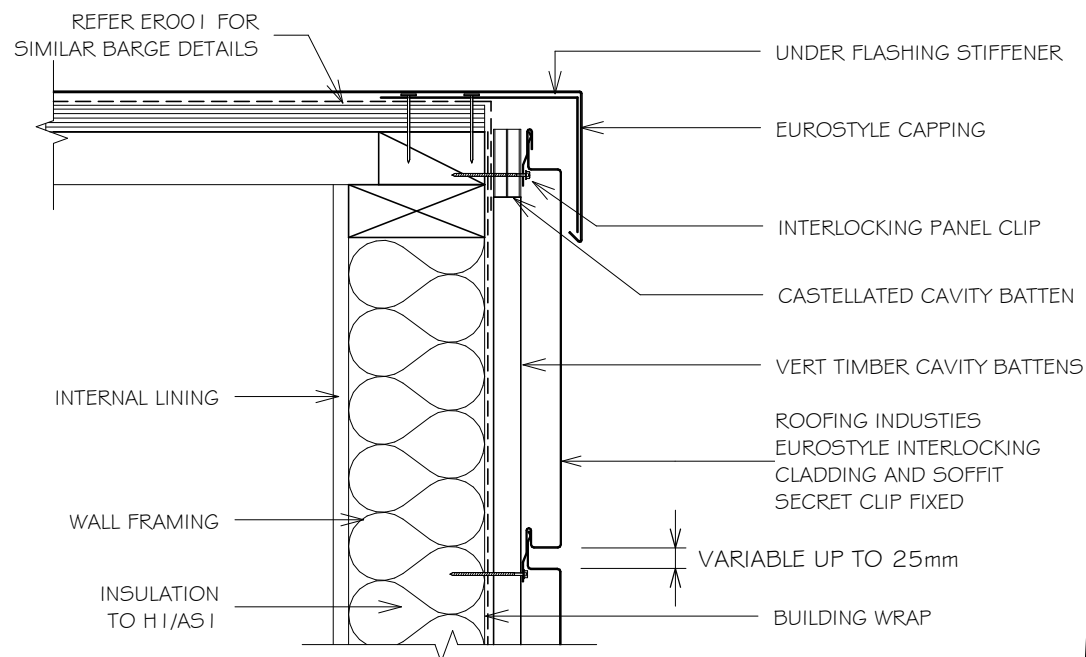


EUROSTYLE INTERLOCKING PANEL CLADDING CAPPING DETAIL FOR HORIZONTAL CLADDING ON CAVITY

Detail Number: RI-ESLW02 | A

Date drawn: 02/02/2018

Scale: 1 : 5 @ A4



NOTES:

1. CAVITY BATTENS CONTAINING CORROSIVE MATERIAL MUST BE SEPARATED FROM METAL CLADDING BY DPC, BUILDING WRAP, PVC OR PAINTING.
2. FOR FIXING METHODS REFER TO SPECIFICATIONS.
3. THIS DETAIL TO BE CONFIRMED BY ROOFING INDUSTRIES TECHNICAL DEPT PRIOR TO USE.
4. CLOSE OFF ANY ROOF VENTILATION TO WALL CAVITY.
5. ALL DIMENSIONS SHOWN ON DRAWINGS ARE NOMINAL ± 5 mm
6. CASTELLATED TIMBER BATTEN OR APPROVED DRAINED BATTEN MAY BE USED WITH THIS SYSTEM.

NOTES:

- These details are generally in compliance the NZ Metal Roof & Wall Cladding Code of Practice and in some cases specific details by 'Roofing Industries'. Eurostyle falls outside the criteria of E2/AS1 and this document is therefore not applicable.
- The building designer is ultimately responsible to ensure that details used meet the requirements of the NZ Building Code for the specific project.
- Details of the supporting structure including cavity battens are indicative only and are the responsibility of the building designer. For steel framed buildings thermal break cavity battens may be required.
- Underlay selection and building wrap types are the responsibility of the designer.
- These details are for Roofing Industries profile/s as nominated and may not be applicable to other profiles.
- This drawing is the copyright of 'Roofing Industries' and can only be copied or reproduced with their permission.
- These details to be read with Roofing Industries profile technical summary regarding wind loads and fixings.
- Further information can be obtained from the NZ Metal Roof & Wall Cladding Code of Practice: www.metalroofing.org.nz or E2/AS1.

Copyright detail © 2017

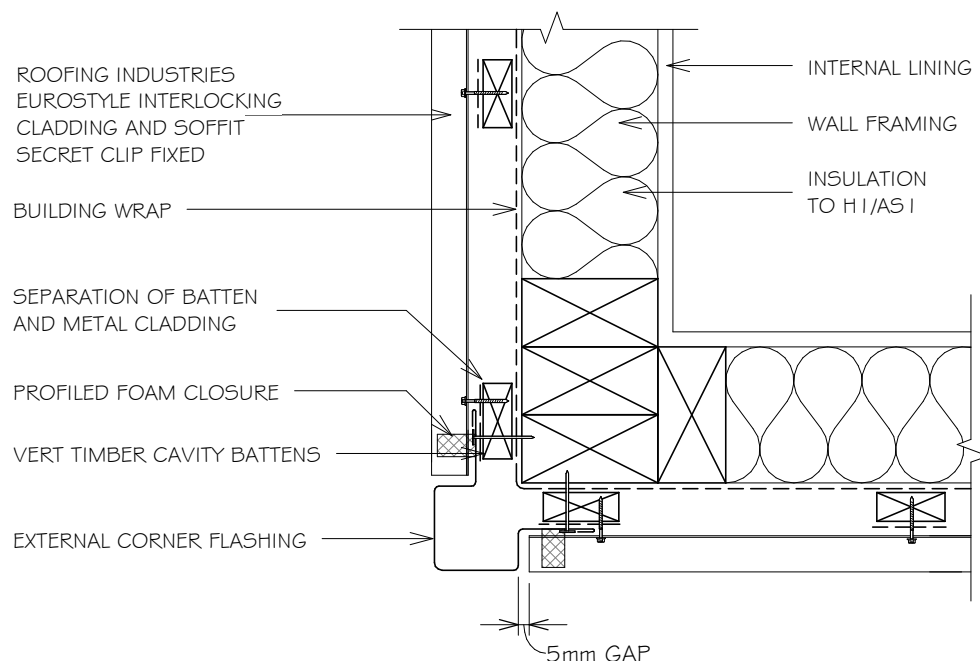


EUROSTYLE INTERLOCKING PANEL CLADDING EXTERNAL CORNER FLASHING FOR HORIZONTAL CLADDING ON CAVITY

Detail Number: RI-ESLW023A

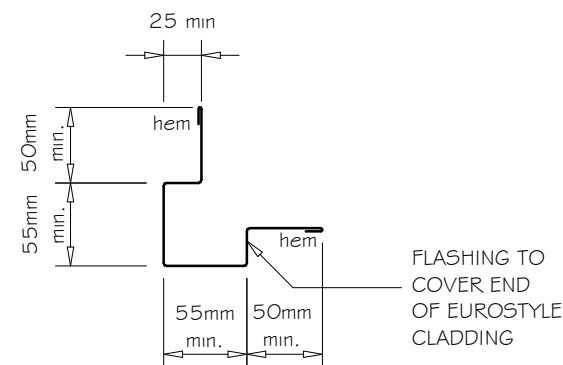
Date drawn: 02/02/2018

Scale: 1 : 5@ A4



NOTES:

1. CAVITY BATTENS CONTAINING CORROSIVE MATERIAL MUST BE SEPARATED FROM METAL CLADDING BY DPC, BUILDING WRAP, PVC OR PAINTING. FOR FIXING METHODS REFER TO SPECIFICATIONS.
2. THIS DETAIL TO BE CONFIRMED BY ROOFING INDUSTRIES TECHNICAL DEPT PRIOR TO USE.
3. ALL DIMENSIONS SHOWN ON DRAWINGS ARE NOMINAL $\pm 5\text{mm}$
4. CASTELLATED TIMBER BATTEN OR APPROVED DRAINED BATTEN MAY BE USED WITH THIS SYSTEM.



NOTES:

- These details are generally in compliance the NZ Metal Roof & Wall Cladding Code of Practice and in some cases specific details by 'Roofing Industries'. Eurostyle falls outside the criteria of E2/AS1 and this document is therefore not applicable.
- The building designer is ultimately responsible to ensure that details used meet the requirements of the NZ Building Code for the specific project.
- Details of the supporting structure including cavity battens are indicative only and are the responsibility of the building designer. For steel framed buildings thermal break cavity battens may be required.
- Underlay selection and building wrap types are the responsibility of the designer.
- These details are for Roofing Industries profile/s as nominated and may not be applicable to other profiles.
- This drawing is the copyright of 'Roofing Industries' and can only be copied or reproduced with their permission.
- These details to be read with Roofing Industries profile technical summary regarding wind loads and fixings.
- Further information can be obtained from the NZ Metal Roof & Wall Cladding Code of Practice: www.metalroofing.org.nz or E2/AS1.

Copyright detail © 2017

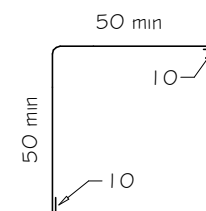
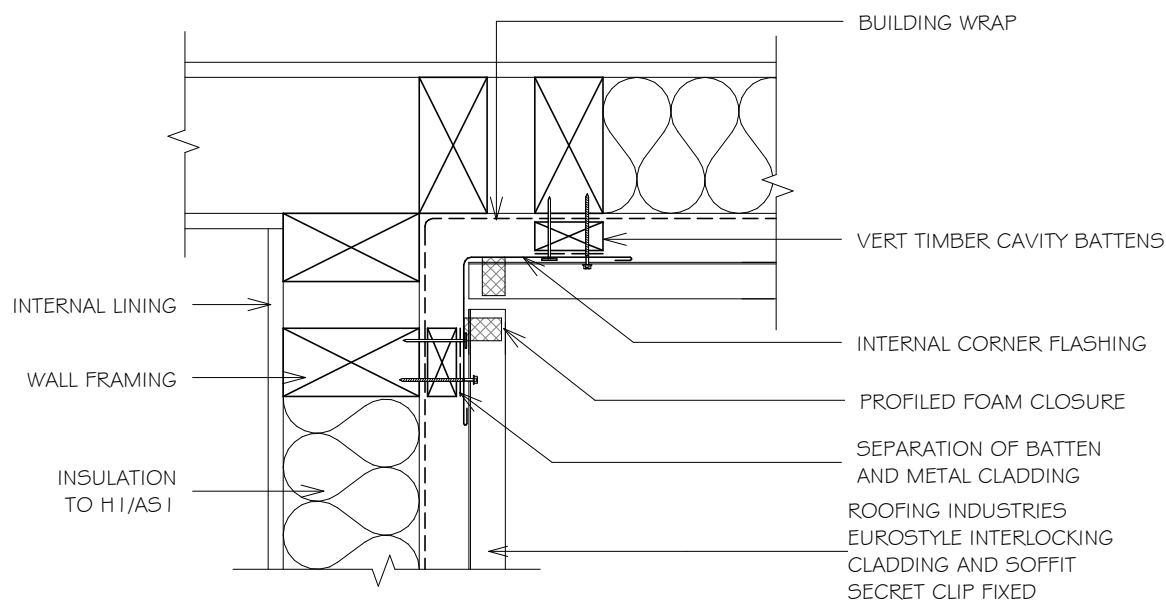


EUROSTYLE INTERLOCKING PANEL CLADDING INTERNAL CORNER FLASHING FOR HORIZONTAL CLADDING ON CAVITY TYPE 1

Detail Number: RI-ESLW024A

Date drawn: 02/02/2018

Scale: 1 : 5@ A4



NOTES:

1. CAVITY BATTENS CONTAINING CORROSIVE MATERIAL MUST BE SEPARATED FROM METAL CLADDING BY DPC, BUILDING WRAP, PVC OR PAINTING. FOR FIXING METHODS REFER TO SPECIFICATIONS.
2. THIS DETAIL TO BE CONFIRMED BY ROOFING INDUSTRIES TECHNICAL DEPT PRIOR TO USE.
3. ALL DIMENSIONS SHOWN ON DRAWINGS ARE NOMINAL +/- 5mm
4. CASTELLATED TIBMER BATTEN OR APPROVED DRAINED BATTEN MAY BE USED WITH THIS SYSTEM.

NOTES:

- These details are generally in compliance the NZ Metal Roof & Wall Cladding Code of Practice and in some cases specific details by 'Roofing Industries'. Eurostyle falls outside the criteria of E2/AS1 and this document is therefore not applicable.
- The building designer is ultimately responsible to ensure that details used meet the requirements of the NZ Building Code for the specific project.
- Details of the supporting structure including cavity battens are indicative only and are the responsibility of the building designer. For steel framed buildings thermal break cavity battens may be required.
- Underlay selection and building wrap types are the responsibility of the designer.
- These details are for Roofing Industries profile/s as nominated and may not be applicable to other profiles.
- This drawing is the copyright of 'Roofing Industries' and can only be copied or reproduced with their permission.
- These details to be read with Roofing Industries profile technical summary regarding wind loads and fixings.
- Further information can be obtained from the NZ Metal Roof & Wall Cladding Code of Practice: www.metalroofing.org.nz or E2/AS1.

Copyright detail © 2017

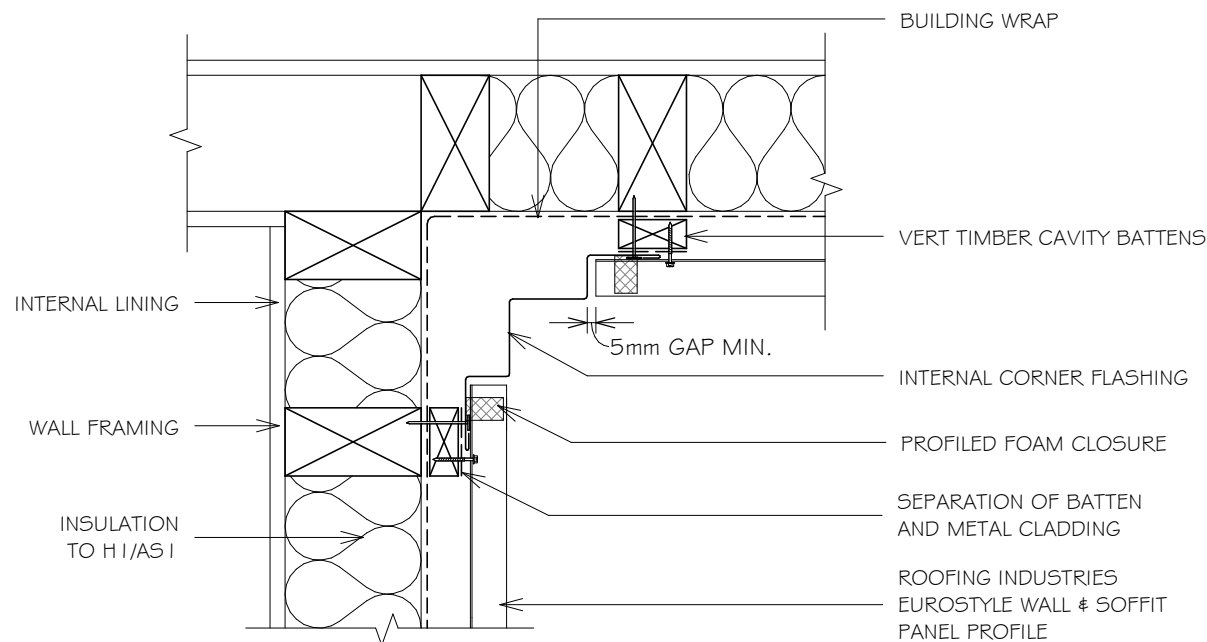


EUROSTYLE INTERLOCKING PANEL CLADDING INTERNAL CORNER FLASHING FOR HORIZONTAL CLADDING ON CAVITY TYPE 2

Detail Number: RI-ESLW024B

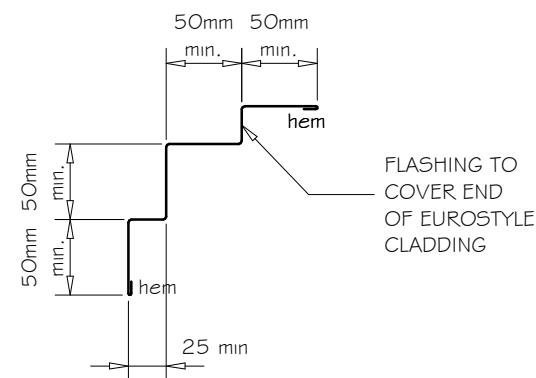
Date drawn: 02/02/2018

Scale: 1 : 5@ A4



NOTES:

1. CAVITY BATTENS CONTAINING CORROSIVE MATERIAL MUST BE SEPARATED FROM METAL CLADDING BY DPC, BUILDING WRAP, PVC OR PAINTING.
2. FOR FIXING METHODS REFER TO SPECIFICATIONS.
3. THIS DETAIL TO BE CONFIRMED BY ROOFING INDUSTRIES TECHNICAL DEPT PRIOR TO USE.
4. ALL DIMENSIONS SHOWN ON DRAWINGS ARE NOMINAL +/- 5mm
5. CASTELLATED TIMBER BATTEN OR APPROVED DRAINED BATTEN MAY BE USED WITH THIS SYSTEM.



NOTES:

- These details are generally in compliance the NZ Metal Roof & Wall Cladding Code of Practice and in some cases specific details by 'Roofing Industries'. Eurostyle falls outside the criteria of E2/AS1 and this document is therefore not applicable.
- The building designer is ultimately responsible to ensure that details used meet the requirements of the NZ Building Code for the specific project.
- Details of the supporting structure including cavity battens are indicative only and are the responsibility of the building designer. For steel framed buildings thermal break cavity battens may be required.
- Underlay selection and building wrap types are the responsibility of the designer.
- These details are for Roofing Industries profile/s as nominated and may not be applicable to other profiles.
- This drawing is the copyright of 'Roofing Industries' and can only be copied or reproduced with their permission.
- These details to be read with Roofing Industries profile technical summary regarding wind loads and fixings.
- Further information can be obtained from the NZ Metal Roof & Wall Cladding Code of Practice: www.metalroofing.org.nz or E2/AS1.

Copyright detail © 2017

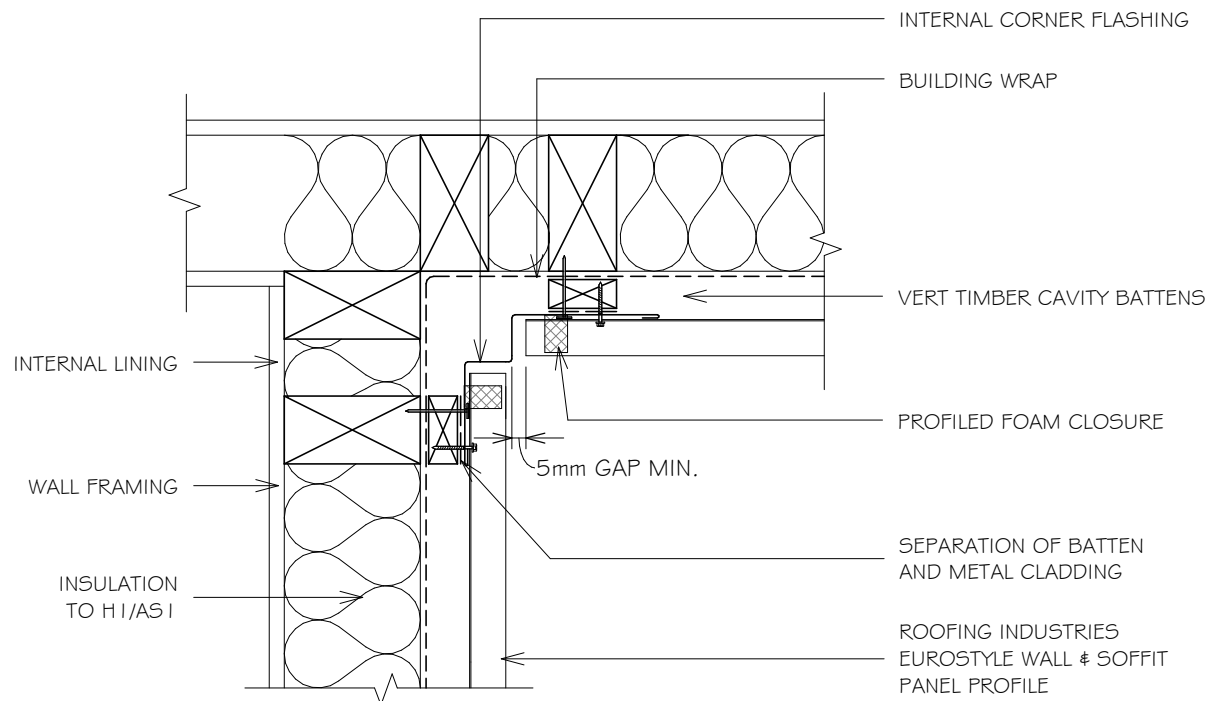


EUROSTYLE INTERLOCKING PANEL CLADDING INTERNAL CORNER FLASHING FOR HORIZONTAL CLADDING ON CAVITY TYPE 3

Detail Number: RI-ESLW024C

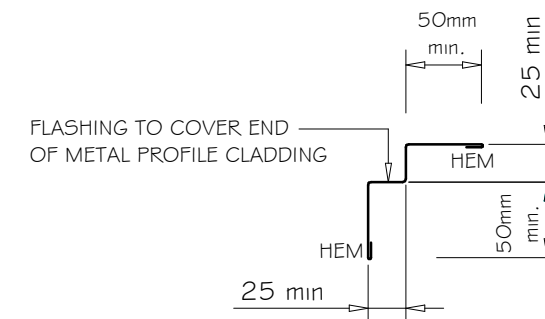
Date drawn: 02/02/2018

Scale: 1 : 5@ A4



NOTES:

1. CAVITY BATTENS CONTAINING CORROSIVE MATERIAL MUST BE SEPARATED FROM METAL CLADDING BY DPC, BUILDING WRAP, PVC OR PAINTING.
2. FOR FIXING METHODS REFER TO SPECIFICATIONS.
3. THIS DETAIL TO BE CONFIRMED BY ROOFING INDUSTRIES TECHNICAL DEPT PRIOR TO USE.
4. ALL DIMENSIONS SHOWN ON DRAWINGS ARE NOMINAL +/- 5mm
5. CASTELLATED TIMBER BATTEN OR APPROVED DRAINED BATTEN MAY BE USED WITH THIS SYSTEM.



Copyright detail © 2017

NOTES:

- These details are generally in compliance the NZ Metal Roof & Wall Cladding Code of Practice and in some cases specific details by 'Roofing Industries'. Eurostyle falls outside the criteria of E2/AS1 and this document is therefore not applicable.
- The building designer is ultimately responsible to ensure that details used meet the requirements of the NZ Building Code for the specific project.
- Details of the supporting structure including cavity battens are indicative only and are the responsibility of the building designer. For steel framed buildings thermal break cavity battens may be required.
- Underlay selection and building wrap types are the responsibility of the designer.
- These details are for Roofing Industries profile/s as nominated and may not be applicable to other profiles.
- This drawing is the copyright of 'Roofing Industries' and can only be copied or reproduced with their permission.
- These details to be read with Roofing Industries profile technical summary regarding wind loads and fixings.
- Further information can be obtained from the NZ Metal Roof & Wall Cladding Code of Practice: www.metalroofing.org.nz or E2/AS1.



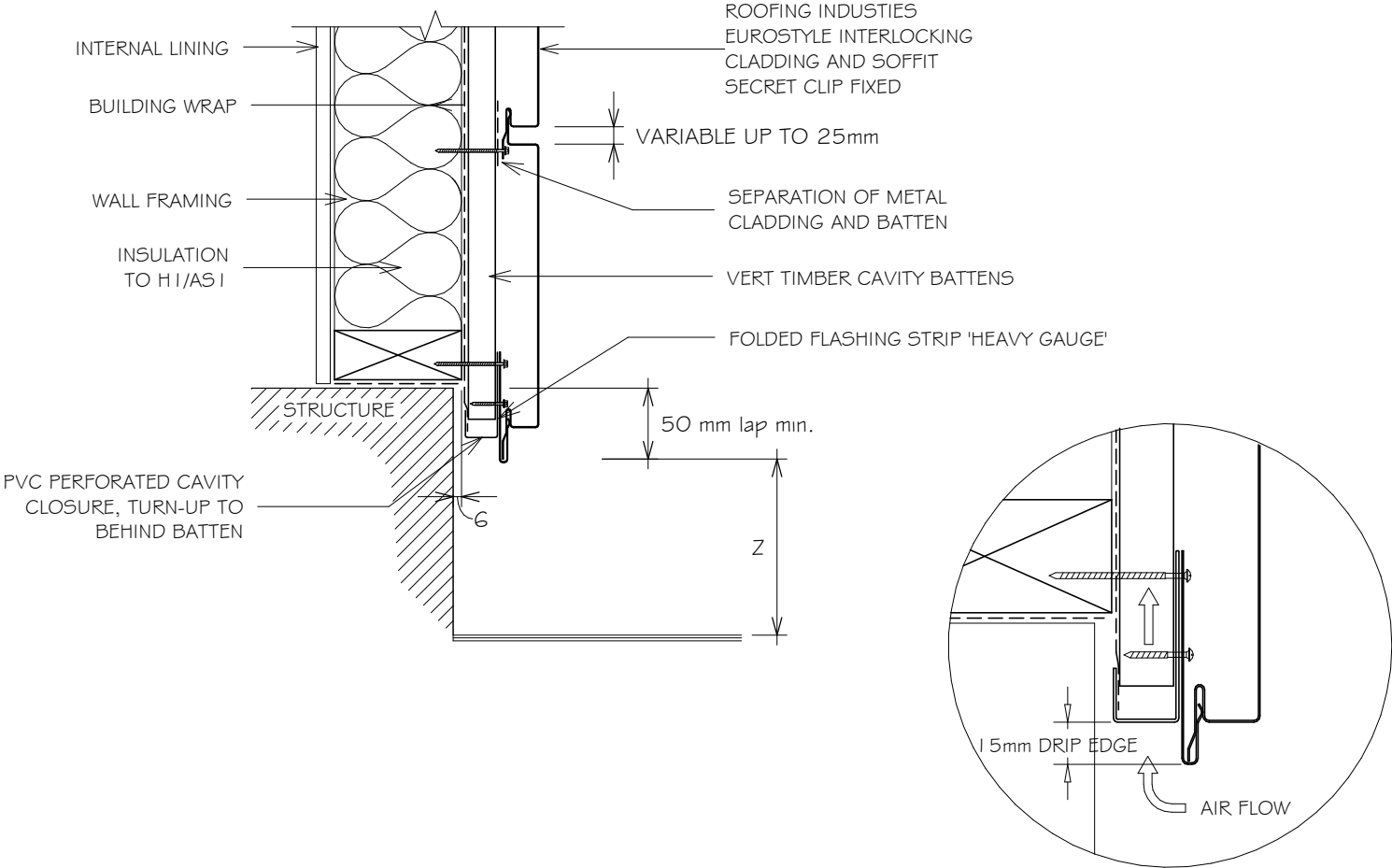
EUROSTYLE INTERLOCKING PANEL CLADDING

BASE DETAIL FOR HORIZONTAL CLADDING ON CAVITY

Detail Number: RI-ESLW025A

Date drawn: 02/02/2018

Scale: 1 : 5@ A4



- NOTES:
1. CAVITY BATTENS CONTAINING CORROSIVE MATERIAL MUST BE SEPARATED FROM METAL CLADDING BY DPC, BUILDING WRAP, PVC OR PAINTING.
 2. FOR FIXING METHODS REFER TO SPECIFICATIONS.
 3. THIS DETAIL TO BE CONFIRMED BY ROOFING INDUSTRIES TECHNICAL DEPT PRIOR TO USE.
 4. ALL DIMENSIONS SHOWN ON DRAWINGS ARE NOMINAL +/- 5mm
 5. CASTELLATED TIBMER BATTEN OR APPROVED DRAINED BATTEN MAY BE USED WITH THIS SYSTEM.

SET DOWN	MINIMUM
	Z
PAVED SURFACE	100mm
UNPAVED SURFACE	175mm

- NOTES:
- These details are generally in compliance the NZ Metal Roof & Wall Cladding Code of Practice and in some cases specific details by 'Roofing Industries'. Eurostyle falls outsider the criteria of E2/AS1 and this document is therefore not applicable.
 - The building designer is ultimatley responsible to ensure that details used meet the requirements of the NZ Building Code for the specific project.
 - Details of the supporting structure including cavity battens are indicative only and are the responsibility of the building designer. For steel framed buildings thermal break cavity battens may be required.
 - Underlay selection and building wrap types are the responsibility of the designer.
 - These details are for Roofing Industries profile/s as nominated and may not be applicable to other profiles.
 - This drawing is the copyright of 'Roofing Industries' and can only be copied or reproduced with their permission.
 - These details to be read with Roofing Industries profile technical summary regarding wind loads and fixings.
 - Further information can be obtained from the NZ Metal Roof & Wall Cladding Code of Practice: www.metalroofing.org.nz or E2/AS1.

Copyright detail © 2017

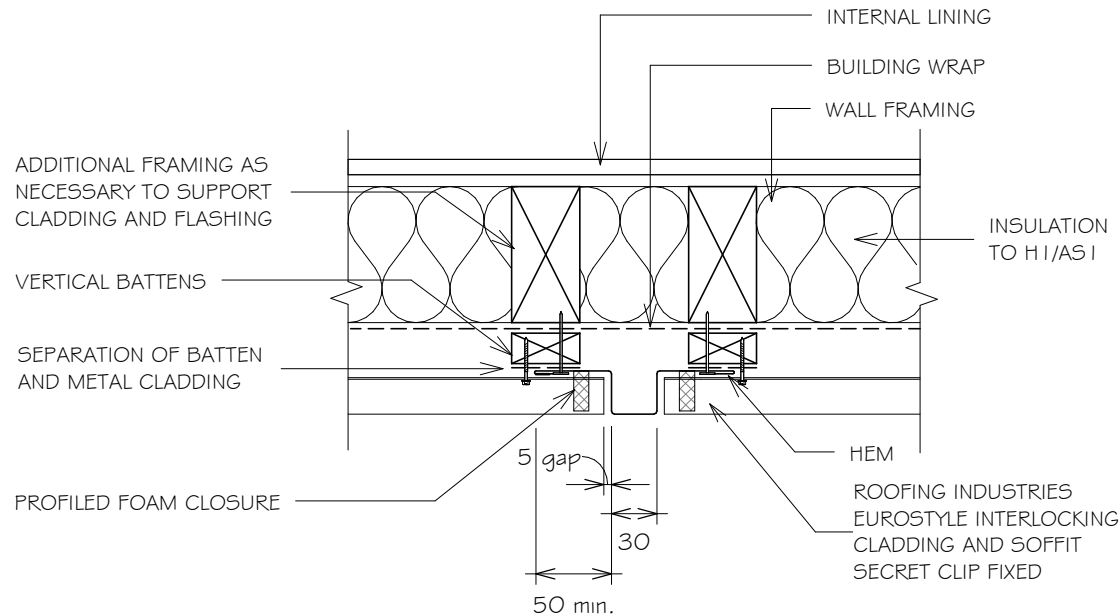


EUROSTYLE INTERLOCKING PANEL CLADDING TRANSVERSE JOINT DETAIL FOR HORIZONTAL CLADDING ON CAVITY

Detail Number: RI-ESLW030A

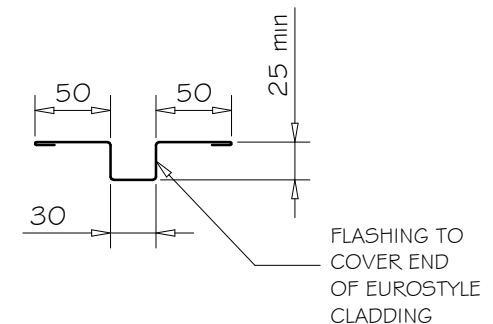
Date drawn: 02/02/2018

Scale: 1 : 5@ A4



NOTES:

1. CAVITY BATTENS CONTAINING CORROSIVE MATERIAL MUST BE SEPARATED FROM METAL CLADDING BY DPC, BUILDING WRAP, PVC OR PAINTING.
2. FOR FIXING METHODS REFER TO SPECIFICATIONS.
3. THIS DETAIL TO BE CONFIRMED BY ROOFING INDUSTRIES TECHNICAL DEPT PRIOR TO USE.
4. ALL DIMENSIONS SHOWN ON DRAWINGS ARE NOMINAL $\pm 5\text{mm}$
5. CASTELLATED TIMBER BATTEN OR APPROVED DRAINED BATTEN MAY BE USED WITH THIS SYSTEM.



NOTES:

- These details are generally in compliance the NZ Metal Roof & Wall Cladding Code of Practice and in some cases specific details by 'Roofing Industries'. Eurostyle falls outside the criteria of E2/AS1 and this document is therefore not applicable.
- The building designer is ultimately responsible to ensure that details used meet the requirements of the NZ Building Code for the specific project.
- Details of the supporting structure including cavity battens are indicative only and are the responsibility of the building designer. For steel framed buildings thermal break cavity battens may be required.
- Underlay selection and building wrap types are the responsibility of the designer.
- These details are for Roofing Industries profile/s as nominated and may not be applicable to other profiles.
- This drawing is the copyright of 'Roofing Industries' and can only be copied or reproduced with their permission.
- These details to be read with Roofing Industries profile technical summary regarding wind loads and fixings.
- Further information can be obtained from the NZ Metal Roof & Wall Cladding Code of Practice: www.metalroofing.org.nz or E2/AS1.

Copyright detail © 2017



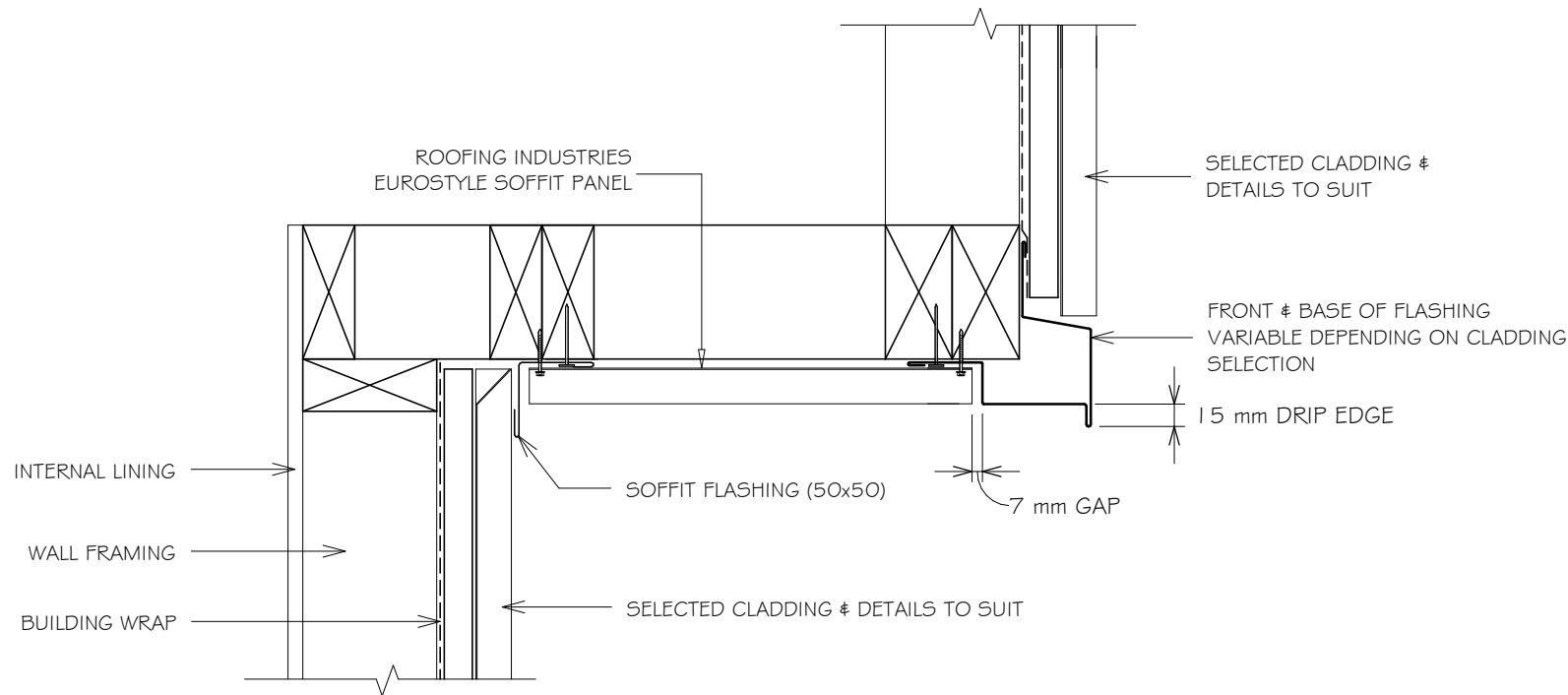
EUROSTYLE INTERLOCKING PANEL SOFFIT

TYPICAL SOFFIT DETAIL

Detail Number: RI-ESLW050A

Date drawn: 02/02/2018

Scale: 1 : 5@ A4



NOTES:

1. CAVITY BATTENS CONTAINING CORROSIVE MATERIAL MUST BE SEPARATED FROM METAL CLADDING BY DPC, BUILDING WRAP, PVC OR PAINTING.
2. FOR FIXING METHODS REFER TO SPECIFICATIONS.
3. THIS DETAIL TO BE CONFIRMED BY ROOFING INDUSTRIES TECHNICAL DEPT PRIOR TO USE.
4. ALL DIMENSIONS SHOWN ON DRAWINGS ARE NOMINAL +/- 5mm

NOTES:

- These details are generally in compliance the NZ Metal Roof & Wall Cladding Code of Practice and in some cases specific details by 'Roofing Industries'. Eurostyle falls outside the criteria of E2/AS1 and this document is therefore not applicable.
- The building designer is ultimately responsible to ensure that details used meet the requirements of the NZ Building Code for the specific project.
- Details of the supporting structure including cavity battens are indicative only and are the responsibility of the building designer. For steel framed buildings thermal break cavity battens may be required.
- Underlay selection and building wrap types are the responsibility of the designer.
- These details are for Roofing Industries profile/s as nominated and may not be applicable to other profiles.
- This drawing is the copyright of 'Roofing Industries' and can only be copied or reproduced with their permission.
- These details to be read with Roofing Industries profile technical summary regarding wind loads and fixings.
- Further information can be obtained from the NZ Metal Roof & Wall Cladding Code of Practice: www.metalroofing.org.nz or E2/AS1.

Copyright detail © 2017



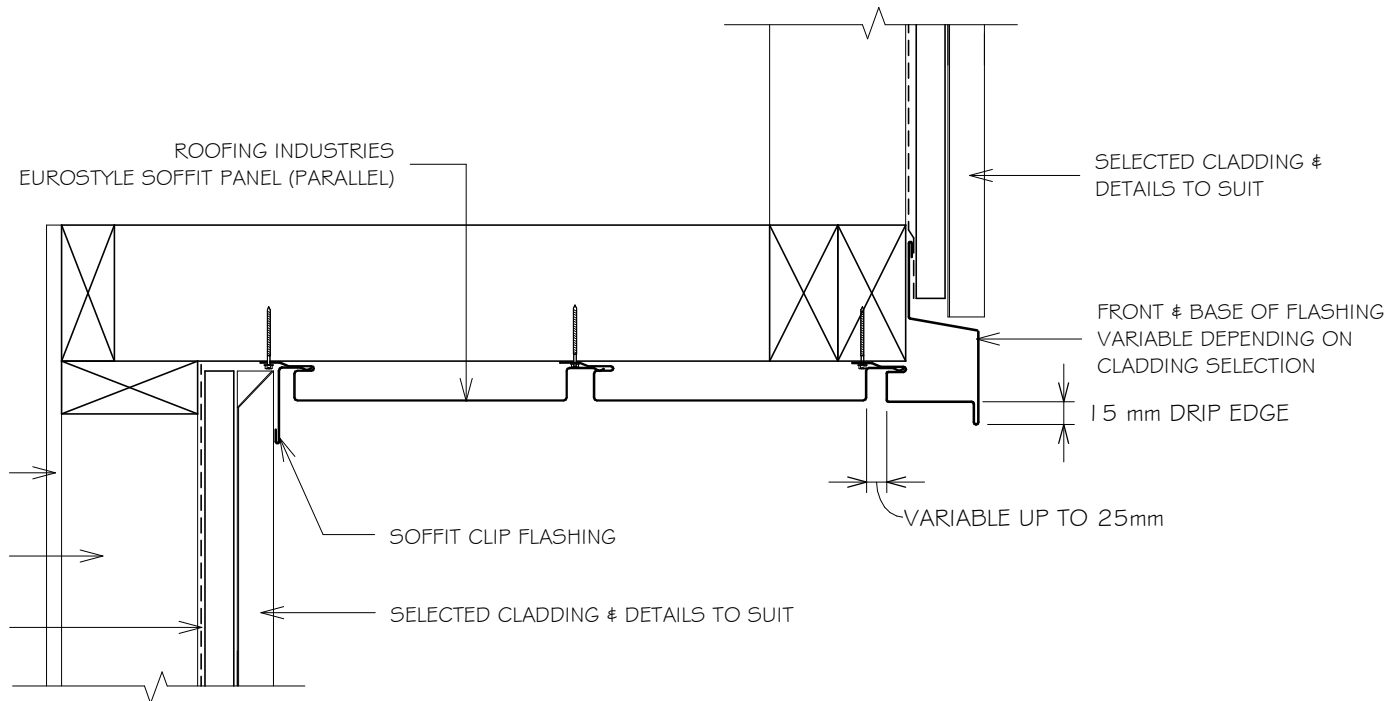
EUROSTYLE INTERLOCKING PANEL SOFFIT

TYPICAL SOFFIT DETAIL (PARALLEL)

Detail Number: RI-ESLW05 | A

Date drawn: 02/02/2018

Scale: 1 : 5@ A4



NOTES:

1. CAVITY BATTENS CONTAINING CORROSIVE MATERIAL MUST BE SEPARATED FROM METAL CLADDING BY DPC, BUILDING WRAP, PVC OR PAINTING.
2. FOR FIXING METHODS REFER TO SPECIFICATIONS.
3. THIS DETAIL TO BE CONFIRMED BY ROOFING INDUSTRIES TECHNICAL DEPT PRIOR TO USE.
4. ALL DIMENSIONS SHOWN ON DRAWINGS ARE NOMINAL +/- 5mm

NOTES:

- These details are generally in compliance the NZ Metal Roof & Wall Cladding Code of Practice and in some cases specific details by 'Roofing Industries'. Eurostyle falls outside the criteria of E2/AS1 and this document is therefore not applicable.
- The building designer is ultimately responsible to ensure that details used meet the requirements of the NZ Building Code for the specific project.
- Details of the supporting structure including cavity battens are indicative only and are the responsibility of the building designer. For steel framed buildings thermal break cavity battens may be required.
- Underlay selection and building wrap types are the responsibility of the designer.
- These details are for Roofing Industries profile/s as nominated and may not be applicable to other profiles.
- This drawing is the copyright of 'Roofing Industries' and can only be copied or reproduced with their permission.
- These details to be read with Roofing Industries profile technical summary regarding wind loads and fixings.
- Further information can be obtained from the NZ Metal Roof & Wall Cladding Code of Practice: www.metalroofing.org.nz or E2/AS1.

Copyright detail © 2017

