

# EUROSTYLE SPANLOK® VARIABLE PAN(VP) WALL CLADDING ON PLYWOOD SUBSTRATE RESIDENTIAL SPANLOK SHEET LIST

Detail Number: RI-ESRWVP-000A  
Date drawn: 03/04/2025  
Scale: @ A4

Residential Spanlok Sheet List on Plywood		
Sheet Number	Type	Sheet Name
EUROSTYLE SPANLOK® VARIABLE PAN(VP) WALL CLADDING ON PLYWOOD SUBSTRATE		
RI-ESRWVP-000A	EUROSTYLE SPANLOK® VARIABLE PAN(VP) WALL CLADDING ON PLYWOOD SUBSTRATE	RESIDENTIAL SPANLOK SHEET LIST
RI-ESRWVP-000B	EUROSTYLE SPANLOK® VARIABLE PAN(VP) WALL CLADDING ON PLYWOOD SUBSTRATE	PROFILES AND ACCESSORIES
RI-ESRWVP-000C	EUROSTYLE SPANLOK® VARIABLE PAN(VP) WALL CLADDING ON PLYWOOD SUBSTRATE	PROFILE SUMMARY
RI-ESRWVP-030A	EUROSTYLE SPANLOK® VARIABLE PAN(VP) WALL CLADDING ON PLYWOOD SUBSTRATE	WALL CLADDING EXTERNAL VERTICAL CORNER ON CAVITY
RI-ESRWVP-030B	EUROSTYLE SPANLOK® VARIABLE PAN(VP) WALL CLADDING ON PLYWOOD SUBSTRATE	EXTERNAL CORNER FOR VERTICAL CLADDING ON CAVITY WITH CLADDING CHANGE
RI-ESRWVP-040A	EUROSTYLE SPANLOK® VARIABLE PAN(VP) WALL CLADDING ON PLYWOOD SUBSTRATE	WALL CLADDING INTERNAL CORNER FOR VERTICAL CLADDING ON CAVITY
RI-ESRWVP-040B	EUROSTYLE SPANLOK® VARIABLE PAN(VP) WALL CLADDING ON PLYWOOD SUBSTRATE	INTERNAL CORNER FOR VERTICAL CLADDING ON CAVITY WITH CLADDING CHANGE
RI-ESRWVP-050	EUROSTYLE SPANLOK® VARIABLE PAN(VP) WALL CLADDING ON PLYWOOD SUBSTRATE	WALL CLADDING BASE OF VERTICAL CLADDING ON CAVITY
RI-ESRWVP-060	EUROSTYLE SPANLOK® VARIABLE PAN(VP) WALL CLADDING ON PLYWOOD SUBSTRATE	SOFFIT FLASHING FOR VERTICAL CLADDING
RI-ESRWVP-120	EUROSTYLE SPANLOK® VARIABLE PAN(VP) WALL CLADDING ON PLYWOOD SUBSTRATE	WINDOW / DOOR HEAD FLASHING FOR VERTICAL CLADDING (RECESSED WINDOW/DOOR OPTION 1)
RI-ESRWVP-120B	EUROSTYLE SPANLOK® VARIABLE PAN(VP) WALL CLADDING ON PLYWOOD SUBSTRATE	JAMB FLASHING FOR VERTICAL CLADDING (RECESSED WINDOW/DOOR OPTION 1)
RI-ESRWVP-120C	EUROSTYLE SPANLOK® VARIABLE PAN(VP) WALL CLADDING ON PLYWOOD SUBSTRATE	SILL FLASHING FOR VERTICAL CLADDING (RECESSED WINDOW/DOOR OPTION 1)
RI-ESRWVP-120D	EUROSTYLE SPANLOK® VARIABLE PAN(VP) WALL CLADDING ON PLYWOOD SUBSTRATE	ISOMETRIC FLASHING LAYOUT FOR VERTICAL CLADDING (RECESSED WINDOW/DOOR OPTION 1)
RI-ESRWVP-130A	EUROSTYLE SPANLOK® VARIABLE PAN(VP) WALL CLADDING ON PLYWOOD SUBSTRATE	WINDOW / DOOR HEAD FLASHING FOR VERTICAL CLADDING (RECESSED WINDOW/DOOR OPTION 2)
RI-ESRWVP-130B	EUROSTYLE SPANLOK® VARIABLE PAN(VP) WALL CLADDING ON PLYWOOD SUBSTRATE	JAMB FLASHING FOR VERTICAL CLADDING (RECESSED WINDOW/DOOR OPTION 2)
RI-ESRWVP-130C	EUROSTYLE SPANLOK® VARIABLE PAN(VP) WALL CLADDING ON PLYWOOD SUBSTRATE	SILL FLASHING FOR VERTICAL CLADDING (RECESSED WINDOW/DOOR OPTION 2)
RI-ESRWVP-130D	EUROSTYLE SPANLOK® VARIABLE PAN(VP) WALL CLADDING ON PLYWOOD SUBSTRATE	ISOMETRIC FLASHING LAYOUT FOR VERTICAL CLADDING (RECESSED WINDOW/DOOR OPTION 2)
RI-ESRWVP-140A	EUROSTYLE SPANLOK® VARIABLE PAN(VP) WALL CLADDING ON PLYWOOD SUBSTRATE	WINDOW / DOOR HEAD FLASHING FOR VERTICAL CLADDING (WINDOW/DOOR OPTION 3)
RI-ESRWVP-140B	EUROSTYLE SPANLOK® VARIABLE PAN(VP) WALL CLADDING ON PLYWOOD SUBSTRATE	JAMB FLASHING FOR VERTICAL CLADDING (WINDOW/DOOR OPTION 3)
RI-ESRWVP-140C	EUROSTYLE SPANLOK® VARIABLE PAN(VP) WALL CLADDING ON PLYWOOD SUBSTRATE	SILL FLASHING FOR VERTICAL CLADDING (WINDOW/DOOR OPTION 3)
RI-ESRWVP-140D	EUROSTYLE SPANLOK® VARIABLE PAN(VP) WALL CLADDING ON PLYWOOD SUBSTRATE	ISOMETRIC FLASHING LAYOUT FOR VERTICAL CLADDING (WINDOW/DOOR OPTION 3)
RI-ESRWVP-160	EUROSTYLE SPANLOK® VARIABLE PAN(VP) WALL CLADDING ON PLYWOOD SUBSTRATE	WALL PIPE PENETRATION

Copyright detail © 2024



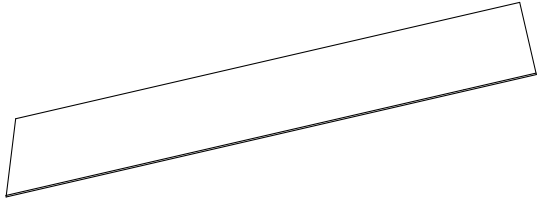
# EUROSTYLE SPANLOK® VARIABLE PAN(VP) WALL CLADDING ON PLYWOOD SUBSTRATE AND ACCESSORIES

Detail Number: RI-ESRWVP-000B

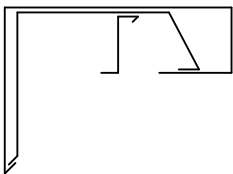
Date drawn: 03/04/2025

Scale: 1 : 5@ A3

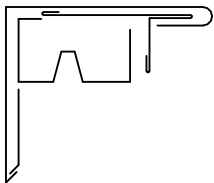
ROOFING INDUSTRIES EUROSTYLE SPANLOK® SECRET CLIP FIXED



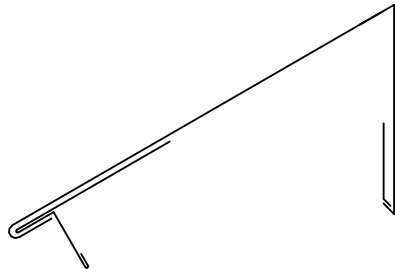
EUROSTYLE BARGE FLASHING



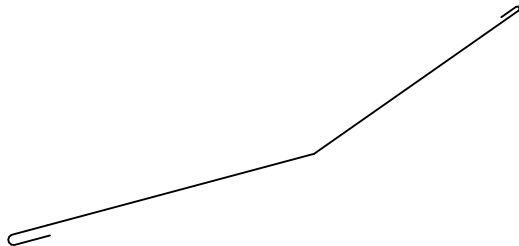
EUROSTYLE BARGE FLASHING



ROOFING INDUSTRIES EUROSTYLE HEAD BARGE FLASHING



ROOFING INDUSTRIES CHANGE IN PITCH FLASHING



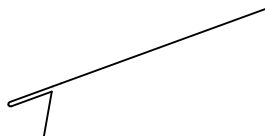
ROOFING INDUSTRIES EUROSTYLE SPANLOK® SECRET CLIP FIXED



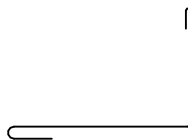
ROOFING INDUSTRIES UNDERFLASHING



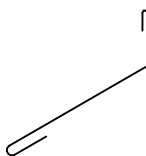
ROOFING INDUSTRIES GUTTER APRON FLASHING



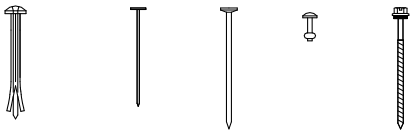
ROOFING INDUSTRIES ANGLE FLASHING



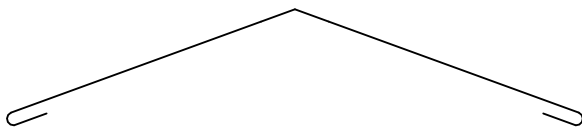
ROOFING INDUSTRIES APRON FLASHING



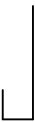
Fixings



ROOFING INDUSTRIES RIDGE FLASHING



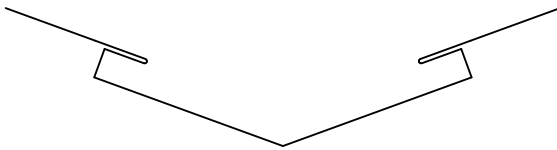
CAVITY CLOSER



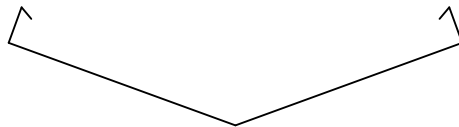
METAL ANGLE



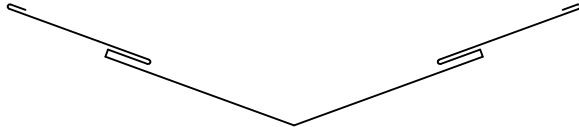
ROOFING INDUSTRIES VALLEY GUTTER



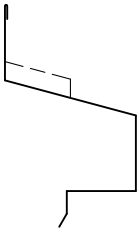
ROOFING INDUSTRIES VALLEY GUTTER



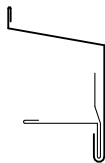
ROOFING INDUSTRIES DORMER VALLEY GUTTER



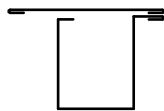
HEAD FLASHING



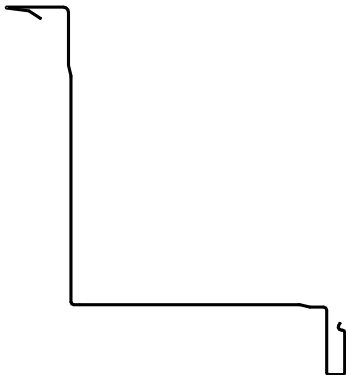
SILL FLASHING



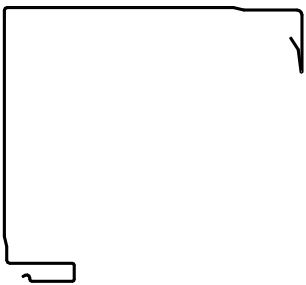
JAMB FLASHING



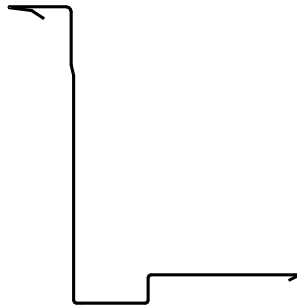
ROOFING INDUSTRIES SPANLOK EXTERNAL CORNER



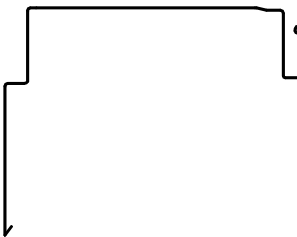
ROOFING INDUSTRIES SPANLOK INTERNAL CORNER



ROOFING INDUSTRIES SPANLOK EXTERNAL CORNER



ROOFING INDUSTRIES SPANLOK INTERNAL CORNER

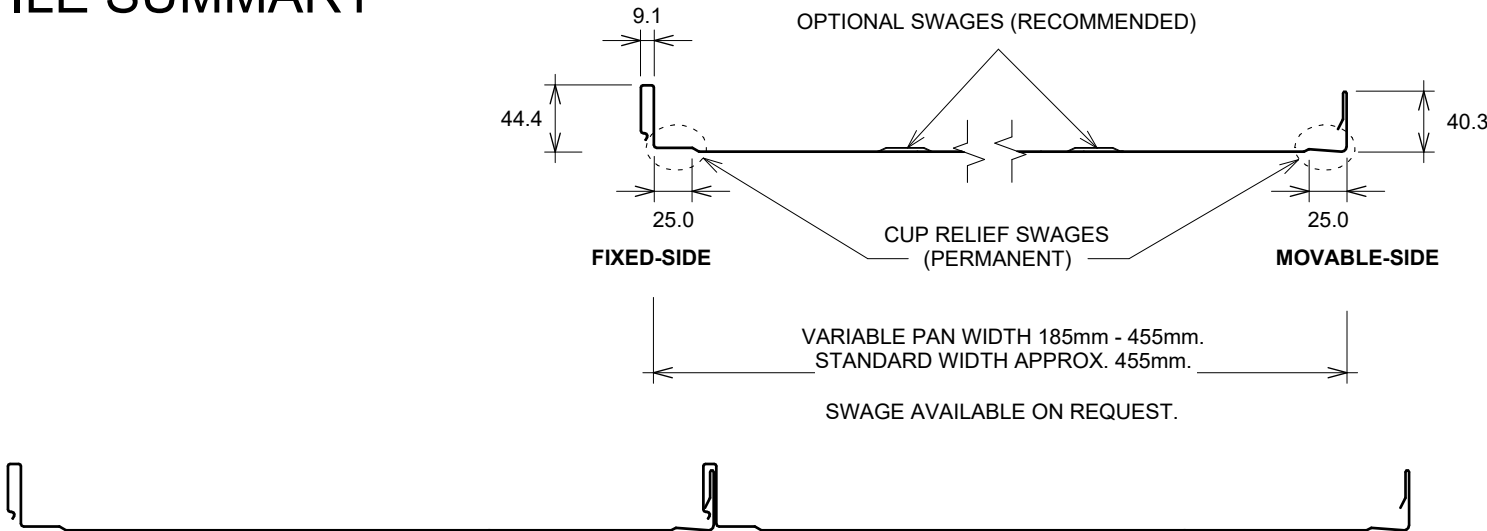


Copyright detail © 2025



# EUROSTYLE SPANLOK® VARIABLE PAN(VP) WALL CLADDING ON PLYWOOD SUBSTRATE PROFILE SUMMARY

Detail Number: RI-ESRWVP-000C  
Date drawn: 03/04/2025  
Scale: 1 : 5@ A4



## SPANLOK®

COIL SIZE	610mm	525mm	390mm	380mm	340mm
PAN WIDTH	455mm	370mm	235mm	225mm	185mm

Add 5mm to above pan size for effective cover.

### DETAIL ANNOTATION:

1. VARIANCES IN DIMENSIONS, SIZES & WIDTH CAN OCCUR DUE TO FEED COIL AND/OR REGIONAL MACHINE VARIANCES. IF WIDTHS/SIZES/DIMENSIONS ARE CRITICAL, DISCUSS WITH ROOFING INDUSTRIES SUPPLY BRANCH PRIOR TO PLACING ORDER
2. PANEL WIDTHS ARE GENERALLY DETERMINED BY COIL SIZE AVAILABILITY.
3. FOR SIZES OUTSIDE THESE NORMAL COIL WIDTHS PLEASE CONTACT ROOFING INDUSTRIES.
4. ROOFING INDUSTRIES 'EUROSTYLE SPANLOK' CAN BE INSTALLED WITHOUT A PLY SUBSTRATE. REFER TO ROOFING INDUSTRIES PRODUCT TECHNICAL STATEMENT AND INSTALLATION GUIDE.

### GENERAL NOTES:

- These details are to be read with Roofing Industries SPANLOK™ Product Technical Statement and installation guide.
- These details are generally in compliance with E2/AS1 and/or the NZ Metal Roof & Wall Cladding Code of Practice and in some cases specific details by 'Roofing Industries'.
- The building designer is ultimately responsible to ensure that details used meet the requirements of the NZ Building Code for the specific project.
- Details of the supporting structure including cavity battens are indicative only and are the responsibility of the building designer. For steel framed buildings thermal break cavity battens may be required.
- Roof/wall underlay selection are the responsibility of the designer. Underlay to be installed in accordance with underlay manufacturer's recommendations and requirements.
- These details are for Roofing Industries profile/s as nominated and may not be applicable to other profiles.
- This drawing is the copyright of 'Roofing Industries' and can only be copied or reproduced with their permission.
- Further information can be obtained from the NZ Metal Roof & Wall Cladding Code of Practice: [www.metalroofing.org.nz](http://www.metalroofing.org.nz) or E2/AS1.
- Details are for steel based materials, other substrates may require some changes.
- All dimensions are nominal.

Copyright detail © 2024

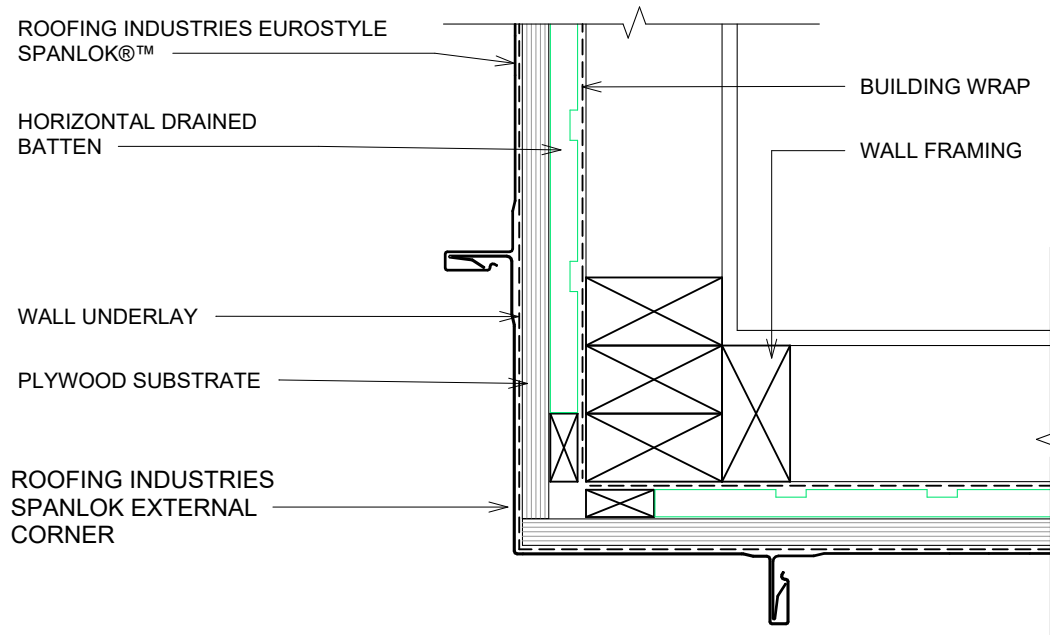


# EUROSTYLE SPANLOK® VARIABLE PAN(VP) WALL CLADDING ON PLYWOOD SUBSTRATE WALL CLADDING EXTERNAL VERTICAL CORNER ON CAVITY

Detail Number: RI-ESRWVP-030A

Date drawn: 03/04/2025

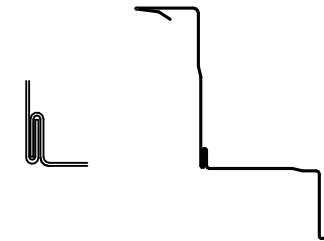
Scale: 1 : 5@ A4



## DETAIL ANNOTATION:

1. TREATED TIMBER CAVITY BATTENS CONTAINING CORROSIVE TREATMENTS MUST BE SEPARATED FROM METAL CLADDING
2. CASTELLATED BATTEN OR APPROVED DRAINED BATTEN CAN BE USED WITH THIS SYSTEM
3. FASTENERS TO BE COMPATIBLE WITH MATERIAL BEING FIXED AND THE SUITABLE GRADE FOR THE ENVIRONMENT IN WHICH LOCATED
4. CLIPS OMITTED FOR CLARITY, FIXED WITH TWO 8gx25mm CATEGORY 5 SELF DRILLING SCREWS FOR TREATED TIMBER
5. HIGH TO EXTRA HIGH WIND ZONES DOUBLE FIX UNDERFLASHING

## TWO PIECE FLASHING OPTION



## GENERAL NOTES:

- These details are to be read with Roofing Industries SPANLOK™ Product Technical Statement and installation guide.
- These details are generally in compliance with E2/AS1 and/or the NZ Metal Roof & Wall Cladding Code of Practice and in some cases specific details by 'Roofing Industries'.
- The building designer is ultimately responsible to ensure that details used meet the requirements of the NZ Building Code for the specific project.
- Details of the supporting structure including cavity battens are indicative only and are the responsibility of the building designer. For steel framed buildings thermal break cavity battens may be required.
- Roof/wall underlay selection are the responsibility of the designer. Underlay to be installed in accordance with underlay manufacturer's recommendations and requirements.
- These details are for Roofing Industries profile/s as nominated and may not be applicable to other profiles.
- This drawing is the copyright of 'Roofing Industries' and can only be copied or reproduced with their permission.
- Further information can be obtained from the NZ Metal Roof & Wall Cladding Code of Practice: [www.metalroofing.org.nz](http://www.metalroofing.org.nz) or E2/AS1.
- Details are for steel based materials, other substrates may require some changes.
- All dimensions are nominal.

Copyright detail © 2024

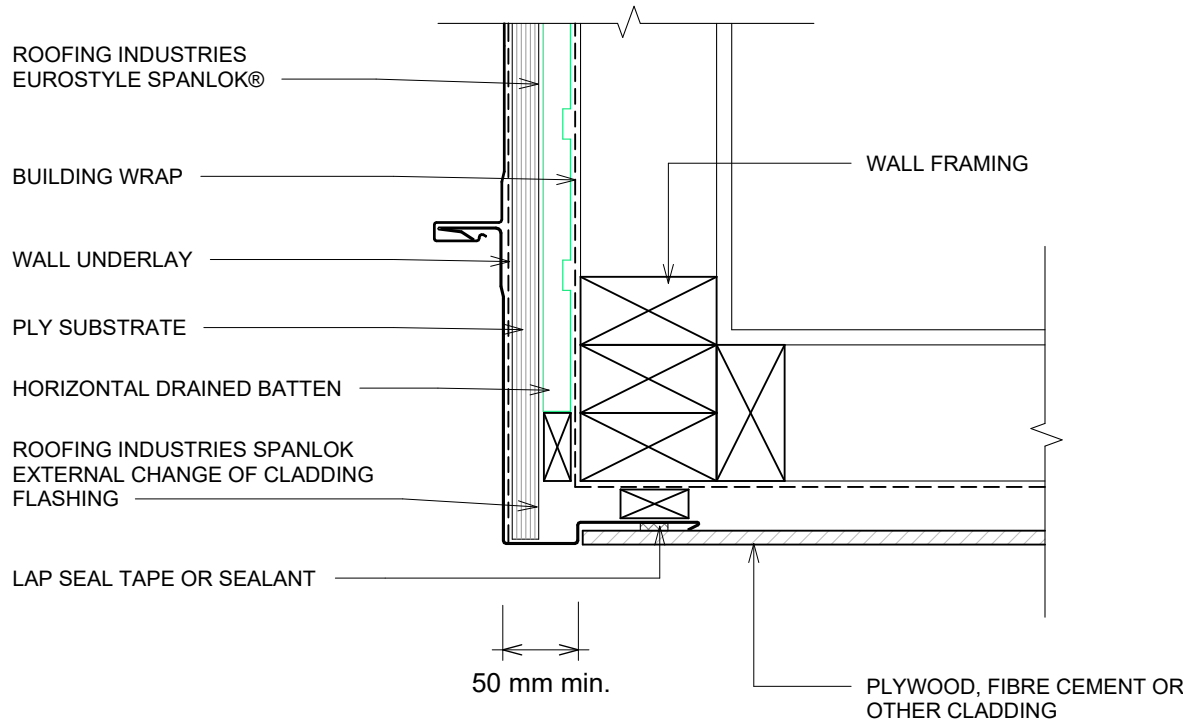


# EUROSTYLE SPANLOK® VARIABLE PAN(VP) WALL CLADDING ON PLYWOOD SUBSTRATE EXTERNAL CORNER FOR VERTICAL CLADDING ON CAVITY WITH CLADDING CHANGE

Detail Number: RI-ESRWVP-030B

Date drawn: 03/04/2025

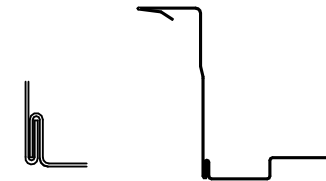
Scale: 1 : 5@ A4



## DETAIL ANNOTATION:

1. TREATED TIMBER CAVITY BATTENS CONTAINING CORROSIVE TREATMENTS MUST BE SEPARATED FROM METAL CLADDING
2. CASTELLATED BATTEN OR APPROVED DRAINED BATTEN CAN BE USED WITH THIS SYSTEM
3. FASTENERS TO BE COMPATIBLE WITH MATERIAL BEING FIXED AND THE SUITABLE GRADE FOR THE ENVIRONMENT IN WHICH LOCATED
4. CLIPS OMITTED FOR CLARITY, FIXED WITH TWO 10-16x64mm C4 FLAT HEAD T17 SCREWS PENETRATING THROUGH BATTENS MIN. 30mm INTO PRIMARY STRUCTURE
5. HIGH TO EXTRA HIGH WIND ZONES DOUBLE FIX UNDERFLASHING

## TWO PIECE FLASHING OPTION



## GENERAL NOTES:

- These details are to be read with Roofing Industries SPANLOK™ Product Technical Statement and installation guide.
- These details are generally in compliance with E2/AS1 and/or the NZ Metal Roof & Wall Cladding Code of Practice and in some cases specific details by 'Roofing Industries'.
- The building designer is ultimately responsible to ensure that details used meet the requirements of the NZ Building Code for the specific project.
- Details of the supporting structure including cavity battens are indicative only and are the responsibility of the building designer. For steel framed buildings thermal break cavity battens may be required.
- Roof/wall underlay selection are the responsibility of the designer. Underlay to be installed in accordance with underlay manufacturer's recommendations and requirements.
- These details are for Roofing Industries profile/s as nominated and may not be applicable to other profiles.
- This drawing is the copyright of 'Roofing Industries' and can only be copied or reproduced with their permission.
- Further information can be obtained from the NZ Metal Roof & Wall Cladding Code of Practice: [www.metalroofing.org.nz](http://www.metalroofing.org.nz) or E2/AS1.
- Details are for steel based materials, other substrates may require some changes.
- All dimensions are nominal.

Copyright detail © 2024

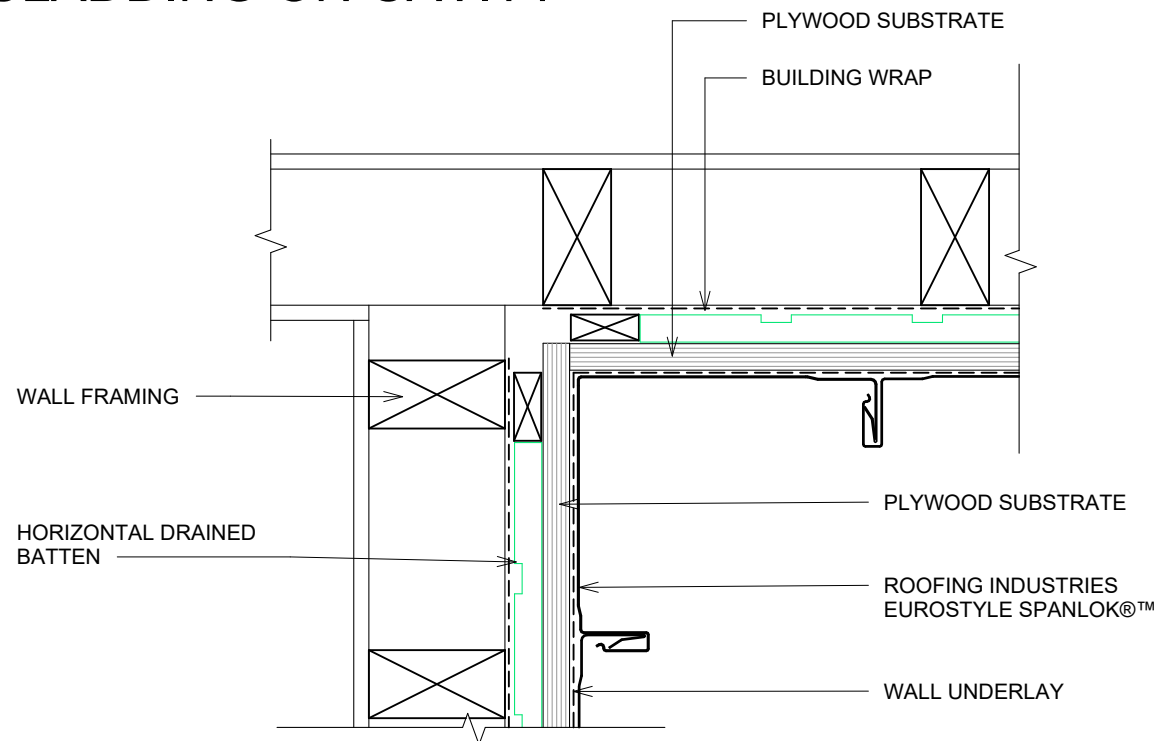


# EUROSTYLE SPANLOK® VARIABLE PAN(VP) WALL CLADDING ON PLYWOOD SUBSTRATE WALL CLADDING INTERNAL CORNER FOR VERTICAL CLADDING ON CAVITY

Detail Number: RI-ESRWVP-040A

Date drawn: 03/04/2025

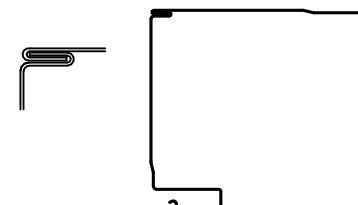
Scale: 1 : 5@ A4



## DETAIL ANNOTATION:

1. TREATED TIMBER CAVITY BATTENS CONTAINING CORROSIVE TREATMENTS MUST BE SEPARATED FROM METAL CLADDING CASTELLATED BATTEN OR APPROVED DRAINED BATTEN CAN BE USED WITH THIS SYSTEM
2. FASTENERS TO BE COMPATIBLE WITH MATERIAL BEING FIXED AND THE SUITABLE GRADE FOR THE ENVIRONMENT IN WHICH LOCATED
3. CLIPS OMITTED FOR CLARITY
4. HIGH TO EXTRA HIGH WIND ZONES DOUBLE FIX UNDERFLASHING

## TWO PIECE FLASHING OPTION



## GENERAL NOTES:

- These details are to be read with Roofing Industries SPANLOK™ Product Technical Statement and installation guide.
- These details are generally in compliance with E2/AS1 and/or the NZ Metal Roof & Wall Cladding Code of Practice and in some cases specific details by 'Roofing Industries'.
- The building designer is ultimately responsible to ensure that details used meet the requirements of the NZ Building Code for the specific project.
- Details of the supporting structure including cavity battens are indicative only and are the responsibility of the building designer. For steel framed buildings thermal break cavity battens may be required.
- Roof/wall underlay selection are the responsibility of the designer. Underlay to be installed in accordance with underlay manufacturer's recommendations and requirements.
- These details are for Roofing Industries profile/s as nominated and may not be applicable to other profiles.
- This drawing is the copyright of 'Roofing Industries' and can only be copied or reproduced with their permission.
- Further information can be obtained from the NZ Metal Roof & Wall Cladding Code of Practice: [www.metalroofing.org.nz](http://www.metalroofing.org.nz) or E2/AS1.
- Details are for steel based materials, other substrates may require some changes.
- All dimensions are nominal.

Copyright detail © 2024

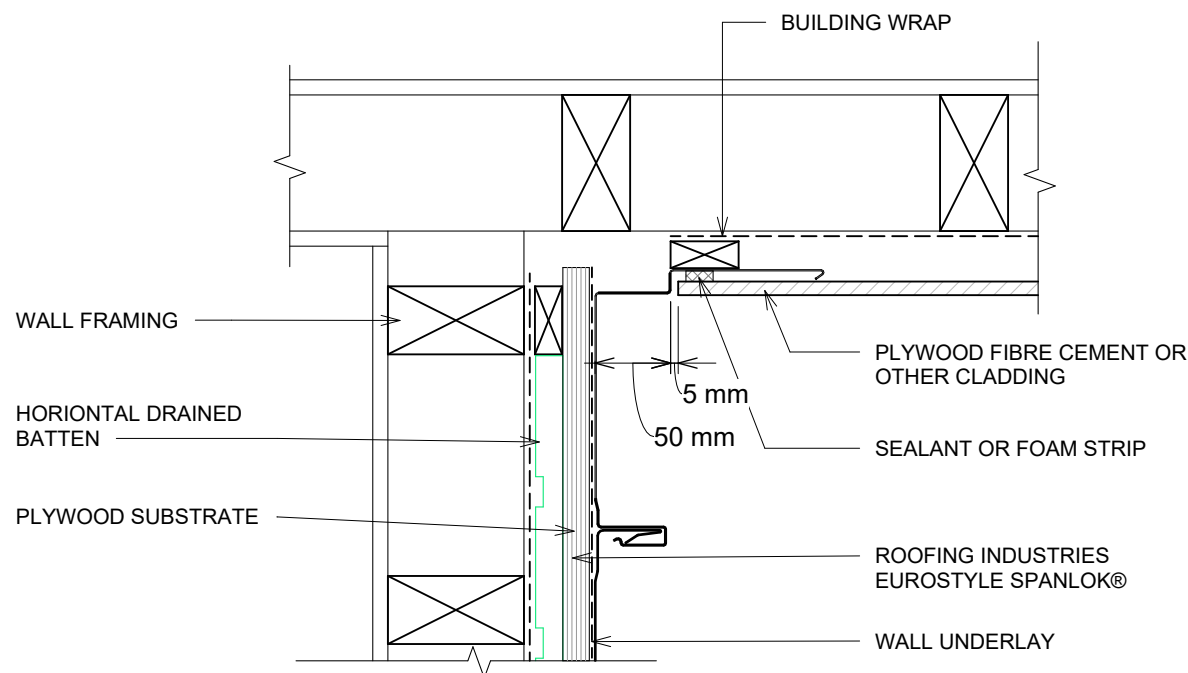


# EUROSTYLE SPANLOK® VARIABLE PAN(VP) WALL CLADDING ON PLYWOOD SUBSTRATE INTERNAL CORNER FOR VERTICAL CLADDING ON CAVITY WITH CLADDING CHANGE

Detail Number: RI-ESRWVP-040B

Date drawn: 03/04/2025

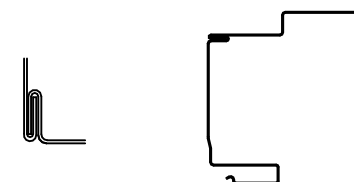
Scale: 1 : 5@ A4



## DETAIL ANNOTATION:

1. TREATED TIMBER CAVITY BATTENS CONTAINING CORROSIVE TREATMENTS MUST BE SEPARATED FROM METAL CLADDING
2. CASTELLATED BATTEN OR APPROVED DRAINED BATTEN CAN BE USED WITH THIS SYSTEM
3. FASTENERS TO BE COMPATIBLE WITH MATERIAL BEING FIXED AND THE SUITABLE GRADE FOR THE ENVIRONMENT IN WHICH LOCATED
4. CLIPS OMITTED FOR CLARITY
5. HIGH TO EXTRA HIGH WIND ZONES DOUBLE FIX UNDERFLASHING

## TWO PIECE FLASHING OPTION



## GENERAL NOTES:

- These details are to be read with Roofing Industries SPANLOK™ Product Technical Statement and installation guide.
- These details are generally in compliance with E2/AS1 and/or the NZ Metal Roof & Wall Cladding Code of Practice and in some cases specific details by 'Roofing Industries'.
- The building designer is ultimately responsible to ensure that details used meet the requirements of the NZ Building Code for the specific project.
- Details of the supporting structure including cavity battens are indicative only and are the responsibility of the building designer. For steel framed buildings thermal break cavity battens may be required.
- Roof/wall underlay selection are the responsibility of the designer. Underlay to be installed in accordance with underlay manufacturer's recommendations and requirements.
- These details are for Roofing Industries profile/s as nominated and may not be applicable to other profiles.
- This drawing is the copyright of 'Roofing Industries' and can only be copied or reproduced with their permission.
- Further information can be obtained from the NZ Metal Roof & Wall Cladding Code of Practice: [www.metalroofing.org.nz](http://www.metalroofing.org.nz) or E2/AS1.
- Details are for steel based materials, other substrates may require some changes.
- All dimensions are nominal.

Copyright detail © 2024



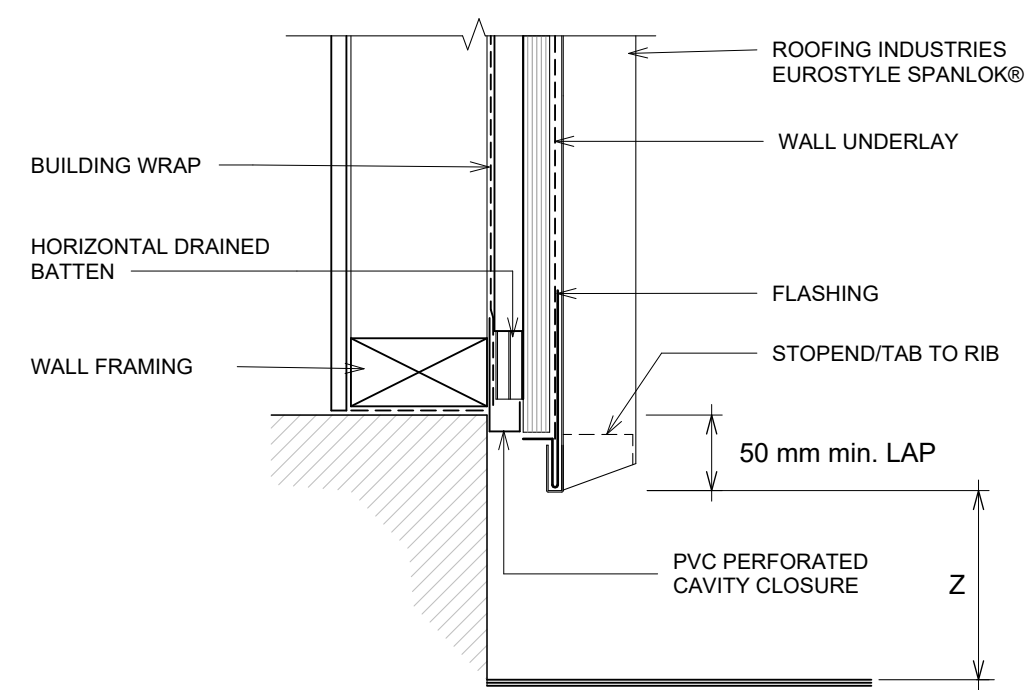


# EUROSTYLE SPANLOK® VARIABLE PAN(VP) WALL CLADDING ON PLYWOOD SUBSTRATE WALL CLADDING BASE OF VERTICAL CLADDING ON CAVITY

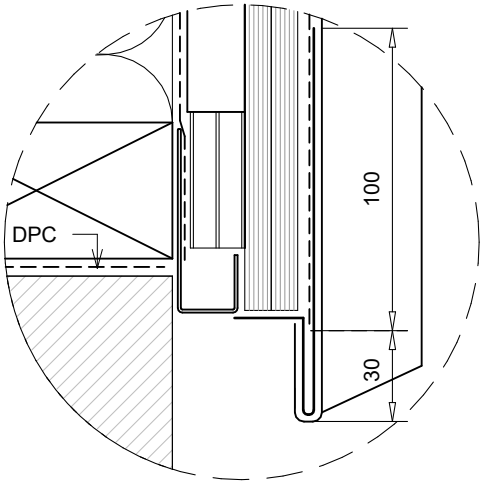
Detail Number: RI-ESRWVP-050

Date drawn: 03/04/2025

Scale: 1 : 5@ A4



- DETAIL ANNOTATION:
1. THE BOTTOM EDGE OF THE CLADDING SHALL OVERLAP THE FOUNDATION WALL
  2. TREATED TIMBER CAVITY BATTENS CONTAINING CORROSIVE TREATMENTS MUST BE SEPARATED FROM METAL CLADDING
  3. CASTELLATED BATTEN OR APPROVED DRAINED BATTEN CAN BE USED WITH THIS SYSTEM
  4. FASTENERS TO BE COMPATIBLE WITH MATERIAL BEING FIXED AND THE SUITABLE GRADE FOR THE ENVIRONMENT IN WHICH LOCATED
  5. CLIPS OMITTED FOR CLARITY



SET DOWN	MINIMUM
	Z
PAVED SURFACE	100mm
UNPAVED SURFACE	175mm

## GENERAL NOTES:

- These details are to be read with Roofing Industries SPANLOK™ Product Technical Statement and installation guide.
- These details are generally in compliance with E2/AS1 and/or the NZ Metal Roof & Wall Cladding Code of Practice and in some cases specific details by 'Roofing Industries'.
- The building designer is ultimatley responsible to ensure that details used meet the requirements of the NZ Building Code for the specific project.
- Details of the supporting structure including cavity battens are indicative only and are the responsibility of the building designer. For steel framed buildings thermal break cavity battens may be required.
- Roof/wall underlay selection are the responsibility of the designer. Underlay to be installed in accordance with underlay manufacturer's recommendations and requirements.
- These details are for Roofing Industries profile/s as nominated and may not be applicable to other profiles.
- This drawing is the copyright of 'Roofing Industries' and can only be copied or reproduced with their permission.
- Further information can be obtained from the NZ Metal Roof & Wall Cladding Code of Practice: [www.metalroofing.org.nz](http://www.metalroofing.org.nz) or E2/AS1.
- Details are for steel based materials, other substrates may require some changes.
- All dimensions are nominal.

Copyright detail © 2024



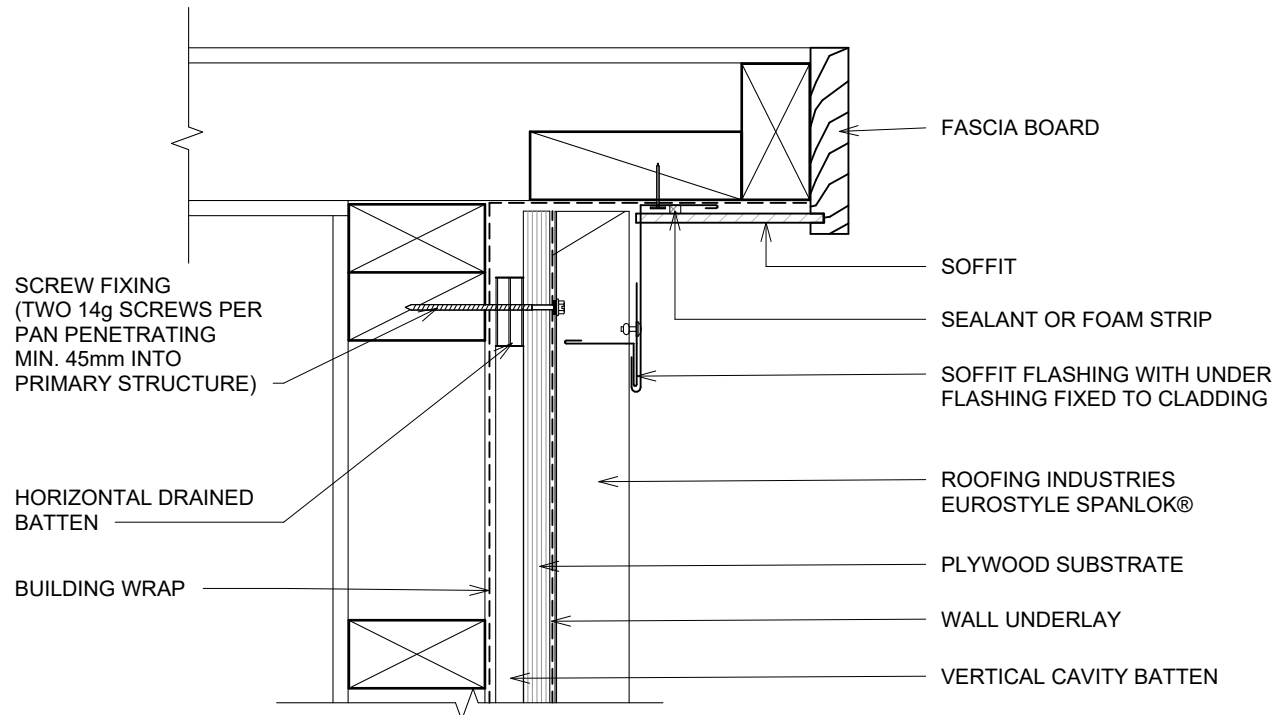


# EUROSTYLE SPANLOK® VARIABLE PAN(VP) WALL CLADDING ON PLYWOOD SUBSTRATE SOFFIT FLASHING FOR VERTICAL CLADDING

Detail Number: RI-ESRWVP-060

Date drawn: 03/04/2025

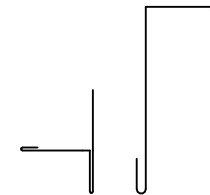
Scale: 1 : 5@ A4



## DETAIL ANNOTATION:

1. TREATED TIMBER CAVITY BATTENS CONTAINING CORROSIVE TREATMENTS MUST BE SEPARATED FROM METAL CLADDING
2. CASTELLATED BATTEN OR APPROVED DRAINED BATTEN CAN BE USED WITH THIS SYSTEM
3. HIGH TO EXTRA HIGH WIND ZONES DOUBLE FIX UNDERFLASHING
4. FASTENERS TO BE COMPATIBLE WITH MATERIAL BEING FIXED AND THE SUITABLE GRADE FOR THE ENVIRONMENT IN WHICH LOCATED
5. CLIPS OMITTED FOR CLARITY. SPANLOK CLIPS FIXED WITH TWO 10-16x64mm CL4 FLAT HEAD T17 SCREWS PENETRATING THROUGH BATTENS MIN 30mm INTO PRIMARY STRUCTURE

## TWO PIECE FLASHING OPTION



## GENERAL NOTES:

- These details are to be read with Roofing Industries SPANLOK™ Product Technical Statement and installation guide.
- These details are generally in compliance with E2/AS1 and/or the NZ Metal Roof & Wall Cladding Code of Practice and in some cases specific details by 'Roofing Industries'.
- The building designer is ultimately responsible to ensure that details used meet the requirements of the NZ Building Code for the specific project.
- Details of the supporting structure including cavity battens are indicative only and are the responsibility of the building designer. For steel framed buildings thermal break cavity battens may be required.
- Roof/wall underlay selection are the responsibility of the designer. Underlay to be installed in accordance with underlay manufacturer's recommendations and requirements.
- These details are for Roofing Industries profile/s as nominated and may not be applicable to other profiles.
- This drawing is the copyright of 'Roofing Industries' and can only be copied or reproduced with their permission.
- Further information can be obtained from the NZ Metal Roof & Wall Cladding Code of Practice: [www.metalroofing.org.nz](http://www.metalroofing.org.nz) or E2/AS1.
- Details are for steel based materials, other substrates may require some changes.
- All dimensions are nominal.

Copyright detail © 2024

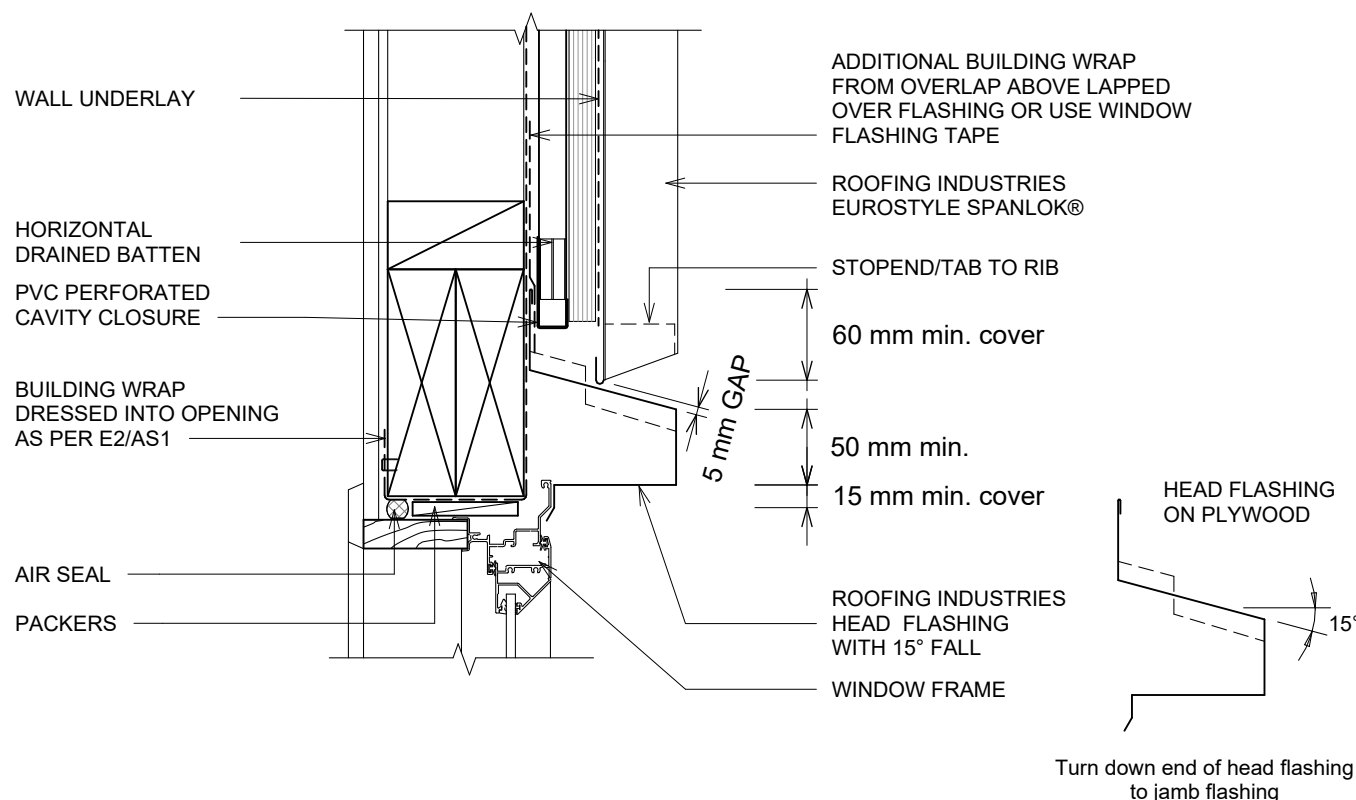


# EUROSTYLE SPANLOK® VARIABLE PAN(VP) WALL CLADDING ON PLYWOOD SUBSTRATE WINDOW / DOOR HEAD FLASHING FOR VERTICAL CLADDING (RECESSED WINDOW/DOOR OPTION 1)

Detail Number: RI-ESRWVP-120

Date drawn: 03/04/2025

Scale: 1 : 5@ A4



## DETAIL ANNOTATION:

1. REFER TO E2/AS1 FOR GENERAL WINDOW OPENING FOR WRAPPING OF FRAMED OPENING PRIOR TO WINDOW INSTALLATION.
2. WINDOW PROFILE TO BE SELECTED TO ACHIEVE COVER SHOWN IN DETAILS.
3. ARCHITRAVE'S ARE SHOWN FOR CONSISTENCY ONLY, DETAIL MAY BE USED WITH REBATED LINER.
4. WHERE SUPPORT BRACKETS REQUIRED BY THE WINDOW MANUFACTURER TO CARRY THE FRAME AND GLAZING LOADS THEY MUST BE SUPPLIED AS AN INTEGRAL PART OF THE WINDOW MANUFACTURER'S RECOMMENDATIONS.
5. LIAISE WITH WINDOW MANUFACTURER PRIOR TO INSTALLATION
6. SEAL HEAD FLASHING TO WINDOW IN VERY HIGH & EXTRA HIGH WIND ZONES
7. TREATED TIMBER CAVITY BATTENS CONTAINING CORROSIVE TREATMENTS MUST BE SEPARATED FROM METAL CLADDING CASTELLATED BATTEN OR APPROVED DRAINED BATTEN CAN BE USED WITH THIS SYSTEM
8. FASTENERS TO BE COMPATIBLE WITH MATERIAL BEING FIXED AND THE SUITABLE GRADE FOR THE ENVIRONMENT IN WHICH LOCATED
9. ALTERNATIVELY REFER TO E2/AS1 FOR FLASHING COVER GUIDANCE
10. CLIPS OMITTED FOR CLARITY
11. HIGH TO EXTRA HIGH WIND ZONES DOUBLE FIX UNDERFLASHING
12. JOINERY AND JOINERY FLASHING INTERFACE IS INDICATIVE ONLY. REFER TO SELECTED JOINERY MANUFACTURER'S RECOMMENDATIONS AND DETAILS

## GENERAL NOTES:

- These details are to be read with Roofing Industries SPANLOK™ Product Technical Statement and installation guide.
- These details are generally in compliance with E2/AS1 and/or the NZ Metal Roof & Wall Cladding Code of Practice and in some cases specific details by 'Roofing Industries'.
- The building designer is ultimately responsible to ensure that details used meet the requirements of the NZ Building Code for the specific project.
- Details of the supporting structure including cavity battens are indicative only and are the responsibility of the building designer. For steel framed buildings thermal break cavity battens may be required.
- Roof/wall underlay selection are the responsibility of the designer. Underlay to be installed in accordance with underlay manufacturer's recommendations and requirements.
- These details are for Roofing Industries profile/s as nominated and may not be applicable to other profiles.
- This drawing is the copyright of 'Roofing Industries' and can only be copied or reproduced with their permission.
- Further information can be obtained from the NZ Metal Roof & Wall Cladding Code of Practice: [www.metalroofing.org.nz](http://www.metalroofing.org.nz) or E2/AS1.
- Details are for steel based materials, other substrates may require some changes.
- All dimensions are nominal.



Copyright detail © 2024

<http://wksp.nz/ri-esl-bar>



Get **WORKINGSPEC** from  
Apple App Store/Google Play



# EUROSTYLE SPANLOK® VARIABLE PAN(VP) WALL CLADDING ON PLYWOOD SUBSTRATE JAMB FLASHING FOR VERTICAL CLADDING (RECESSED WINDOW/DOOR OPTION 1)

Detail Number: RI-ESRWVP-120B

Date drawn: 03/04/2025

Scale: 1 : 5@ A4

BUILDING WRAP

ROOFING INDUSTRIES BACK  
TRAY\* FLASHING RUN FROM  
TOP OF HEAD FLASHING TO  
GROUND OR EXIT POINT

HORIZONTAL DRAINED  
CAVITY BATTEN

WALL UNDERLAY

ROOFING INDUSTRIES  
EUROSTYLE SPANLOK®

GRAB FLASHING RIVET FIXED TO PAN

ROOFING INDUSTRIES JAMB  
FLASHING WITH RETURN FOLD

AIR SEAL

PACKERS

ALUMINIUM WINDOW

CONTINUOUS SEAL

SILL FLASHING

JAMB FLASHING  
ON PLYWOOD

\* Back tray size may require to  
increase to ensure coverage at ends  
of head flashings. Turn down end of  
head flashing

## DETAIL ANNOTATION:

1. REFER TO E2/AS1 FOR GENERAL WINDOW OPENING FOR WRAPPING OF FRAMED OPENING PRIOR TO WINDOW INSTALLATION.
2. WINDOW PROFILE TO BE SELECTED TO ACHIEVE COVER SHOWN IN DETAILS.
3. ARCHITRAVE'S ARE SHOWN FOR CONSISTENCY ONLY, DETAIL MAY BE USED WITH REBATED LINER.
4. WHERE SUPPORT BRACKETS REQUIRED BY THE WINDOW MANUFACTURER TO CARRY THE FRAME AND GLAZING LOADS THEY MUST BE SUPPLIED AS AN INTEGRAL PART OF THE WINDOW MANUFACTURER'S RECOMMENDATIONS.
5. LIAISE WITH WINDOW MANUFACTURER PRIOR TO INSTALLATION
6. SEAL HEAD FLASHING TO WINDOW IN VERY HIGH & EXTRA HIGH WIND ZONES
7. TREATED TIMBER CAVITY BATTENS CONTAINING CORROSIVE TREATMENTS MUST BE SEPARATED FROM METAL CLADDING
8. CASTELLATED BATTEN OR APPROVED DRAINED BATTEN CAN BE USED WITH THIS SYSTEM
9. FASTENERS TO BE COMPATIBLE WITH MATERIAL BEING FIXED AND THE SUITABLE GRADE FOR THE ENVIRONMENT IN WHICH LOCATED
10. ALTERNATIVELY REFER TO E2/AS1 FOR FLASHING COVER GUIDANCE
11. CLIPS OMITTED FOR CLARITY
12. HIGH TO EXTRA HIGH WIND ZONES DOUBLE FIX UNDERFLASHING JOINERY AND JOINERY FLASHING INTERFACE IS INDICATIVE ONLY.
13. REFER TO SELECTED JOINERY MANUFACTURER'S RECOMMENDATIONS AND DETAILS

## GENERAL NOTES:

- These details are to be read with Roofing Industries SPANLOK™ Product Technical Statement and installation guide.
- These details are generally in compliance with E2/AS1 and/or the NZ Metal Roof & Wall Cladding Code of Practice and in some cases specific details by 'Roofing Industries'.
- The building designer is ultimately responsible to ensure that details used meet the requirements of the NZ Building Code for the specific project.
- Details of the supporting structure including cavity battens are indicative only and are the responsibility of the building designer. For steel framed buildings thermal break cavity battens may be required.
- Roof/wall underlay selection are the responsibility of the designer. Underlay to be installed in accordance with underlay manufacturer's recommendations and requirements.
- These details are for Roofing Industries profile/s as nominated and may not be applicable to other profiles.
- This drawing is the copyright of 'Roofing Industries' and can only be copied or reproduced with their permission.
- Further information can be obtained from the NZ Metal Roof & Wall Cladding Code of Practice: [www.metalroofing.org.nz](http://www.metalroofing.org.nz) or E2/AS1.
- Details are for steel based materials, other substrates may require some changes.
- All dimensions are nominal.

 interactive assembly  
instructions available

Copyright detail © 2024

<http://wksp.nz/ri-esl-bar>



Get **WORKINGSPEC** from  
Apple App Store/Google Play

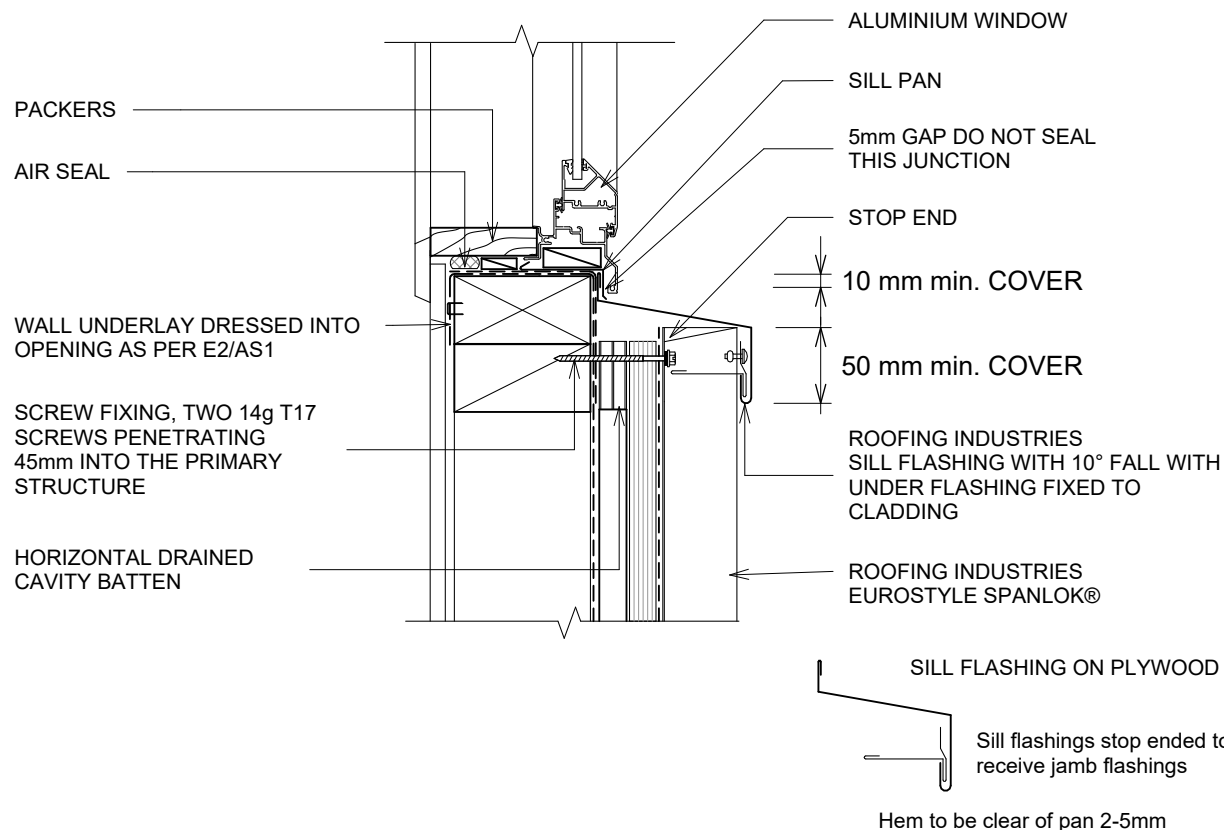


# EUROSTYLE SPANLOK® VARIABLE PAN(VP) WALL CLADDING ON PLYWOOD SUBSTRATE SILL FLASHING FOR VERTICAL CLADDING (RECESSED WINDOW/DOOR OPTION 1)

Detail Number: RI-ESRWVP-120C

Date drawn: 03/04/2025

Scale: 1 : 5@ A4



## DETAIL ANNOTATION:

1. REFER TO E2/AS1 FOR GENERAL WINDOW OPENING FOR WRAPPING OF FRAMED OPENING PRIOR TO WINDOW INSTALLATION.
2. WINDOW PROFILE TO BE SELECTED TO ACHIEVE COVER SHOWN IN DETAILS.
3. ARCHITRAVE'S ARE SHOWN FOR CONSISTENCY ONLY, DETAIL MAY BE USED WITH REBATED LINER.
4. WHERE SUPPORT BRACKETS REQUIRED BY THE WINDOW MANUFACTURER TO CARRY THE FRAME AND GLAZING LOADS THEY MUST BE SUPPLIED AS AN INTEGRAL PART OF THE WINDOW MANUFACTURER'S RECOMMENDATIONS.
5. LIAISE WITH WINDOW MANUFACTURER PRIOR TO INSTALLATION
6. SEAL HEAD FLASHING TO WINDOW IN VERY HIGH & EXTRA HIGH WIND ZONES
7. TREATED TIMBER CAVITY BATTENS CONTAINING CORROSIVE TREATMENTS MUST BE SEPARATED FROM METAL CLADDING
8. CASTELLATED BATTEN OR APPROVED DRAINED BATTEN CAN BE USED WITH THIS SYSTEM
9. FASTENERS TO BE COMPATIBLE WITH MATERIAL BEING FIXED AND THE SUITABLE GRADE FOR THE ENVIRONMENT IN WHICH LOCATED
10. ALTERNATIVELY REFER TO E2/AS1 FOR FLASHING COVER GUIDANCE
11. CLIPS OMITTED FOR CLARITY
12. HIGH TO EXTRA HIGH WIND ZONES DOUBLE FIX UNDERFLASHING JOINERY AND JOINERY FLASHING INTERFACE IS INDICATIVE ONLY.
13. REFER TO SELECTED JOINERY MANUFACTURER'S RECOMMENDATIONS AND DETAILS

## GENERAL NOTES:

- These details are to be read with Roofing Industries SPANLOK™ Product Technical Statement and installation guide.
- These details are generally in compliance with E2/AS1 and/or the NZ Metal Roof & Wall Cladding Code of Practice and in some cases specific details by 'Roofing Industries'.
- The building designer is ultimately responsible to ensure that details used meet the requirements of the NZ Building Code for the specific project.
- Details of the supporting structure including cavity battens are indicative only and are the responsibility of the building designer. For steel framed buildings thermal break cavity battens may be required.
- Roof/wall underlay selection are the responsibility of the designer. Underlay to be installed in accordance with underlay manufacturer's recommendations and requirements.
- These details are for Roofing Industries profile/s as nominated and may not be applicable to other profiles.
- This drawing is the copyright of 'Roofing Industries' and can only be copied or reproduced with their permission.
- Further information can be obtained from the NZ Metal Roof & Wall Cladding Code of Practice: [www.metalroofing.org.nz](http://www.metalroofing.org.nz) or E2/AS1.
- Details are for steel based materials, other substrates may require some changes.
- All dimensions are nominal.



interactive assembly  
instructions available

Copyright detail © 2024

<http://wksp.nz/ri-esl-bar>



Get **WORKINGSPEC** from  
Apple App Store/Google Play

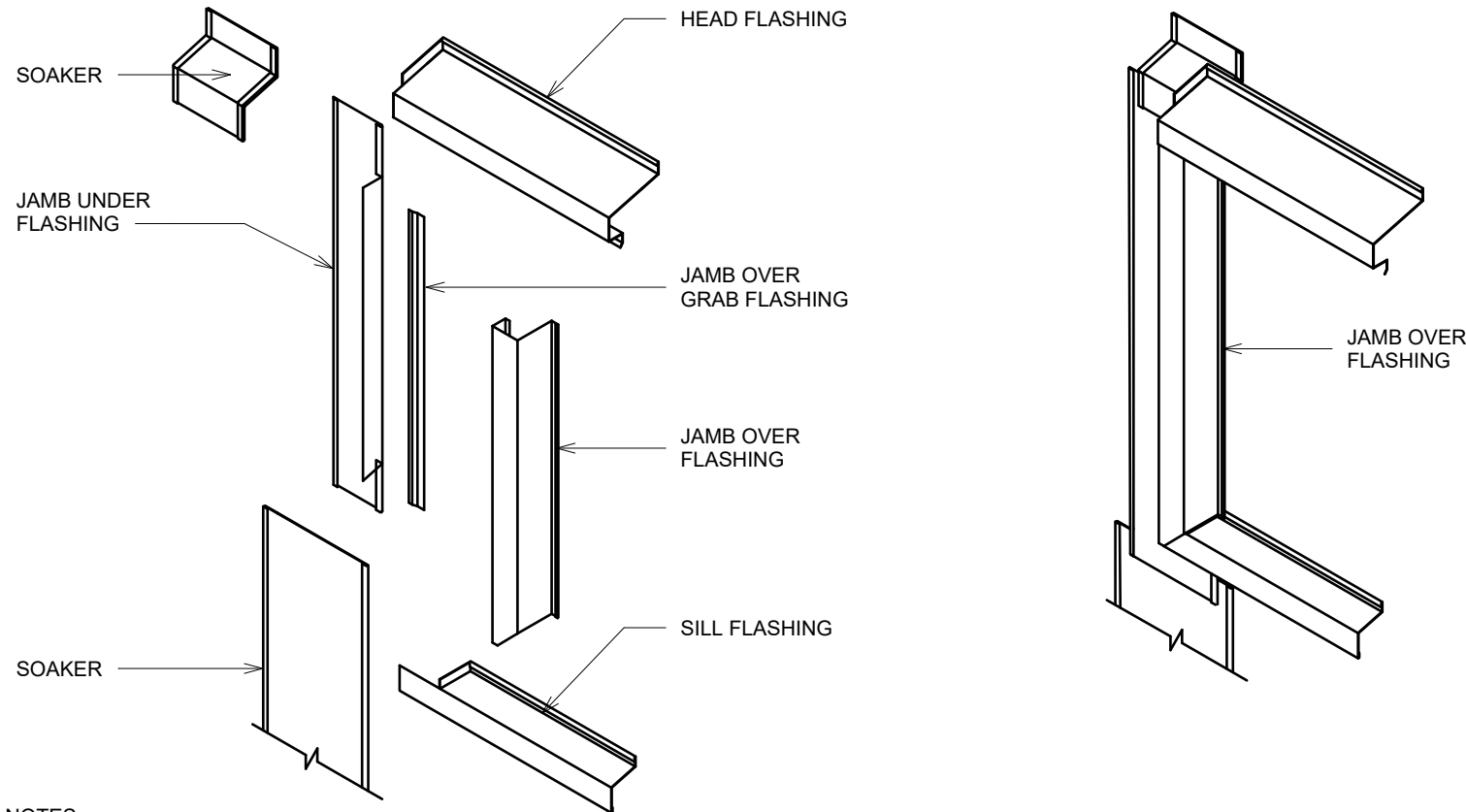


# EUROSTYLE SPANLOK® VARIABLE PAN(VP) WALL CLADDING ON PLYWOOD SUBSTRATE ISOMETRIC FLASHING LAYOUT FOR VERTICAL CLADDING (RECESSED WINDOW/DOOR OPTION 1)

Detail Number: RI-ESRWVP-120D

Date drawn: 03/04/2025

Scale: 1 : 5@ A4



## GENERAL NOTES:

- These details are to be read with Roofing Industries SPANLOK™ Product Technical Statement and installation guide.
- These details are generally in compliance with E2/AS1 and/or the NZ Metal Roof & Wall Cladding Code of Practice and in some cases specific details by 'Roofing Industries'.
- The building designer is ultimately responsible to ensure that details used meet the requirements of the NZ Building Code for the specific project.
- Details of the supporting structure including cavity battens are indicative only and are the responsibility of the building designer. For steel framed buildings thermal break cavity battens may be required.
- Roof/wall underlay selection are the responsibility of the designer. Underlay to be installed in accordance with underlay manufacturer's recommendations and requirements.
- These details are for Roofing Industries profile/s as nominated and may not be applicable to other profiles.
- This drawing is the copyright of 'Roofing Industries' and can only be copied or reproduced with their permission.
- Further information can be obtained from the NZ Metal Roof & Wall Cladding Code of Practice: [www.metalroofing.org.nz](http://www.metalroofing.org.nz) or E2/AS1.
- Details are for steel based materials, other substrates may require some changes.
- All dimensions are nominal.

Copyright detail © 2024



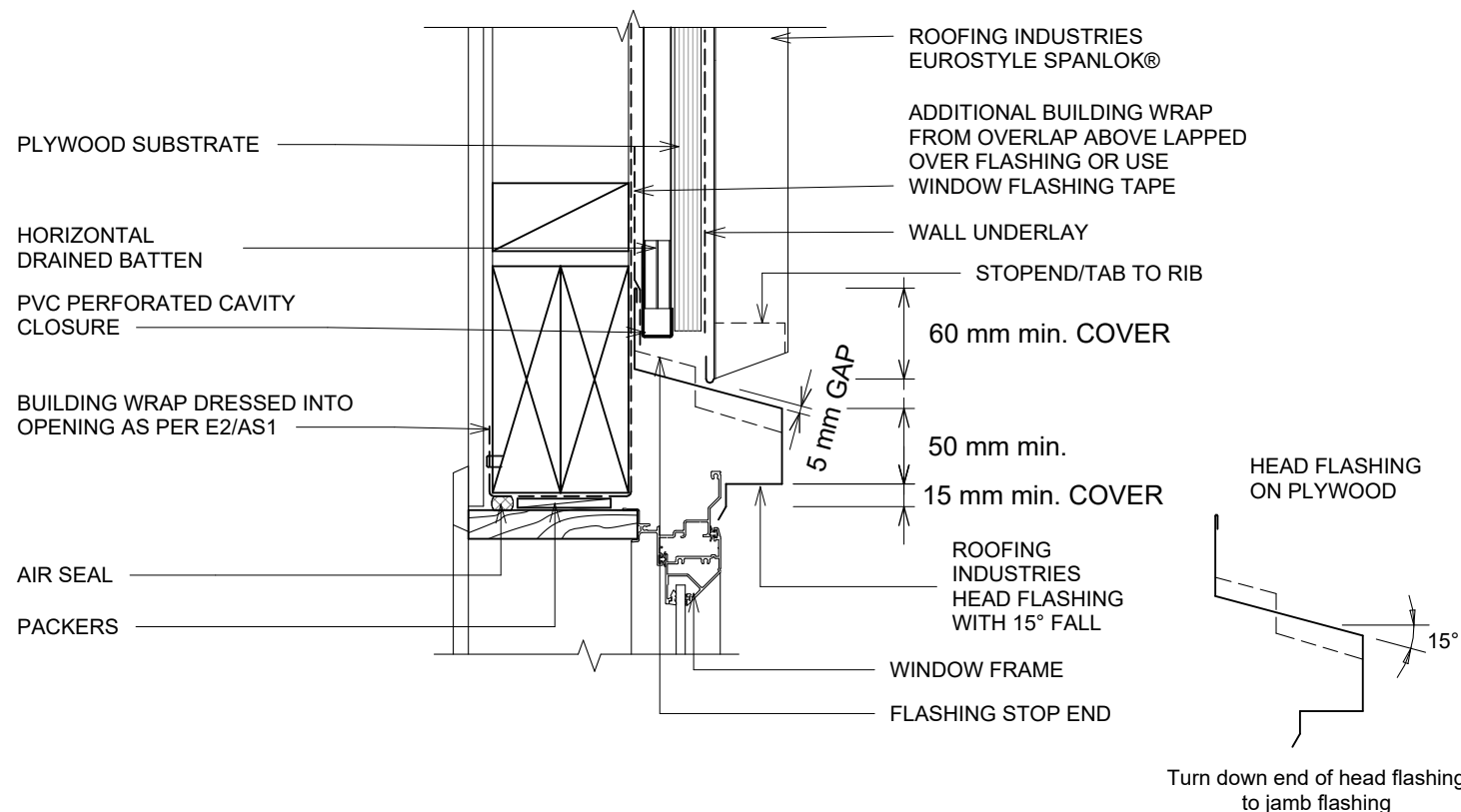


# EUROSTYLE SPANLOK® VARIABLE PAN(VP) WALL CLADDING ON PLYWOOD SUBSTRATE WINDOW / DOOR HEAD FLASHING FOR VERTICAL CLADDING (RECESSED WINDOW/DOOR OPTION 2)

Detail Number: RI-ESRWVP-130A

Date drawn: 03/04/2025

Scale: 1 : 5@ A4



## DETAIL ANNOTATION:

1. REFER TO E2/AS1 FOR GENERAL WINDOW OPENING FOR WRAPPING OF FRAMED OPENING PRIOR TO WINDOW INSTALLATION.
2. WINDOW PROFILE TO BE SELECTED TO ACHIEVE COVER SHOWN IN DETAILS.
3. ARCHITRAVE'S ARE SHOWN FOR CONSISTENCY ONLY, DETAIL MAY BE USED WITH REBATED LINER.
4. WHERE SUPPORT BRACKETS REQUIRED BY THE WINDOW MANUFACTURER TO CARRY THE FRAME AND GLAZING LOADS THEY MUST BE SUPPLIED AS AN INTEGRAL PART OF THE WINDOW MANUFACTURER'S RECOMMENDATIONS.
5. LIAISE WITH WINDOW MANUFACTURER PRIOR TO INSTALLATION
6. SEAL HEAD FLASHING TO WINDOW IN VERY HIGH & EXTRA HIGH WIND ZONES
7. TREATED TIMBER CAVITY BATTENS CONTAINING CORROSIVE TREATMENTS MUST BE SEPARATED FROM METAL CLADDING
8. CASTELLATED BATTEN OR APPROVED DRAINED BATTEN CAN BE USED WITH THIS SYSTEM
9. FASTENERS TO BE COMPATIBLE WITH MATERIAL BEING FIXED AND THE SUITABLE GRADE FOR THE ENVIRONMENT IN WHICH LOCATED
10. ALTERNATIVELY REFER TO E2/AS1 FOR FLASHING COVER GUIDANCE
11. CLIPS OMITTED FOR CLARITY
12. JOINERY AND JOINERY FLASHING INTERFACE IS INDICATIVE ONLY. REFER TO SELECTED JOINERY MANUFACTURER'S RECOMMENDATIONS AND DETAILS

## GENERAL NOTES:

- These details are to be read with Roofing Industries SPANLOK™ Product Technical Statement and installation guide.
- These details are generally in compliance with E2/AS1 and/or the NZ Metal Roof & Wall Cladding Code of Practice and in some cases specific details by 'Roofing Industries'.
- The building designer is ultimately responsible to ensure that details used meet the requirements of the NZ Building Code for the specific project.
- Details of the supporting structure including cavity battens are indicative only and are the responsibility of the building designer. For steel framed buildings thermal break cavity battens may be required.
- Roof/wall underlay selection are the responsibility of the designer. Underlay to be installed in accordance with underlay manufacturer's recommendations and requirements.
- These details are for Roofing Industries profile/s as nominated and may not be applicable to other profiles.
- This drawing is the copyright of 'Roofing Industries' and can only be copied or reproduced with their permission.
- Further information can be obtained from the NZ Metal Roof & Wall Cladding Code of Practice: [www.metalroofing.org.nz](http://www.metalroofing.org.nz) or E2/AS1.
- Details are for steel based materials, other substrates may require some changes.
- All dimensions are nominal.



interactive assembly  
instructions available

Copyright detail © 2024

<http://wksp.nz/ri-esl-bar>



Get **WORKINGSPEC** from  
Apple App Store/Google Play



# EUROSTYLE SPANLOK® VARIABLE PAN(VP) WALL CLADDING ON PLYWOOD SUBSTRATE JAMB FLASHING FOR VERTICAL CLADDING (RECESSED WINDOW/DOOR OPTION 2)

Detail Number: RI-ESRWVP-130B

Date drawn: 03/04/2025

Scale: 1 : 5@ A4

BUILDING WRAP DRESSED INTO  
OPENING AS PER E2/AS1

ROOFING INDUSTRIES BACK  
TRAY\* FLASHING RUN FROM  
TOP OF HEAD FLASHING TO  
GROUND OR EXIT POINT

HORIZONTAL DRAINED  
CAVITY BATTEN

WALL UNDERLAY

ROOFING INDUSTRIES  
EUROSTYLE SPANLOK®

GRAB FLASHING RIVET FIXED TO PAN

ROOFING INDUSTRIES JAMB FLASHING WITH  
RETURN FOLD BEHIND GRAB FLASHING

JAMB FLASHING ON PLYWOOD

AIR SEAL

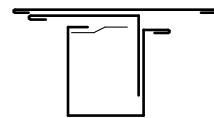
PACKERS

ALUMINIUM WINDOW

CONTINUOUS SEAL

SILL FLASHING BELOW

\* Back tray size may require to increase to ensure  
coverage at ends of head flashing. Turn down  
end of head flashing



## GENERAL NOTES:

- These details are to be read with Roofing Industries SPANLOK™ Product Technical Statement and installation guide.
- These details are generally in compliance with E2/AS1 and/or the NZ Metal Roof & Wall Cladding Code of Practice and in some cases specific details by 'Roofing Industries'.
- The building designer is ultimately responsible to ensure that details used meet the requirements of the NZ Building Code for the specific project.
- Details of the supporting structure including cavity battens are indicative only and are the responsibility of the building designer. For steel framed buildings thermal break cavity battens may be required.
- Roof/wall underlay selection are the responsibility of the designer. Underlay to be installed in accordance with underlay manufacturer's recommendations and requirements.
- These details are for Roofing Industries profile/s as nominated and may not be applicable to other profiles.
- This drawing is the copyright of 'Roofing Industries' and can only be copied or reproduced with their permission.
- Further information can be obtained from the NZ Metal Roof & Wall Cladding Code of Practice: [www.metalroofing.org.nz](http://www.metalroofing.org.nz) or E2/AS1.
- Details are for steel based materials, other substrates may require some changes.
- All dimensions are nominal.

## DETAIL ANNOTATION:

1. REFER TO E2/AS1 FOR GENERAL WINDOW OPENING FOR WRAPPING OF FRAMED OPENING PRIOR TO WINDOW INSTALLATION.
2. WINDOW PROFILE TO BE SELECTED TO ACHIEVE COVER SHOWN IN DETAILS.
3. ARCHITRAVE'S ARE SHOWN FOR CONSISTENCY ONLY, DETAIL MAY BE USED WITH REBATED LINER.
4. WHERE SUPPORT BRACKETS REQUIRED BY THE WINDOW MANUFACTURER TO CARRY THE FRAME AND GLAZING LOADS THEY MUST BE SUPPLIED AS AN INTEGRAL PART OF THE WINDOW MANUFACTURER'S RECOMMENDATIONS.
5. LIAISE WITH WINDOW MANUFACTURER PRIOR TO INSTALLATION
6. SEAL HEAD FLASHING TO WINDOW IN VERY HIGH & EXTRA HIGH WIND ZONES
7. TREATED TIMBER CAVITY BATTENS CONTAINING CORROSIVE TREATMENTS MUST BE SEPARATED FROM METAL CLADDING CASTELLATED BATTEN OR APPROVED DRAINED BATTEN CAN BE USED WITH THIS SYSTEM
8. FASTENERS TO BE COMPATIBLE WITH MATERIAL BEING FIXED AND THE SUITABLE GRADE FOR THE ENVIRONMENT IN WHICH LOCATED
9. ALTERNATIVELY REFER TO E2/AS1 FOR FLASHING COVER GUIDANCE
10. CLIPS OMITTED FOR CLARITY
11. HIGH TO EXTRA HIGH WIND ZONES DOUBLE FIX UNDERFLASHING JOINERY AND JOINERY FLASHING INTERFACE IS INDICATIVE ONLY. REFER TO SELECTED JOINERY MANUFACTURER'S RECOMMENDATIONS AND DETAILS
- 12.
- 13.



<http://wksp.nz/ri-esl-bar>



Get **WORKINGSPEC** from  
Apple App Store/Google Play

Copyright detail © 2024



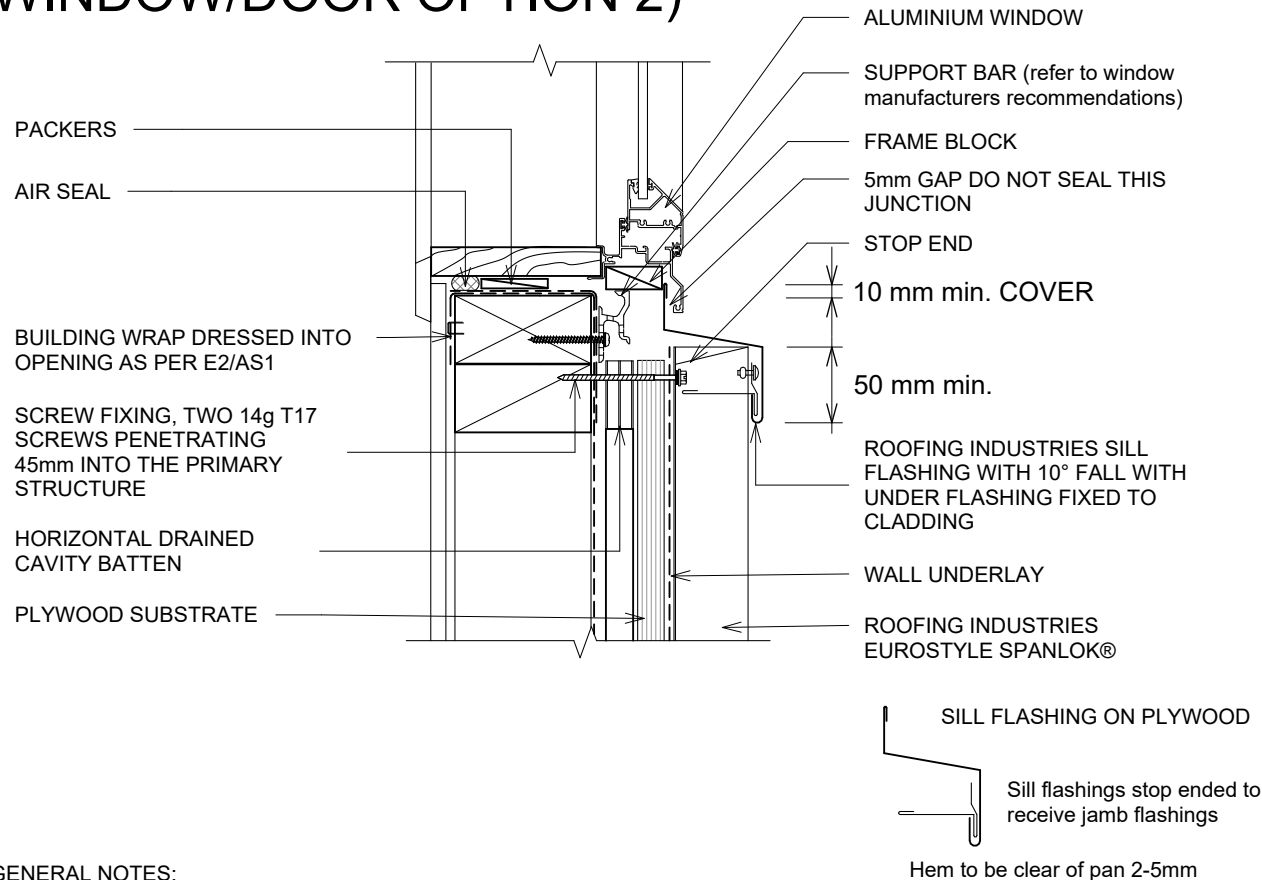


# EUROSTYLE SPANLOK® VARIABLE PAN(VP) WALL CLADDING ON PLYWOOD SUBSTRATE SILL FLASHING FOR VERTICAL CLADDING (RECESSED WINDOW/DOOR OPTION 2)

Detail Number: RI-ESRWVP-130C

Date drawn: 03/04/2025

Scale: 1 : 5@ A4



## DETAIL ANNOTATION:

1. REFER TO E2/AS1 FOR GENERAL WINDOW OPENING FOR WRAPPING OF FRAMED OPENING PRIOR TO WINDOW INSTALLATION.
2. WINDOW PROFILE TO BE SELECTED TO ACHIEVE COVER SHOWN IN DETAILS.
3. ARCHITRAVE'S ARE SHOWN FOR CONSISTENCY ONLY, DETAIL MAY BE USED WITH REBATED LINER.
4. WHERE SUPPORT BRACKETS REQUIRED BY THE WINDOW MANUFACTURER TO CARRY THE FRAME AND GLAZING LOADS THEY MUST BE SUPPLIED AS AN INTEGRAL PART OF THE WINDOW MANUFACTURER'S RECOMMENDATIONS. LIAISE WITH WINDOW MANUFACTURER PRIOR TO INSTALLATION
5. SEAL HEAD FLASHING TO WINDOW IN VERY HIGH & EXTRA HIGH WIND ZONES
6. TREATED TIMBER CAVITY BATTENS CONTAINING CORROSIVE TREATMENTS MUST BE SEPARATED FROM METAL CLADDING
7. CASTELLATED BATTEN OR APPROVED DRAINED BATTEN CAN BE USED WITH THIS SYSTEM
8. FASTENERS TO BE COMPATIBLE WITH MATERIAL BEING FIXED AND THE SUITABLE GRADE FOR THE ENVIRONMENT IN WHICH LOCATED
9. ALTERNATIVELY REFER TO E2/AS1 FOR FLASHING COVER GUIDANCE
10. CLIPS OMITTED FOR CLARITY
11. HIGH TO EXTRA HIGH WIND ZONES DOUBLE FIX UNDERFLASHING
12. JOINERY AND JOINERY FLASHING INTERFACE IS INDICATIVE ONLY. REFER TO SELECTED JOINERY MANUFACTURER'S RECOMMENDATIONS AND DETAILS

## GENERAL NOTES:

- These details are to be read with Roofing Industries SPANLOK™ Product Technical Statement and installation guide.
- These details are generally in compliance with E2/AS1 and/or the NZ Metal Roof & Wall Cladding Code of Practice and in some cases specific details by 'Roofing Industries'.
- The building designer is ultimately responsible to ensure that details used meet the requirements of the NZ Building Code for the specific project.
- Details of the supporting structure including cavity battens are indicative only and are the responsibility of the building designer. For steel framed buildings thermal break cavity battens may be required.
- Roof/wall underlay selection are the responsibility of the designer. Underlay to be installed in accordance with underlay manufacturer's recommendations and requirements.
- These details are for Roofing Industries profile/s as nominated and may not be applicable to other profiles.
- This drawing is the copyright of 'Roofing Industries' and can only be copied or reproduced with their permission.
- Further information can be obtained from the NZ Metal Roof & Wall Cladding Code of Practice: [www.metalroofing.org.nz](http://www.metalroofing.org.nz) or E2/AS1.
- Details are for steel based materials, other substrates may require some changes.
- All dimensions are nominal.



<http://wksp.nz/ri-esl-bar>



Get **WORKINGSPEC** from  
Apple App Store/Google Play

Copyright detail © 2024

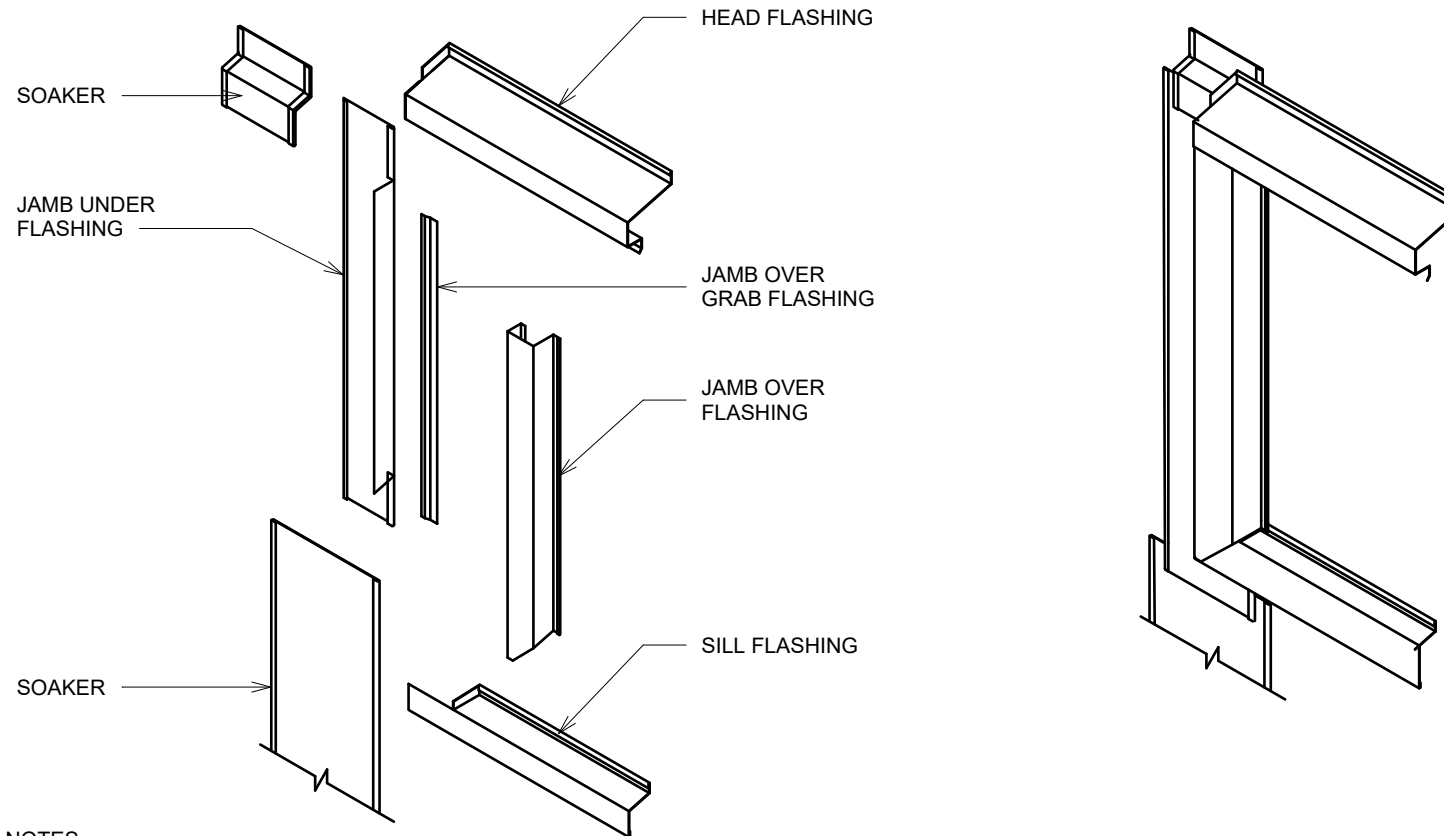


# EUROSTYLE SPANLOK® VARIABLE PAN(VP) WALL CLADDING ON PLYWOOD SUBSTRATE ISOMETRIC FLASHING LAYOUT FOR VERTICAL CLADDING (RECESSED WINDOW/DOOR OPTION 2)

Detail Number: RI-ESRWVP-130D

Date drawn: 03/04/2025

Scale: 1 : 5@ A4



## GENERAL NOTES:

- These details are to be read with Roofing Industries SPANLOK™ Product Technical Statement and installation guide.
- These details are generally in compliance with E2/AS1 and/or the NZ Metal Roof & Wall Cladding Code of Practice and in some cases specific details by 'Roofing Industries'.
- The building designer is ultimately responsible to ensure that details used meet the requirements of the NZ Building Code for the specific project.
- Details of the supporting structure including cavity battens are indicative only and are the responsibility of the building designer. For steel framed buildings thermal break cavity battens may be required.
- Roof/wall underlay selection are the responsibility of the designer. Underlay to be installed in accordance with underlay manufacturer's recommendations and requirements.
- These details are for Roofing Industries profile/s as nominated and may not be applicable to other profiles.
- This drawing is the copyright of 'Roofing Industries' and can only be copied or reproduced with their permission.
- Further information can be obtained from the NZ Metal Roof & Wall Cladding Code of Practice: [www.metalroofing.org.nz](http://www.metalroofing.org.nz) or E2/AS1.
- Details are for steel based materials, other substrates may require some changes.
- All dimensions are nominal.

Copyright detail © 2024

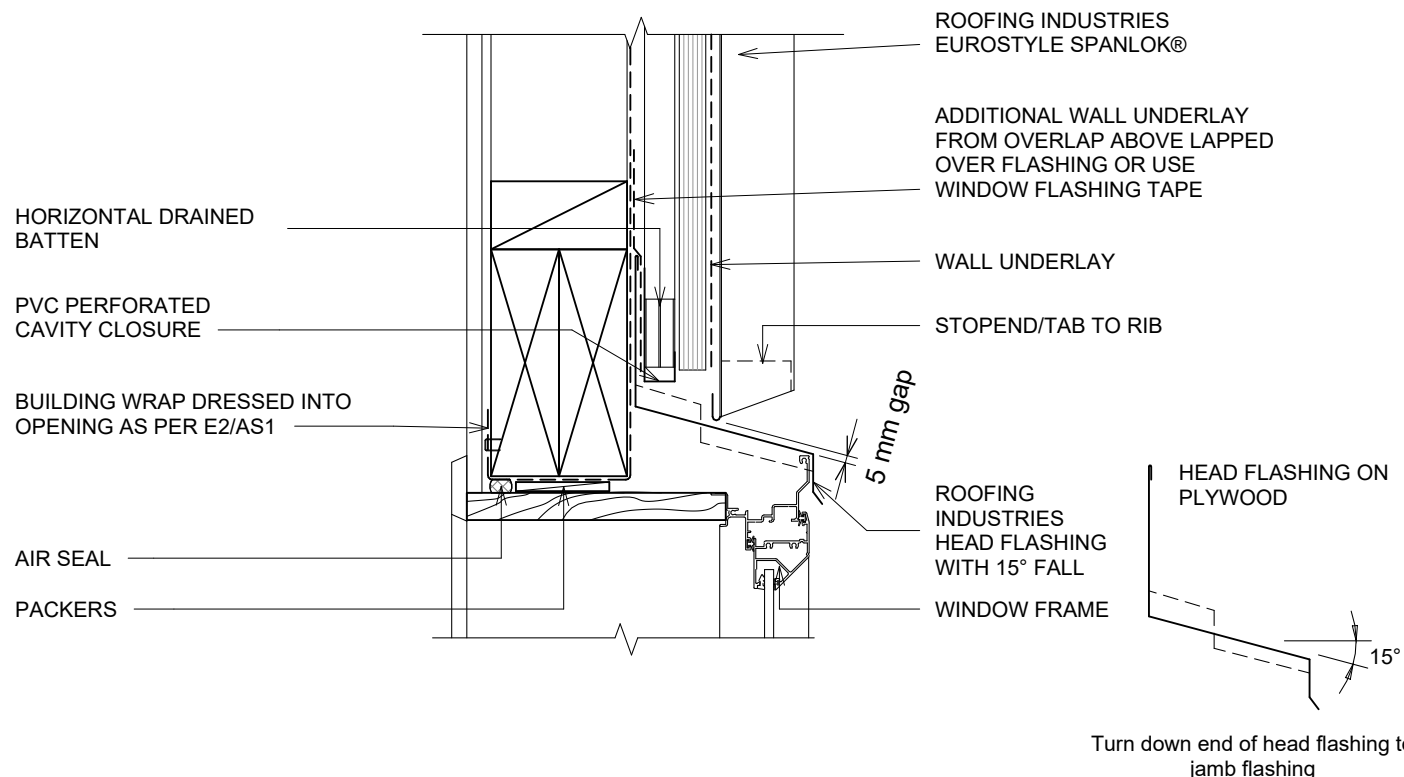


# EUROSTYLE SPANLOK® VARIABLE PAN(VP) WALL CLADDING ON PLYWOOD SUBSTRATE WINDOW / DOOR HEAD FLASHING FOR VERTICAL CLADDING (WINDOW/DOOR OPTION 3)

Detail Number: RI-ESRWVP-140A

Date drawn: 03/04/2025

Scale: 1 : 5@ A4



## DETAIL ANNOTATION:

1. REFER TO E2/AS1 FOR GENERAL WINDOW OPENING FOR WRAPPING OF FRAMED OPENING PRIOR TO WINDOW INSTALLATION.
2. WINDOW PROFILE TO BE SELECTED TO ACHIEVE COVER SHOWN IN DETAILS.
3. ARCHITRAVE'S ARE SHOWN FOR CONSISTENCY ONLY, DETAIL MAY BE USED WITH REBATED LINER.
4. WHERE SUPPORT BRACKETS REQUIRED BY THE WINDOW MANUFACTURER TO CARRY THE FRAME AND GLAZING LOADS THEY MUST BE SUPPLIED AS AN INTEGRAL PART OF THE WINDOW MANUFACTURER'S RECOMMENDATIONS.
5. LIAISE WITH WINDOW MANUFACTURER PRIOR TO INSTALLATION
6. SEAL HEAD FLASHING TO WINDOW IN VERY HIGH & EXTRA HIGH WIND ZONES
7. TREATED TIMBER CAVITY BATTENS CONTAINING CORROSIVE TREATMENTS MUST BE SEPARATED FROM METAL CLADDING
8. CASTELLATED BATTEN OR APPROVED DRAINED BATTEN CAN BE USED WITH THIS SYSTEM
9. FASTENERS TO BE COMPATIBLE WITH MATERIAL BEING FIXED AND THE SUITABLE GRADE FOR THE ENVIRONMENT IN WHICH LOCATED
10. ALTERNATIVELY REFER TO E2/AS1 FOR FLASHING COVER GUIDANCE
11. CLIPS OMITTED FOR CLARITY
12. HIGH TO EXTRA HIGH WIND ZONES DOUBLE FIX UNDERFLASHING
13. JOINERY AND JOINERY FLASHING INTERFACE IS INDICATIVE ONLY. REFER TO SELECTED JOINERY MANUFACTURER'S RECOMMENDATIONS AND DETAILS

## GENERAL NOTES:

- These details are to be read with Roofing Industries SPANLOK™ Product Technical Statement and installation guide.
- These details are generally in compliance with E2/AS1 and/or the NZ Metal Roof & Wall Cladding Code of Practice and in some cases specific details by 'Roofing Industries'.
- The building designer is ultimately responsible to ensure that details used meet the requirements of the NZ Building Code for the specific project.
- Details of the supporting structure including cavity battens are indicative only and are the responsibility of the building designer. For steel framed buildings thermal break cavity battens may be required.
- Roof/wall underlay selection are the responsibility of the designer. Underlay to be installed in accordance with underlay manufacturer's recommendations and requirements.
- These details are for Roofing Industries profile/s as nominated and may not be applicable to other profiles.
- This drawing is the copyright of 'Roofing Industries' and can only be copied or reproduced with their permission.
- Further information can be obtained from the NZ Metal Roof & Wall Cladding Code of Practice: [www.metalroofing.org.nz](http://www.metalroofing.org.nz) or E2/AS1.
- Details are for steel based materials, other substrates may require some changes.
- All dimensions are nominal.



interactive assembly  
instructions available

Copyright detail © 2024

<http://wksp.nz/ri-esl-bar>



Get **WORKINGSPEC** from  
Apple App Store/Google Play



# EUROSTYLE SPANLOK® VARIABLE PAN(VP) WALL CLADDING ON PLYWOOD SUBSTRATE JAMB FLASHING FOR VERTICAL CLADDING (WINDOW/DOOR OPTION 3)

Detail Number: RI-ESRWVP-140B

Date drawn: 03/04/2025

Scale: 1 : 5@ A4

BUILDING WRAP DRESSED INTO  
OPENING AS PER E2/AS1

ROOFING INDUSTRIES BACK  
TRAY\* FLASHING RUN FROM  
TOP OF HEAD FLASHING TO  
GROUND OR EXIT POINT

HORIZONTAL  
DRAINED CAVITY  
BATTEN

ROOFING INDUSTRIES  
EUROSTYLE SPANLOK®

GRAB FLASHING RIVET FIXED TO PAN

ROOFING INDUSTRIES JAMB  
FLASHING WITH RETURN FOLD

AIR SEAL

PACKERS

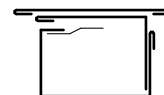
SILL FLASHING

ALUMINIUM WINDOW

CONTINUOUS SEAL

JAMB FLASHING  
ON PLYWOOD

\* Back tray size may require to increase to ensure  
coverage at ends of head flashings. Turn down end  
of head flashing



## DETAIL ANNOTATION:

1. REFER TO E2/AS1 FOR GENERAL WINDOW OPENING FOR WRAPPING OF FRAMED OPENING PRIOR TO WINDOW INSTALLATION.
2. WINDOW PROFILE TO BE SELECTED TO ACHIEVE COVER SHOWN IN DETAILS.
3. ARCHITRAVE'S ARE SHOWN FOR CONSISTENCY ONLY, DETAIL MAY BE USED WITH REBATED LINER.
4. WHERE SUPPORT BRACKETS REQUIRED BY THE WINDOW MANUFACTURER TO CARRY THE FRAME AND GLAZING LOADS THEY MUST BE SUPPLIED AS AN INTEGRAL PART OF THE WINDOW MANUFACTURER'S RECOMMENDATIONS.
5. LIAISE WITH WINDOW MANUFACTURER PRIOR TO INSTALLATION
6. SEAL HEAD FLASHING TO WINDOW IN VERY HIGH & EXTRA HIGH WIND ZONES
7. TREATED TIMBER CAVITY BATTENS CONTAINING CORROSIVE TREATMENTS MUST BE SEPARATED FROM METAL CLADDING CASTELLATED BATTEN OR APPROVED DRAINED BATTEN CAN BE USED WITH THIS SYSTEM
8. FASTENERS TO BE COMPATIBLE WITH MATERIAL BEING FIXED AND THE SUITABLE GRADE FOR THE ENVIRONMENT IN WHICH LOCATED
9. ALTERNATIVELY REFER TO E2/AS1 FOR FLASHING COVER GUIDANCE
10. CLIPS OMITTED FOR CLARITY
11. HIGH TO EXTRA HIGH WIND ZONES DOUBLE FIX UNDERFLASHING
12. JOINERY AND JOINERY FLASHING INTERFACE IS INDICATIVE ONLY. REFER TO SELECTED JOINERY MANUFACTURER'S RECOMMENDATIONS AND DETAILS

## GENERAL NOTES:

- These details are to be read with Roofing Industries SPANLOK™ Product Technical Statement and installation guide.
- These details are generally in compliance with E2/AS1 and/or the NZ Metal Roof & Wall Cladding Code of Practice and in some cases specific details by 'Roofing Industries'.
- The building designer is ultimately responsible to ensure that details used meet the requirements of the NZ Building Code for the specific project.
- Details of the supporting structure including cavity battens are indicative only and are the responsibility of the building designer. For steel framed buildings thermal break cavity battens may be required.
- Roof/wall underlay selection are the responsibility of the designer. Underlay to be installed in accordance with underlay manufacturer's recommendations and requirements.
- These details are for Roofing Industries profile/s as nominated and may not be applicable to other profiles.
- This drawing is the copyright of 'Roofing Industries' and can only be copied or reproduced with their permission.
- Further information can be obtained from the NZ Metal Roof & Wall Cladding Code of Practice: [www.metalroofing.org.nz](http://www.metalroofing.org.nz) or E2/AS1.
- Details are for steel based materials, other substrates may require some changes.
- All dimensions are nominal.



Copyright detail © 2024

<http://wksp.nz/ri-esl-bar>



Get **WORKINGSPEC** from  
Apple App Store/Google Play

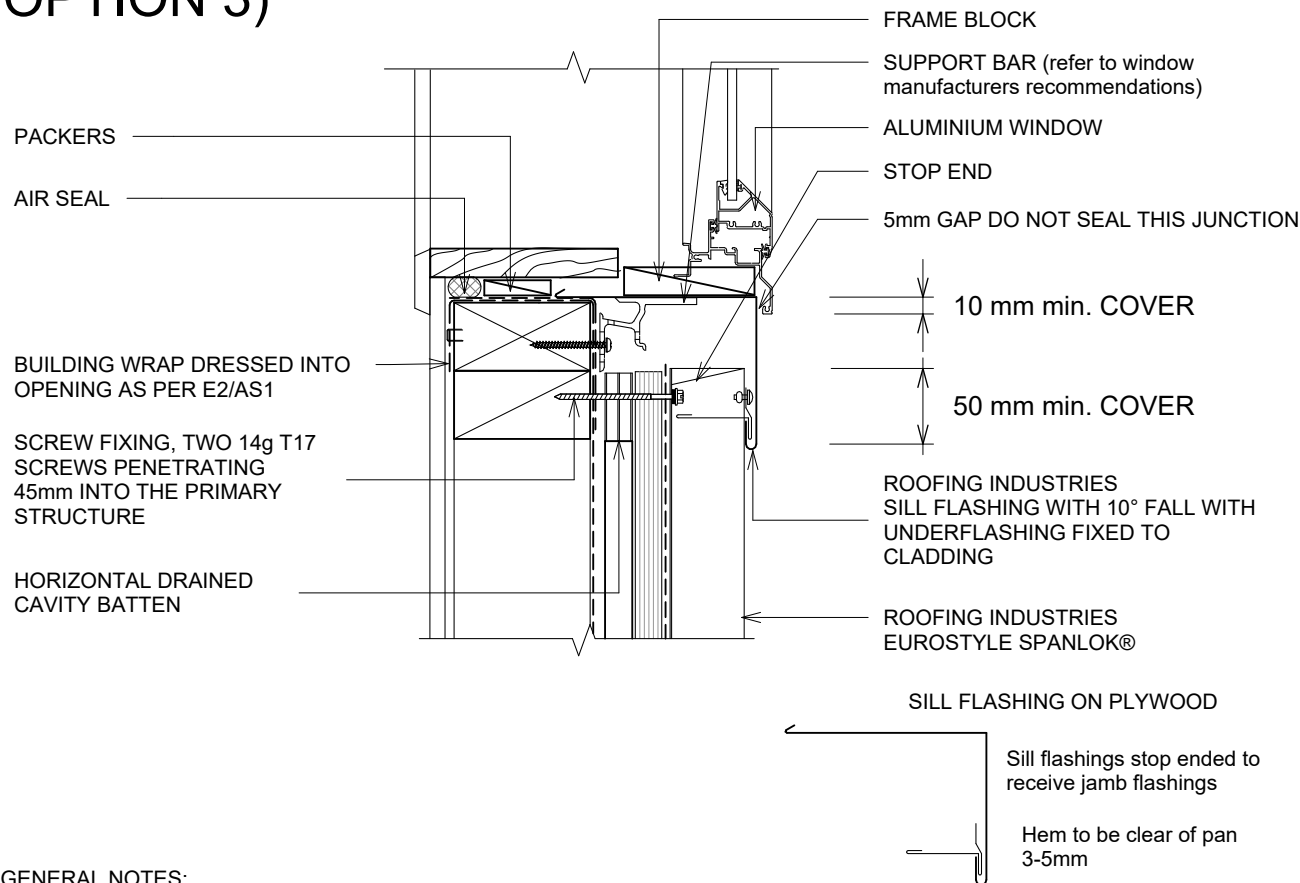


# EUROSTYLE SPANLOK® VARIABLE PAN(VP) WALL CLADDING ON PLYWOOD SUBSTRATE SILL FLASHING FOR VERTICAL CLADDING (WINDOW/DOOR OPTION 3)

Detail Number: RI-ESRWVP-140C

Date drawn: 03/04/2025

Scale: 1 : 5@ A4



## DETAIL ANNOTATION:

1. REFER TO E2/AS1 FOR GENERAL WINDOW OPENING FOR WRAPPING OF FRAMED OPENING PRIOR TO WINDOW INSTALLATION.
2. WINDOW PROFILE TO BE SELECTED TO ACHIEVE COVER SHOWN IN DETAILS.
3. ARCHITRAVE'S ARE SHOWN FOR CONSISTENCY ONLY, DETAIL MAY BE USED WITH REBATED LINER.
4. WHERE SUPPORT BRACKETS REQUIRED BY THE WINDOW MANUFACTURER TO CARRY THE FRAME AND GLAZING LOADS THEY MUST BE SUPPLIED AS AN INTEGRAL PART OF THE WINDOW MANUFACTURER'S RECOMMENDATIONS.
5. LIAISE WITH WINDOW MANUFACTURER PRIOR TO INSTALLATION
6. SEAL HEAD FLASHING TO WINDOW IN VERY HIGH & EXTRA HIGH WIND ZONES
7. TREATED TIMBER CAVITY BATTENS CONTAINING CORROSIVE TREATMENTS MUST BE SEPARATED FROM METAL CLADDING
8. CASTELLATED BATTEN OR APPROVED DRAINED BATTEN CAN BE USED WITH THIS SYSTEM
9. FASTENERS TO BE COMPATIBLE WITH MATERIAL BEING FIXED AND THE SUITABLE GRADE FOR THE ENVIRONMENT IN WHICH LOCATED
10. ALTERNATIVELY REFER TO E2/AS1 FOR FLASHING COVER GUIDANCE
11. CLIPS OMITTED FOR CLARITY
12. HIGH TO EXTRA HIGH WIND ZONES DOUBLE FIX UNDERFLASHING

## GENERAL NOTES:

- These details are to be read with Roofing Industries SPANLOK™ Product Technical Statement and installation guide.
- These details are generally in compliance with E2/AS1 and/or the NZ Metal Roof & Wall Cladding Code of Practice and in some cases specific details by 'Roofing Industries'.
- The building designer is ultimately responsible to ensure that details used meet the requirements of the NZ Building Code for the specific project.
- Details of the supporting structure including cavity battens are indicative only and are the responsibility of the building designer. For steel framed buildings thermal break cavity battens may be required.
- Roof/wall underlay selection are the responsibility of the designer. Underlay to be installed in accordance with underlay manufacturer's recommendations and requirements.
- These details are for Roofing Industries profile/s as nominated and may not be applicable to other profiles.
- This drawing is the copyright of 'Roofing Industries' and can only be copied or reproduced with their permission.
- Further information can be obtained from the NZ Metal Roof & Wall Cladding Code of Practice: [www.metalroofing.org.nz](http://www.metalroofing.org.nz) or E2/AS1.
- Details are for steel based materials, other substrates may require some changes.
- All dimensions are nominal.



interactive assembly  
instructions available

Copyright detail © 2024

<http://wksp.nz/ri-esl-bar>



Get **WORKINGSPEC** from  
Apple App Store/Google Play



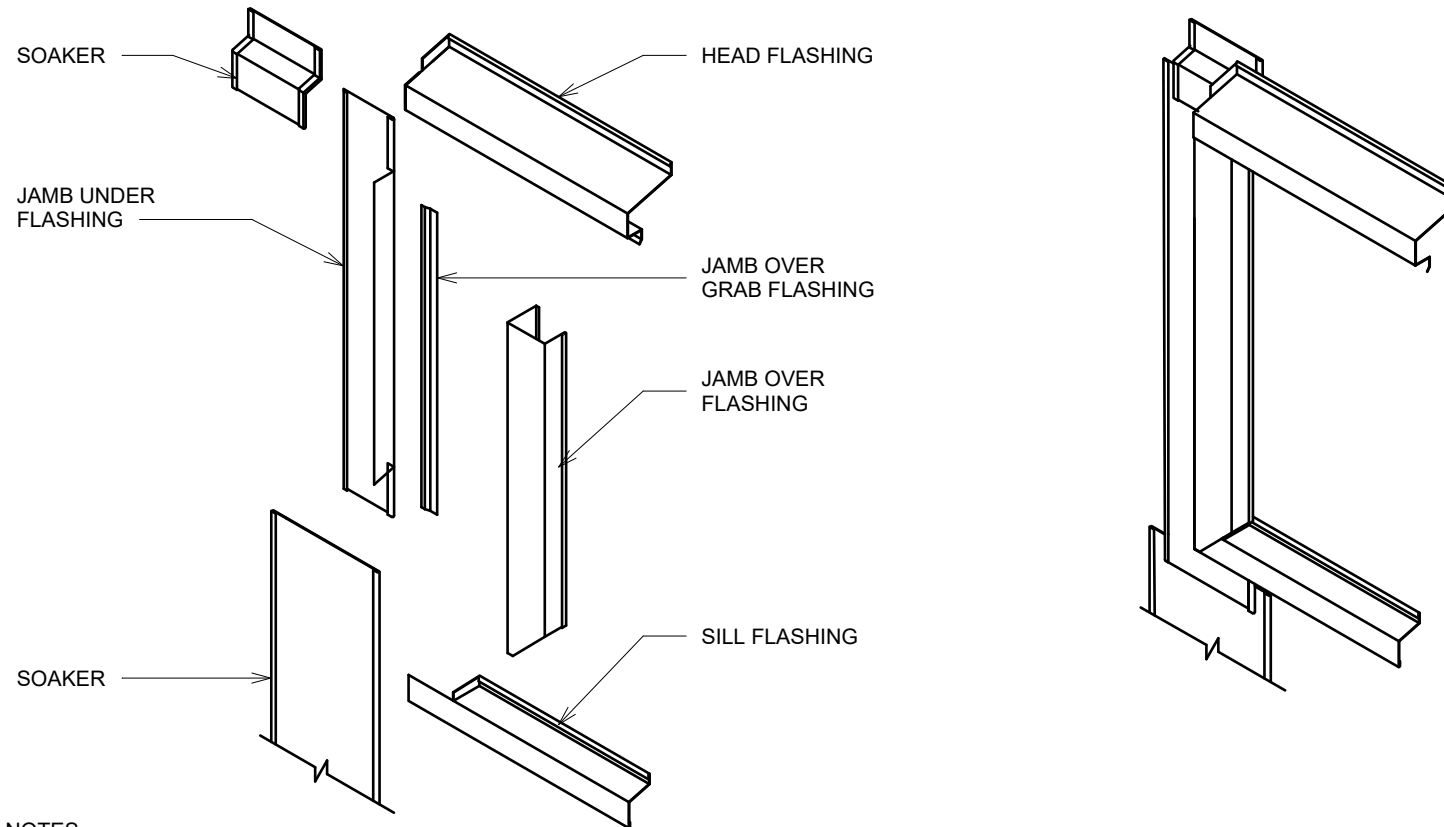


# EUROSTYLE SPANLOK® VARIABLE PAN(VP) WALL CLADDING ON PLYWOOD SUBSTRATE ISOMETRIC FLASHING LAYOUT FOR VERTICAL CLADDING (WINDOW/DOOR OPTION 3)

Detail Number: RI-ESRWVP-140D

Date drawn: 03/04/2025

Scale: 1 : 5@ A4



## GENERAL NOTES:

- These details are to be read with Roofing Industries SPANLOK™ Product Technical Statement and installation guide.
- These details are generally in compliance with E2/AS1 and/or the NZ Metal Roof & Wall Cladding Code of Practice and in some cases specific details by 'Roofing Industries'.
- The building designer is ultimately responsible to ensure that details used meet the requirements of the NZ Building Code for the specific project.
- Details of the supporting structure including cavity battens are indicative only and are the responsibility of the building designer. For steel framed buildings thermal break cavity battens may be required.
- Roof/wall underlay selection are the responsibility of the designer. Underlay to be installed in accordance with underlay manufacturer's recommendations and requirements.
- These details are for Roofing Industries profile/s as nominated and may not be applicable to other profiles.
- This drawing is the copyright of 'Roofing Industries' and can only be copied or reproduced with their permission.
- Further information can be obtained from the NZ Metal Roof & Wall Cladding Code of Practice: [www.metalroofing.org.nz](http://www.metalroofing.org.nz) or E2/AS1.
- Details are for steel based materials, other substrates may require some changes.
- All dimensions are nominal.

Copyright detail © 2024

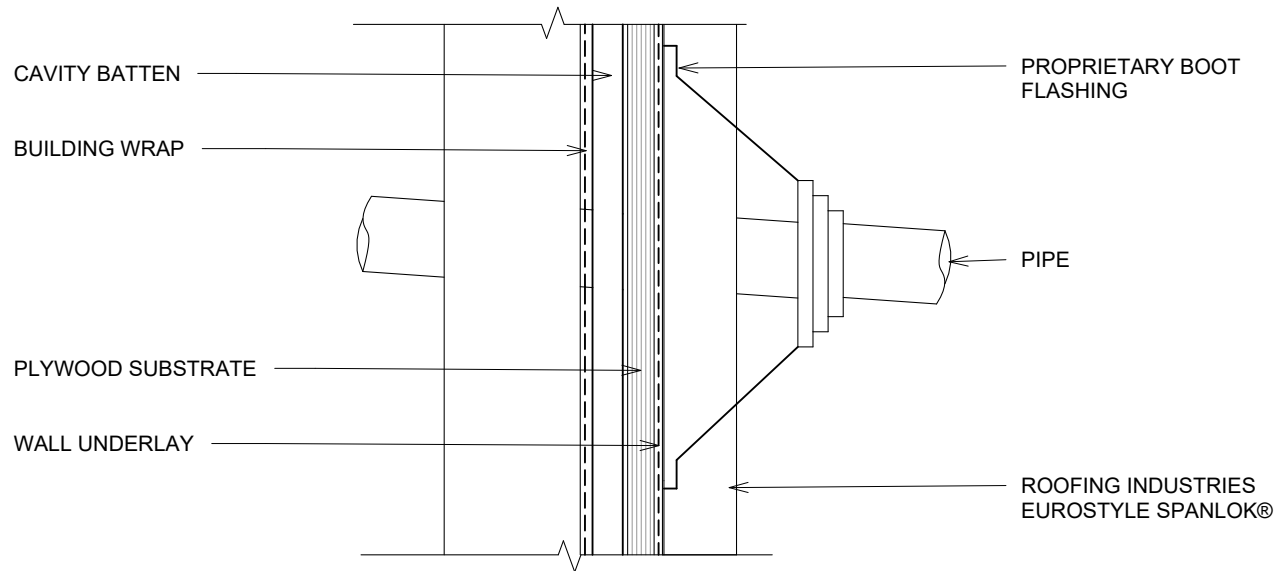


# EUROSTYLE SPANLOK® VARIABLE PAN(VP) WALL CLADDING ON PLYWOOD SUBSTRATE WALL PIPE PENETRATION

Detail Number: RI-ESRWVP-160

Date drawn: 03/04/2025

Scale: 1 : 5@ A4



## DETAIL ANNOTATION:

1. TREATED TIMBER CAVITY BATTENS CONTAINING CORROSIVE TREATMENTS MUST BE SEPARATED FROM METAL CLADDING
2. CASTELLATED BATTEN OR APPROVED DRAINED BATTEN CAN BE USED WITH THIS SYSTEM
3. FASTENERS TO BE COMPATIBLE WITH MATERIAL BEING FIXED AND THE SUITABLE GRADE FOR THE ENVIRONMENT IN WHICH LOCATED

## GENERAL NOTES:

- These details are to be read with Roofing Industries SPANLOK™ Product Technical Statement and installation guide.
- These details are generally in compliance with E2/AS1 and/or the NZ Metal Roof & Wall Cladding Code of Practice and in some cases specific details by 'Roofing Industries'.
- The building designer is ultimately responsible to ensure that details used meet the requirements of the NZ Building Code for the specific project.
- Details of the supporting structure including cavity battens are indicative only and are the responsibility of the building designer. For steel framed buildings thermal break cavity battens may be required.
- Roof/wall underlay selection are the responsibility of the designer. Underlay to be installed in accordance with underlay manufacturer's recommendations and requirements.
- These details are for Roofing Industries profile/s as nominated and may not be applicable to other profiles.
- This drawing is the copyright of 'Roofing Industries' and can only be copied or reproduced with their permission.
- Further information can be obtained from the NZ Metal Roof & Wall Cladding Code of Practice: [www.metalroofing.org.nz](http://www.metalroofing.org.nz) or E2/AS1.
- Details are for steel based materials, other substrates may require some changes.
- All dimensions are nominal.

Copyright detail © 2024

