

EUROSTYLE®

Elegant | Functional | Innovative

EUROSTYLE®

epic™ spanlok® eurolok™ panelok® series

TECHNICAL SECTION

Design consideration

The designer should take into account the following factors when specifying one of the Eurostyle® products:

- » Profile and pan width
- » Installed on solid substrate or attached to purlins and girts
- » Site environmental conditions
- » Material type and finish
- » Roof pitch
- » Sheet lengths
- » Standard or seamed lap
- » Wind loadings and spanning capabilities
- » Snow design
- » Swaged to reduce “canning” or alternative non swaged profile
- » Reference to Eurostyle® technical drawings and Product Technical Statement(s)

Most of this information is readily available from our website, technical literature, or NZ Metal Roof and Wall Cladding Code of Practice.

Swaging technology

Advanced Eurostyle® manufacturing technology minimises the incidence of surface aesthetics commonly associated with wide pan profiles, however, with some metals there is virtually no escaping minor imperfections. To further assist in removing surface deformation, Eurostyle® does provide optional swaging options. For **spanlok®** and **eurolok™**, a permanent clip relief swage close to the sides of the pan creates aesthetically pleasing effects with the contrasting shade and light. Refer to the profile Product Technical Statement at www.roof.co.nz.

Minimum roof pitch

The minimum roof pitch for **spanlok®** and **eurolok™** is 3 degrees. Minimum pitch is governed by profile type, sheet length, cross welt transverse joints and snow loadings. For further and more detailed information, refer to the Product Technical Statement(s) available from our website www.roof.co.nz.



The minimum roof pitch for **epic™** roofing type profile varies between 3 and 7 degrees dependant on profile type, sheet length, cross welt transverse joints and snow loadings. For further and more detailed information, refer to the Product Technical Statement(s) available from our website www.roof.co.nz.

With the exception of **epic™** double standing seam, Eurostyle® products are available in the following substrates and surface finishes subject to minimum order and material availability.

- » Copper
- » AM
- » Zincalume®
- » Aluminium
- » Stainless steel
- » Natural Zinc
- » Colorcote® ZinaCore™, MagnaFlow™, AlumiGard™
- » Colorsteel®, Maxam™, Altimate®
- » Euramax

Durability

Selection of the correct grade of material and appropriate surface coating is imperative to ensure any of the Eurostyle® range of products will perform satisfactorily in the environment to be installed and meets the requirements of the NZ Building Code. Environmental categories and materials literature is available from our website.

Wind loadings

Eurostyle® products have been extensively tested in accordance with the NZMRM test procedure on the industry test rig utilising variations in purlin/girt spacings. Wind Load Span Design Graphs to determine appropriate spanning are available from the Product Technical Statement(s) available on our website www.roof.co.nz.

Curving

Eurostyle® **epic™** Angle Seam and Roll Seam profiles can be either drape, concave or convex curved to varying radii with this dependant on curve type, plus material and thickness used as the profile substrate. Further information is available by contacting Roofing Industries.

Underlay

An absorbent breather type roof/wall underlay complying with NZS2295 is recommended under all Eurostyle® profiles.

Ventilation

Eurostyle® products like any metal roof must have provisions for ventilation of the roof space to allow condensation to dissipate.

Ventilation should be provided at the eaves and ridge. Where a plywood substrate is used, it is imperative that a ventilated space of at least 40 mm is provided under the plywood with air flow to eaves and ridges.

It is strongly recommended that an underlayment drainage mat be used which provides a thin layer of scrambled nylon between the plywood and Eurostyle® profiles allowing ventilation to occur.

Ventilation is particularly important with skillion type roofs.

Roof expansion provisions

Refer to the Eurostyle® Product Technical Statement(s) available from our website www.roof.co.nz.

Accessories

A full range of matching accessories is available, including flashings, fasteners, underlays, drainage matting, insulation and EZI-FLO™ rainwater systems.

IMPORTANT:

Surface undulation “Canning”

Canning is defined as a perceived waviness across the flat area of (in particular, but not limited to) wider metal panels. It is a naturally occurring phenomenon and can be more discernible under shallow cross lighting, variation in light source, temperature and thermal changes. Canning is an aesthetic issue and not a structural problem or defect. The property owner, builder, specifier should be aware that these undulations do not affect performance.

Aesthetic undulations can be further minimised with the use of low gloss prepainted surfaces, addition of swages and narrower pan widths.

Further guidelines should be consulted in the product's Product Technical Statement(s).

Ordering

Roofing Industries staff can provide technical assistance to ensure accurate ordering of roofing, cladding and accessories thereby avoiding costly errors. Eurostyle® products can be manufactured on site or delivered from the factory direct to site subject to minimum order quantity and transportation restrictions. NB. Onsite manufacture requires specific quotation.

Spouting and guttering

To avoid exposing the end of the roof sheeting at the gutter line it is recommended that consideration be given to the use of a higher face spouting or gutter system, particularly at lower roof pitches.

Fixings and fasteners

All fixings and fasteners are to be of an approved type, compatible with all materials, the environment and meeting the requirements of the NZ Building Code. It is imperative that installation is to be in accordance with the NZ Metal Roof and Wall Cladding Code of Practice and Product Technical Statement(s).

Handling and storage

Due to both profile shape and the width of pans, all Eurostyle® profiles require additional care during delivery, onsite storage and during roof loading.

IMPORTANT! On delivery, read the pack label and visually inspect the sheets for damage.

- » Store profiles and accessories on evenly spaced and supportive dunnage, clear of the ground and under cover.
- » Long lengths of roofing should be lifted onto the roof using an approved load spreading beam.
- » Eurostyle® products are supplied with plastic strippable film and should be kept under cover and removed as the product is being installed.



Installation

Eurostyle® products require specific installation skills with products only installed by fully trained and competent professionals. Prior to commencing the project and to avoid voiding any warranty, refer to Roofing Industries Product Technical Statement(s) and supporting literature available from our website www.roof.co.nz.

Maintenance

Maintenance Guides are available at www.roof.co.nz and should be consulted in order that warranty conditions are fulfilled.

Warranties

Warranties meet or exceed the statutory requirements of the NZ Building Code, are available on request and reflect our New Zealand owned and operated company, test facilities and local climatic conditions. Available at www.roof.co.nz

Further technical advice

During the design process involving Eurostyle® products, it is of paramount importance that building designers should refer to further detailed technical information contained in the Product Technical Statement(s) and supporting literature available from our website www.roof.co.nz.



epic™ spanlok® eurolok™ panelok® series



Roofing Industries
www.roof.co.nz

Auckland	(Head Office) 5 John Glenn Avenue, North Harbour 0632
Whangarei	4A Fraser Street, Whangarei 0112
Pukekohe	212 Manukau Road, Pukekohe, South Auckland 2120
Hamilton	63 Tasman Road, Avalon, Te Rapa 3200
Tauranga	80 Portside Drive, Mt Maunganui 3116
Taupo	1158 Rakaunui Road, Taupo 3351
Napier – Hastings	Corner Irongate Road East and Poporo Way, Longlands, Hastings 4175
New Plymouth	14 Constance Street, Waiwhakaho, New Plymouth 4312
Palmerston North	653 Tremaine Avenue, Palmerston North 4410
Wellington	22 Cornish Street, Petone, Wellington 5012
Blenheim	5 Kendrick Road, Riverlands 7274
Christchurch	12 William Lewis Drive, Sockburn 8042
Dunedin	33 Strathallan Street, South Dunedin 9012
Cromwell	3 Proctor Way, Cromwell 9310
Invercargill	133 Bill Richardson Drive, Avenal 9810

Roofing Industries Technical Helpline 0800 844 822 **WWW.ROOF.CO.NZ**

Eurostyle® products are outside of the scope of E2/AS1 and are therefore subject to specific design details. This literature should be read in conjunction with our published technical information.





EUROSTYLE®
epic™ series



EUROSTYLE®
spanlok® series



EUROSTYLE®
eurolok™ series



EUROSTYLE®
panelok® series



The **epic™** series of profiles remain the backbone of Roofing Industries traditional tray type products, are well proven and remain at the forefront of the residential and commercial construction industry. Normally installed over a solid ply substrate, **epic™** profiles form an integral part of elite roofing, cladding, walling and panelling systems with variation in profile choice most certainly stretching architectural boundaries by offering elegance, design flexibility, sustainability all supported by extensive material choice.

Applications

- » Residential roofing and cladding
- » Commercial roofing and cladding
- » Heritage buildings
- » Public buildings
- » Sporting arenas
- » Churches and art galleries
- » Alpine snowfall areas
- » Internal and external wall panelling

Materials

epic™ series profiles are manufactured using a selection of metal substrates and aesthetically pleasing surface finishes meeting many challenging environmental, climatic, sustainability or design considerations.

Manufacturing capability

epic™ is manufactured and available nationally and is supplied cut to any length and freighted to site subject to transportation limitations. Onsite manufacturing utilising portable machinery is also available subject to minimum order quantity and specific quotation.

Profiles

Angle Seam

Displays a wider effect of the seam providing a striking appearance in both roofing and cladding situations.

Double Standing Seam (Roofing only)

A traditional tray profile which offers superior performance in high wind, rainfall and snow. Available in Copper, Natural Zinc and Aluminium.

Roll Seam

A seamed cap profile that offers variable shading in any roof or wall cladding application, yet still providing minimalistic lines.

Roll Cap

Displays the boldest effect of any of the Eurostyle® profiles with highly defined longitudinal lines providing light and shade variations.

Snap Lock

Provides a similar but slightly bolder look to Double Standing Seam, however is secret screw fixed and clipped together rather than seamed.

Soffit Panel - (Refer panelok®)

An interlocking panel available as butt join or variable recessed joint up to 15 mm suitable for soffits and wall panelling offering a striking appearance.

Standard pan widths (nominal)

Pan width is both profile and project dependant and can range from 195 mm to 515 mm. For further information please visit www.roof.co.nz

Swages

Swages can be added to each profile thereby altering aesthetics, increasing strength and to assist with “canning”.

Purlin and girt spacing

Recommended spacings are available from the Product Technical Statement(s) on our website, www.roof.co.nz



spanlok® - A revolutionary and recent innovative range of standing seam wide tray roofing and cladding profiles, which have been specifically designed to attach directly to purlins and girts without the need for solid plywood support thereby greatly reducing construction costs.

Encompassing a higher 45 mm standing seam rib, **spanlok®** can also be supplied as “Roll Cap” profile using a proprietary fixing cap. **spanlok®** is available in varying tray widths and allows building designers flexibility and project design individuality.

Applications

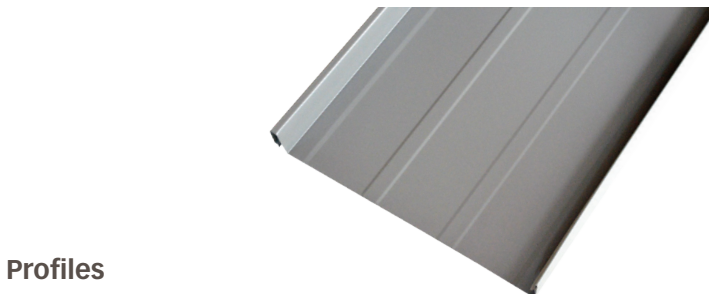
- » Residential roofing and cladding
- » Commercial roofing and cladding
- » Heritage buildings
- » Public buildings
- » Sporting arenas
- » Churches and art galleries
- » Alpine snowfall areas
- » Internal walling

Materials

spanlok® is manufactured using a selection of metal substrates and aesthetically pleasing surface finishes thereby satisfying challenging environmental, climatic, sustainability or design considerations.

Manufacturing capability

spanlok® is manufactured and available nationally and is supplied cut to any length and freighted to site subject to transportation limitations. Onsite manufacturing utilising portable machinery is also available subject to minimum order quantity and specific quotation.



Profiles

Standing Seam

spanlok® clip relief swage - permanent
Optional swages (recommended) to reduce canning

Roll Cap

56 mm
Optional swages (recommended) to reduce canning

Standard pan widths (nominal)

.55BMT plain and prepainted steel	.90 Aluminium and AlumiGard™ / Altimate®	.70 Copper
370 mm 450 mm	— 445 mm	335 mm —

NB. For variations other than standard sizes and materials displayed, contact Roofing Industries or visit www.roof.co.nz.

Purlin and girt spacing

Recommended purlin and girt spacings are contained in the table below, and **spanlok®** Product Technical Statement(s) reference must also be made to Wind Loading Section as this may limit purlin and girt spacing.

	Roof	Walls
Intermediate Span	600 mm	800 mm
End Span	450 mm	450 mm



Manufactured in the South Island as a standing roofing and cladding profile with a 50 mm rib height and accentuated with wider ribs, **eurolok™** exhibits stunning shadow lines. **eurolok™** can also be onsite formed with an angle seam feature particularly ideal during intense rainfall.

Applications and materials

eurolok™ is suitable for use in a wide range of residential and commercial projects and is manufactured using a selection of metal substrates and aesthetically pleasing surface finishes.

Profiles

50 mm
eurolok™ clip relief swage - permanent
Optional swages (recommended) to reduce canning
Standard locked finish
Optional angle seamed finish

Standard pan widths (nominal)

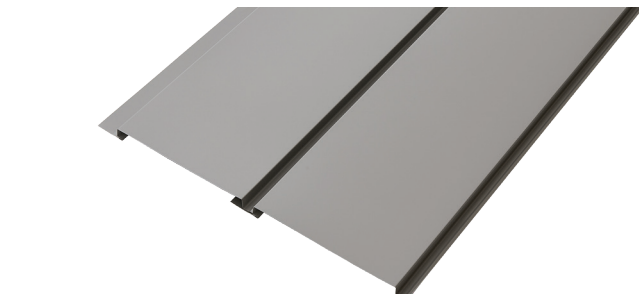
.55BMT plain and prepainted steel	.90 Aluminium and AlumiGard™ / Altimate®	.70 Copper
365 mm 450 mm	— 445 mm	335 mm 450 mm

NB. For displayed variations other than standard sizes and materials displayed, contact Roofing Industries or visit www.roof.co.nz

Purlin and girt spacing

Recommended purlin and girt spacings are contained in the table below. Reference should also be made to the Wind Loading Section and Product Technical Statement(s) as this may limit purlin and girt spacing.

	Roof	Walls
Intermediate Span	600 mm	800 mm
End Span	450 mm	450 mm



panelok® is a recent innovation within the Eurostyle® stable of products as an external and internal “negative detail” architecturally inspired metal wall and cladding system providing building designers with a stylish cladding alternative. **panelok®**’s stunning visual effect ultimately complements modern residential and commercial architectural featured design.

Manufacturing capability

Manufactured in varying widths, metal substrates and with an extensive selection of surface colours and finishes, **panelok®** incorporates a negative detail interlocking panel system.

Profiles

24 mm

Negative detail

Up to 15 mm. Additional spacing up to 25 mm is permissible using fasteners within the negative detail. Refer: **panelok®** Product Technical Statement.

Standard and variable pan widths

- 215 mm, 255 mm (standard), 265 mm and 400 mm.
- For other widths, contact Roofing Industries.

Girt and wall frame spacings

Refer: **panelok®** Product Technical Statement at www.roof.co.nz