

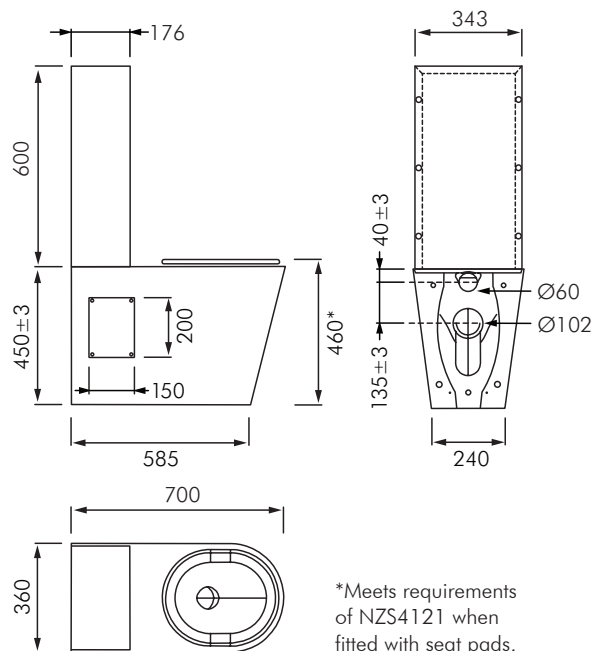
FRFM5

STAINLESS STEEL FLOOR MOUNTED ACCESSIBLE TOILET PAN



FRFM5

FRFM5 with FRFM5-
 VPBR back rest fitted



DESCRIPTION

Franke floor mounted back to wall stainless steel toilet pans are built for installation in areas where vandalism is likely to cause damage to ceramic toilet pans. Fabricated in 1.2mm Type 304 stainless steel with a satin finish, they are available with or without seats or alternatively with seat pads fitted. All Franke toilet pans are designed to flush with 6L of water.

INSTALLATION

This is a accessible compliant toilet pan, designed for face wall/floor mounting. Access panels on each side of the toilet pan allow the plumber to face wall fix and to complete plumbing connections. Alternatively it can be through wall bolted if there is a plumbing duct behind the pan. Supplied as standard P trap it can be converted to S trap if preferred by using a proprietary waste elbow.

It is also available as a suite using either a Zurn flush valve (refer FRFM5-ZHVP Tech Data) or a WISA inwall cistern (refer FRFM5-300VP Tech Data) with the valve or cistern hidden behind a surface mounted stainless steel cover.

OPTION

The FRFM5 can also be supplied with a stainless steel backrest (as shown) in order to comply with disabled access code. This is supplied loose and bolted through wall. Only suitable where there is a duct directly behind the WC.

MODELS

FRFM5 - Floor mounted, P trap, back to wall toilet pan with access panels on the side of the toilet pan allowing face wall fixing.

OPTIONS:

- FRSP** - Grey PVC seat pads.
- FRSW** - White PVC seat and lid.
- FRSB** - Black PVC seat and lid.

FRFM5-VPBR - Backrest supplied loose.

