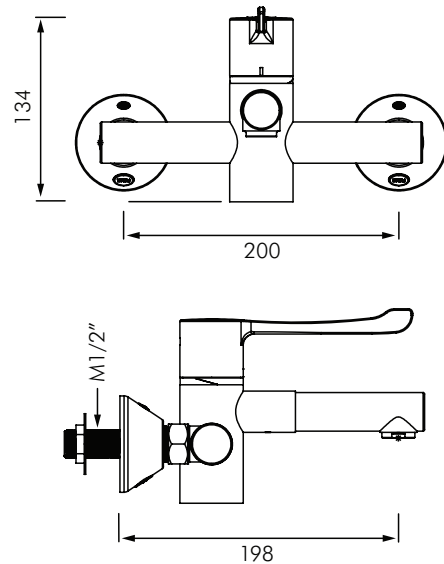


DEH9614

SECURITHERM MIXER WITH BIOCLIP SPOUT

DELABIE



DESCRIPTION

Wall-mounted sequential thermostatic basin mixer with bioclip spout. Securitouch thermal insulation prevents body from getting hot.

- Bioclip removable spout can be easily cleaned and de-scaled.
- Progressive temperature control from cold water to 40°C, reduces the risk of scalding.
- Wall mounted for increased drop height, reducing retro-contamination and optimising hand washing.
- Easy to remove for cleaning and servicing.

This mixer comes standard with two removable stainless steel spouts and with 2 in-line stop/purge connectors.

INSTALLATION

- Temperature limiter pre-set at 40°C.
- Limited to 7 L/min flow (at 300kPa).
- Delivered through a flow straightener (not an aerator).
- 1/2" BSP connections to eccentrics.
- Pressure range: 100 to 500kPa (300kPa recommended).
Max pressure difference at inlets is 100kPa.
- For anti-scalding safety, the hot & mixed water temperature differential must be at least 15°C.

MODELS

DEH9614 - Mixer with stop/purge concentric fittings and 2 x stainless steel spouts DE20002.



Auckland (Head Office)

20 Carr Rd, Three Kings
Auckland 1042
P: 09 624 1115
F: 09 624 1110
E: sales@macdonaldindustries.co.nz

Wellington

P: 04 569 8033
F: 04 569 8066

Christchurch

P: 03 348 2356
F: 03 348 2376