

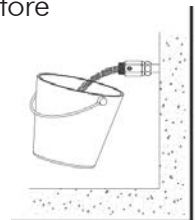
DELABIE - TEMPOMATIC 3 AND 4

DE490006, DE492006, DE440006, DE442006

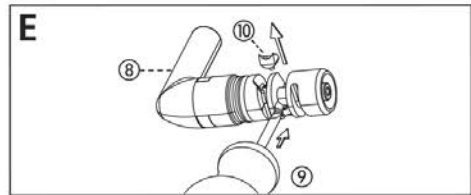
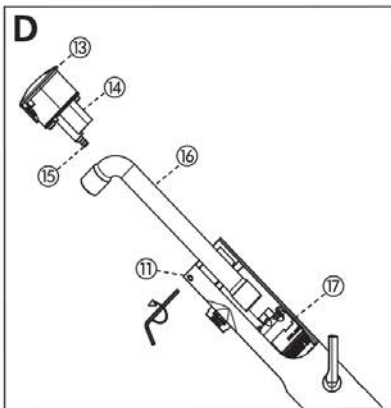
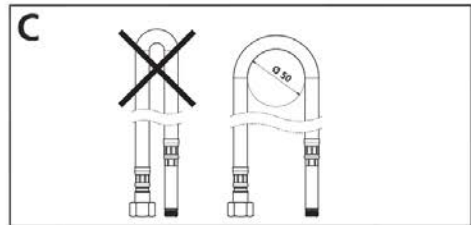
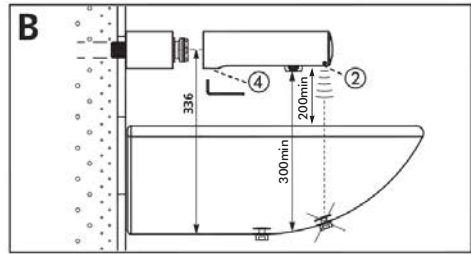
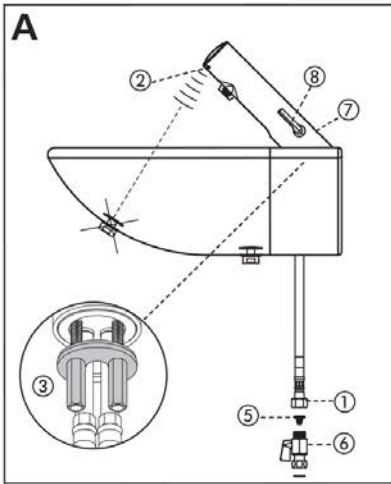
Electronic Mixers/Taps with integrated battery



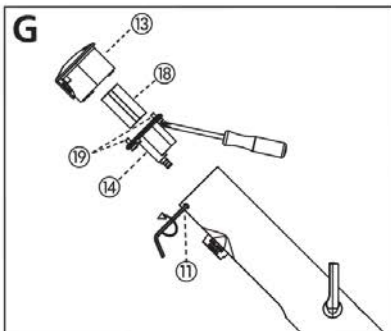
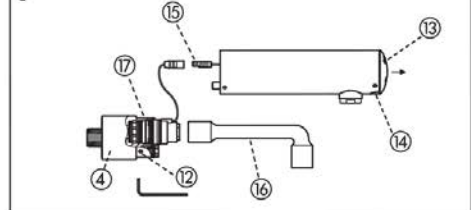
Thoroughly flush the pipes to remove any impurities before installing and commissioning the mixing valve.



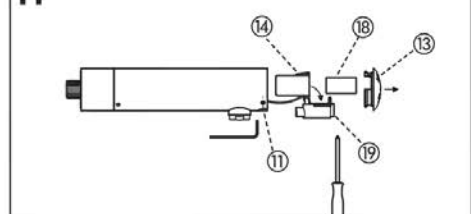
MACDONALD INDUSTRIES LIMITED
INSTALLATION INSTRUCTIONS



F TEMPOMATIC 3: DE443006, DE443016, DE443026



H TEMPOMATIC 3: DE443006, DE443016, DE443026



OPERATION

- Valve opens and closes automatically when hands are presented in the detection zone. Comfort shut-off delay is 3 seconds.
- Anti-blocking safety: a safety delay ensures the valve closes after 30 seconds in case of neglect or if an obstacle is placed in the detection field. Once the obstacle is removed the valve operation will reset automatically.
- Anti-Legionella duty flush: automatic duty flush ~ 45 seconds every 24 hours after the last use.

TECHNICAL FEATURES

- **Non-return valves (1) (fig. A) are integrated into the flexibles (do not remove).**
- Ambient temperature for operation 7°C minimum.

INSTALLATION

- The plug hole should be off-set from the axis of the sensor detection zone (2) (fig. A, B) to avoid self-detection.
- **IMPORTANT: Maximum temperature of water supplied: 70°C.**
- Deck-mounted models: drill a Ø 34mm hole, mount the mixer/tap then tighten the two screws onto the fixing flange (3) (fig. A). Ensure a suitable waterproof seal between the mixer and the work plan appropriate to the type of installation.
- **It is essential to install the filters supplied (5) (fig. A), to protect the non-return valves in the mixer. Do not install any additional washers.**
- Connect the stopcocks (6) (fig. A) to the hot and cold or mixed water supply.
- Balance the pressure between the hot and cold water ($\Delta P < 1$ bar). Recommended pressure: 1 - 5 bar. Maximum pressure: 8 bar. Take care not to pinch the flexibles (fig. C).
- Wall-mounted models: once the base is fixed to the wall, loosen the grub screw (4) (fig. B, F), mount the spout in the correct axis of flow then re-tighten the grub screw (4) (fig. B, F).

ANTI-SCALDING SAFETY DUE TO TEMPERATURE LIMITATION (on mixers)

The mixer is pre-set at the factory with the temperature limiter engaged. Removal of the indicator will increase the outlet temperature. This is recommended if a TMV is installed upstream of the tap or if supply is not higher than 45°. To disengage:

- Loosen the grub screw (7) (fig. A) using a 4mm Allen key and remove the mixing key (8) (fig. A).
- Pry upwards with a flat-headed screw driver (9) (fig. E) e.g. to remove the coloured limiter (10) (fig. E).

Note: For the UK and Ireland, in healthcare and high risk applications, the temperature limiter must be disengaged and a certified thermostatic mixing valve used to provide a safe hot water temperature.

ADJUSTING THE TEMPERATURE

The flow rate is pre-set at the factory at 3 lpm (at 3 bar). Adjust directly on the flow straightener (with adjustable flow rate) using a 2.5mm Allen key:

- notch n°1 = 3 lpm (at 3 bar).
- notch n°2 = 4 lpm (at 3 bar).
- notch n°3 = 5 lpm (at 3 bar).



REMEMBER

- **Our mixers/taps must be installed by professional installers** in accordance with current regulations and recommendations in your country, and the specifications of the fluid engineer.
- **Sizing the pipes correctly** will avoid problems of flow rate, pressure loss and unwanted noise. (Speak with your MacDonald Industries rep for more information).
- **Protect the installation** with filters, water-hammer absorbers and pressure reducers to reduce the frequency of maintenance (recommended pressure: 1 to 5 bar).
- **Install stopcocks** close to the mixer to facilitate maintenance.
- The pipework, stopcocks, bib taps and all sanitary fittings should be checked at least once a year, and more frequently if necessary.

MAINTENANCE AND CLEANING

• **Cleaning chrome**

Do not use abrasive, chlorine or acid-based cleaning products. Clean with soapy water using a cloth or a sponge.

• **Frost protection**

Drain the pipes and operate the mixer several times to drain any remaining water.

MAINTENANCE

- Mixer: regularly check (as often as necessary) the temperature selector and the mixer's two internal seats on which the mixing key turns. Replace as necessary.

Replacing the solenoid valve:

- Shut-off the hot and cold water supply.
- **Deck-mounted models and wall-mounted TEMPOMATIC 4:** loosen the screw (11) (fig. **D**) using a 2.5mm Allen key without removing it totally, and remove the cap (13) (fig. **D**) by rotating slightly downwards.
- **Wall-mounted TEMPOMATIC 3:** Loosen the screw (12) (fig. **F**) using a 2.5mm Allen key without removing it totally, and remove the spout (fig. **F**).
- Remove the electronic unit (14) (fig. **D, F**) and disconnect the connector (15) (fig. **D, F**).
- Using a 17mm socket (16) (fig. **D, F**) for TEMPOMATIC 3, and 13mm for TEMPOMATIC 4, unscrew the solenoid valve (17) (fig. **D, F**).
- Install the new solenoid valve and carefully tighten, ensuring that the thread is not damaged.
- Reconnect the connector (15) (fig. **D, F**) to the electronic unit without replacing the unit.

- Reconnect the water supply and check that the valve opens/closes by activating the electronic cell.
Check that the solenoid valve is watertight inside the mixer body. If there are any leaks, gently tighten the solenoid valve.
- Replace the electronic unit and the cap.
- **Deck-mounted models and wall-mounted TEMPOMATIC 4:** Carefully tighten the screw (11) (fig. **D**).
- **Wall-mounted TEMPOMATIC 3 mural:** Carefully tighten the screws (12) (fig. **F**) on the wall-mounted TEMPOMATIC 3.

Replacing the 6V Lithium battery:

- Low battery life (18) (fig. **G, H**), will prevent the solenoid valve operating and cause the LED, sited on the sensor on TEMPOMATIC 4 or on the TEMPOMATIC 3 electronic model, to blink for 15 days.
- Using a 2.5mm Allen key: loosen the screws (11) (fig. **G, H**) without fully removing them and remove the cap (13) (fig. **G, H**) by rotating slightly downwards.
- Remove the electronic unit (14) (fig. **G, H**).
- Loosen the screw/s (19) (fig. **G, H**) (1 screw on the TEMPOMATIC 3, 2 screws on the TEMPOMATIC 4) to change the battery, leaving the washer in place.
- Replace the assembly, carefully tightening the screws (11) (fig. **G, H**) (taking care not to damage the sensor).

CE Product conforms to current European Directives.



**MACDONALD
INDUSTRIES LIMITED**

Auckland (Head Office)

20 Carr Rd, Three Kings
Auckland 1041
P: 09 624 1115
F: 09 624 1110
E: sales@macdonaldindustries.co.nz

Wellington

P: 04 569 8033
F: 04 569 8066

Christchurch

P: 03 348 2356
F: 03 348 2376

www.macdonaldindustries.co.nz