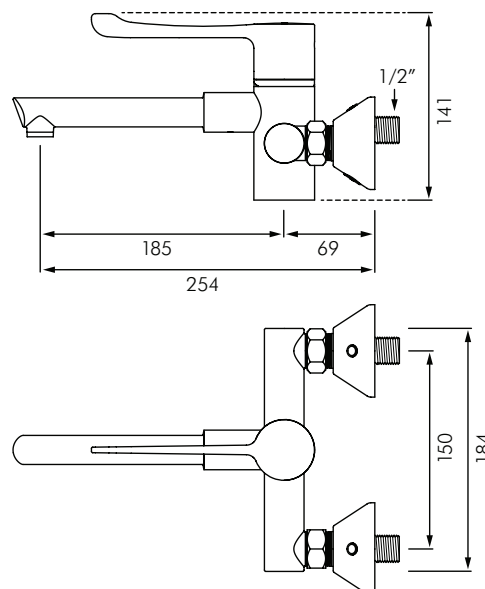


DEH9610

SECURITHERM BIOCLIP THERMOSTATIC BASIN MIXER

DELABIE



DESCRIPTION

DELABIE DEH9610 Securitherm is a wall mounted thermostatic single control basin mixer with smooth interior and Bioclip removable spout. Securitherm thermostatic mixer taps ensures immediate hot water shut off if the cold water supply fails. If the hot water fails the mixer also shuts off. Securitouch thermal insulation prevents burns to the user. The BIOCLIP spout can be removed entirely from the tap body allowing for curative or preventative cleaning/disinfection to eliminate Biofilm and bacteria. Straight spout L.254mm with star shaped flow straightener for no impurity retention. Mixers with smooth interiors have 14x less Biofilm contamination than mixers with standard rough interiors. Flow rate limited to 7L/min at 300kPa. Operating pressure is 100-500kPa, 300kPa is recommended. Easy to use hygienic control lever L.146mm. Temperature is limited to 40°C but is adjustable by the installer to the buildings' required maximum temperature.

Supplied with 2x M1/2" offset stop/purge wall connectors and either 1x disposable Hostaform spout or 2x removable chrome plated stainless steel spouts (see models). Spout can also be replaced with a BIOFIL filter (see separate BIOFIL literature).

INSTALLATION

- Wall mounted 150mm centres +/-20mm with M1/2" offset stop/purge wall connectors.
- Spout can be removed entirely from the tap body for curative or preventative measures in healthcare facilities.
- Flow rate limited to 7L/min at 300kPa.
- Anti-scalding failsafe, Hot water shuts off immediately if cold water fails.
- Temperature limit set to maximum 40°C (is adjustable by installer).
- Minimum 15°C difference between HW and MW.
- Maximum 15% pressure differential between HW and CW.
- Thermal & chemical shocks are possible with this mixer tap.

MODELS

- DEH9610** - Standard model 7L/min supplied with 1x disposable Hostaform spout L.254mm.
- DEH9610-SP** - Same as DEH9610 but supplied with 2x chrome plated stainless steel spouts L.258mm.



Auckland (Head Office)

20 Carr Rd, Three Kings
Auckland 1041
P: 09 624 1115
F: 09 624 1110
E: sales@macdonaldindustries.co.nz

Wellington

P: 04 569 8033
F: 04 569 8066

Christchurch

P: 03 348 2356
F: 03 348 2376