

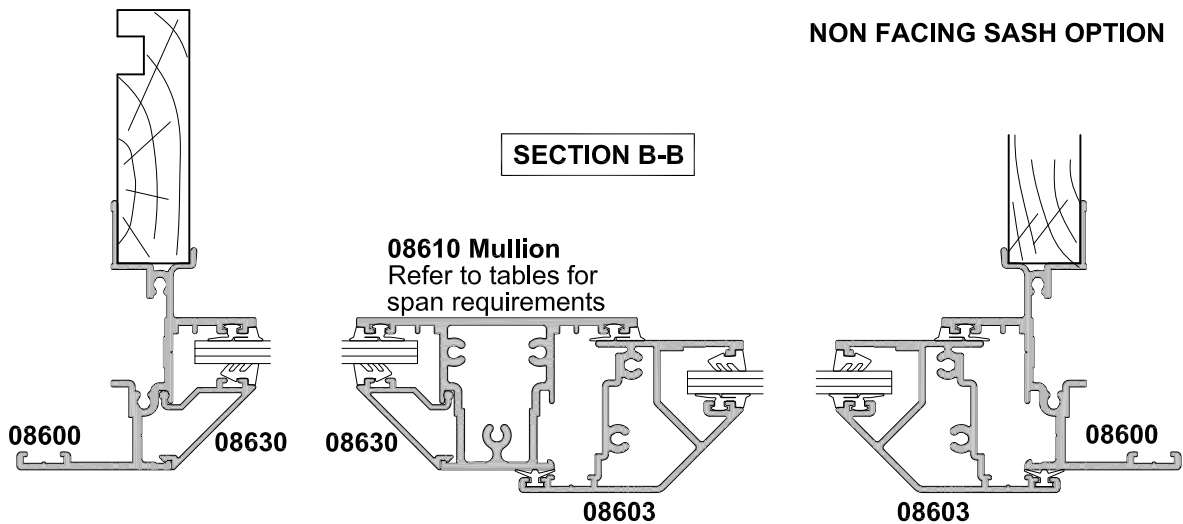
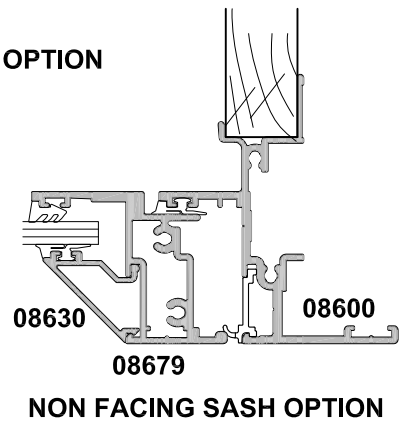
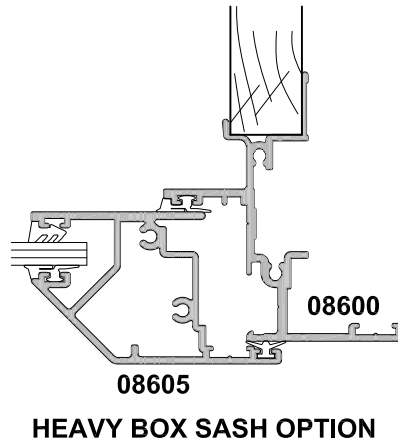
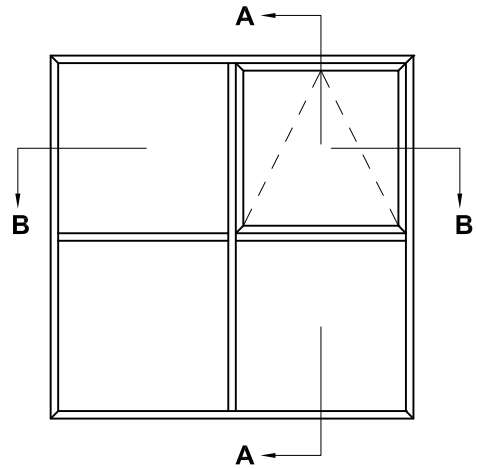
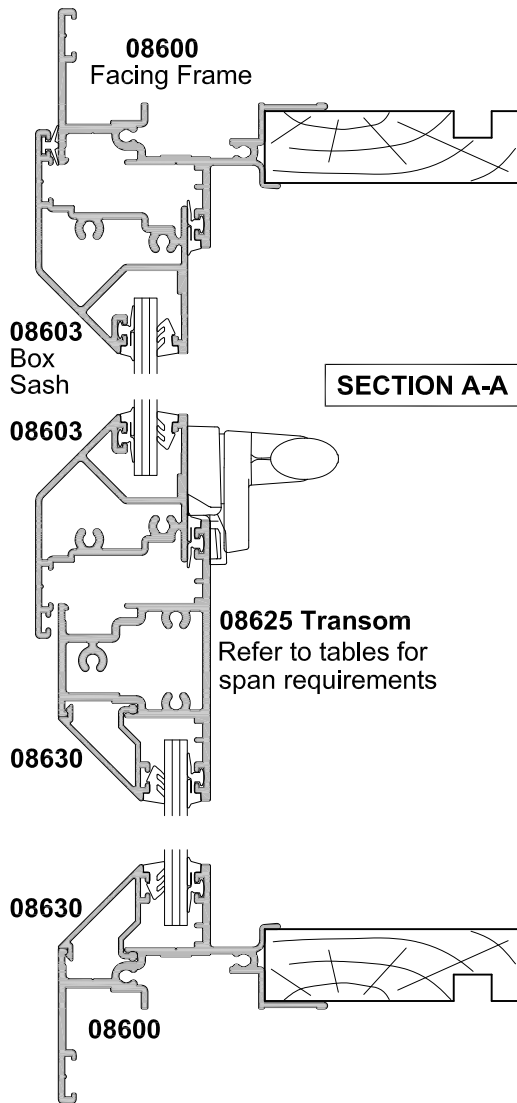


40MM WINDOW SERIES
FACING FRAME
AWNING WINDOW
CROSS SECTION

CAD REF. VC4001-0

DATE
01.06.11

SCALE
1:2



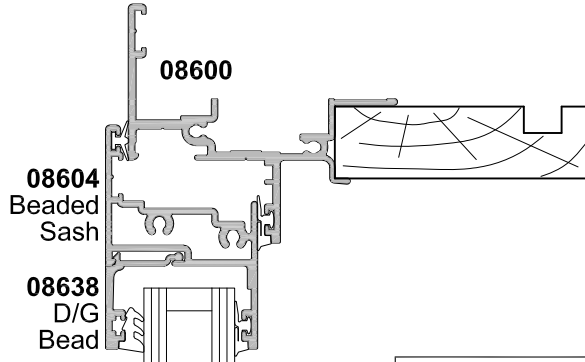


**40MM WINDOW SERIES
FACING FRAME
AWNING WINDOW, DOUBLE GLAZED
CROSS SECTION**

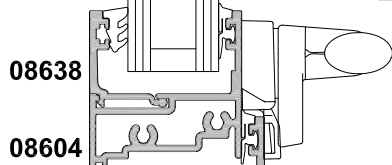
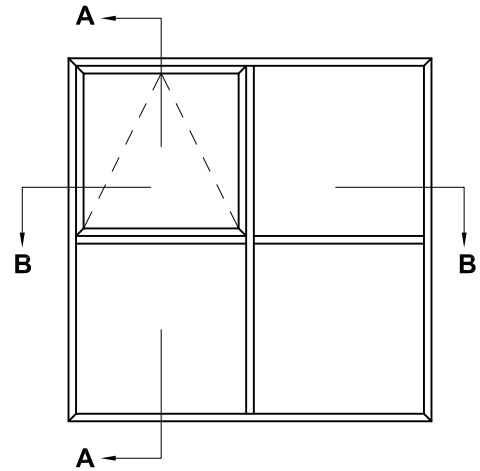
CAD REF. VC4002-0

DATE
01.06.11

SCALE
1:2

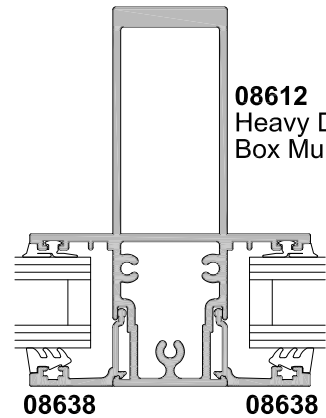
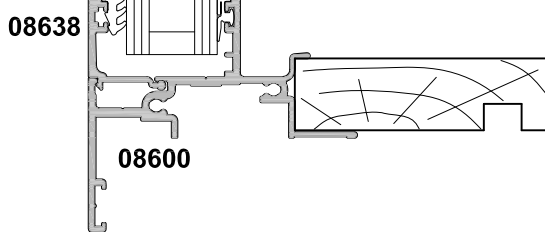


SECTION A-A



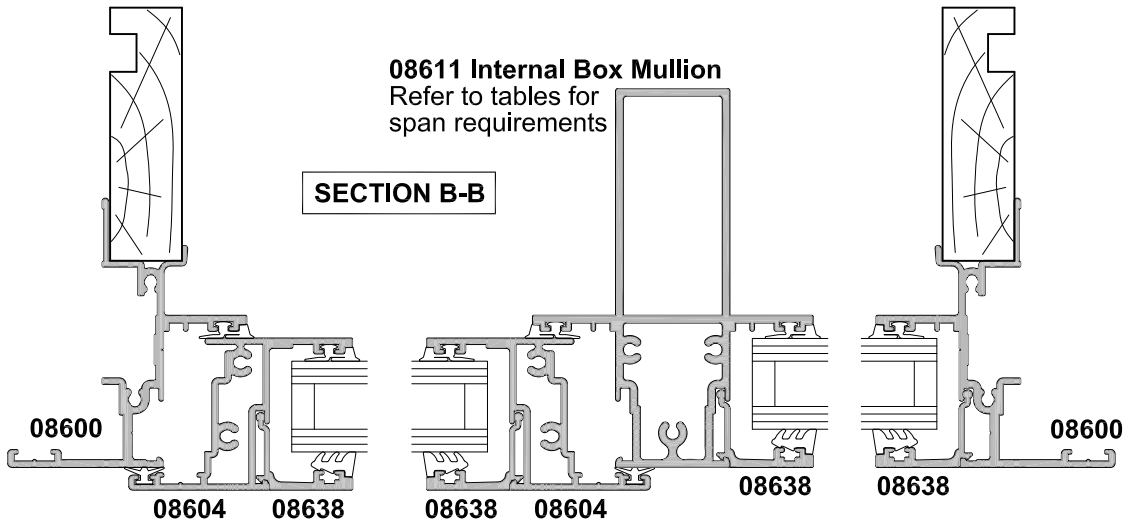
08638
08627 Internal Box Transom
Refer to tables for span requirements

08612
Heavy Duty Internal
Box Mullion



08611 Internal Box Mullion
Refer to tables for span requirements

SECTION B-B



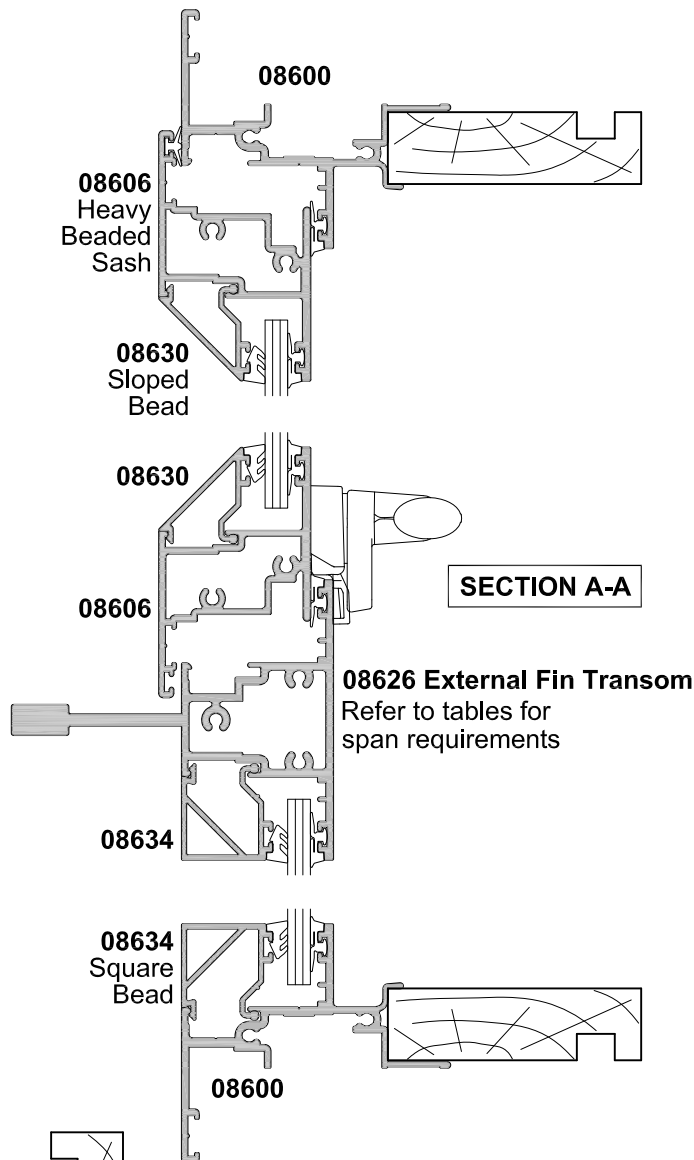


**40MM WINDOW SERIES
FACING FRAME
HEAVY BEADED SASH OPTION
CROSS SECTION**

CAD REF. VC4003-0

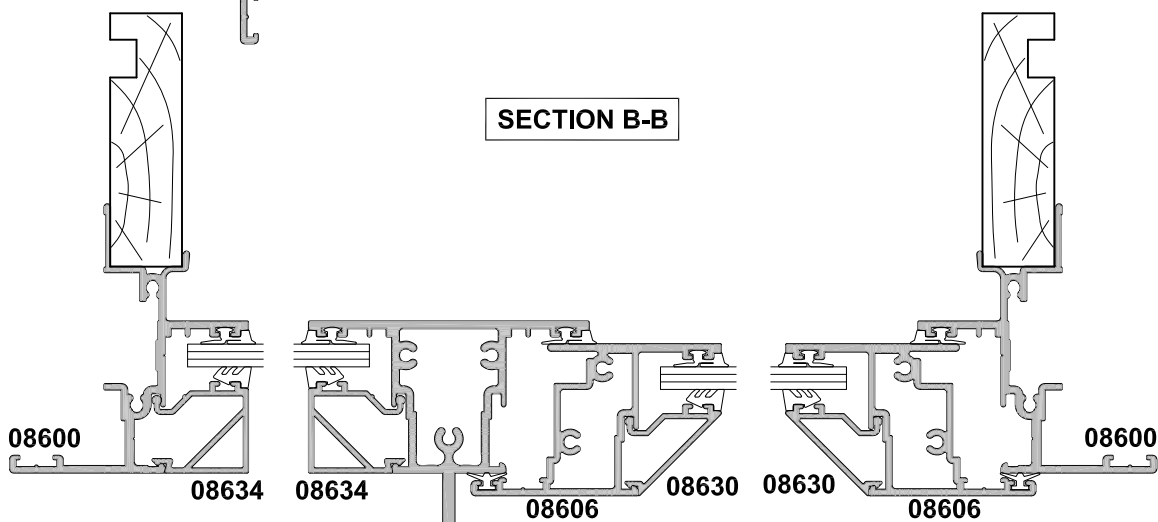
DATE
01.06.11

SCALE
1:2

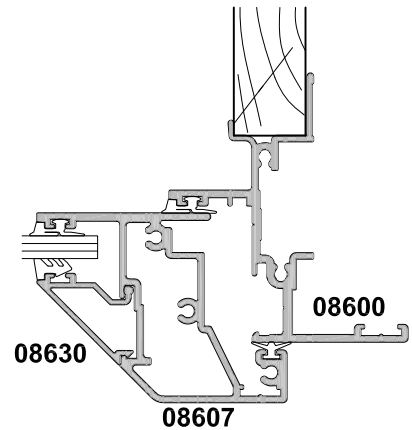
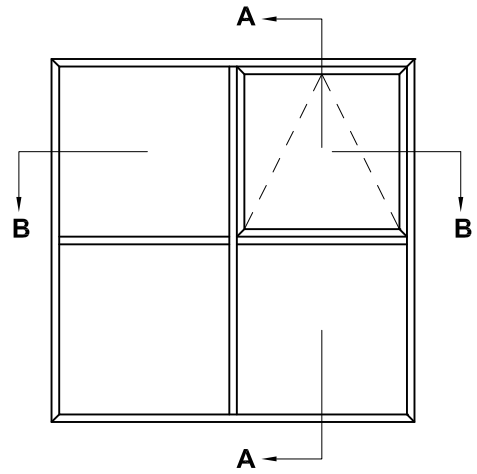


SECTION A-A

08626 External Fin Transom
Refer to tables for span requirements



SECTION B-B



STEPPED BEADED SASH OPTION

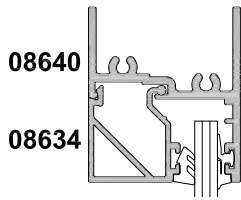
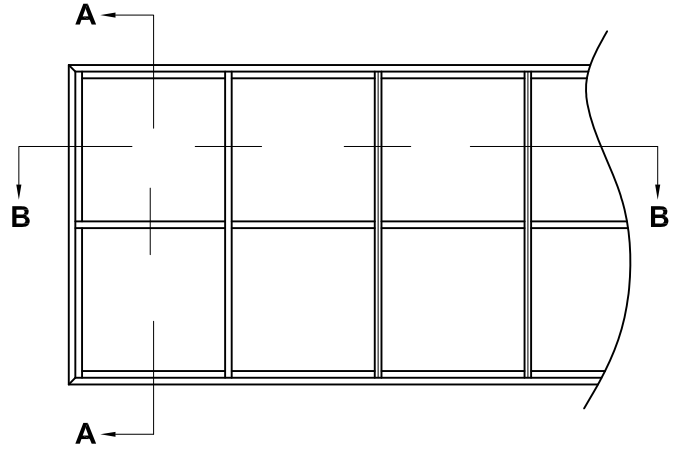


**40MM WINDOW SERIES
STRIP WINDOW
SQUARE BEAD
CROSS SECTION**

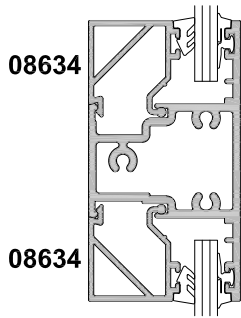
CAD REF. VC4004-0

DATE
01.06.11

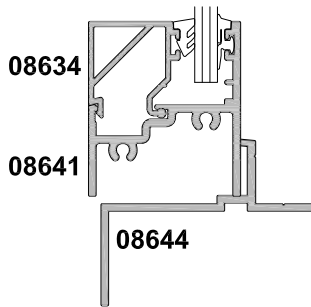
SCALE
1:2



SECTION A-A

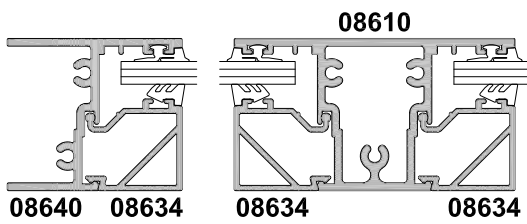


08625 Transom
Refer to tables for span requirements

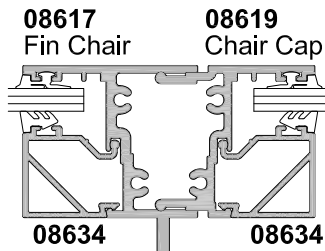


08644

SECTION B-B

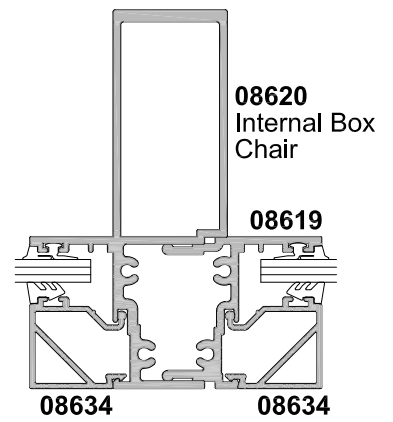


08610



**08617
Fin Chair**

**08619
Chair Cap**



**08620
Internal Box
Chair**

08619

Refer to tables for span requirements

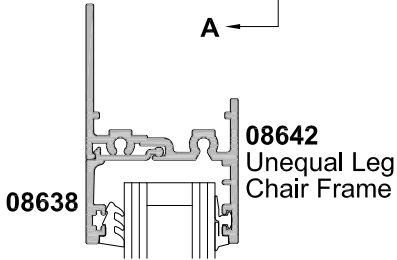
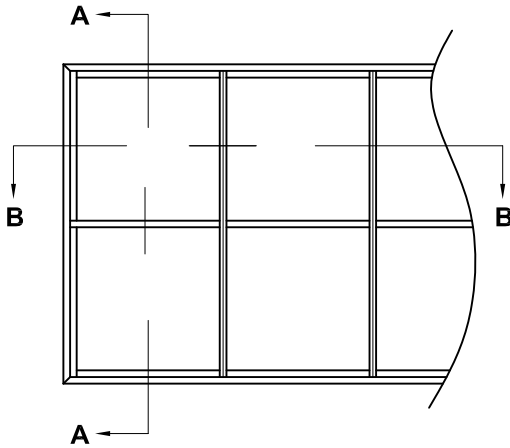


40MM WINDOW SERIES
STRIP WINDOW, DOUBLE GLAZED
SPLIT MULLION OPTIONS
 CROSS SECTION

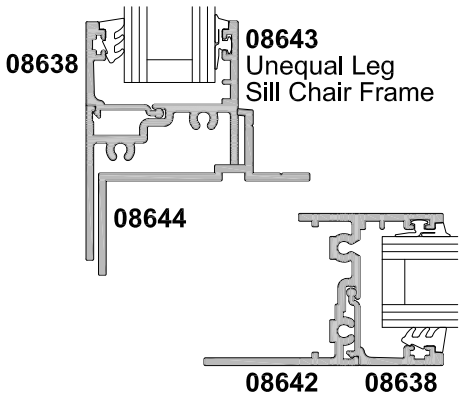
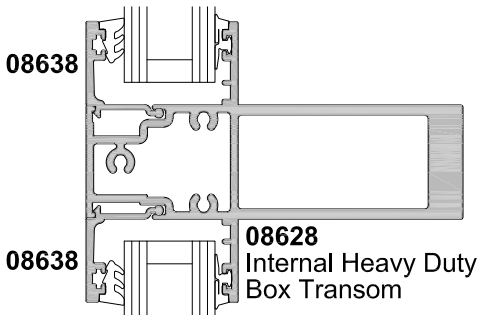
CAD REF. VC4005-0

DATE
01.06.11

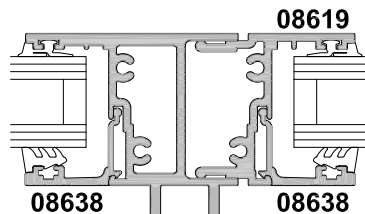
SCALE
1:2



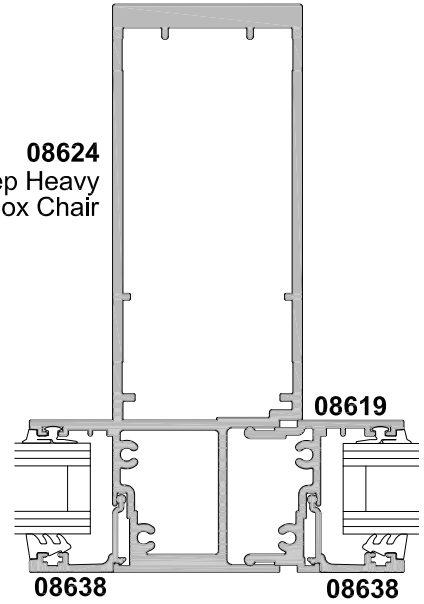
SECTION A-A



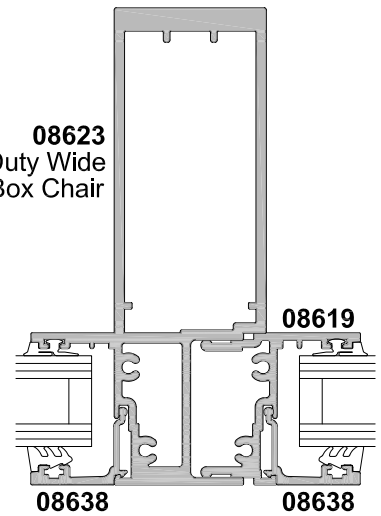
SECTION B-B



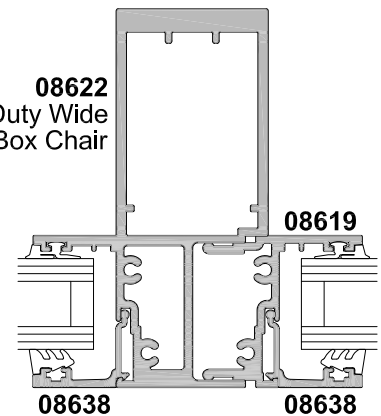
08624
 Wide 110mm Deep Heavy
 Duty Internal Box Chair



08623
 Deep Heavy Duty Wide
 Internal Box Chair



08622
 Heavy Duty Wide
 Internal Box Chair



08618
 Wide Heavy Duty
 External Box Chair

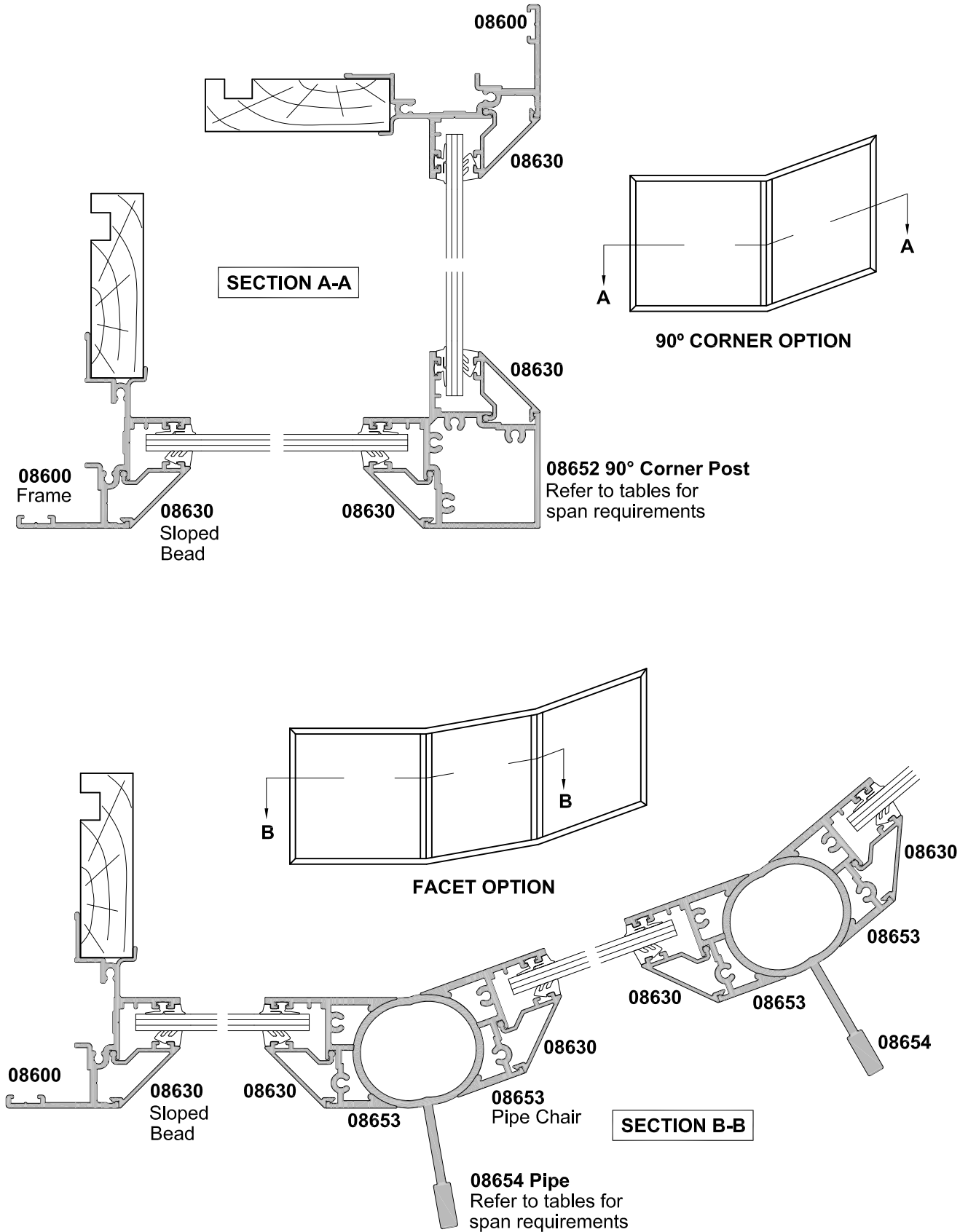


40MM WINDOW SERIES
90° CORNER WINDOW
FACET WINDOW
CROSS SECTION

CAD REF. VC4006-0

DATE
01.06.11

SCALE
1:2



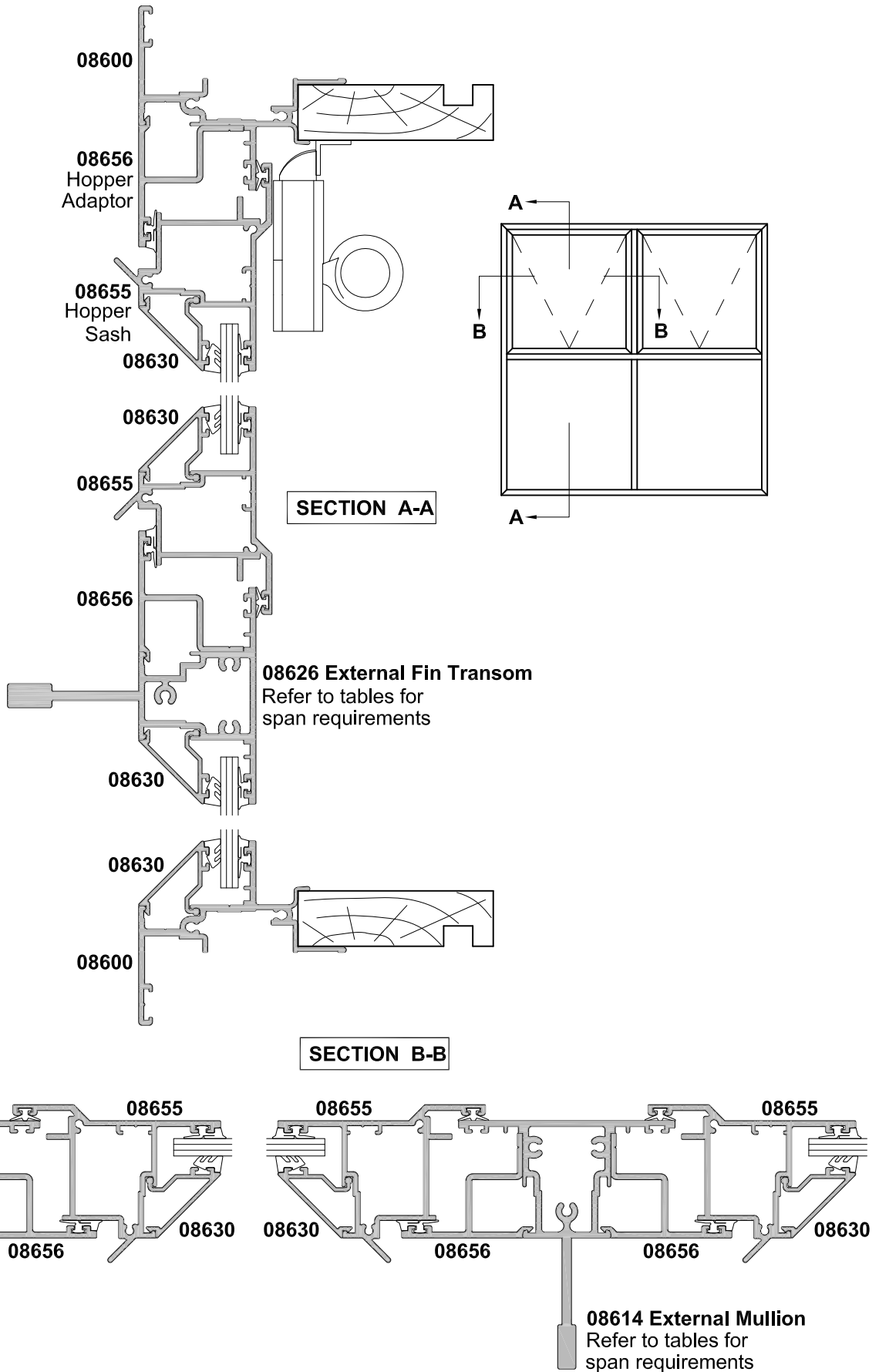


**40MM WINDOW SERIES
HOPPER WINDOW
CROSS SECTION**

CAD REF. VC4007-0

DATE
01.06.11

SCALE
1:2



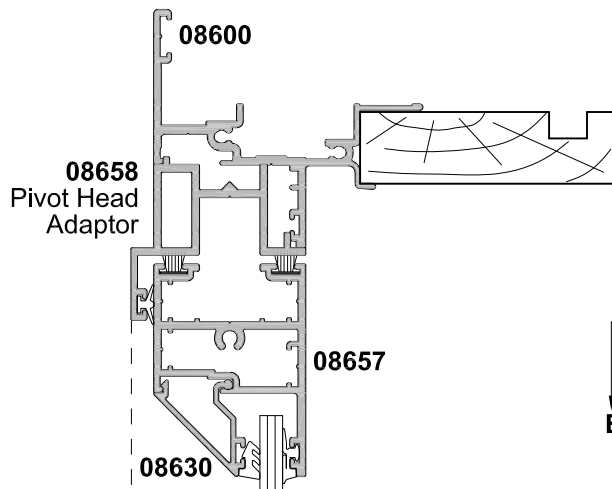


40MM WINDOW SERIES PIVOT WINDOW CROSS SECTION

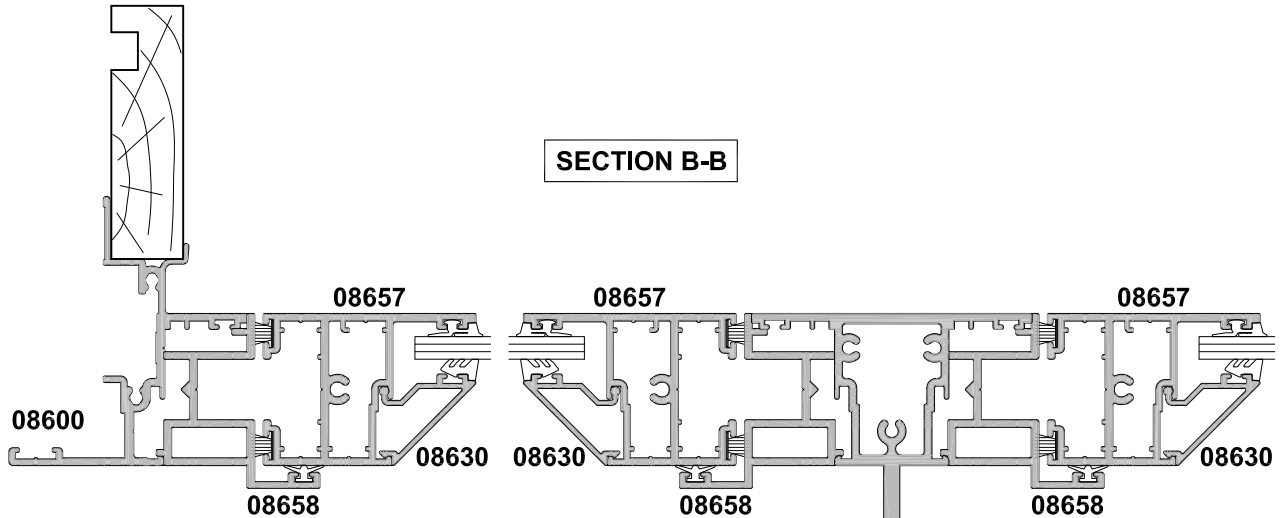
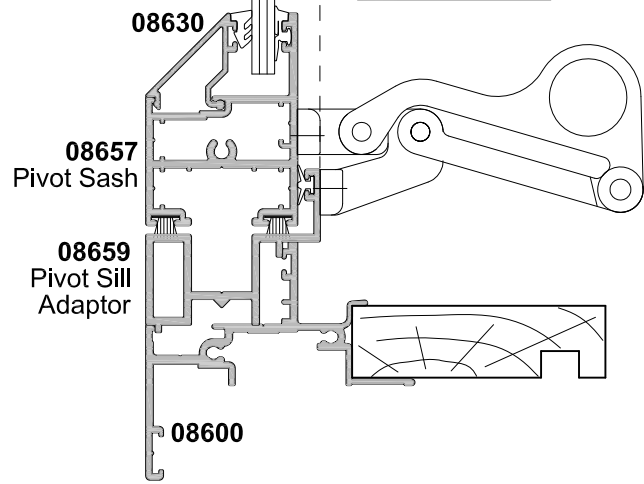
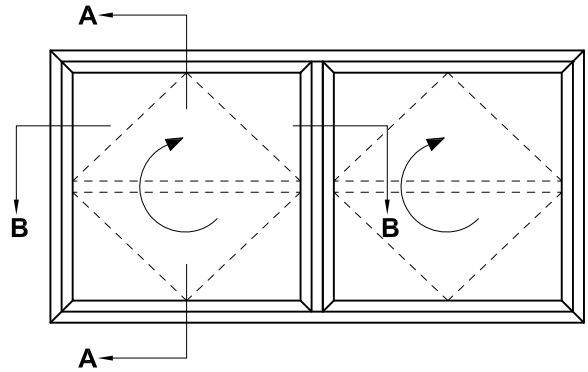
CAD REF. VC4008-0

DATE
01.06.11

SCALE
1:2



SECTION A-A



SECTION B-B

08615 External Fin Mullion
Refer to tables for span requirements

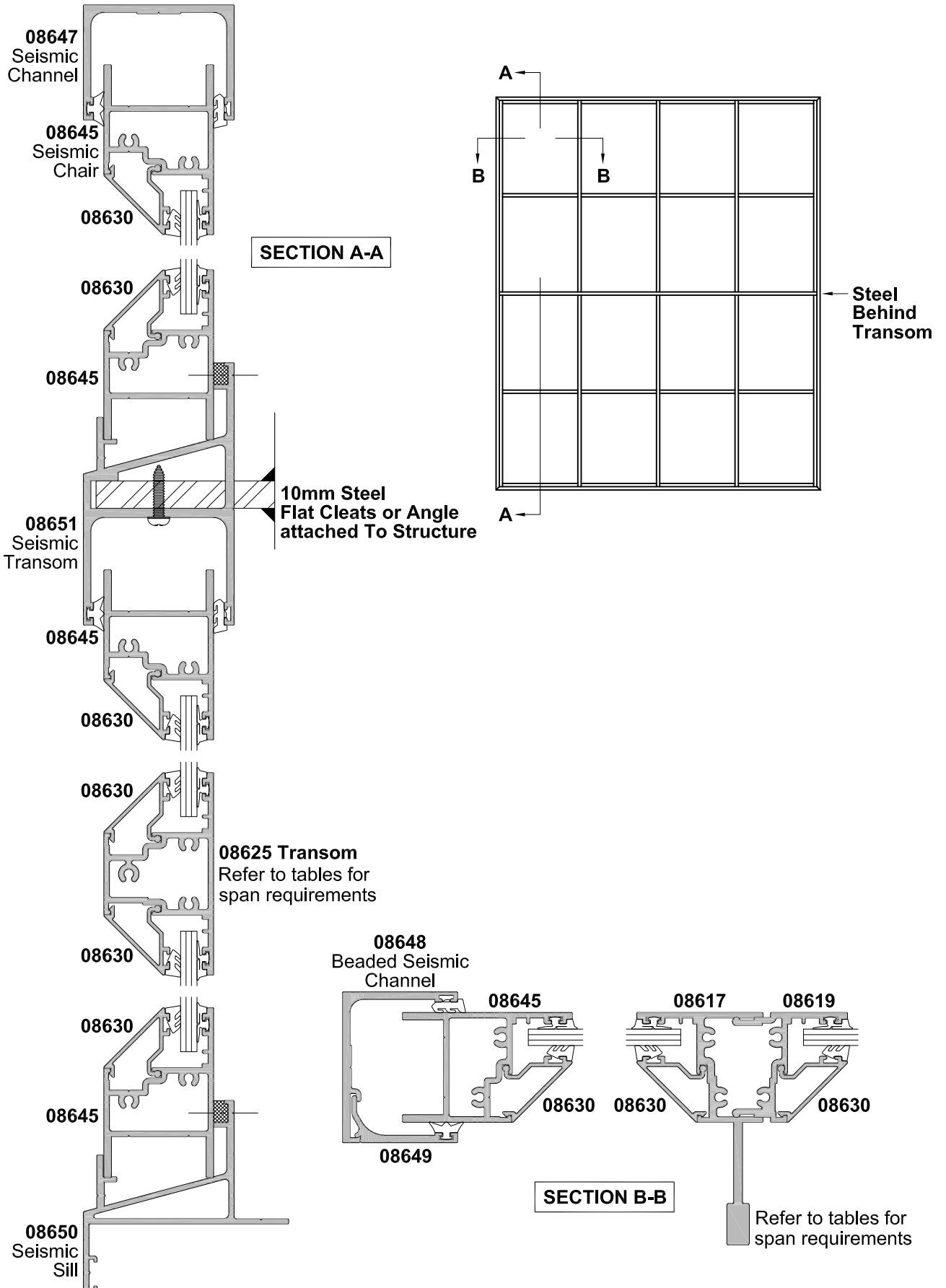


**40MM WINDOW SERIES
SEISMIC FRAME
CROSS SECTION**

CAD REF. VC4009-0

DATE
01.06.11

SCALE
1:2



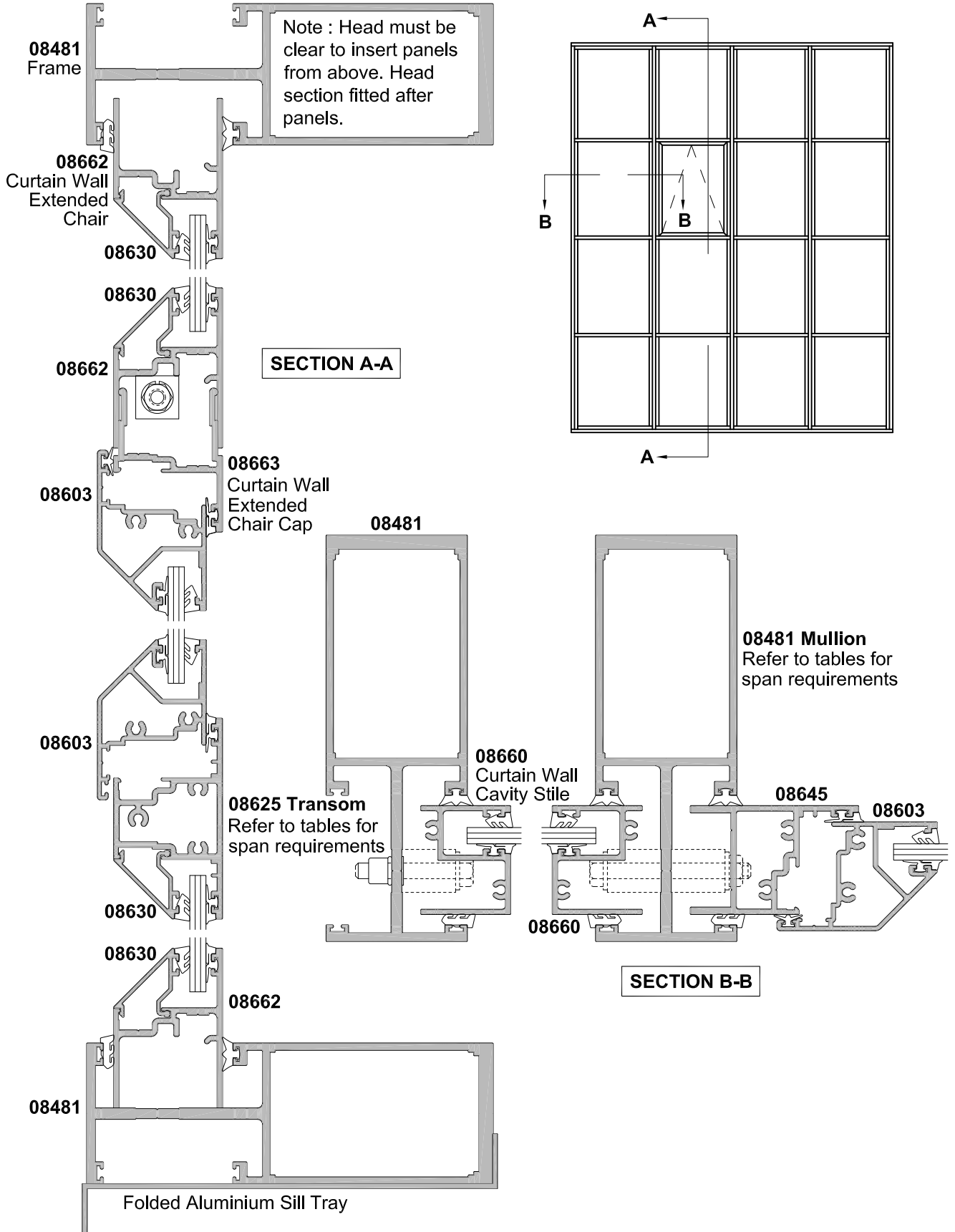


**40MM WINDOW SERIES
CURTAIN WALL
CROSS SECTION**

CAD REF. VC4010-0

DATE
01.06.11

SCALE
1:2



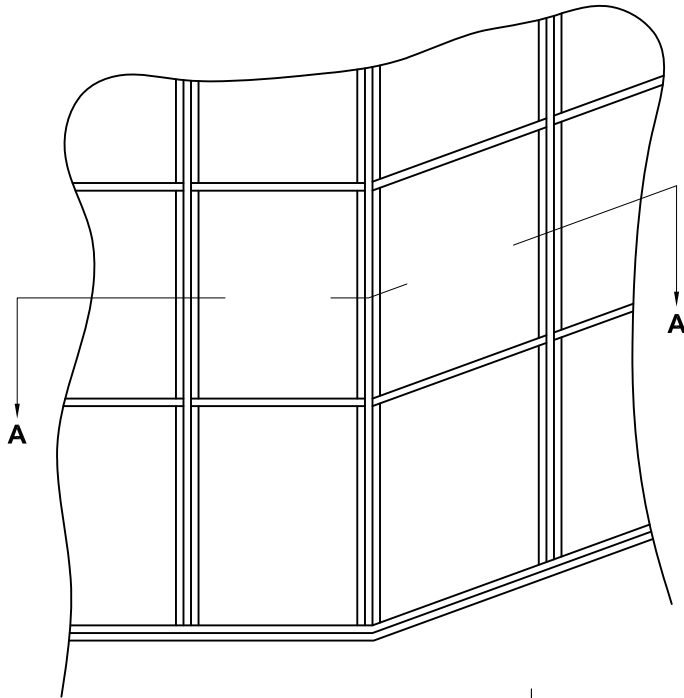


**40MM WINDOW SERIES
CURTAIN WALL
EXTERNAL CORNER
CROSS SECTION**

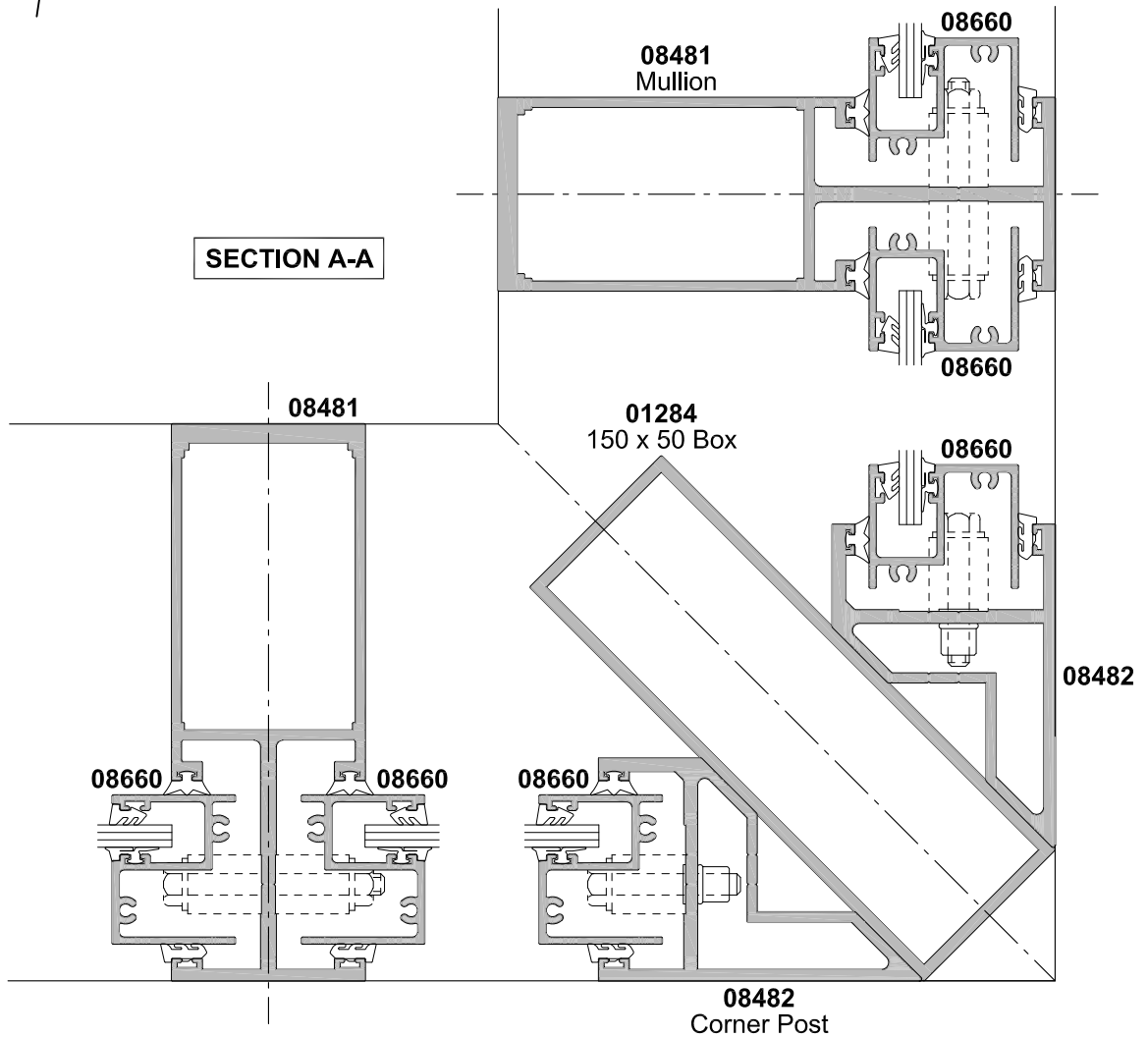
CAD REF. VC4011-0

DATE
01.06.11

SCALE
1:2



SECTION A-A



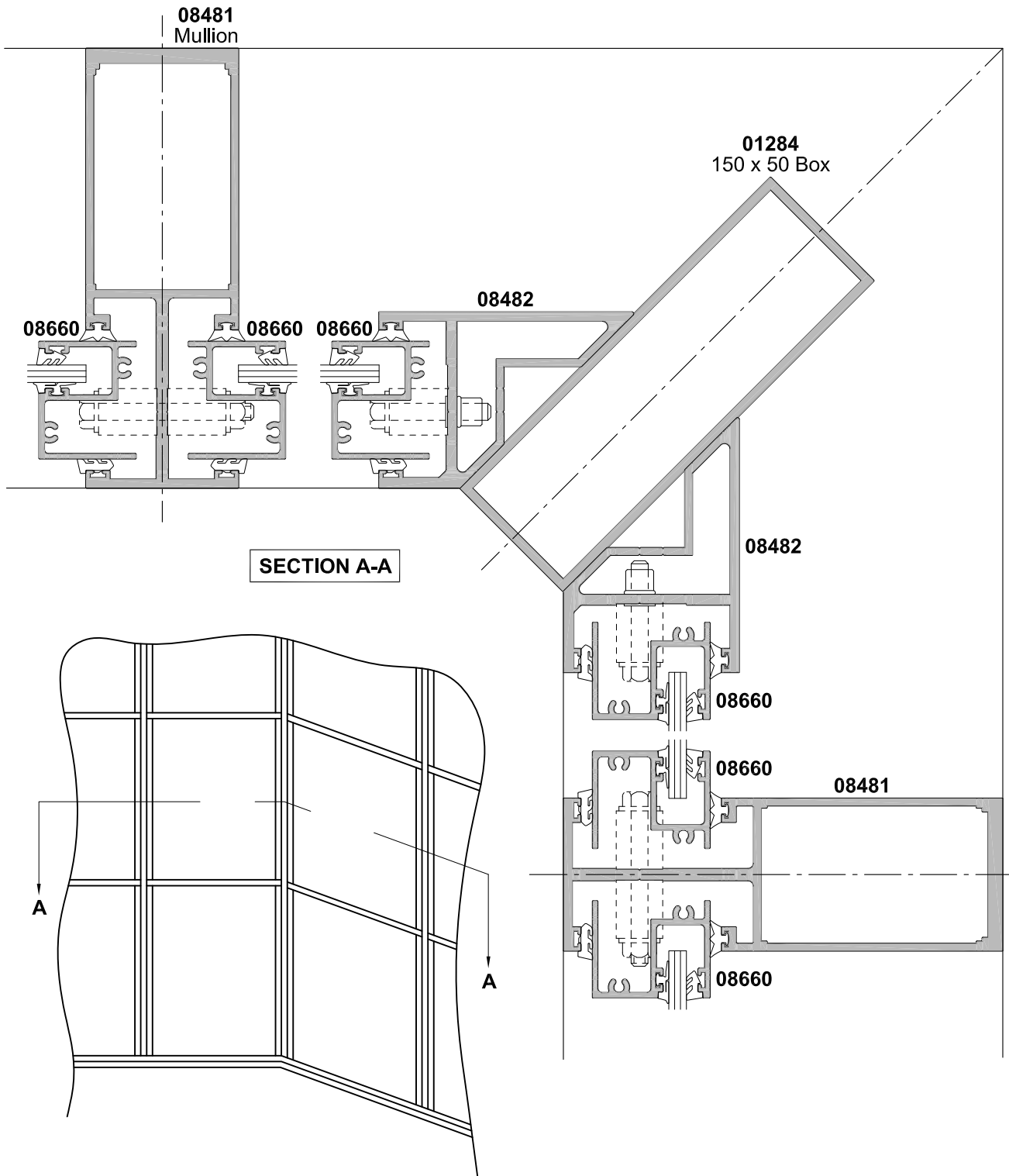


**40MM WINDOW SERIES
CURTAIN WALL
INTERNAL CORNER
CROSS SECTION**

CAD REF. VC4012-0

DATE
01.06.11

SCALE
1:2



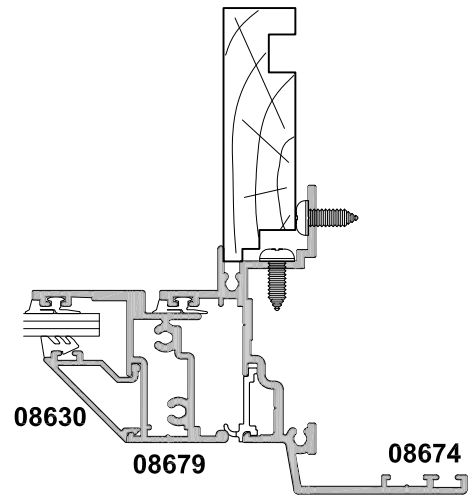
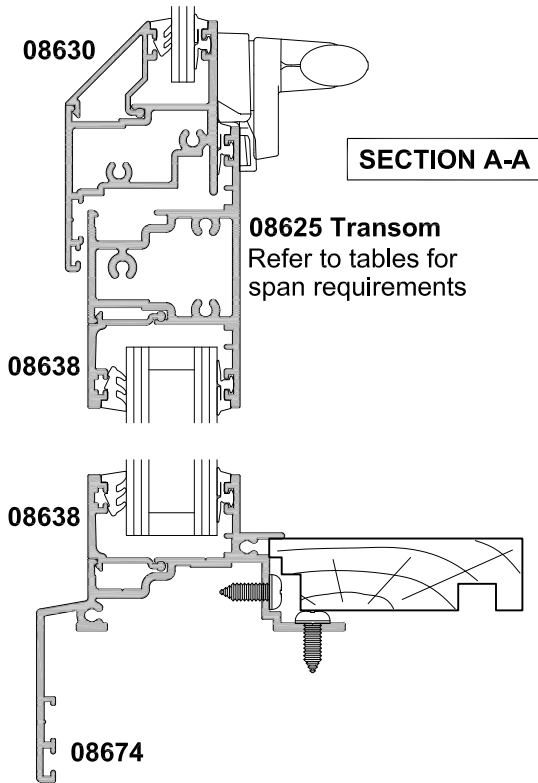
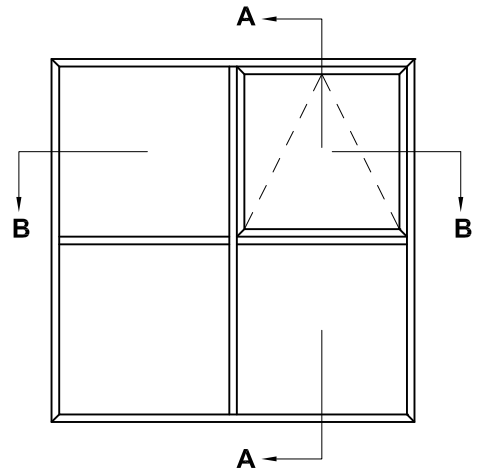
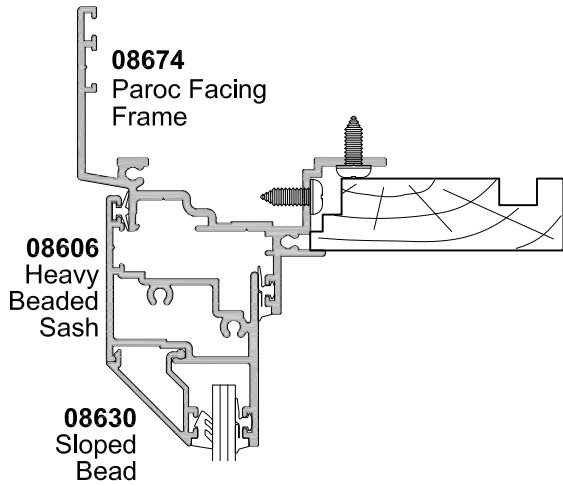


**40MM WINDOW SERIES
INSULATED FACADE
WALL CLADDINGS
CROSS SECTION**

CAD REF. VC4013-0

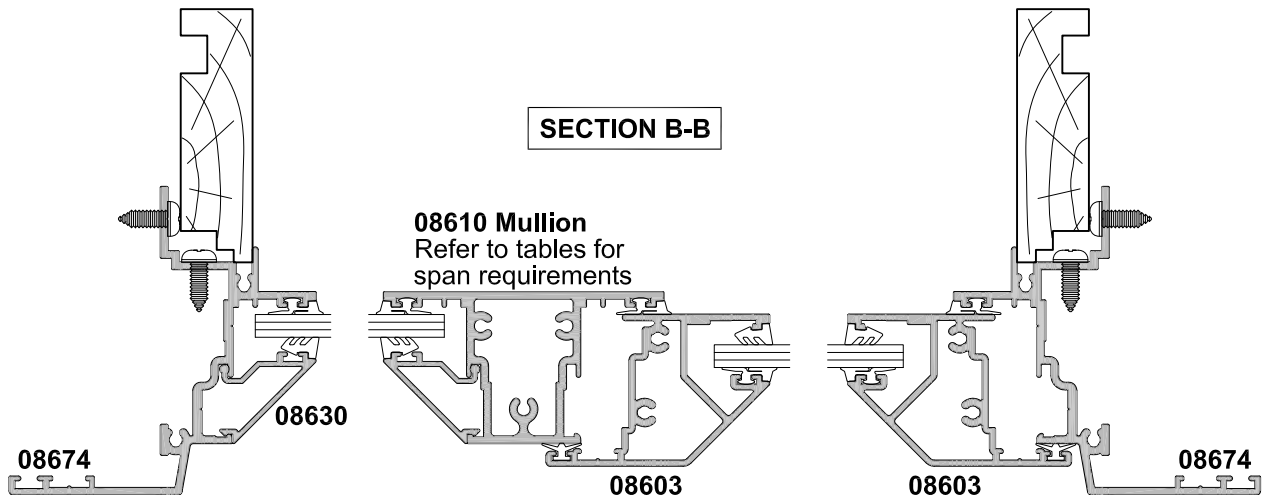
DATE
01.06.11

SCALE
1:2



NON FACING SASH OPTION

Liners fitted after
window installation



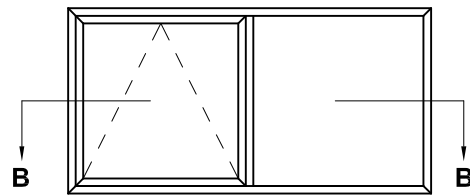
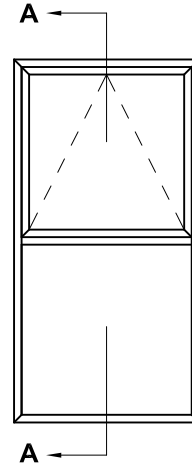
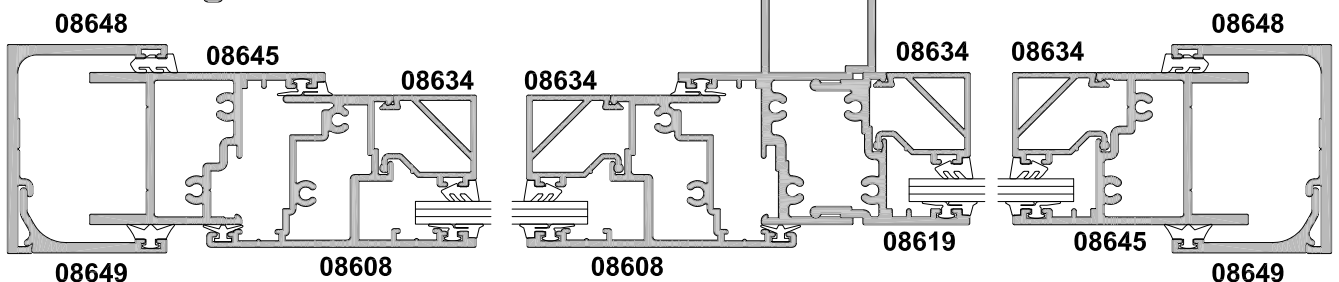
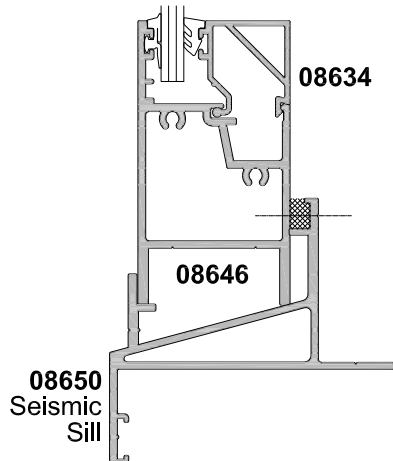
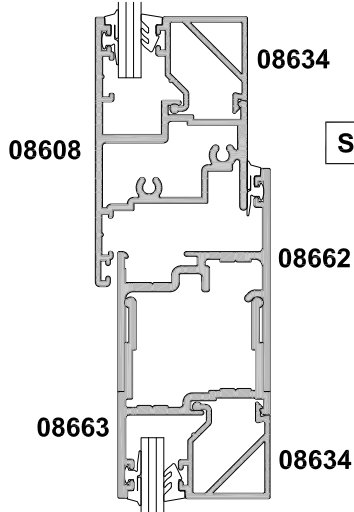
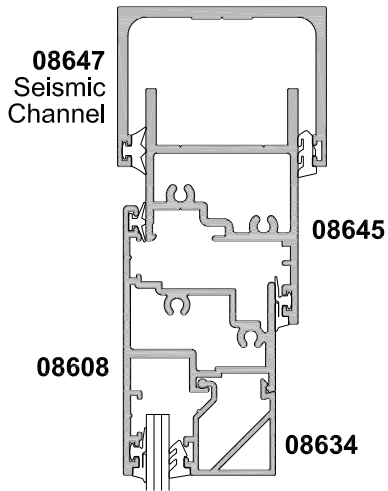


**40MM WINDOW SERIES
INTERNAL GLAZING
CROSS SECTION**

CAD REF. VC4014-0

DATE
01.06.11

SCALE
1:2



NOTE:
Due to drainage problems it is not possible to have an internally glazed fixed light above a sash. Applications are limited for internal glazing and additional sealing is required - Refer to Technical Advisory Services for further details.