

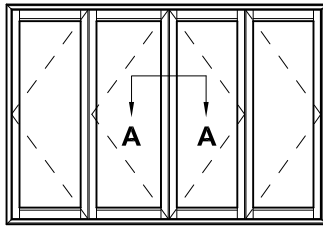


**METRO THERMAL HEART  
BI-FOLD DOOR MEETING STILES  
CROSS SECTION**

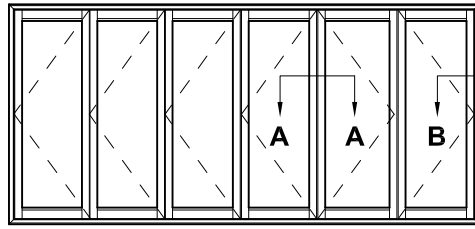
CAD REF. VTBD05-0

DATE  
01.06.11

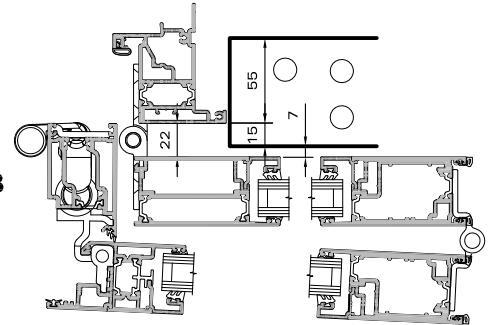
SCALE  
1:2



**2 + 2 Panel**



**2 + 4 Panel**



**SECTION B-B**

Scale: NTS

**LAY-BACK STILE OPTION  
(Two panel sides only)**

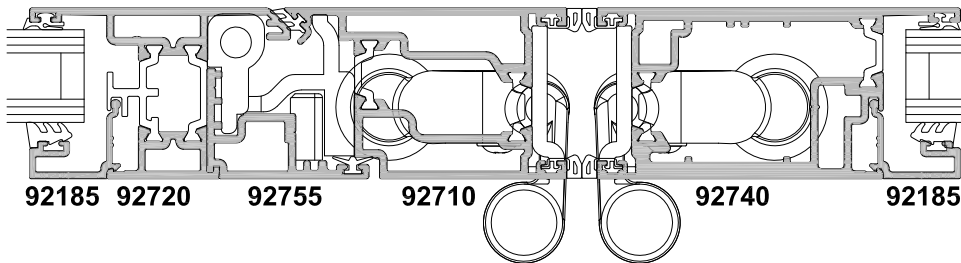
**STANDARD STILE  
(Any side with even  
number of panels)**

Lay-Back Installation Restrictions

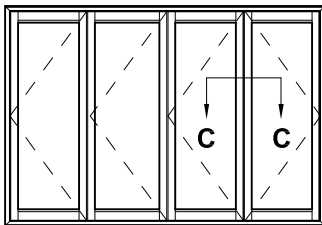
When the Lay-Back panels are opened fully they sit 22mm off the front face of the frame. For the vast majority of cladding options, this will not be an issue, but in the following options it will be:

- Brick Veneer
- Recessed EIFS (plaster clad Poly)
- Concrete Block
- Precast Concrete Panel

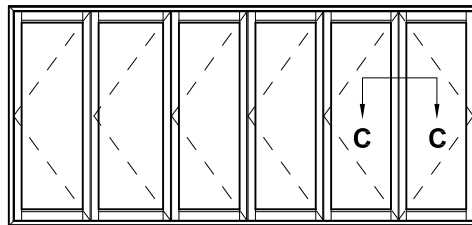
In these Claddings the frame will need to be installed with the facings over the face of the cladding, or recessed no more than 15mm as shown (to provide a minimum 7mm clearance when open).



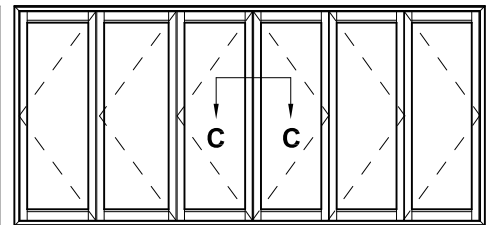
**SECTION A-A**



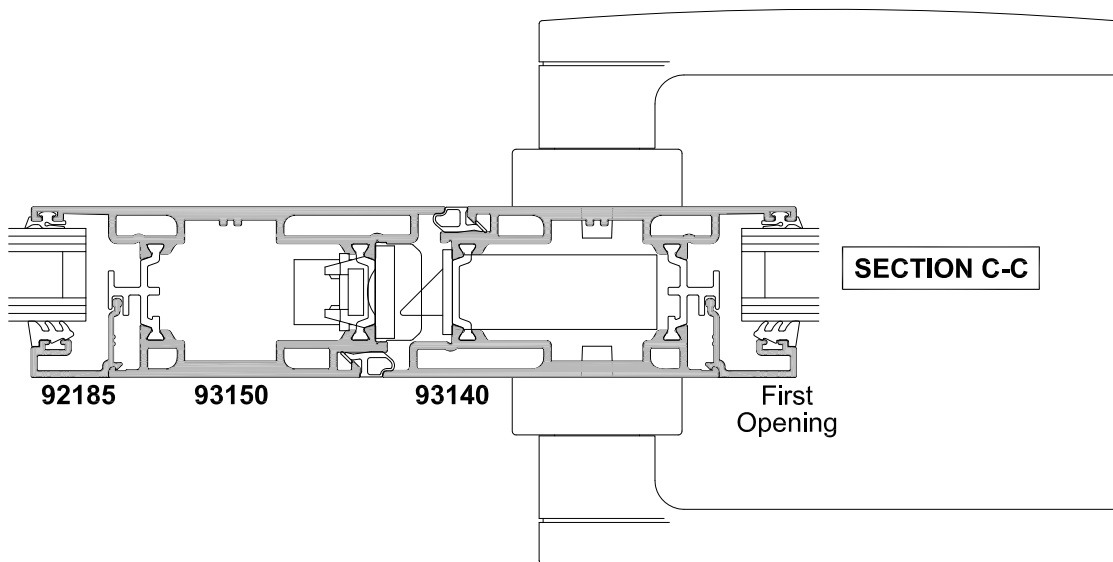
**3 + 1 Panel**



**5 + 1 Panel**



**3 + 3 Panel**



**SECTION C-C**