

H3.1 treated timber Packer to form slope

Metal capping flashing ( Note: not supplied with Ulltraclad© system - contractor to supply as additional flashing)

5° slope minimum

Underlay to provide isolation of metal flashing from treated timber and aluminium

Minimum 5 mm clearance to allow for thermal expansion

flashing depth  
See Table 7 E2/AS1

5 MIN

flashing depth  
See Table 7 E2/AS1

5 MIN

Ulltraclad© UA 5833 Soffit Clip Top  
Alternatively use UA 5832

Metal capping to be fixed with 3M VHB tape  
alternatively fixed with CSK aluminium rivet.  
Colour match touch up paint

Clearance hole in board larger than screw gauge to allow for thermal expansion.

Minimum 5 mm clearance to allow for thermal expansion

Note: Underlay strips to isolate aluminium from treated timber battens  
Refer V00

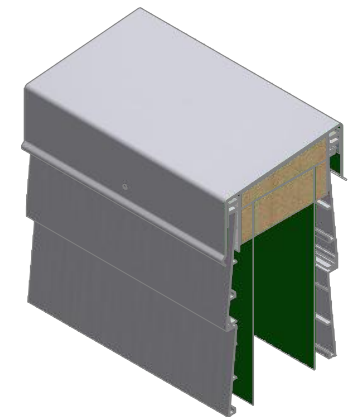
Building underlay continuous over framing

Screw through UA 5831 base at Max 600 mm horizontal centres with 8g x 2" CSK Sq. S/S self tapping screws through batten into top plate

Cavity batten  
Refer V00 Batten Options

Ulltraclad© UA 5059 weatherboards (horizontal) fixed with Locator Clips fixed at Max 600 mm horizontal centres with 8g x 2" CSK Sq S/S self tapping screws through batten into stud

Note: Ensure to alternate spacings of fixings for battens and Locator Clips to avoid risk of splitting batten



**ULLTRA CLAD**<sup>®</sup>  
ALUMINIUM WEATHERBOARDS

ULLTRA CLAD ALUMINIUM CO LTD  
PO Box 98 843 Manukau City Auckland 2241  
118 Wiri Station Road Wiri 2104 New Zealand  
TL 09 262 6262 Ext. 814 Mob 021 541 563

www.ulltraclad.co.nz

© ULLRICH ALUMINIUM - All Rights Reserved

**H22**

Rev : 10

**Parapet on Cavity**  
**UA 5059 TRADITIONAL BOARD**

**HORIZONTAL CAVITY SYSTEM**

Scale: 1 : 2 @ A4 - 2019

Brnz Appraisal #487 2019. (Horizontal)