

Note: Ensure to alternate spacings of fixings for battens and Locator Clips to avoid risk of splitting batten

Fascia board

Sealant over PEF Backing Rod

Screw through UA 7584 base at Max 600 mm horizontal centres with 8g x 2" CSK Sq. S/S self tapping screws through batten into stud

Clearance hole in board larger than screw gauge to allow for thermal expansion

Ulltraclad® UA 5833 Soffit Clip Top

Minimum 5 mm clearance to allow for thermal expansion

When ripping boards to custom widths use treated timber Packers with isolation strips to replicate leg support

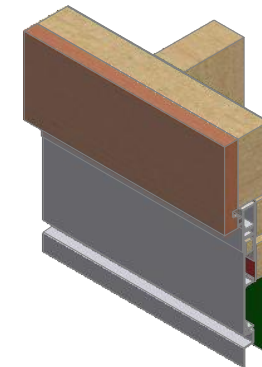
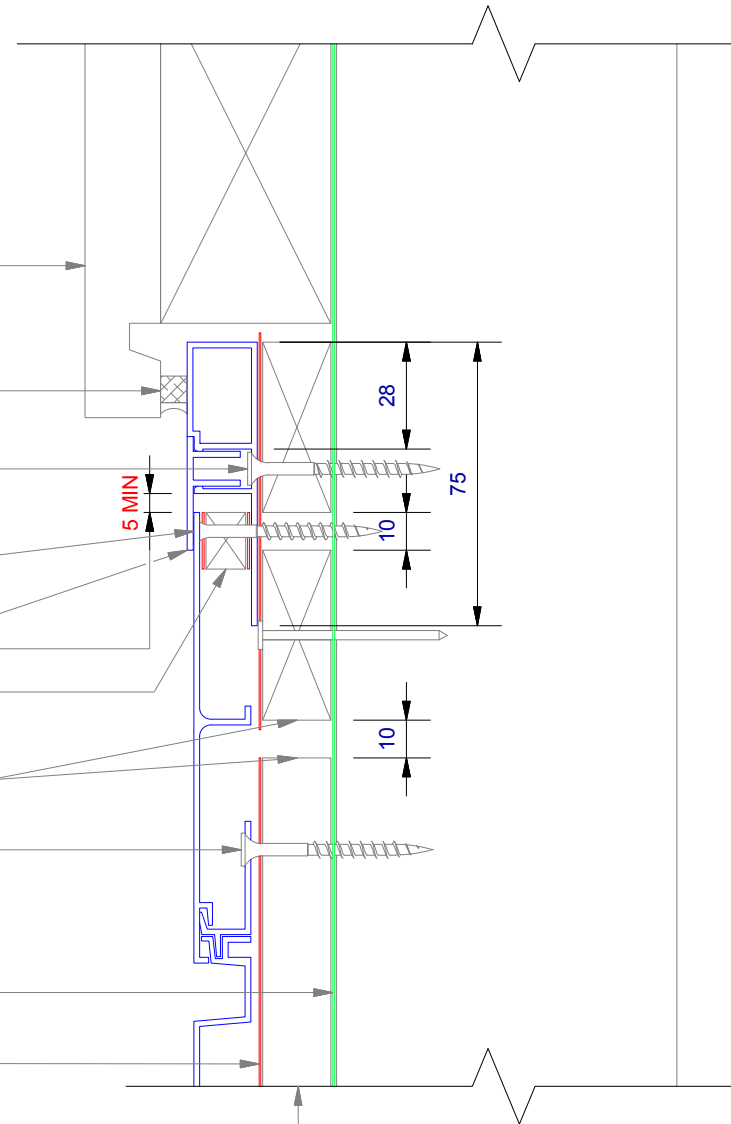
Cavity batten
Refer V00 Batten Options

Ulltraclad® UA 6975 weatherboards (horizontal) fixed with Locator Clips fixed at Max 600 mm horizontal centres with 8g x 2" CSK Sq S/S self tapping screws through batten into stud

Building underlay

Note: Underlay strips to isolate aluminium from treated timber battens
Refer V00

Drained and vented cavity as per NZBC E2/AS1 (section 9.1.8)



ULLTRA CLAD[®]
ALUMINIUM WEATHERBOARDS

ULLRICH ALUMINIUM CO LTD
PO Box 98 843 Manukau City Auckland 2241
118 Wiri Station Road Wiri 2104 New Zealand
TL 09 262 6262 Ext. 814 Mob 021 541 563

www.ulltraclad.co.nz

© ULLRICH ALUMINIUM - All Rights Reserved

H06

Rev : 10

No Soffit Detail on Cavity
UA 6975 SHADOLINE BOARD

HORIZONTAL CAVITY SYSTEM

Scale: 1 : 2 @ A4 - 2019

Branz Appraisal #487 2019. (Horizontal)