

Minimum 5 mm clearance to allow for thermal expansion

Minimum 5 mm clearance to allow for thermal expansion

Ultraclad® UA 6324 Jointer Bottom
fixed to wall frame with 30 x 2.5 mm
clouts at 600 mm centres

Ultraclad® UA 7096 Flat Jointer Top

Ultraclad® UA 4917 weatherboard

Cavity batten
Refer V00 Batten Options

Building underlay

Note: Underlay strips to isolate aluminium
from treated timber battens
Refer V00

Drained and vented cavity as per NZBC
E2/AS1 (section 9.1.8)

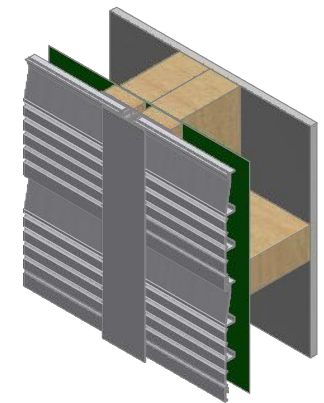
5 MIN 5 MIN

10

Note: Ensure to alternate spacings of
fixings for battens and Locator Clips
to avoid risk of splitting batten

Interior lining

Double studs behind vertical jointer



ULLTRACLAD®
ALUMINIUM WEATHERBOARDS

ULLTRACLAD ALUMINIUM CO LTD
PO Box 98 843 Manukau City Auckland 2241
118 Wiri Station Road Wiri 2104 New Zealand
TL 09 262 6262 Ext. 814 Mob 021 541 563
www.ulltracalad.co.nz
© ULLRICH ALUMINIUM - All Rights Reserved

H03

Rev : 10

Horizontal Wall Jointer
UA 4917 TEE BOARD

HORIZONTAL CAVITY SYSTEM
Scale: 1 : 2 @ A4 - 2019

Brnz Appraisal #487 2019. (Horizontal)