

Minimum 5 mm clearance to allow for thermal expansion

Ultraclad® UA 6324 Jointer Base  
fixed to wall frame with 30 x 2.5 mm  
clouts at 600 mm centres

Cavity batten  
Refer V00 Batten Options

Note: Underlay strips to isolate aluminium  
from treated timber battens  
Refer V00

Minimum 5 mm clearance to allow for thermal expansion

Ultraclad® UA 7096 Flat Jointer Top

Ultraclad® UA 6975 weatherboard (horizontal)

Building underlay

Drained and vented cavity as per NZBC  
E2/AS1 ( section 9.1.8)

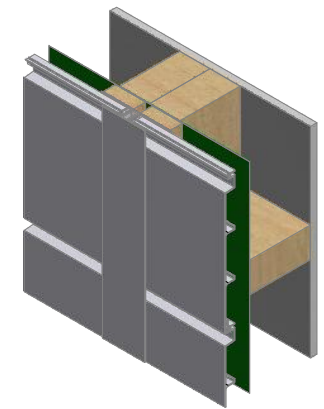
5 MIN 5 MIN

10

Note: Ensure to alternate spacings of  
fixings for battens and Locator Clips  
to avoid risk of splitting batten

Interior lining

Double studs behind vertical jointer



**ULLTRACLAD**®  
ALUMINIUM WEATHERBOARDS

ULLRICH ALUMINIUM CO LTD  
PO Box 98 843 Manukau City Auckland 2241  
118 Wiri Station Road Wiri 2104 New Zealand  
TL 09 262 6262 Ext. 814 Mob 021 541 563  
www.ulltraclad.co.nz  
© ULLRICH ALUMINIUM - All Rights Reserved

**H03**

Rev : 10

**Horizontal Wall Jointer**  
**UA 6975 SHADOLINE BOARD**

**HORIZONTAL CAVITY SYSTEM**  
Scale: 1 : 2 @ A4 - 2019

Brnz Appraisal #487 2019. (Horizontal)