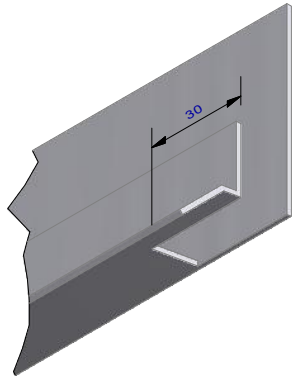


Ultraclad® UA 4533 Head Starter 5 mm diameter drainage holes drilled through base of Head Starter at 300 mm centres

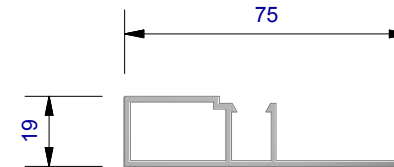
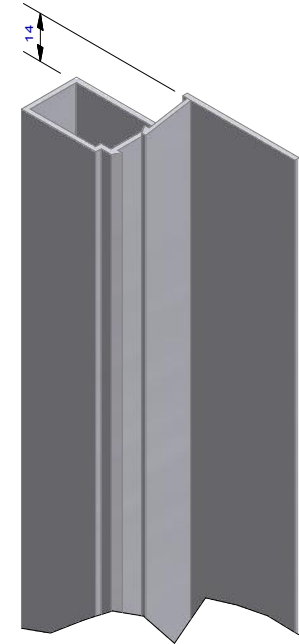


**IMPORTANT:**  
 Sizes shown are indicative only!  
 Contractor to confirm onsite as  
 joinery suites may vary.



Ultraclad® UA 4533 Head Starter

Ultraclad® UA 7584 Jamb Flashing



**ULLTRACLAD**®  
 ALUMINIUM WEATHERBOARDS

ULLRICH ALUMINIUM CO LTD  
 PO Box 98 843 Manukau City Auckland 2241  
 118 Wiri Station Road Wiri 2104 New Zealand  
 TL 09 262 6262 Ext. 814 Mob 021 541 563  
 www.ulltraclad.co.nz  
 © ULLRICH ALUMINIUM - All Rights Reserved

**V14**

Rev : 10

**Head - Jamb Notching Details**  
 UA 7922 SHIPLAP BOARD

**VERTICAL CAVITY SYSTEM**  
 Scale: 1 : 2 @ A4 - 2019

Brnz Appraisal #796 2019. (Vertical)