

Building underlay continuous behind head flashing and into opening

Ulltraclad® UA 7922 weatherboards fixed with Locator Clips fixed at Max 600 mm vertical centres with 8g x 2" CSK Sq S/S self tapping screws through batten into dwang / nog

Flashing tape

Note: Underlay strips to isolate aluminium from treated timber battens Refer V00

Fixed to lintel at 300 mm centres with 8g x 2" CSK Sq. S/S self tapping screws

Ulltraclad® Cavity Vent Strip Alternatively use PVC

Ulltraclad® UA 4533 Head Starter 5 mm diameter drainage holes drilled through base of Head Starter at 300 mm centres

Sealant between head flashing and window flange in very high wind zone and above

Window head flashing (15° slope) folded stop end. (Note: not supplied with Ulltraclad® system - contractor to supply as additional flashing)

Window frame (Note: Refer to window manufacturer for method of supporting and fixing)

Interior lining

50 mm Tape cover as per 4.3.11 of E2/AS1

40 mm MIN recommended flashing upstand

NOTE: Extra high wind zone head flashing must be 65 mm and hemmed

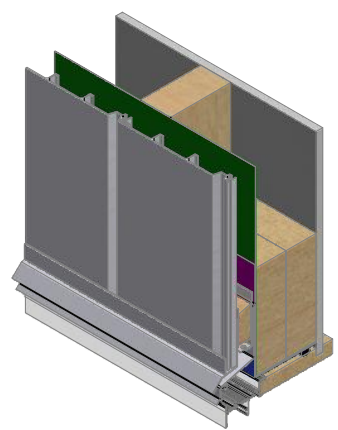
Flexible flashing tape at corners

Air seal to perimeter of trim cavity with expandable foam or sealant as per section 9.1.6 of E2/AS1

7.5 mm nominal gap

Window liner

Note: Ensure to alternate spacings of fixings for battens and Locator Clips to avoid risk of splitting batten



**ULLTRACLAD®**  
ALUMINIUM WEATHERBOARDS

ULLRICH ALUMINIUM CO LTD  
PO Box 98 843 Manukau City Auckland 2241  
118 Wiri Station Road Wiri 2104 New Zealand  
TL 09 262 6262 Ext. 814 Mob 021 541 563  
www.ulltraclad.co.nz  
© ULLRICH ALUMINIUM - All Rights Reserved

**V08**  
Rev : 10

**Window Head on Cavity**  
**UA 7922 SHIPLAP BOARD**

**VERTICAL CAVITY SYSTEM**  
Scale: 1 : 2 @ A4 - 2019

Brnz Appraisal #796 2019. (Vertical)