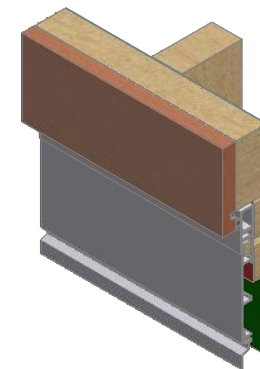
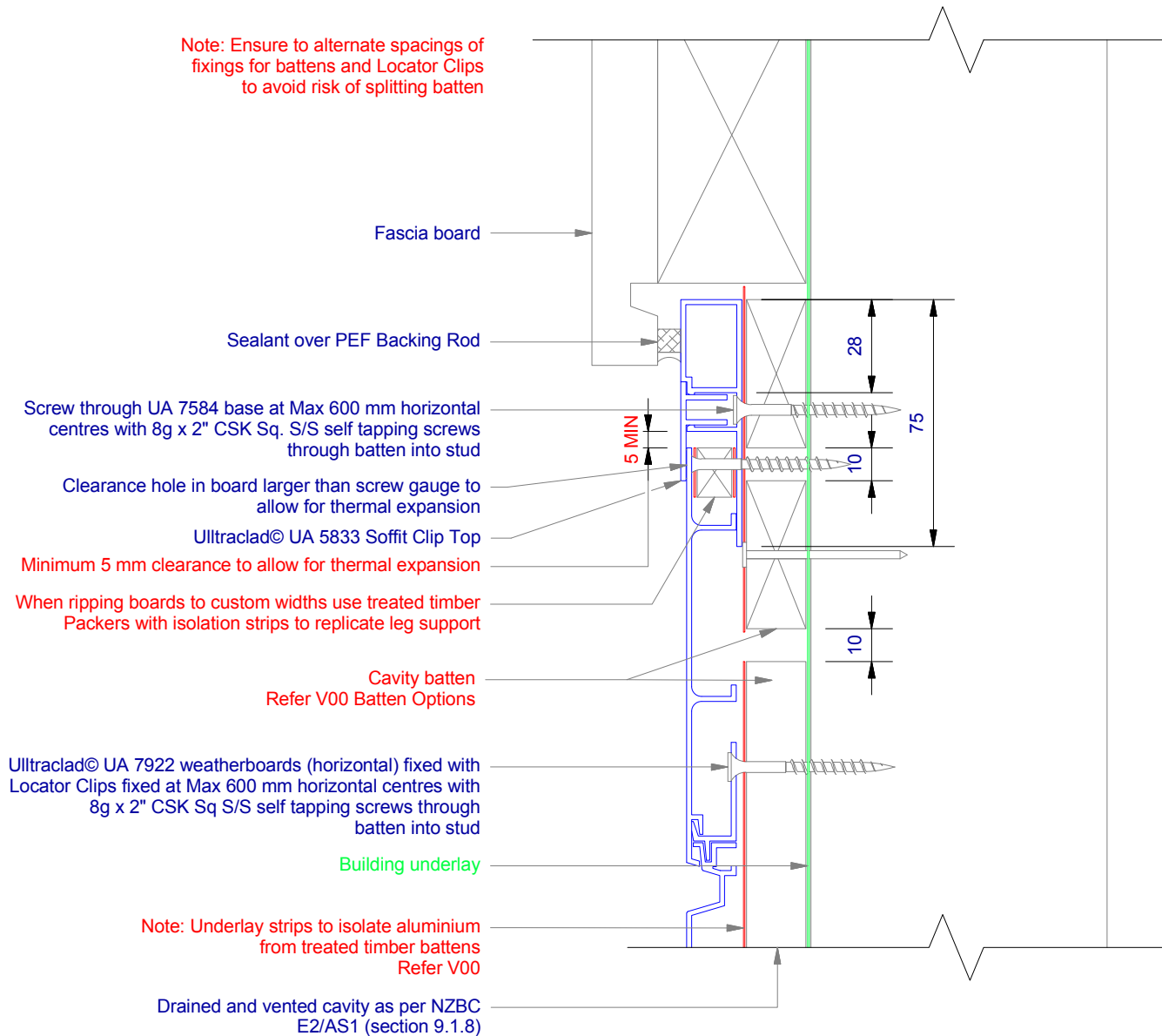


Note: Ensure to alternate spacings of fixings for battens and Locator Clips to avoid risk of splitting batten



**ULLTRACLAD**<sup>®</sup>  
ALUMINIUM WEATHERBOARDS

ULLRICH ALUMINIUM CO LTD  
PO Box 98 843 Manukau City Auckland 2241  
118 Wiri Station Road Wiri 2104 New Zealand  
TL 09 262 6262 Ext. 814 Mob 021 541 563  
www.ulltraclad.co.nz  
© ULLRICH ALUMINIUM - All Rights Reserved

**H06**

Rev : 10

**No Soffit Detail on Cavity**  
**UA 7922 SHIPLAP BOARD**

**HORIZONTAL CAVITY SYSTEM**  
Scale: 1 : 2 @ A4 - 2019

Brnz Appraisal #487 2019. (Horizontal)