

Soffit lining

Ulltraclad® UA 5833 Soffit ClipTop

Minimum 5 mm clearance to allow for thermal expansion

Screw through UA 5831 base at Max 600 mm horizontal centres with 8g x 2" CSK Sq. S/S self tapping screws through batten into stud

Cavity battens  
Refer V00 Batten Options

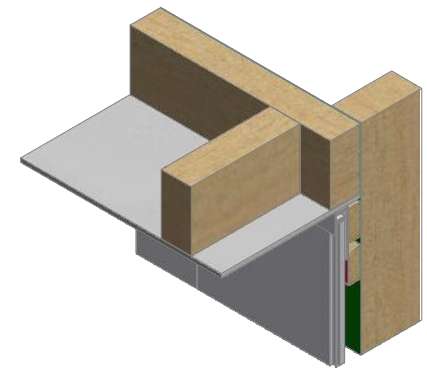
Note: Underlay strips to isolate aluminium from treated timber battens  
Refer V00

Building Underlay

Ulltraclad® UA 7401 weatherboards

Drained and vented cavity as per NZBC E2/AS1 (Section 9.1.8)

Note: Ensure to alternate spacings of fixings for battens and Locator Clips to avoid risk of splitting batten



**ULLTRACLAD**<sup>®</sup>  
ALUMINIUM WEATHERBOARDS

ULLRICH ALUMINIUM CO LTD  
PO Box 98 843 Manukau City Auckland 2241  
118 Wiri Station Road Wiri 2104 New Zealand  
TL 09 262 6262 Ext. 814 Mob 021 541 563  
www.ulltraclad.co.nz  
© ULLRICH ALUMINIUM - All Rights Reserved

**V06**  
Rev : 10

**Soffit Detail on Cavity**  
**UA 7401 INFINITY BOARD**

**VERTICAL CAVITY SYSTEM**  
Scale: 1 : 2 @ A4 - 2019

Brnz Appraisal #796 2019. (Vertical)