



Thermakraft™

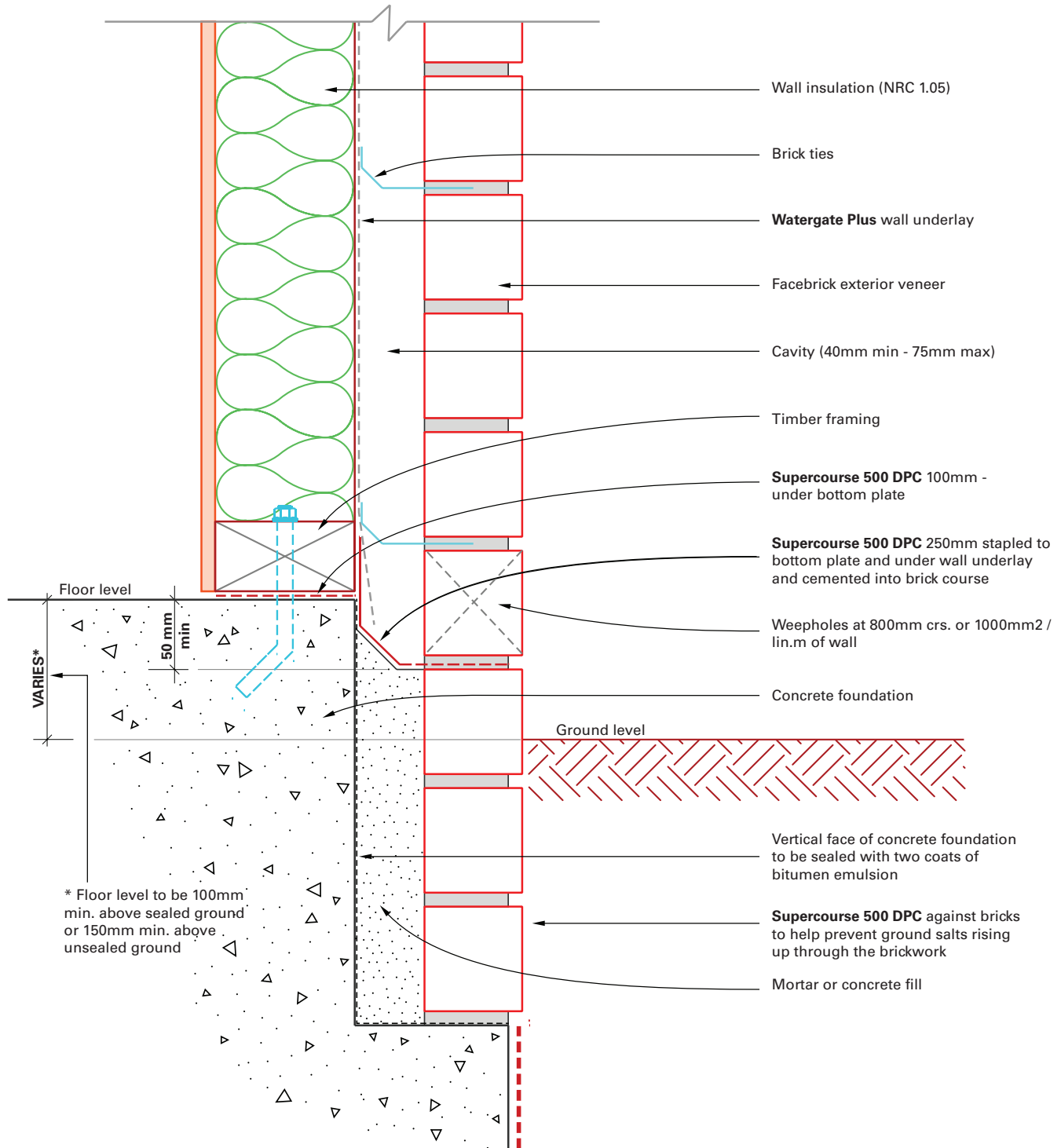
SUPERCOURSE 500

This guide highlights the application of Supercourse 500 DPC in Footing and Window builds. Supercourse 500 is BRANZ Appraised.

BUILDING AREA	Page	Thermakraft Product
Footing Detail – Brick Veneer Below Ground	B1	- Watergate Plus - Supercourse 500 DPC
Footing Detail – Brick Veneer Above Group	B2	- Watergate Plus - Supercourse 500
Footing Detail – Brick Veneer	B7	- Watergate Plus - Supercourse 500 DPC - Thermathene
Footing Detail – Brick Veneer	B8	- Watergate Plus - Supercourse 500 DPC
Window Sill	B3	- Watergate Plus - Supercourse 500 DPC - Aluband - Corner Moulded Piece
Window Head / Door Head	B3	- Watergate Plus - Aluband - Corner Moulded Piece
Window Head – Soldier Course	B4	- Watergate Plus - Supercourse 500 DPC - Aluband
Window Sill	B4	- Watergate Plus - Supercourse 500 DPC - Aluband
Window Head – Concrete / Stone Lintel	B5	- Watergate Plus - Supercourse 500 DPC - Aluband
Window Head – Fastwall Lintel	B5	- Watergate Plus - Supercourse 500 DPC - Aluband
Window Jamb	B6	- Watergate Plus - Supercourse 500 DPC - Aluband
Window Jamb	B6	- Watergate Plus - Supercourse 500 DPC - Aluband

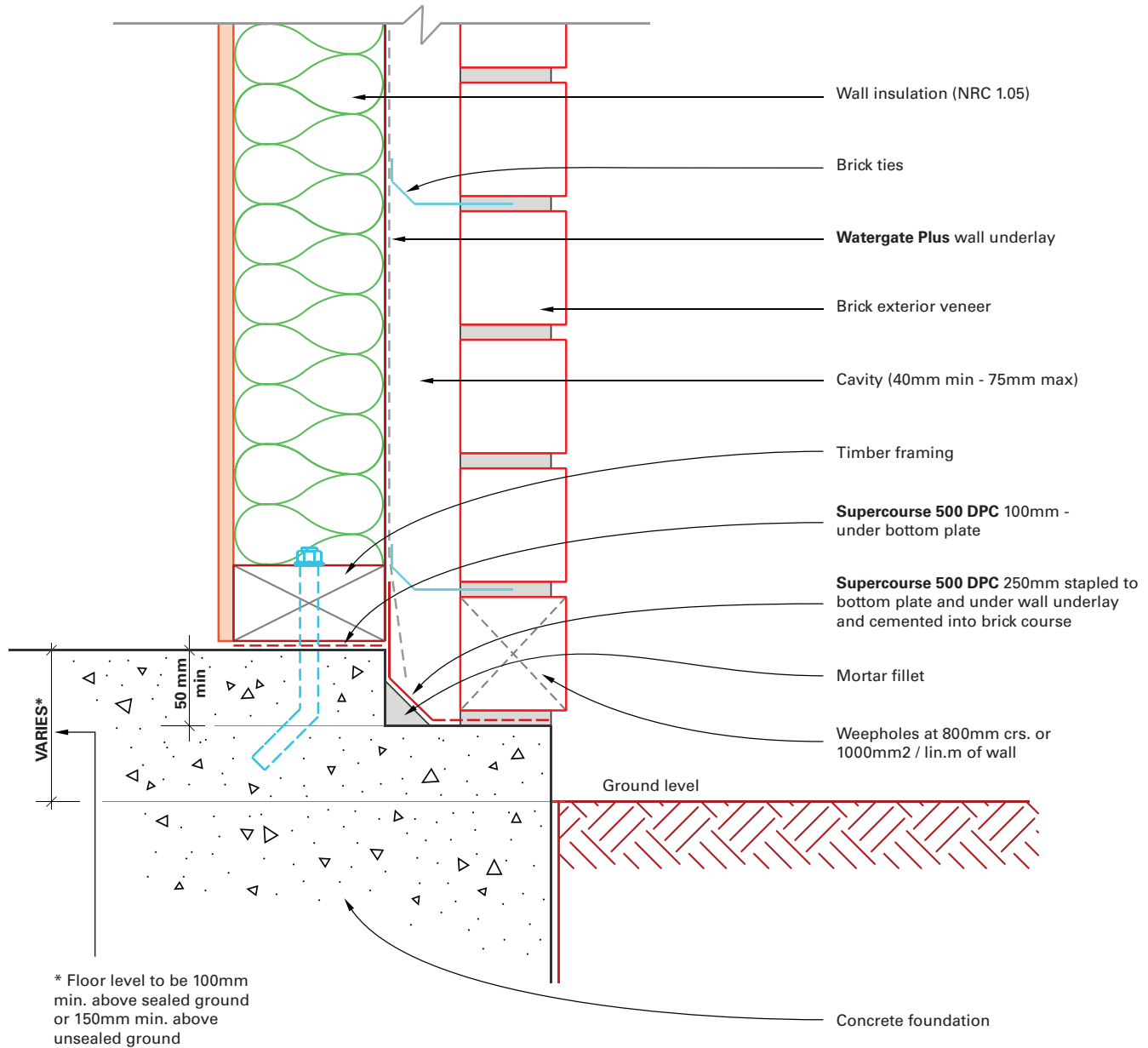
APPLICATION GUIDE



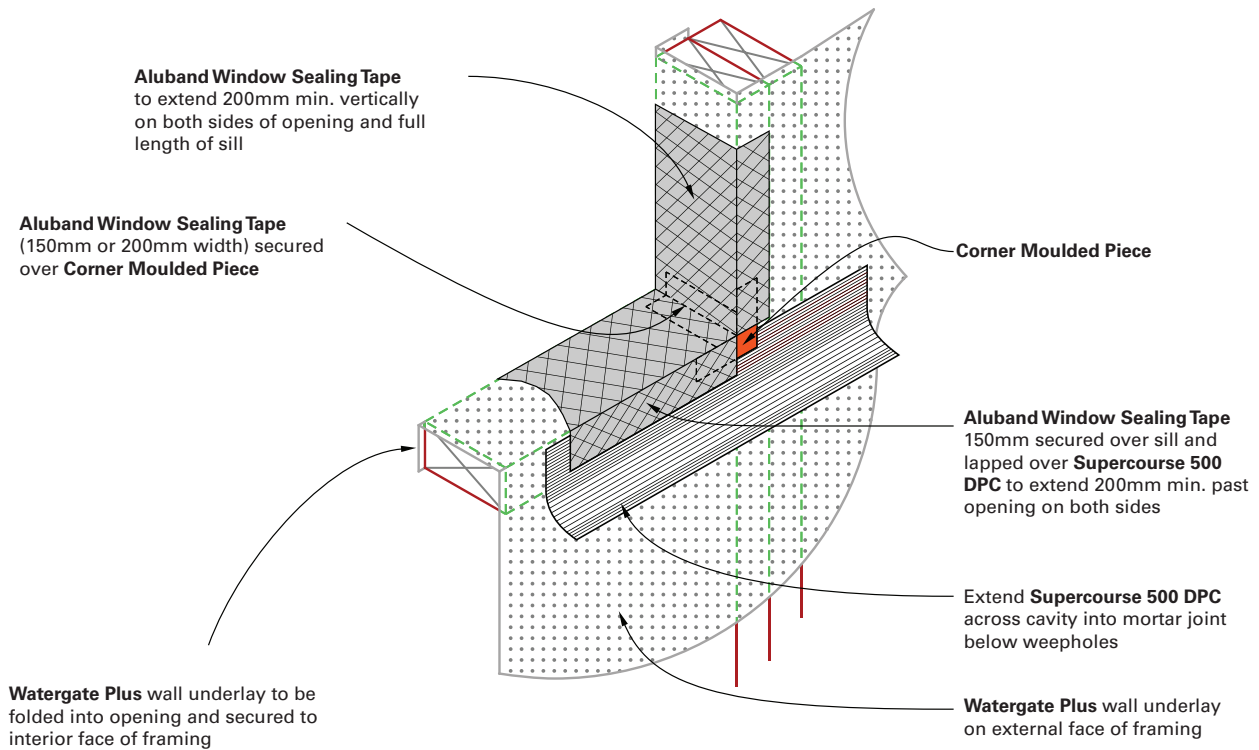


Typical Footing Detail Brick Veneer Below Ground

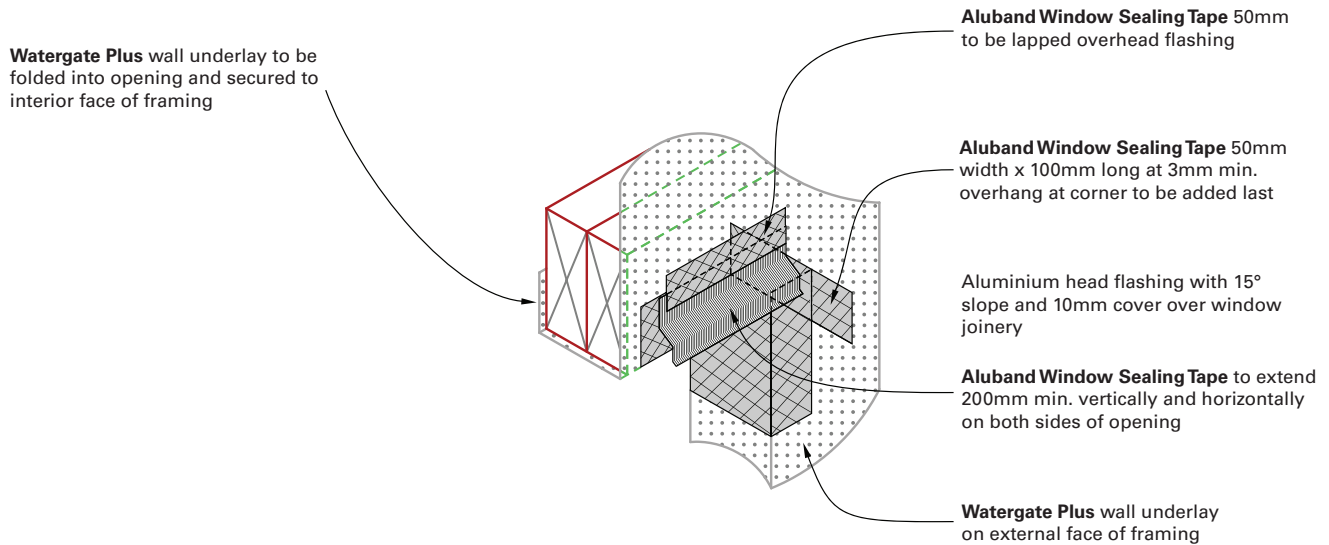
B1



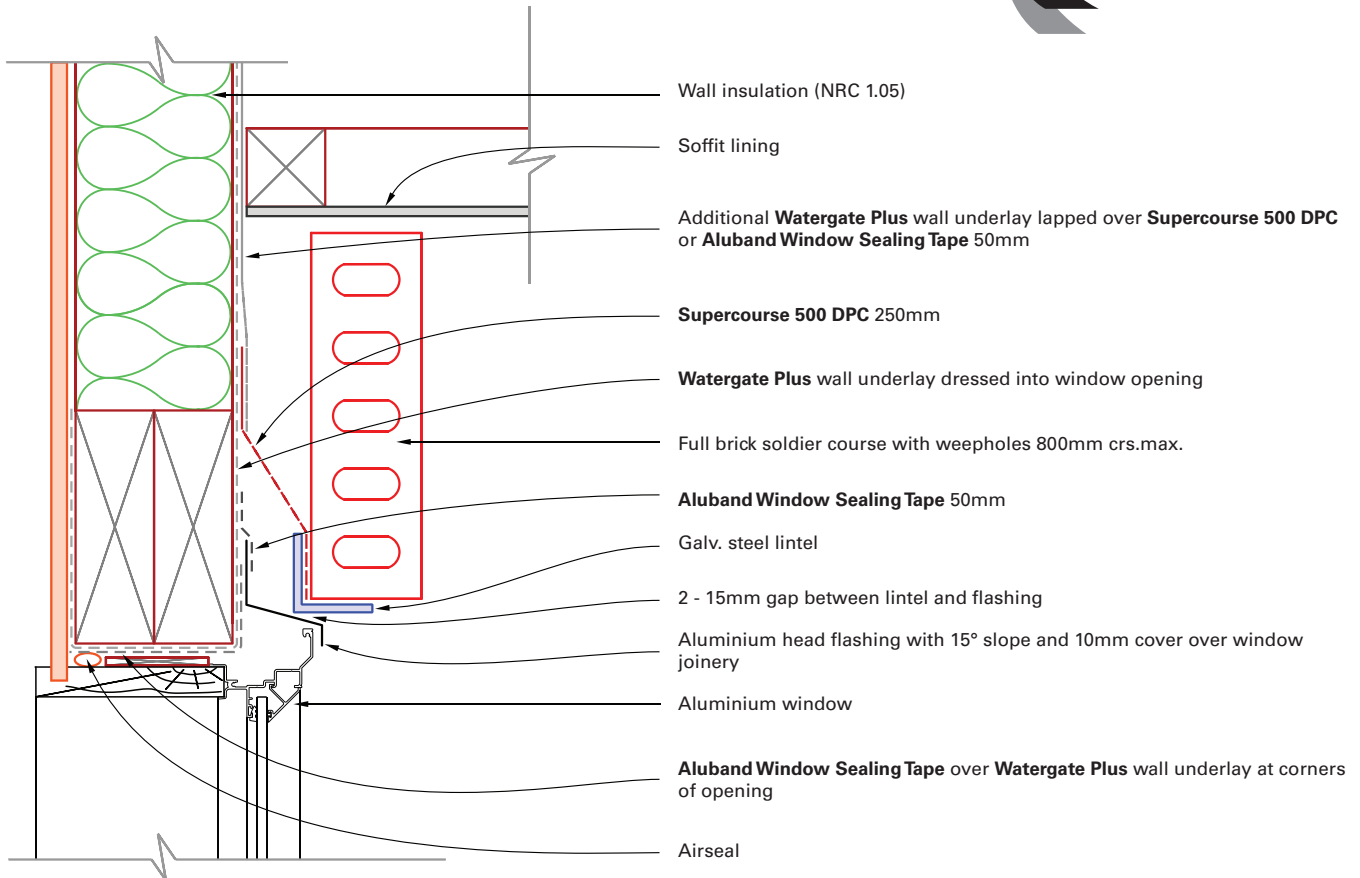
Typical Footing Detail Brick Veneer Above Ground



Window Sill

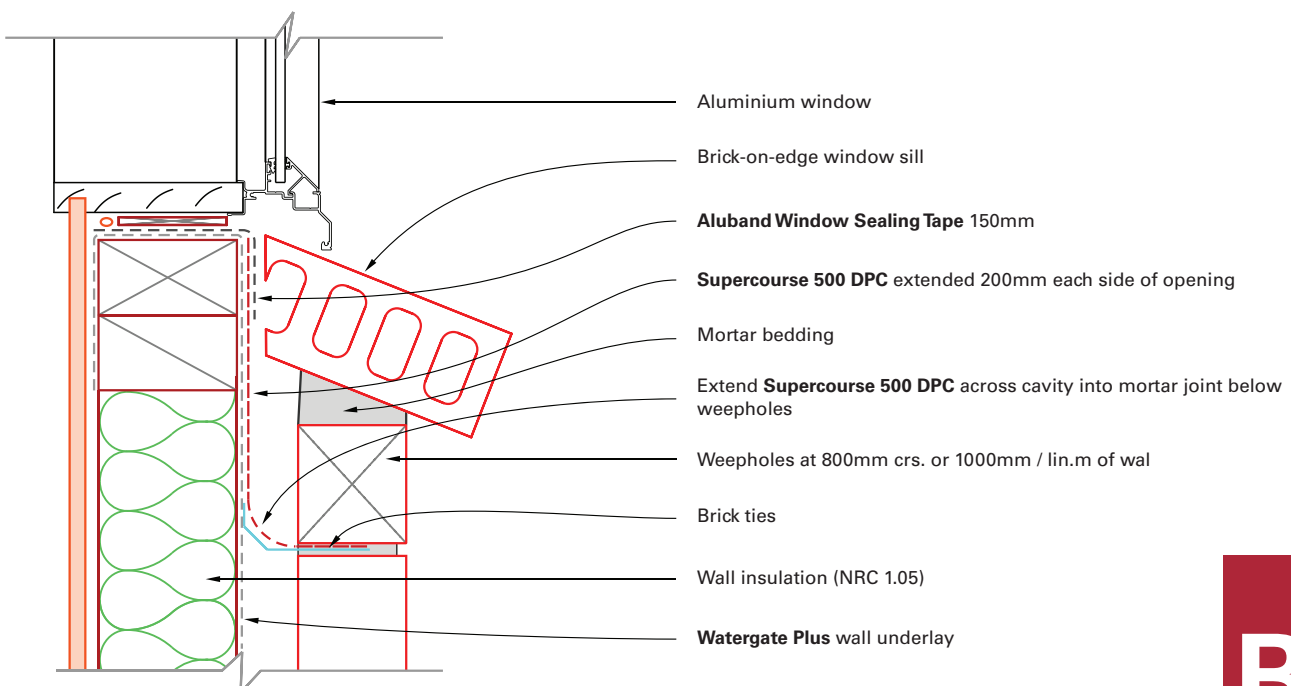


Window / Door Head

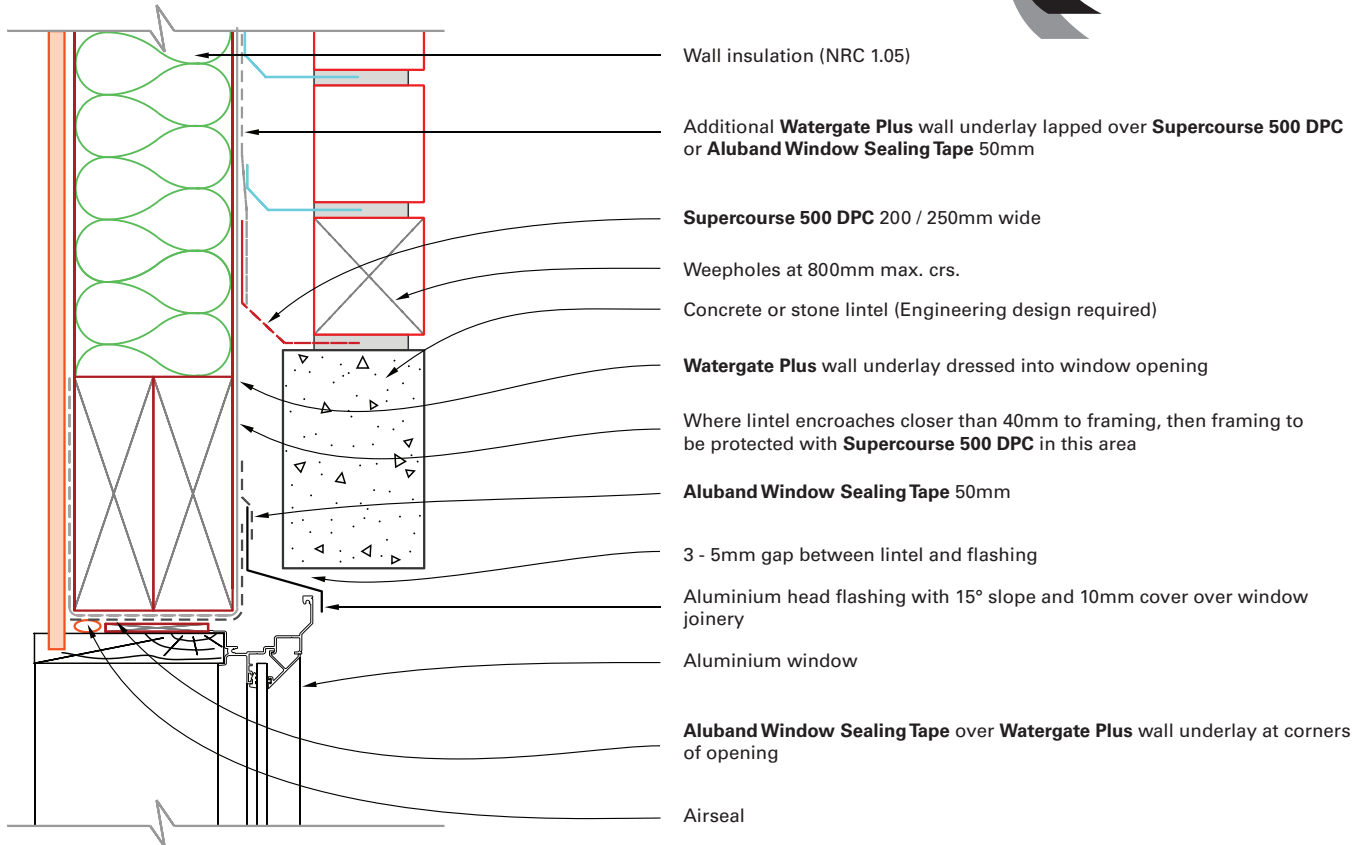


Window Head (Soldier Course)

Aluband Window Sealing Tape to be used in conjunction with **Supercourse 500 DPC** (BRANZ Appraised)

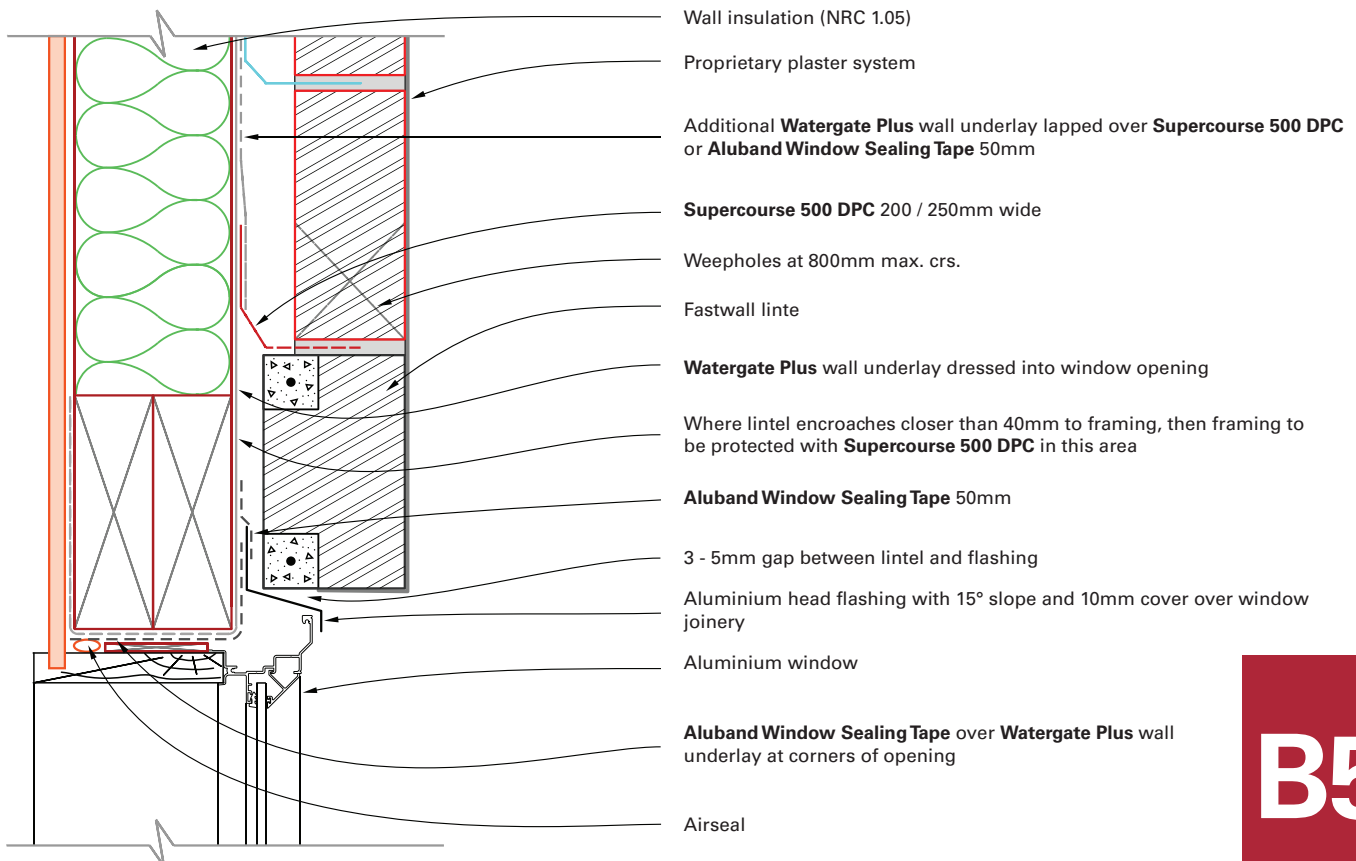


Window Sill

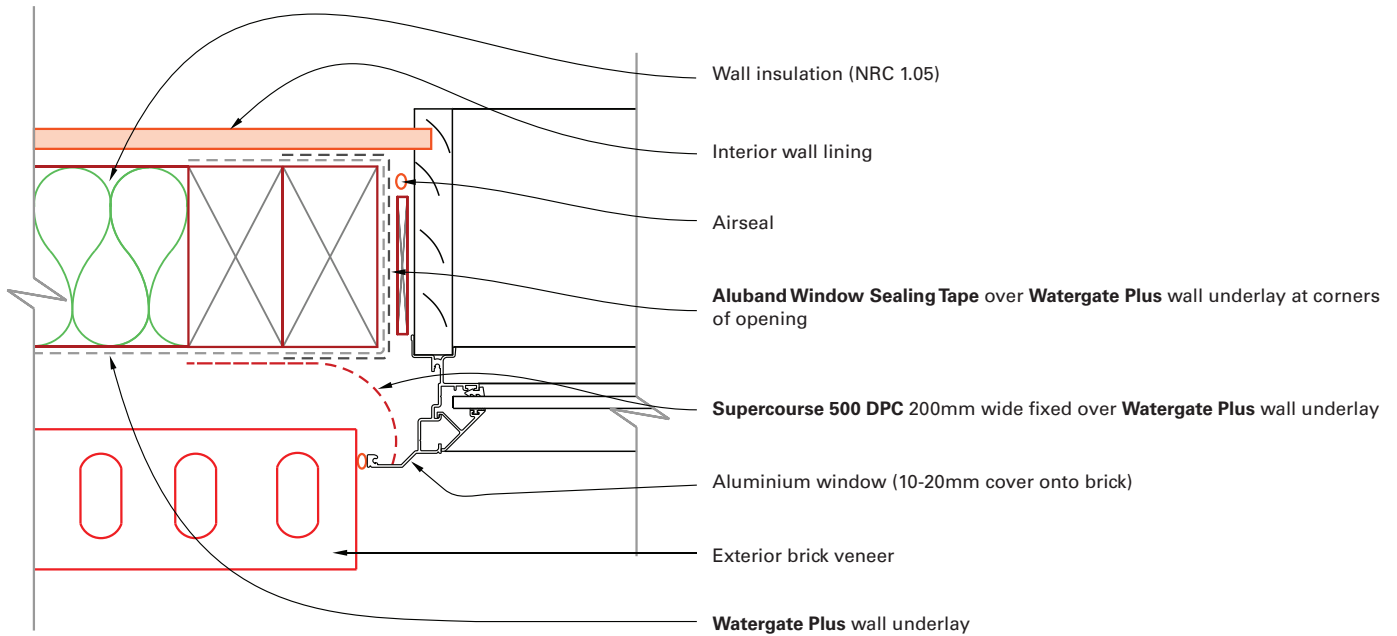


Window Head (Concrete / Stone Lintel)

Aluband Window Sealing Tape to be used in conjunction with **Supercourse 500 DPC** (BRANZ Appraised)

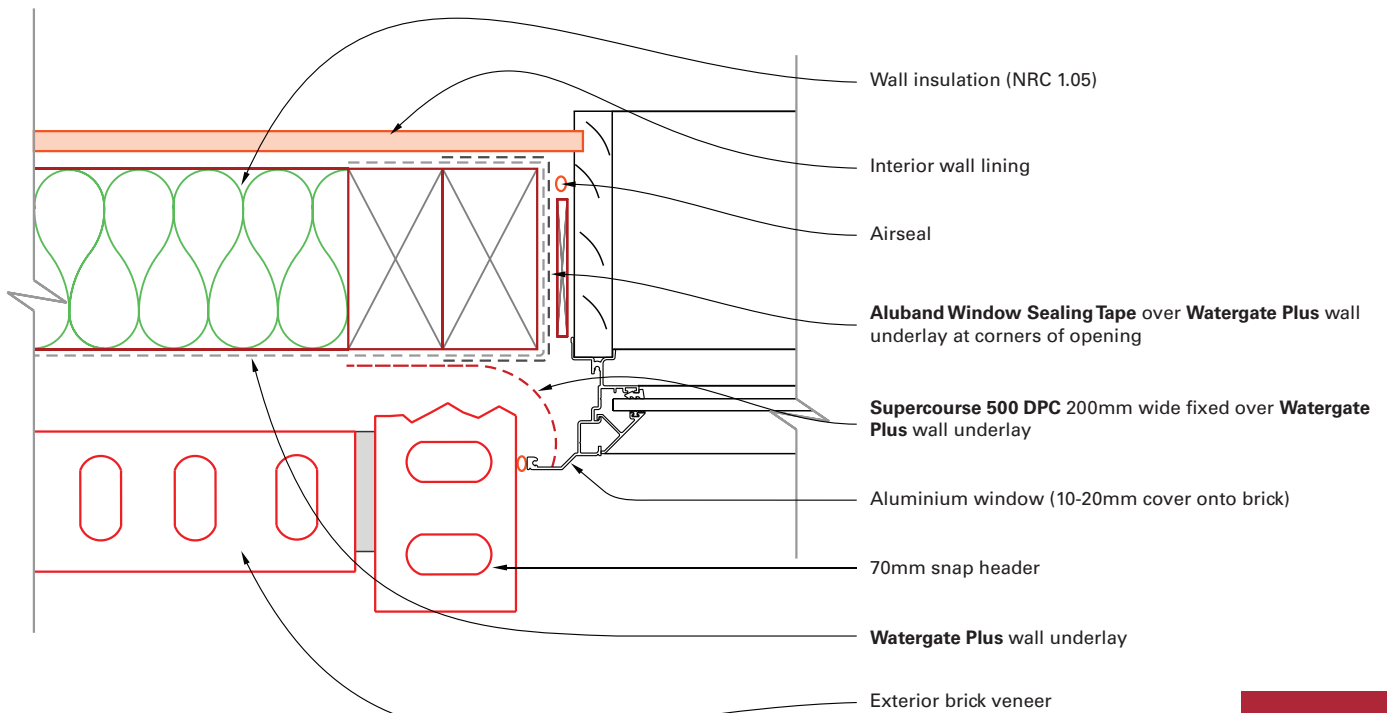


Window Head (Fastwall Lintel)



Window Jamb

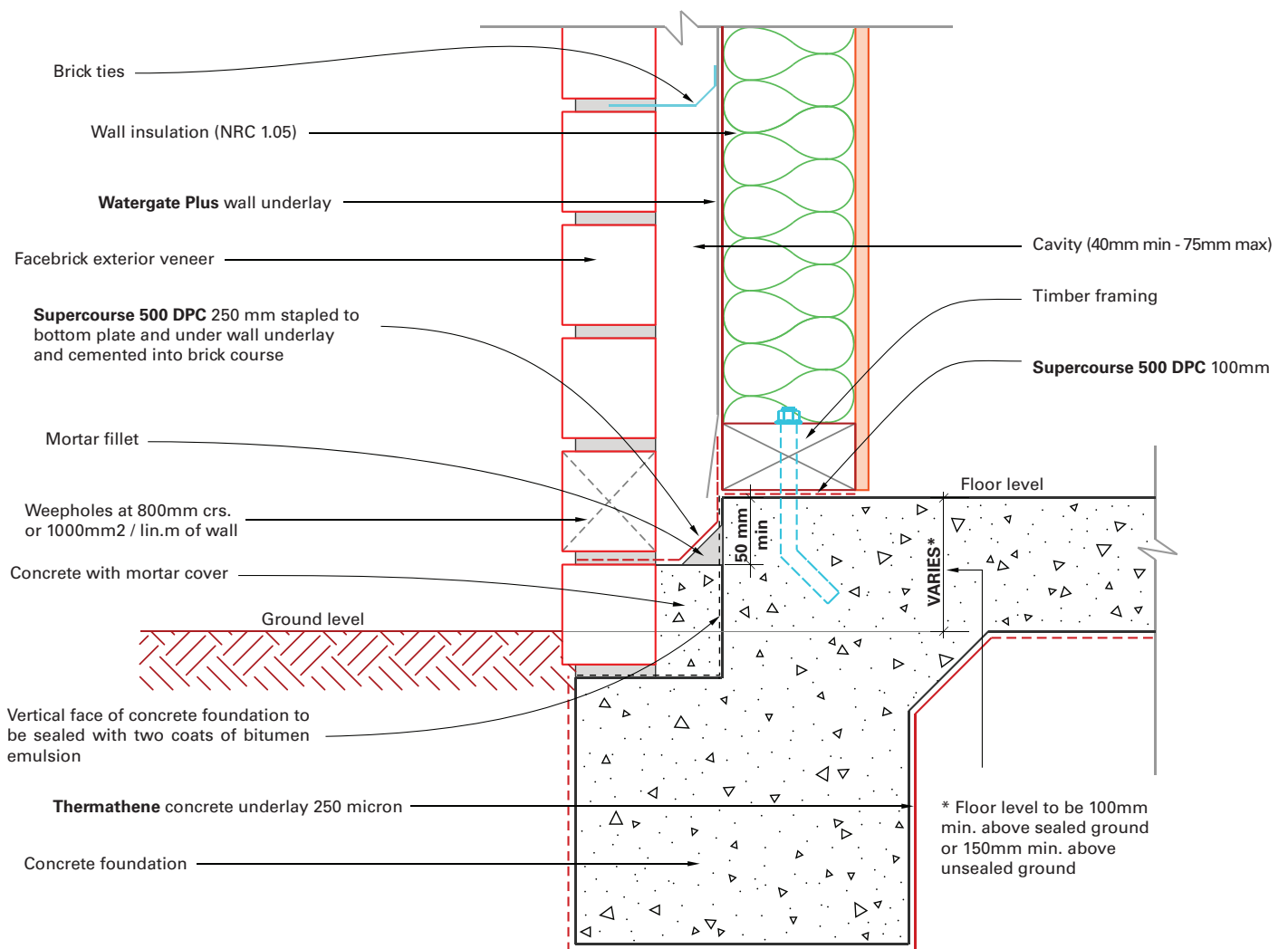
Aluband Window Sealing Tape to be used in conjunction with **Supercourse 500 DPC** (BRANZ Appraised)



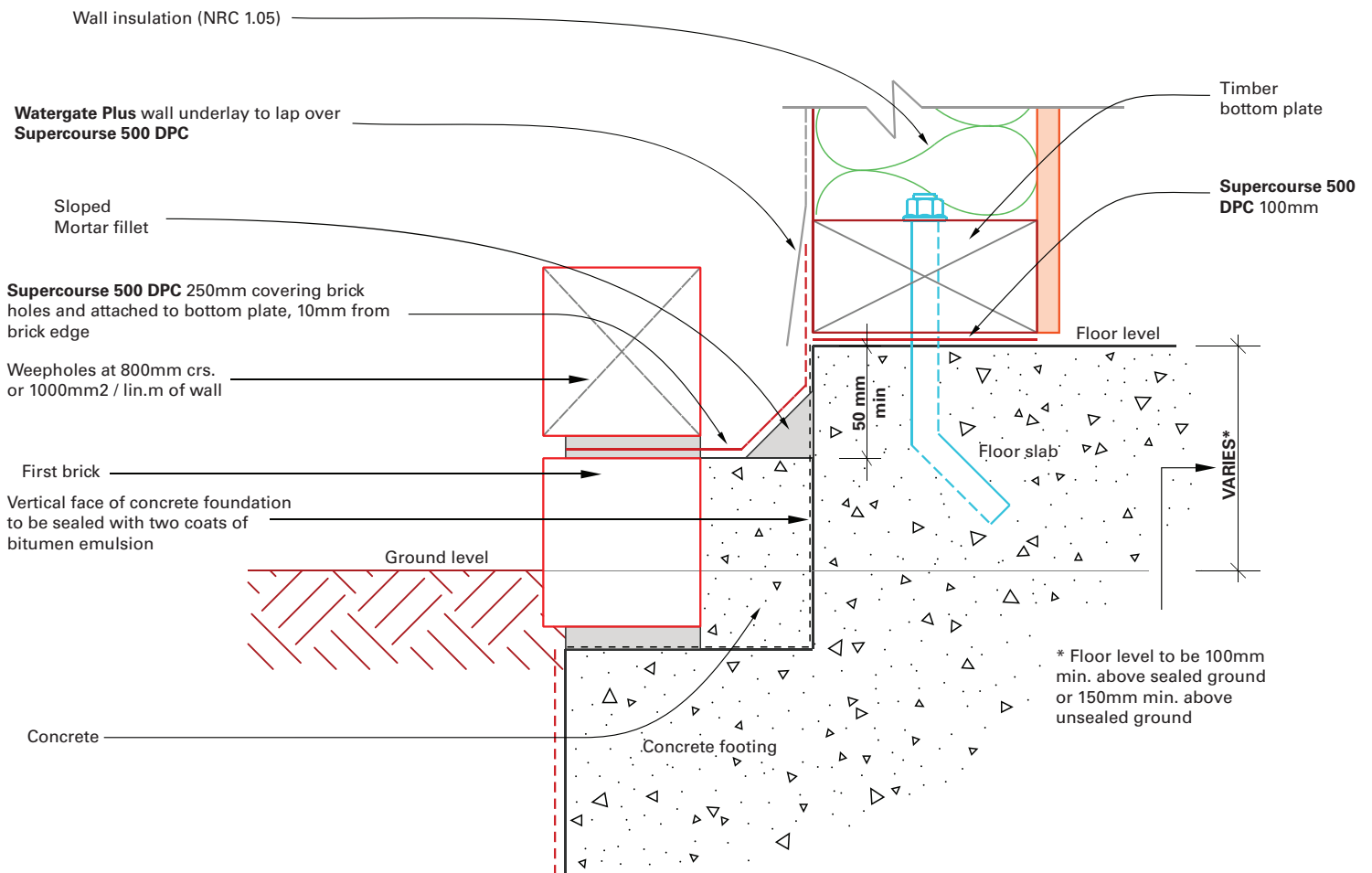
Note: Jamb flashing to overlap all flashing

Window Jamb

B6



Footing Detail Brick Veneer



Footing Detail Brick Veneer



Thermakraft[™]

SUPERCOURSE 500



Thermakraft[™]



Customer Services
0800 806 595

11 Turin Place, East Tamaki, Auckland, NZ
P.O Box 58-112, Botany, Auckland 2163
Phone 0800 806 595 or +64 9 273 3727
Fax +64 9 273 3726
Email info@thermakraft.co.nz
www.thermakraft.co.nz

The recommendations contained in Thermakraft's literature are based on good building practice, but are not an exhaustive statement of all relevant information and are subject to any conditions contained in the Warranty. All product dimensions and performance claims are subject to any variation caused by normal manufacturing process and tolerances. Furthermore, as the successful performance of the relevant system depends on numerous factors outside the control of Thermakraft (for example quality of workmanship and design), Thermakraft shall not be liable for the recommendations in that literature and the performance of the Product, including its suitability for any purpose or ability to satisfy the relevant provisions of the Building Code, regulations and standards. Literature subject to change without notification. Latest documentation can be found on the website.