

ALUBAND WINDOW FLASHING SYSTEM

APPLICATION AND INSTALLATION GUIDE

APPLICATION & INSTALLATION

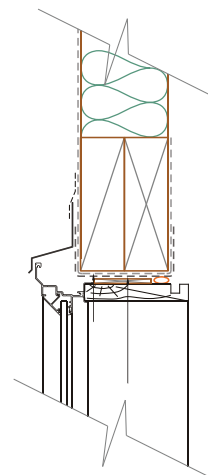
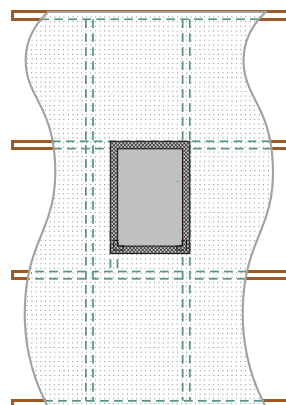
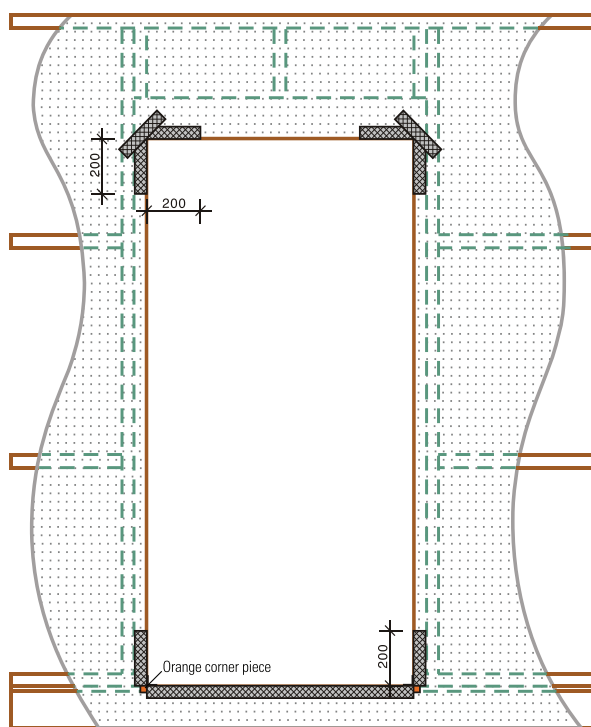
- 1 Cut the wall underlay/air barrier at a 45° angle away from each corner. Fold flaps tightly into the window or door opening and fix with staples on the back faces of the framing.
- 2 Fix the Thermakraft Corner Moulded Piece to the bottom corners by way of staples or clouts to the two jambs. Always ensure that Aluband is applied to surfaces that are clean and free of dust, contaminants, solvents, oils or waxes. Note the following: 150mm wide tape is used for 100mm wide window or door framing, and the 200mm wide tape is used for 140mm to 150mm wide reveals. (With steel framed houses use Double Sided Tape to attach the Thermakraft Aluband Corner Moulded Piece to metal framing).
- 3 Measure 200mm up both jambs, add 400mm to the length of the window sill and cut to suit that measurement.
- 4 First remove the release film from the tape; align the back edge of the tape with the inside edge of the sill.
- 5 Using the Thermakraft Tool, firmly press the tape onto the wall underlay to ensure good adhesion and ensure the tape is fitted tightly into the jamb to sill corners.
- 6 At the sill/jamb corners cut the tape from the external edge of the frame outwards. Fold flaps back onto the wall underlay/air barrier and press tape firmly for good adhesion.
- 7 Proceed to fit the Window Flashing Tape to the top corners of the frame (200mm across lintel x 200mm down jamb).
- 8 For window or door lintel to jamb junction, apply a butterfly using the 75mm wide x 100mm long Aluband. Fix at a 45° angle to the jamb with an overlap at the corner of 3mm.
- 9 Door frames are to be treated similarly to window openings. The sill may be either a timber or a concrete floor.

Window and door frames

A) Staple orange corner piece to the bottom corner sill. Place tape 200mm up the jambs and across the full width of the sill opening. Align tape with the back of the frame opening.

B) At the top corner place tape 200mm down the jamb and 200mm across the lintel. Place a strip of 75mm tape across the top corner.

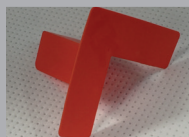
- 10 Meter boxes with built-in flanges to be taped with Window Flashing Tape along each flange to the building underlay.
- 11 Window Flashing Tape is used to seal the up stand of the window head flashing to the building underlay. (Refer to the cladding manufacturer's details).





Thermakraft Window Flashing System

A polymeric faced, modified bituminous self-adhesive tape.



Thermakraft Aluband Corner Moulded Piece

Made from inert polyethylene (orange). Used in conjunction with Aluband and building underlay.



Thermakraft Tool

Used to ensure proper adhesion of the tape to the building underlay.

IMPORTANT INFORMATION

To assist the adhesion of window flashing tapes Thermakraft suggests the following two options this is particularly relevant in the following conditions:

- In temperatures below 5°C
- When adhering to non-woven surfaces such as Covertex™
- When the tape has been lifted or moved after initial application

Application of Heat:

- Press the window sill tape into position in the usual manner
- Apply a gentle heat, using a heat gun on low heat to the top of the window sill tape
- Once the adhesive starts to soften use the Thermakraft tool or a roller to firmly press the tape into the wall underlay ensuring good adhesion
- Take care not to damage the foil face lining

Difficult to Bond Substrates Surface Preparation:

Always ensure that Aluband is applied to surfaces that are clean and free of dust, contaminants, solvents, oils or waxes.

Application of Scotch® Super 77™ Spray Adhesive: When installing Aluband Flashing Tapes on difficult to bond substrates, Scotch® Super 77™ Spray Adhesive may be used. Ensure that the wall underlay/substrate is dry and free of dirt before applying the spray adhesive. Apply a light spray/coating of the spray adhesive onto the underlay/substrate. Wait for a minute to allow the spray adhesive to become tacky. When tacky to the touch apply the flashing tape in the normal manner.

Adhesives and Solvents:

After the installation of Aluband, ensure that the edges do not come into contact with solvent based sealants or adhesives. Solvents in these products can adversely affect the adhesion or dissolve the bituminous adhesive and cause it to run. If the application of solvent based adhesives or sealants are necessary, cover the edges with Thermakraft F150 pure foil tape or equivalent foil tape to form a barrier.

LOSP Treated Timber:

Aluband should not be applied directly on to the timber, or indirectly on to a timber sheathed in underlay that has been freshly LOSP treated. Always allow the solvent to fully flash off prior to wrapping in underlay and applying Aluband.

Exposure Time:

Aluband must not be left exposed to the elements for more than 42 days.



For additional details and latest specifications www.thermakraft.co.nz



Customer Service **0800 806 595**

Thermakraft™ THERE IS NO SUBSTITUTE

Thermakraft Ltd 11 Turin Place, East Tamaki, Auckland, New Zealand
P.O.Box 58-112, Botany, Auckland 2163 **Phone** 0800 806 595 or +64 9 273 3727
Fax +64 9 273 3726 **Email** info@thermakraft.co.nz **www.thermakraft.co.nz**

The recommendations contained in Thermakraft's literature are based on good building practice, but are not an exhaustive statement of all relevant information and are subject to any conditions contained in the Warranty. All product dimensions and performance claims are subject to any variation caused by normal manufacturing process and tolerances. Furthermore, as the successful performance of the relevant system depends on numerous factors outside the control of Thermakraft (for example quality of workmanship and design), Thermakraft shall not be liable for the recommendations in that literature and the performance of the Product, including its suitability for any purpose or ability to satisfy the relevant provisions of the Building Code, regulations and standards. Literature subject to change without notification. Latest documentation can be found on the website.