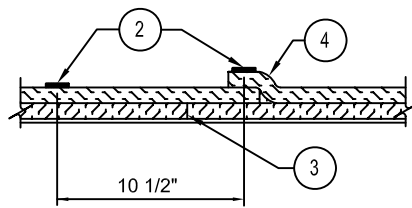
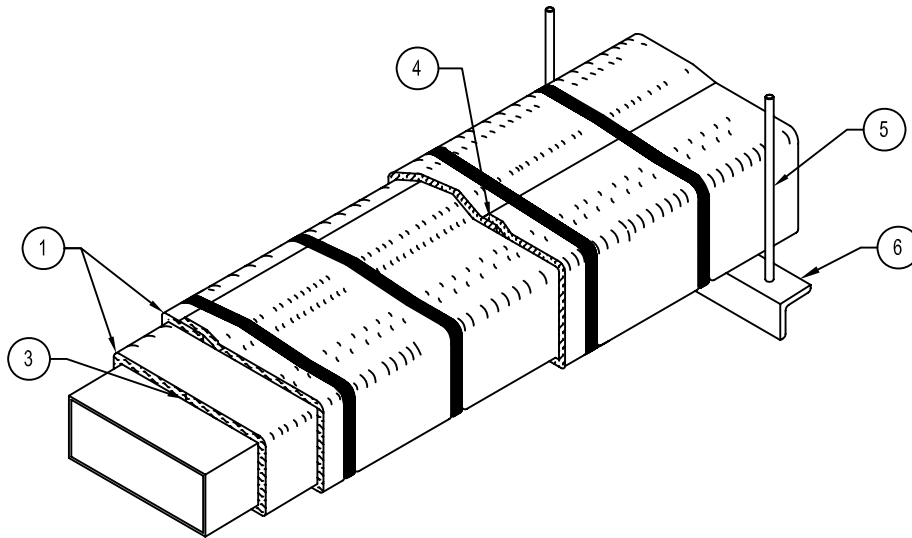
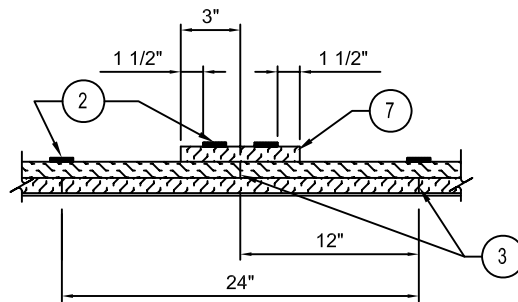


**Commercial Kitchen Grease Duct Enclosure System
Air Ventilation Duct Enclosure System**

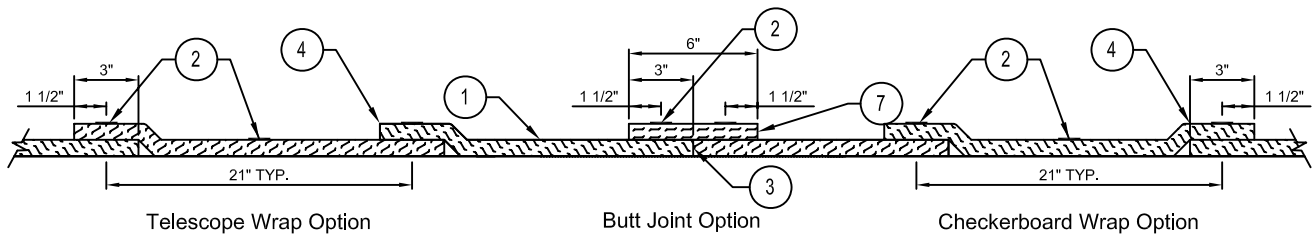
1 or 2 Hour Shaft Alternative / Zero Clearance to Combustibles



BUTT-JOINT/3" OVERLAP



BUTT-JOINT/COLLAR



SINGLE LAYER OR OUTSIDE LAYER INSTALLATION OPTIONS

LEGEND	
1	Two Layers of FireMaster FastWrap XL Blanket for Grease Duct Enclosures One Layer of FireMaster FastWrap XL Blanket for Air Ventilation Duct Enclosures
2	Steel banding minimum 1/2" wide by 0.015" thick.
3	Tight butt joints on inner layer
4	Min. 3" overlap on perimeter and between adjacent blanket on outside layer
5	Min. 3/8" diameter hanger rod
6	Min. 2" x 2" x 1/8" angle for Grease Duct Enclosures Min. 1-1/2" x 1-1/2" x 1/8" angle or SMACNA Equivalent for Air Ventilation Duct Enclosures
7	Optional 6" FireMaster FastWrap XL collar

The integrity of Firemaster duct systems is limited to the quality of the installation.