

Green Quartz **4201**

w/r 4350

LRV 24.0

NCS S 5005-G50Y



Chromite **4202**

w/r 4610

LRV 15.1

NCS S 6500-N

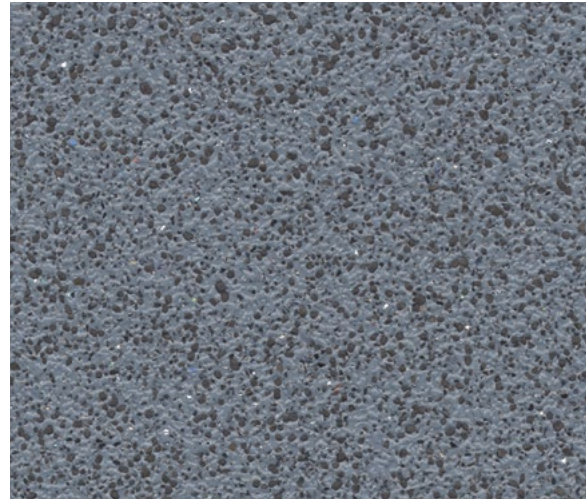


Biotite **4203**

w/r 8640

LRV 6.1

NCS S 8000-N



Breccia **4204**

w/r 4670

LRV 17.8

NCS S 5010-R90B



Siltstone **4205**

w/r 4600

LRV 22.6

NCS S 5005-Y80R



Red Ochre **4206**

w/r 4206

LRV 12.8

NCS S 5030-Y80R

**Heavy-duty safety flooring with enhanced slip resistance for commercial kitchens and food processing areas**

w/r = weld rod    NCS = Natural Colour System    LRV = Light Reflectance Value



\* Refer to BRE Global ratings on [www.greenbooklive.com](http://www.greenbooklive.com)