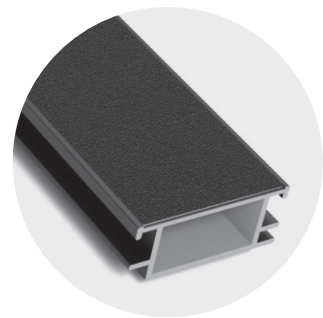




OUTDURE ANTI-SLIP STRIP WITH 3M™ SAFETY-WALK™

A DIMENSIONALLY STABLE INNOVATION FOR
DECKED AREAS THAT ARE D1 ACCESS ROUTES



Traditionally 3M™ Safety-Walk™ is adhered directly onto an outdoor surface, to increase its slip resistance and meet compliance for D1 access routes - such as stairs treads and ramps. The surface is often timber or ply which becomes affected by moisture and impacts the durability of the taped D1 Access area.

The Anti-Slip Strip is as a dimensionally stable alternative to this traditional application. The profile is designed to be laid flush between composite or hardwood decking boards and can be easily retrofit onto an existing frame for remedial work or installed onto Outdure's QwickBuild structural framing and support system using QwickClip twists.

The 3M™ SAFETY-WALK™ 600 Series tread tape consists of abrasive particles bonded by a tough, durable polymer to a dimensionally stable plastic film, the reverse side adheres to the Anti-Slip Strip profile, which is manufactured from 6063-T6 structural aluminium.

SLIP RESISTANCE

DIN9GER.51130 (ZH1/571):

FRICTION (DRY) R13
VOLUME (ML/DMSQ.) V8

GERMAN RAMP TEST DIN51130

SLIP ANGLE 35+
SLIP ALERT TEST
VALUE (STV) <130
WET SLIP RISK LOW RISK
SUITABLE FOR VERY WET

*For more information on
D1 Access Routes for the
New Zealand Building
code, please visit:
www.building.govt.nz*

INSTALL ON QWICKBUILD STRUCTURAL FRAMING SYSTEM OR TIMBER SUB-FRAME
DIMENSIONS : 54 X 23 X 2800 MM /// ALL.QB.AS.054X23.M