

HENDERSON

HENDERSON PRODUCT CATALOGUE

Sliding and Folding Door Hardware



ASSA ABLOY

The global leader in
door opening solutions.

STRAIGHT SLIDING BOTTOM ROLLER SYSTEMS

Section Index and General Guide

Select system for your bottom roller application.	Residential	Commercial	Industrial	Max. Door	Product	Data Sheet
APPLICATION						
<i>Residential</i>						
For small cupboards and serving hatches	■			25kg	Cello	C20
For wardrobes or large cupboards	■			25kg	Loretto	C30
For sliding doors	■	■		170kg	Mansion	C40
<i>Commercial</i>						
For interior and exterior doors. To suit one or more doors	■	■		200kg	Imperial 200	C50
For interior and exterior doors. To suit one or more doors	■	■		270kg	Majestic	C60
For interior and exterior doors	■	■		300kg	Lift & Slide	C70
<i>Industrial</i>						
For timber or metal doors. To suit one or more doors.		■	■	225kg	Sterling 225	C80
For timber or metal doors. To suit one or more doors			■	350kg	Sterling 350	C90
For timber or metal doors and gates			■	800kg	Sterling 800	C100
For timber or metal doors and gates			■	2000kg	Sterling 2000	C110
For heavy metal framed doors and gates			■	3600kg	Sterling 3600	C120
For heavy metal framed doors and gates			■	8000kg	Sterling 8000	C130

CELLO

For bottom rolling wardrobe doors. Max 25kg each leaf.

APPLICATION

- Ideal for wardrobe and cupboard doors
- For timber framed and composite doors
- Easy height adjustment
- 2 or 3 door kits are available to create an opening width of 2400mm

DOOR SPECIFICATION

Track System	Cello
For Individual Door Leaves:	
Max Panel Weight	25kg
Max Panel Width	920mm
Panel Thickness	16-40mm
Max Panel Height	2400mm

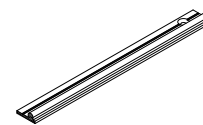
STANDARD SETS AND PACKS

Sets comprises of top/bottom rail x4 (H80X), face fix nylon guides- x4 for 2 doors, x3 for 3 doors, face fix nylon wheeled bottom rollers x4 for 2 doors, and x3 for doors

Set No	Opening width	Track length	Hardware for
HC15	1500mm	1500mm	2 doors
HC18	1800mm	1800mm	2 doors
HC24	2400mm	2400mm	3 doors
Pack No	Application		
HC1	Single Door fittings pack		

HARDWARE SPECIFICATION

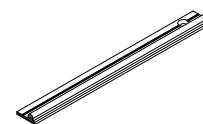
Rail	H80X	Aluminium top and bottom rail <i>Available 1200, 1500, 1800, 2400, 3600mm lengths</i>
Guides	HC/TG	Top guide
Bottom Rollers	HC/BR	Nylon wheeled bottom rollers
Accessories		



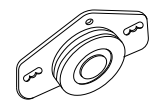
H80X - Top Guide



HC/TG - Top Guide



H80X - Bottom Rail

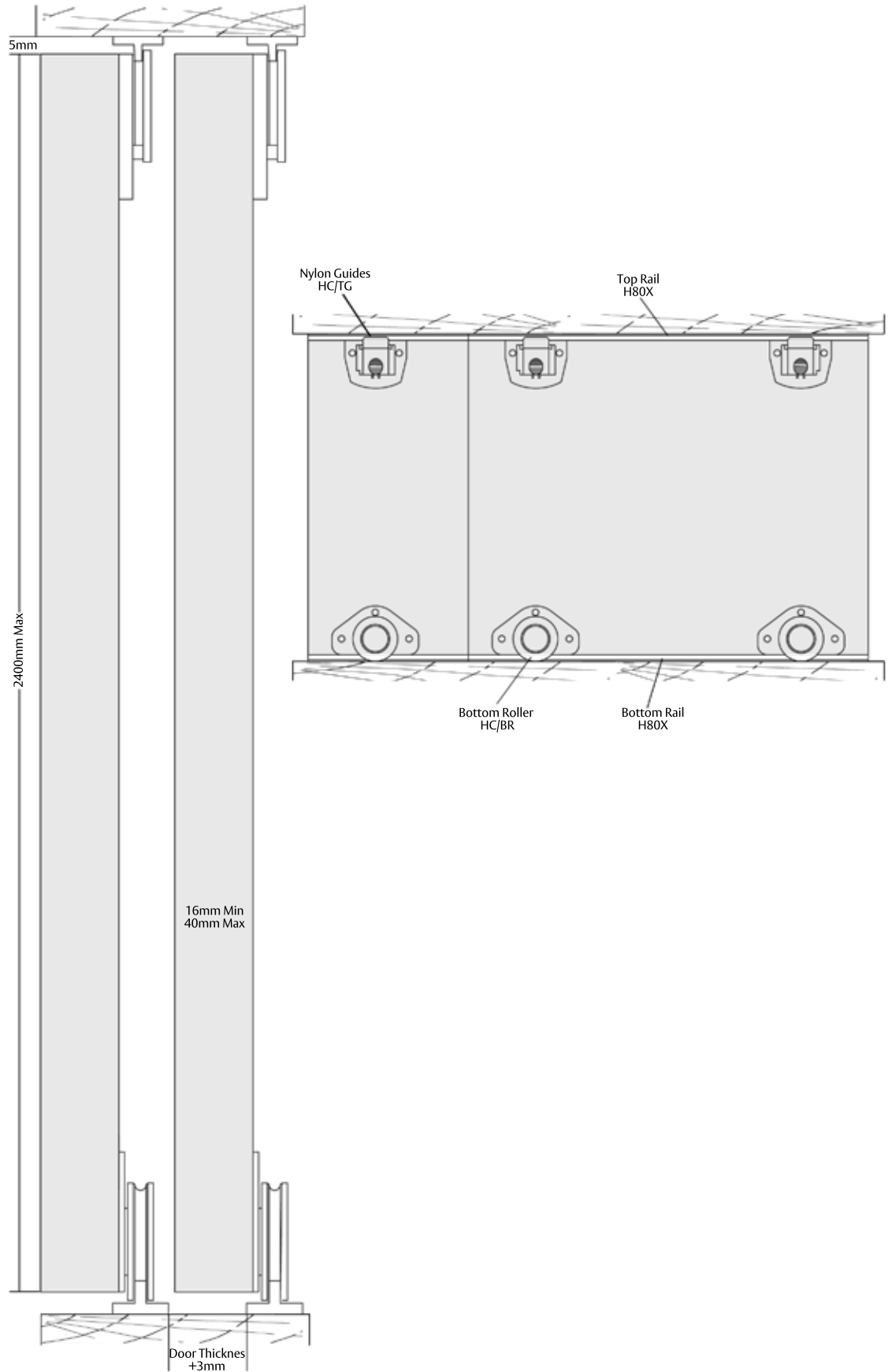


HC/BR - Bottom Roller

HENDERSON



HENDERSON



NOT TO SCALE

LORETTO

For bottom rolling wardrobe doors. Max 25kg each leaf.

APPLICATION

- Ideal for wardrobe and cupboard doors
- For timber framed and composite doors
- Quiet and smooth - nylon guides and rollers

DOOR SPECIFICATION

Track System	Loretto
For Individual Door Leaves:	
Max Panel Weight	25kg
Max Panel Width	900mm
Panel Thickness	20-45mm
Max Panel Height	2400mm

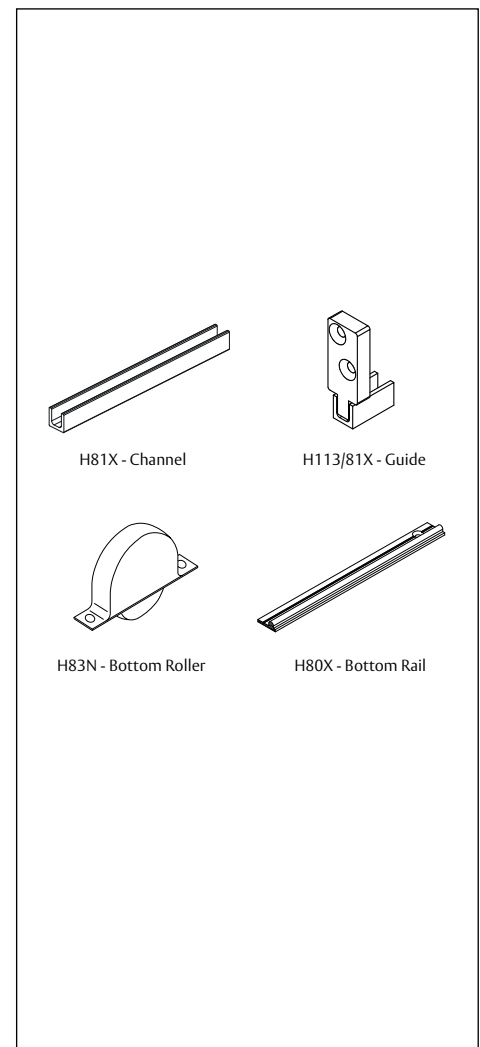
STANDARD SETS AND PACKS

Sets comprises of Bottom Rail x2 (**H80X**), Top Guide Channel x2 (**H81X**), Nylon Bottom Rollers x4 (**H83N**), Nylon Top Guides x4 (**H113/81X**) for 2 doors

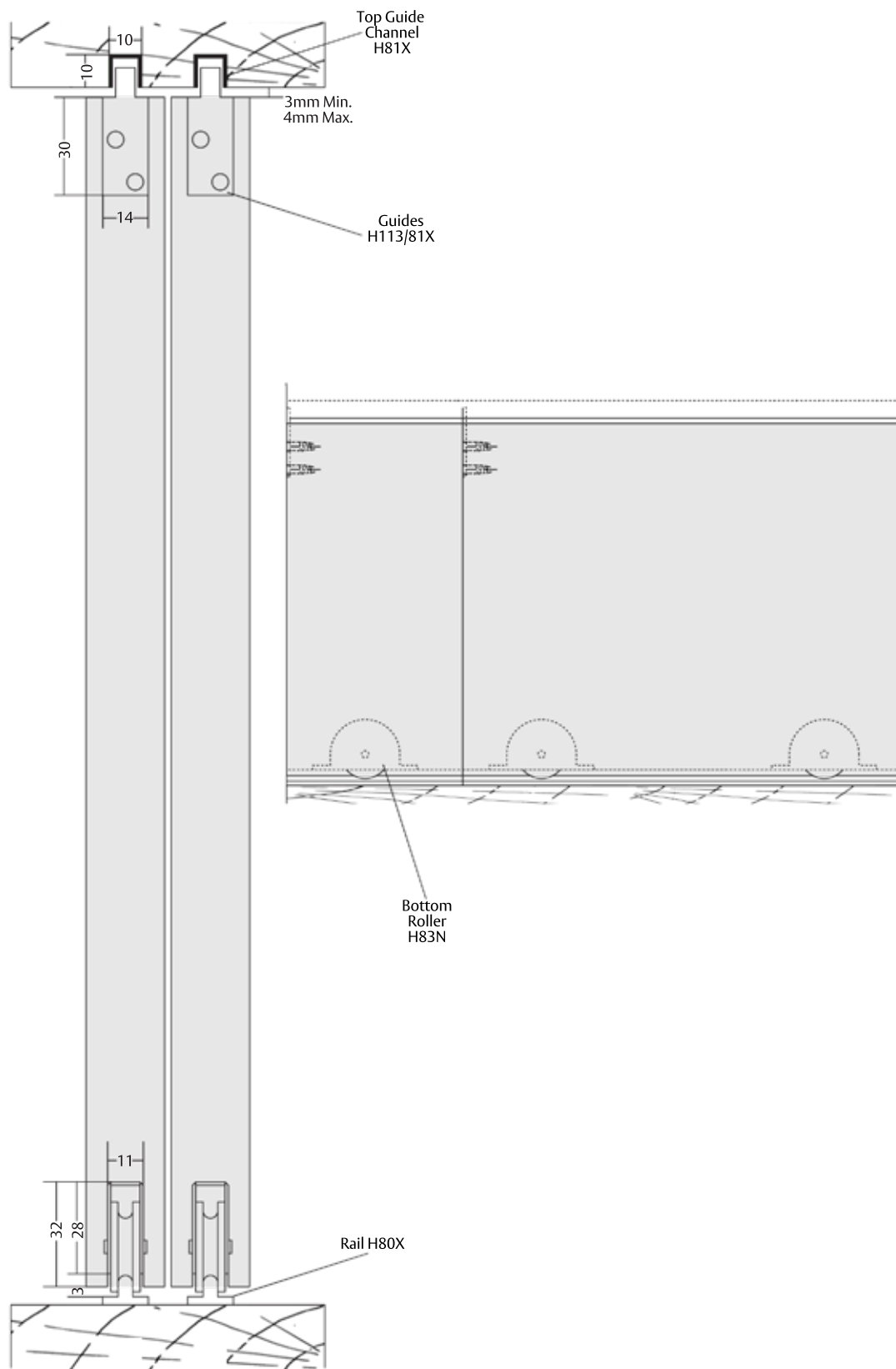
Set No	Opening width	Track length	Hardware for
HD4	1200mm	1200mm	2 doors
HD5	1500mm	1500mm	2 doors
HD6	1800mm	1800mm	2 doors

HARDWARE SPECIFICATION

Rail	H80X	Aluminium top and bottom rail <i>Available 1200, 1500, 1800, 2400, 3600mm lengths</i>
Channel	H81X	Aluminium top guide channel <i>Available 1200, 1500, 1800, 2400, 3600mm lengths</i>
Guides	H113/81X	Top guide
Bottom Rollers	H83N	Nylon wheeled bottom rollers
Accessories		



HENDERSON



NOT TO SCALE

MANSION

For bottom roller sliding residential doors. Max 80-170kg each.

APPLICATION

- For interior and exterior applications
- Ideally suited to premium joinery installations and applications where the supporting structure or lintel is insufficient for the weight of the door or where the headroom is limited
- Designed for straight sliding partitions or fully glazed patio doors, also suitable for flush or panelled doors
- To cover the width of opening, any number of doors can be used on single or multiple lines or rail, doors can slide to one or both sides
- Where fitted externally, a canopy is recommended to protect the top guide channel, brackets and top guide rollers

DOOR SPECIFICATION

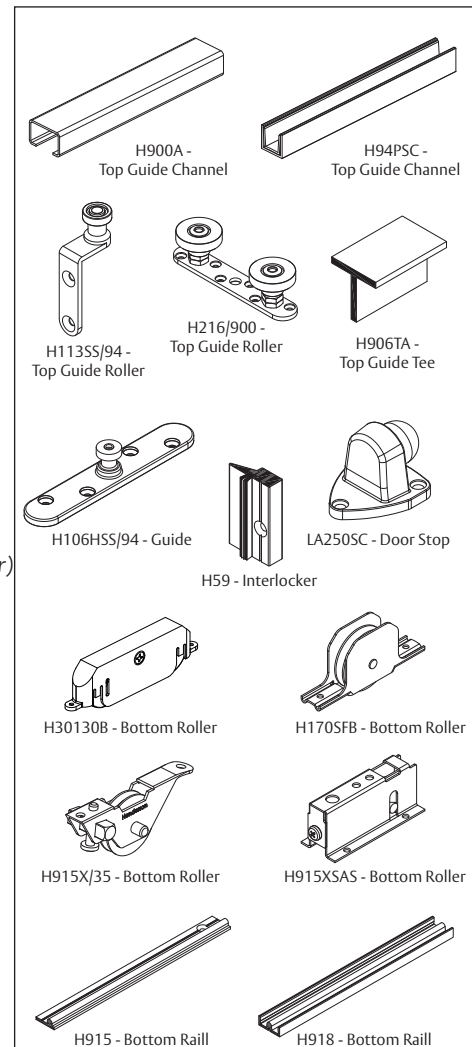
Rail System	Mansion
For Individual Doors:	
Max Door Weight	80 or 170kg
Min Door Thickness	35mm
Max Door Height	2600mm

Doors must be constructed with bottom rails of at least 150mm depth to accommodate the concealed, mortised bottom rollers. Door weight is carried on the floor permitting the use of a light overhead structure.

HARDWARE SPECIFICATION

Top Guide Tee	H906TA	Aluminium <i>Not recommended in situations where the door is likely to warp since the door could bind on the tee. The preferred option is the top guide channel and rollers.</i>
Top Guide Channel	H94X	Aluminium (2000, 3000, 4000 & 6000mm lengths)
	H94	Brass (2000, 3000, 4000 & 6000mm lengths)
	H94PSC	Aluminium supporting channel and polypropylene (2000, 3000, 4000 & 6000mm lengths)
	H900	Aluminium (2000, 3000, 4000 & 6000mm lengths)
Brackets	H1/SS	For single line - face fitted stainless steel
	H5/SS	For double line - face fitted stainless steel <i>Fix at 900mm centres (max.)</i>
Top Guide Rollers (2 per door)	H106HSS/94	Top plate fitting - single stainless steel bearing roller
	H113SS/94	Angle plate fitting - single stainless steel bearing roller
	H261SS/900	Top plate fitting - stainless steel with double nylon rollers one adjustable laterally to prevent rattle
Bottom Rollers (2 per door)	H170SFB	Brass roller with roller bearing in stainless steel body (170kg/door)
	H915X/35	Brass roller with roller bearing in zinc plated body (110kg/door)
	H915XSAS	Stainless steel roller, bearing and body. 10mm vertical adjustment (80kg per door)
	H30130B	Nylon roller, carbon bearing and plastic body. 10mm vertical adjustment (100kg per door)
Bottom Rail	H915	Brass (2000, 3000, 4000 & 6000mm lengths)
	H915X	Aluminium (2000, 3000, 4000 & 6000mm lengths)
	H918	Brass (2000, 3000, 4000 & 6000mm lengths)
	<i>Rails are drilled and countersunk for screwing to timber floor.</i>	
Interlocker		Refer to Components Section for more information
Accessories		
Frame Seal		Refer to Components Section for more information
Door Stop	HH2/SS	In channel door stop to suit 900 channel
	LA250C	Floor mounted door stop

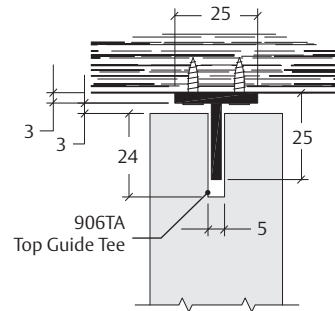
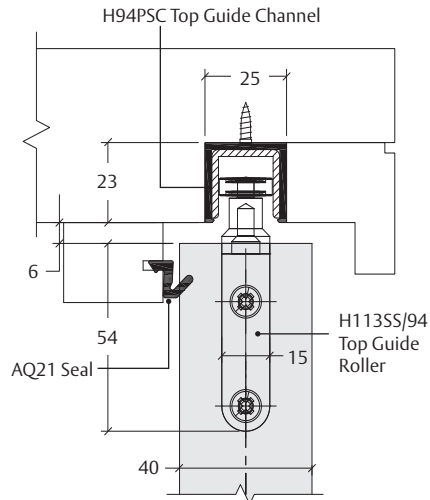
IMAGE
COMING
SOON



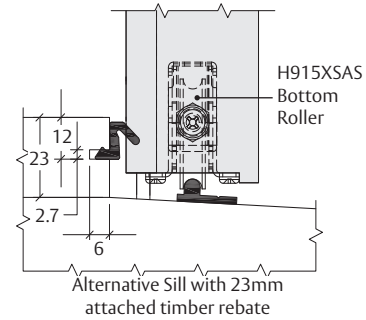
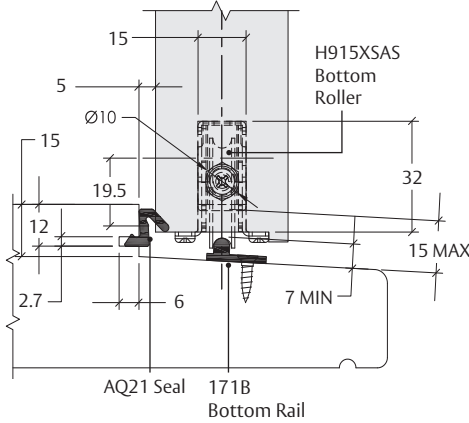
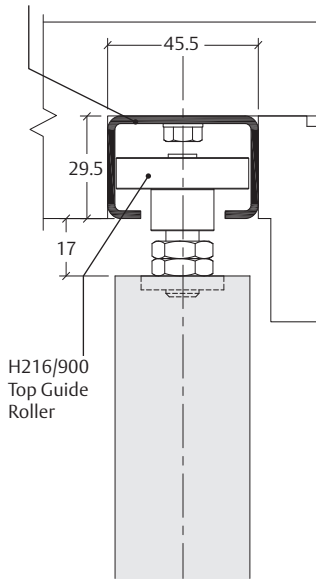
HENDERSON



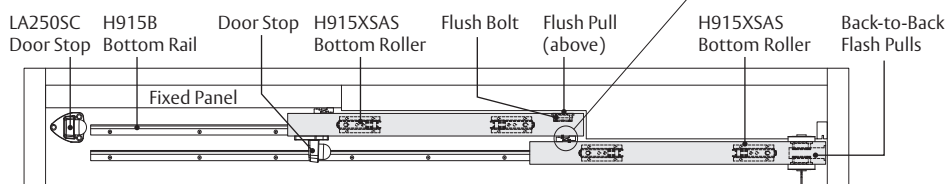
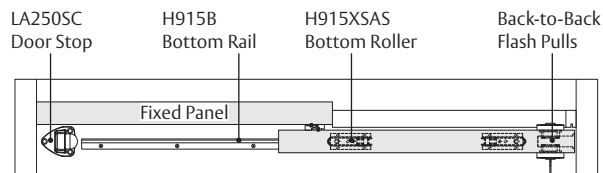
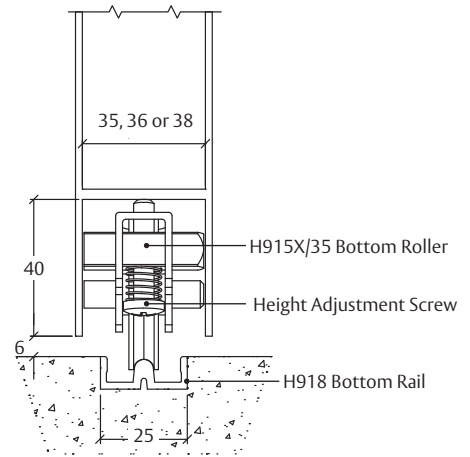
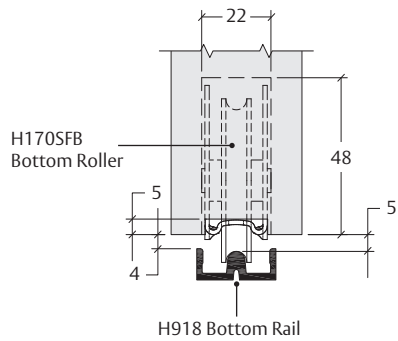
HENDERSON



H900A Top Guide Channel



NOT TO SCALE



IMPERIAL 200

For bottom roller sliding residential doors. Max 200kg each.

APPLICATION

- For timber sliding doors, interior and exterior applications
- Designed for straight sliding partitions or fully glazed patio doors and flushed panel doors
- Suited for where the supporting structure or lintel is insufficient for the weight of the door or where headroom is limited
- To cover the width of opening, any number of doors can be used on single or multiple lines or rail, doors can slide to one or both sides
- Where fitted externally, a canopy is recommended to protect the top guide channel, brackets and top guide rollers

DOOR SPECIFICATION

Rail System Imperial 200

For Individual Doors:

Max Door Weight 200kg
Min Door Thickness 40mm
Max Door Height 3000mm

Doors can be constructed with bottom rails of at least 150mm depth to accommodate the concealed, mortised bottom rollers. Door weight is carried on the floor permitting the use of a light overhead structure.

HARDWARE SPECIFICATION

Top Guide Tee **H906TA** Light Duty - Aluminium
Not recommended in situations where the door is likely to warp since the door could bind on the tee. The preferred option is the top guide channel and rollers. Top tee guide is drilled and countersunk for direct fitting to soffit.

Top Guide Channel **H94X** Aluminium (2000, 3000, 4000 & 6000mm lengths)
H94X/A Anodised aluminium (2000, 3000, 4000 & 6000mm lengths)
H94P Polypropylene (2000, 3000, 4000 & 6000mm lengths)
H94PSC Aluminium supporting channel and polypropylene (2000, 3000, 4000 & 6000mm lengths)
H900A Anodised aluminium (2000, 3000, 4000 & 6000mm lengths)

Brackets **H1SS** For single line - face fixed stainless steel
H5H/SS For double line - face fixed stainless steel
Fix at 900mm centres (max.)

Top Guide Rollers **H106HSS/94** Timber doors - concealed fixing with SS bearing
H113SS/94 Corner fitting - stainless steel with stainless steel bearings
(2 per door) **H261SS/900** Top plate fitting for 900 channels - stainless steel with anti-rattle double nylon rollers

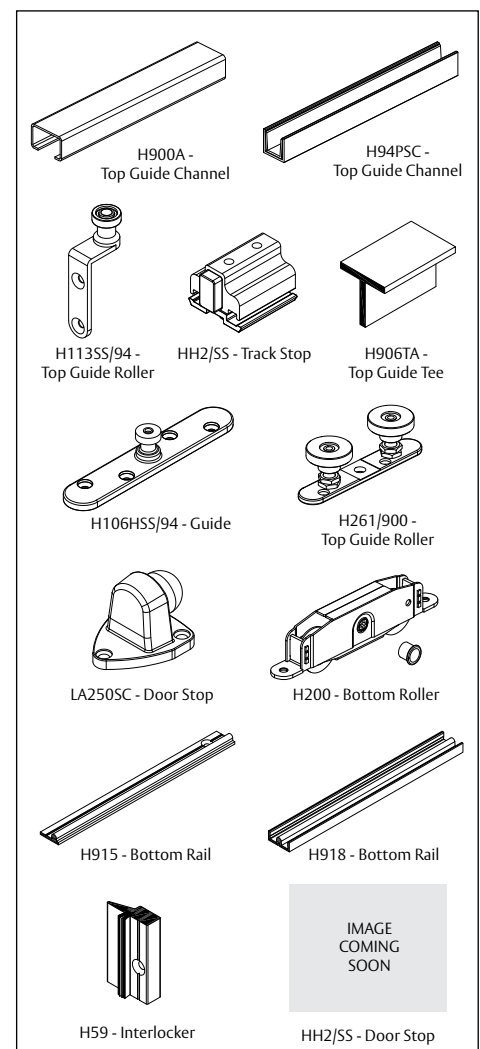
Bottom Rollers **H200** Stainless steel with precision stainless steel ball bearing wheels with side access adjustment
(black and white plug included)

Bottom Rail **H915B** Brass (1500, 2000, 3000, 4000 & 6000mm lengths)
H915X Aluminium (2000, 2500, 3000 & 4000mm lengths)
H918 Brass (1500, 2000, 3000, 4000 & 6000mm lengths)
Drilled and countersunk

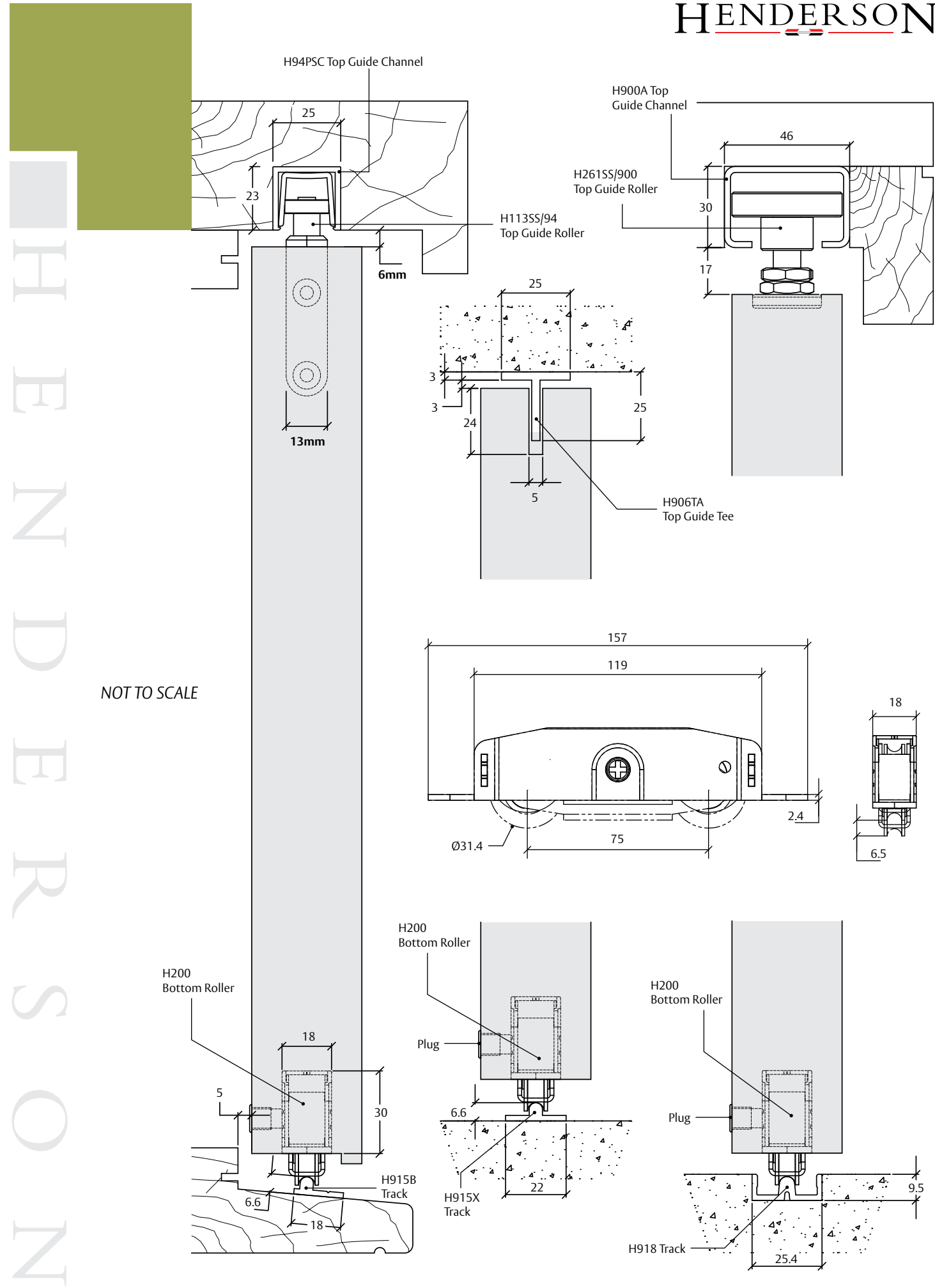
Interlocker Refer to **Components Section** for more information

Accessories Refer to **Components Section** for more information

Frame Seal Refer to **Components Section** for more information
Door Stop **HH2/SS** In channel door stop to suit 900 channel
LA250C Floor mounted door stop



HENDERSON



HENDERSON

MAJESTIC 270

For bottom roller sliding residential doors. Max 270kg each.

APPLICATION

- For timber sliding doors, interior and exterior applications
- Designed for heavy straight sliding partitions or fully glazed patio doors and flushed panel doors
- Suited for where the supporting structure or lintel is insufficient for the weight of the door or where headroom is limited
- To cover any width of opening, any number of doors can be used on single or multiple lines
- Where fitted externally, a canopy is recommended to protect the top guide channel, brackets and top guide rollers

DOOR SPECIFICATION

Rail System **Majestic 270**

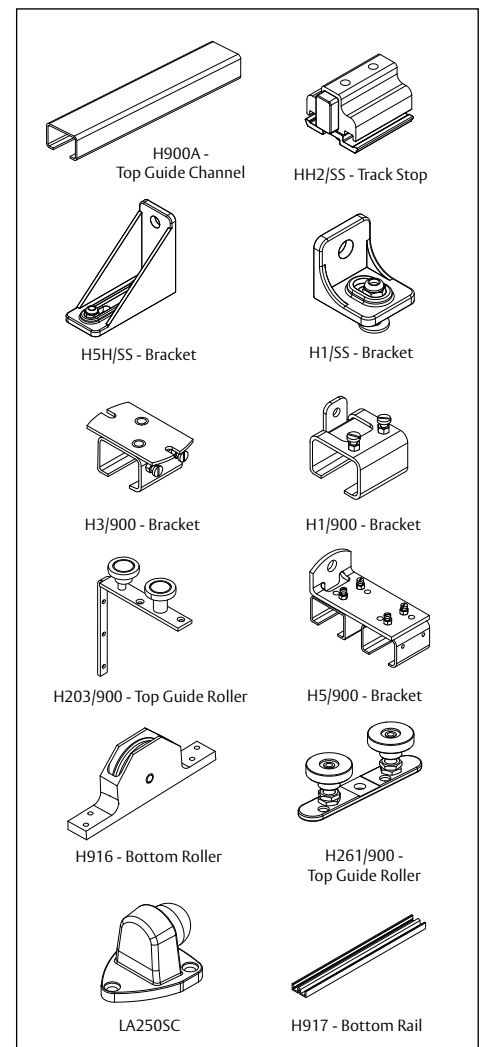
For Individual Doors:

Max Door Weight 270kg
Min Door Thickness 44-57mm
Max Door Height 3300mm

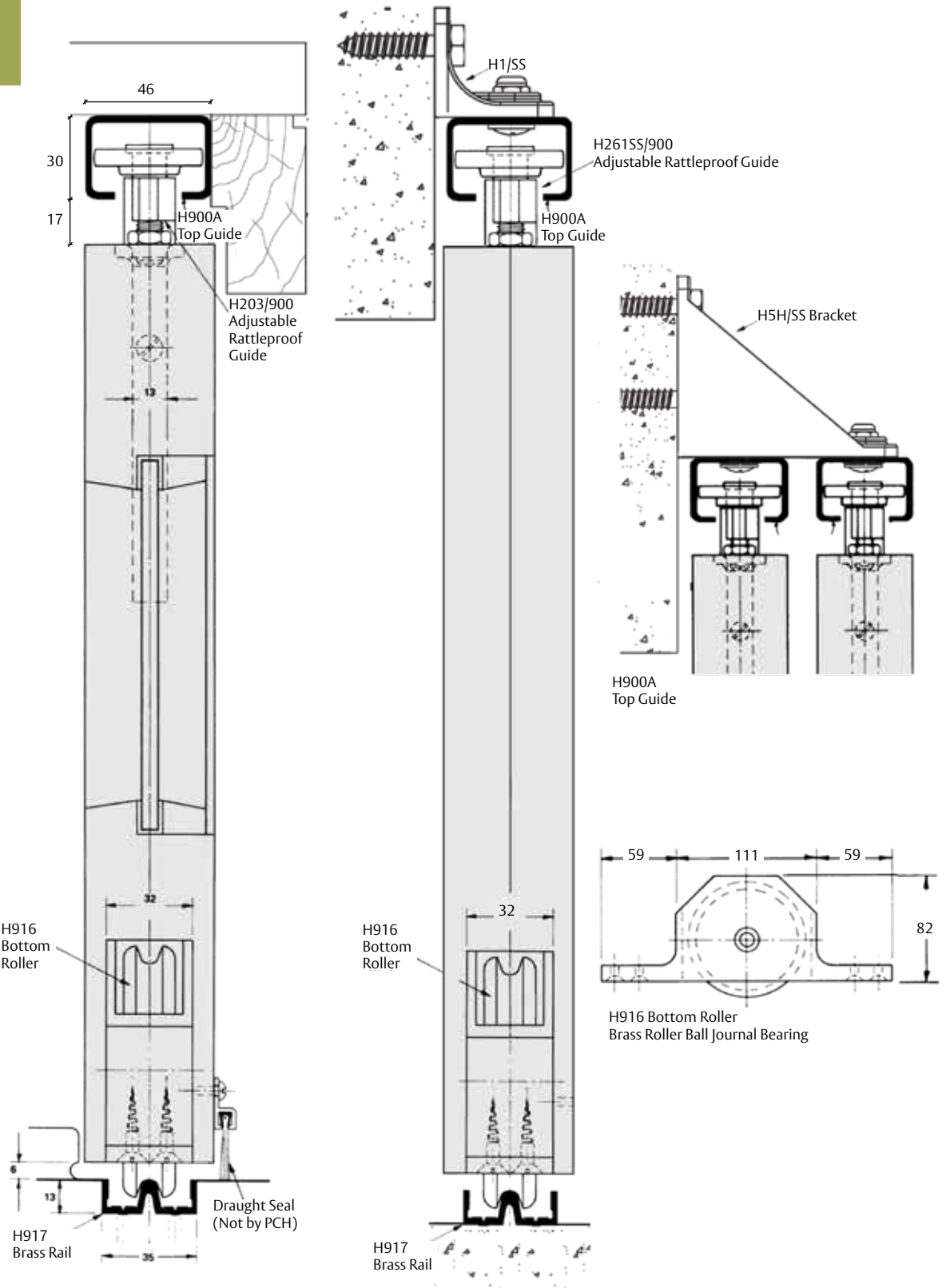
Doors can be constructed with a deep bottom section of minimum depth of 175mm to accommodate the concealed, mortised bottom rollers.

HARDWARE SPECIFICATION

Top Guide Channel	H900	Galvanised steel with safety lip (2000, 2500 & 3000mm lengths)
	H900A	Anodised aluminium (2000, 3000, 4000 & 6000mm lengths)
Top Guide Brackets	H1/SS	For single line - face fixed stainless steel
	H1/900	For single line - face fixed pressed steel
	H3/900	For single line - soffit fixed pressed steel
	H5/900	For double line - face fixed pressed steel
	H5H/SS	For double line - face fixed stainless steel Fix at 900mm centres (max.)
Top Guide Rollers	H203/900	Angle plate fitting - zinc plated steel with double adjustable anti-rattle rollers
(2 per door)	H261SS/900	Top plate fitting - stainless steel with double adjustable anti-rattle nylon rollers
Bottom Rollers	H916	Aluminium housing with brass wheel
(2 per door)		
Bottom Rail	H917	(1500, 2000, 3000 & 4000mm lengths)
Accessories		
Frame Seal	HAQ21W	Frame perimeter seal - white
	HAQ21B	Frame perimeter seal - brown
	HAQ48W	Door seal - white
	HAQ63B	Door seal - brown
Door Stop	HH2/SS	In channel door stop to suit 900 channel
	LA250SC	Floor mounted door stop



HENDERSON



STERLING 225

For bottom roller sliding commercial doors. Max 225kg each leaf.

APPLICATION

- For timber or metal doors on exterior applications
- Designed for commercial or industrial straight sliding partitions
- Suited for where the supporting structure or lintel is insufficient for the weight of the door or where headroom is limited
- To cover any width of opening, any number of doors can be used on single or multiple lines
- The bottom rail can be recessed, allowing traffic to pass over the rail without obstruction
- Where fitted externally, a canopy is recommended to protect the top guide channel, brackets and top guide rollers

DOOR SPECIFICATION

Rail System Sterling 225

For Individual Door Leaves:

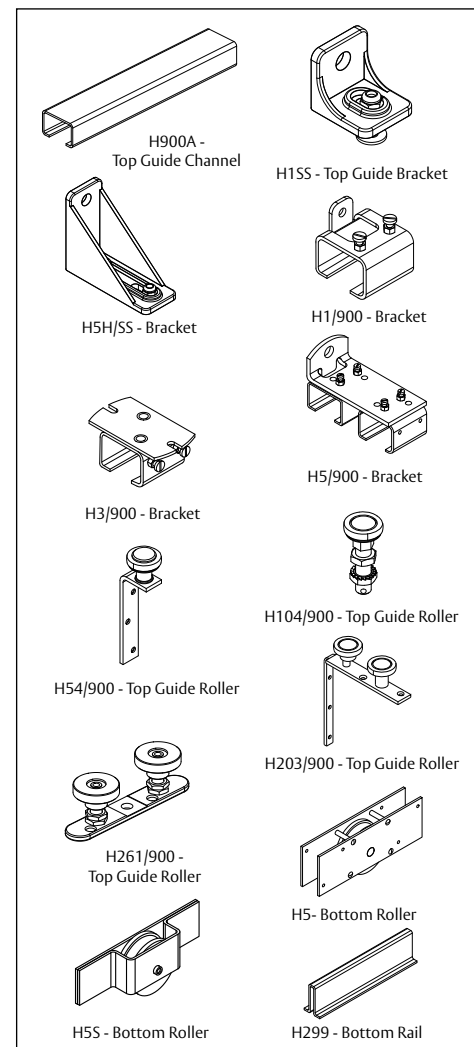
Max Door Weight 225kg
Min Door Thickness 44-50mm
Max Door Height 3300mm

Doors can be constructed with a deep bottom section of minimum depth of 230mm. For ease of operation, it is recommended the door width be at least 50% of the door height.

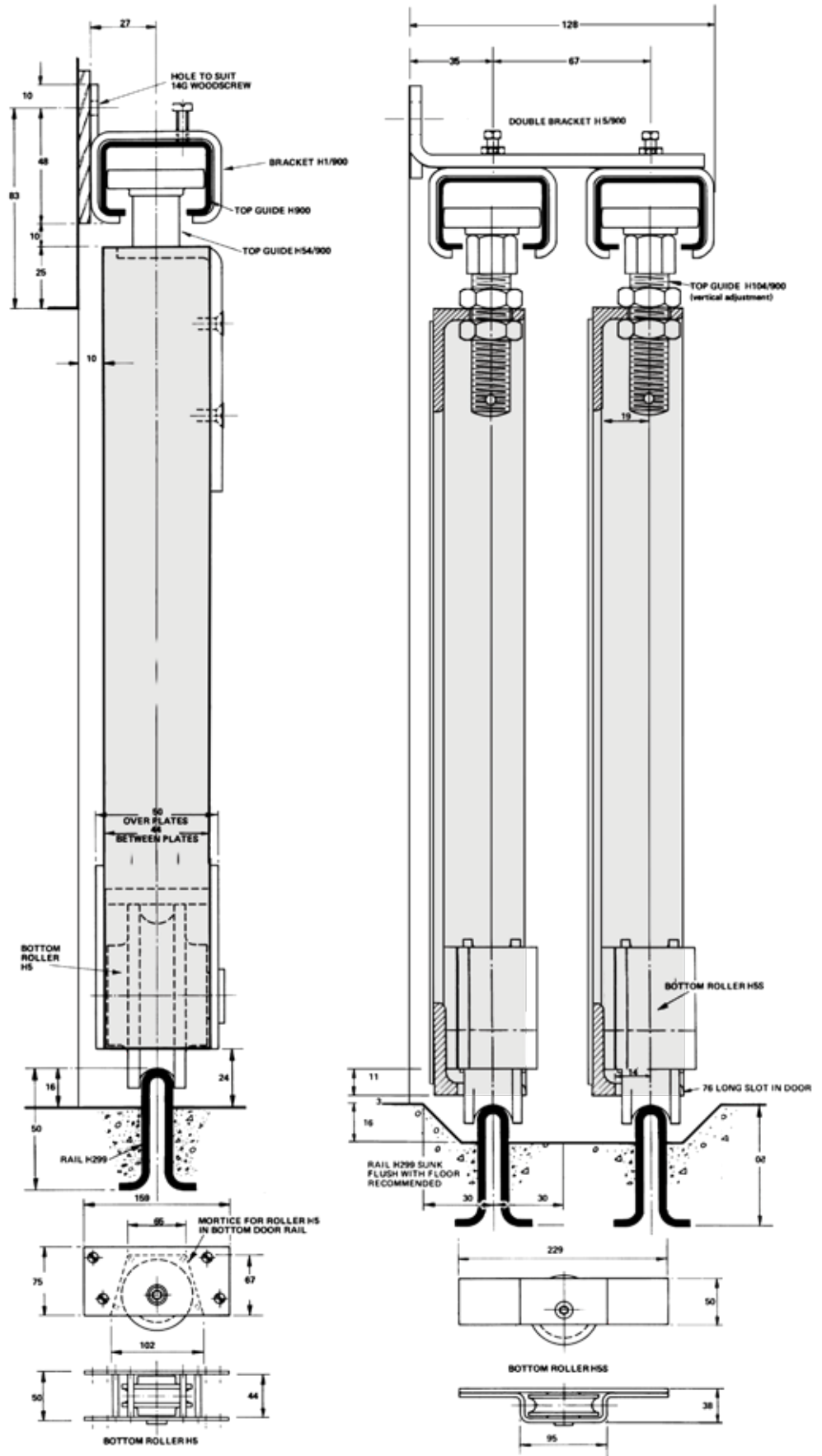
HARDWARE SPECIFICATION

Top Guide Channel	H900 H900A	Galvanised steel with safety lip (2000, 2500 & 3000mm lengths) Anodised aluminium (2000, 3000, 4000 & 6000mm lengths)
Top Guide Brackets	H1/SS H1/900 H3/900 H5/900 H5H/SS	For single line - face fixed stainless steel For single line - face fixed pressed steel For single line - soffit fixed pressed steel For double line - face fixed pressed steel For double line - face fixed stainless steel Fix at 900mm centres (max.)
Top Guide Rollers (2 per door)	H54/900 H104/900 H203/900 H261SS/900	Timber doors in industrial applications Metal doors in industrial applications Angle plate fitting - zinc plated steel with double adjustable anti-rattle rollers Top plate fitting - stainless steel with double adjustable anti-rattle rollers
Bottom Rollers (2 per door)	H5 H5S H5SU	Timber doors - zinc plated steel Metal doors - zinc plated steel Metal doors (bolt on) - zinc plated steel
Bottom Rail	H299	Galvanised steel (2000, 2500 & 3000mm lengths)
Accessories		
Flush Pull	H414	Diecast aluminium
Bow Handle	H463	Zinc plated cast iron
Flushbolt	H78	Zinc plated steel
Bolts	H994 H994S	Surface bolt, 380mm, zinc plated steel Surface bolt locking, 380mm, zinc plated steel

IMAGE
COMING
SOON



H
E
N
D
E
R
S
O
N



HENDERSON

STERLING 350

For bottom roller sliding commercial doors. Max 350kg each leaf.

APPLICATION

- For timber or metal doors on exterior applications
- Designed for commercial or industrial straight sliding partitions
- Suited for where the supporting structure or lintel is insufficient for the weight of the door or where headroom is limited
- To cover any width of opening, any number of doors can be used on single or multiple lines
- The top guide channel can be soffit or face fixed
- The bottom rail can be recessed, allowing traffic to pass over the rail without obstruction
- Where fitted externally, a canopy is recommended to protect the top guide channel, brackets and top guide rollers

DOOR SPECIFICATION

Rail System Sterling 350

For Individual Door Leaves:

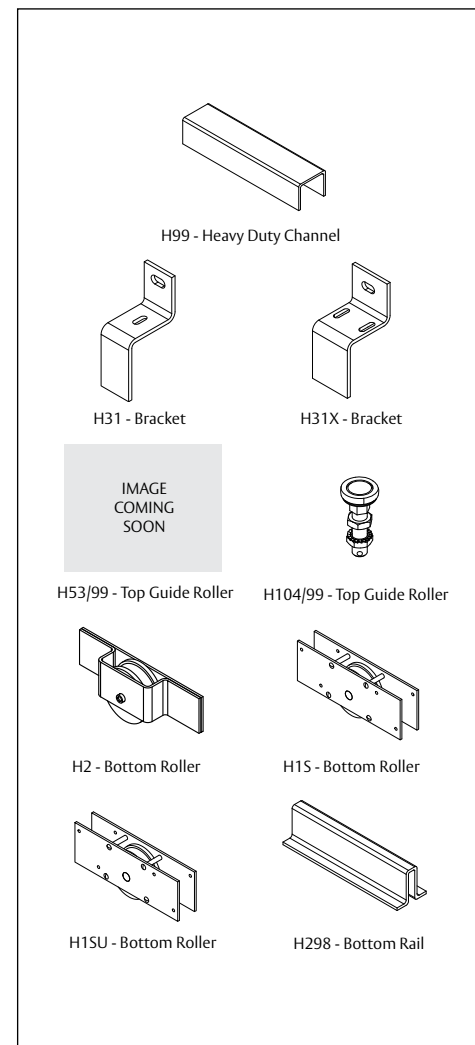
Max Door Weight	350kg
Min Door Thickness	44-54mm
Max Door Height	4000mm

Doors can be constructed with a deep bottom section of minimum depth of 230mm. For ease of operation, it is recommended the door width be at least 50% of the door height.

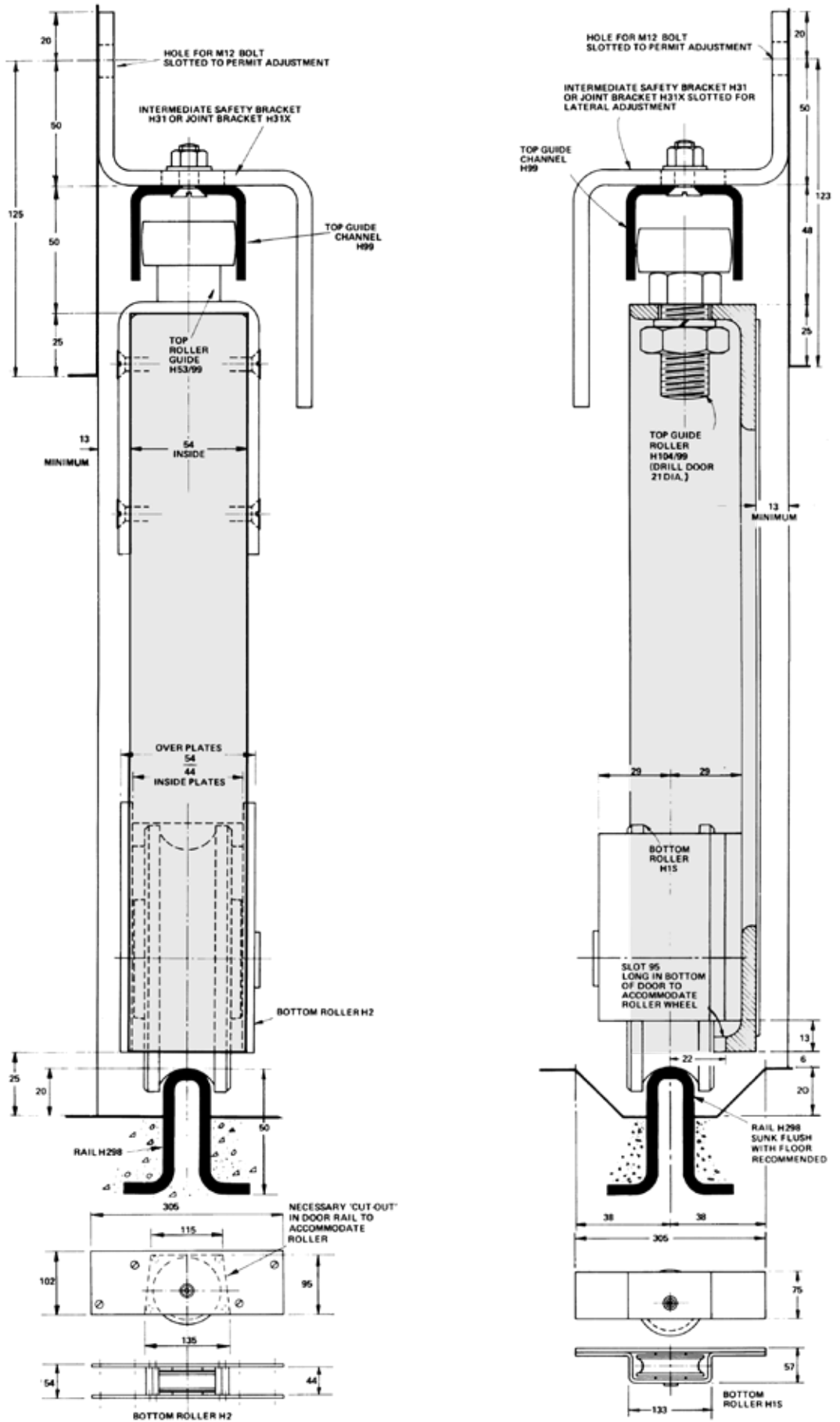
HARDWARE SPECIFICATION

Top Guide Channel	H99	Heavy duty galvanised steel (2000, 2500 & 3000mm lengths)	
Top Guide Brackets	H31	For single line - face fixed pressed steel	
	H31X	Single line jointing - face fixed pressed steel	
	H35	For double line - face fixed pressed steel	
	H35X	Double line jointing - face fixed pressed steel <i>Fix at 900mm centres (max.)</i>	
Top Guide Rollers (2 per door)	H53/99	Timber doors in industrial applications	
	H104/99	Metal doors in industrial applications	
Bottom Rollers (2 per door)	H15	Metal doors - zinc plated	
	H15U	Metal doors (bolt on) - zinc plated	
	H2	Timber doors - zinc plated	
Bottom Rail	H298	Galvanised steel (2000, 2500 & 3000mm lengths)	
Accessories	Flush Pull	H414 Diecast aluminium, 133 x 60mm	
	Bow Handle	H463 Zinc plated cast iron, 159 x 46mm	
	Flushbolt	H78 Zinc plated steel, 127 x 45mm	
	Bolts	H994	Surface bolt, 380mm, zinc plated steel
		H994S	Surface bolt locking, 380mm, zinc plated steel

IMAGE
COMING
SOON



HENDERSON



STERLING 800

For bottom rolling timber or metal doors. Max 800kg each leaf.

APPLICATION

- For timber or metal doors on exterior applications
- Designed for commercial or industrial straight sliding partitions
- Suited for where the supporting structure or lintel is insufficient for the weight of the door or where headroom is limited
- To cover any width of opening, any number of doors can be used on single or multiple lines
- The top guide channel can be soffit or face fixed
- The bottom rail can be recessed allowing traffic to pass over the rail without obstruction
- Where fitted externally, a canopy is recommended to protect the top guide channel, brackets and top guide rollers

DOOR SPECIFICATION

Rail System Sterling 800

For Individual Door Leaves:

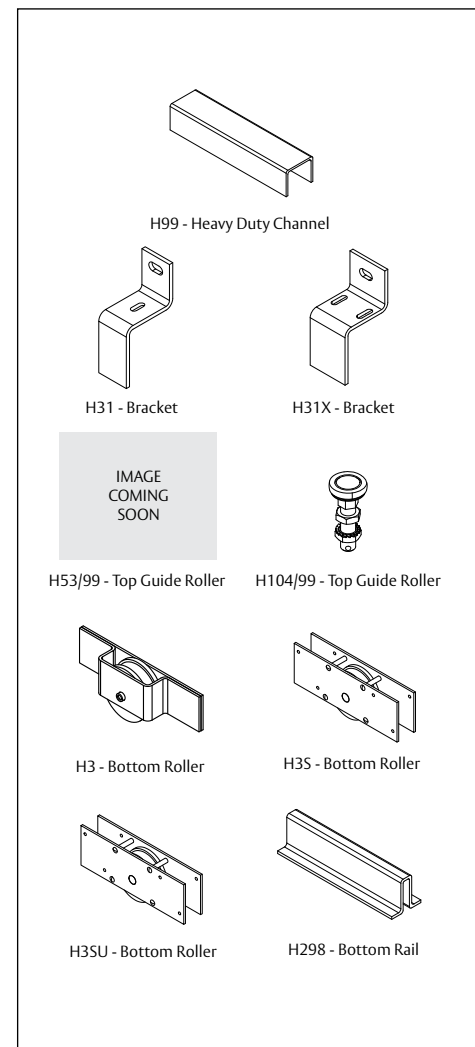
Max Door Weight	800kg
Min Door Thickness	54-63mm
Max Door Height	5200mm

Doors can be constructed with a deep bottom section of minimum depth of 230mm. For ease of operation, it is recommended the door width be at least 50% of the door height.

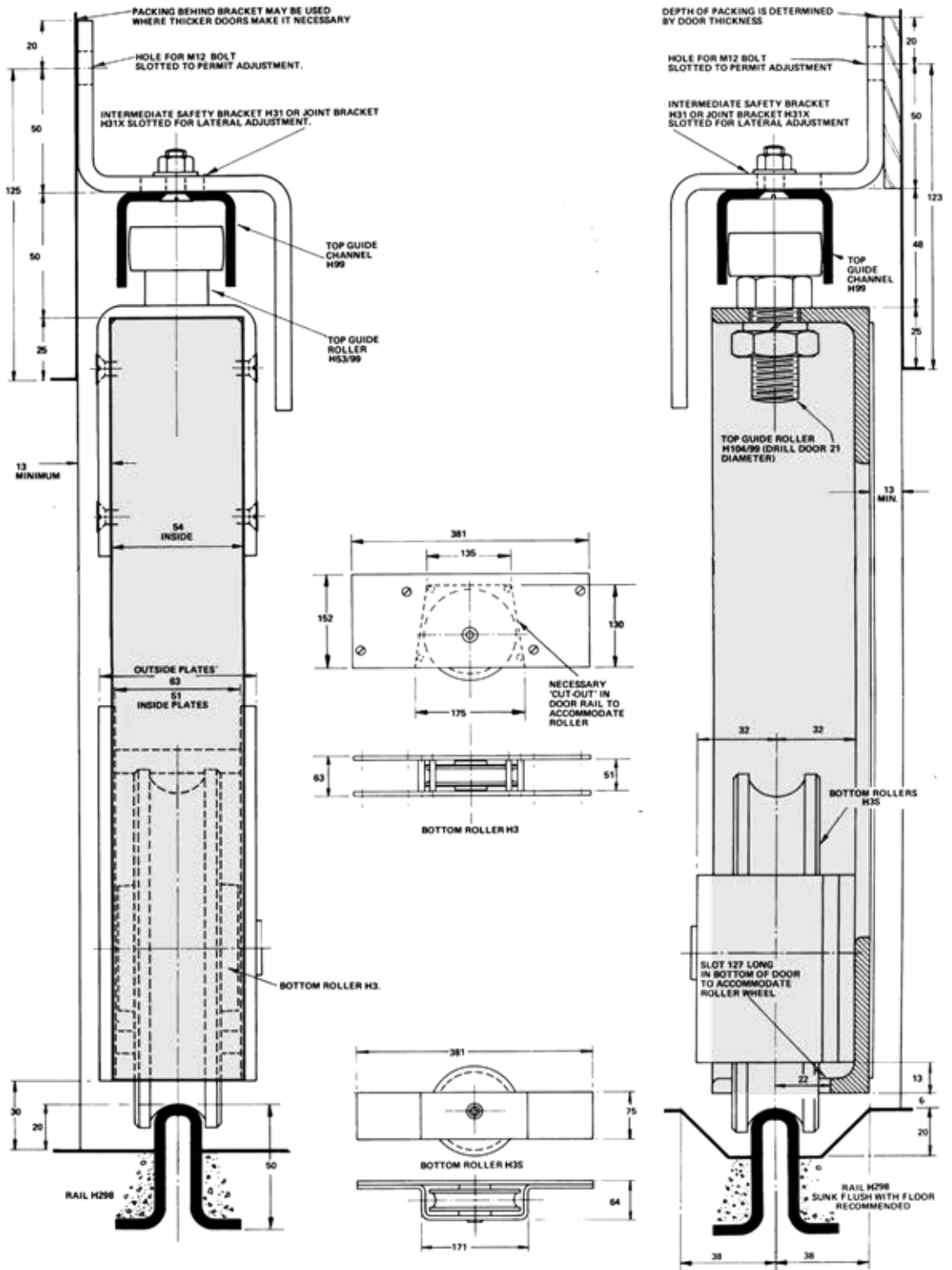
HARDWARE SPECIFICATION

Top Guide Channel	H99	Heavy duty galvanised steel (2000, 2500 & 3000mm lengths)
Top Guide Brackets	H31	For single line - face fixed pressed steel
	H31X	Single line jointing - face fixed pressed steel
	H35	For double line - face fixed pressed steel
	H35X	Double line jointing - face fixed pressed steel <i>Fix at 900mm centres (max.)</i>
Top Guide Rollers (2 per door)	H53/99	Timber doors in industrial applications
	H104/99	Metal doors in industrial applications
Bottom Rollers (2 per door)	H3	Timber doors - zinc plated
	H35	Metal doors - zinc plated
	H35U	Metal doors (bolt on) - zinc plated
Bottom Rail	H298	Galvanised steel (2000, 2500 & 3000mm lengths)
Accessories		
Flush Pull	H414	Diecast aluminium, 133 x 60mm
Bow Handle	H463	Zinc plated cast iron, 159 x 46mm
Flushbolt	H78	Zinc plated steel, 127 x 45mm
Bolts	H994	Surface bolt, 380mm, zinc plated steel
	H994S	Surface bolt locking, 380mm, zinc plated steel

IMAGE
COMING
SOON



HENDERSON



ASSA ABLOY New Zealand Ltd. PO Box 100407, North Shore, Auckland 0745 • 6 Armstrong Road, Albany, Auckland 0632, New Zealand
 Within New Zealand: Tel 09 415 8031 Fax 0800 478 297 www.assaabloy.co.nz • Outside New Zealand: Tel +64 9 921 7630 Fax +64 9 415 7222 www.assaabloy.co.nz

STERLING 2000

For bottom rolling timber or metal doors. Max 2000kg each leaf.

APPLICATION

- For timber or metal doors on exterior applications
- Designed for commercial or industrial straight sliding partitions
- Suited for where the supporting structure or lintel is insufficient for the weight of the door or where headroom is limited
- To cover any width of opening, any number of doors can be used on single or multiple lines
- The top guide channel can be soffit or face fixed
- The bottom rail can be recessed allowing traffic to pass over the rail without obstruction
- Where fitted externally, a canopy is recommended to protect the top guide channel, brackets and top guide rollers

DOOR SPECIFICATION

Rail System Sterling 2000

For Individual Door Leaves:

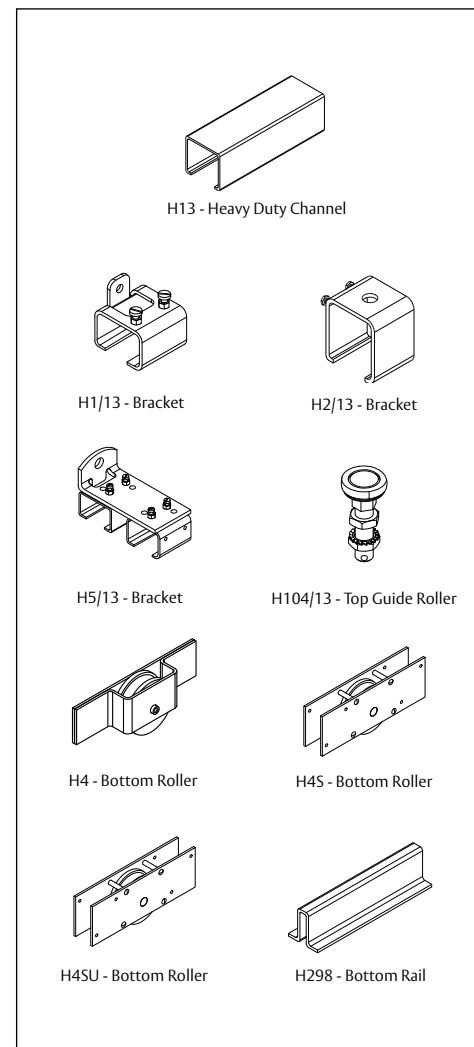
Max Door Weight	2000kg
Min Door Thickness	58-70mm
Max Door Height	7500mm

Doors can be constructed with a deep bottom section of minimum depth of 300mm. For ease of operation, it is recommended the door width be at least 50% of the door height.

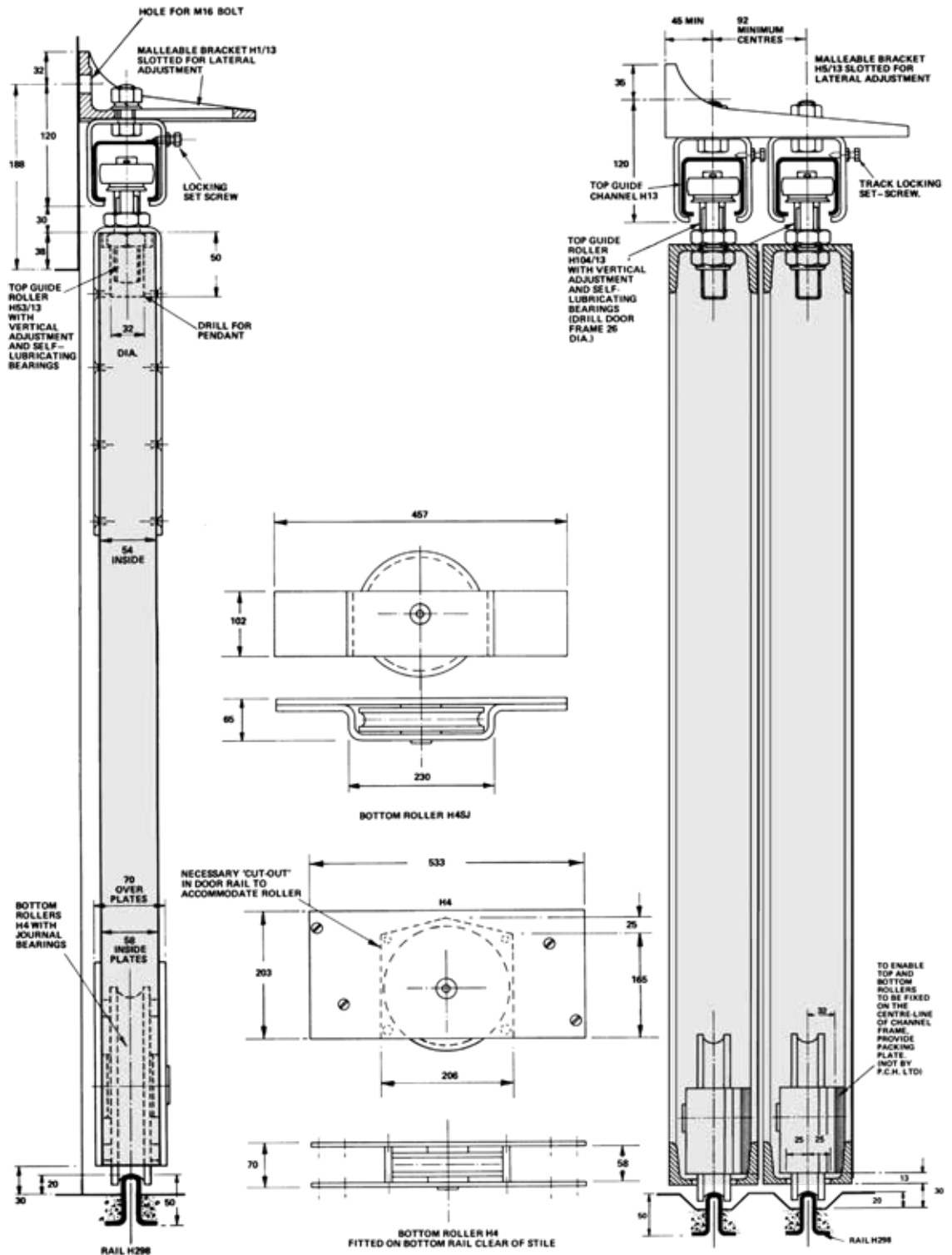
HARDWARE SPECIFICATION

Top Guide Channel	H13	Heavy duty rolled galvanised steel (2000, 2500 & 3000mm lengths)
Top Guide Brackets	H1/13	For single line - face fixed pressed steel
	H2/13	For single line - soffit fixed pressed steel
	H5/13	For double line - face fixed pressed steel Fix at 900mm centres (max.)
Top Guide Rollers (2 per door)	H53/13	Timber doors in industrial applications
	H104/13	Metal doors in industrial applications
Bottom Rollers (2 per door)	H4	Timber doors - zinc plated
	H4SJ	Metal doors - zinc plated
	H4SJU	Metal doors (bolt on) - zinc plated
Bottom Rail	H298	Galvanised steel (2000, 2500 & 3000mm lengths)
Accessories		
Flush Pull	H414	Diecast aluminium, 133 x 60mm
Bow Handle	H463	Zinc plated cast iron, 159 x 46mm
Flushbolt	H78	Zinc plated steel, 127 x 45mm
Bolts	H994	Surface bolt, 380mm, zinc plated steel
	H994S	Surface bolt locking, 380mm, zinc plated steel

IMAGE
COMING
SOON



HENDERSON



STERLING 3600 & 8000

For bottom rolling timber or metal doors. Max 3600kg or 8000kg each leaf.

APPLICATION

- For very high and heavy straight sliding industrial doors
- The bottom rollers are designed for each individual application and are dependent on the thickness of the door
- The top guide channel is to be designed and incorporated into the building structure.
(This is not supplied by PC Henderson)
- To cover the width of opening, any number of doors can be used on single or multiple lines
- Doors can be manually operated via mechanical operated drive unit and can be adapted for electrical operation

DOOR SPECIFICATION

Rail System	Sterling 3600	Sterling 8000
--------------------	----------------------	----------------------

For Individual Door Leaves:

Max Door Weight	3600kg	8000kg
Min Door Thickness	152mm (min.)	152mm (min.)
Max Door Height	12500mm	20000mm

Door design must be carried out by an engineer.

The doors should be constructed to prevent any door twist.

The bottom rail must be set level and maybe recessed for protection from traffic.

HARDWARE SPECIFICATION

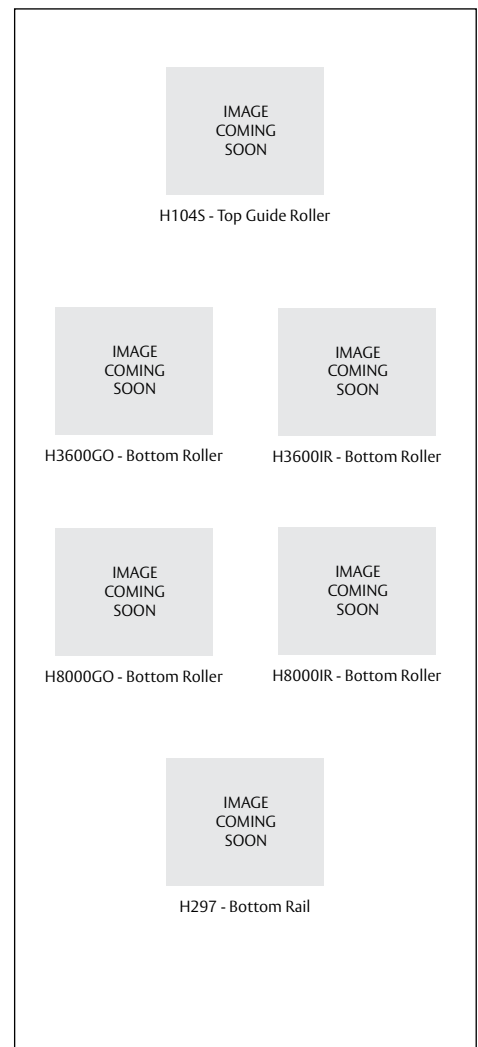
Top Guide Channel *The top guide channel should be fabricated from rolled steel section which is incorporated into the building structure*

Top Guide Rollers (4 per door) **H104S** Timber or metal doors - steel zinc plated (125, 175, and 200mm diameters to suit respective door heights 7000mm, 12500mm, 20000mm)

Bottom Rollers (2 per door) **3600GO** Timber or metal doors - gear operated (Sterling 3600)
 3600IR Timber or metal doors - idler (Sterling 3600)
 8000GO Timber or metal doors - gear operated (Sterling 8000)
 8000IR Timber or metal doors - idler (Sterling 8000)

To enable manual operation, gear operated bottom rollers must be used in conjunction with mechanical operated drive unit and crank handle

Bottom Rail **H297** Heavy duty section (2700mm standard length)



HENDERSON