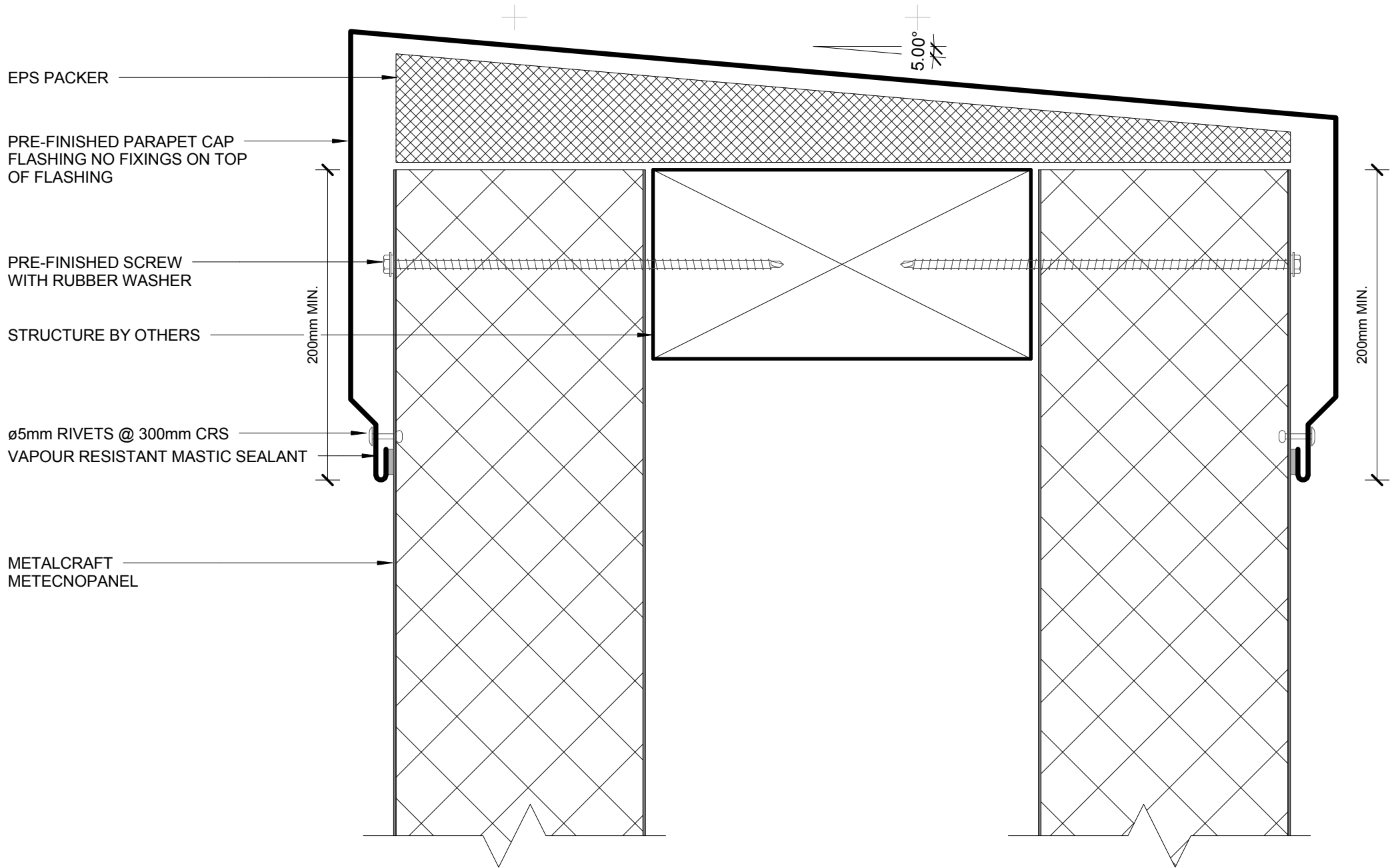


Metecnopanel Wall Details

DETAIL LIST

00 / 20	COVER SHEET
01 / 20	PARAPET
02 / 20	WINDOW HEAD
03 / 20	WINDOW SILL AND JAMB
04 / 20	VERTICAL JOINT TYPE C
05 / 20	PIPE PENETRATION w DEKTITE FLASHING
06 / 20	PIPE PENETRATION w PVC FLANGE
07 / 20	MIDFLOOR JOINT
08 / 20	SECRET FIXING JOINT 01
09 / 20	SECRET FIXING JOINT 02
10 / 20	METERBOX JAMB HEAD AND SILL DETAIL
11 / 20	INTERNAL/EXTERNAL CORNER DETAIL
12 / 20	ALTERNATIVE INTERNAL CORNER
13 / 20	ALTERNATE EXTERNAL CORNER
14 / 20	ABUTMENT 01
15 / 20	ABUTMENT 02
16 / 20	BOTTOM OF CLADDING 01
17 / 20	BOTTOM OF CLADDING 02
18 / 20	BOTTOM OF CLADDING 03
19 / 20	BOTTOM OF CLADDING 04
20 / 20	BOTTOM OF CLADDING 05





METALCRAFT
METECNOPANEL

Ø5mm RIVETS @ 300mm CRS

AIRSEAL ON BACKING ROD TO RUN
CONTINUOUSLY AROUND HEAD, SILL
AND JAMB

TEMPORARY PACKER IF REQUIRED,
REMOVED AFTER FIXING

WINDOW HEAD LINER

LINE OF WINDOW JAMB
LINER BEHIND

PRE-FINISHED WINDOW HEAD
FLASHING WITH 15° FALL

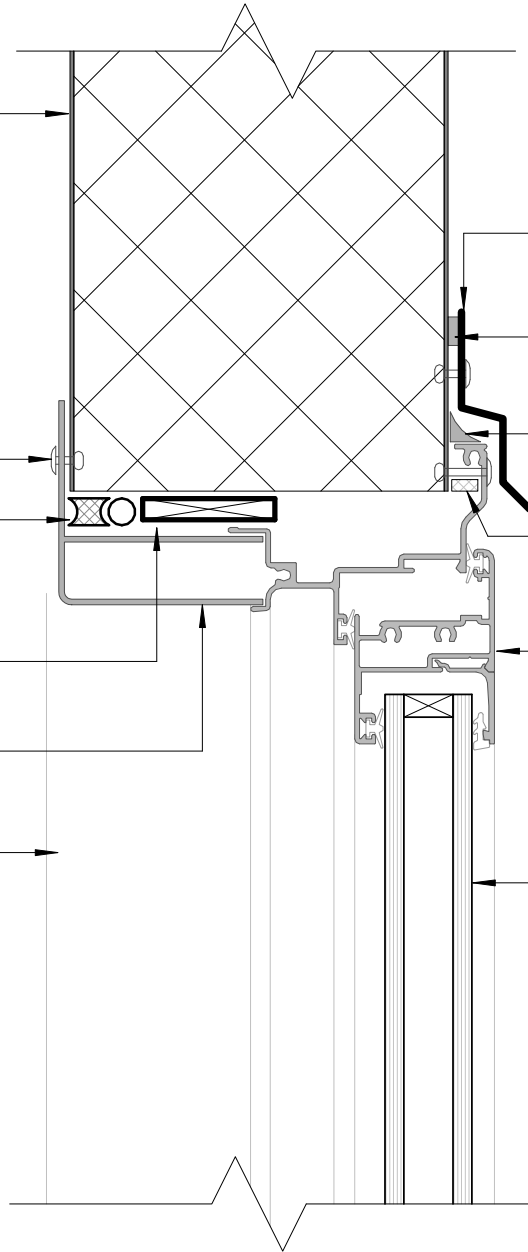
SILICON SEALANT

SILICON SEALANT

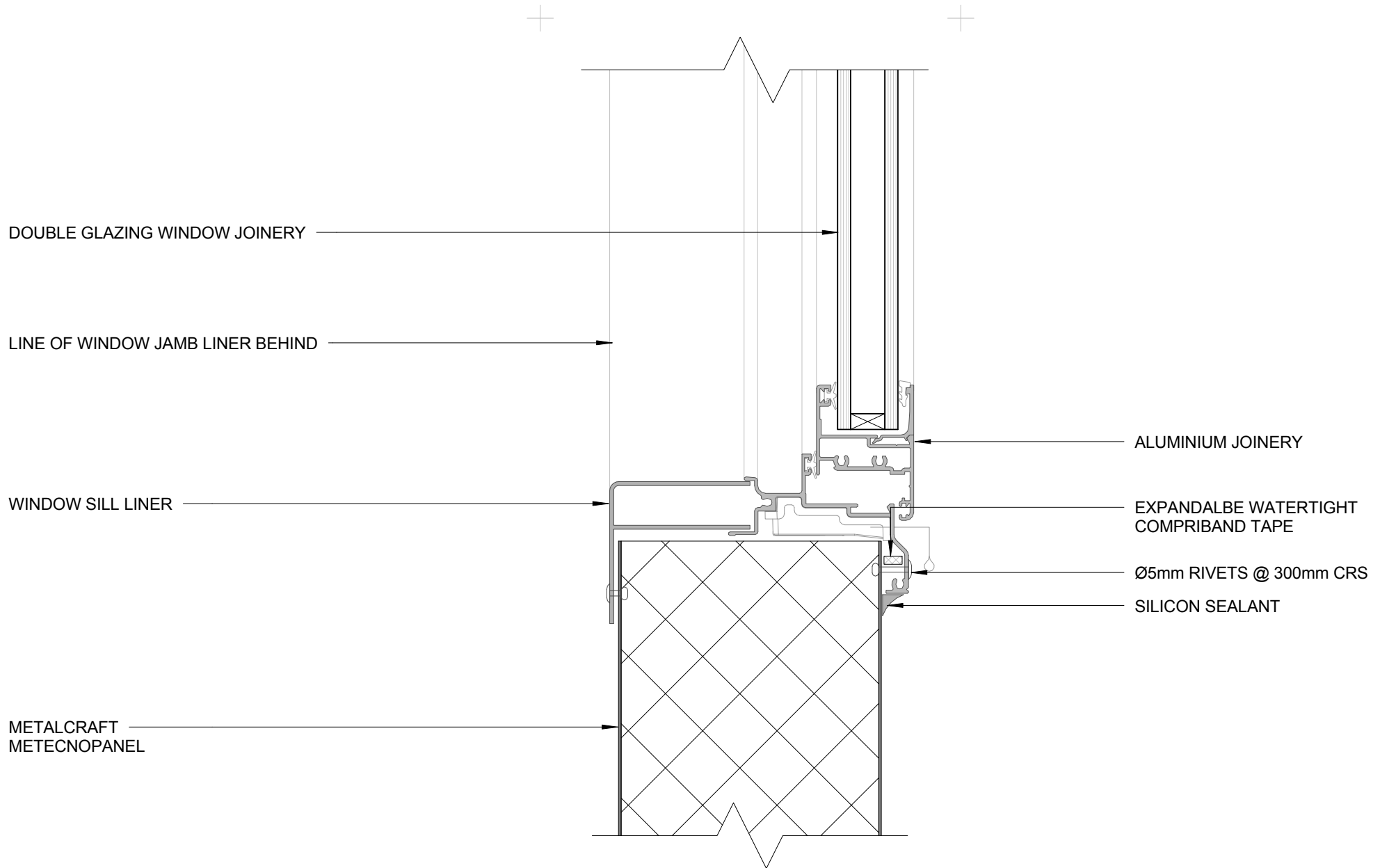
EXPANDALBE WATERTIGHT
COMPRIBAND TAPE

ALUMINIUM JOINERY

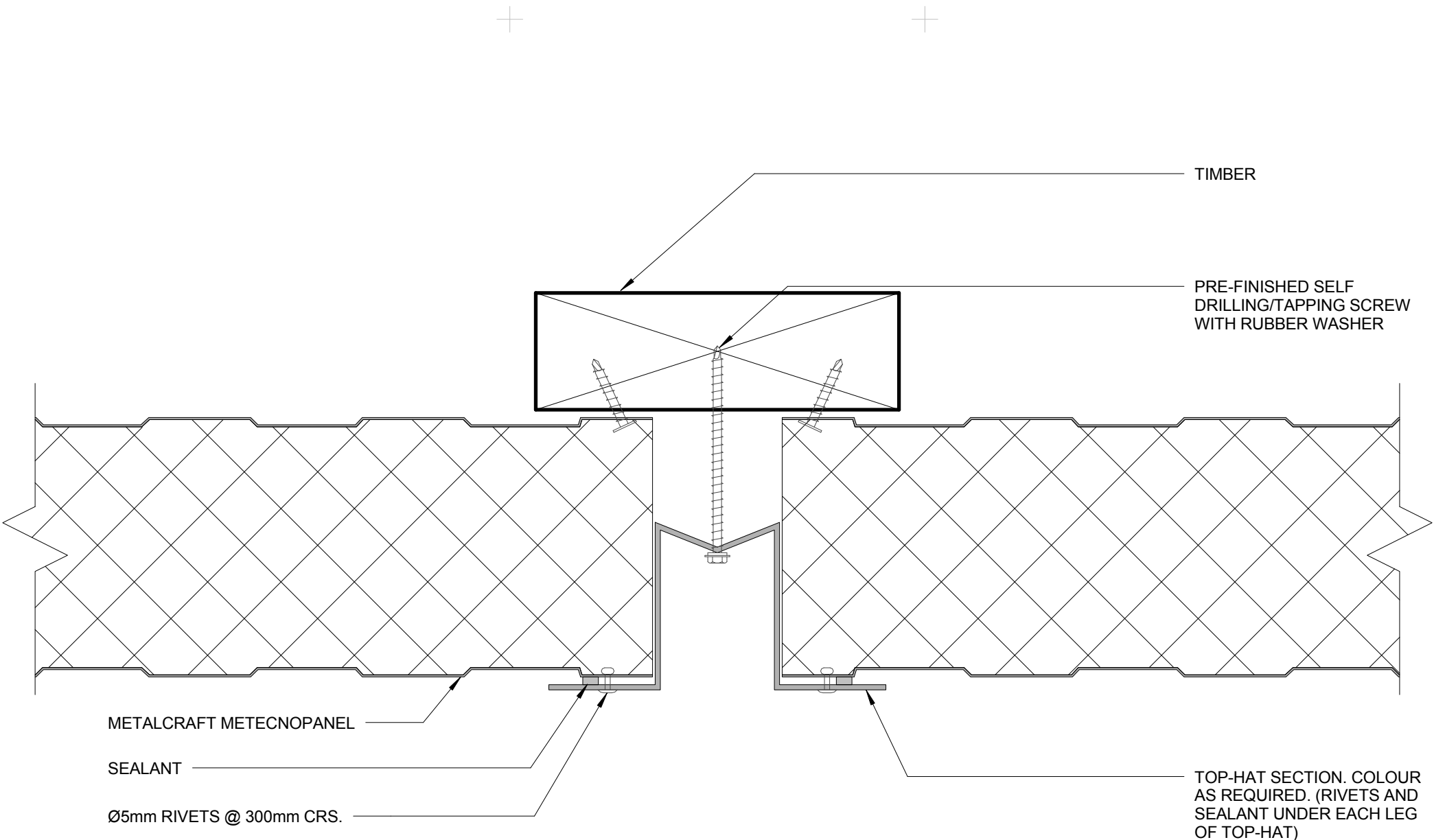
DOUBLE GLAZING WINDOW JOINERY



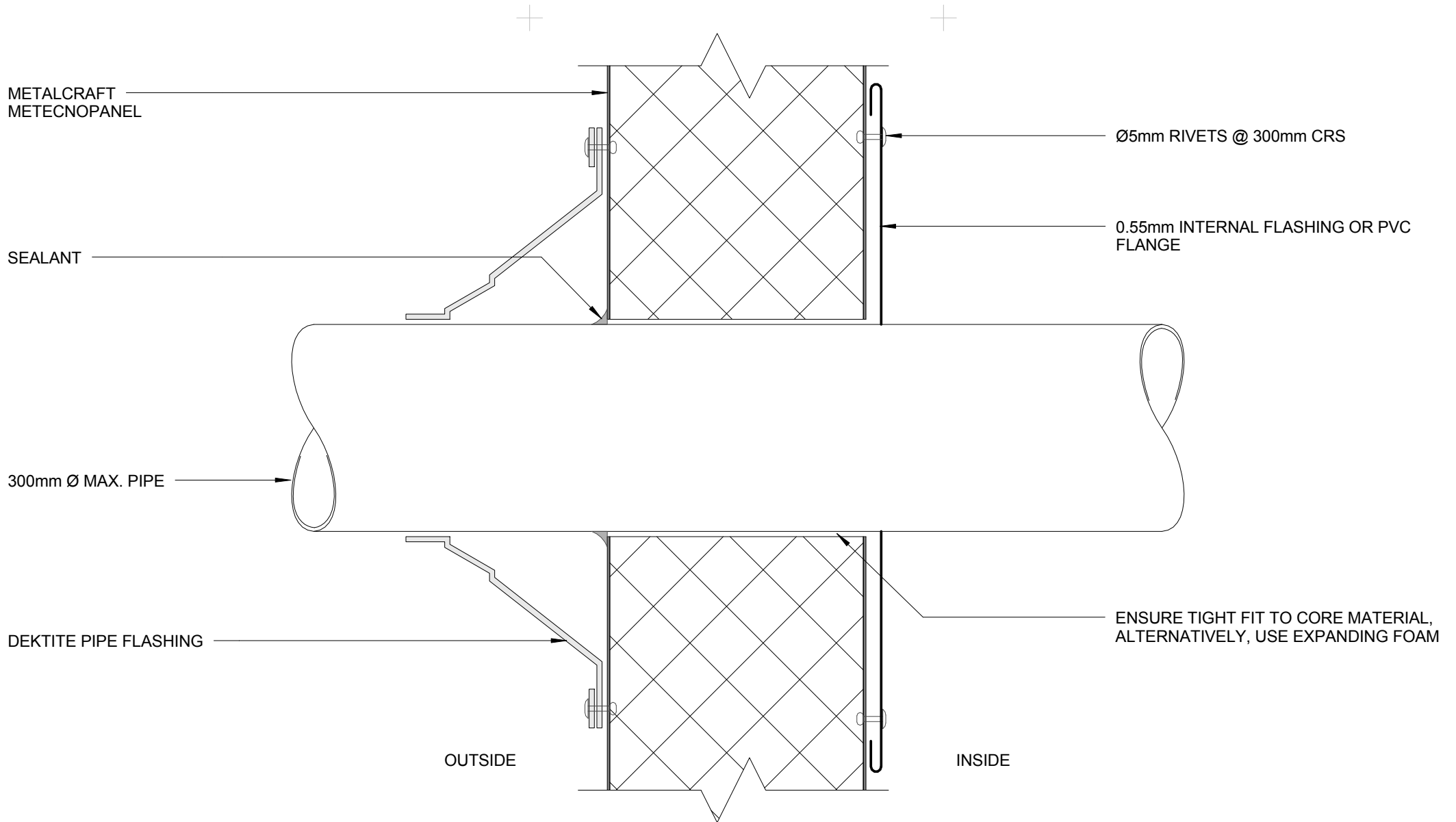
WINDOW HEAD



WINDOW SILL AND JAMB



VERTICAL JOINT TYPE C



PIPE PENETRATION w DEKTITE FLASHING

Metecnopanel Wall Details

Reference MPWD

Date 2016

Scale 1 : 2

Sheet

05 / 20

METALCRAFT
METECNOPANEL

0.55mm INTERNAL FLASHING OR PVC
FLANGE

SEALANT

Ø5mm RIVETS @ 300mm CRS

0.55mm INTERNAL FLASHING OR PVC
FLANGE

300mm Ø MAX. PIPE

SEALANT

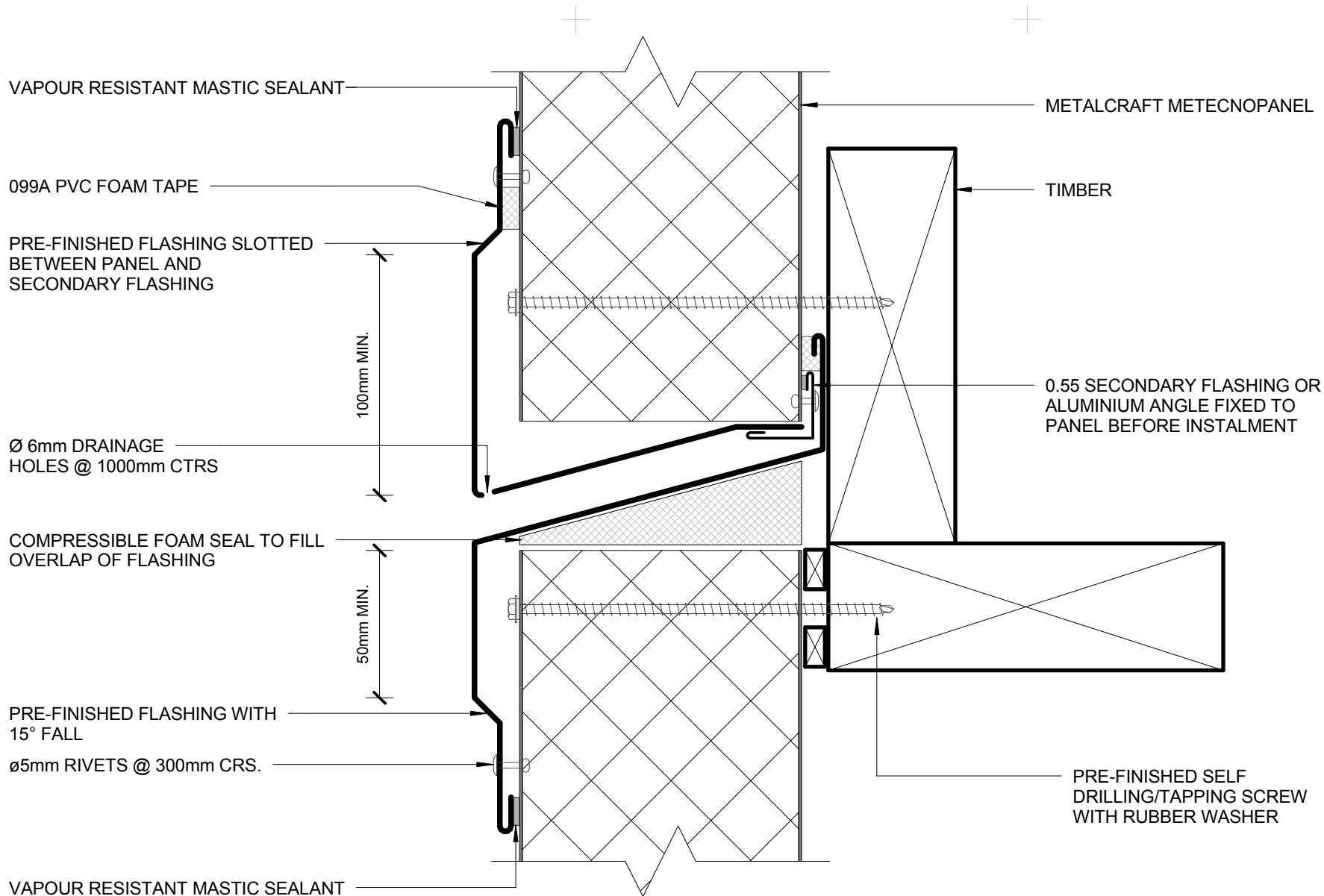
ENSURE TIGHT FIT TO CORE MATERIAL,
ALTERNATIVELY, USE EXPANDING FOAM

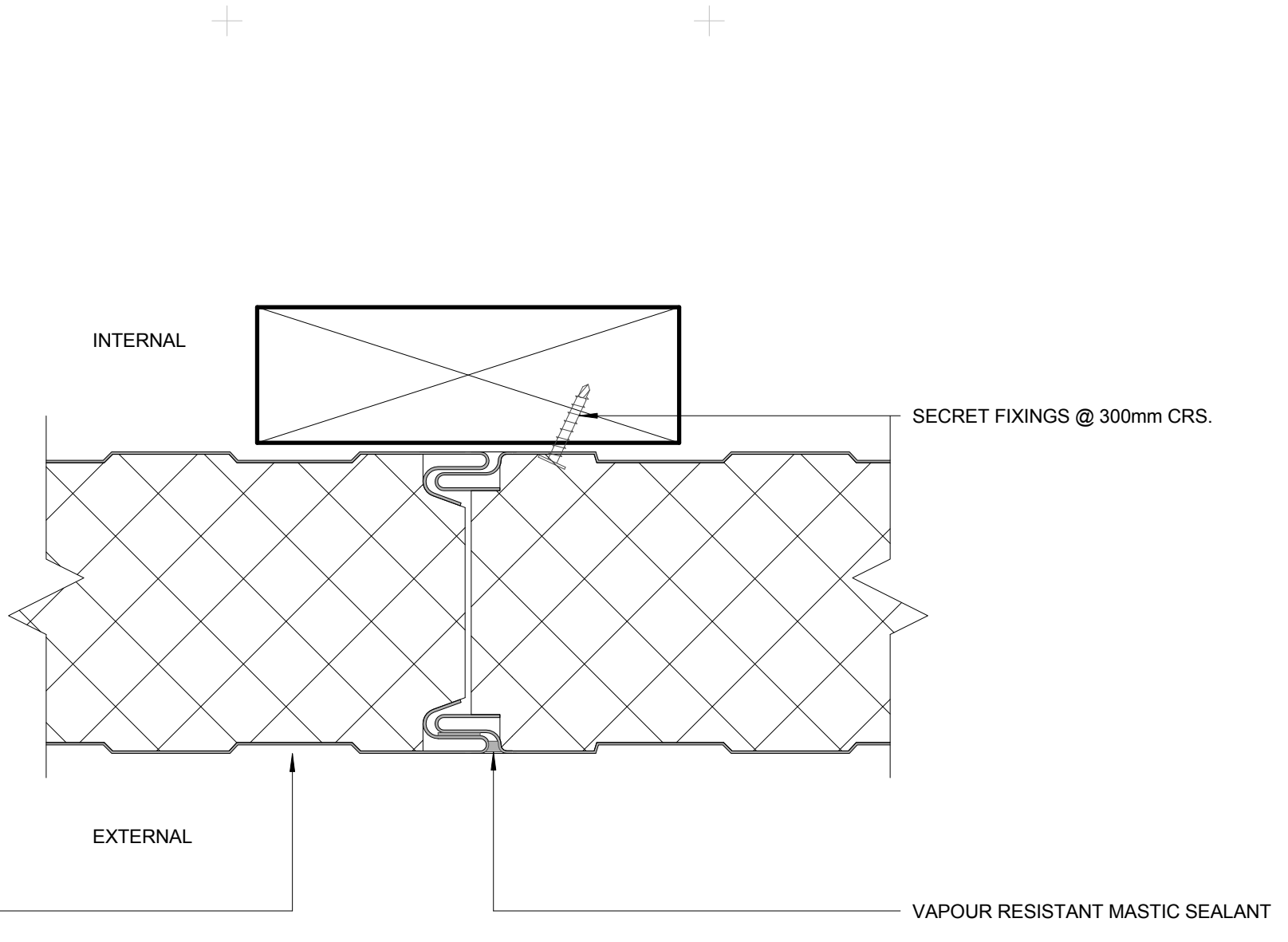
SEALANT

OUTSIDE

INSIDE

PIPE PENETRATION w PVC FLANGE





METALCRAFT
METECNOPANEL

VAPOUR RESISTANT MASTIC SEALANT

PRE-FINISHED SELF DRILLING/TAPPING
SCREW WITH RUBBER WASHER

TIMBER

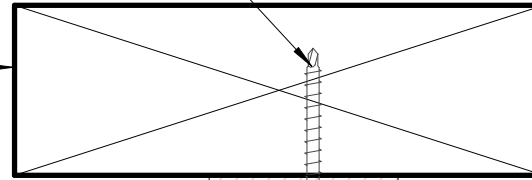
5mm ALUMINIUM
ANGLE CLEAT

ø5mm RIVETS

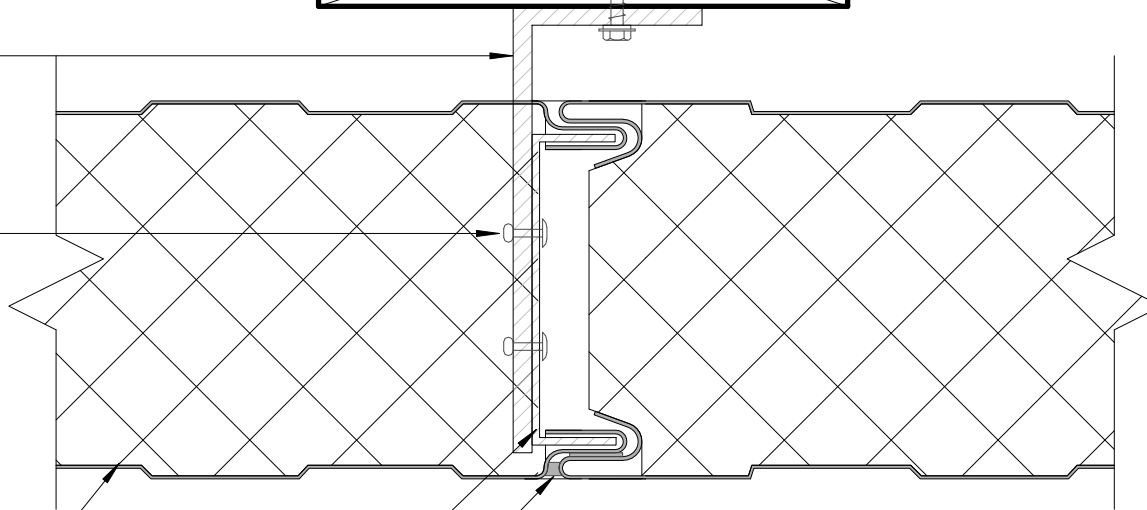
METALCRAFT
METECNOPANEL

ALUMINIUM BASE
CAP 300mm LONG MIN

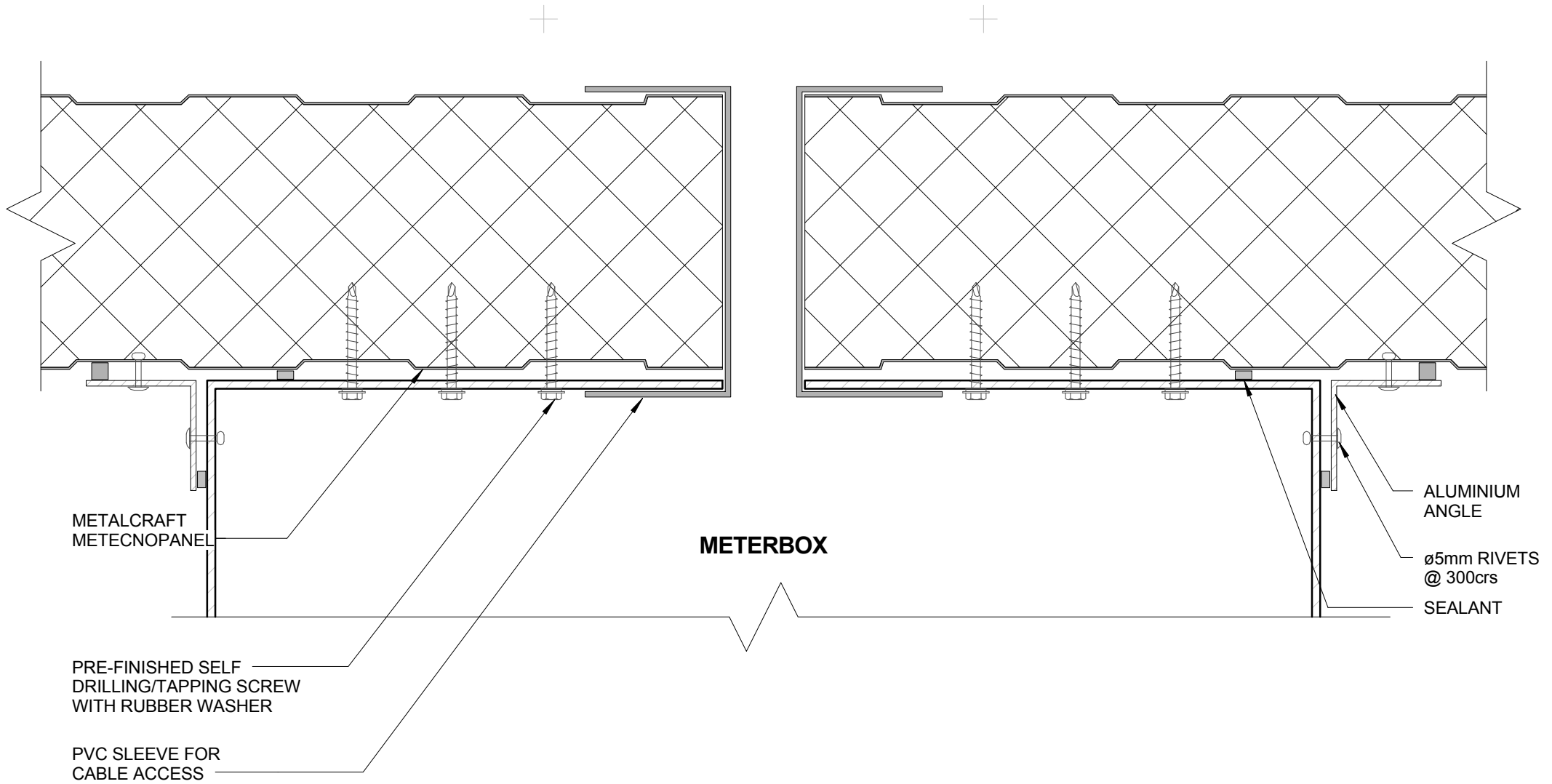
VAPOUR RESISTANT
MASTIC SEALANT



INTERNAL



EXTERNAL



METERBOX JAMB HEAD AND SILL DETAIL

Metecnopanel Wall Details

Reference MPWD

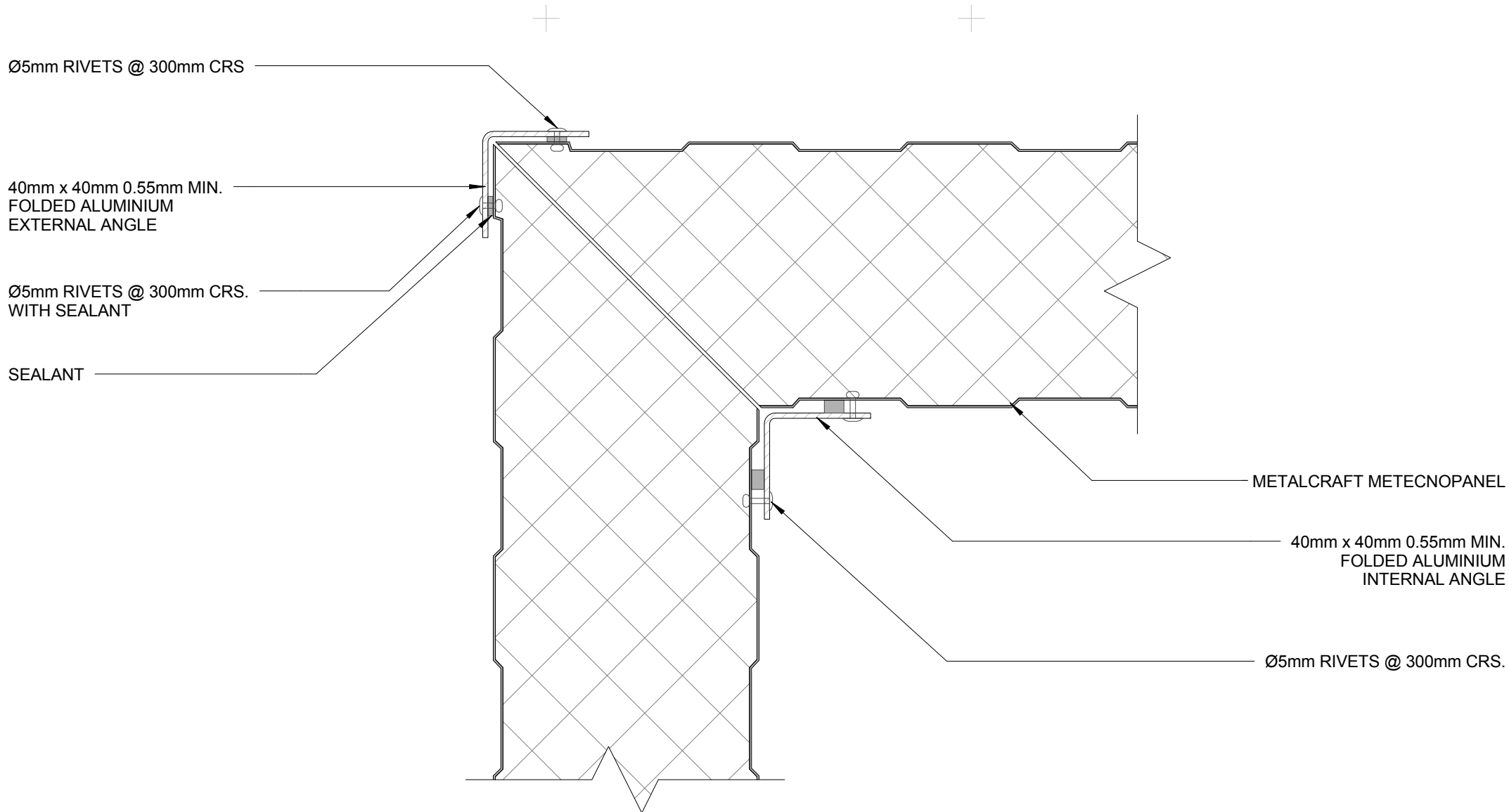
Date 2016

Scale 1 : 2

Sheet

10 / 20

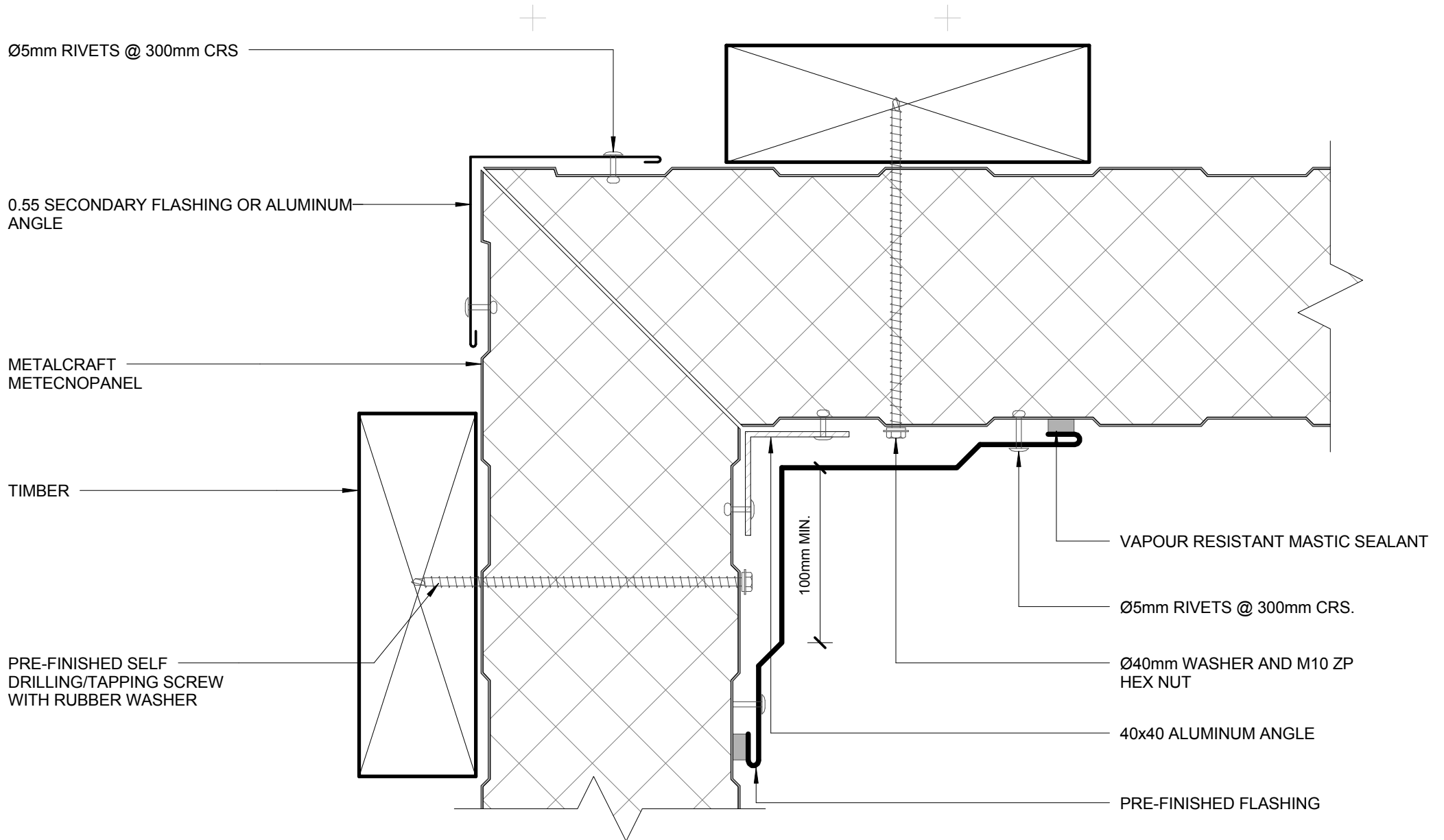
DISCLAIMER:
 All details are to be used for indicative purposes only and the designer should consult both the MRM code of practice version 2.2 /2012, E2 and all other relevant building codes
 Details of the supporting mechanisms are indicative only. Compliance of the supporting mechanisms is the responsibility of the designer. Construction detail can vary for wall cladding. The underlay is detailed as a single line for simplicity and is indicative only. Building paper type and method of installation should comply with underlay manufacturers recommendations and NZBC regulations.



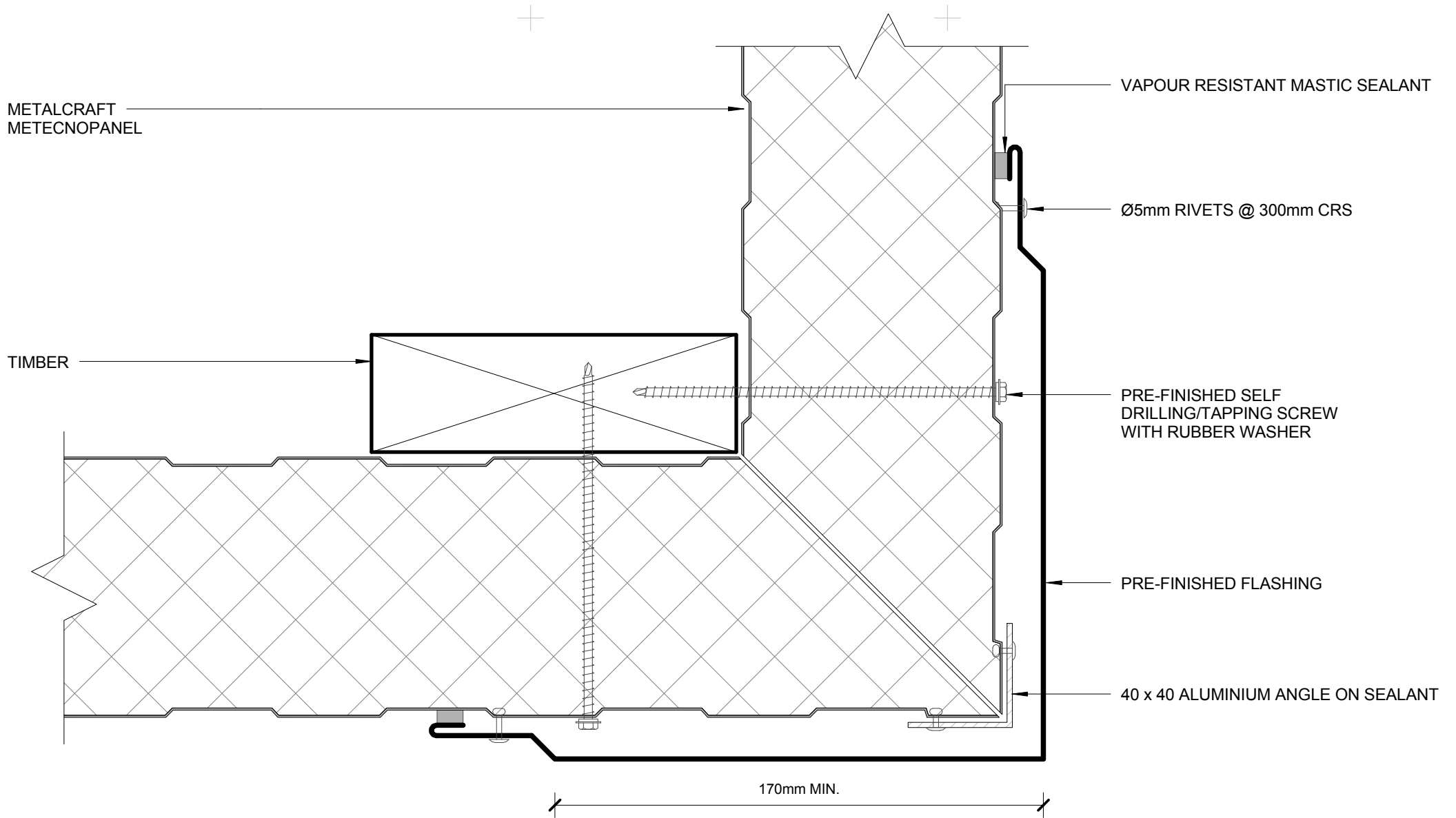
NOTE:
ALUMINIUM ANGLES CAN BE
REPLACED WITH STEEL

INTERNAL/EXTERNAL CORNER DETAIL

Metecnopanel Wall Details



ALTERNATIVE INTERNAL CORNER



METALCRAFT
METECPANEL

TIMBER

VAPOUR RESISTANT MASTIC SEALANT

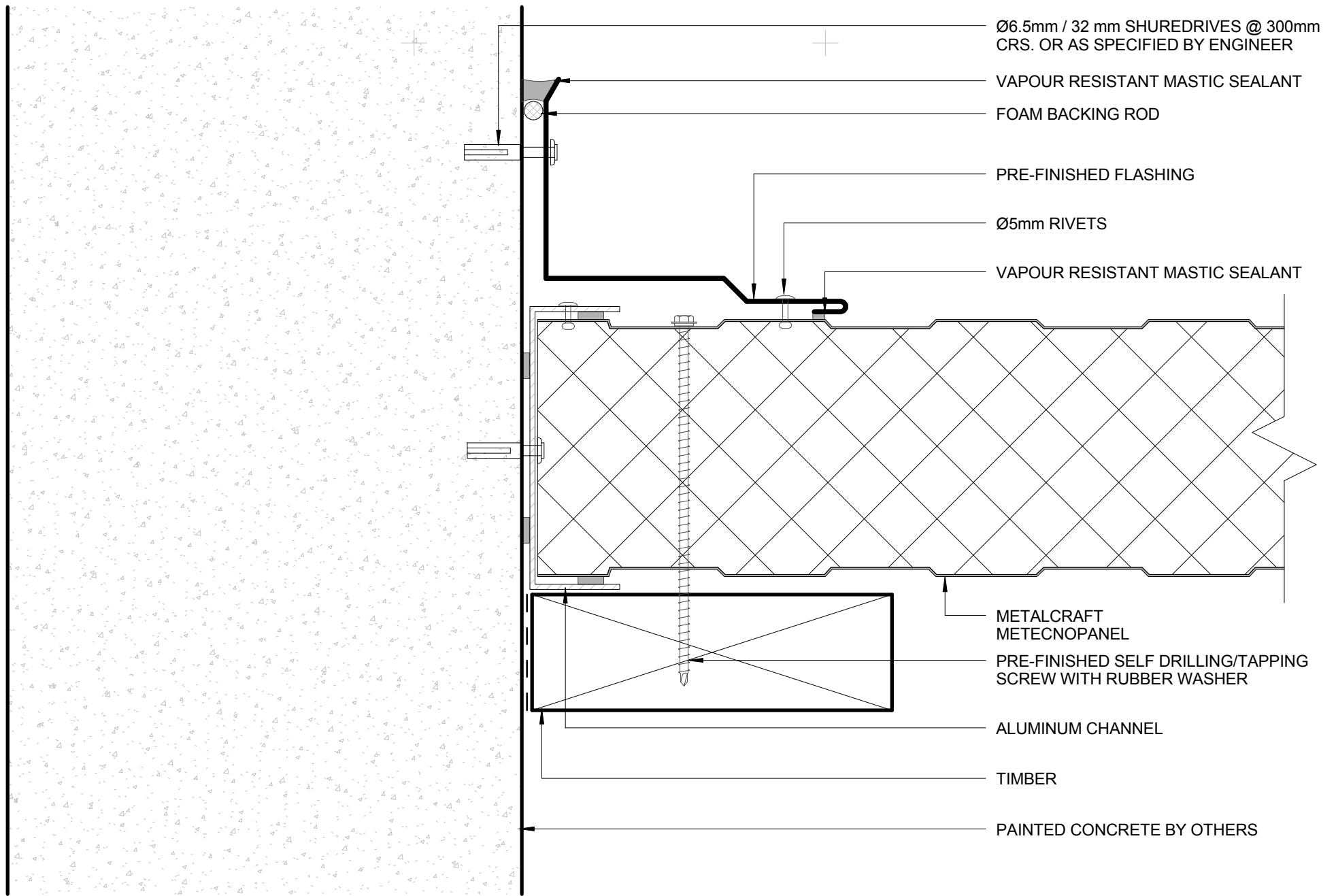
Ø5mm RIVETS @ 300mm CRS

PRE-FINISHED SELF
DRILLING/TAPPING SCREW
WITH RUBBER WASHER

PRE-FINISHED FLASHING

40 x 40 ALUMINIUM ANGLE ON SEALANT

170mm MIN.



Ø5mm RIVETS @ 300mm CRS

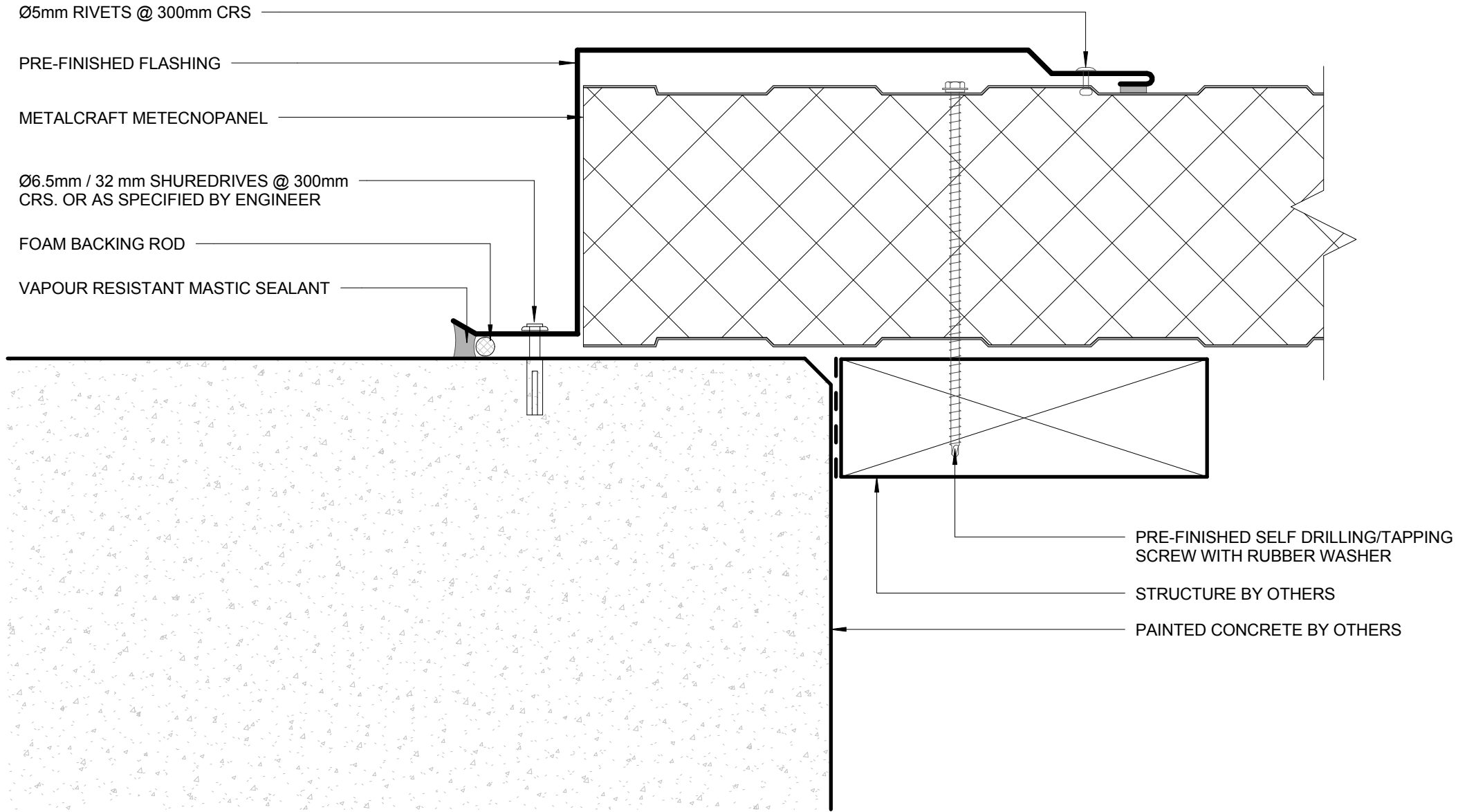
PRE-FINISHED FLASHING

METALCRAFT METECNOPANEL

Ø6.5mm / 32 mm SHUREDRIVES @ 300mm
CRS. OR AS SPECIFIED BY ENGINEER

FOAM BACKING ROD

VAPOUR RESISTANT MASTIC SEALANT

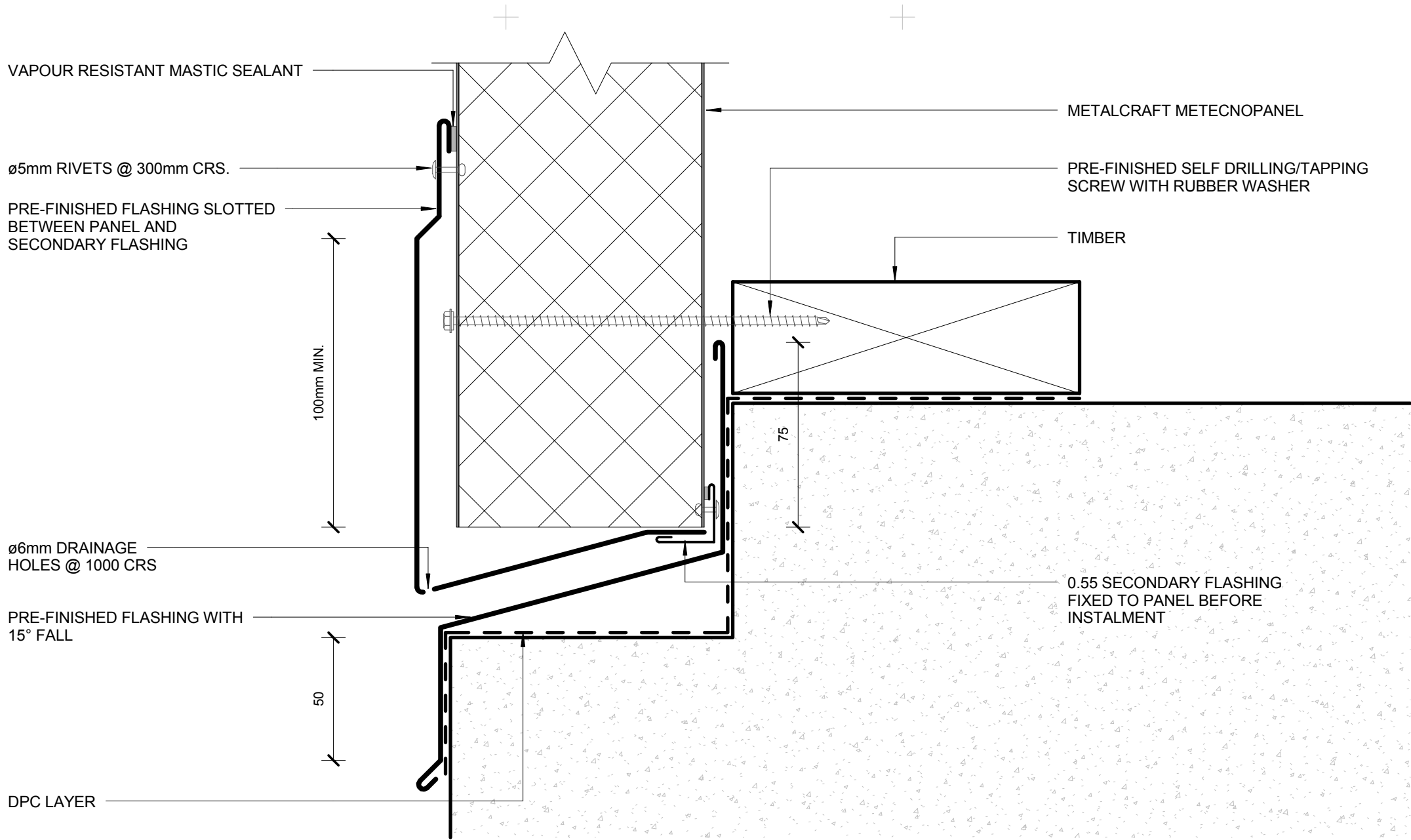


PRE-FINISHED SELF DRILLING/TAPPING
SCREW WITH RUBBER WASHER

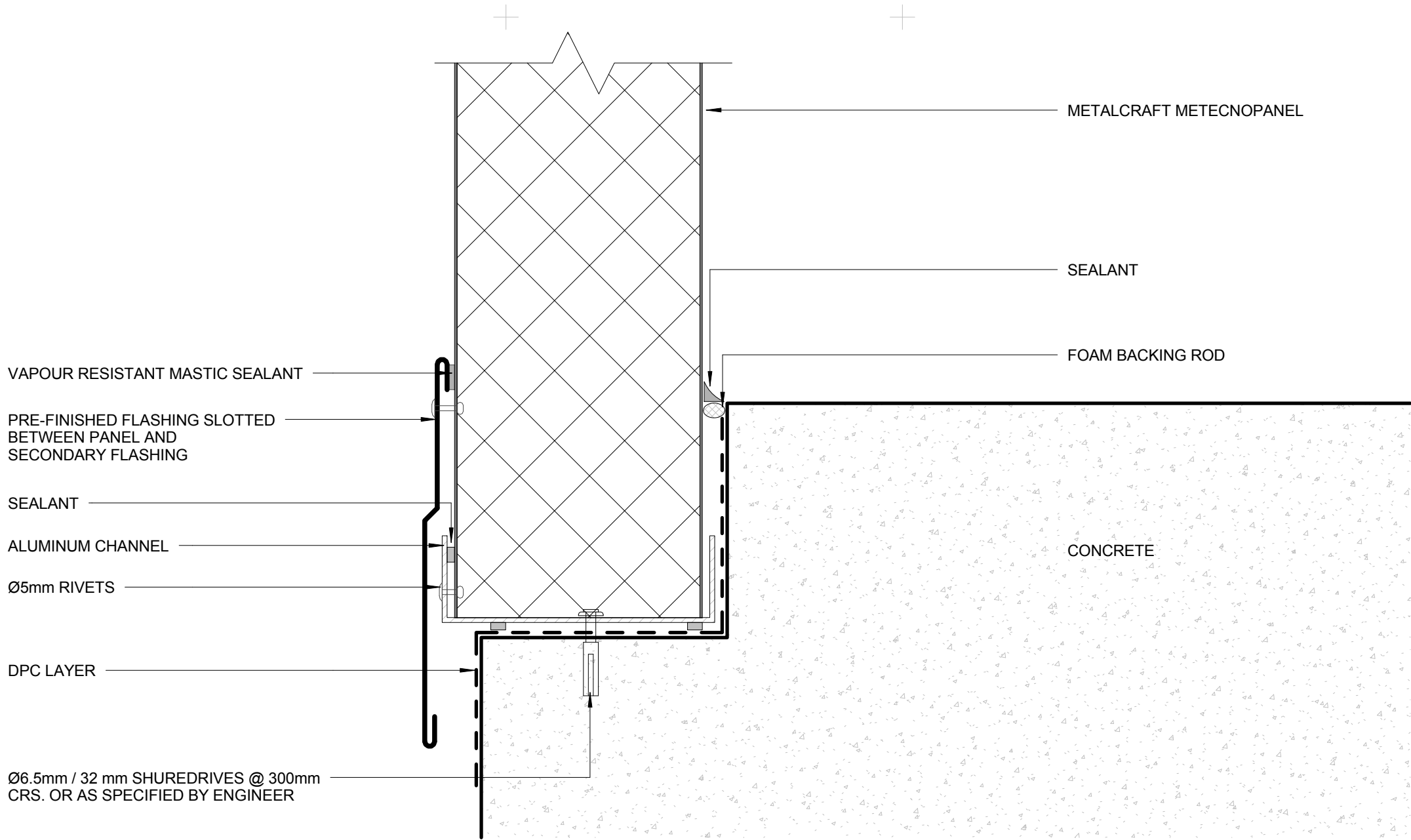
STRUCTURE BY OTHERS

PAINTED CONCRETE BY OTHERS

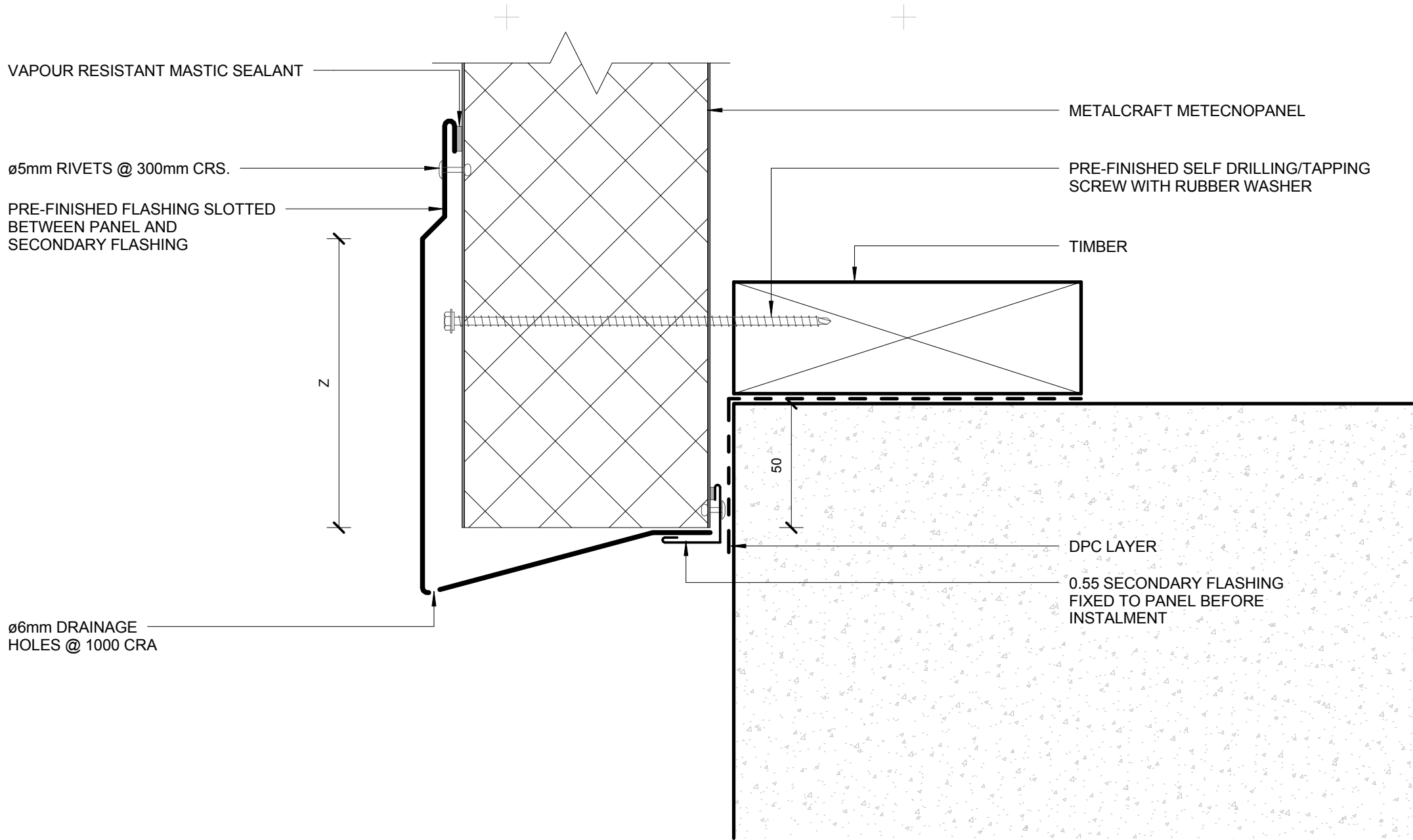
ABUTMENT 02



BOTTOM OF CLADDING 01



BOTTOM OF CLADDING 02



VAPOUR RESISTANT MASTIC SEALANT

Ø5mm RIVETS @ 300mm CRS.

PRE-FINISHED FLASHING SLOTTED BETWEEN PANEL AND SECONDARY FLASHING

Z

Ø6mm DRAINAGE HOLES @ 1000 CRA

METALCRAFT METECNOPANEL

PRE-FINISHED SELF DRILLING/TAPPING SCREW WITH RUBBER WASHER

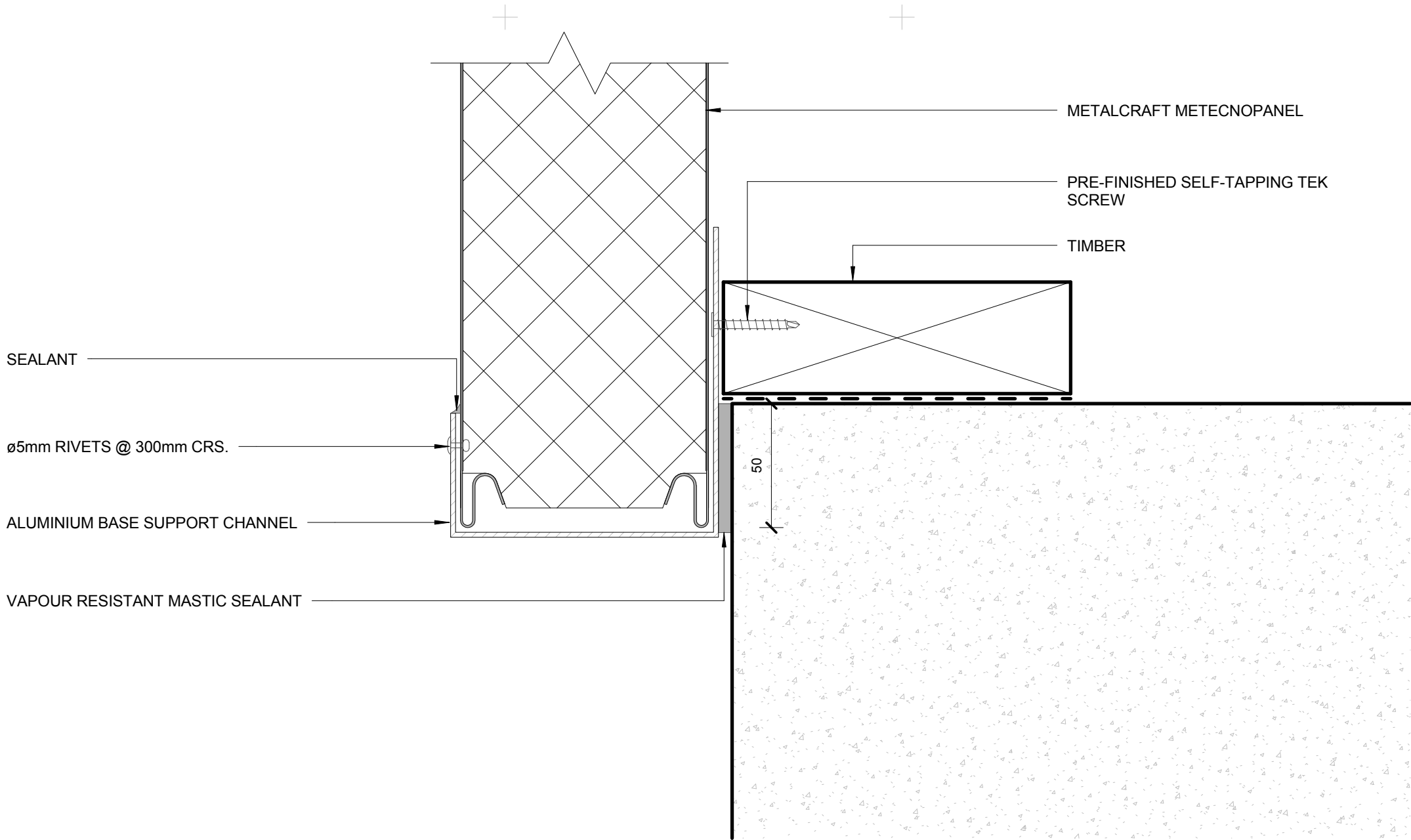
TIMBER

50

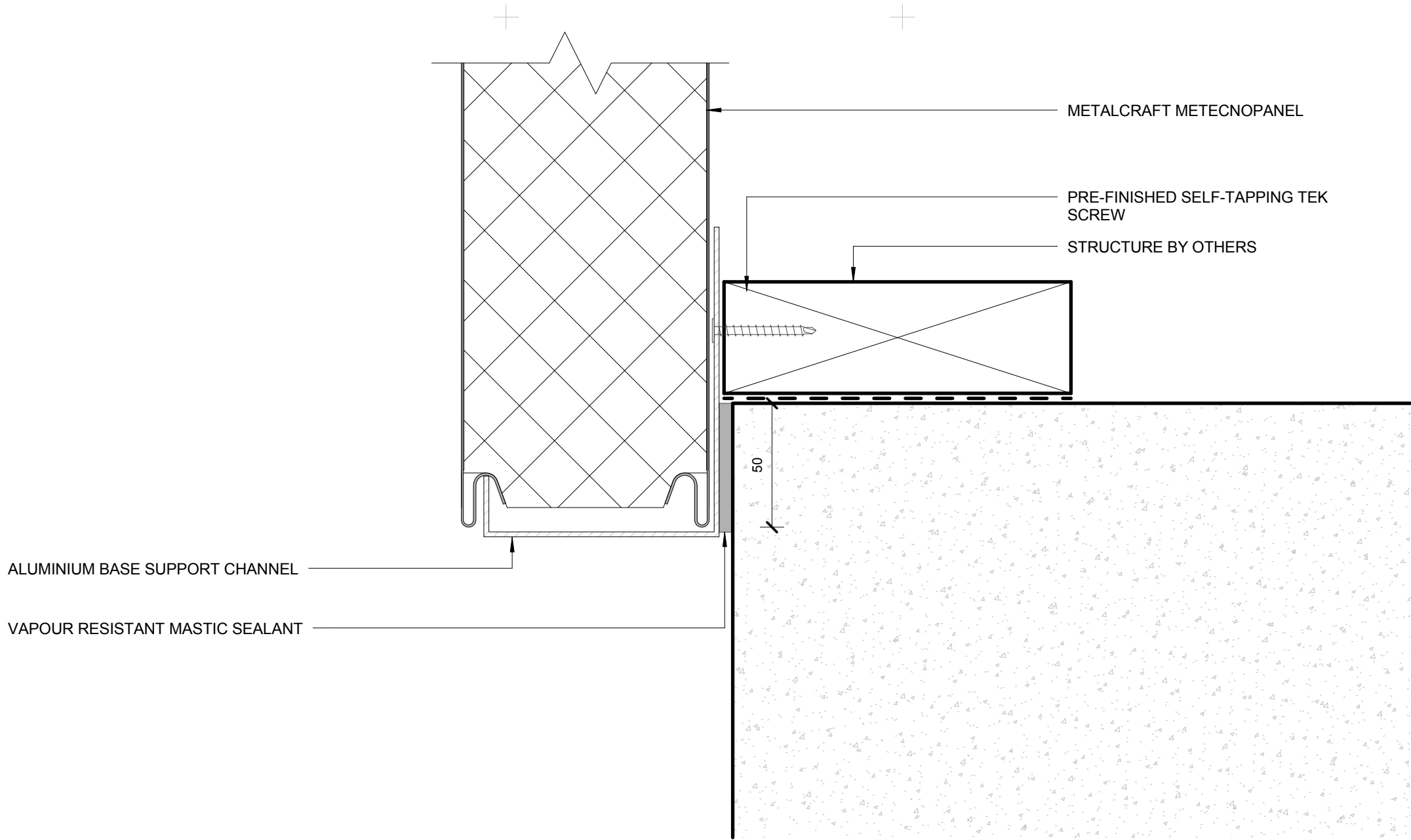
DPC LAYER

0.55 SECONDARY FLASHING FIXED TO PANEL BEFORE INSTALMENT

BOTTOM OF CLADDING 03



BOTTOM OF CLADDING 04



ALUMINIUM BASE SUPPORT CHANNEL

VAPOUR RESISTANT MASTIC SEALANT

METALCRAFT METECNOPANEL

PRE-FINISHED SELF-TAPPING TEK SCREW

STRUCTURE BY OTHERS

50

BOTTOM OF CLADDING 05