

# Bevelback Weatherboard

## RESIDENTIAL HORIZONTAL CLADDING

### DETAIL LIST

00 / 23	COVER SHEET
01 / 23	PARAPET AND BALUSTRADE CAPPING
02 / 23	SOFFIT
03 / 23	FLUSH WINDOW HEAD
04 / 23	FLUSH WINDOW SILL
05 / 23	FLUSH WINDOW JAMB
06 / 23	RECESSED WINDOW HEAD
07 / 23	RECESSED WINDOW SILL
08 / 23	RECESSED WINDOW JAMB
09 / 23	BUTT WINDOW HEAD
10 / 23	BUTT WINDOW SILL
11 / 23	BUTT WINDOW JAMB
12 / 23	METERBOX HEAD
13 / 23	METERBOX SILL
14 / 23	METERBOX JAMB
15 / 23	INTERNAL CORNER
16 / 23	EXTERNAL CORNER
17 / 23	INTERNAL CORNER BOX TYPE
18 / 23	EXTERNAL CORNER BOX TYPE
19 / 23	SOAKER FLASHING
20 / 23	VERTICAL BUTT JOINT
21 / 23	BOTTOM OF CLADDING (FLUSH)
22 / 23	BOTTOM OF CLADDING (RECESSED)
23 / 23	3D WINDOW FLASHINGS

**ACCEPTABLE SOLUTION** AS PER E2/ASI

SITUATION 1	SITUATION 2	SITUATION 3
1. LOW, MEDIUM, HIGH WIND ZONES, WHERE ROOF PITCH $\geq 10^\circ$	1. ALL ROOF PITCHES IN VERY HIGH WIND ZONE 2. LOW, MEDIUM, HIGH WIND ZONES WHERE ROOF PITCH $\leq 10^\circ$	1. FOR ALL ROOF PITCHES IN EXTRA HIGH WIND ZONES
Z MIN. 50mm	MIN. 70mm	MIN. 90mm

**ALTERNATIVE SOLUTION** AS PER MRM CODE OF PRACTICE

CATEGORY A	CATEGORY B
1. NORMAL EXPOSURE 2. ROOF PITCH $>10^\circ$	1. EXPOSED (HIGHER RISK) & WIND LOAD EXCEEDS 1.5 kPa. 2. ROOF PITCH $<10^\circ$
Z MIN. 50mm (VERTICALLY DOWN FACE - SMOOTH) MIN. 75mm (VERTICALLY DOWN FACE - PROFILED)	MIN. 75mm (VERTICALLY DOWN FACE - SMOOTH) MIN. 100mm (VERTICALLY DOWN FACE - PROFILED)

PERMEABLE WALL UNDERLAY TO PROVIDE SEPARATION OF METAL CAPPING AND CLADDING WITH TIMBER, SHOWN DASHED

METALCRAFT BEVELBACK WEATHERBOARD CLADDING

PRE-FINISHED POP RIVET BEDDED IN SILICONE OR PRE-FINISHED 8g WAFER-TEK SCREW

PRE-FINISHED TEK SCREW WITH RUBBER WASHER OR SHANK NAIL

PERMEABLE WALL UNDERLAY, SHOWN DASHED

MIN. 5.00°

3mm MIN CLEARANCE

Z

PRE-FINISHED PARAPET CAP FLASHING  
NO FIXINGS ON TOP OF FLASHING

CONTINUOUS H3.1 TIMBER PACKING TO GIVE 5° FALL INWARDS

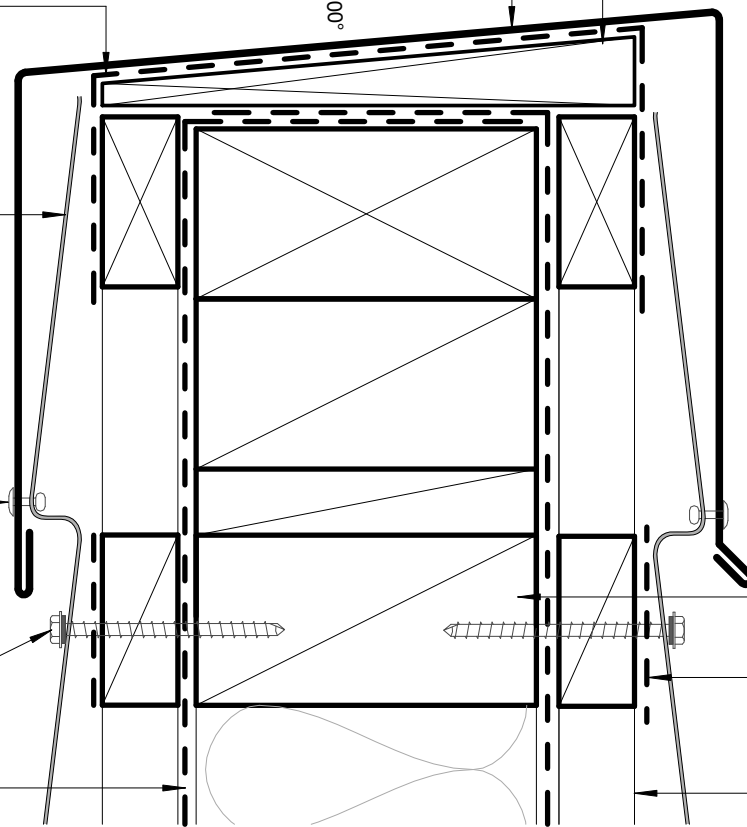
25mm CLEARANCE

Z

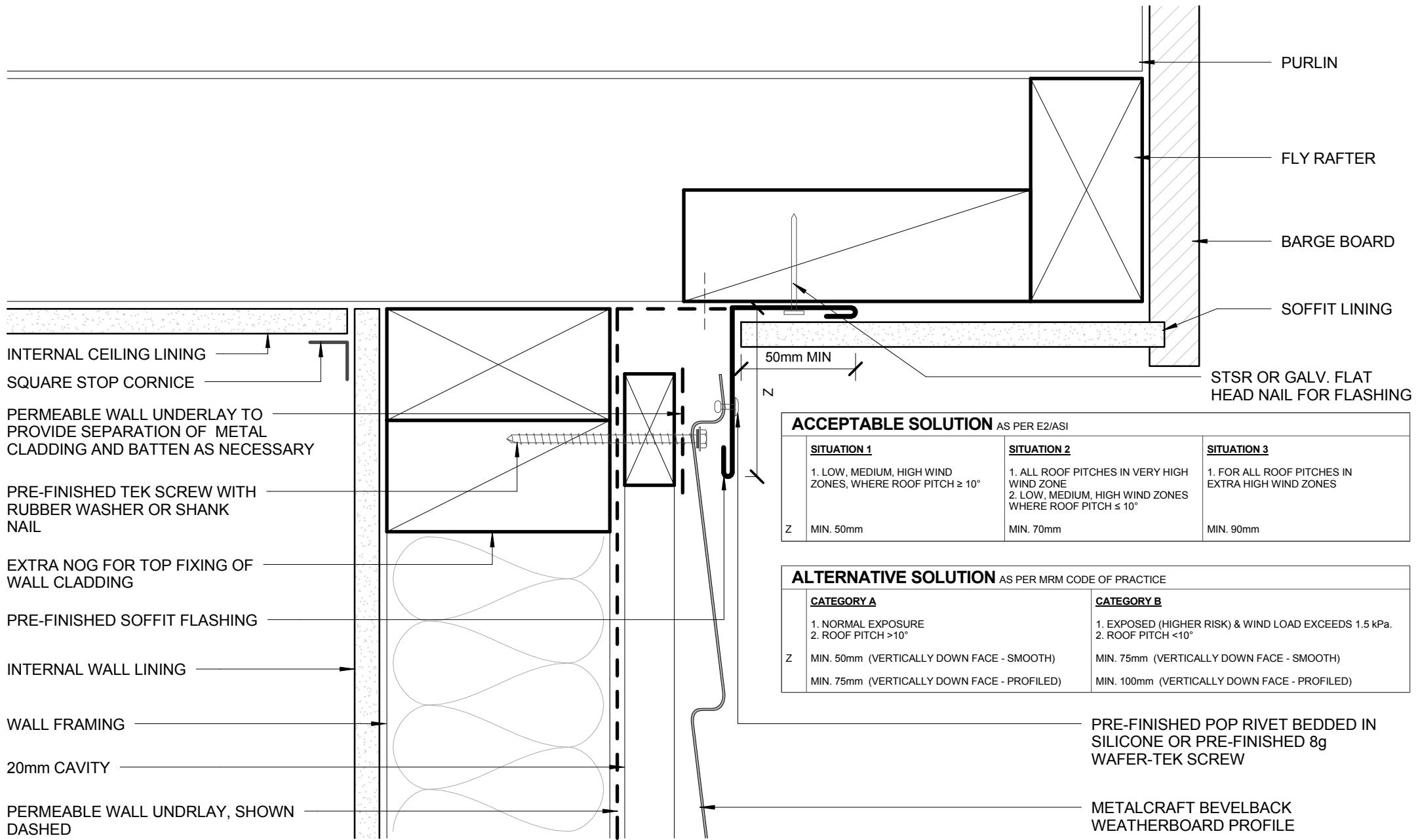
WALL FRAMING

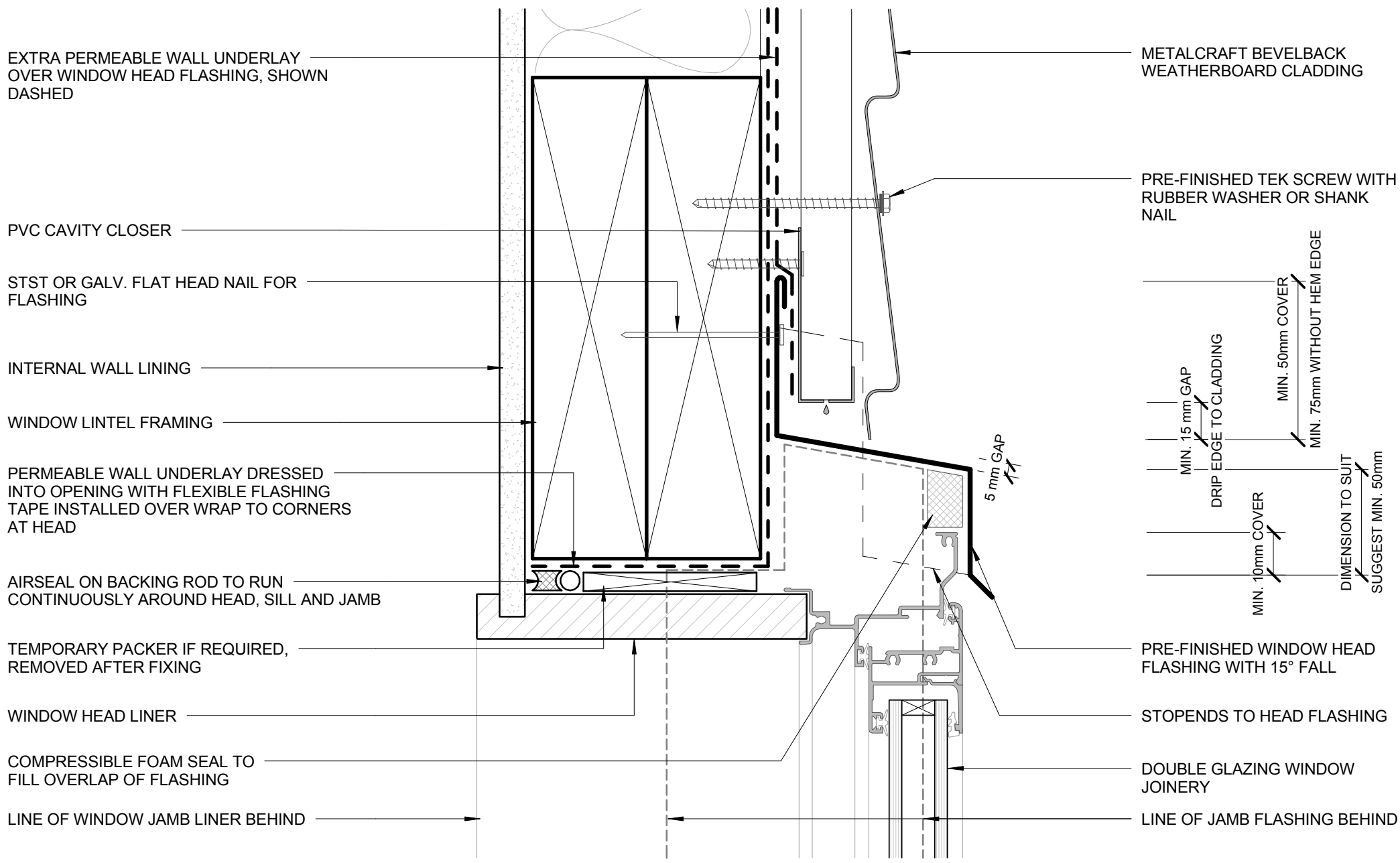
PERMEABLE WALL UNDERLAY TO PROVIDE SEPARATION OF METAL CLADDING AND BATTEN AS NECESSARY

20mm CAVITY



**PARAPET AND BALUSTRADE CAPPING**  
RESIDENTIAL HORIZONTAL CLADDING





EXTRA PERMEABLE WALL UNDERLAY OVER WINDOW HEAD FLASHING, SHOWN DASHED

PVC CAVITY CLOSER

STST OR GALV. FLAT HEAD NAIL FOR FLASHING

INTERNAL WALL LINING

WINDOW LINTEL FRAMING

PERMEABLE WALL UNDERLAY DRESSED INTO OPENING WITH FLEXIBLE FLASHING TAPE INSTALLED OVER WRAP TO CORNERS AT HEAD

AIRSEAL ON BACKING ROD TO RUN CONTINUOUSLY AROUND HEAD, SILL AND JAMB

TEMPORARY PACKER IF REQUIRED, REMOVED AFTER FIXING

WINDOW HEAD LINER

COMPRESSIBLE FOAM SEAL TO FILL OVERLAP OF FLASHING

LINE OF WINDOW JAMB LINER BEHIND

METALCRAFT BEVELBACK WEATHERBOARD CLADDING

PRE-FINISHED TEK SCREW WITH RUBBER WASHER OR SHANK NAIL

MIN. 15 mm GAP  
 DRIP EDGE TO CLADDING  
 MIN. 50mm COVER  
 MIN. 75mm WITHOUT HEM EDGE

5 mm GAP

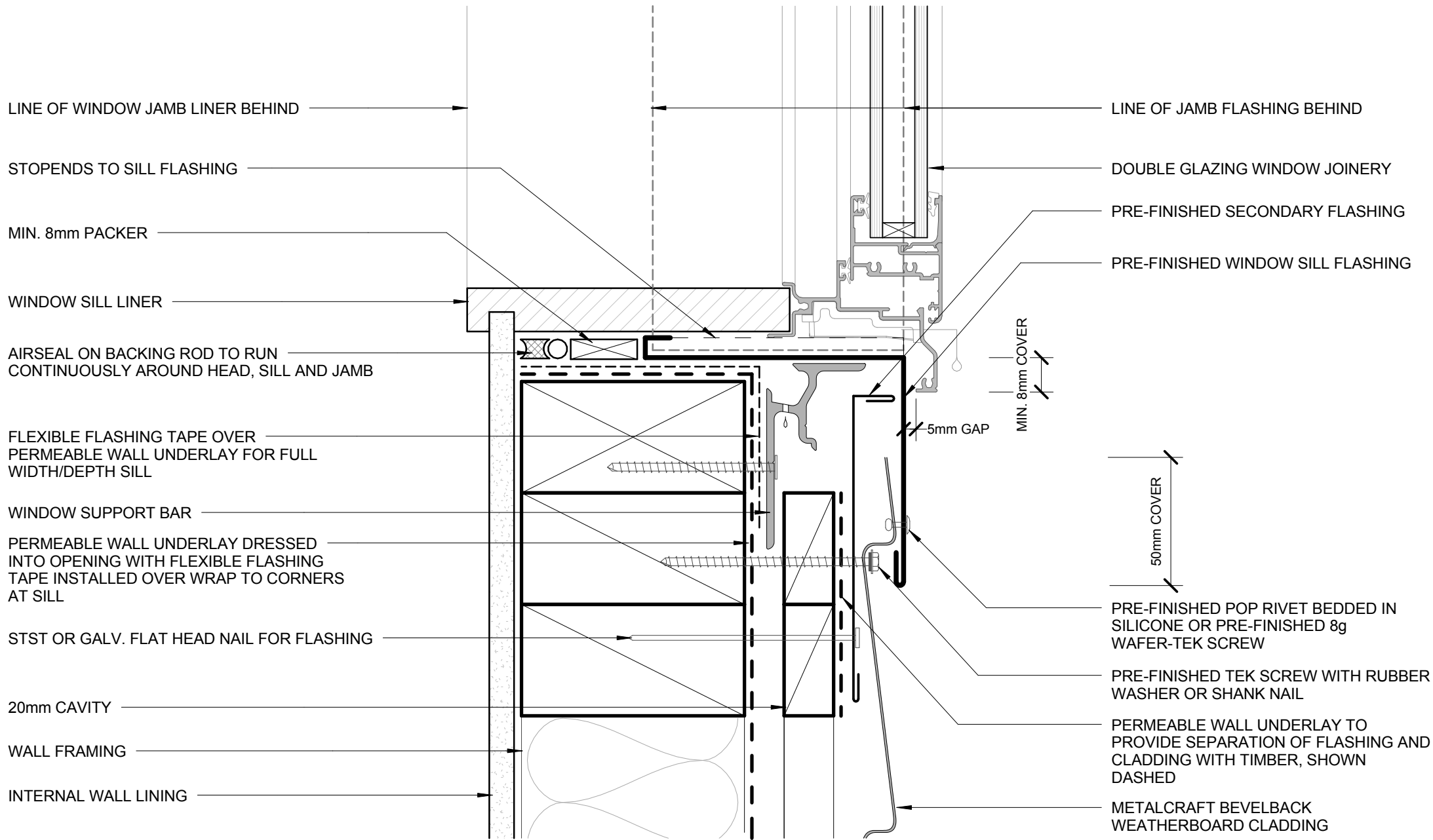
MIN. 10mm COVER  
 DIMENSION TO SUIT  
 SUGGEST MIN. 50mm

PRE-FINISHED WINDOW HEAD FLASHING WITH 15° FALL

STOPENDS TO HEAD FLASHING

DOUBLE GLAZING WINDOW JOINERY

LINE OF JAMB FLASHING BEHIND



LINE OF WINDOW JAMB LINER BEHIND

STOPENDS TO SILL FLASHING

MIN. 8mm PACKER

WINDOW SILL LINER

AIRSEAL ON BACKING ROD TO RUN CONTINUOUSLY AROUND HEAD, SILL AND JAMB

FLEXIBLE FLASHING TAPE OVER PERMEABLE WALL UNDERLAY FOR FULL WIDTH/DEPTH SILL

WINDOW SUPPORT BAR

PERMEABLE WALL UNDERLAY DRESSED INTO OPENING WITH FLEXIBLE FLASHING TAPE INSTALLED OVER WRAP TO CORNERS AT SILL

STST OR GALV. FLAT HEAD NAIL FOR FLASHING

20mm CAVITY

WALL FRAMING

INTERNAL WALL LINING

LINE OF JAMB FLASHING BEHIND

DOUBLE GLAZING WINDOW JOINERY

PRE-FINISHED SECONDARY FLASHING

PRE-FINISHED WINDOW SILL FLASHING

MIN. 8mm COVER

5mm GAP

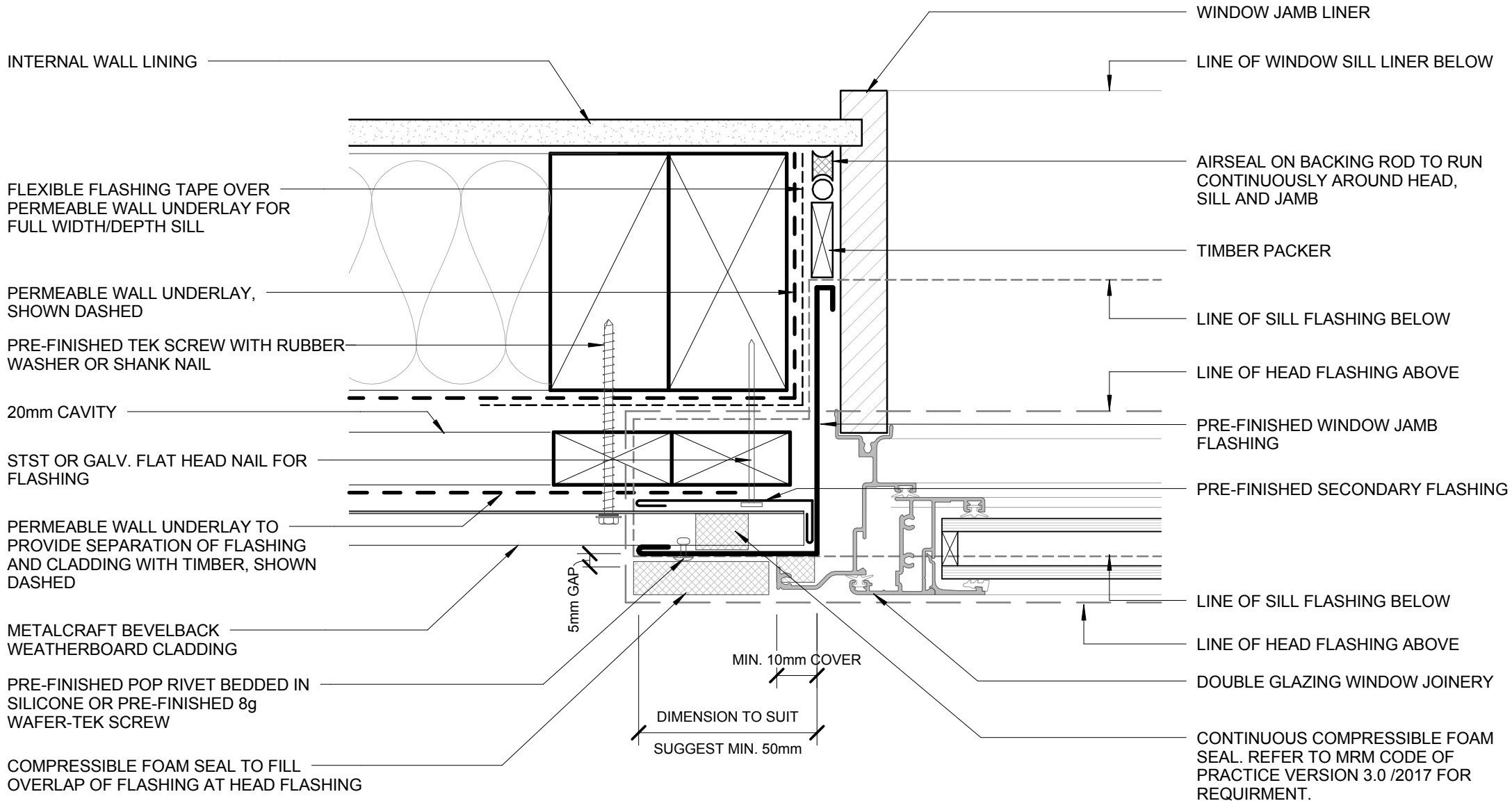
50mm COVER

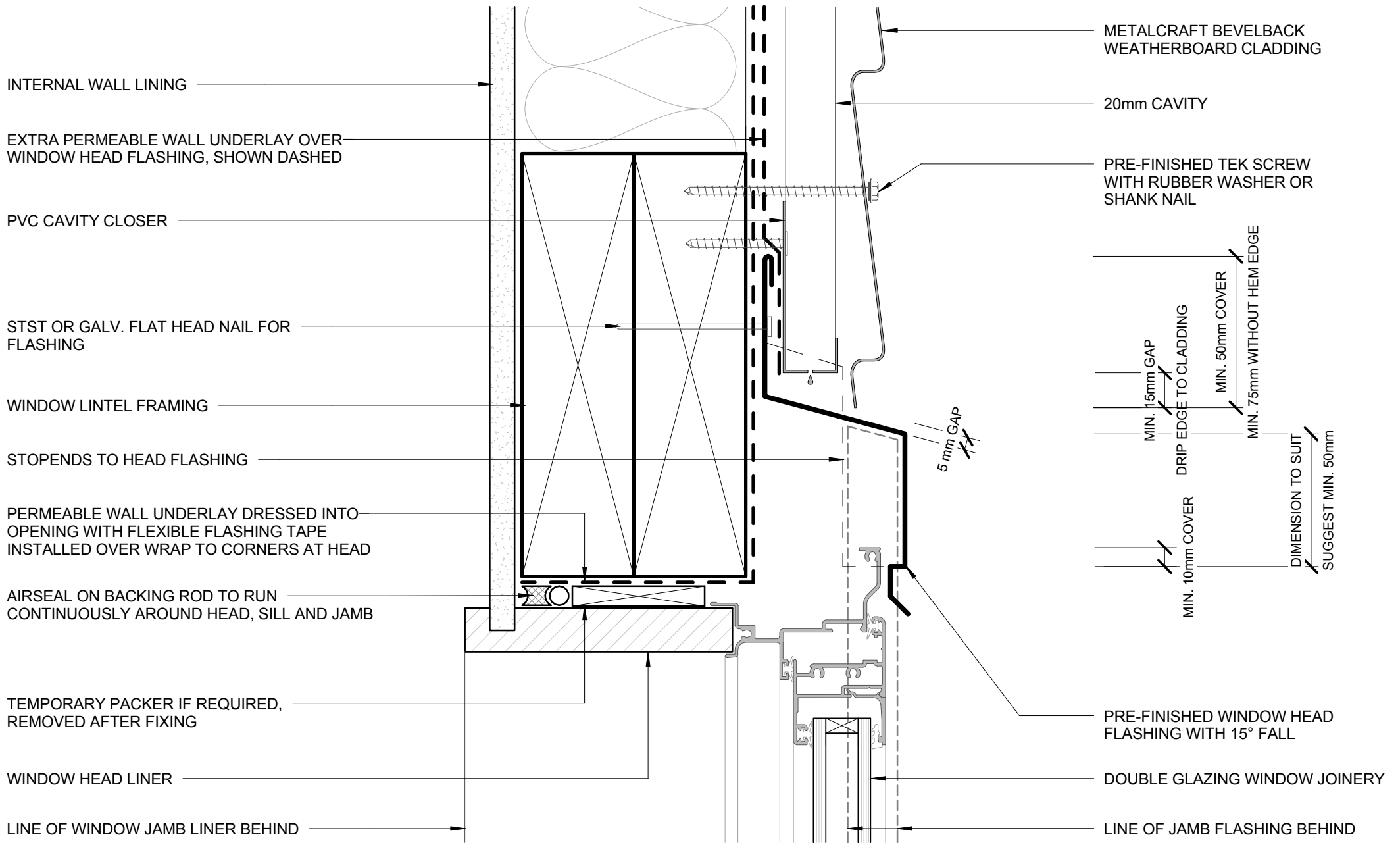
PRE-FINISHED POP RIVET BEDDED IN SILICONE OR PRE-FINISHED 8g WAFER-TEK SCREW

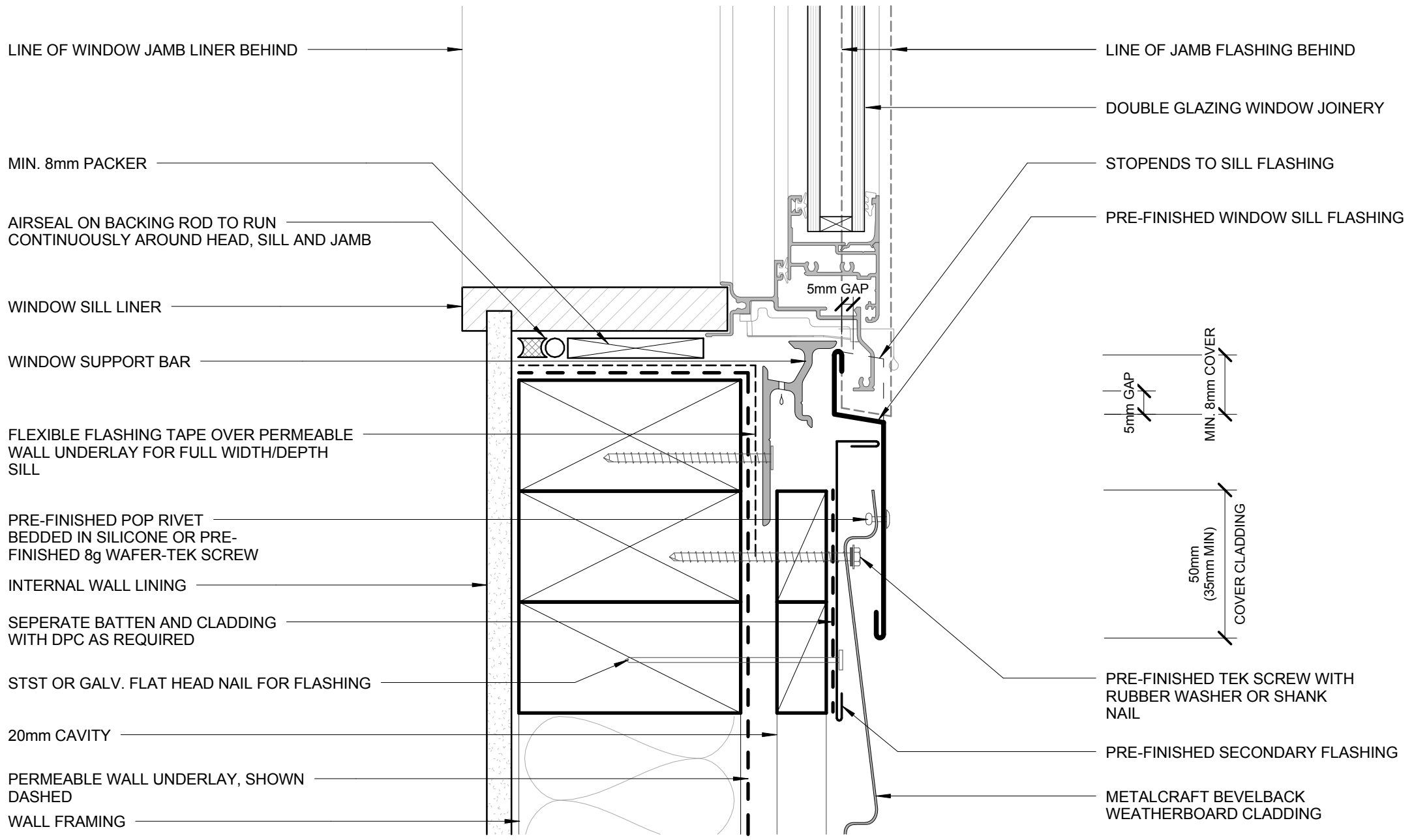
PRE-FINISHED TEK SCREW WITH RUBBER WASHER OR SHANK NAIL

PERMEABLE WALL UNDERLAY TO PROVIDE SEPARATION OF FLASHING AND CLADDING WITH TIMBER, SHOWN DASHED

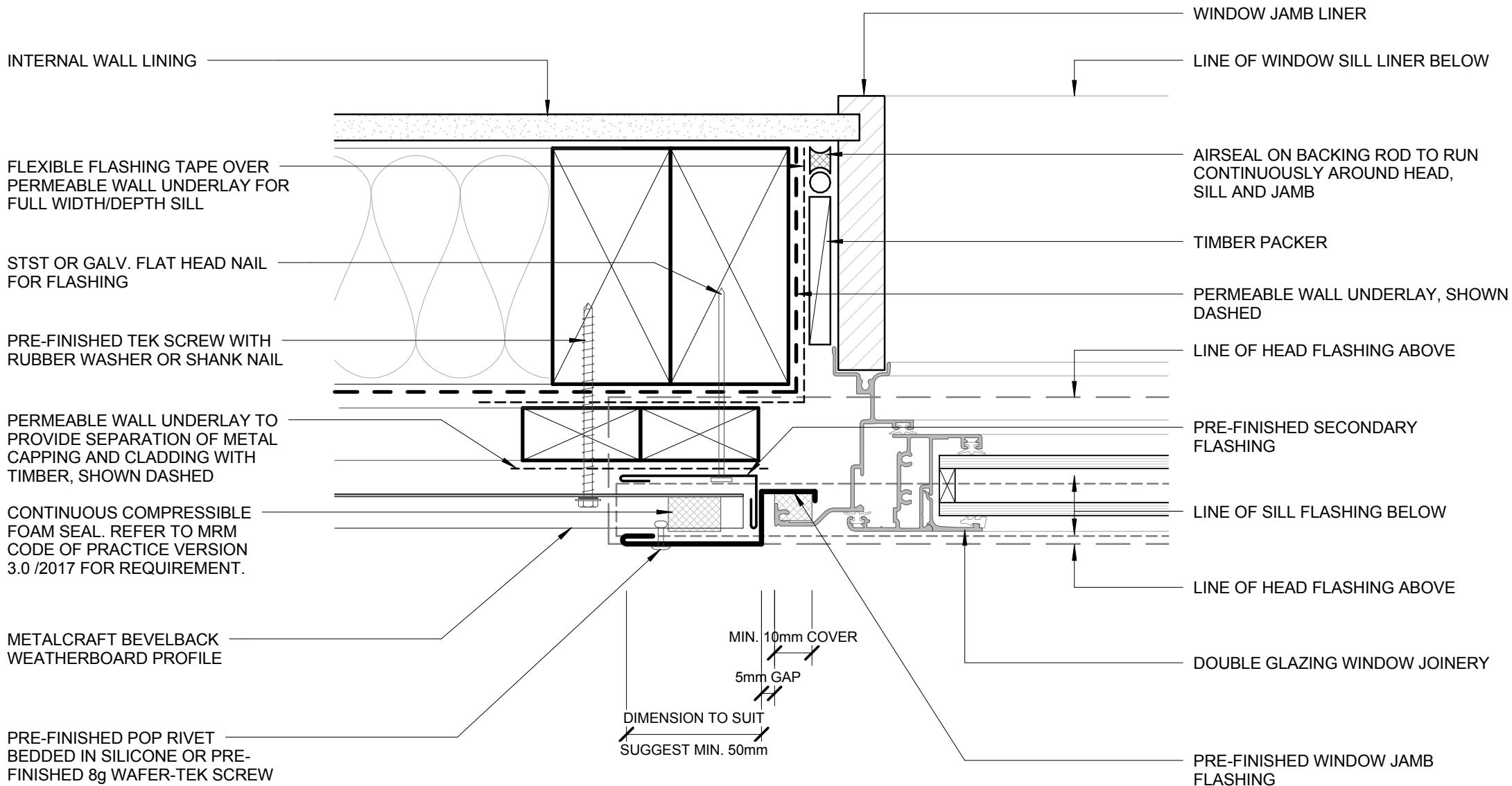
METALCRAFT BEVELBACK WEATHERBOARD CLADDING

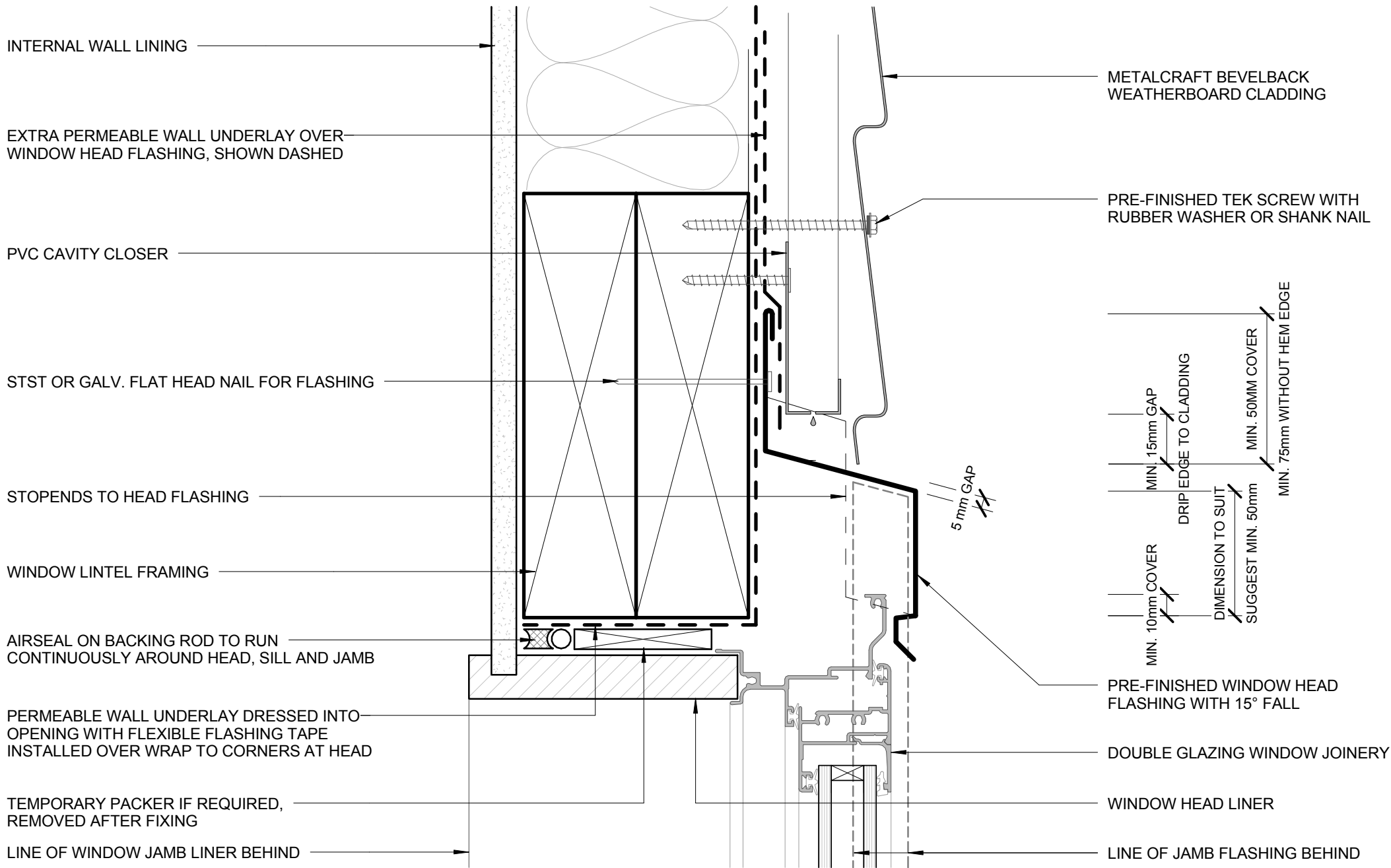












INTERNAL WALL LINING

EXTRA PERMEABLE WALL UNDERLAY OVER WINDOW HEAD FLASHING, SHOWN DASHED

PVC CAVITY CLOSER

ST/ST OR GALV. FLAT HEAD NAIL FOR FLASHING

STOPENDS TO HEAD FLASHING

WINDOW LINTEL FRAMING

AIRSEAL ON BACKING ROD TO RUN CONTINUOUSLY AROUND HEAD, SILL AND JAMB

PERMEABLE WALL UNDERLAY DRESSED INTO OPENING WITH FLEXIBLE FLASHING TAPE INSTALLED OVER WRAP TO CORNERS AT HEAD

TEMPORARY PACKER IF REQUIRED, REMOVED AFTER FIXING

LINE OF WINDOW JAMB LINER BEHIND

METALCRAFT BEVELBACK WEATHERBOARD CLADDING

PRE-FINISHED TEK SCREW WITH RUBBER WASHER OR SHANK NAIL

MIN. 15mm GAP  
DRIPE EDGE TO CLADDING  
MIN. 10mm COVER  
DIMENSION TO SUIT  
SUGGEST MIN. 50mm  
MIN. 50MM COVER  
MIN. 75mm WITHOUT HEM EDGE

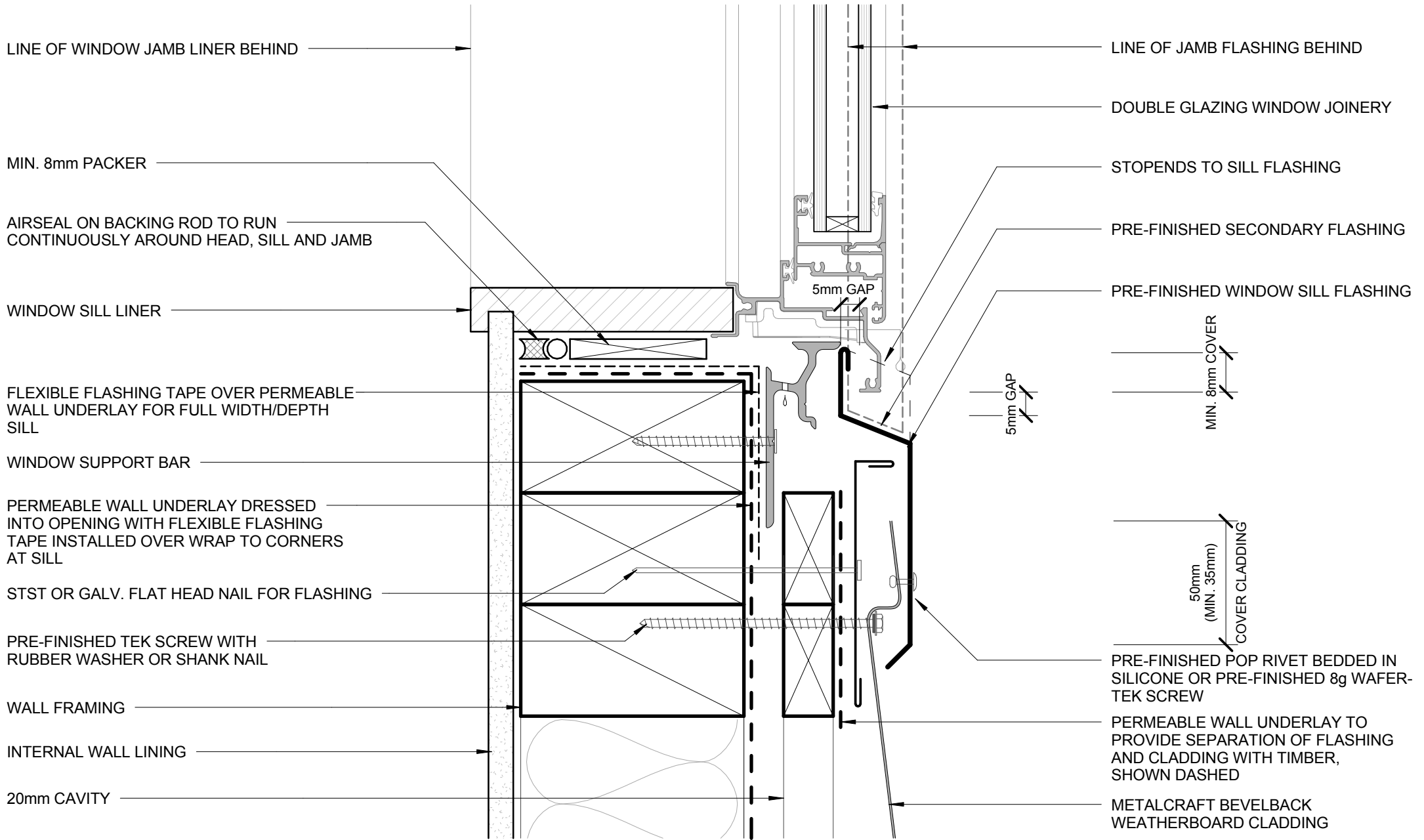
5 mm GAP

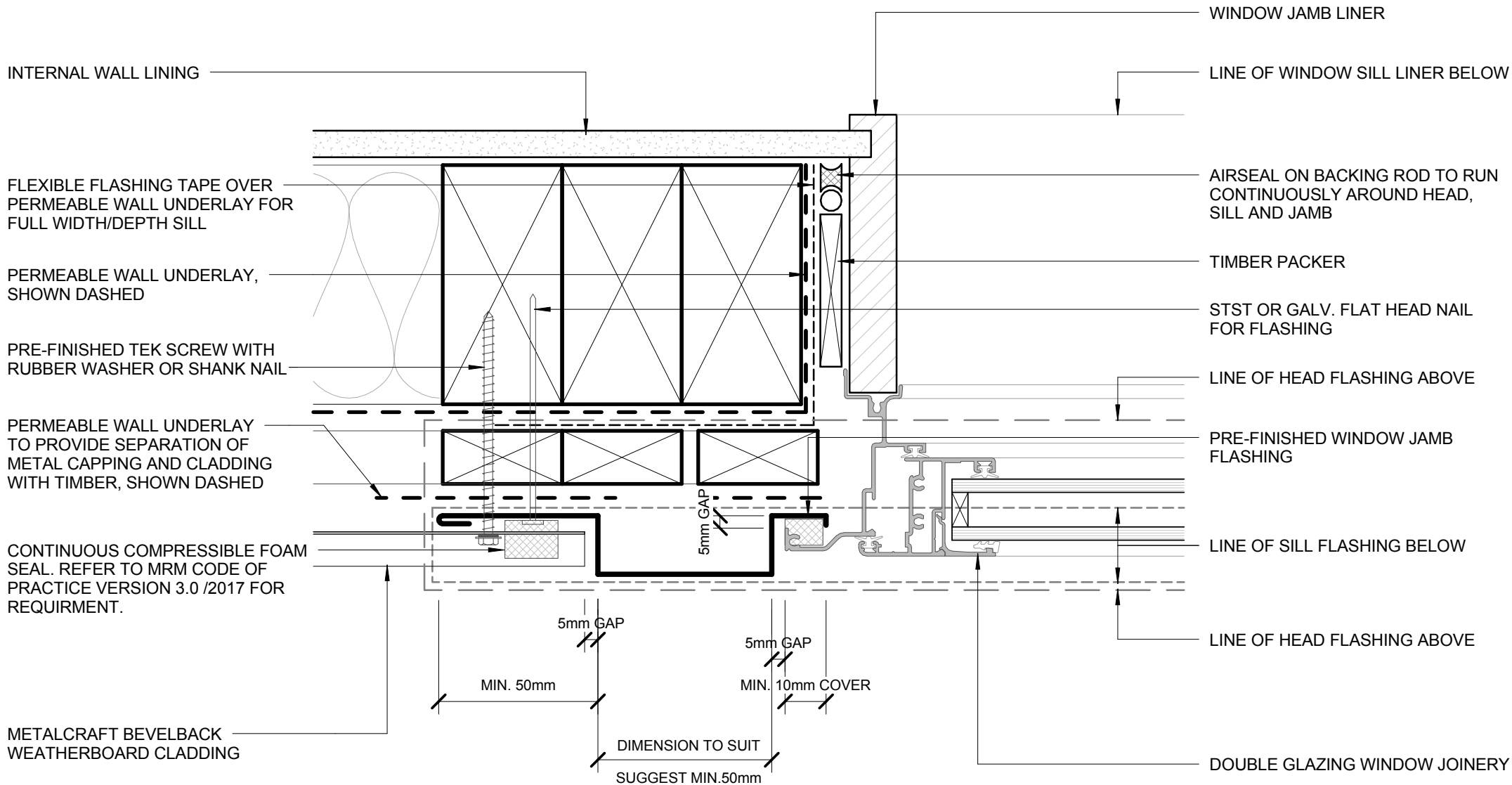
PRE-FINISHED WINDOW HEAD FLASHING WITH 15° FALL

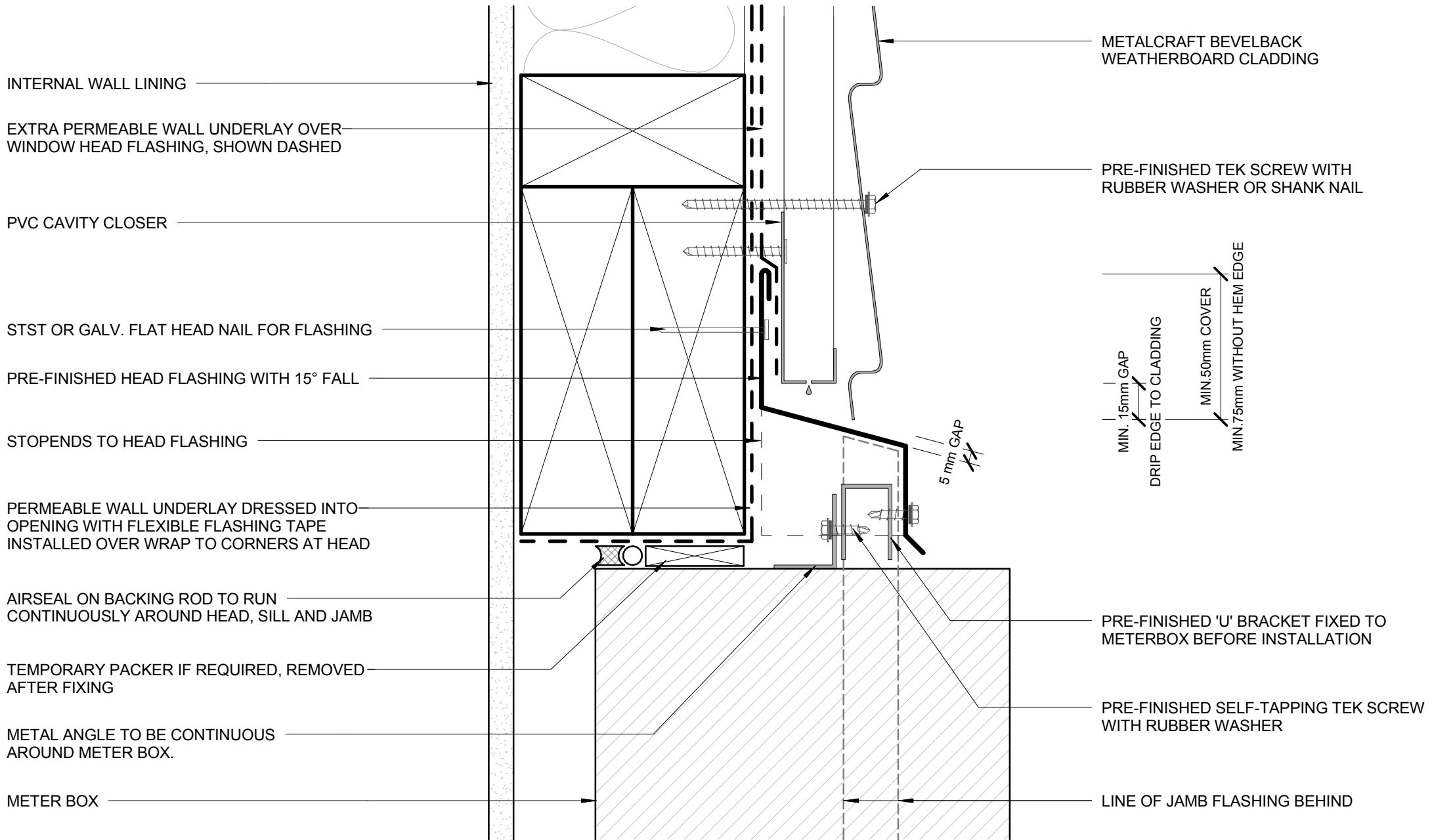
DOUBLE GLAZING WINDOW JOINERY

WINDOW HEAD LINER

LINE OF JAMB FLASHING BEHIND

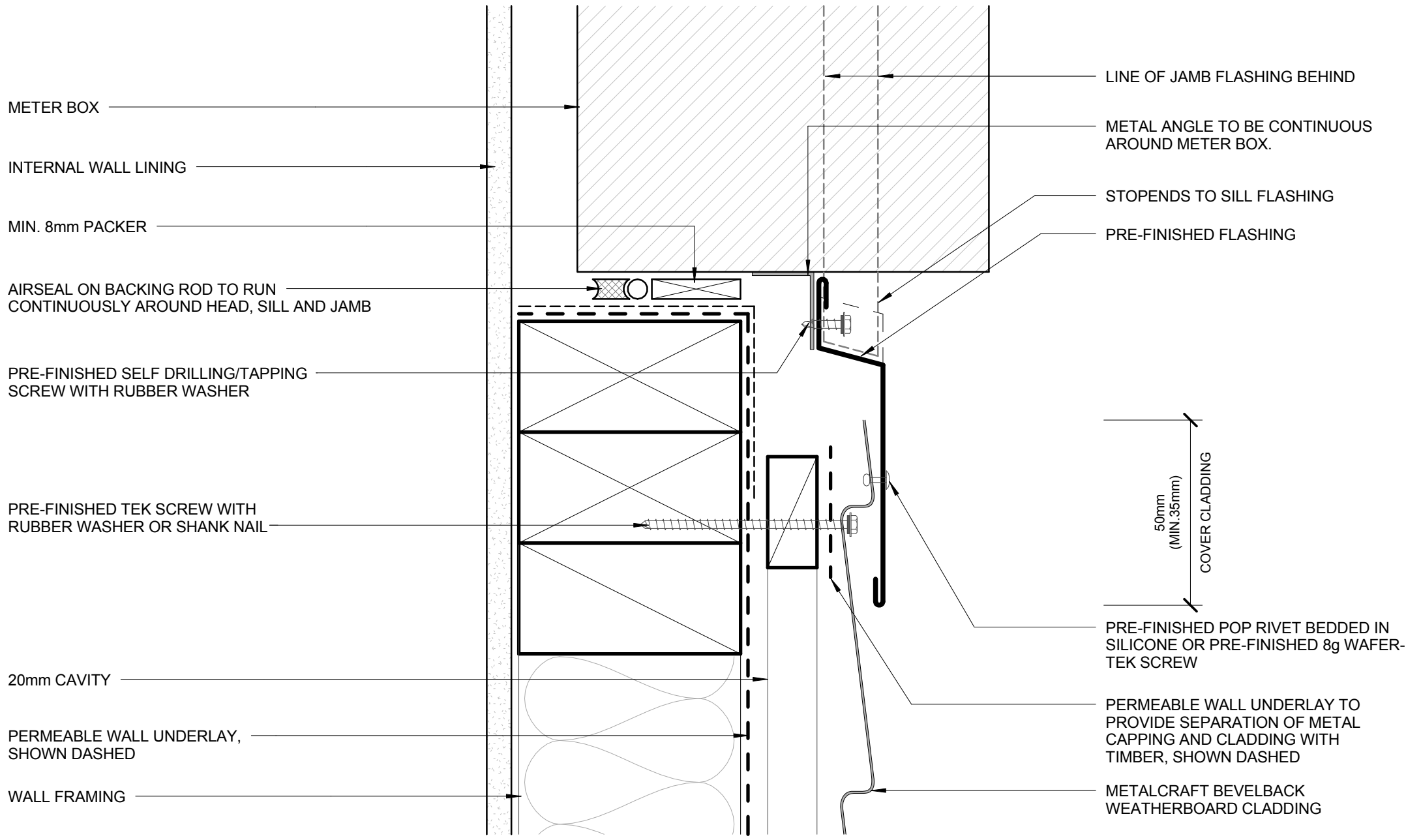






## METERBOX HEAD

RESIDENTIAL HORIZONTAL CLADDING



METER BOX

INTERNAL WALL LINING

MIN. 8mm PACKER

AIRSEAL ON BACKING ROD TO RUN CONTINUOUSLY AROUND HEAD, SILL AND JAMB

PRE-FINISHED SELF DRILLING/TAPPING SCREW WITH RUBBER WASHER

PRE-FINISHED TEK SCREW WITH RUBBER WASHER OR SHANK NAIL

20mm CAVITY

PERMEABLE WALL UNDERLAY, SHOWN DASHED

WALL FRAMING

LINE OF JAMB FLASHING BEHIND

METAL ANGLE TO BE CONTINUOUS AROUND METER BOX.

STOPENDS TO SILL FLASHING

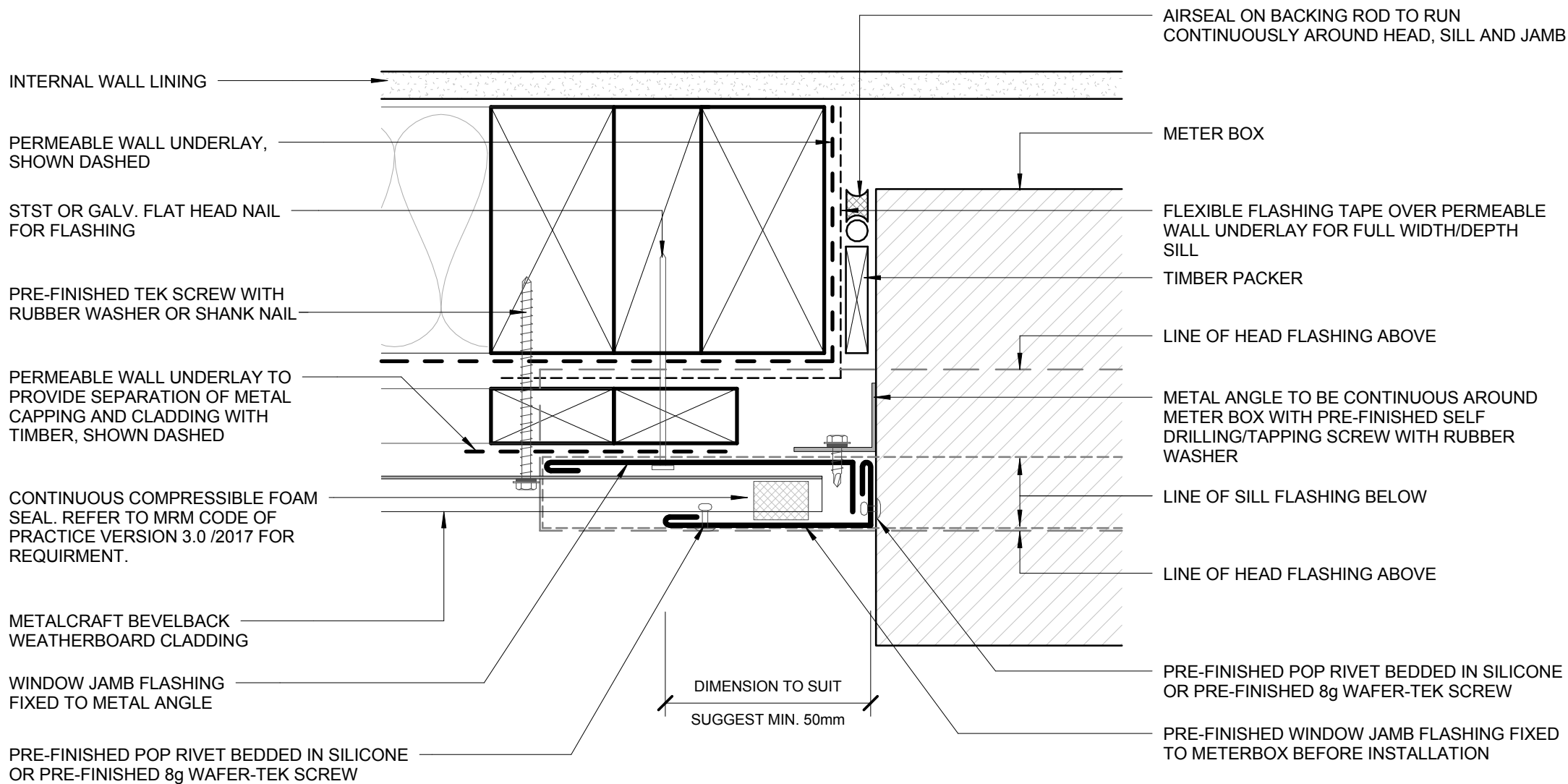
PRE-FINISHED FLASHING

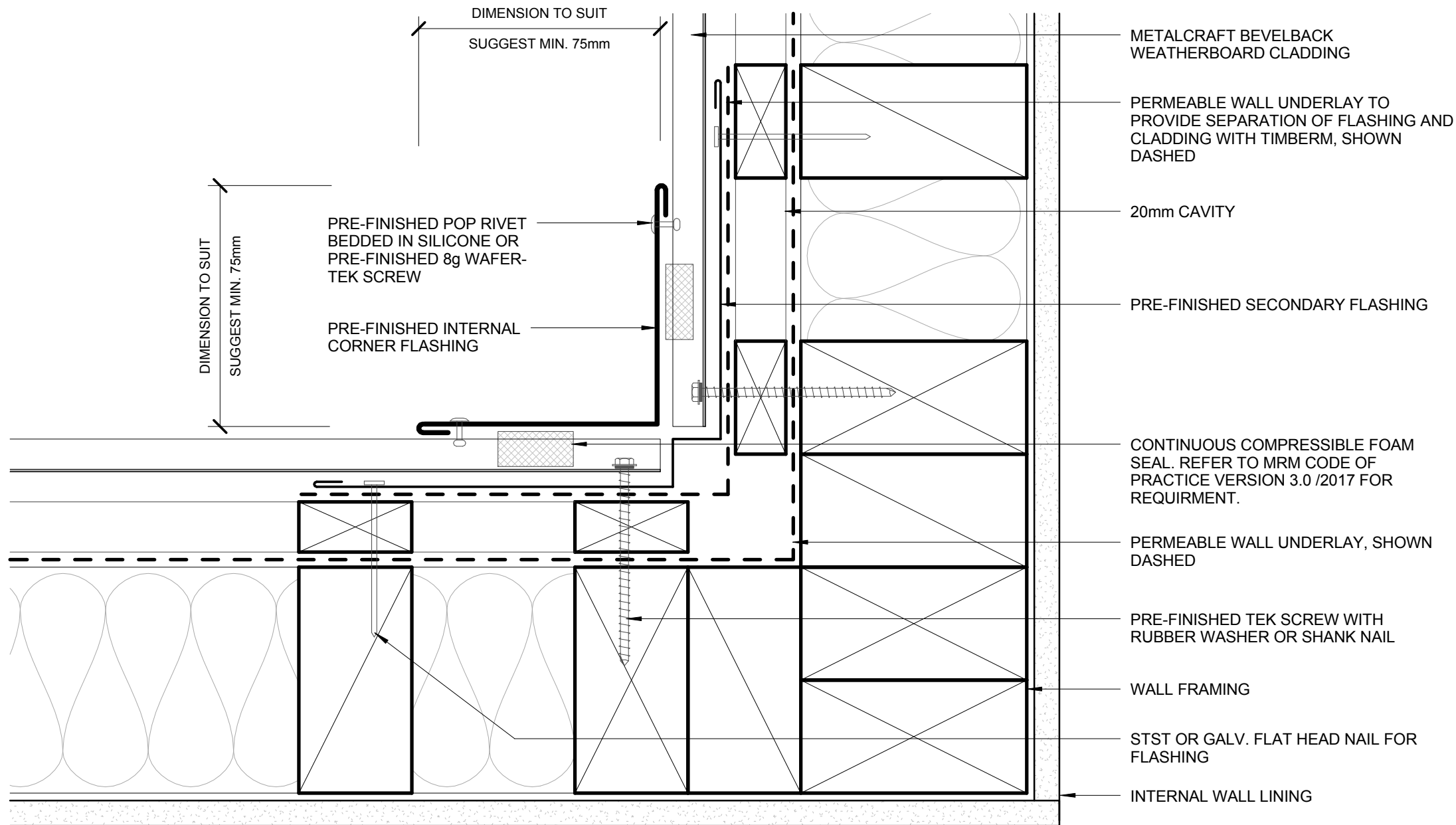
50mm (MIN. 35mm) COVER CLADDING

PRE-FINISHED POP RIVET BEDDED IN SILICONE OR PRE-FINISHED 8g WAFER-TEK SCREW

PERMEABLE WALL UNDERLAY TO PROVIDE SEPARATION OF METAL CAPPING AND CLADDING WITH TIMBER, SHOWN DASHED

METALCRAFT BEVELBACK WEATHERBOARD CLADDING

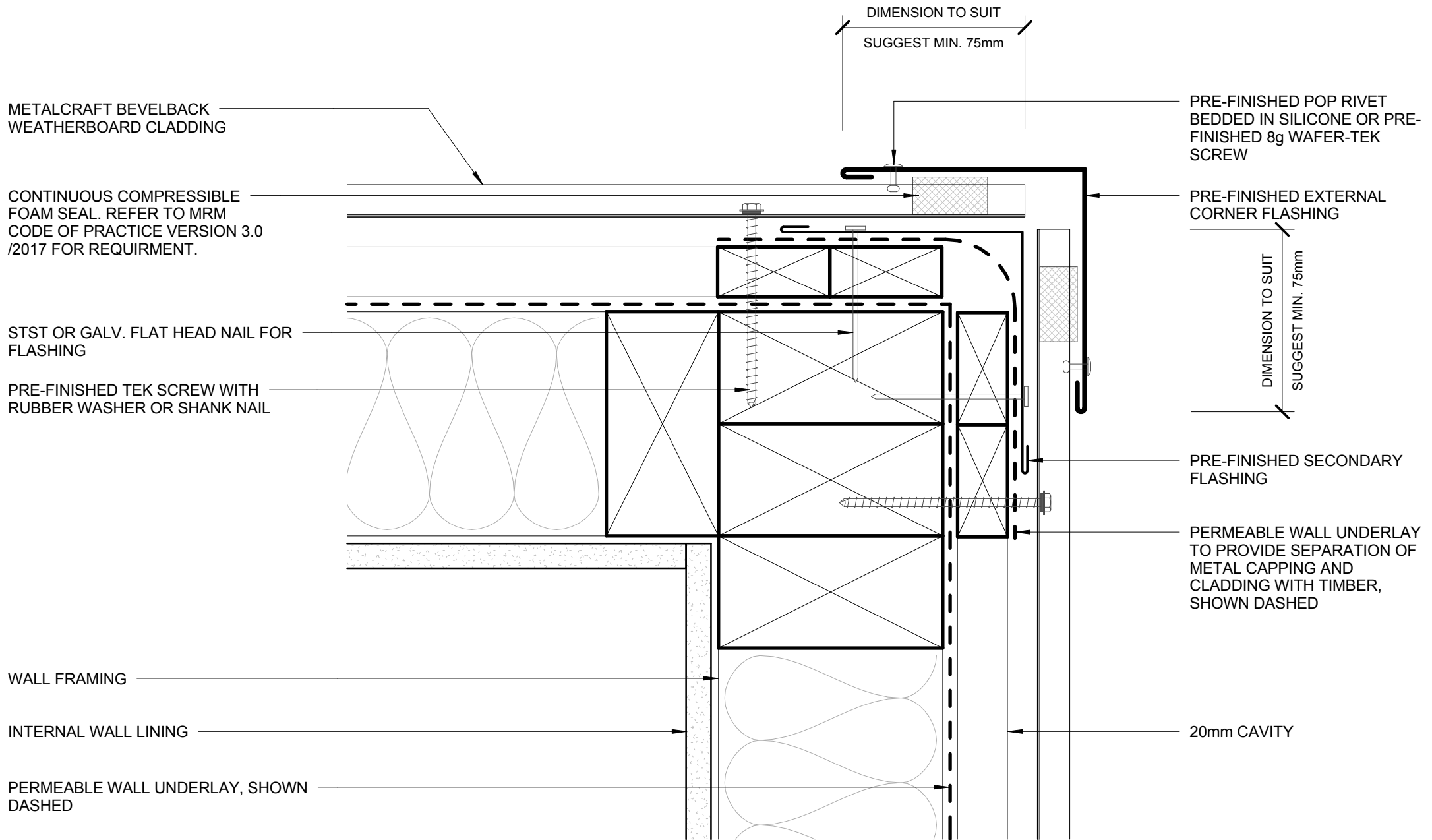




- METALCRAFT BEVELBACK WEATHERBOARD CLADDING
- PERMEABLE WALL UNDERLAY TO PROVIDE SEPARATION OF FLASHING AND CLADDING WITH TIMBER, SHOWN DASHED
- 20mm CAVITY
- PRE-FINISHED SECONDARY FLASHING
- CONTINUOUS COMPRESSIBLE FOAM SEAL. REFER TO MRM CODE OF PRACTICE VERSION 3.0 /2017 FOR REQUIREMENT.
- PERMEABLE WALL UNDERLAY, SHOWN DASHED
- PRE-FINISHED TEK SCREW WITH RUBBER WASHER OR SHANK NAIL
- WALL FRAMING
- STST OR GALV. FLAT HEAD NAIL FOR FLASHING
- INTERNAL WALL LINING

**INTERNAL CORNER**  
**RESIDENTIAL HORIZONTAL CLADDING**





METALCRAFT BEVELBACK WEATHERBOARD CLADDING

CONTINUOUS COMPRESSIBLE FOAM SEAL. REFER TO MRM CODE OF PRACTICE VERSION 3.0 /2017 FOR REQUIRMENT.

STST OR GALV. FLAT HEAD NAIL FOR FLASHING

PRE-FINISHED TEK SCREW WITH RUBBER WASHER OR SHANK NAIL

WALL FRAMING

INTERNAL WALL LINING

PERMEABLE WALL UNDERLAY, SHOWN DASHED

DIMENSION TO SUIT

SUGGEST MIN. 75mm

PRE-FINISHED POP RIVET BEDDED IN SILICONE OR PRE-FINISHED 8g WAFER-TEK SCREW

PRE-FINISHED EXTERNAL CORNER FLASHING

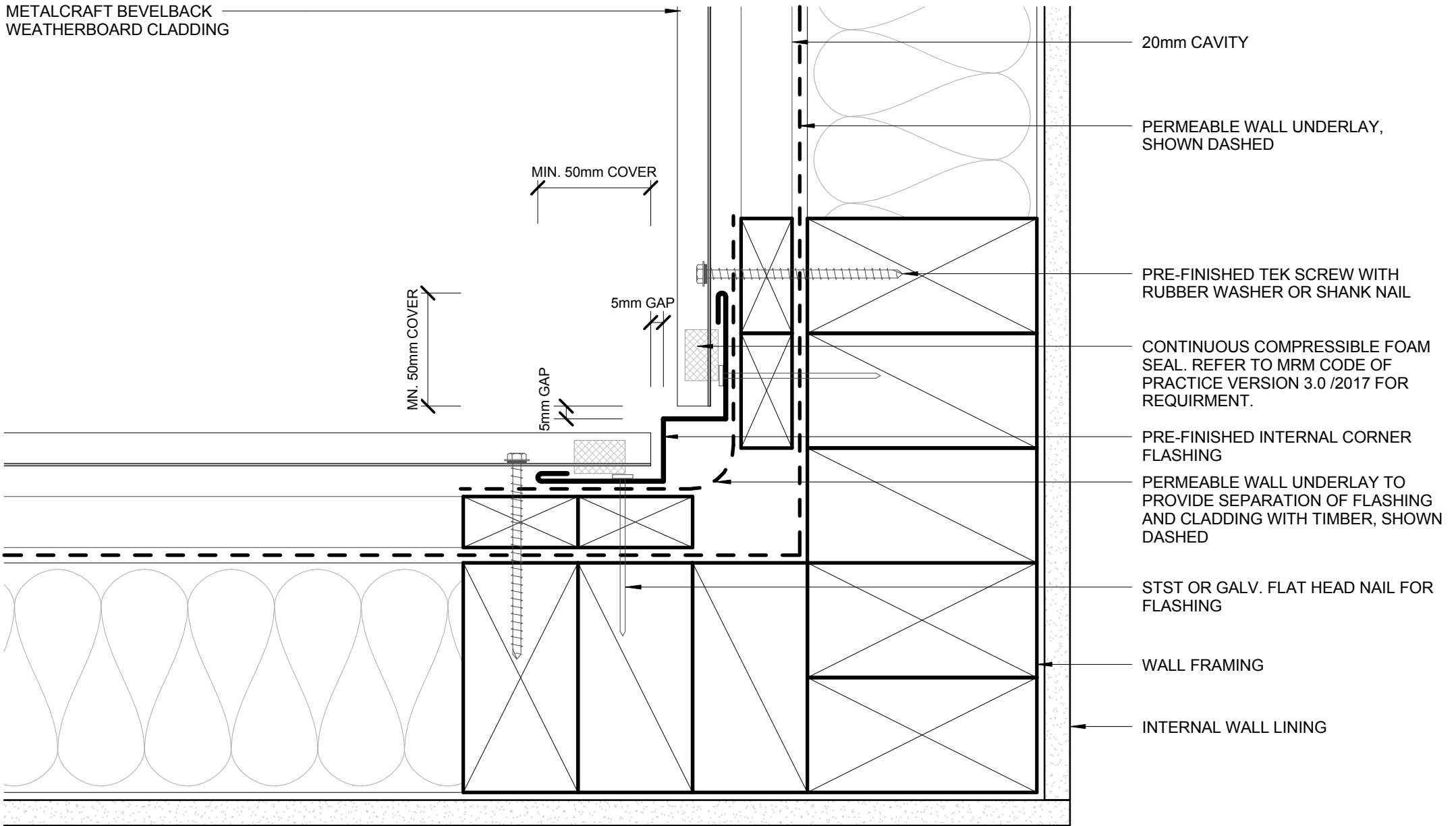
DIMENSION TO SUIT  
SUGGEST MIN. 75mm

PRE-FINISHED SECONDARY FLASHING

PERMEABLE WALL UNDERLAY TO PROVIDE SEPARATION OF METAL CAPPING AND CLADDING WITH TIMBER, SHOWN DASHED

20mm CAVITY

METALCRAFT BEVELBACK  
WEATHERBOARD CLADDING



INTERNAL CORNER BOX TYPE  
RESIDENTIAL HORIZONTAL CLADDING

PRE-FINISHED TEK SCREW WITH RUBBER WASHER OR SHANK NAIL

METALCRAFT BEVELBACK WEATHERBOARD CLADDING

PRE-FINISHED TEK SCREW WITH RUBBER WASHER OR SHANK NAIL

STST OR GALV. FLAT HEAD NAIL FOR FLASHING

PERMEABLE WALL UNDERLAY, SHOWN DASHED

WALL FRAMING

INTERNAL WALL LINING

MIN. 50mm COVER

5mm GAP

MIN. 70mm

PRE-FINISHED EXTERNAL CORNER FLASHING

MIN. 70mm

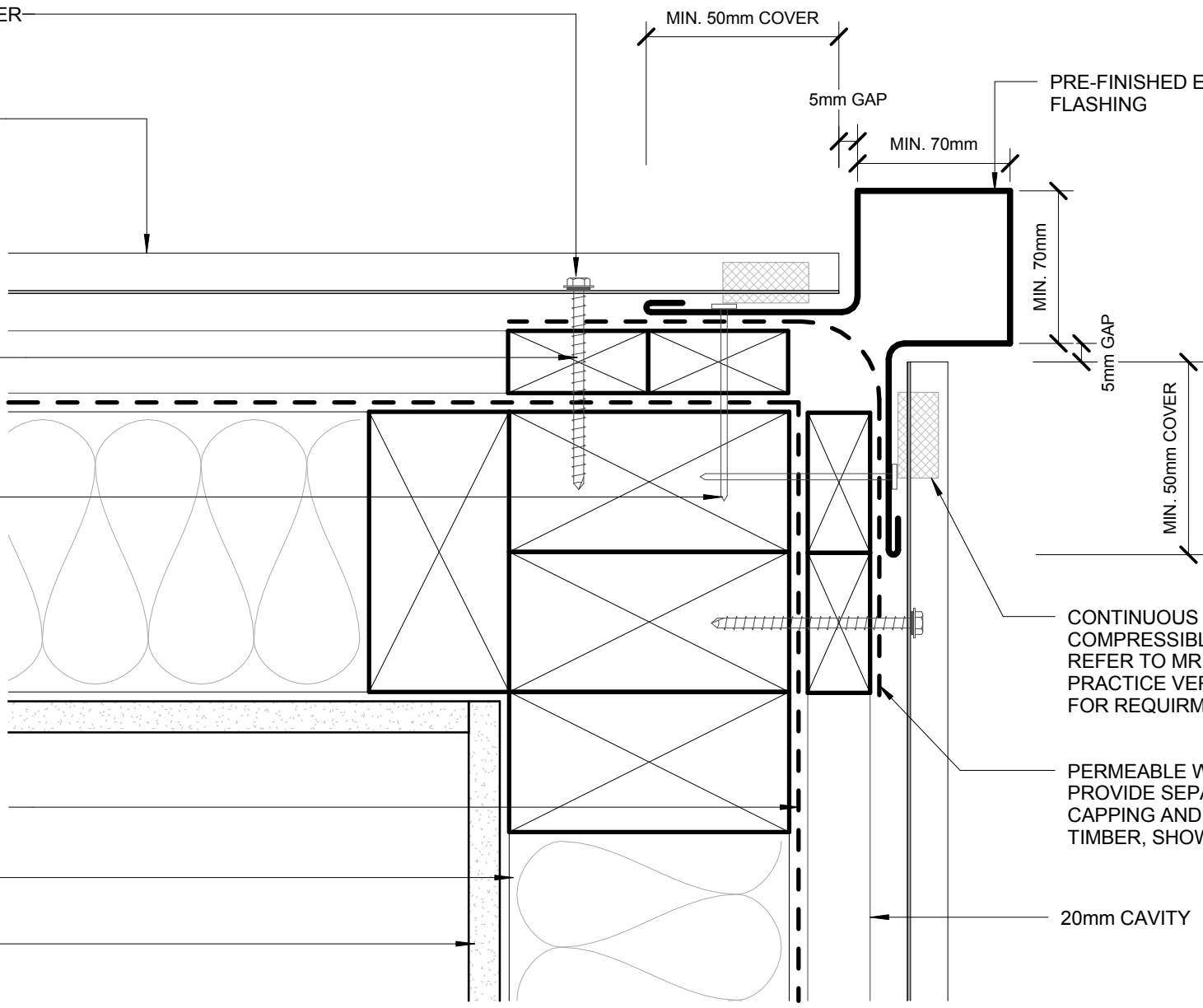
5mm GAP

MIN. 50mm COVER

CONTINUOUS COMPRESSIBLE FOAM SEAL. REFER TO MRM CODE OF PRACTICE VERSION 3.0 /2017 FOR REQUIREMENT.

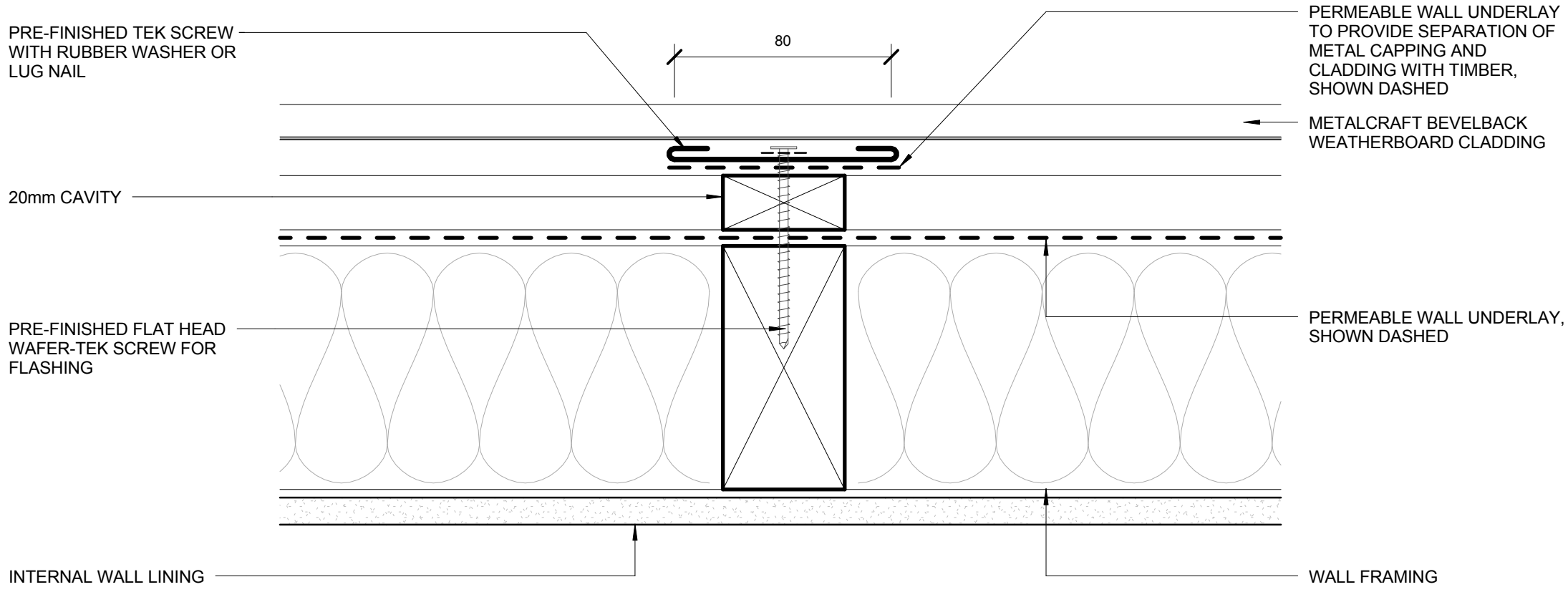
PERMEABLE WALL UNDERLAY TO PROVIDE SEPARATION OF METAL CAPPING AND CLADDING WITH TIMBER, SHOWN DASHED

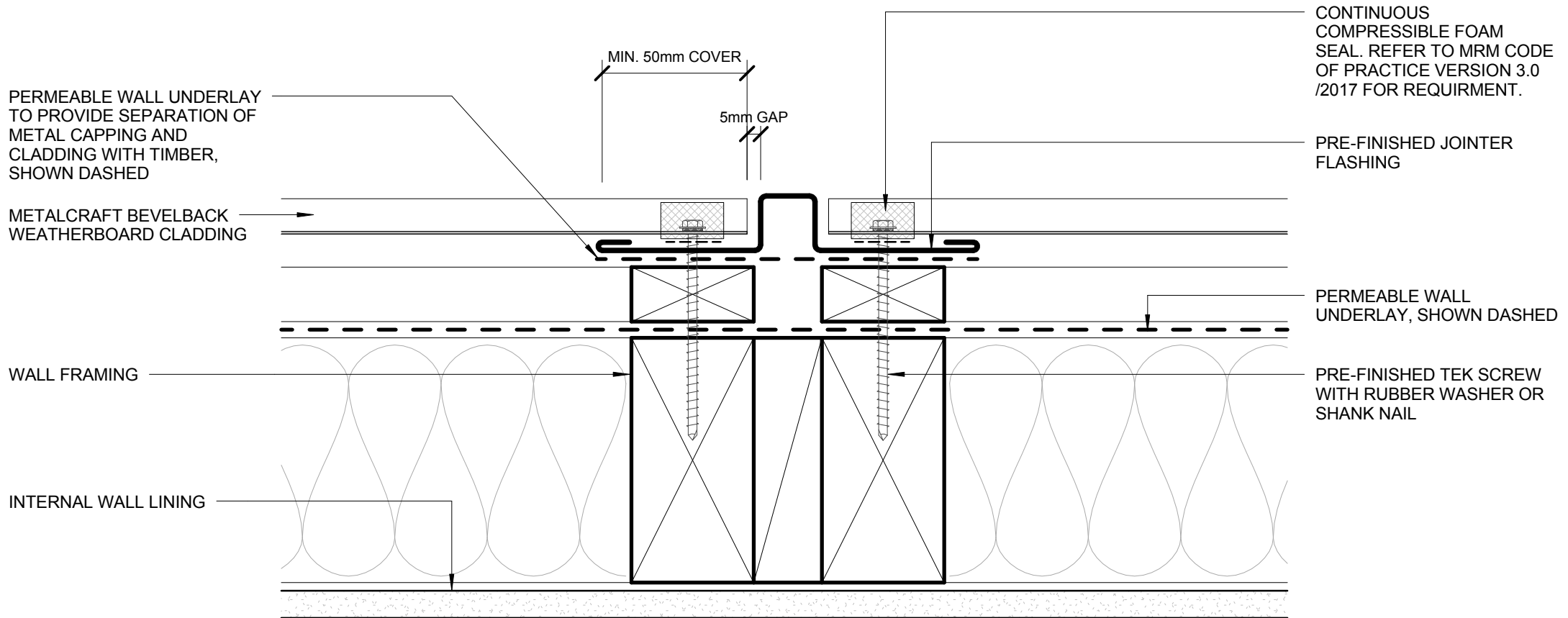
20mm CAVITY

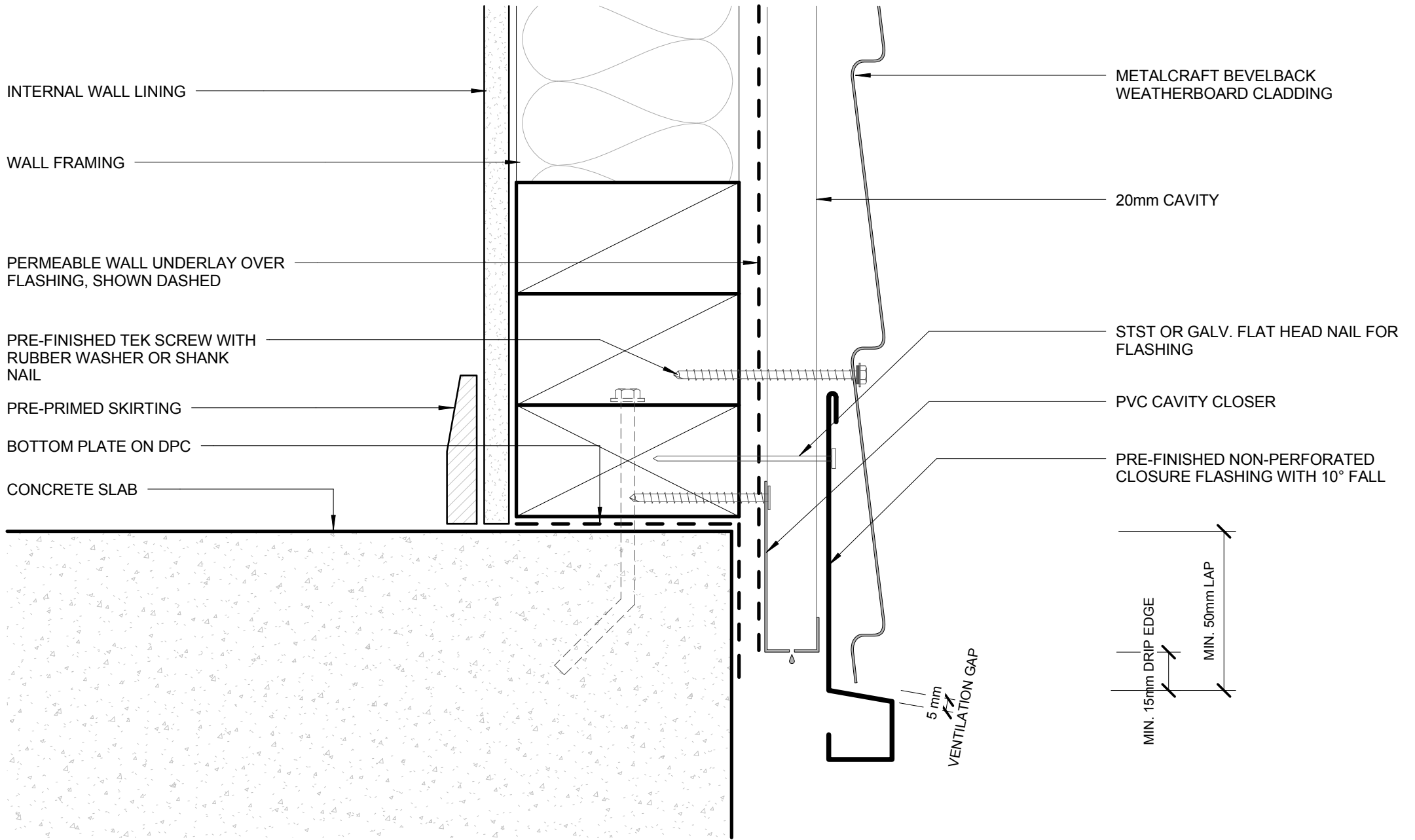


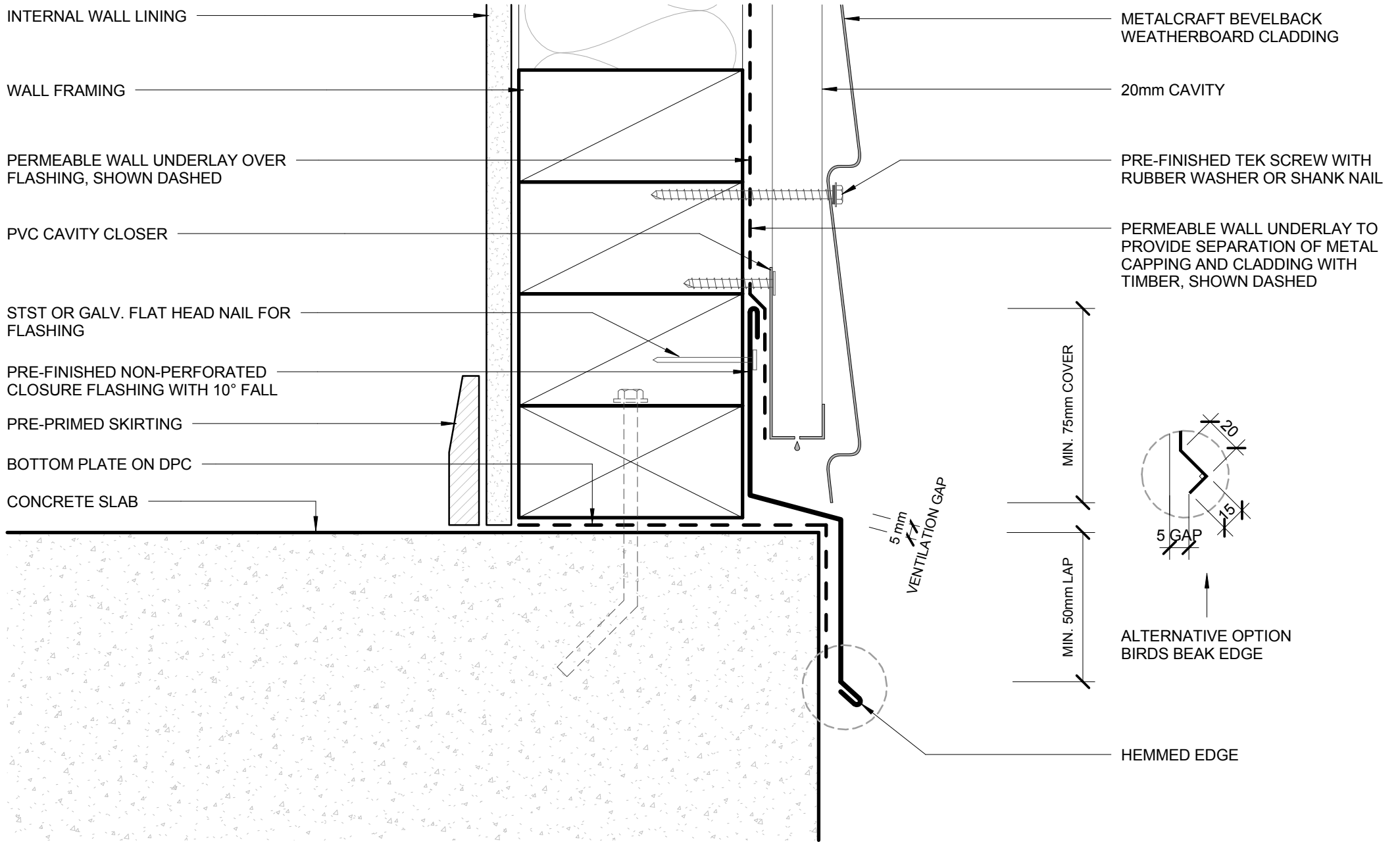
### EXTERNAL CORNER BOX TYPE RESIDENTIAL HORIZONTAL CLADDING

SOAKER FLASHING ONLY REQUIRED TO LINE UP WITH WINDOW JAMB ABOVE.  
REFER TO MRM CODE OF PRACTICE VERSION 3.0 /2017 FOR REQUIRMENT.



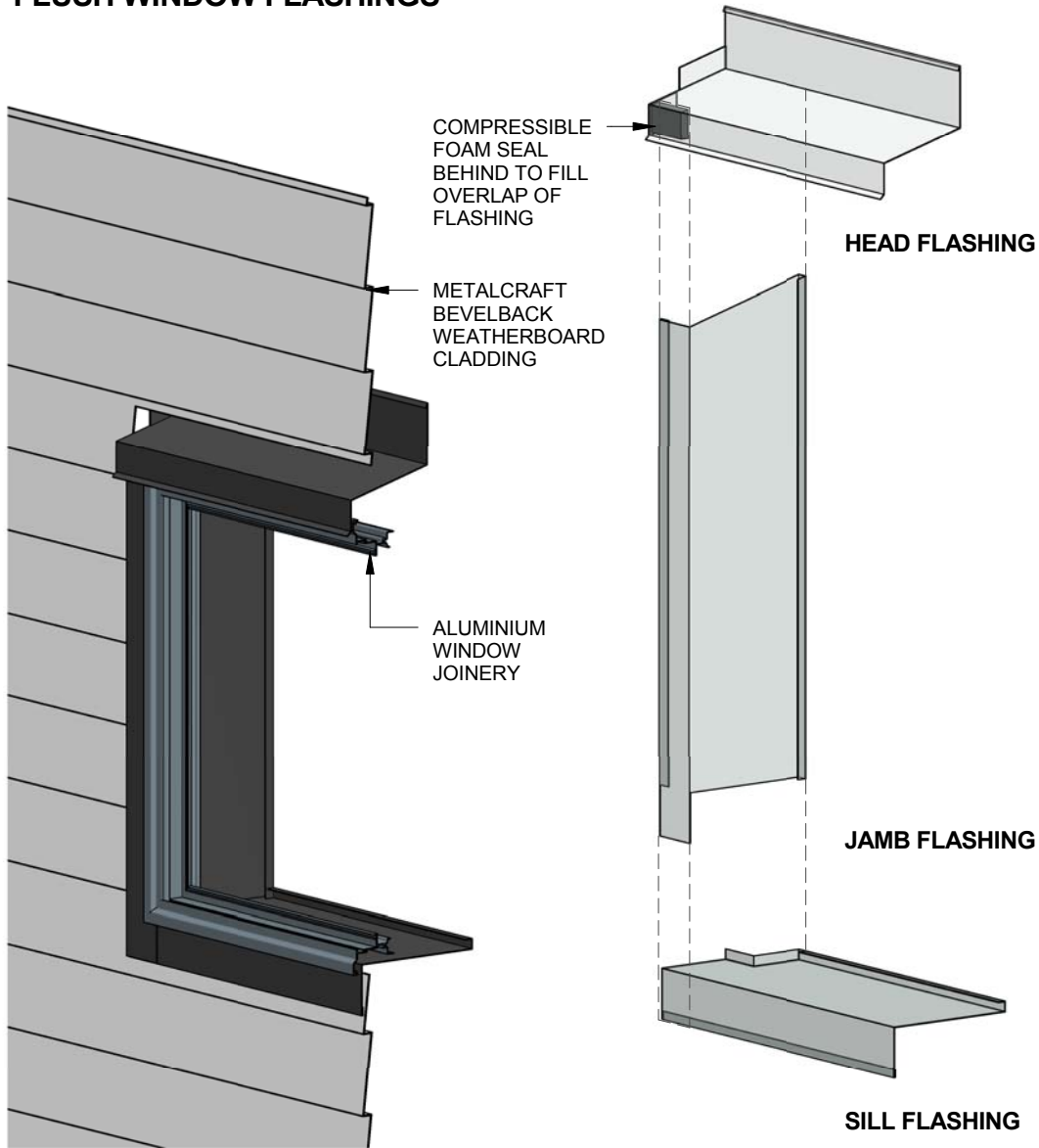






**BOTTOM OF CLADDING (RECESSED)**  
**RESIDENTIAL HORIZONTAL CLADDING**

## FLUSH WINDOW FLASHINGS



## RECESSED WINDOW FLASHINGS

