



MASONS
Designed Smart, Built Tough.

Masons Fibre Cement Sheet

Base Cladding Detail - Direct Fix
Non-habitable

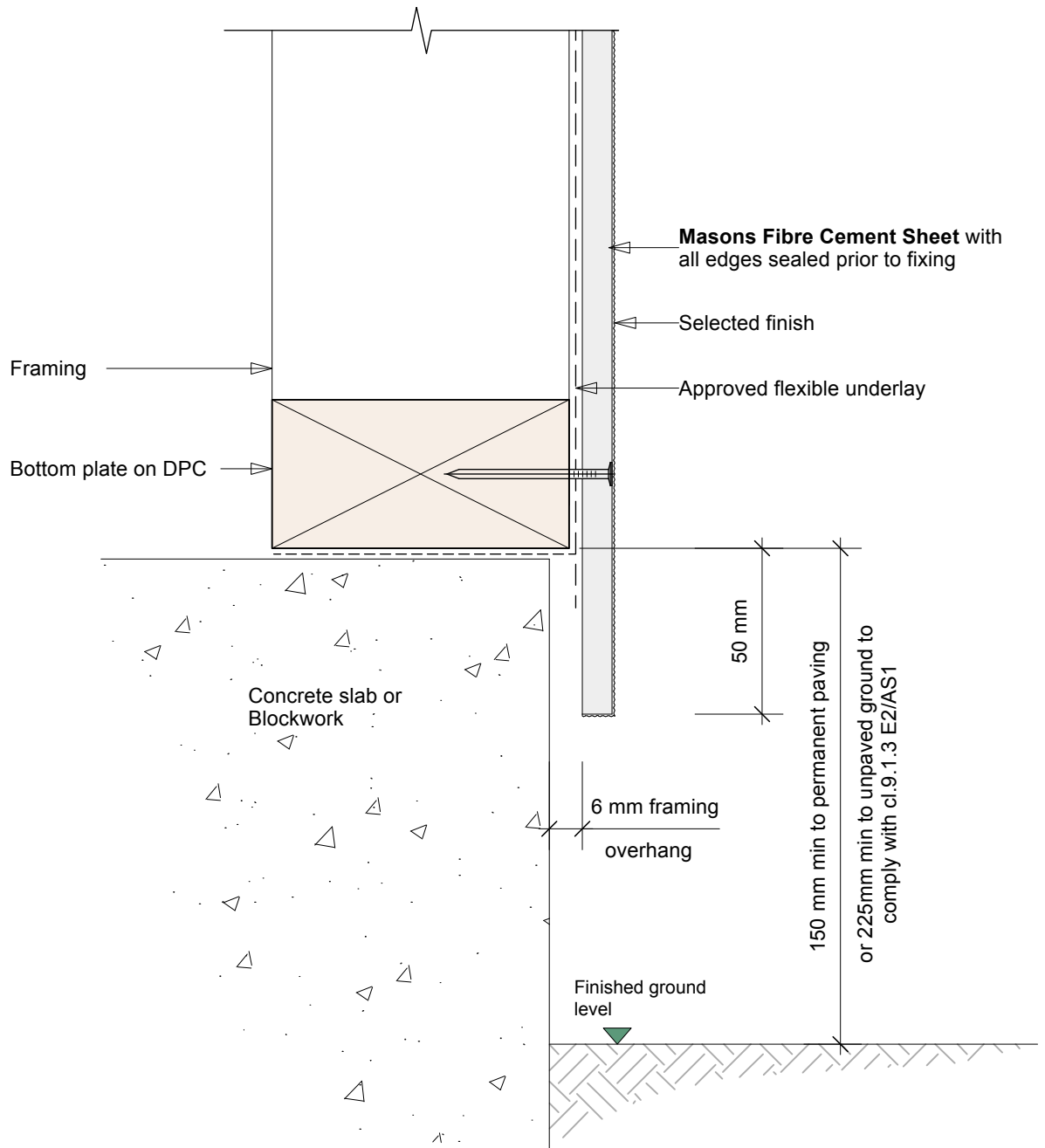
Scale:

1:2

Date:

10/02/25

Drawing No.

MPB - FC-01

Notes:

When 50 year durability is required please refer to Table 20 of the NZBC

Approved Masons flexible underlays: Uni Plus, Unit Pro, Barricade FR or similar



MASONS
Designed Smart, Built Tough.

Masons Fibre Cement Sheet

Scale:

1:2

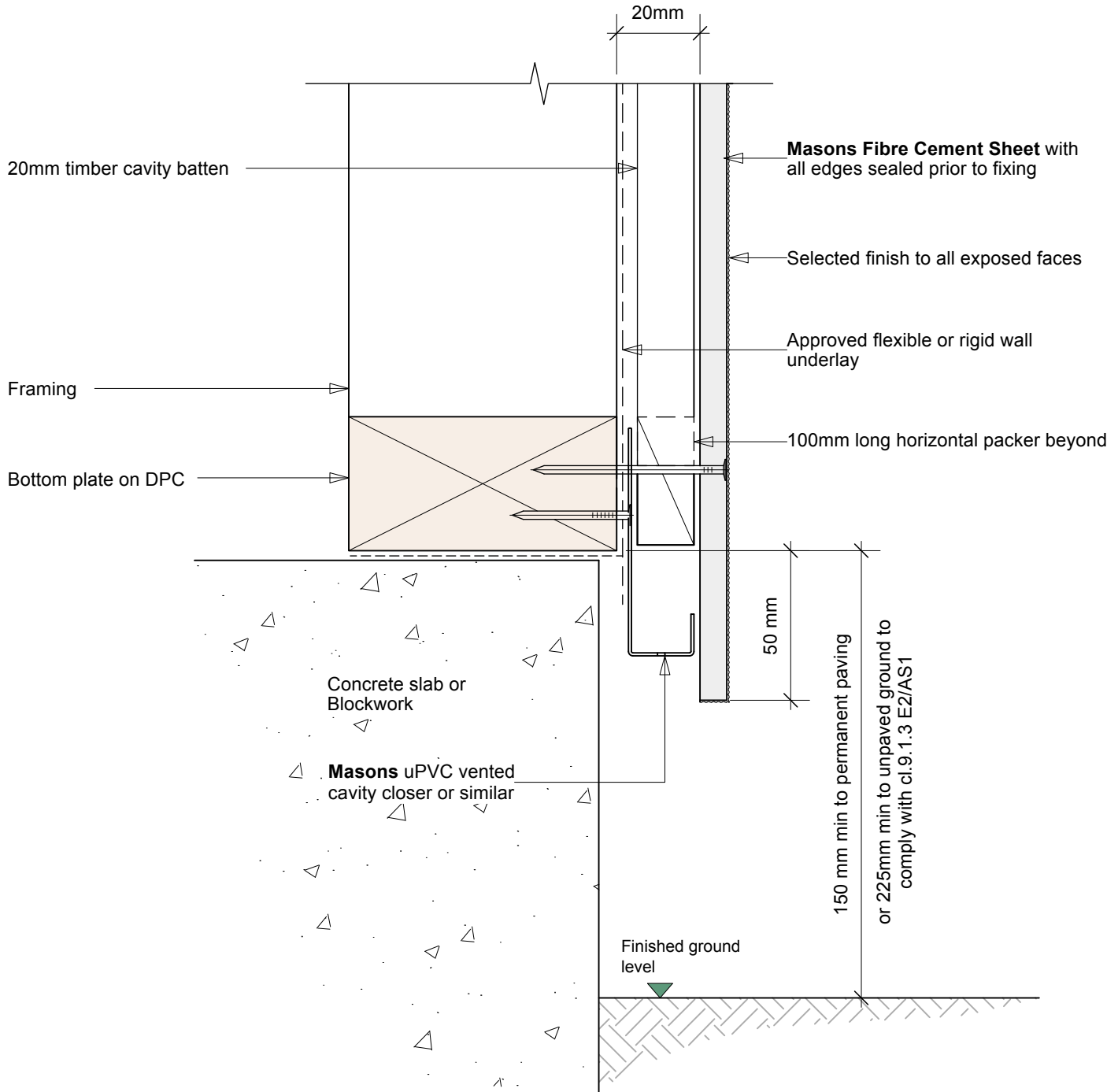
Date:

10/02/25

Drawing No.

MPB - FC-02

Base Cladding Detail - Cavity Fix



Notes:

When 50 year durability is required please refer to Table 20 of the NZBC

Approved Masons underlays: Uni Plus, Unit Pro, Barricade FR, Barricade Weather Defense System or similar



MASONS
Designed Smart, Built Tough.

Masons Fibre Cement Sheet

Vertical uPVC Joints

Scale:

1:2

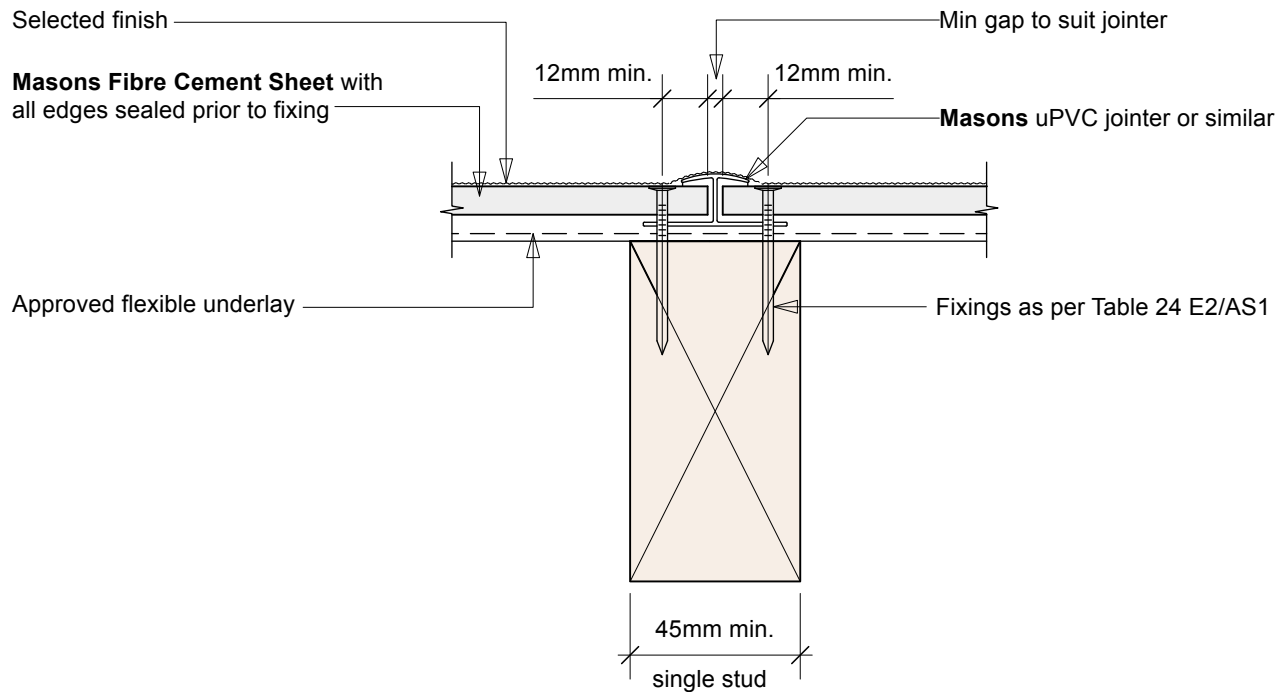
Date:

10/02/25

Drawing No.

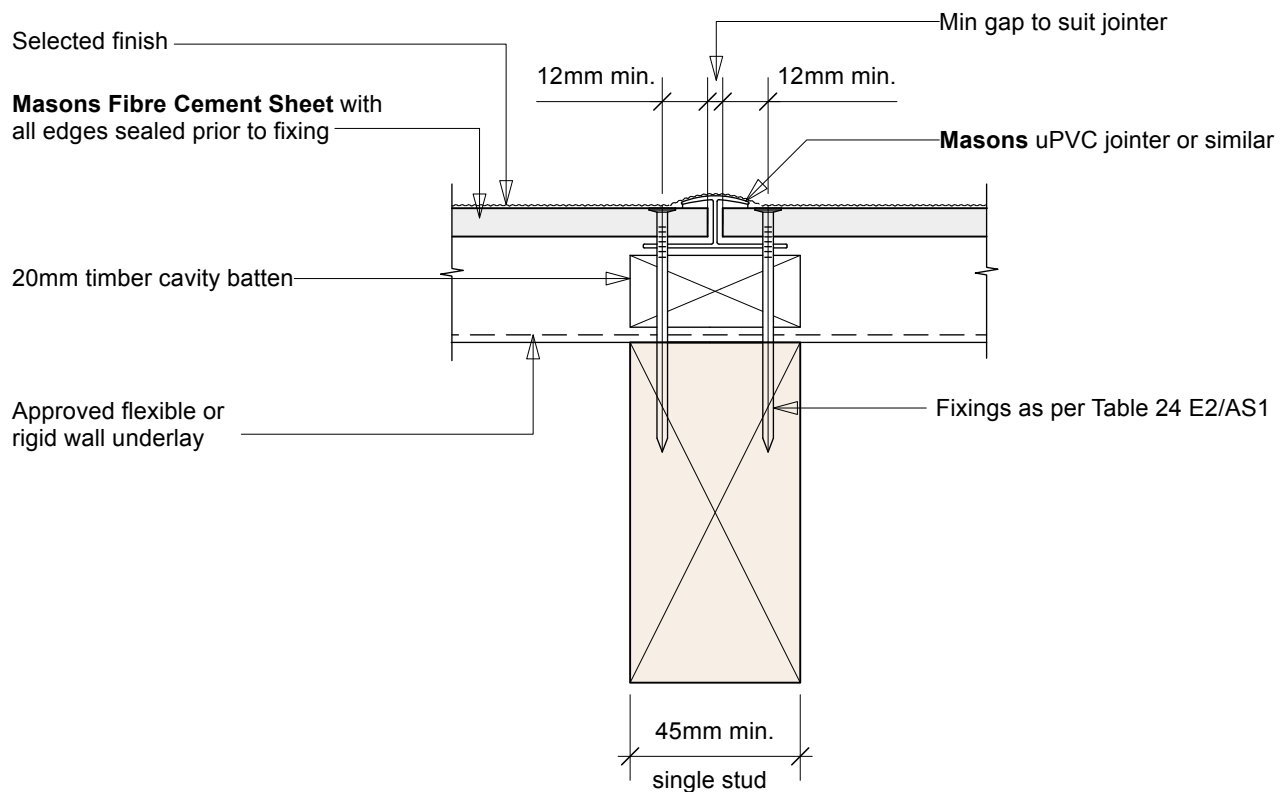
MPB - FC-03

MPB - FC-04



Direct Fix - non habitable

MPB - FC-03



Cavity Fix

MPB - FC-04

Notes:

When 50 year durability is required please refer to Table 20 of the NZBC

Approved Masons underlays: Uni Plus, Unit Pro, Barricade FR, Barricade Weather Defense System or similar



MASONS
Designed Smart, Built Tough.

Masons Fibre Cement Sheet

Scale:

1:2

Date:

10/02/25

Drawing No.

MPB - FC- 05

MPB - FC- 06

Vertical timber Batten Joints

Ex 75mm x 25mm min preprimed H3 treated weathergrooved timber batten

Selected finish

Masons Fibre Cement Sheet with all edges sealed prior to fixing

Approved flexible underlay

12mm min.

12mm min.

2mm gap

Battens to be fixed with 2/65 x 2.8mm jolt head nails at 400 crs.

Fixings as per Table 24 E2/AS1

45mm min.

single stud

Note:

When 50 year durability is required please refer to Table 20 of the NZBC

Direct Fix - non habitable

MPB - FC-05

Ex 75mm x 25mm min preprimed H3 treated weathergrooved timber batten

Selected finish

Masons Fibre Cement Sheet with all edges sealed prior to fixing

Approved flexible or rigid wall underlay

12mm min.

12mm min.

2mm gap

Battens to be fixed with 2/65 x 2.8mm jolt head nails at 400 crs.

Fixings as per Table 24 E2/AS1

45mm min.

single stud

Note:

When 50 year durability is required please refer to Table 20 of the NZBC

Cavity Fix

MPB - FC-06

Notes:

When 50 year durability is required please refer to Table 20 of the NZBC

Approved Masons underlays: Uni Plus, Unit Pro, Barricade FR, Barricade Weather Defense System or similar



MASONS
Designed Smart, Built Tough.

Masons Fibre Cement Sheet

uPVC Int Cnr Joint Direct Fix
- non habitable

Scale:

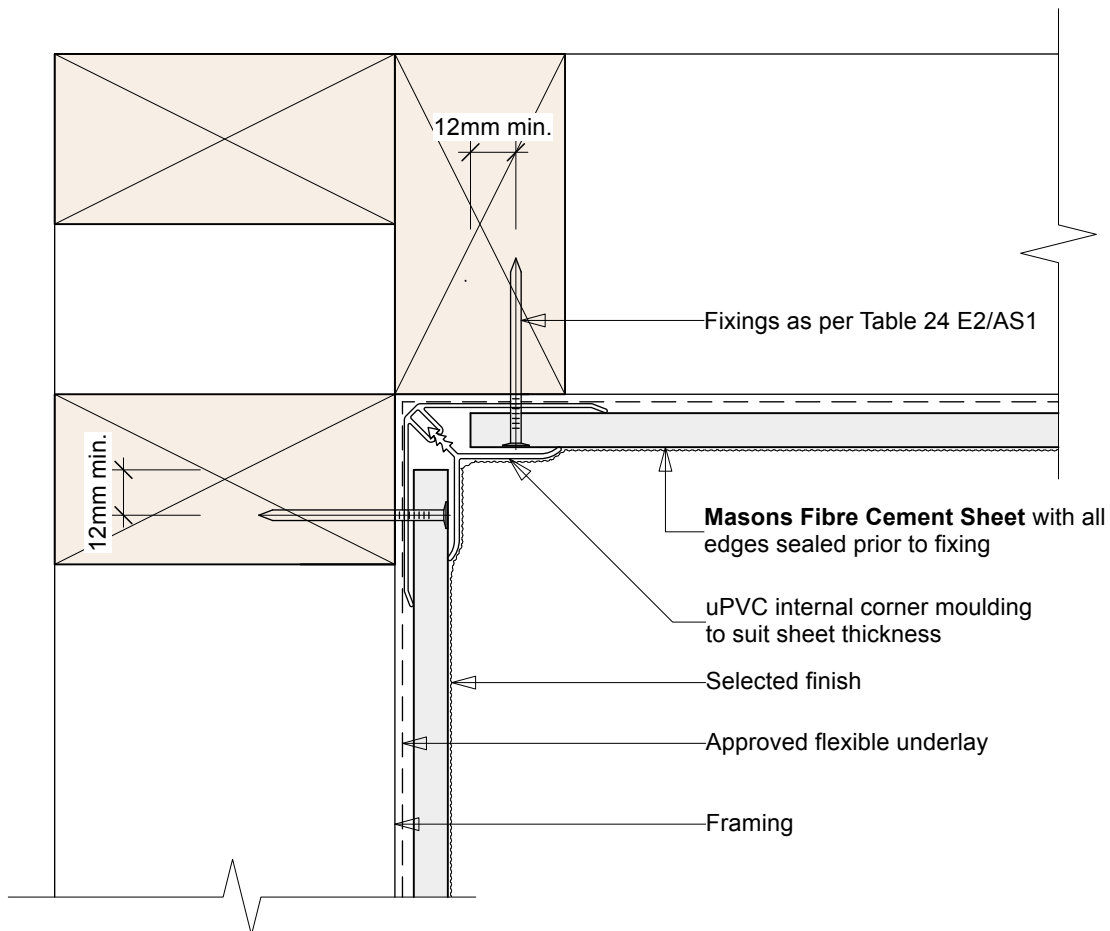
1:2

Date:

10/02/25

Drawing No.

MPB - FC-07



Notes:

When 50 year durability is required please refer to Table 20 of the NZBC

Approved Masons flexible underlays: Uni Plus, Unit Pro, Barricade FR or similar



MASONS
Designed Smart, Built Tough.

Masons Fibre Cement Sheet

uPVC Int Cnr Joint Cavity Fix

Scale:

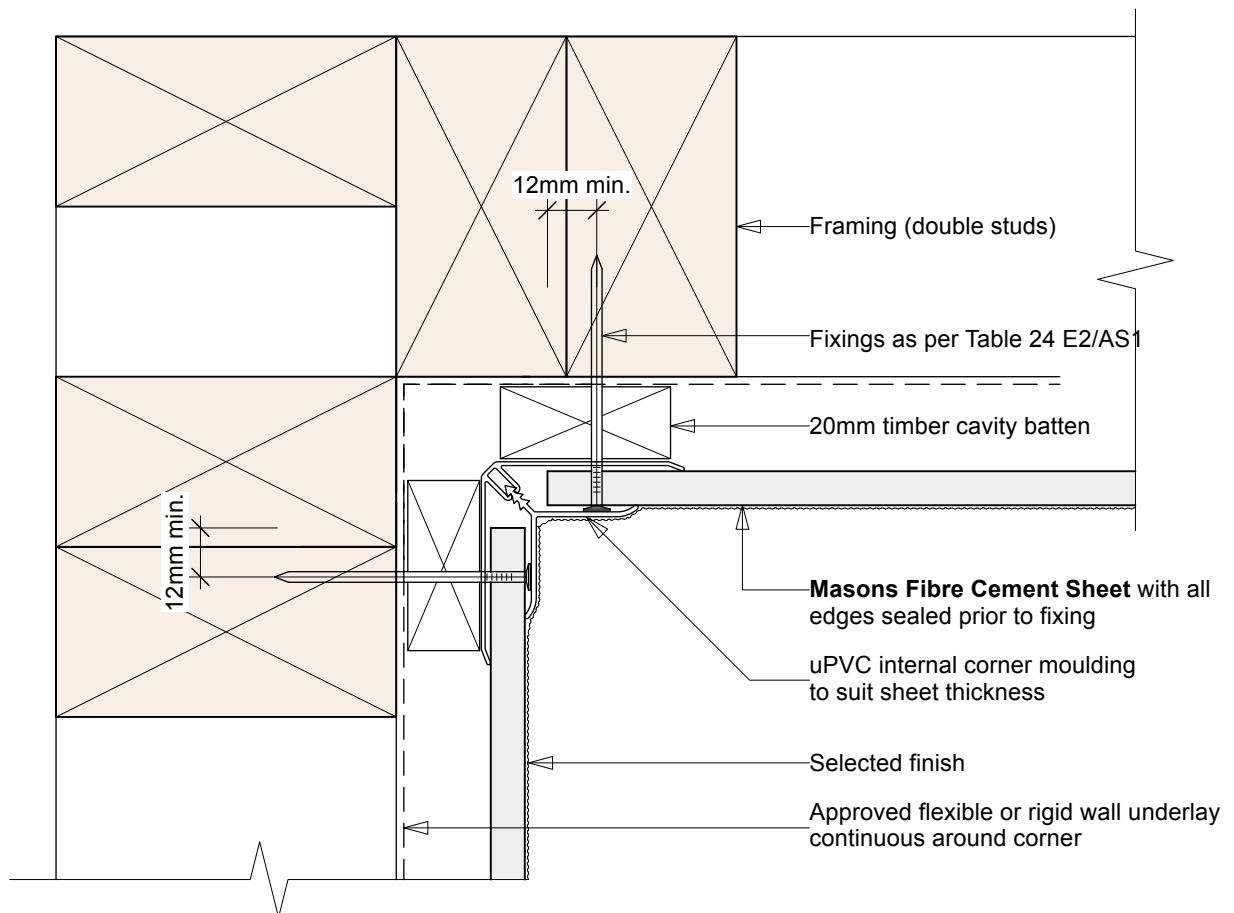
1:2

Date:

10/02/25

Drawing No.

MPB - FC-08



Notes:

When 50 year durability is required please refer to Table 20 of the NZBC

Approved Masons underlays: Uni Plus, Unit Pro, Barricade FR, Barricade Weather Defense System or similar



MASONS
Designed Smart, Built Tough.

Masons Fibre Cement Sheet

Timber Batten Internal Corner
Joint - Direct Fix - non habitable

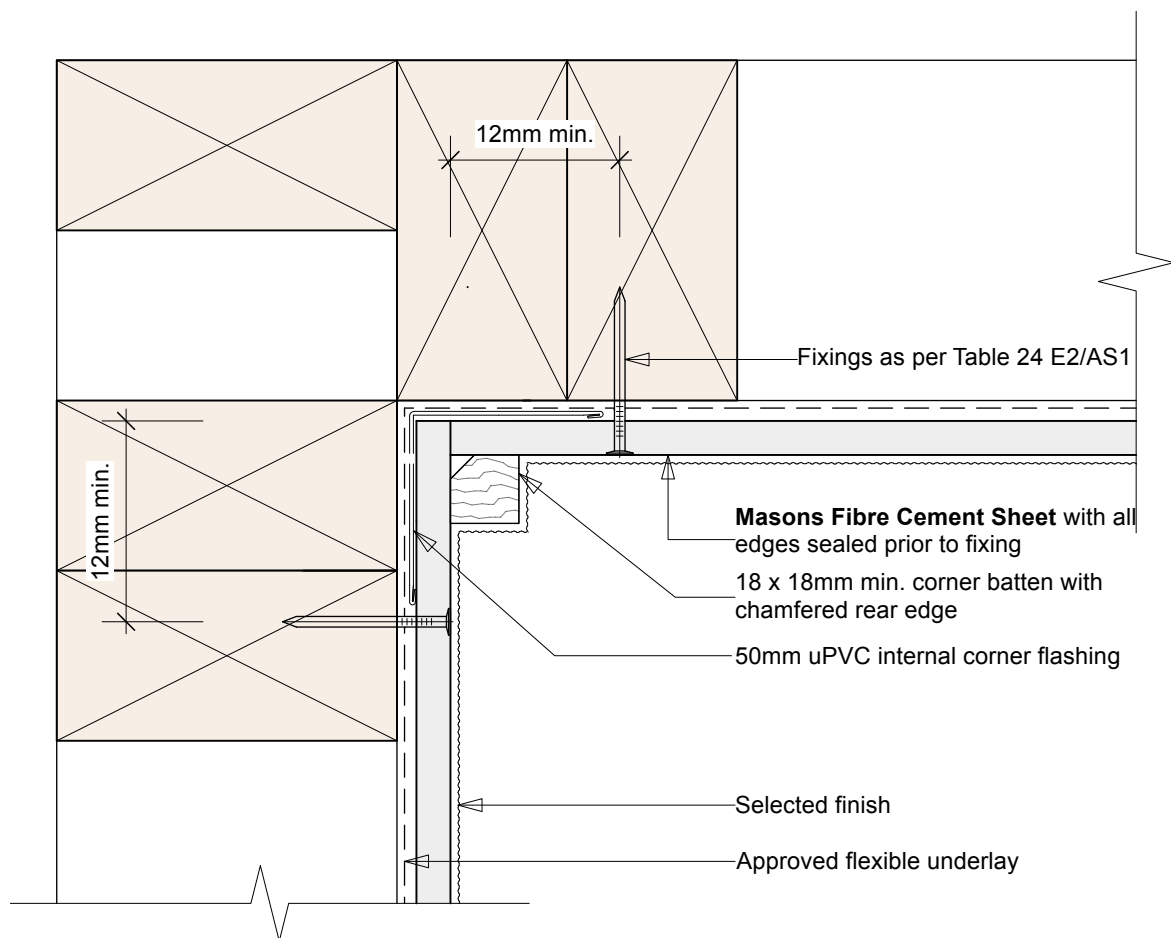
Scale:

1:2

Date:

10/02/25

Drawing No.

MPB - FC-09

Notes:

When 50 year durability is required please refer to Table 20 of the NZBC

Approved Masons flexible underlays: Uni Plus, Unit Pro, Barricade FR or similar



MASONS
Designed Smart, Built Tough.

Masons Fibre Cement Sheet

Scale:

1:2

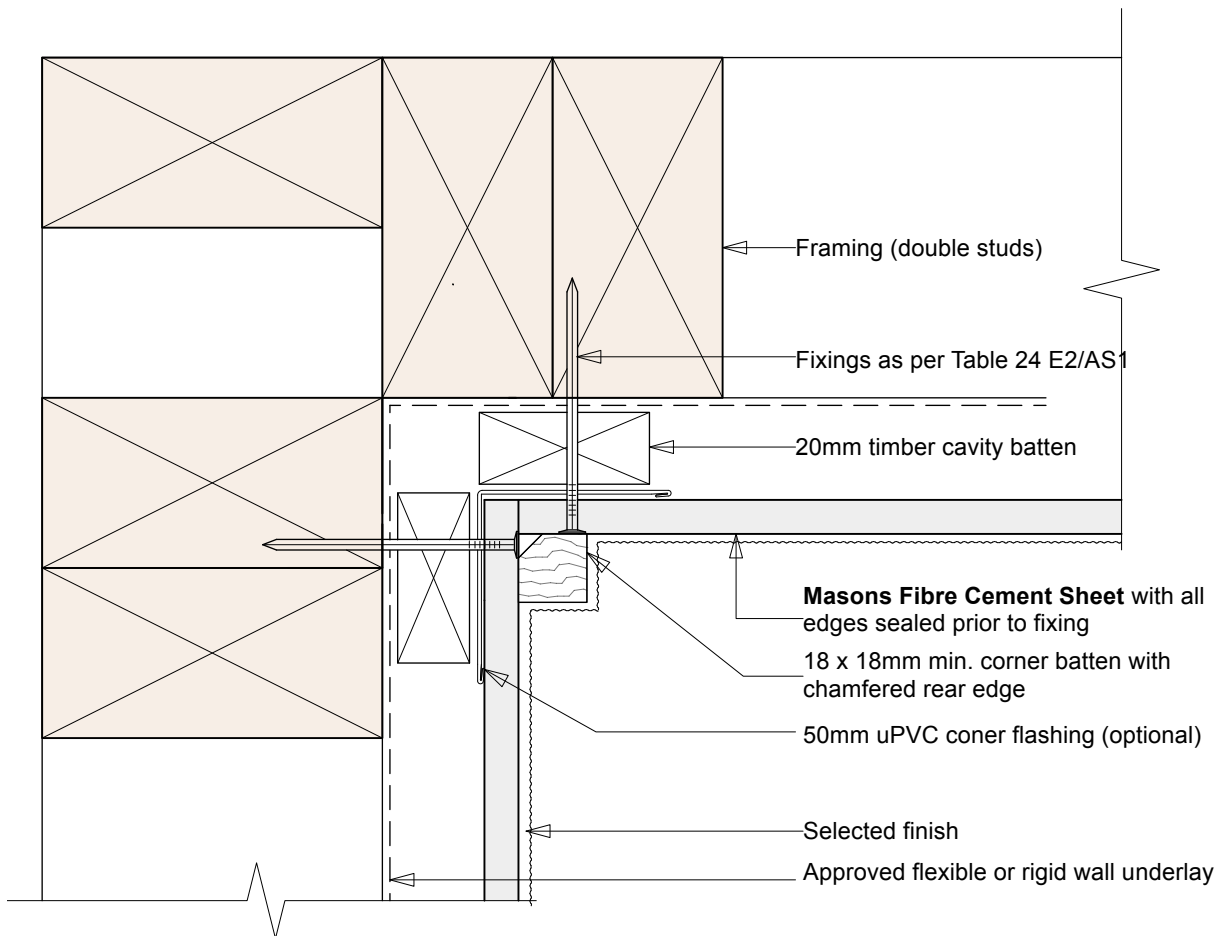
Date:

10/02/25

Drawing No.

Timber Batten Internal Corner - Cavity Fix

MPB - FC-10



Notes:

When 50 year durability is required please refer to Table 20 of the NZBC

Approved Masons underlays: Uni Plus, Unit Pro, Barricade FR, Barricade Weather Defense System or similar



MASONS
Designed Smart, Built Tough.

Masons Fibre Cement Sheet

uPVC External Corner Joint - Direct Fix
non habitable

Scale:

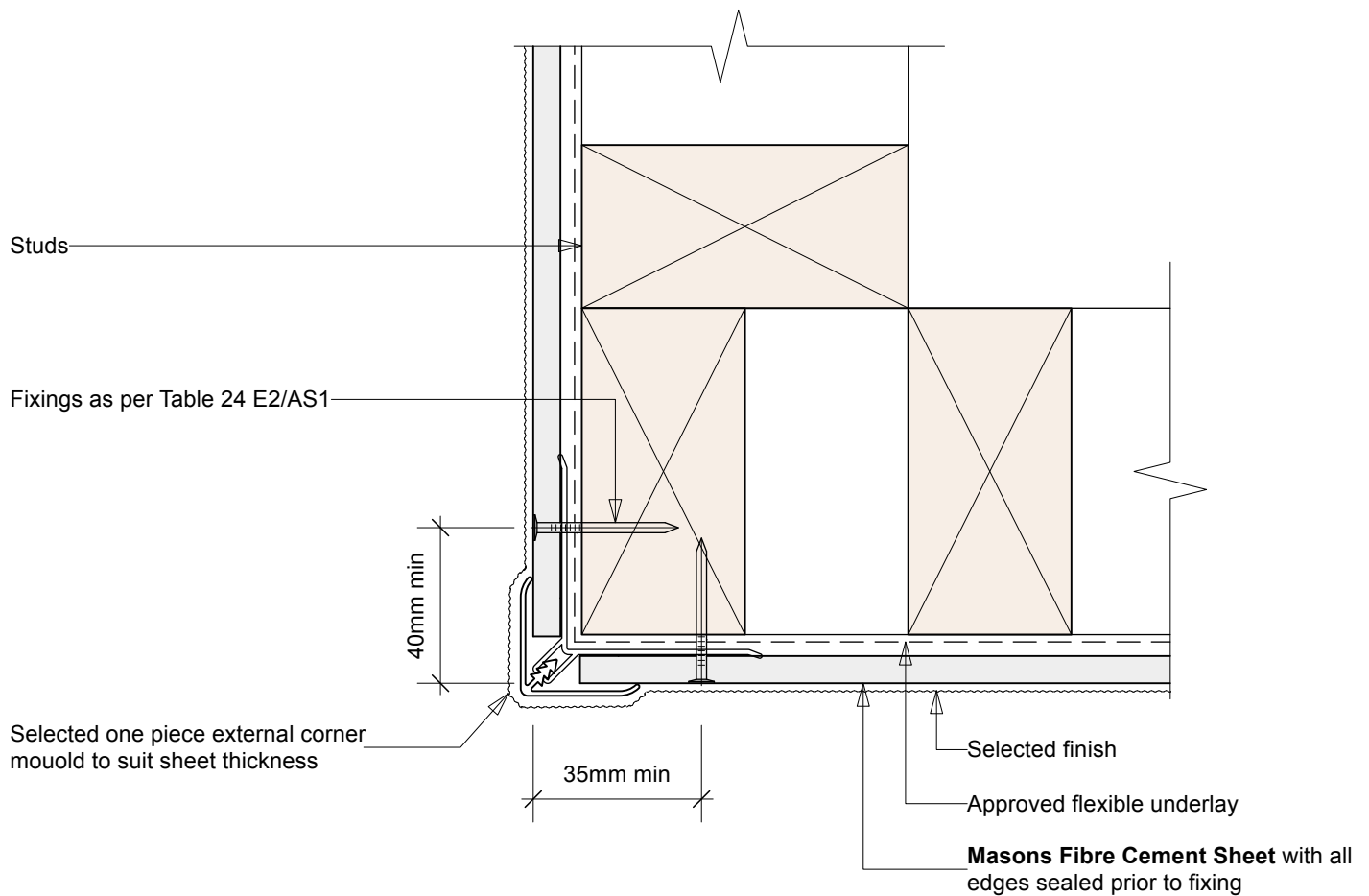
1:2

Date:

10/02/25

Drawing No.

MPB - FC-11



Notes:

When 50 year durability is required please refer to Table 20 of the NZBC

Approved Masons flexible underlays: Uni Plus, Unit Pro, Barricade FR or similar



MASONS
Designed Smart, Built Tough.

Masons Fibre Cement Sheet

Scale:

1:2

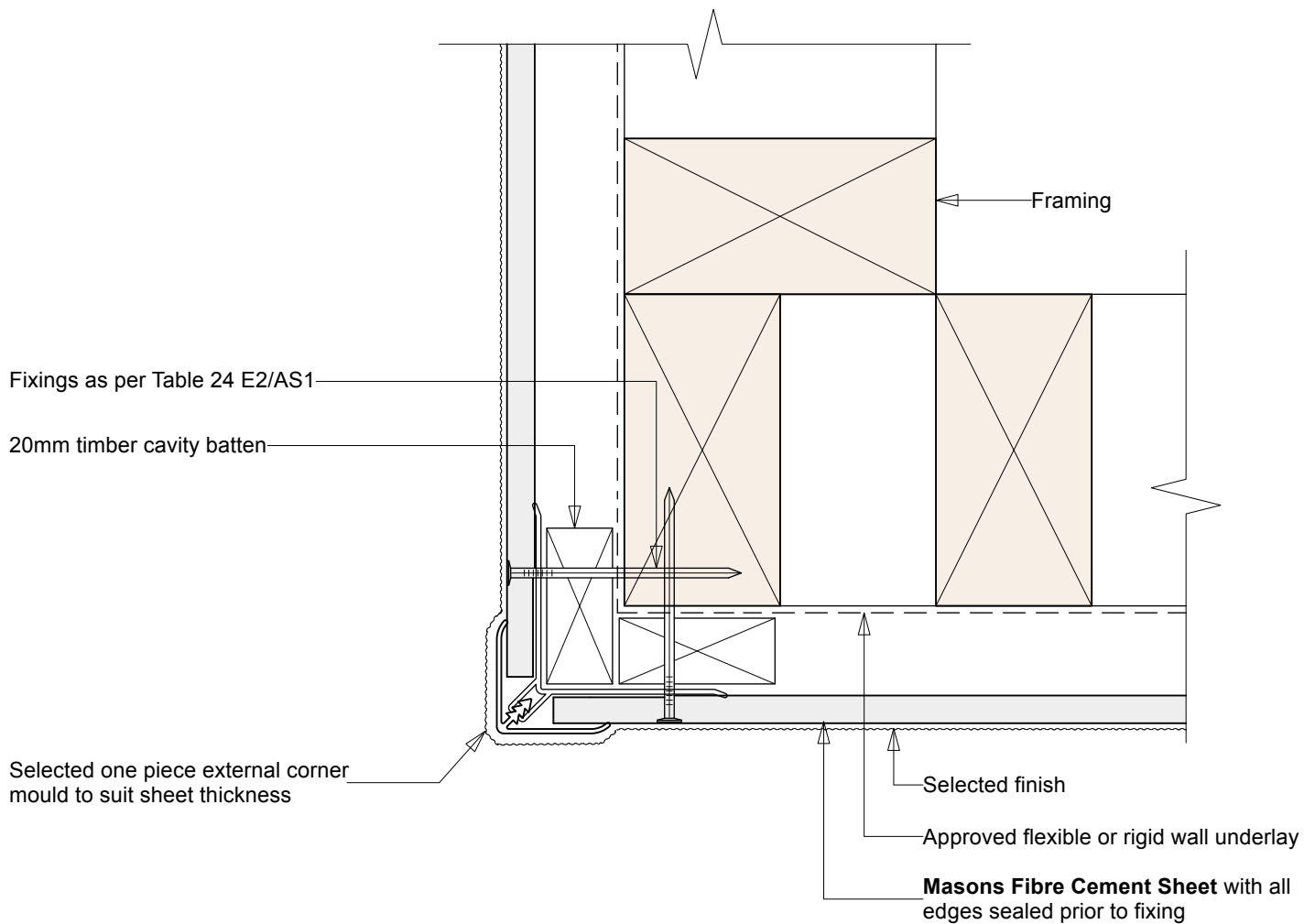
Date:

10/02/25

uPVC External Corner Joint - Cavity Fix
non habitable

Drawing No.

MPB - FC-12



Notes:

When 50 year durability is required please refer to Table 20 of the NZBC

Approved Masons underlays: Uni Plus, Unit Pro, Barricade FR, Barricade Weather Defense System or similar



MASONS
Designed Smart, Built Tough.

Masons Fibre Cement Sheet

Timber Batten External Corner
Joint - Direct Fix - non habitable

Scale:

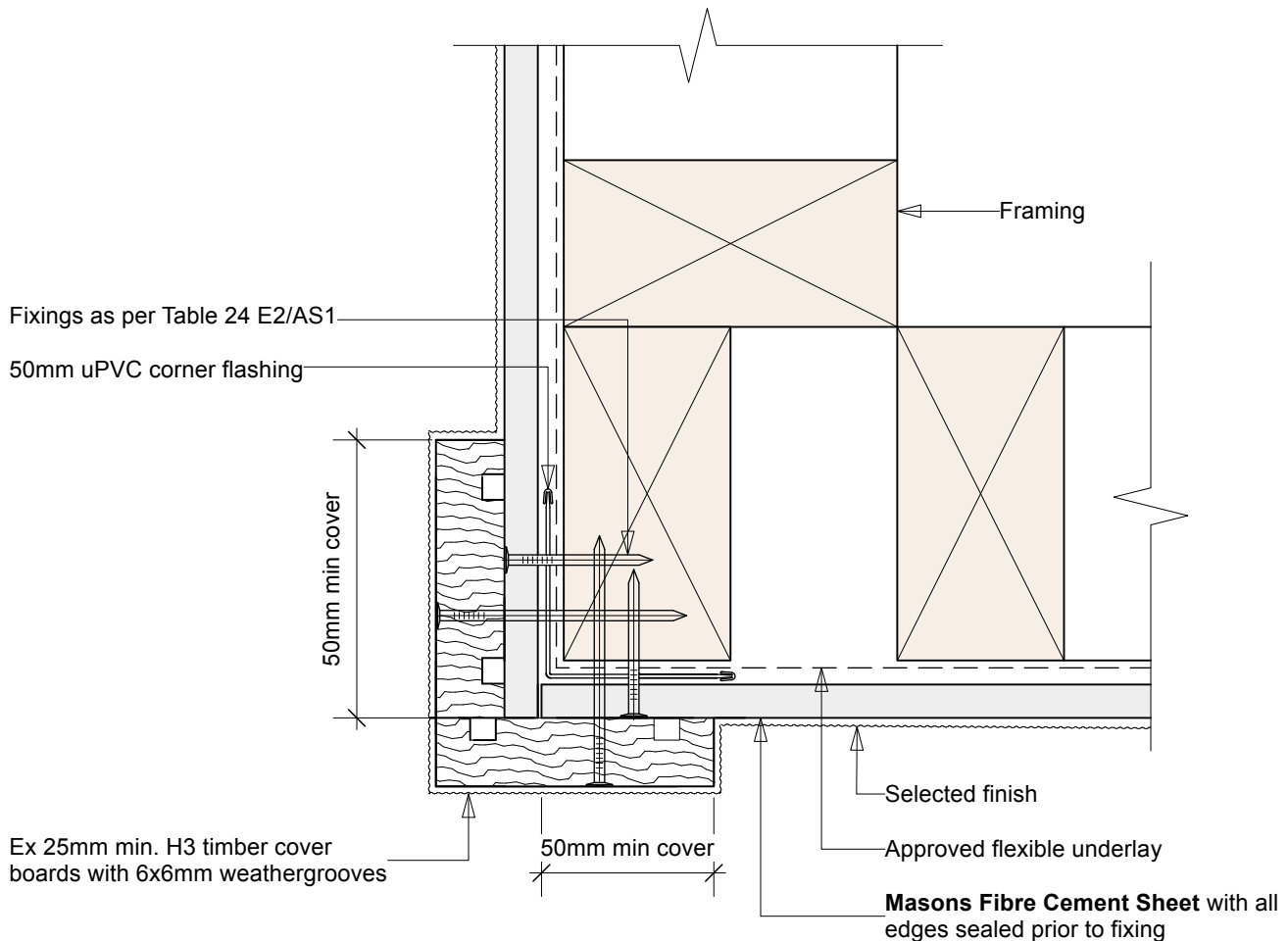
1:2

Date:

10/02/25

Drawing No.

MPB - FC-13



Notes:

When 50 year durability is required please refer to Table 20 of the NZBC
Approved Masons underlays: Uni Plus, Unit Pro, Barricade FR or similar



MASONS
Designed Smart, Built Tough.

Masons Fibre Cement Sheet

Timber Batten External Corner
Joint - Cavity Fix

Scale:

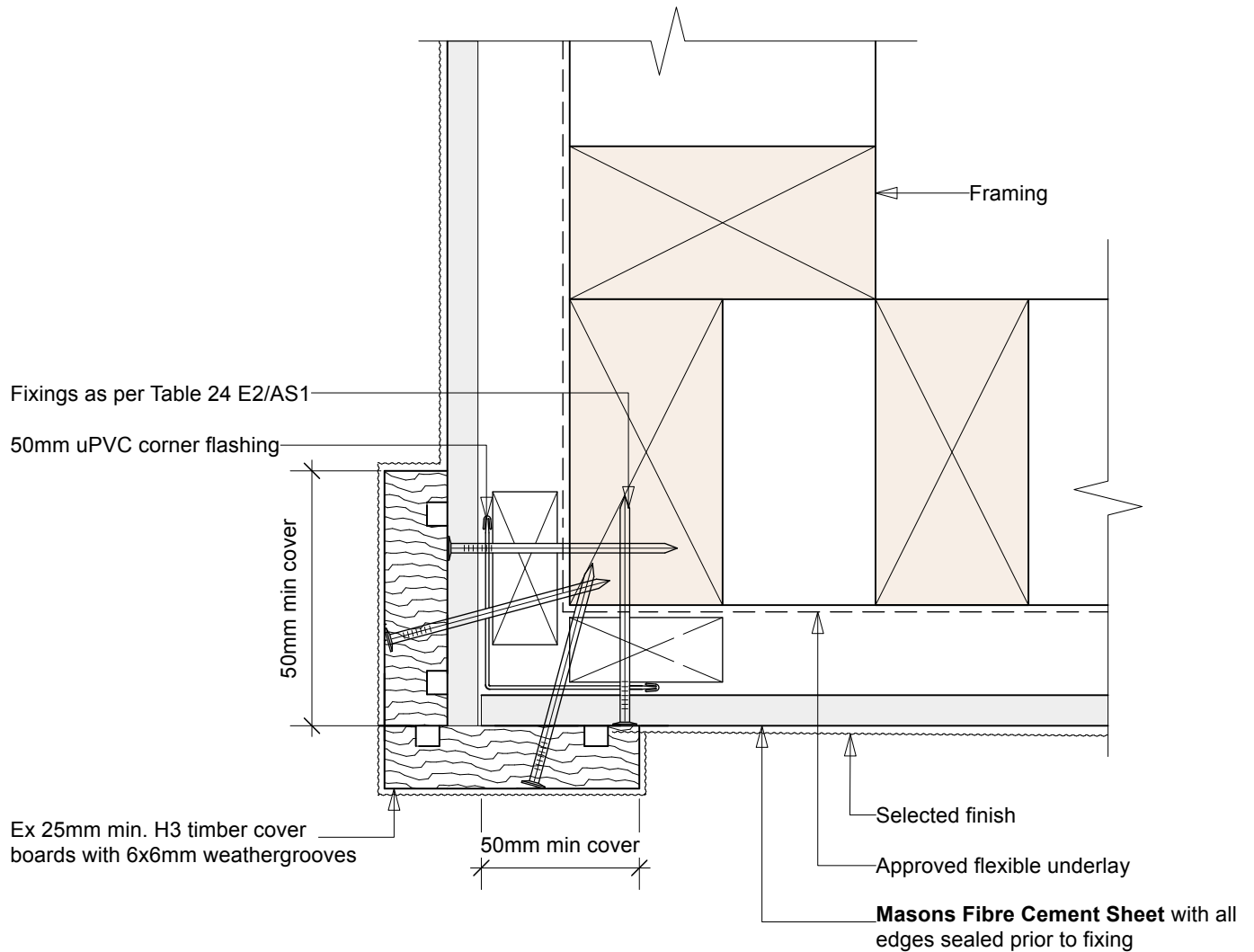
1:2

Date:

10/02/25

Drawing No.

MPB - FC-14



Notes:

When 50 year durability is required please refer to Table 20 of the NZBC

Approved Masons underlays: Uni Plus, Unit Pro, Barricade FR, Barricade Weather Defense System or similar



MASONS
Designed Smart, Built Tough.

Masons Fibre Cement Sheet

Horizontal Joint - Direct Fix
non habitable

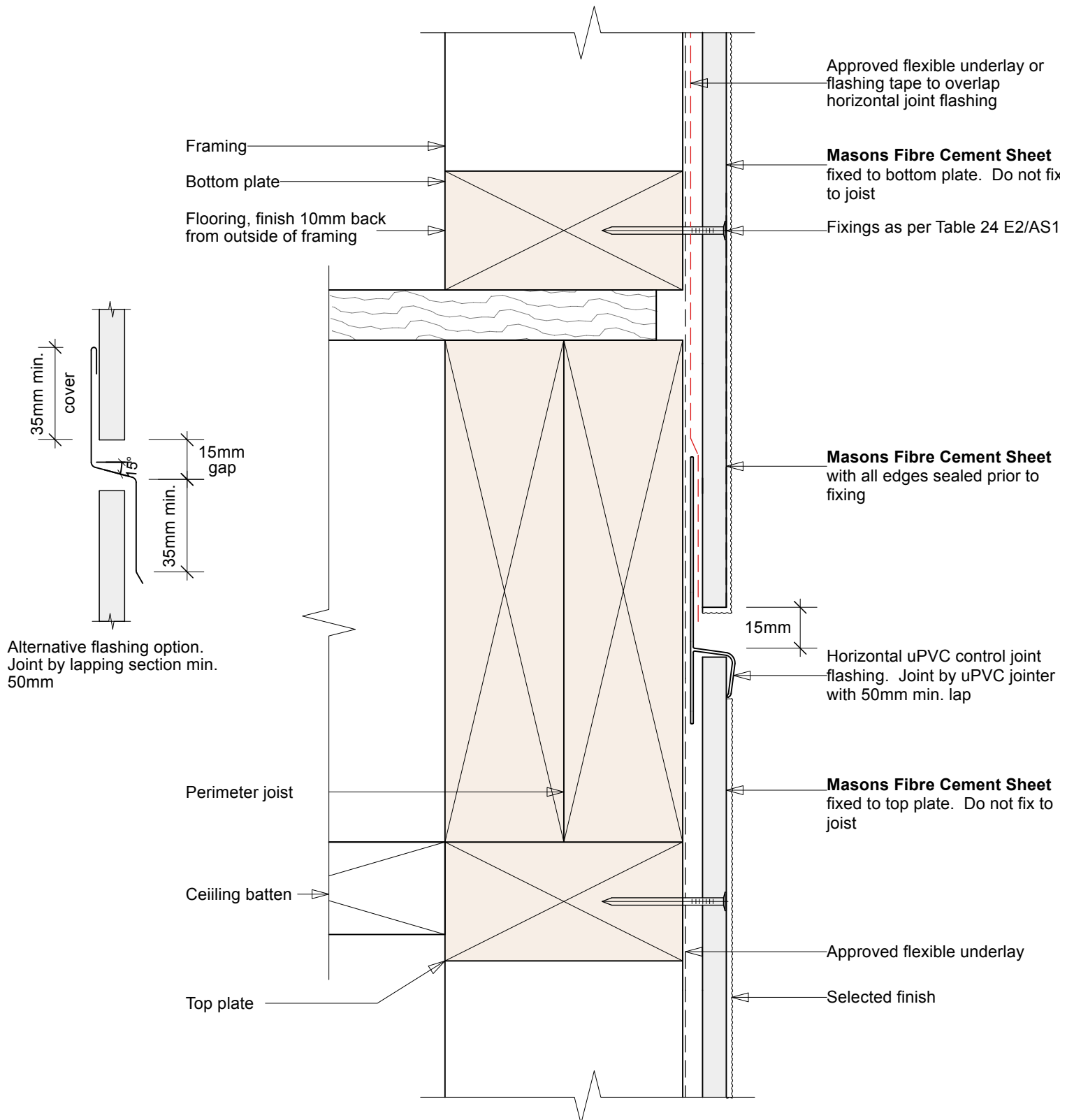
Scale:

1:2

Date:

10/02/25

Drawing No.

MPB - FC-15

Notes:

When 50 year durability is required please refer to Table 20 of the NZBC

Approved Masons flexible underlays: Uni Plus, Unit Pro, Barricade FR or similar



MASONS
Designed Smart, Built Tough.

Masons Fibre Cement Sheet

Scale:

1:2

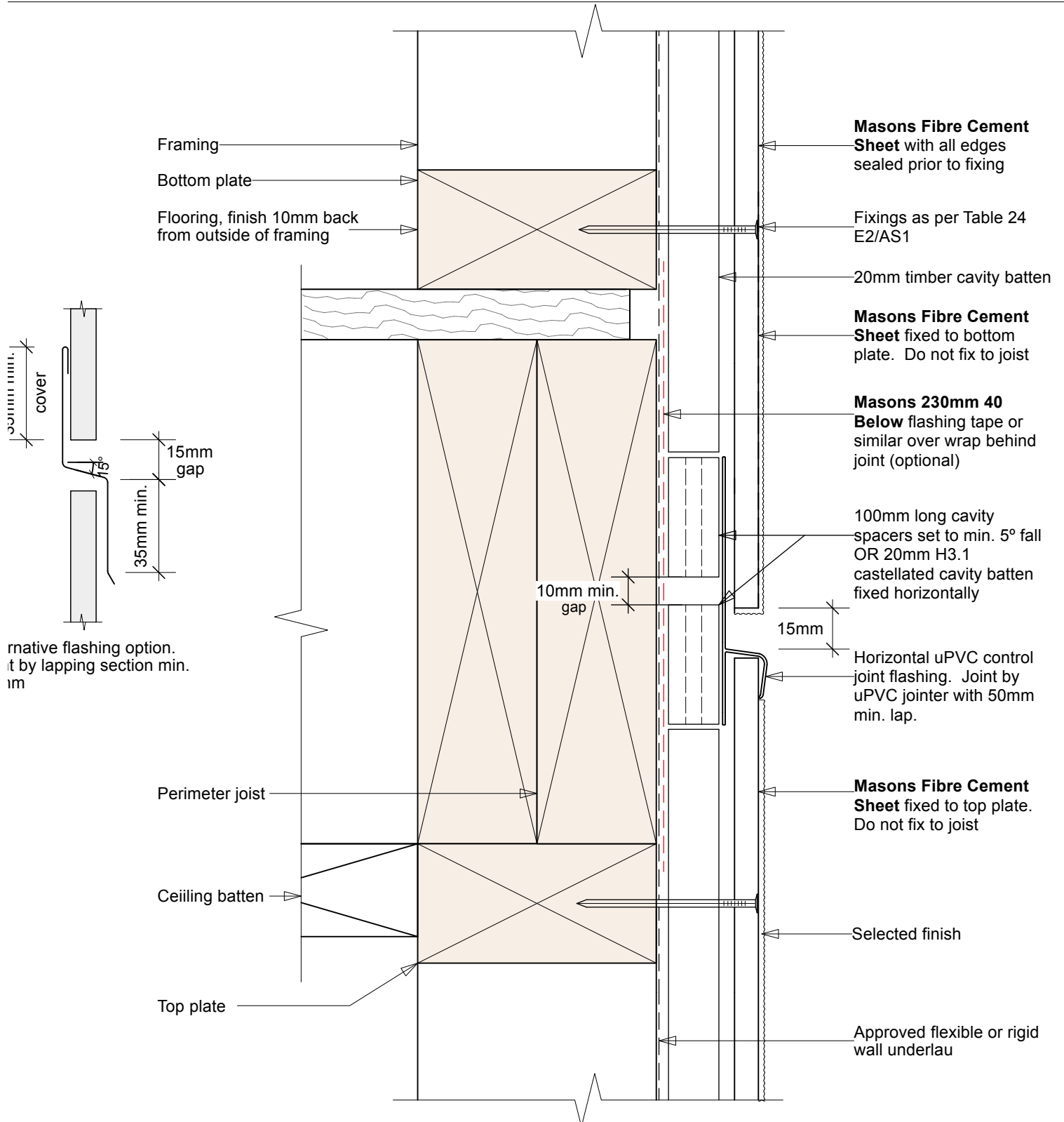
Date:

10/02/25

Drawing No.

MPB - FC-16

Horizontal Joint - Cavity Fix



Notes:

When 50 year durability is required please refer to Table 20 of the NZBC

Approved Masons underlays: Uni Plus, Unit Pro, Barricade FR, Barricade Weather Defense System or similar

Approved Masons 40 Below Flashing Tapes: Ultra Sticky, Platinum, Flex or similar

Only suitable for up to 2 storeys or 7m in height. For cavities over 2 storeys in height. Refer to Fig.70 E2/AS1



MASONS
Designed Smart, Built Tough.

Masons Fibre Cement Sheet

Scale:

1:2

Date:

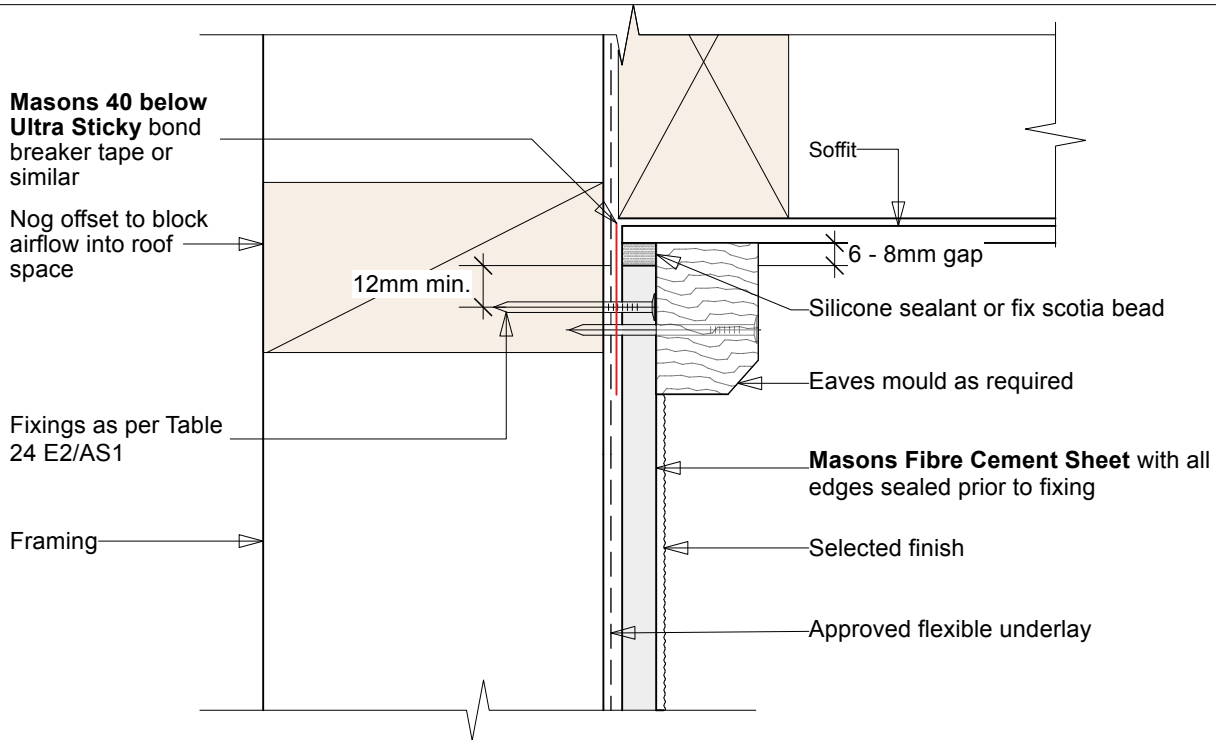
10/02/25

Drawing No.

MPB - FC-17

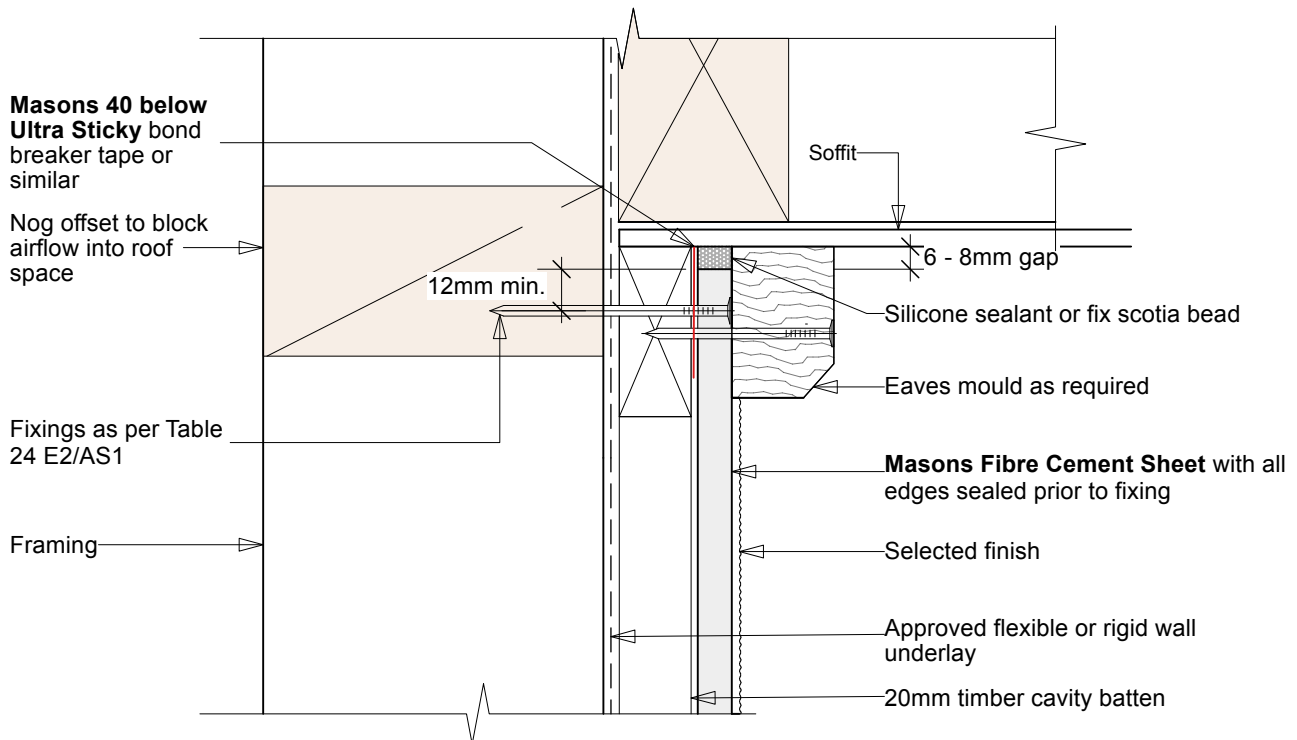
MPB - FC-18

Soffit Details



Direct Fix - non habitable

MPB - FC-17



Cavity Fix

MPB - FC-18

Notes:

When 50 year durability is required please refer to Table 20 of the NZBC

Approved Masons underlays: Uni Plus, Unit Pro, Barricade FR, Barricade Weather Defense System or similar



MASONS
Designed Smart, Built Tough.

Masons Fibre Cement Sheet

Window Head Detail - Direct Fix
non habitable

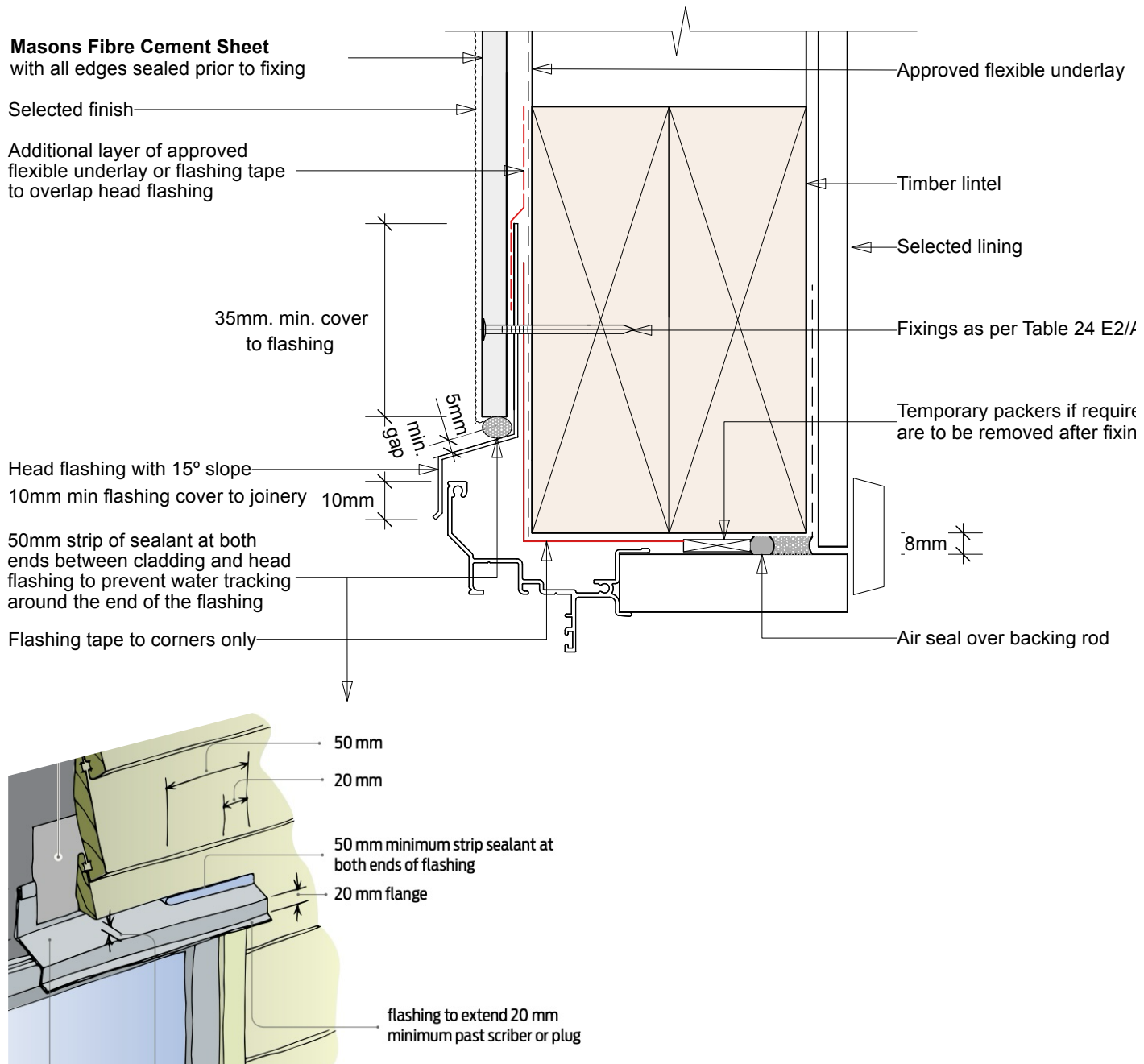
Scale:

1:2

Date:

10/02/25

Drawing No.

MPB - FC-19

Showing 50mm sealant to corners - similar

Notes:

- 1) To be read in conjunction with Fig.115 E2/AS1
- 2) Window profile to be selected to achieve cover shown in details
- 3) Architraves are shown for consistency only, detail may be used with rebated liner
- 4) Refer Fig. 72A E2/AS1 for wrapping of framed opening prior to window installation
- 5) Refer Fig. 71C E2/AS1 for metal head flashing sealant for **Very High and Extra High wind zones**
- 6) When 50 year durability is required please refer to Table 20 of the NZBC
- 7) Approved Masons flexible underlays: Uni Plus, Unit Pro, Barricade FR or similar
- 8) Approved Masons 40 Below Flashing Tapes: Ultra Sticky, Platinum, Flex or similar



MASONS
Designed Smart, Built Tough.

Masons Fibre Cement Sheet

Scale:

1:2

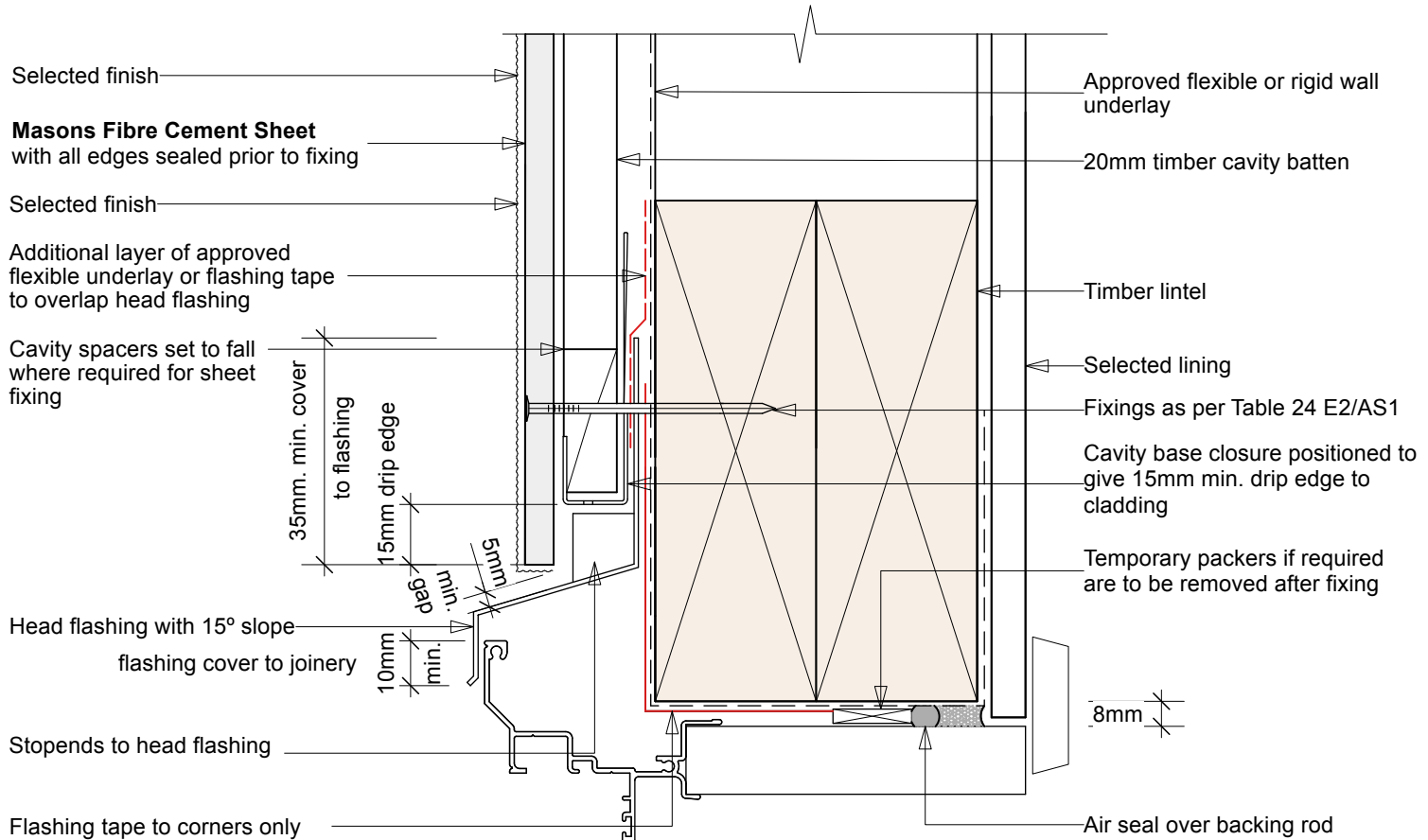
Date:

10/02/25

Drawing No.

MPB - FC-20

Window Head Detail - Cavity Fix



Notes:

- 1) To be read in conjunction with Fig.116 E2/AS1
- 2) Window profile to be selected to achieve cover shown in details
- 3) Architraves are shown for consistency only, detail may be used with rebated liner
- 4) Refer Fig. 72A E2/AS1 for wrapping of framed opening prior to window installation
- 5) Refer Fig. 71C E2/AS1 for metal head flashing sealant for **Very High and Extra High wind zones**
- 6) When 50 year durability is required please refer to Table 20 of the NZBC
- 7) Approved Masons underlays: Uni Plus, Unit Pro, Barricade FR, Barricade Weather Defense System or similar
- 8) Approved Masons 40 Below Flashing Tapes: Ultra Sticky, Platinum, Flex or similar



MASONS
Designed Smart, Built Tough.

Masons Fibre Cement Sheet

Scale:

1:2

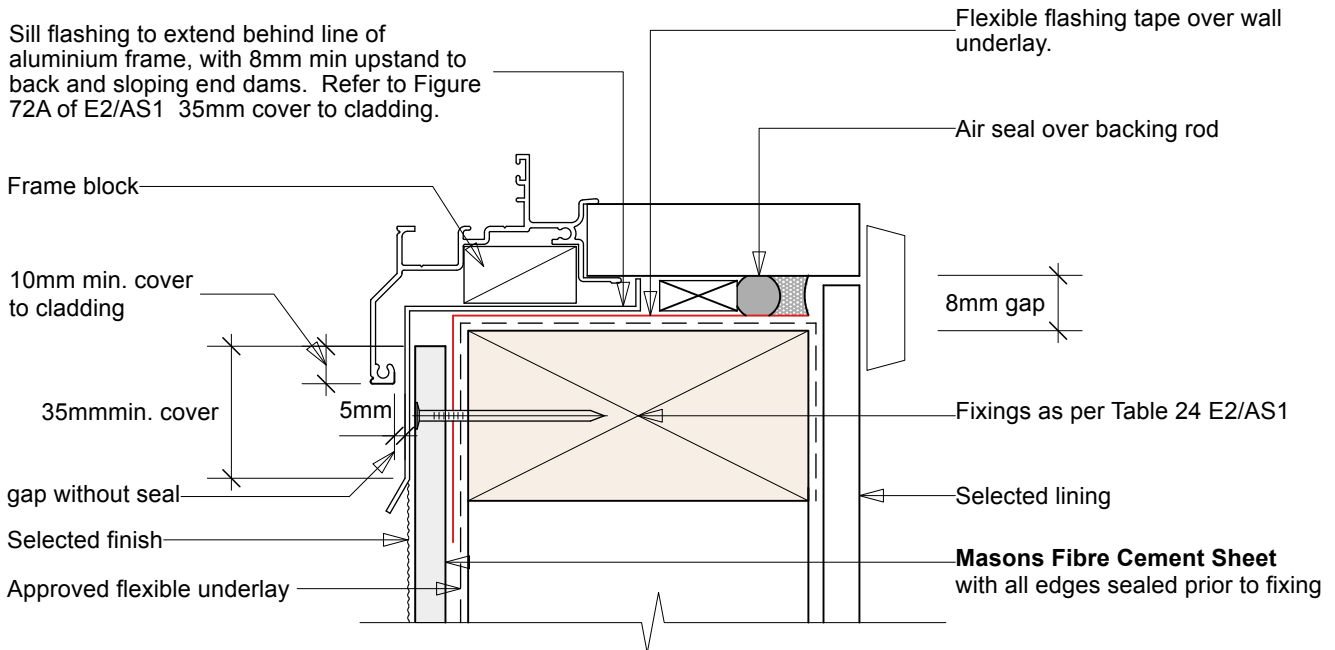
Date:

10/02/25

Drawing No.

MPB - FC-21**MPB - FC-22**

Window Sill Details

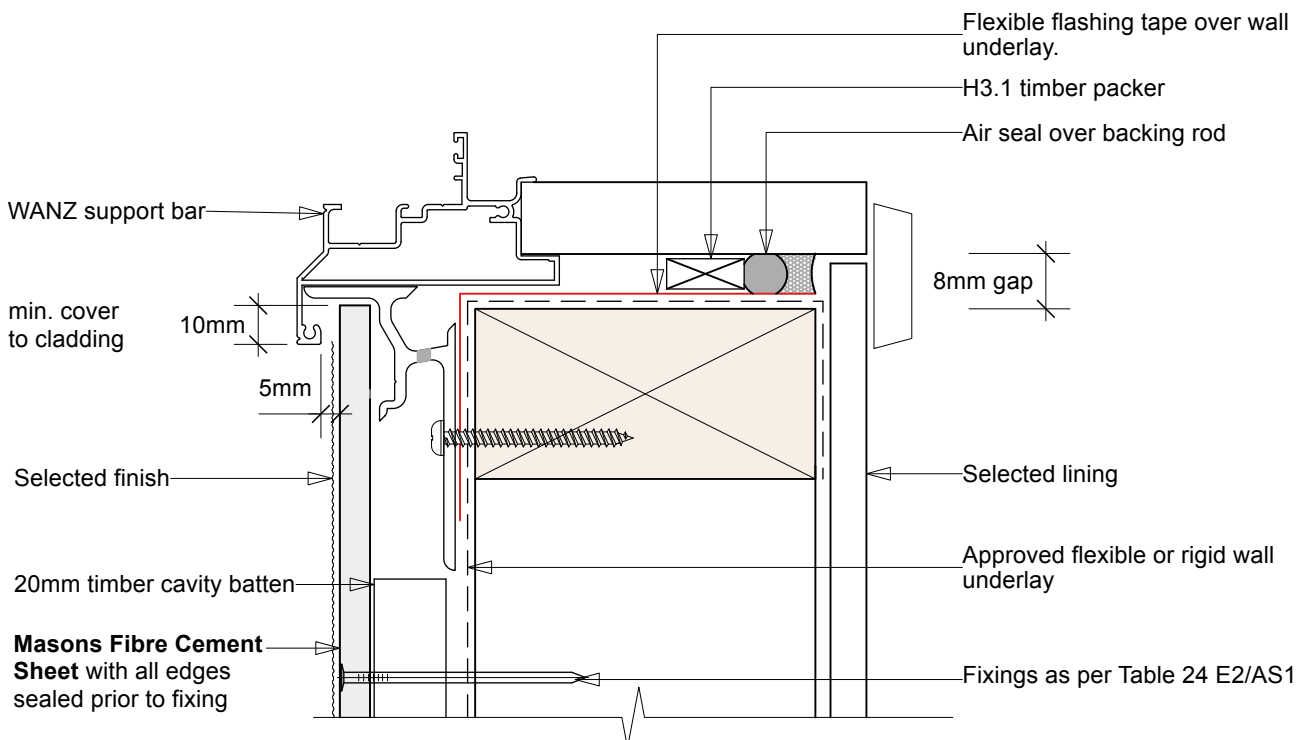


Direct Fix - non habitable

MPB - FC-21

Notes:

- 1) To be read in conjunction with Fig.115 and 116 E2/AS1
- 2) Window profile to be selected to achieve cover shown in details
- 3) Architraves are shown for consistency only, detail may be used with rebated liner
- 4) Refer Fig. 72A E2/AS1 for wrapping of framed opening prior to window installation
- 5) For flashing materials refer to Table 20 E2/AS1 & NZS3604.
- 6) Underlays and flashings tapes to comply with E2/AS1 - refer manufacturers specifications
- 7) Approved Masons underlays: Uni Plus, Uni Pro, Barricade FR, Barricade Weather Defense System or similar
- 8) Approved Masons 40 Below Flashing Tapes: Ultra Sticky, Platinum, Flex or similar
- 9) Sill support bart required conforming with EM6 and Paragraph 9.1.10.5, refer Fig. 72B



Cavity Fix

MPB - FC-22



MASONS
Designed Smart, Built Tough.

Masons Fibre Cement Sheet

Scale:

1:2

Date:

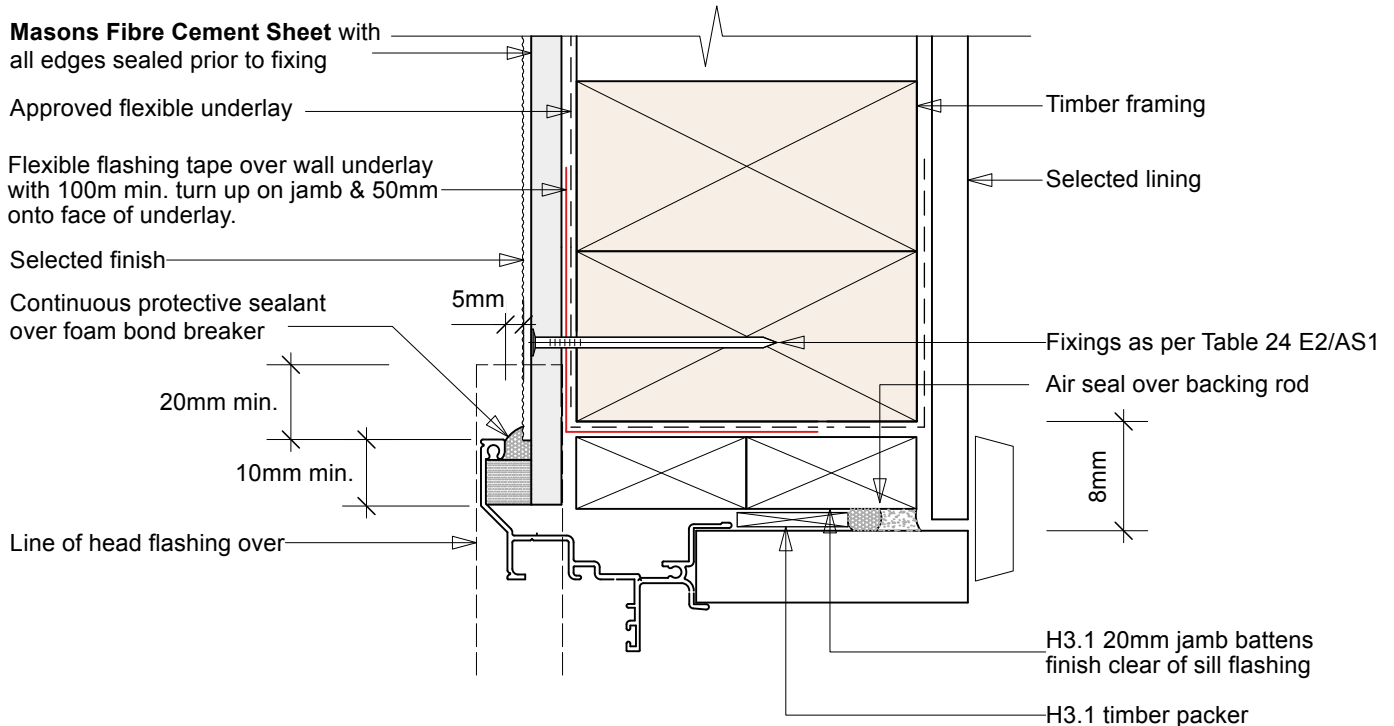
10/02/25

Drawing No.

MPB - FC-23

MPB - FC-24

Window Jamb Details

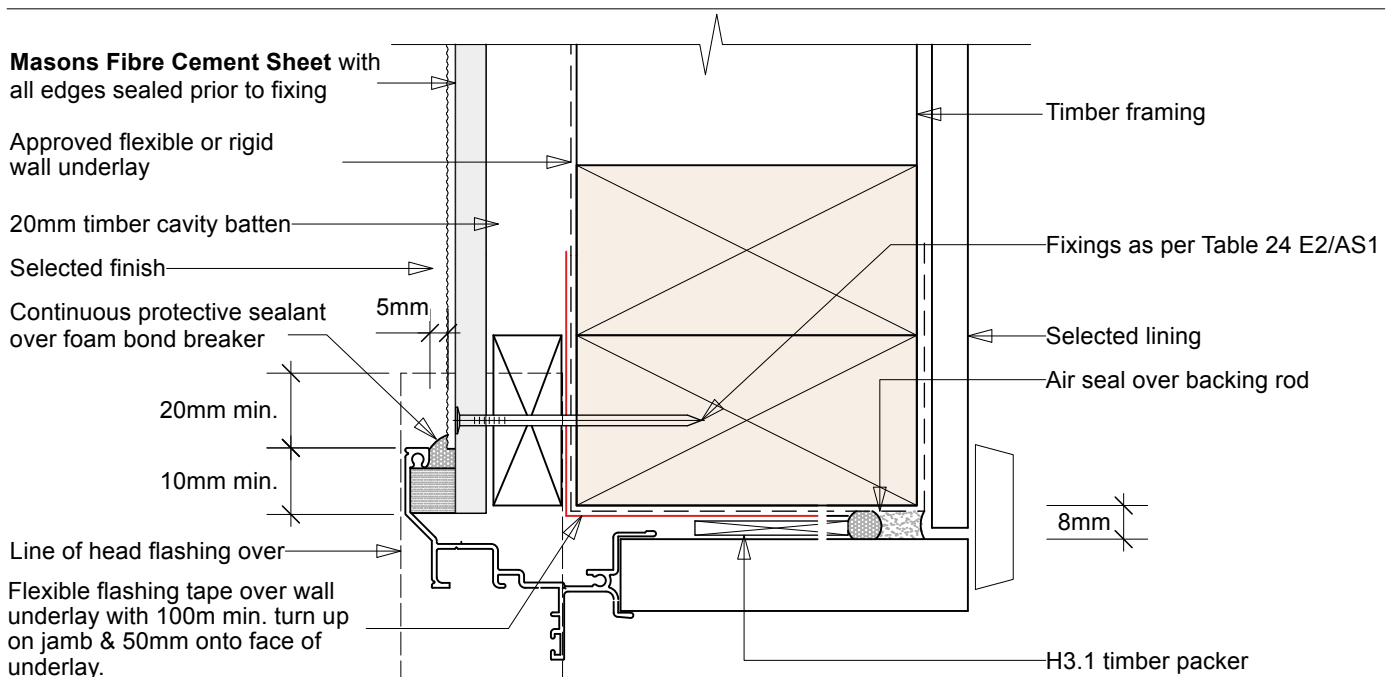


Direct Fix - non habitable

MPB - FC-23

Notes:

- 1) To be read in conjunction with Fig.115 and 116 E2/AS1
- 2) Window profile to be selected to achieve cover shown in details
- 3) Architraves are shown for consistency only, detail may be used with rebated liner
- 4) Refer Fig. 72A E2/AS1 for wrapping of framed opening prior to window installation]
- 5) Underlays and flashings tapes to comply with E2/AS1 - refer manufacturers specifications
- 6) Approved Masons underlays: Uni Plus, Uni Pro, Barricade FR, Barricade Weather Defense System or similar
- 7) Approved Masons 40 Below Flashing Tapes: Ultra Sticky, Platinum, Flex or similar



Cavity Fix

MPB - FC-24



MASONS
Designed Smart, Built Tough.

Masons Fibre Cement Sheet

Scale:

1:2

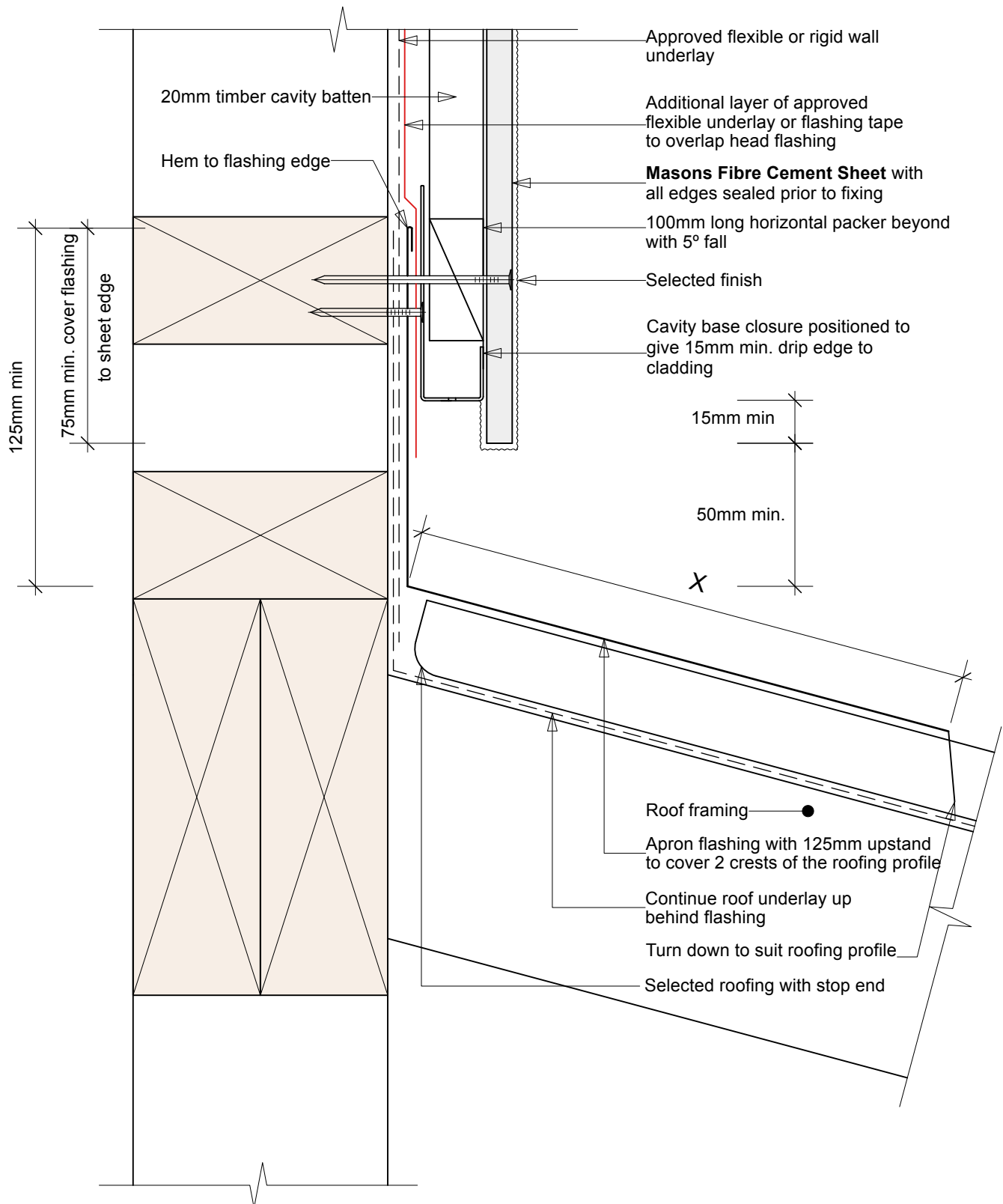
Date:

10/02/25

Drawing No.

MPB - FC-25

Transverse Apron Flashing Detail



Notes:

- 1) When 50 year durability is required please refer to Table 20 of the NZBC
- 2) Underlays and flashings tapes to comply with E2/AS1 - refer manufacturers specifications
- 3) Approved Masons underlays: Uni Plus, Unit Pro, Barricade FR, Barricade Weather Defense System or similar
- 4) Approved Masons 40 Below Flashing Tapes: Ultra Sticky, Platinum, Flex or similar
- 5) 'X' - Refer Fig.44 and Table 7 of. E2/AS1



MASONS
Designed Smart, Built Tough.

Masons Fibre Cement Sheet

Parallel Apron Flashing Detail

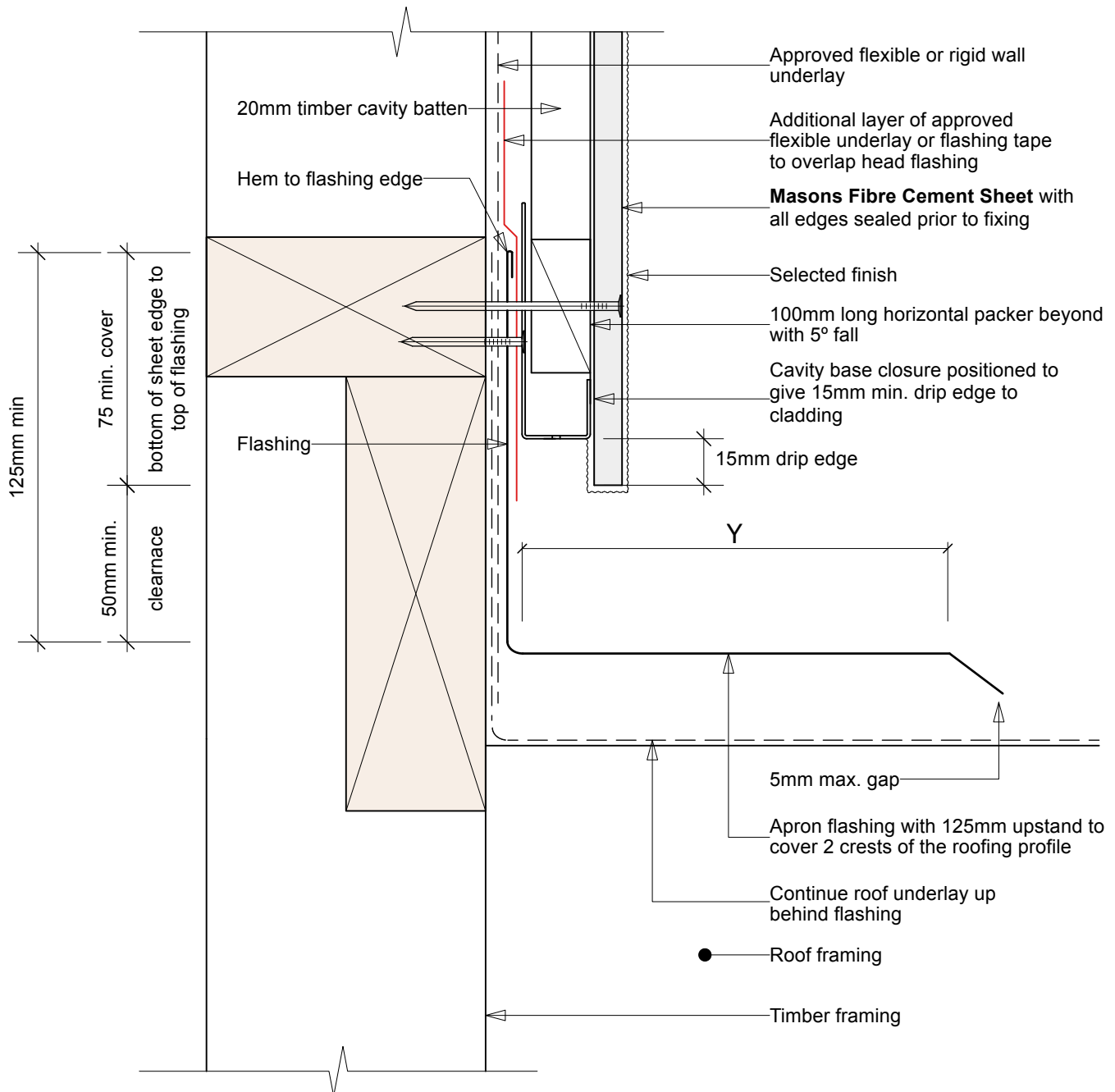
Scale:

1:2

Date:

10/02/25

Drawing No.

MPB - FC-26

Notes:

- 1) When 50 year durability is required please refer to Table 20 of the NZBC
- 2) Underlays and flashings tapes to comply with E2/AS1 - refer manufacturers specifications
- 3) Approved Masons underlays: Uni Plus, Unit Pro, Barricade FR, Barricade Weather Defense System or similar
- 4) Approved Masons 40 Below Flashing Tapes: Ultra Sticky, Platinum, Flex or similar
- 5) 'Y' - Refer Fig.48 and Table 7 of E2/AS1



MASONS
Designed Smart, Built Tough.

Masons Fibre Cement Sheet

Parapet Flashing Detail

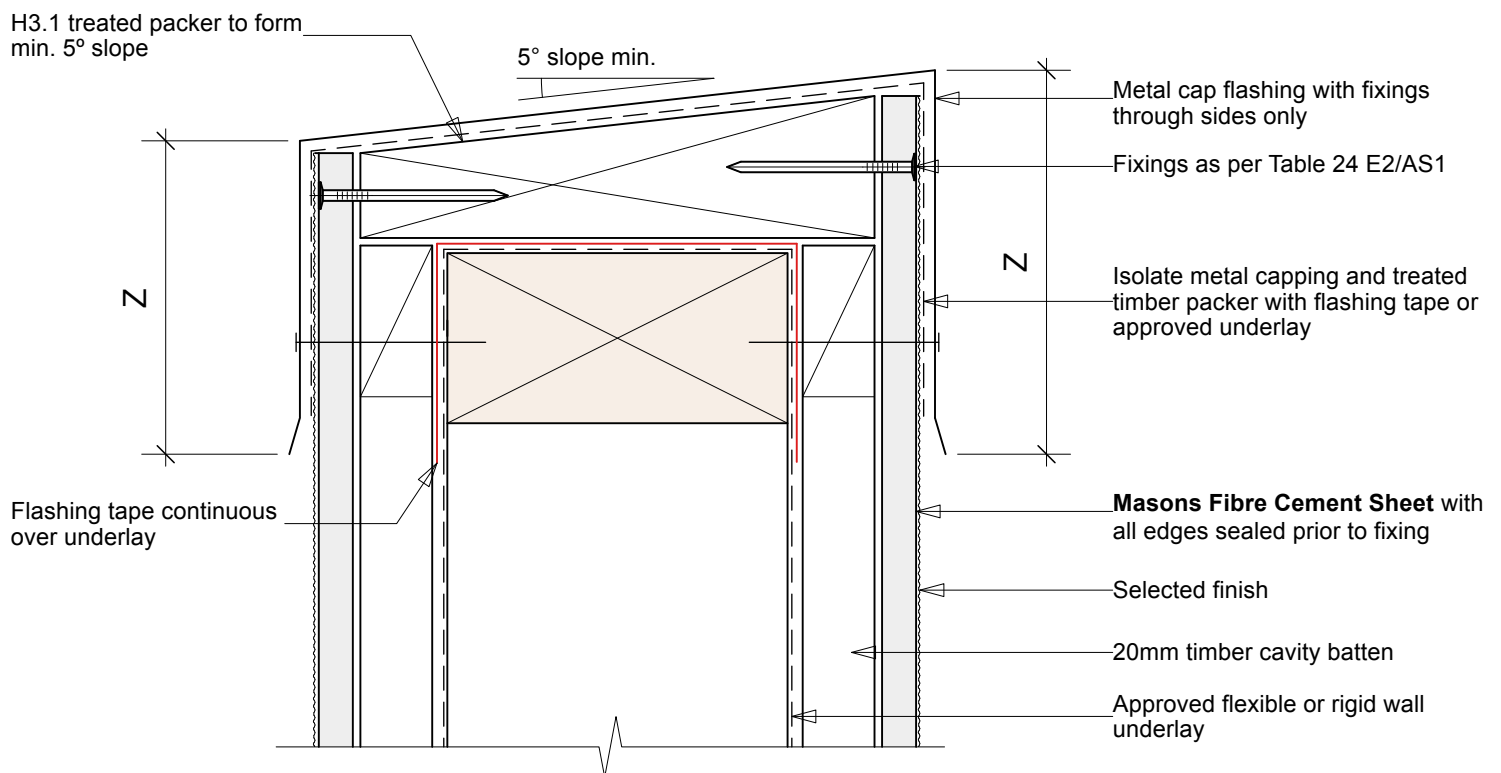
Scale:

1:2

Date:

10/02/25

Drawing No.

MPB - FC-27

Notes:

- 1) When 50 year durability is required refer to Table 20 of the NZBC
- 2) Underlays and flashings tapes to comply with E2/AS1 - refer manufacturers specifications
- 3) Approved Masons underlays: Uni Plus, Unit Pro, Barricade FR, Barricade Weather Defense System or similar
- 4) Approved Masons 40 Below Flashing Tapes: Ultra Sticky, Platinum, Flex or similar
- 5) 'Z' - Table 7 of E2/AS1.
- 6) Refer Fig.117 E2/AS1 - similar



MASONS
Designed Smart, Built Tough.

Masons Fibre Cement Sheet

Pipe Penetration Detail

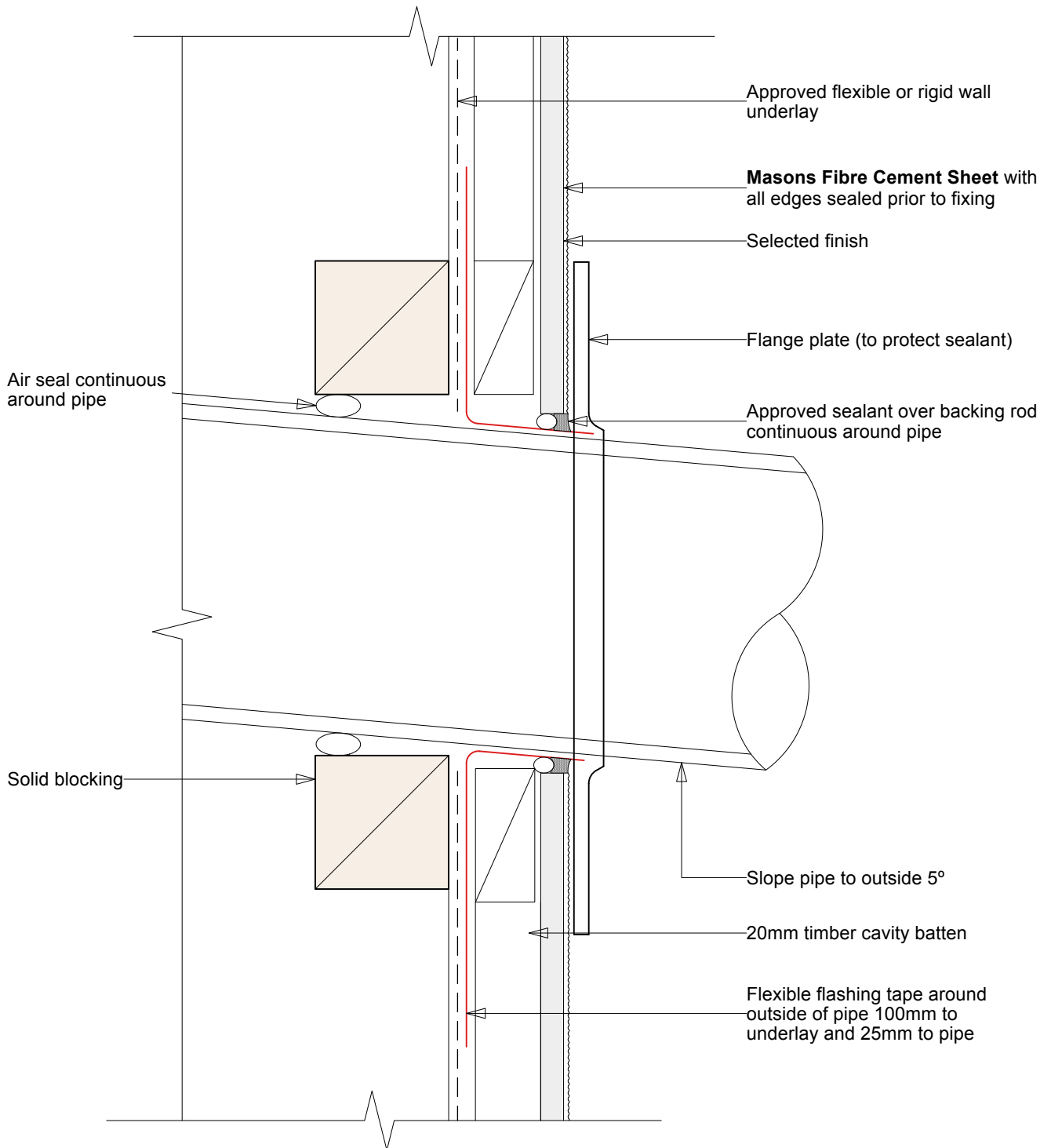
Scale:

1:2

Date:

10/02/25

Drawing No.

MPB - FC-28

Notes:

When 50 year durability is required please refer to Table 20 of the NZBC

Approved Masons underlays: Uni Plus, Unit Pro, Barricade FR, Barricade Weather Defense System or similar

Approved Masons 40 Below Flashing Tapes: Ultra Sticky, Platinum, Flex or similar



Masons Fibre Cement Sheet

Typical Fixing Pattern for
Cladding @ 400 crs

Scale:

1:2

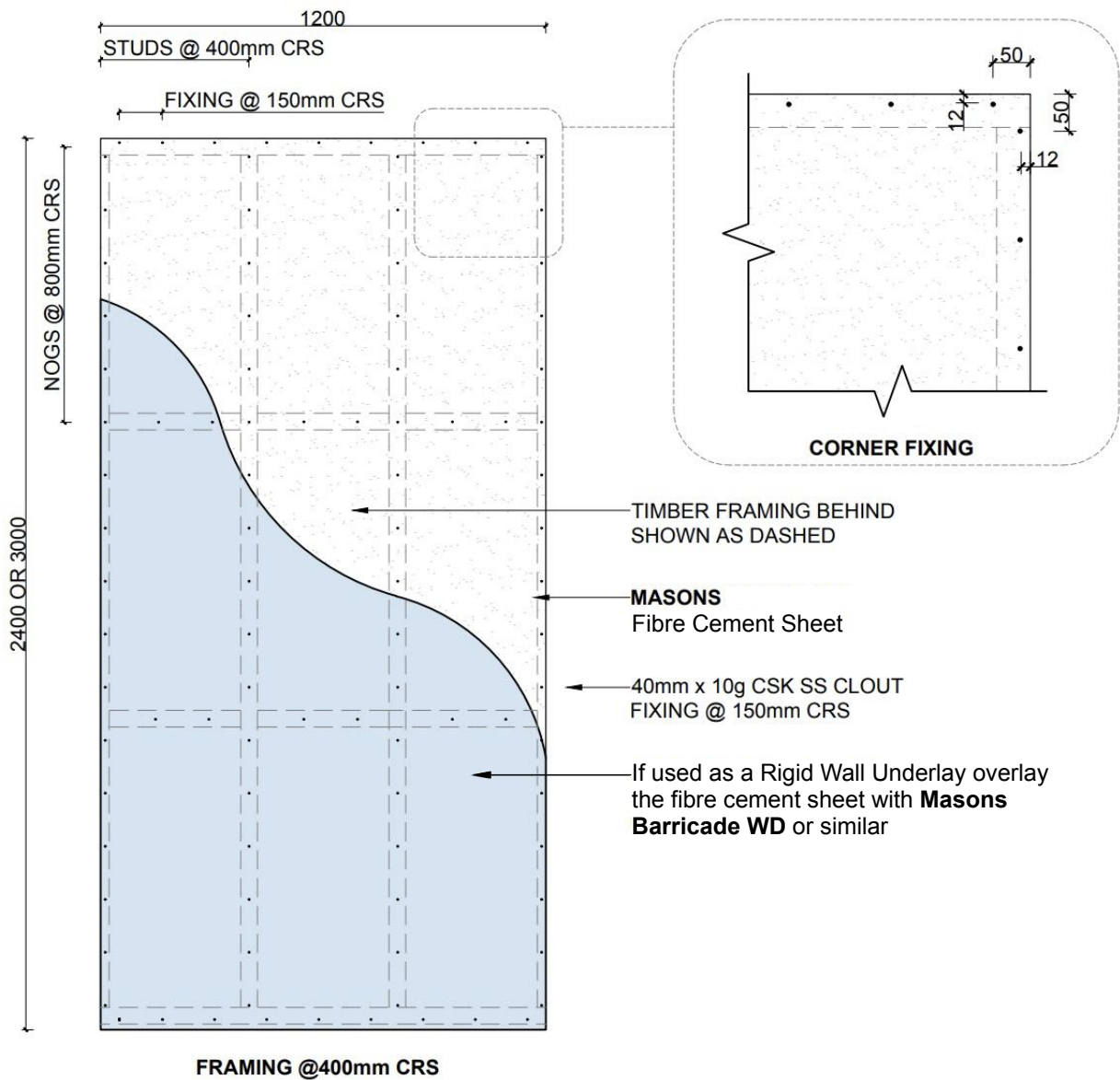
Date:

10/02/25

Drawing No.

MPB - FC-29

NOTE 1: FIXING INSTRUCTION	
EDGE FIXING DISTANCE 12mm MIN.	Stainless Steel or Galv. clouts (Refer Exposure Zone) hand nailed OR refer to Alternative nail type & fixing method in Barricade Weather Defense System documentation
CORNER FIXING DISTANCE 50mm HORIZONTALLY 150mm VERTICALLY	
GENERAL FIXING 150mm MAX. CRS	



- Notes:
- 1) Approved Masons underlays: Uni Plus, Unit Pro, Barricade FR, Barricade WD or similar



MASONS

Designed Smart, Built Tough.

Masons Fibre Cement Sheet

Typical Fixing Pattern for
framing @ 600 crs

Scale:

1:2

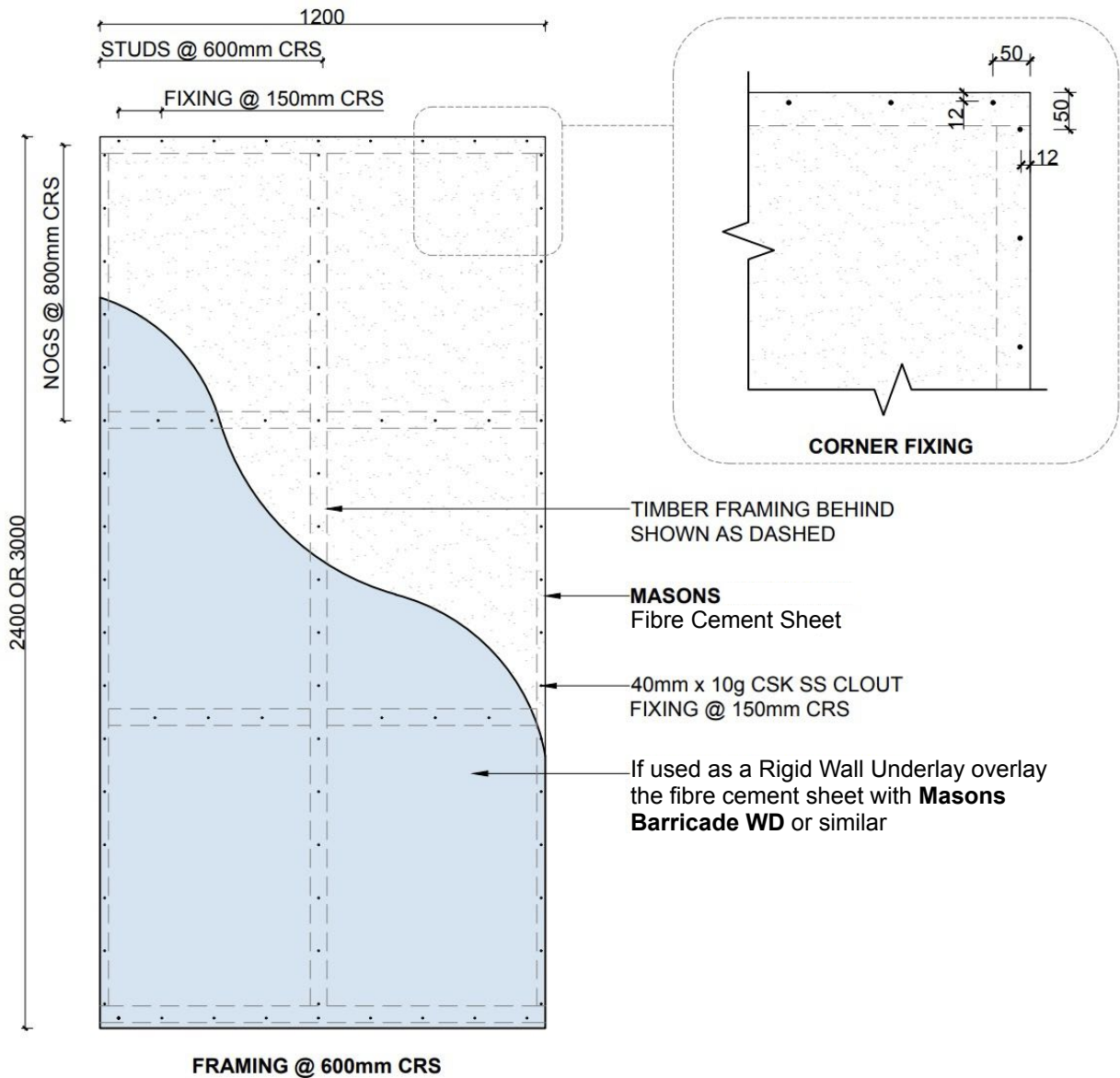
Date:

10/02/25

Drawing No.

MPB - FC-30

NOTE 1: FIXING INSTRUCTION	
EDGE FIXING DISTANCE 12mm MIN.	Stainless Steel or Galv. clouts (Refer Exposure Zone) hand nailed OR refer to Alternative nail type & fixing method in Barricade Weather Defense System documentation
CORNER FIXING DISTANCE 50mm HORIZONTALLY 150mm VERTICALLY	
GENERAL FIXING 150mm MAX. CRS	



Notes:

1) Approved Masons underlays: Uni Plus, Unit Pro, Barricade FR, Barricade WD or similar