

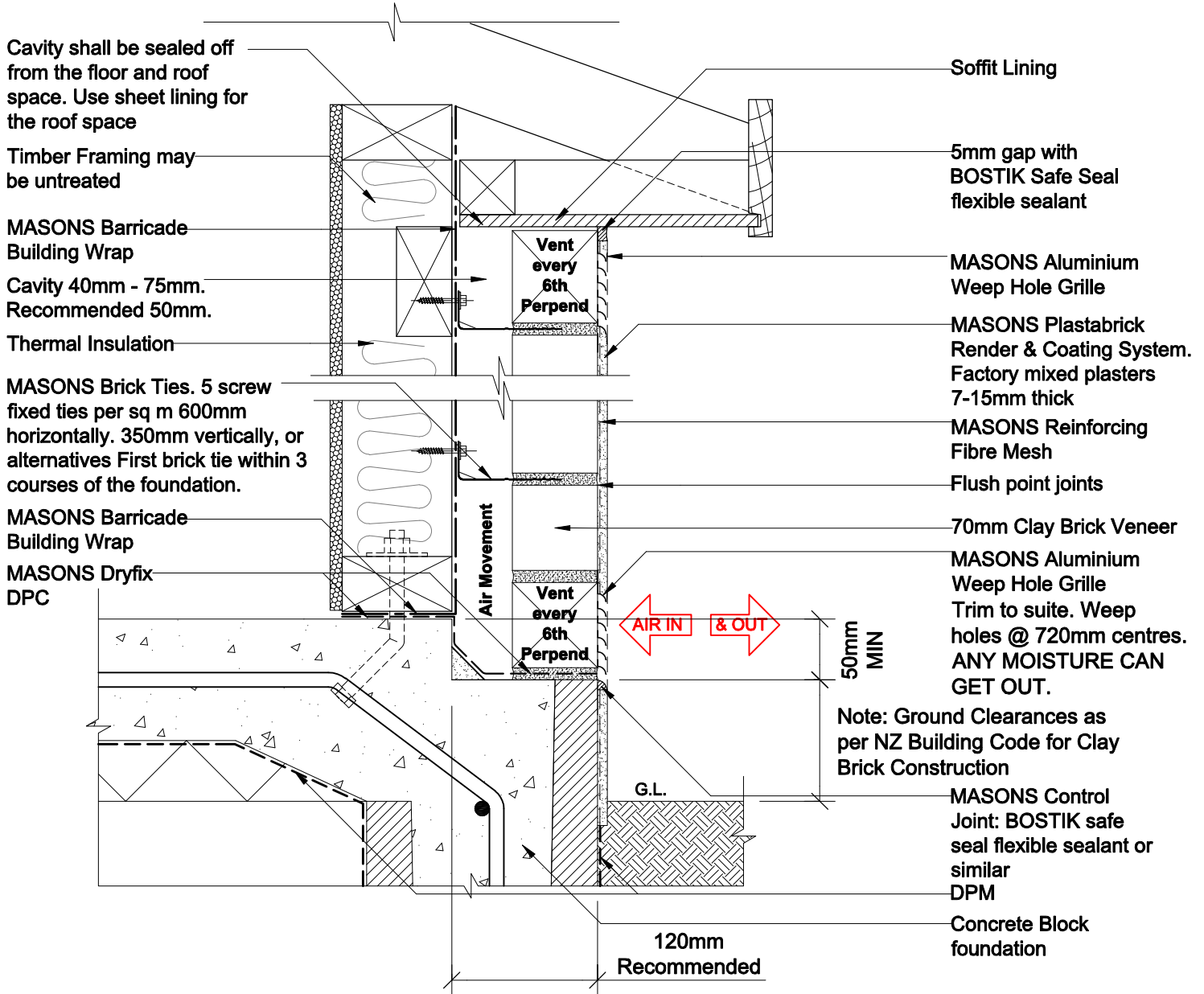


MANUAL

Masonry Render System Brick Veneer [Timber Framing]

DISCLOSURE NOTE:

The information provided is for guide only and must be used along side professional architectural/structural design. Professional architectural/structural design takes preference with any conflicting areas of the building design. All documents or data downloaded from www.mpb.co.nz or emailed from MASONS Plastabrick Limited is the intellectual property of MASONS Plastabrick Limited. MASONS Plastabrick Limited takes no responsibility for any of the documents or data being used for any other purpose than for professional architectural/structural design.

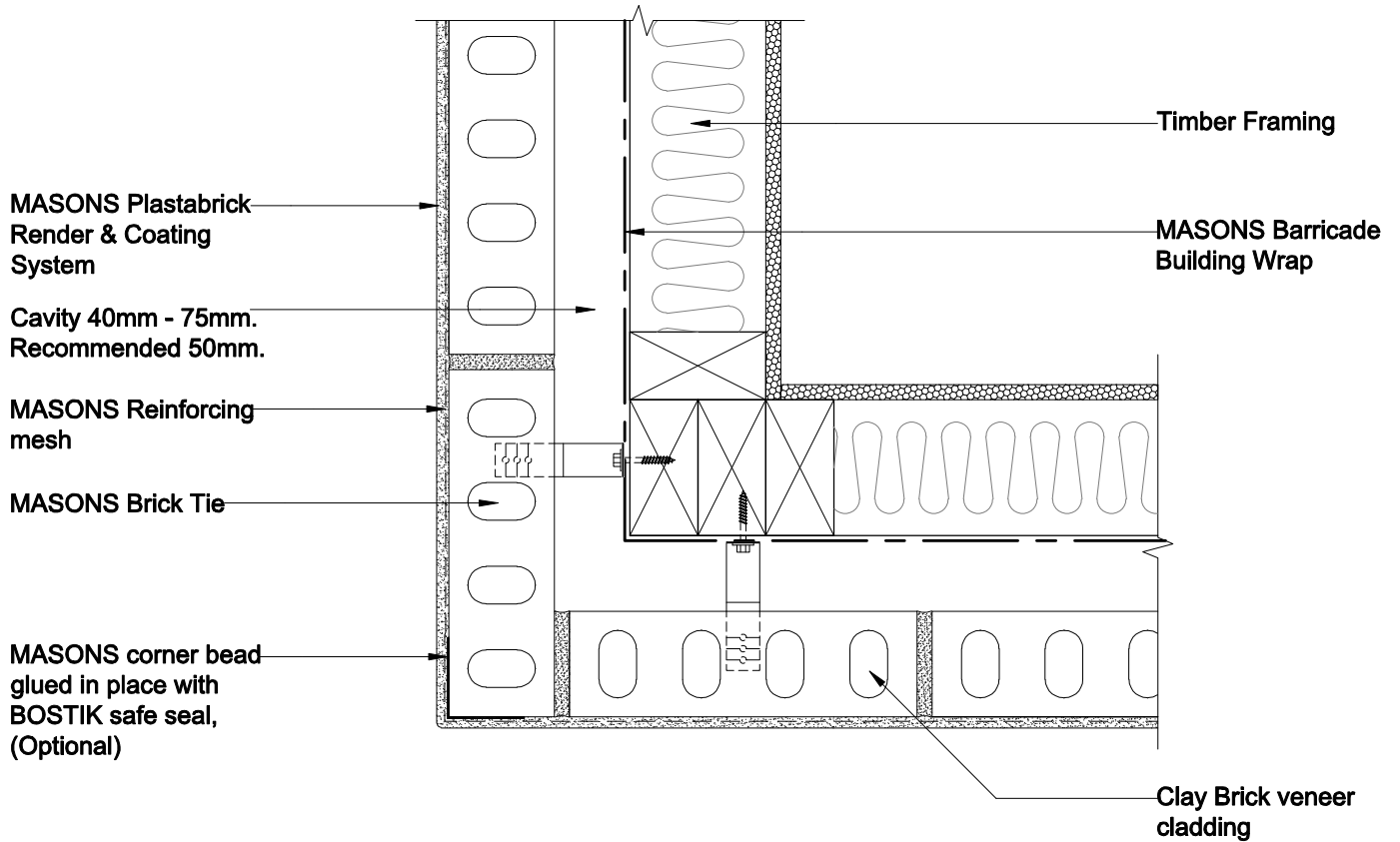


"70 series clay brick installed and plastered per MASONS Plastabrick Manual - 2014. Final colour and texture to be selected"

CROSS-SECTION

Detail 1 Scale 1:5

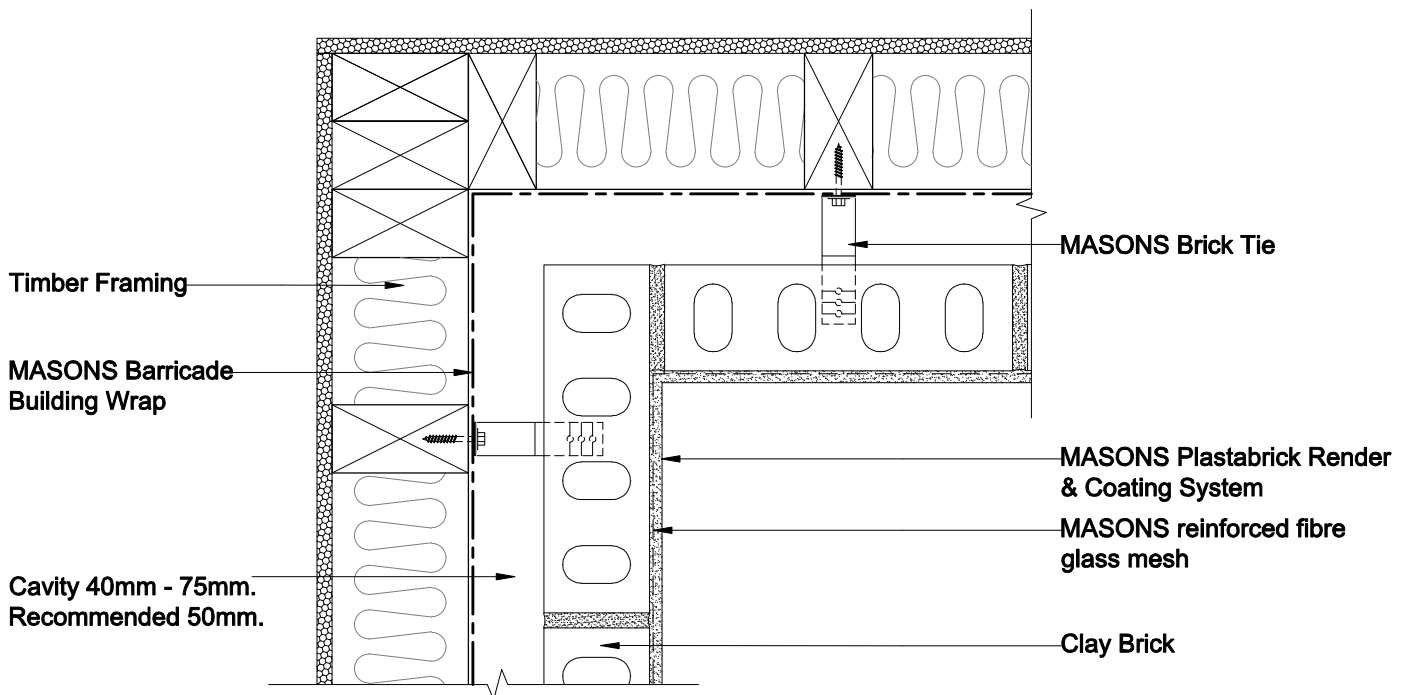
Masonry Render System - Brick Veneer (Timber Framing)



**BRICK VENEER -
External Corner**

Detail 2 Scale 1:5

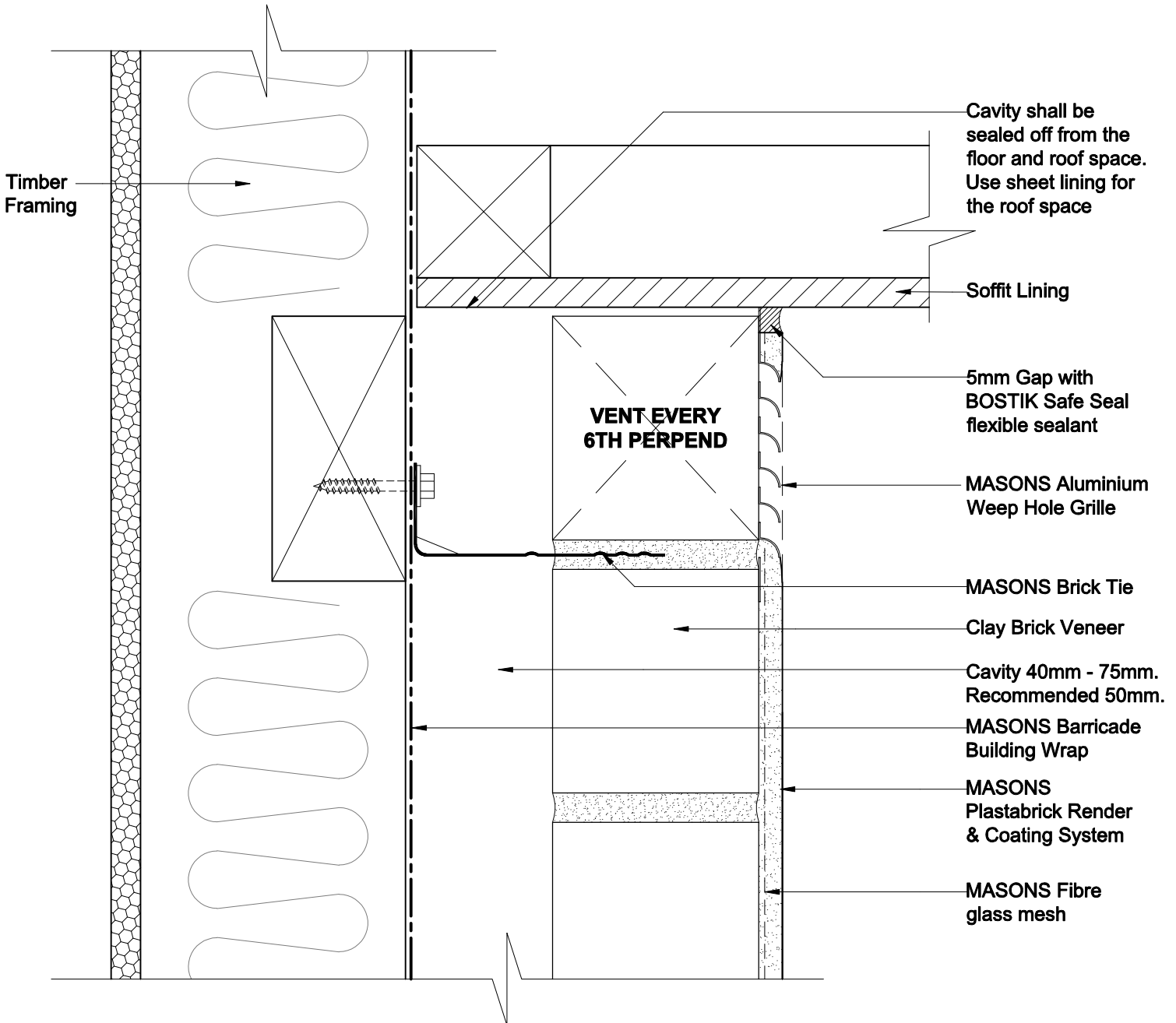
**Masonry Render System - Brick Veneer
(Timber Framing)**



BRICK VENEER - Internal Corner

Detail 3 Scale 1:5

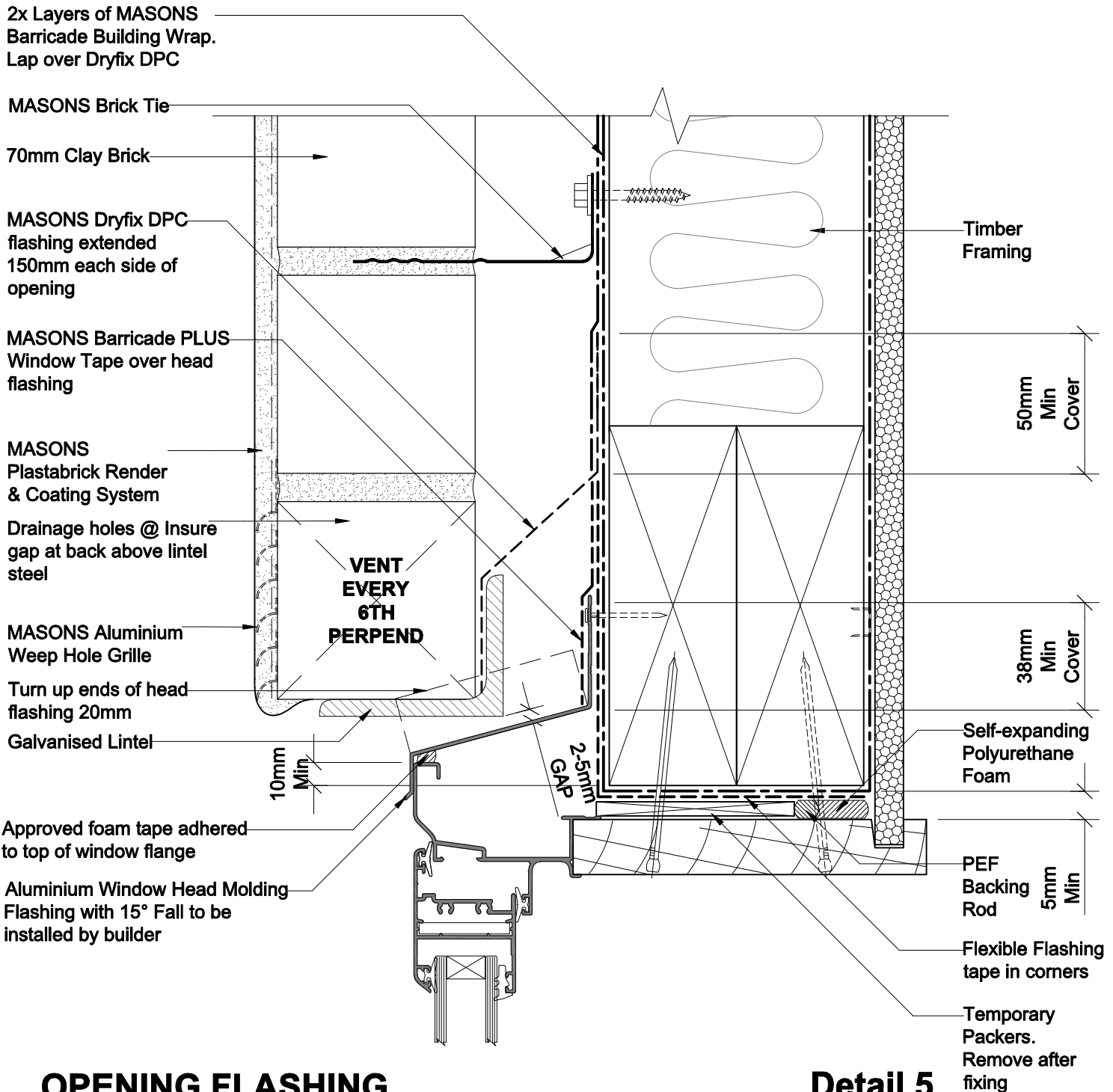
Masonry Render System - Brick Veneer (Timber Framing)



Soffit

Detail 4 Scale 1:2

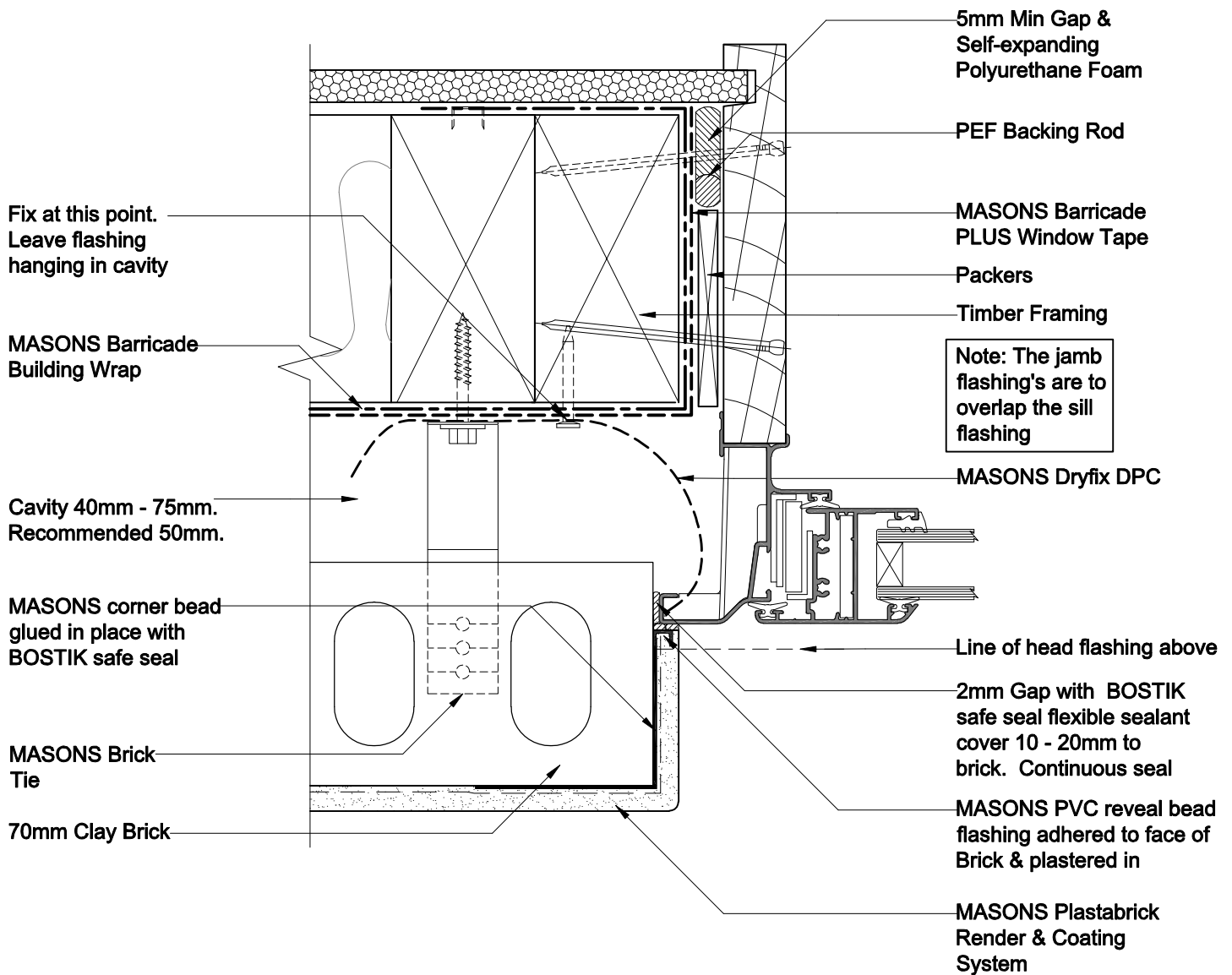
Masonry Render System - Brick Veneer (Timber Framing)



OPENING FLASHING Window Head - Aluminium

Detail 5
Scale 1:2

Masonry Render System - Brick Veneer (Timber Framing)



OPENING FLASHINGS Window Jamb

Detail 6 Scale 1:2

Masonry Render System - Brick Veneer (Timber Framing)

MASONS Barricade
PLUS window tape

55mm WANZ
Support bar

Aluminium window frame (refer
manufacturer for method of
fixing & support)

Bostic Safe Seal Flexible
Sealant. Continuous. With
20mm PE Backing Rod.

Galv. Metal or polythene
flashing with drip edge,
extend 200mm each side of
window.

Caution: Do Not seal
over drainage holes

Cavity 40mm - 75mm.
Recommended 50mm.

MASONS Plastabrick
Render & Coating
System

Note: The
jamb
flashing's
are to
overlap the
sill flashing

Mortar

MASONS Aluminium
Weep Hole Grille
when required

Vent under openings exceeding
2.4m wide through gaps in
perpends positioned at 1/3 points
along the opening except at
opening ends

Timber Kick-Out
Fillet. 19x19mm Min.

MASONS Brick Tie

MASONS Barricade
Building Wrap

70mm Clay Brick

Packers

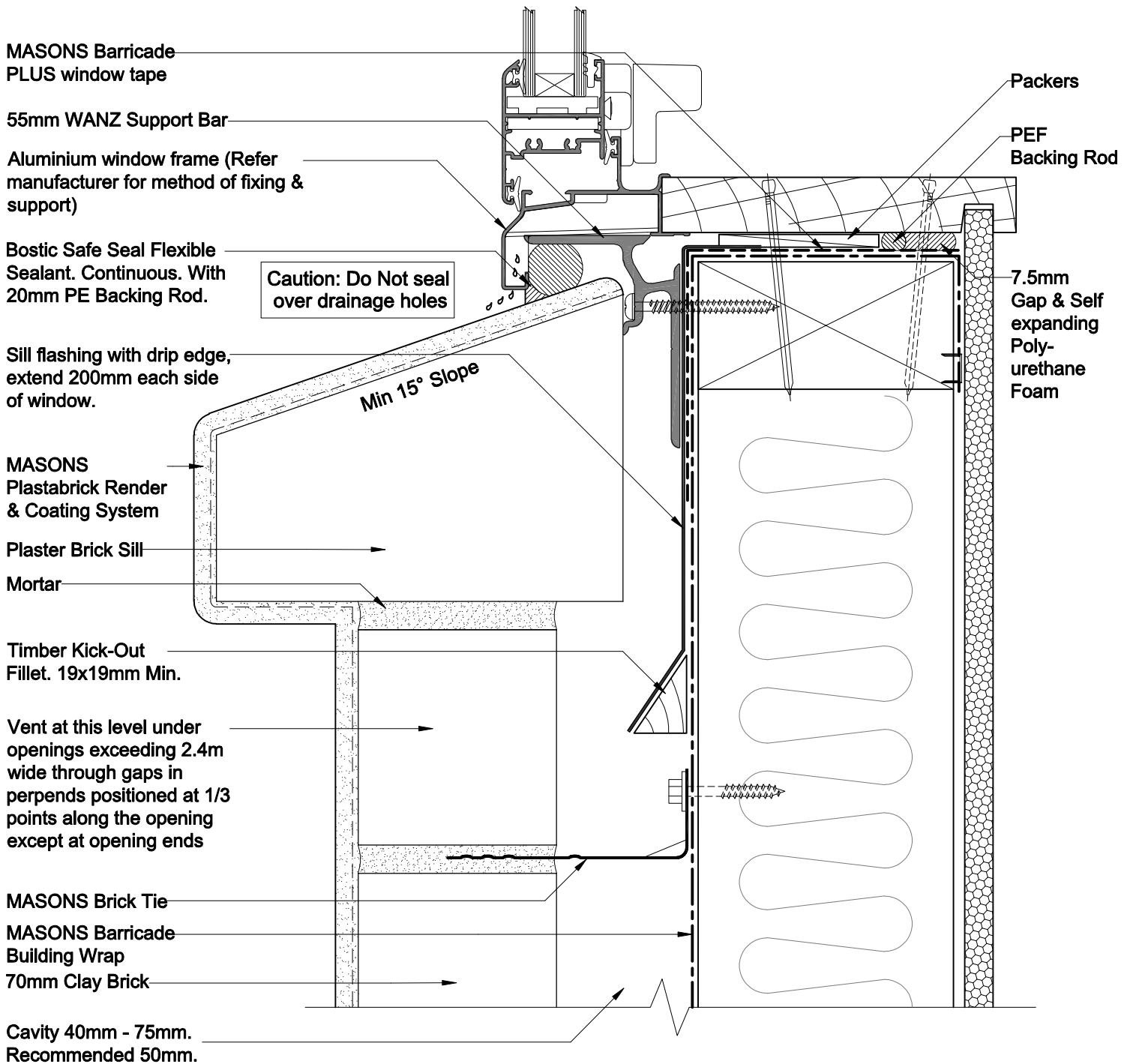
PEF
Backing
Rod

5mm
Min
Gap &
Self
expanding
Poly-
urethane
Foam

OPENING FLASHINGS Window Sill - Aluminium

Detail 7 Scale 1:2

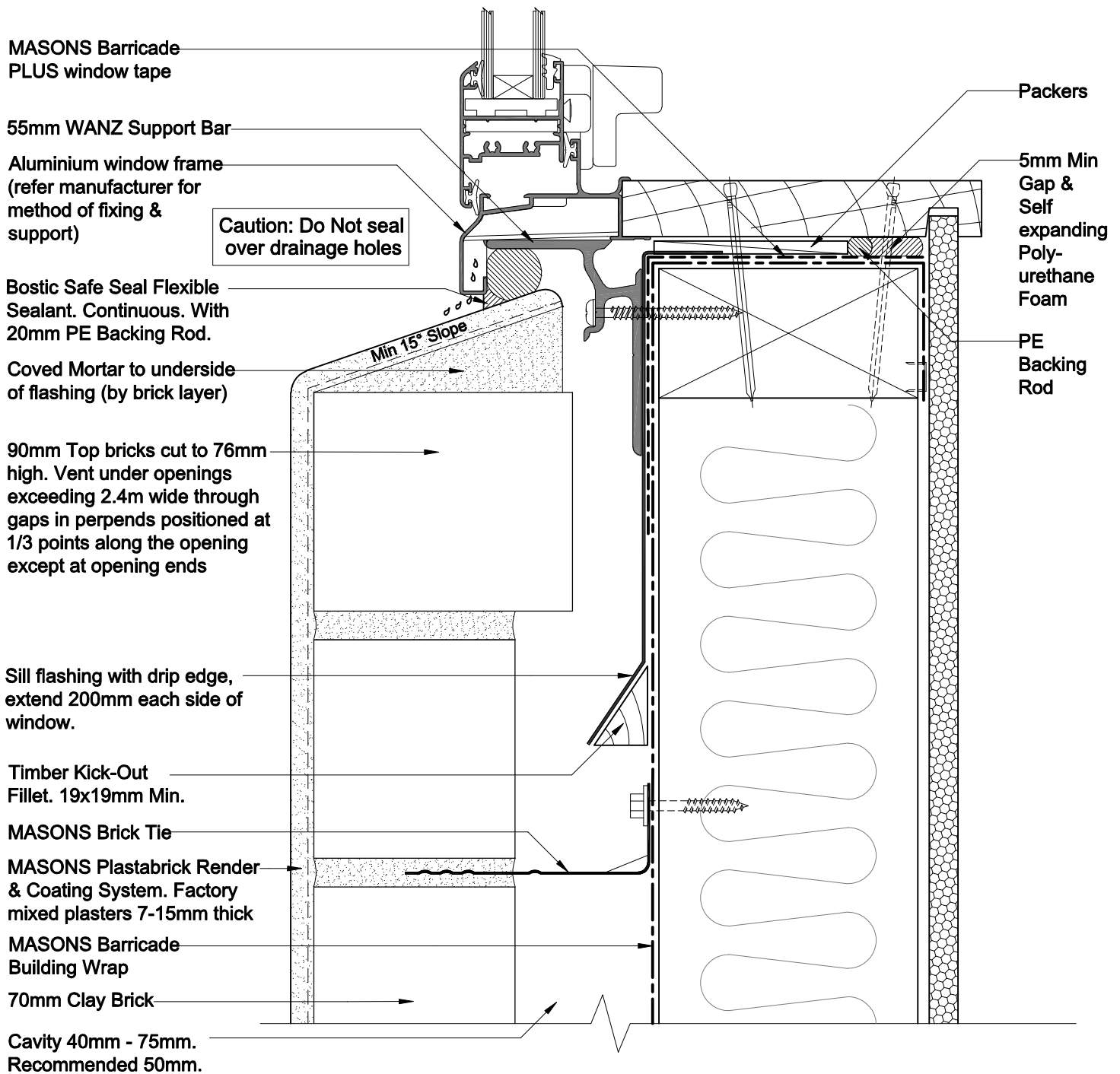
Masonry Render System - Brick Veneer (Timber Framing)



OPENING FLASHINGS Window Sill - Brick

Detail 8 Scale 1:2

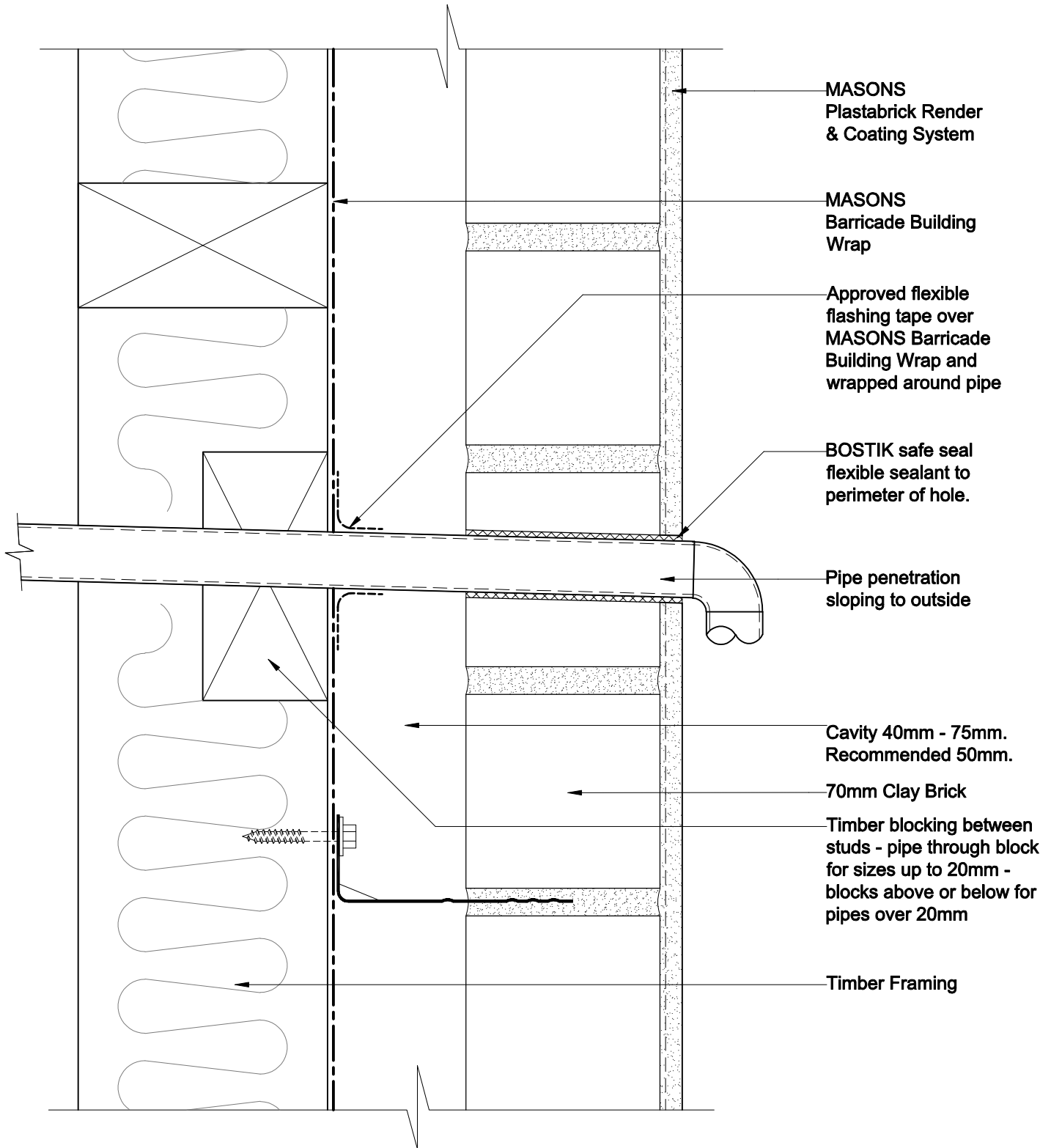
Masonry Render System - Brick Veneer (Timber Framing)



OPENING FLASHINGS Window Sill - Raking

Detail 9 Scale 1:2

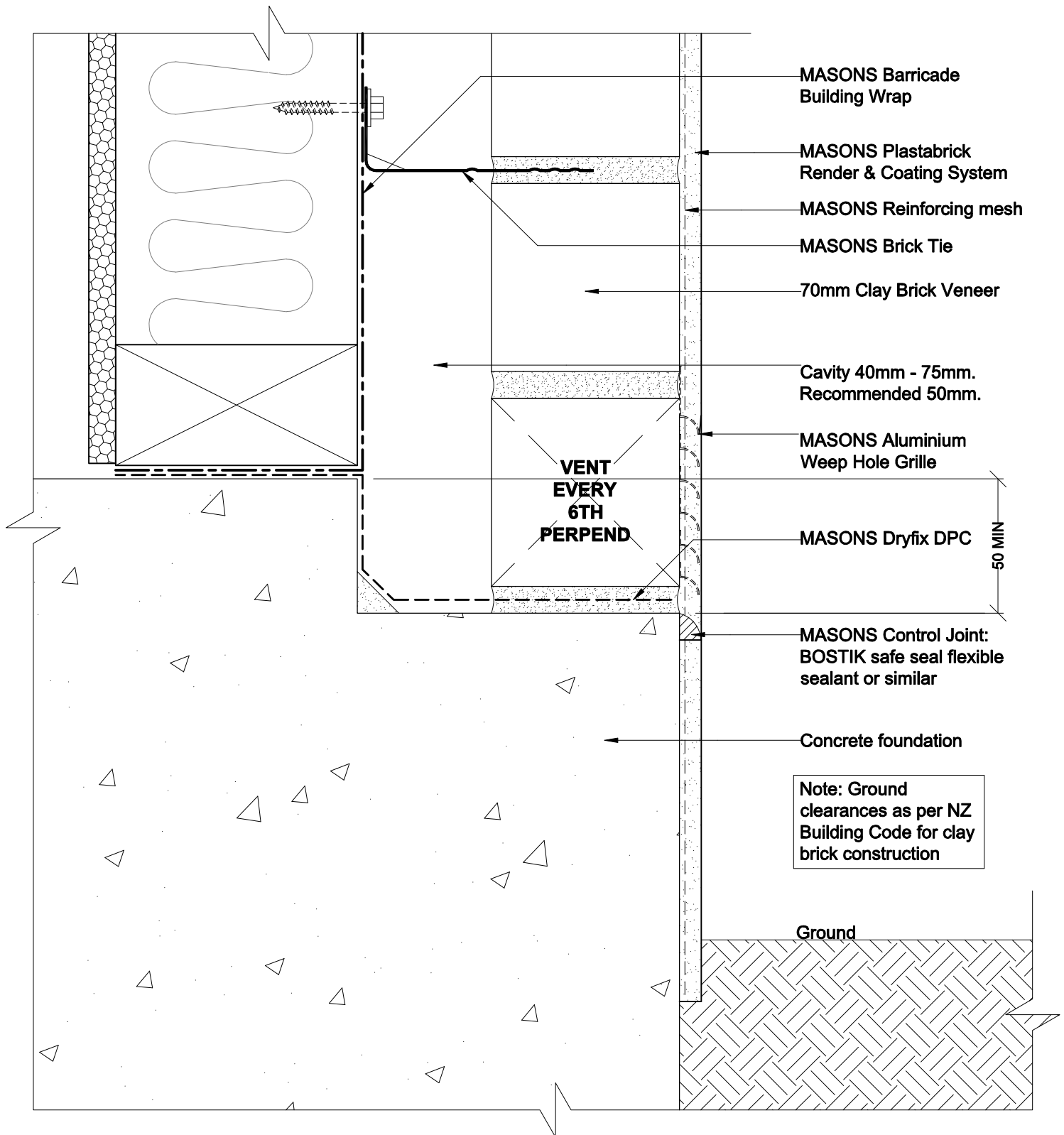
Masonry Render System - Brick Veneer (Timber Framing)



TYPICAL PIPE PENETRATION

Detail 10 Scale 1:2

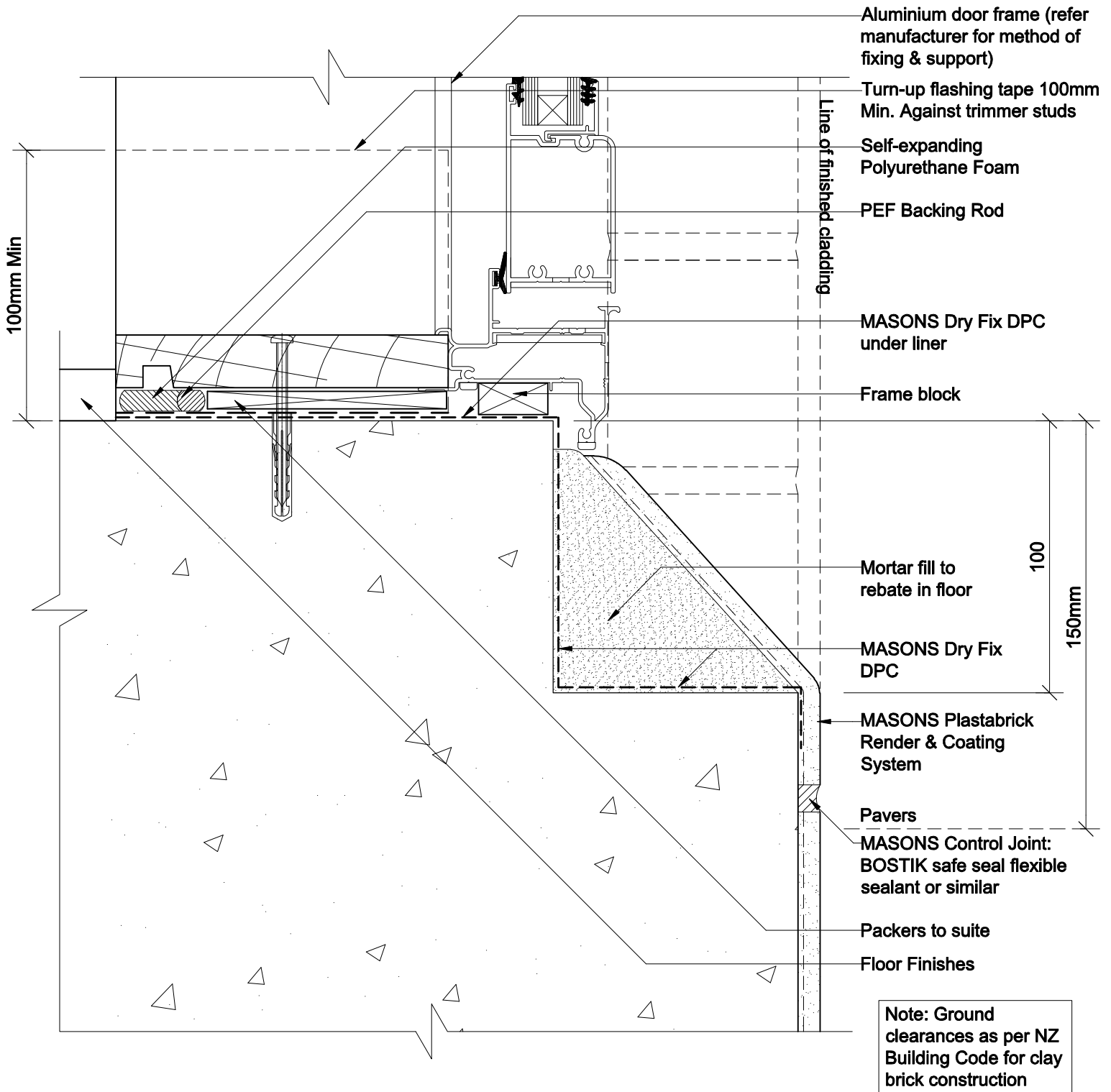
**Masonry Render System - Brick Veneer
(Timber Framing)**



FOUNDATION OPTION

Detail 11 Scale 1:2

**Masonry Render System - Brick Veneer
(Timber Framing)**

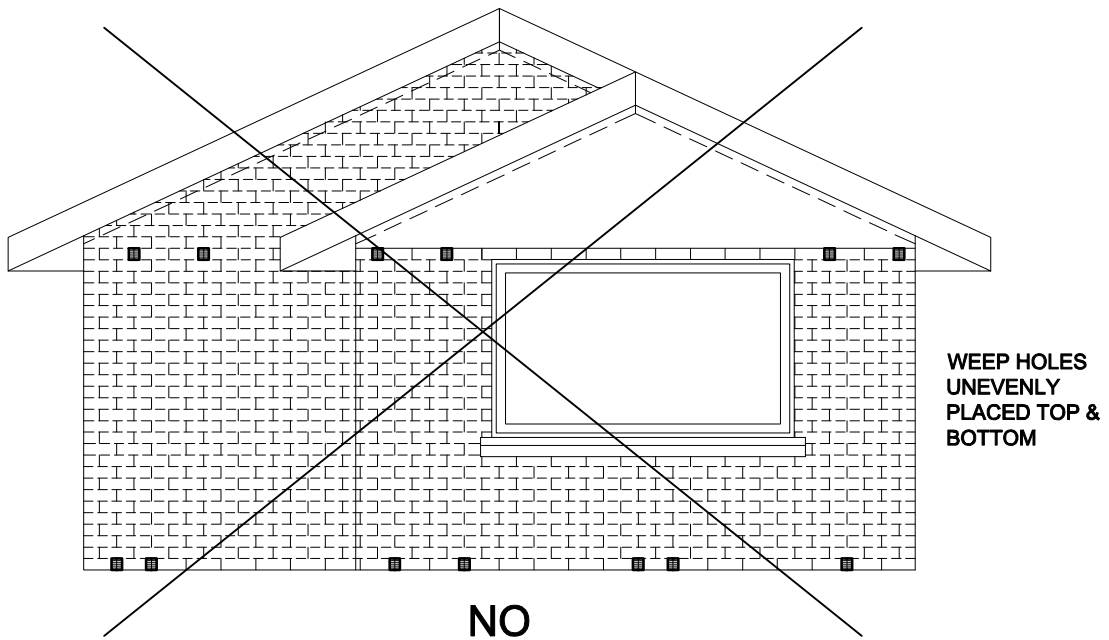
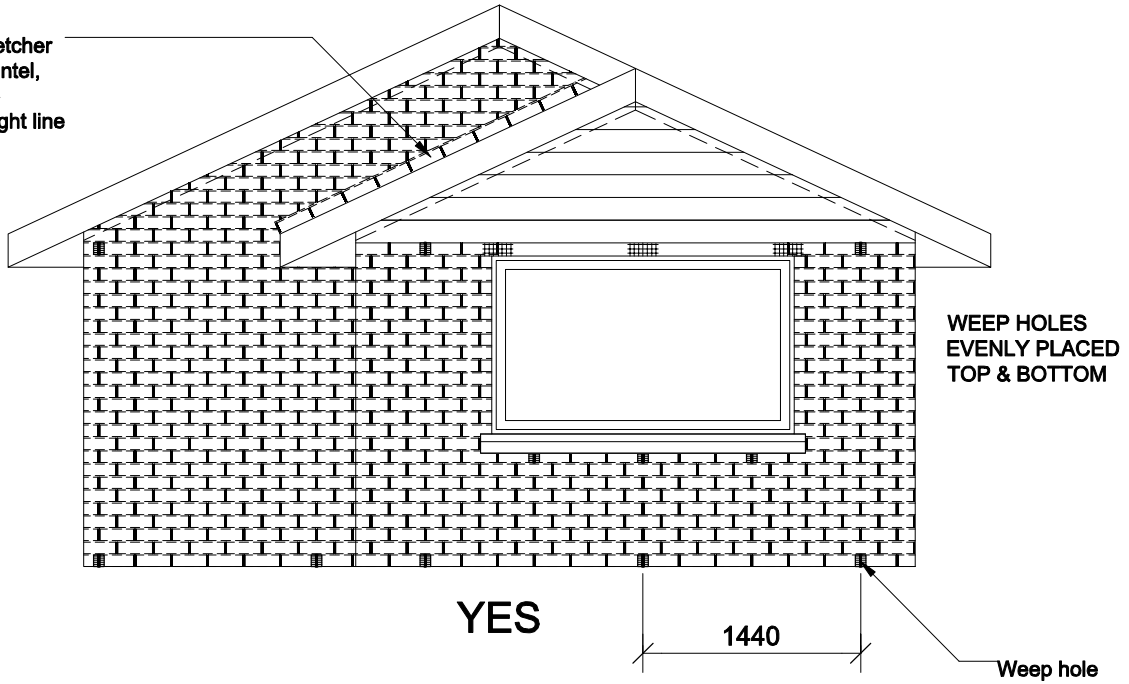


**OPENING FLASHING -
CONCRETE DOOR SILL
With Rebate**

Detail 12 Scale 1:2

**Masonry Render System - Brick Veneer
(Timber Framing)**

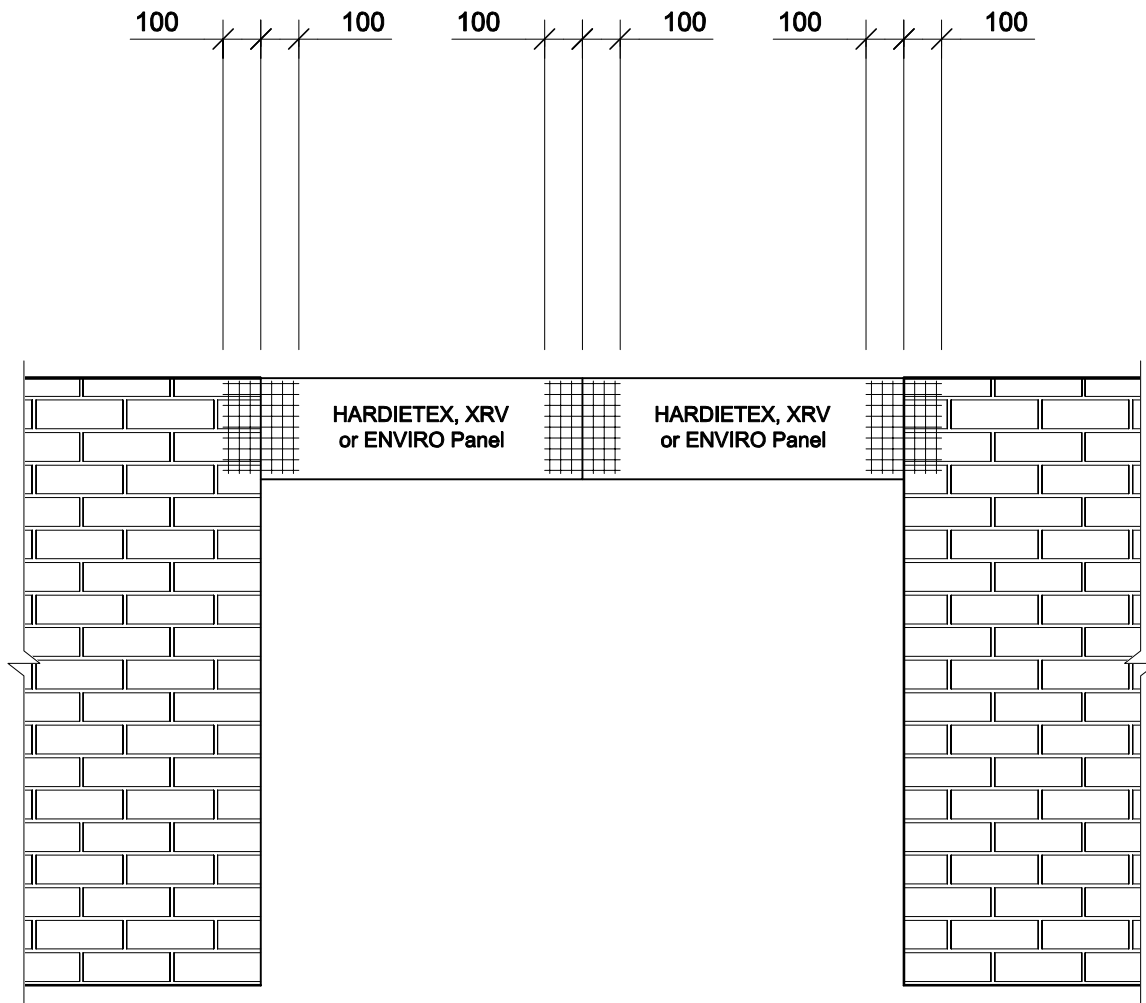
BRICK - Laid stretcher bond over steel lintel, this will help give plasterers a straight line to plaster to.



**WEEP HOLES &
BRICKWORK OVER ROOFTOPS LAYOUT**

Detail 13 NTS

**Masonry Render System - Brick Veneer
(Timber Framing)**



HardieTex Notes:

- ① HardieTex to be packed out over top of window and to be flush with brick veneer.
- ② Seal & mesh joints between HardieTex sheets. HardieTex & brick veneer. Mesh to extend 100mm past joints.
- ③ Apply sealer coat over HardieTex to ensure even adhesion across HardieTex & Joints
- ④ Apply further skim coat over whole area with MASONS PLASTABRICK MESHING RENDER (MR)
- ⑤ Continue plastering using base coat & finishing plaster to effect same texture over window head & wall.

**WINDOW HEAD - HARDIETEX, XRV
or ENVIRO Panel**

Detail 14 Scale: 1:20

**Masonry Render System - Brick Veneer
(Timber Framing)**