

# LOUVRETEC PRODUCT WARRANTY

**BROMIC HEATING**  
**LIGHTING**

**BROMIC**  
HEATING

LIGHT-TEC LIGHTING



## The Louvretec range of products:

All Louvretec branded products are designed and engineered in Australia & New Zealand by Louvretec to comply with relevant AS/NZS standards - refer to full Louvretec Engineering data Design Manual 2025 Section 13.

Louvretec has the most extensive range of outdoor sun shading/ outdoor living products available in Australasia, backed by a comprehensive network of Louvretec Dealers.

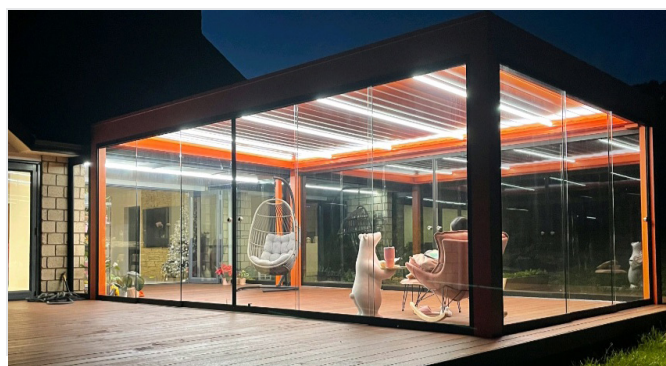


Most Louvretec products sold in Australia are made in Australia\*



Most Louvretec products sold in New Zealand are made in New Zealand\*

\*Some specialised products may only be made in Australia or in NZ and are shipped between each country.



## The Authorised Louvretec Dealer Network:

Your Louvretec product will have been supplied and installed by your local Authorised Louvretec Dealer. All Louvretec Dealerships are privately owned, and the same Louvretec Dealer who supplied your Louvretec will also service your Louvretec.

Your Louvretec product has been "Engineered for Life" and we are committed to ensuring that happens.

## Louvrecare:

Preventative maintenance and valet. Regular scheduled servicing by a Louvrecare team has real benefits. Louvrecare can vary between Dealerships - consult your local Louvretec Dealer.

**Louvrecare**  
PREVENTATIVE MAINTENANCE & VALET

*Engineered for Life*

**LouvreTec**  
OPENING & RETRACT ROOFS / SUN LOUVRES / SHUTTERS




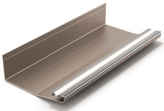


# LOUVRETEC PRODUCT WARRANTY

**BROMIC HEATING**  
**LIGHTING**

**BROMIC**  
HEATING

LIGHT-TEC LIGHTING



PRODUCTS	IDENTIFICATION	WARRANTY
PLATINUM SMART HEAT ELECTRIC		3 YEARS REPLACEMENT
PLATINUM SMART HEAT ELECTRIC MARINE		3 YEAR REPLACEMENT
ECLIPSE SMART HEAT ELECTRIC		3 YEARS REPLACEMENT
PRODUCTS	IDENTIFICATION	WARRANTY
LED PURE FLOW STRIP LIGHTING		2 YEARS REPLACEMENT
LED NEON STRIP LIGHTING		2 YEAR PARTS
UNDERFRAME DOWNLIGHTS		2 YEARS REPLACEMENT

## SERVICE AND LABOUR RESPONSIBILITY

UNDER THIS LIMITED WARRANTY, THE WARRANTOR WILL PROVIDE ONLY A REPLACEMENT HEATER OR LIGHTING OR PART THEREOF. THE OWNER IS RESPONSIBLE FOR ALL OTHER COSTS.

SUCH COSTS MAY INCLUDE, BUT ARE NOT LIMITED TO:

- LABOUR CHARGES FOR SERVICE, REMOVAL, OR RE-INSTALLATION OF THE HEATER OR LIGHTING OR PART THEREOF.
- SHIPPING AND DELIVERY CHARGES FOR FORWARDING THE NEW HEATER, LIGHTING OR REPLACEMENT PART FROM THE NEAREST DISTRIBUTOR AND RETURNING THE CLAIMED DEFECTIVE HEATER, LIGHTING OR PART TO SUCH DISTRIBUTOR.
- ALL COST NECESSARY OR INCIDENTAL FOR HANDLING AND ADMINISTRATIVE CHARGES AND FOR ANY MATERIALS AND/OR PERMITS REQUIRED FOR INSTALLATION OF THE REPLACEMENT HEATER OR LIGHTING OR PART.

## WARRANTY SPECIFIC INFO:

Warranty effective from \_\_\_\_/\_\_\_\_/\_\_\_\_

Louvretec Representative \_\_\_\_\_

Site Address \_\_\_\_\_

Product Description \_\_\_\_\_