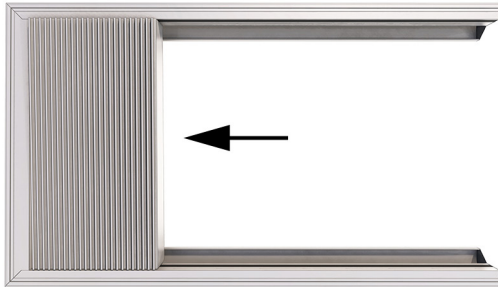


## RETRACT ROOFS CONFIGURATION OPTIONS

### RETRACT ROOFS CONFIGURATION OPTIONS AT A GLANCE

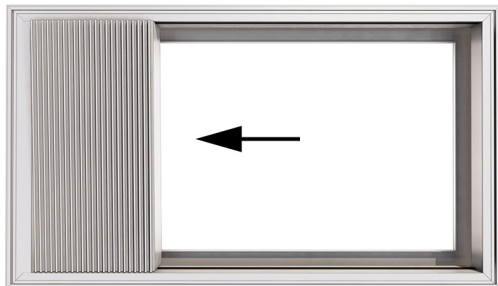
---



#### OPTION 1

##### THREE SIDED FRAME - BLADES STACK TO REAR

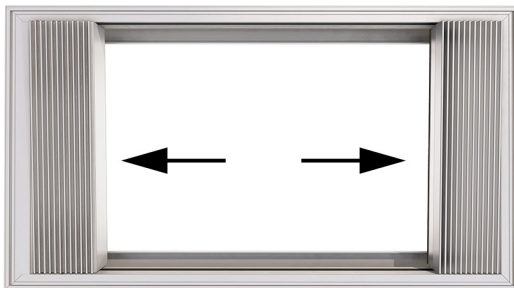
- No front beam, blades stack to rear
- Can be even or uneven number of blades



#### OPTION 2

##### FOUR SIDED FRAME - BLADES STACK TO ONE END

- Blades can stack to either one end
- Can be even or uneven number of blades



#### OPTION 3

##### FOUR SIDED FRAME - BLADES STACK AT EACH END

- Blades split stack from centre to each end
- Must be even number of blades

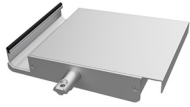


#### OPTION 4

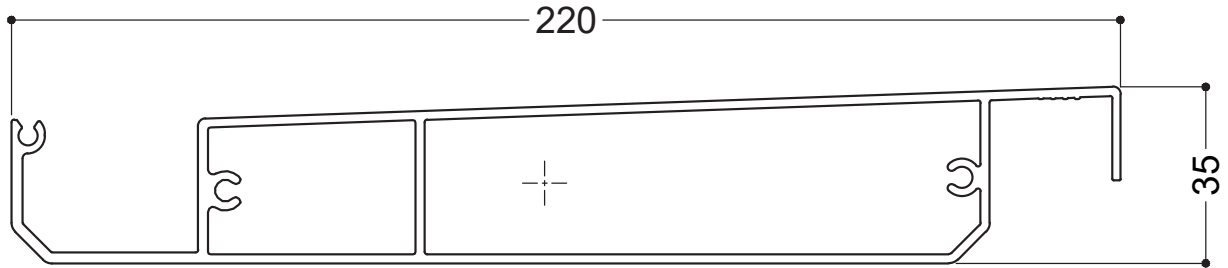
##### FOUR SIDED FRAME - DOUBLE RETRACT WITH MID-BEAM

- Two Retracts meeting at mid-beam
- No mid-beam gutter required, blades close onto mid-beam flashing
- Blades stack from centre to each end
- Can be even or uneven number of blades
- Maximum length: up to 13,734mm

RETRACT ROOFS 220/35 SLIMLINE RETRACT SPANS



BLADE SPECIFICATIONS 220/35 SLIMLINE RETRACT



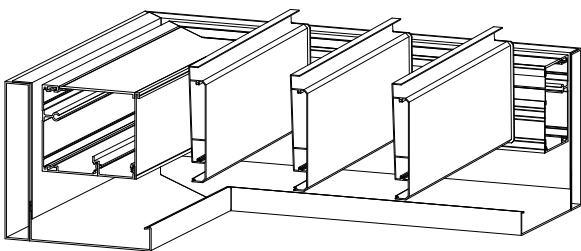
NTS

BLADE SPECIFICATIONS			
Blade cover - opening system	205 mm	Weight per linear metre - opening system	2.655 kg/lm
Weight per square metre - opening system	12.9 kg/sqm	Actual blade width	217 mm
Blade centres - opening system	205 mm		

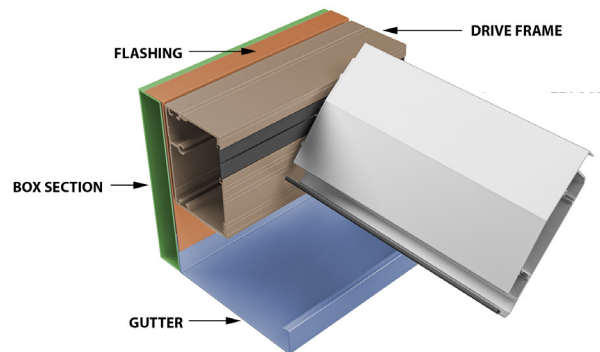
SPANS AT A GLANCE NB: Refer Engineering Section.

WIND ZONE	INSIDE	LOW	MEDIUM	HIGH	VERY HIGH	EXTRA HIGH
Factored wind speed at building	Self wt	32 m/s 115 km/hr	37m/s 133 km/hr	44 m/s 158 km/hr	50 m/s 179 km/hr	55 m/s 198 km/hr
Ultimate limit state loads (kPa)		+1.1 & -1.38	+1.48 & -1.85	+2.09 & -2.61	+2.70 & -3.38	+3.27 & -4.08
220/35 Slimline Retract Roof	5600	4500	4000	3400	3000	2800

FRAME SPECIFICATIONS



RETRACT FRAME AND GUTTER SYSTEM SHOWING FIXING TO SEPARATE 300X50 ALUMINIUM BOX SECTION FRAME

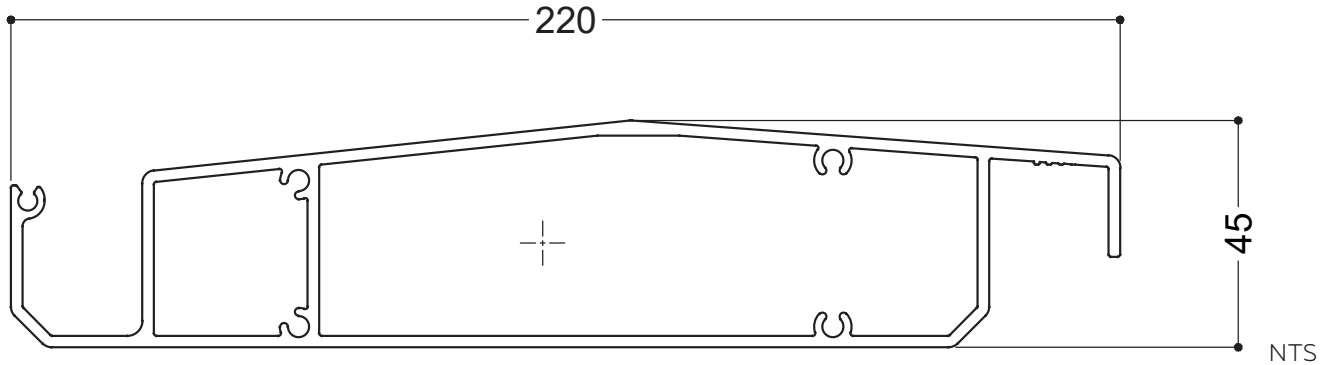


RETRACT CROSS SECTION SHOWING DRIVE FRAME BLADE, GUTTER AND FLASHING WITHIN A 300 X 50 BOX SECTION FRAME

TO CALCULATE EXACT OPENING SIZES FOR RETRACT SYSTEM  
REFER TO PAGES 3.21 - 3.34 (DEPENDING ON FRAME CHOICE)  
IN THIS SECTION



BLADE SPECIFICATIONS 220/45 SUPER RETRACT

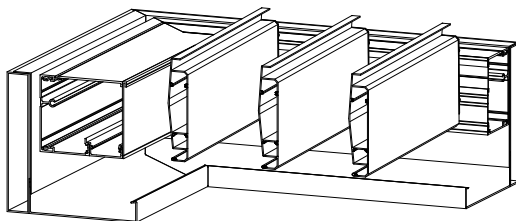


BLADE SPECIFICATIONS			
Blade cover - opening system	205 mm	Weight per linear metre - opening system	3.486 kg/lm
Weight per square metre - opening system	15.2 kg/sqm	Actual blade width	220 mm
Blade centres - opening system	205 mm		

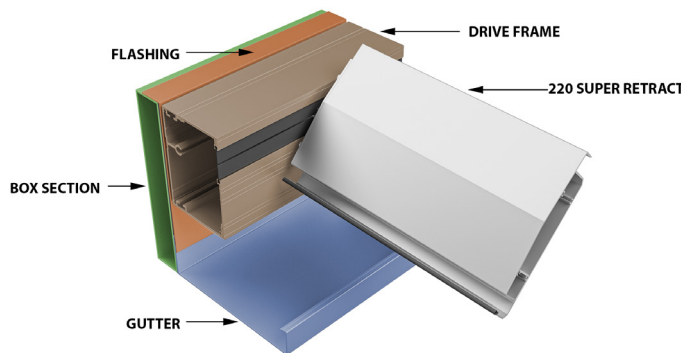
SPANS AT A GLANCE NB: Refer Engineering Section.

WIND ZONE	INSIDE	LOW	MEDIUM	HIGH	VERY HIGH	EXTRA HIGH
Factored wind speed at building	Self wt	32 m/s 115 km/hr	37m/s 133 km/hr	44 m/s 158 km/hr	50 m/s 179 km/hr	55 m/s 198 km/hr
Ultimate limit state loads (kPa)		+0.92 & -1.15	+1.23 & -1.53	+1.74 & -2.17	+2.24 & -2.80	+2.71 & -3.39
220/45 Super Retractable Roof	5000	4500	4500	4500	4300	3900

FRAME SPECIFICATIONS



RETRACT FRAME AND GUTTER SYSTEM SHOWN FIXING TO SEPARATE 300X50 ALUMINIUM BOX SECTION FRAME.



220/45 SUPER RETRACT CROSS SECTION SHOWING DRIVE FRAME BLADE, GUTTER AND FLASHING WITHIN A 300 X 50 BOX SECTION FRAME

TO CALCULATE EXACT OPENING SIZES FOR RETRACT SYSTEM REFER TO PAGES 3.24 - 3.35 (DEPENDING ON FRAME CHOICE) IN THIS SECTION