

LOUVRETEC IS AVAILABLE WORLDWIDE

**PRODUCT GUIDE**  
OUTDOOR BLINDS



FEATURES AND OPTIONS – LOUVRETEC OUTDOOR BLINDS



OUTDOOR BLIND

Has a locking option and a weighted bottom rail.



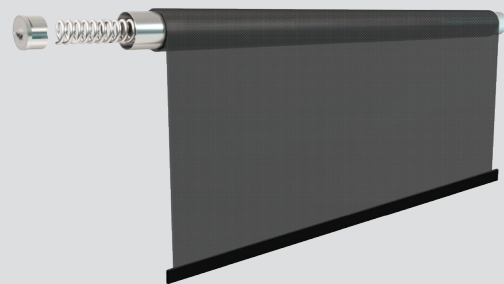
MANUAL CRANK

The geared crank ensures easy operation that is not dependent on your strength.



OPEN HEADBOX

Increased air circulation around the roller minimising heat build up for PVC skins.



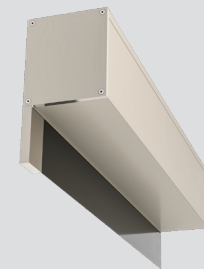
SPRING OPERATION

Allows you to manually adjust the height of the awning and secure using either the sliding bolt system or hold down clip option.



REMOTE CONTROLLED

Can be automatic using our Somfy remote or wall mounted option.



CLOSED HEADBOX

Keeps the fabric clean from rain, UV and dirt enhancing longevity.

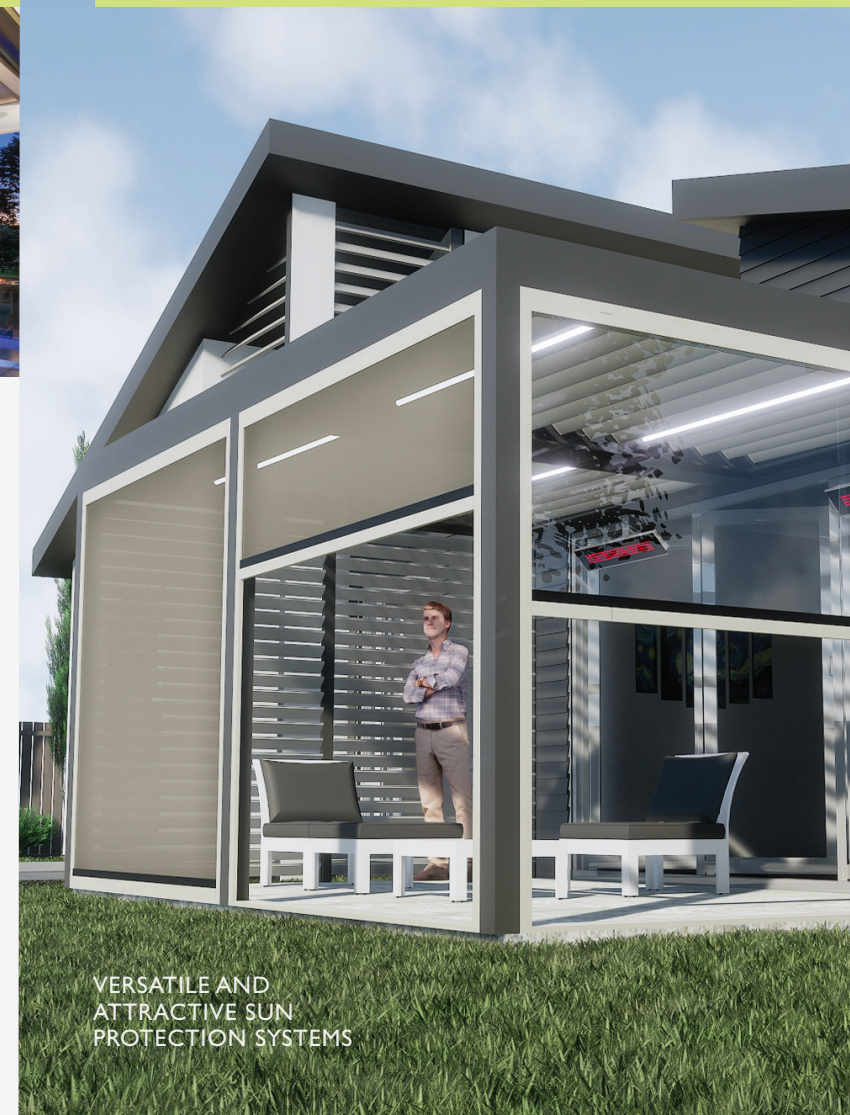


NEW ZEALAND  
PHONE 0800 LOUVRES  
EMAIL [info@louvretec.co.nz](mailto:info@louvretec.co.nz)  
VISIT [www.louvretec.co.nz](http://www.louvretec.co.nz)

AUSTRALIA  
PHONE 1 300 MY LOUVRES  
EMAIL [info@louvretec.com.au](mailto:info@louvretec.com.au)  
VISIT [www.louvretec.com.au](http://www.louvretec.com.au)

YOUR LOCAL DEALER:

VIEW OUR OTHER PRODUCT RANGE GUIDES & / OR TECHNICAL MANUAL.  
FOR MORE INFO SEE [www.louvretec.co.nz](http://www.louvretec.co.nz)



VERSATILE AND  
ATTRACTIVE SUN  
PROTECTION SYSTEMS

## LOUVRETEC OUTDOOR BLINDS OVERVIEW

### Retractable mesh and PVC outdoor blinds

Louvretec Outdoor Blinds are an ideal wall infill option. They offer privacy and protection from sun, wind, rain and insects all year round, disappearing into a stylish head box when fully retracted.

Mesh or clear PVC? There is the choice – both offering different features and benefits.



## LOUVRETEC CLEAR PVC OUTDOOR BLINDS

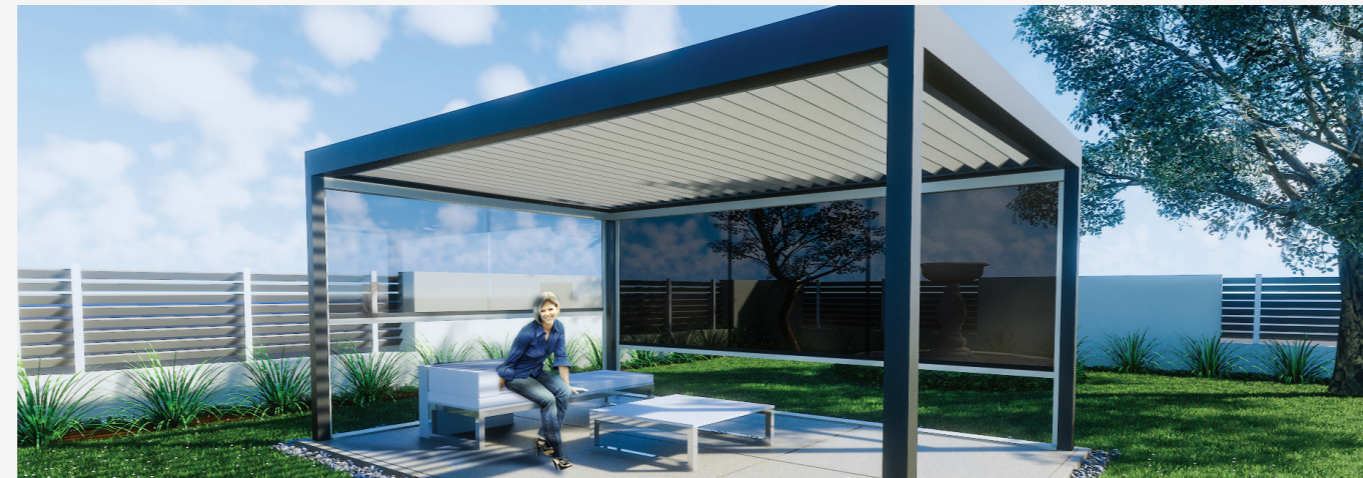
### External screening options

When PVC is required, Clear PVC is fitted in most instances.

PVC is also available with a range of solid non-see through colours. All Louvretec Outdoor Blinds carry a one year workmanship and product warranty, excluding the skins. Due to the unstable nature of PVC, there is no manufacturer's warranty available for the PVC skin itself. Contact your Louvretec Dealer for warranty details and further information and options with PVC.

A full range of powdercoat colours are available for frames and headbox.

Headboxes are optional – they are not supplied with PVC blinds due to the potential when retracted on hot days, for the PVC to heat up causing bunching and wrinkling around the axle.



## LOUVRETEC MESH OUTDOOR BLINDS

### External screening options

There is a wide range of mesh fabrics and colours available. Mesh fabrics vary with the percentage of openness and are best selected according to desired levels of privacy and wind protection.

All Louvretec Outdoor Blinds carry a one year workmanship and product warranty, excluding the skins. Mesh blind skins are in most instances covered by a 5 year manufacturer's warranty.

Contact your Louvretec Dealer for warranty details and colour range. A full range of powdercoat colours is available for frames and headbox. Head boxes or pelmets are an optional choice with mesh blinds.

There are many choices of outdoor blinds fabric on the market. When choosing your fabric, it is wise to keep the following in mind:

### AIR FLOW

Clear PVC is great for unrestricted view and when air flow is not required. If you are considering enclosing your outdoor area, think about whether you still want to have a breeze coming through or not. If a breeze is required, ensure you select an open weave fabric.

### PRIVACY AND VIEW THROUGH

You have the choice of either open or closed weave fabric options. Consider if you want day or night time privacy. A darker colour fabric can give clear view through in the day, but also allows others to see in at night.

### COLOUR FASTNESS

Ensure the fabric you choose has excellent fade resistance to the sun. Any fabric showing a resistance of 6 and above will remain the colour you selected for a long time.

