



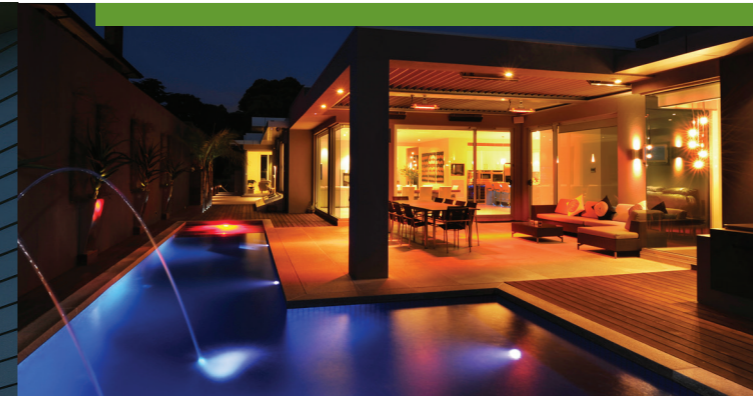
- 1 STRIP LIGHTS IN BLADE
- 2 STRIP LIGHTS UNDER FRAME
- 3 GUTTER LIGHTS
- 4 DROP LIGHTS IN CONDUIT



Complement and enhance your Opening Roof or Louvretec Outdoor Room with Louvretec's new range of custom designed, 24v lighting options.

Easy to use, simple and economic to operate, reliable and hassle free – innovative lighting options to suit any mood or occasion.

There are four distinctive options – using Louvretec custom designed extrusions and diffusers in conjunction with world leading Italian Teleco Inlumina lights and controllers.



NEW ZEALAND
PHONE 0800 LOUVRES
EMAIL info@louvretec.co.nz
VISIT www.louvretec.co.nz

AUSTRALIA
PHONE 1300 MY LOUVRES
EMAIL info@louvretec.com.au
VISIT www.louvretec.com.au

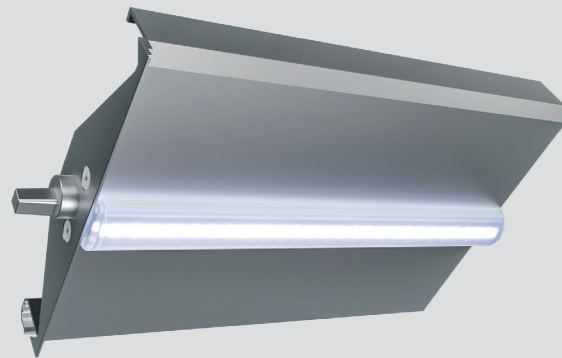
YOUR LOCAL DEALER:

VIEW OUR OTHER PRODUCT RANGE GUIDES & / OR TECHNICAL MANUAL
FOR MORE INFO SEE www.louvretec.co.nz

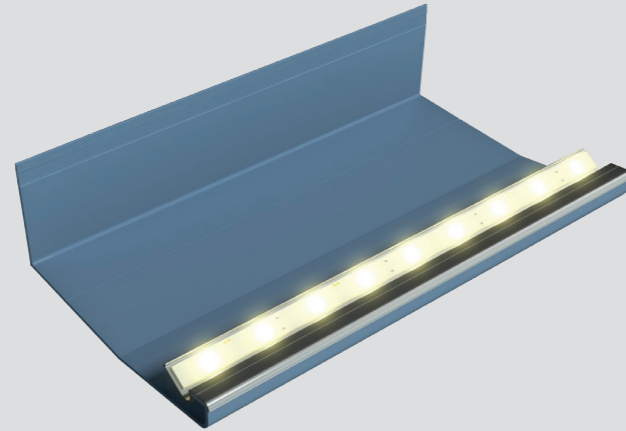


USEABLE OUTDOOR SPACES:
DAY OR NIGHT LOUVRETEC
24V LIGHTING SYSTEMS

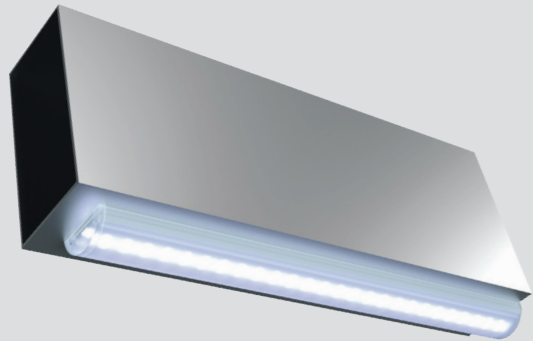
LOUVRETEC BLADE STRIP LIGHTING



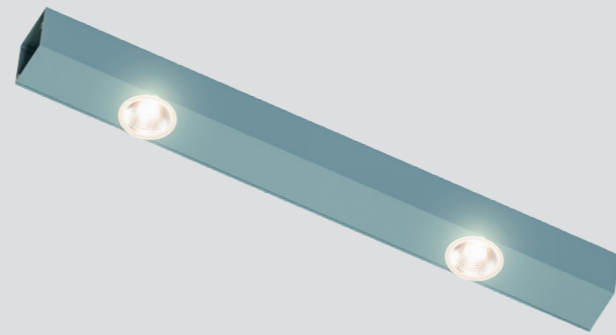
LOUVRETEC GUTTER LIGHTING



LOUVRETEC FRAME STRIP LIGHTING



LOUVRETEC DOWNLIGHTS



LOUVRETEC BLADE STRIP LIGHTING

Fixed to the underside of the louvre blade in either cool or warm white. Provides lighting across the full width of the installation, with great lighting effect when the blades are operated. Two strips are standard, the cool white option provides lighting sufficiently bright enough for reading.

LOUVRETEC FRAME STRIP LIGHTING

Using the same strip lighting as above, this option provides lighting to the outer perimeters of the Opening Roof or outside Room. Available in cool white or warm white – it may be fixed to any flat surface wider than 35mm.

LOUVRETEC GUTTER LIGHTING

This is a reflective or mood lighting option fixing to an internal face of the gutter system, shining a light onto the underside outer edge of the Opening Roof. Options are cool white or the full RGB colour range. Both options can be dimmed, and the RGB option can be set to a selected colour or can be continuously cycled between colours. Great for outdoor party night.

LOUVRETEC DOWNLIGHTS

These powerful 4.5W Regulus downlights fit within a custom 50mm x 50mm aluminium conduit, that fits precisely underneath the aluminium structural frame. No holes are drilled in the frame, with easy access through the removable side of the conduit. Choose as many or as few lights located exactly where you wish – Teleco's plug and play wiring connections make for easy installation.



Where ever possible specify RTS motors.

As the lights power supply utilises the same wiring feed that operates the Opening Roof system, no additional 240V wiring requirements are needed when RTS motors are used.

Lighting is controlled by a wireless single or six channel remote controller/dimmer supplied standard with the 24v lighting package.