

TECHNICAL DETAILS 70MM KISS PIVOT MINI LOUVRE

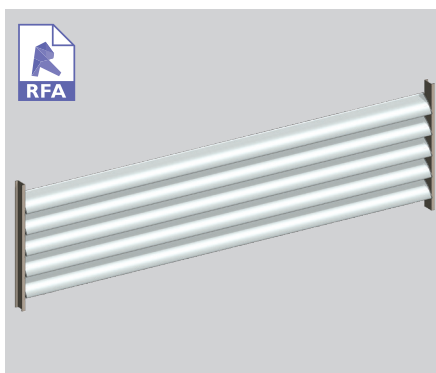
70MM KISS PIVOT MINI LOUVRE

the smallest

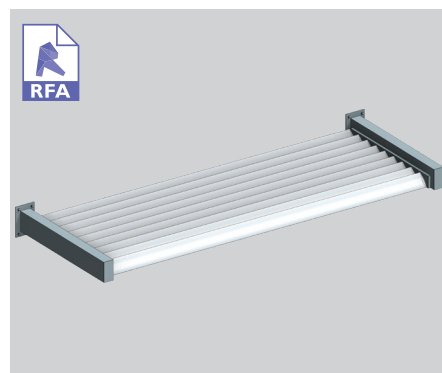
The 70mm Mini Louvre is one of three 'wave' shaped louvres. This shape is replicated in our 70mm, 90mm Midi & 150mm Midi Louvres. This blade can be hand operated using the KISS Pivot system. The blades can be locked closed or in a number of opening positions. A woolpile closing insert ensures a snug fit when closed. The 70mm louvre is well suited fixed within an opening or within sliding, bi-folding or hinged doors. Also available end and bracket fixed.



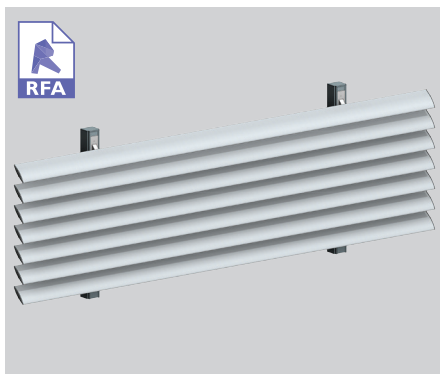
70MM KISS PIVOT



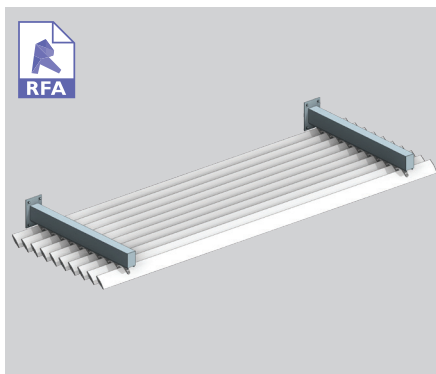
70MM END FIXED VERTICAL



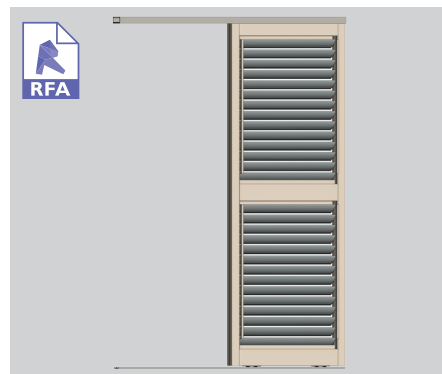
70MM END FIXED OVERHEAD



70MM BRACKET FIXED VERTICAL



70MM BRACKET FIXED OVERHEAD



70MM KISS PIVOT SLIDING DOOR

SURFACE COATINGS

A wide range of options are available.



ANODISED



WOOD FINISH



POWDERCOATED

OPERATING THIS SUN LOUVRE - THE CHOICE IS YOURS

Fixed options

Operable systems

