

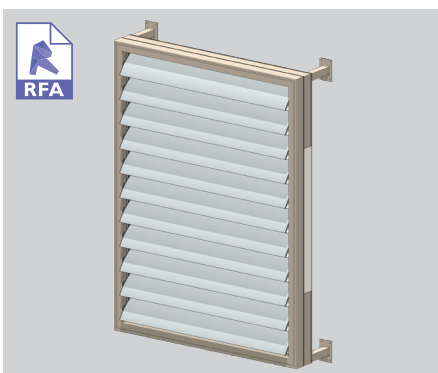
# 180MM AIRFOIL LOUVRE

solution for wider openings

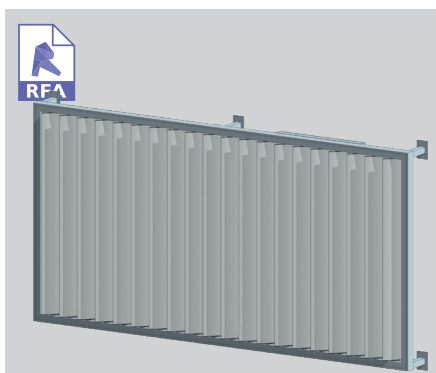
This blade is a scaled up version of the 120mm Airfoil. The 180mm Airfoil features the same clean aerodynamic lines as the 120mm Airfoil with the added value of increased spans for wider openings.

Available as either motorised or hand operable Spiral Pivot, the 180mm Airfoil is well suited to a wide range of external sun louvre applications.

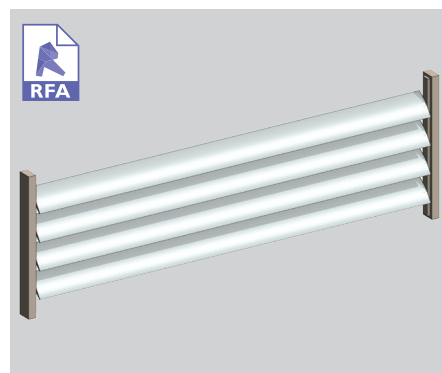
Also available as end fixed or bracket fixed horizontal or overhead panels.



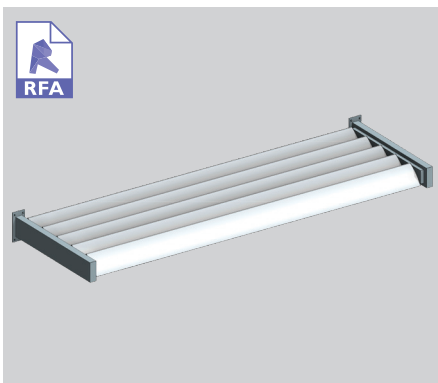
SUPER ELAM STREET STRUCTURAL FRAME WITH SUB-FRAME



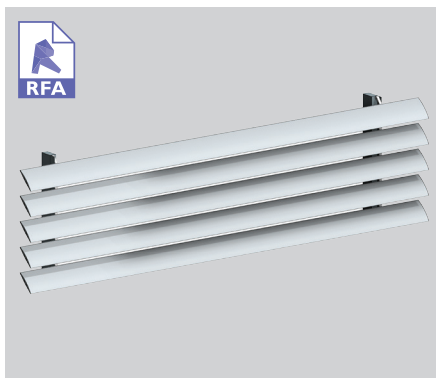
ELAM STREET STRUCTURAL FRAME - VERTICAL LOUVRES



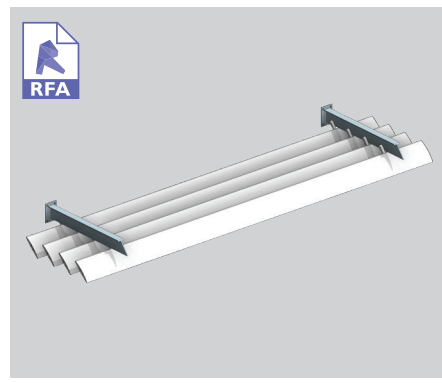
END FIXED - VERTICAL PANEL



END FIXED - OVERHEAD PANEL



BRACKET FIXED - VERTICAL PANEL



BRACKET FIXED - OVERHEAD PANEL

### SURFACE COATINGS

A wide range of options are available.



ANODISED



WOOD FINISH



POWDERCOATED

### OPERATING THIS SUN LOUVRE SYSTEM - THE CHOICE IS YOURS

Fixed options

Operable systems



LOUVRETEC GEARBOX



MOTORS AND SENSORS