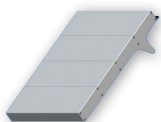
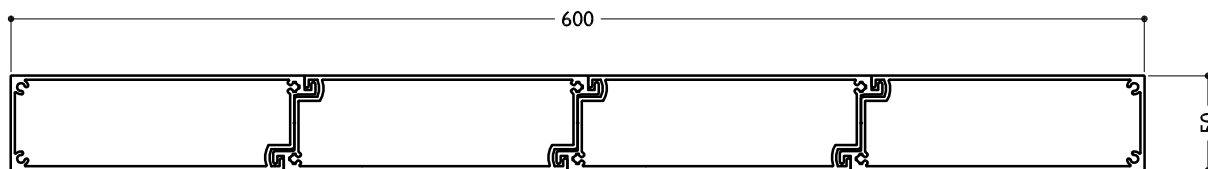


SUN LOUVRES - RECTANGULAR SPECIFICATIONS



TECHNICAL DETAILS RL 600 SQUARE LOUVRE



scale 1:4

BLADE SPECIFICATIONS			
Blade cover - opening system	607 mm	Weight per lineal metre	11.10 kgm
Weight per square metre - opening system	19.0 sqm	Actual blade width	600 mm
Blade Centres - opening system	607 mm		

SPANS AT A GLANCE NB Refer Engineering Section. Climate, terrain, shielding, location, type of structure contribute to determine spans.

WIND ZONE	INSIDE	LOW	MEDIUM	HIGH	VERY HIGH	EXTRA HIGH
Factored wind speed at building		32m/s 115km/hr	37m/s 133km/hr	44m/s 158km/hr	50m/s 179km/hr	55m/s 198km/hr
Ultimate limit state loads (kPa)		+0.92 & -1.15	+1.23 & -1.53	+1.74 & -2.17	+2.24 & -2.80	+2.71 & -3.39
Adjustable and Fixed Vertical and Horizontal	5800	5800	5800	5150	4500	4050

INSTALLATION OPTIONS



MAXI DRIVE SYSTEM: CALCULATE OPTIMUM FRAME OPENING SIZES

Width: Check engineering limits
Height: Calculation example showing 8 blades

7 blades × 607	4259
1 blade at 600	600
8 blades	=4849



END FIXED

Louvres at any pitch
Louvres at any centre



BRACKET FIXED

Louvres at any pitch
Louvres at any centre