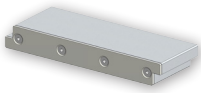
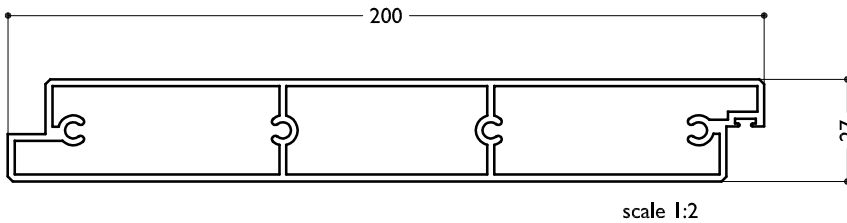


SUN LOUVRES - RECTANGULAR SPECIFICATIONS



TECHNICAL DETAILS 200MM FLUSH PANEL



BLADE SPECIFICATIONS			
Blade cover - opening system	192 mm	Weight per lineal metre	2.67 kg/lm
Weight per square metre - opening system	13.95 kg/sqm	Actual blade width	200 mm
Blade Centres - opening system	192 mm		

SPANS AT A GLANCE NB Refer Engineering Section. Climate, terrain, shielding, location, type of structure contribute to determine spans.

WIND ZONE	INSIDE	LOW	MEDIUM	HIGH	VERY HIGH	EXTRA HIGH
Factored wind speed at building		32m/s 115km/hr	37m/s 133km/hr	44m/s 158km/hr	50m/s 179km/hr	55m/s 198km/hr
Ultimate limit state loads (kPa)		+0.92 & -1.15	+1.23 & -1.53	+1.74 & -2.17	+2.24 & -2.80	+2.71 & -3.39
Adjustable and Fixed Horizontal and Vertical	3500	3350	3000	2650	2450	2250

INSTALLATION OPTIONS



CALCULATE OPTIMUM SIZE & FRAME BOTH SIDES

Width: Check engineering limits
Heigh: Calculation example showing
17 blades

STEP 1

16 blades x 192crs	3072
1 blade at 200mm	200
17 blades	=3272

STEP 2

Blade cover	3272
+ top and bottom closing angles allow for	
5mm + 5mm clearance @ ends 10	
Total exact opening height	=3282



END FIXED

Louvres at any pitch
Louvres at any centre



BRACKET FIXED

Louvres at any pitch
Louvres at any centre