

3M Science.
Applied to Life.™

3M™ Safety-Walk™
Slip-Resistant Tapes & Treads

The Science of Walking Safely





A science dedicated to helping you reduce the risk of slips, trips and falls.

In the tortuous world of slips, trips and falls, 3M™ Safety-Walk™ Slip-Resistant Tapes and Treads stand tall as an effective prevention aid. These mineral and non-mineral coated products of 3M science are offered in many sizes, colors and textures, along with multi-color, printed and luminescent choices. All designed to help you avoid injuries, reduce costs and maintain your good standing.



Fact: Twenty-six percent of nonfatal occupational injuries and illnesses requiring days away from work were the result of slips or falls.


U.S. Bureau of Labor Statistics, 2012

Fact: For every slip-and-fall fatality, 23 people will fall and report a minor injury, and 70 people will fall and go unreported.

National Floor Safety Institute

Fact: In the U.S., there are more than 180,000 slip, trip and fall injuries per year, which cost businesses more than \$13 billion in workers' compensation.

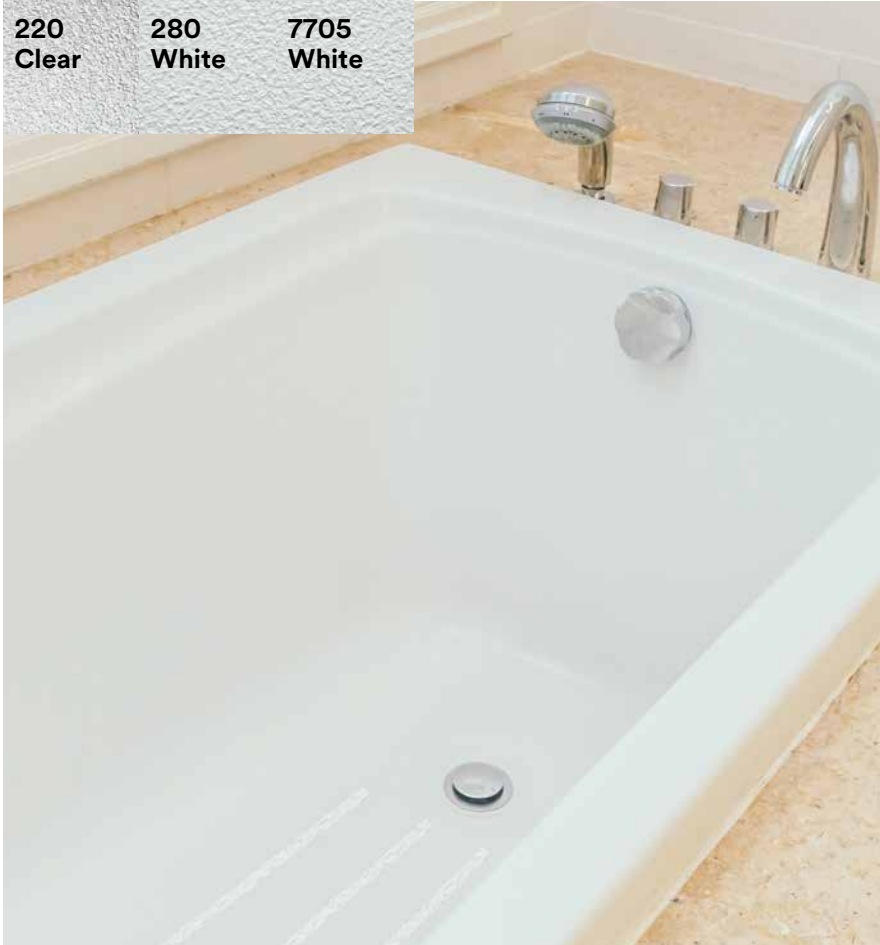
Liberty Mutual Insurance Institute for Safety, Workplace Safety Index

NFSI  3M™ Safety-Walk™ Slip Resistant Tapes and Treads Series 200, 300, 500 and 600 have been certified by the National Floor Safety Institute (NFSI) as providing "high-traction." A wet static coefficient of friction (SCOF) of greater than 0.60 was chosen by NFSI as the criteria for "high traction" because according to NFSI, floor surfaces maintaining this level of slip resistance when wet have proven to reduce slip-and-fall claims by between 50% and 90%.

200 Series.

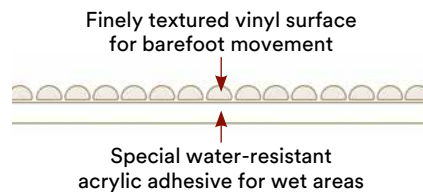
For wet, barefoot traffic areas

220	280	7705
Clear	White	White



3M™ Safety-Walk™ Slip-Resistant Fine Resilient Tapes and Treads

Showers | Tubs | Surfboards |
Around hot tubs and pools



300 Series.

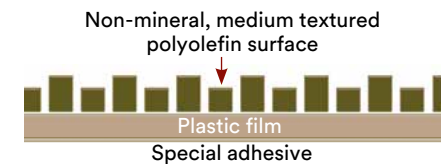
For barefoot and shoe traffic areas

310	370
Black	Gray



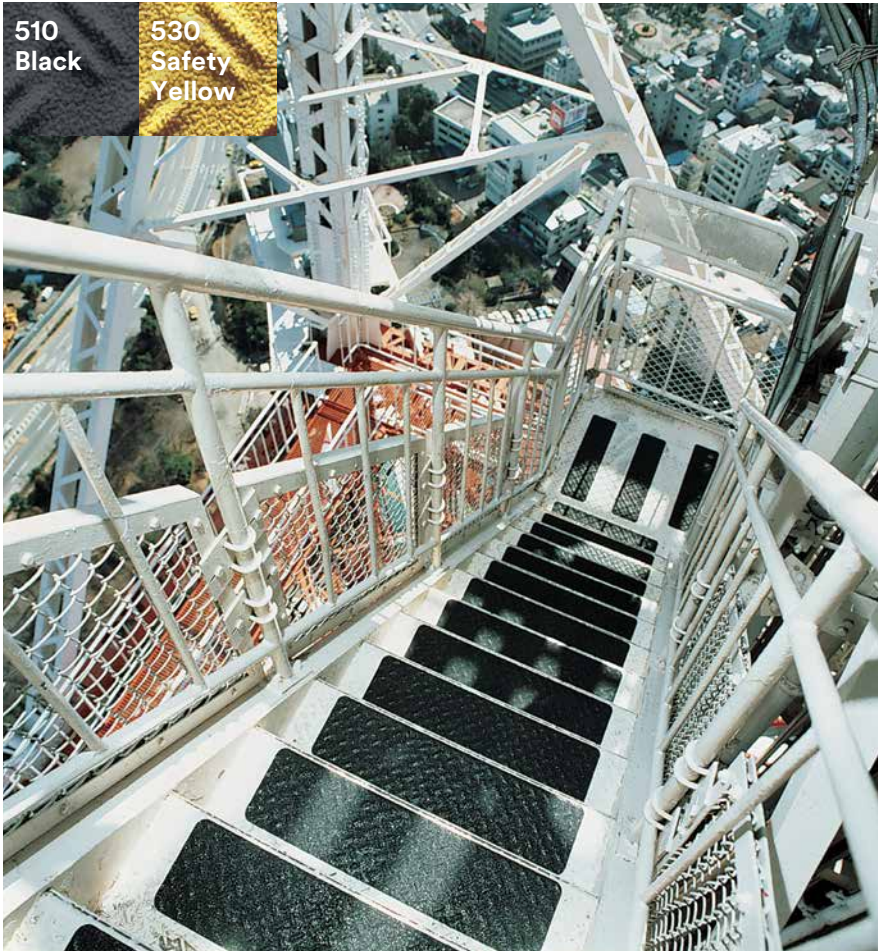
3M™ Safety-Walk™ Slip-Resistant Medium Resilient Tapes and Treads

Locker rooms | Around hot tubs and
pools | Boats | Personal watercraft |
Water skis | Exercise equipment |
Conveyers



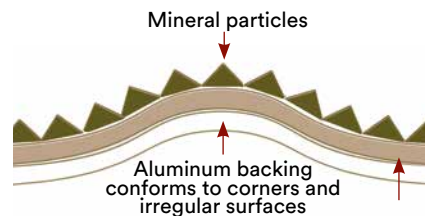
500 Series.

For irregular and contoured surfaces



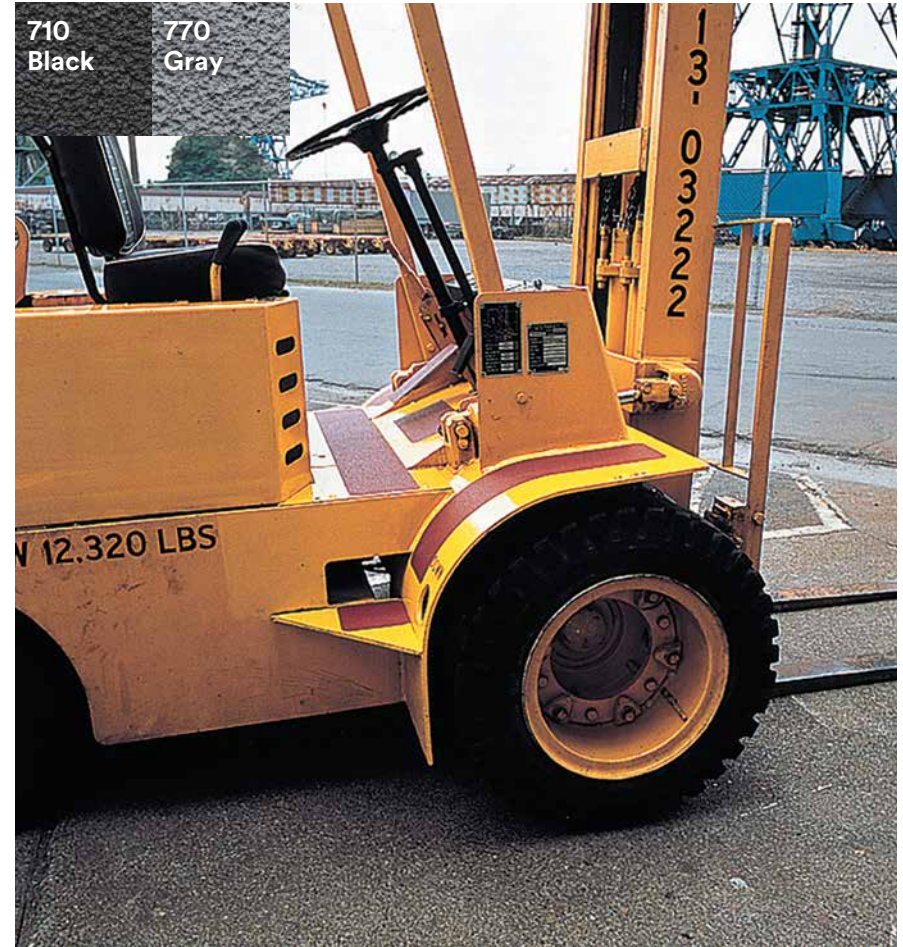
3M™ Safety-Walk™ Slip-Resistant Conformable Tapes and Treads

Stairs | Ladders | Loading ramps | Platforms | Irregular surfaces like diamond plating | Flat surfaces with rivets or screw heads



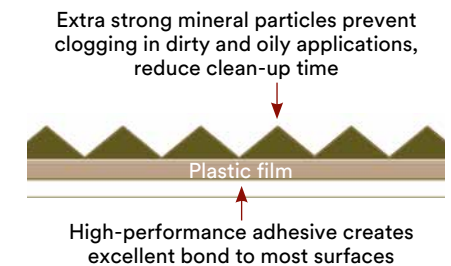
700 Series.

For extreme conditions



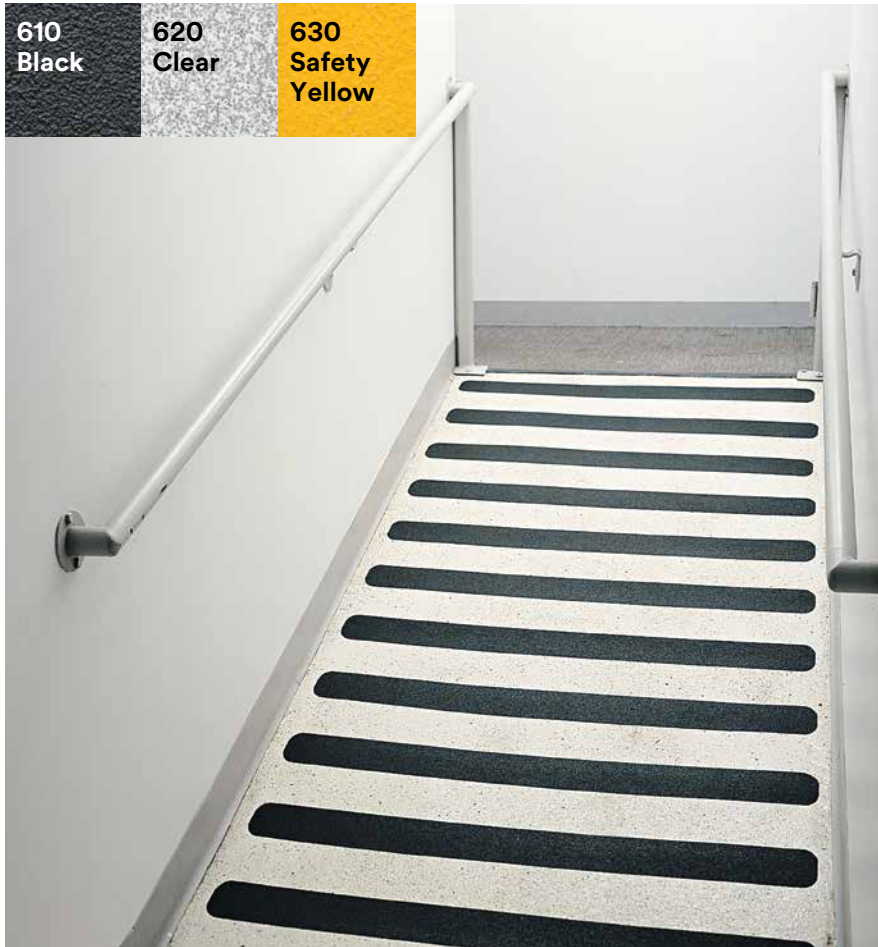
3M™ Safety-Walk™ Slip-Resistant Coarse Tapes and Treads

Construction vehicles | Ship and plane decks | Trains | Semi-trailers | Oily wet areas | Platforms and ramps | Machine shops | Agriculture and forestry equipment | Recreational vehicles



600 Series.

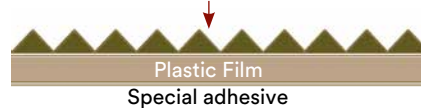
For light to heavy shoe traffic areas



3M™ Safety-Walk™ Slip-Resistant General Purpose Tapes and Treads

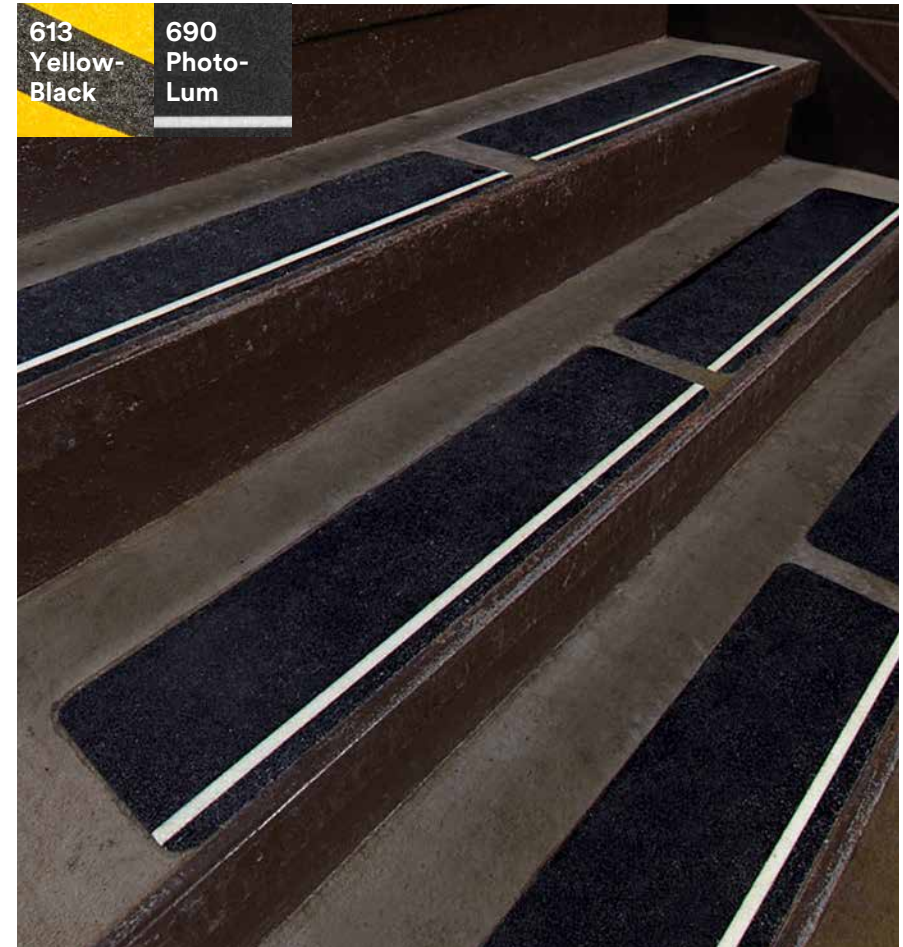
Flat surfaces | Steps | Stairways | Entrances | Ramps | Ladders | Lawn equipment | Snowmobiles | Scooters | Construction machinery and vehicles | Other machinery and vehicles

Highly durable mineral particles with low profile that helps reduce trip hazard



600 Series.

For shoe traffic areas with graphic opportunity



3M™ Safety-Walk™ Slip-Resistant General Purpose Tapes and Treads

Photo-Luminescent | Interior stairways w/o outside lighting | Egresses | For prevention of slips in dark environments

Yellow-Black | Visibility | Stands out even more than just yellow or areas that need calling attention to | Marking boundaries | Lane marking

Clear Graphic | Clear abrasive over your custom graphic | Retail branding | Directional signage | Watercraft and recreational vehicle graphics



3M™ Safety-Walk™ Slip-Resistant Treads & Tapes Ordering Information

Model Number	Color	Description	Tread Sizes	Tape Sizes
220	Clear	Fine Resilient	6 in. x 24 in.	Custom sizes available from 1 in. to 48 in wide x 6 ft. to 480 ft. long. Also available in standard sizes.
280	White			
7705	White			
310	Black	Medium Resilient	6 in. x 24 in.	Custom sizes available from 1 in. to 48 in wide x 6 ft. to 480 ft. long. Also available in standard sizes.
370	Gray			
510	Black	Conformable	6 in. x 24 in.	Custom sizes available from 1 in. to 48 in wide x 6 ft. to 480 ft. long. Also available in standard sizes.
530	Safety Yellow			
610	Black	General Purpose	3/4 in. x 24 in. 5-1/2 in. x 5-1/2 in. 6 in. x 24 in.	Custom sizes available from 1 in. to 48 in wide x 6 ft. to 480 ft. long. Also available in standard sizes.
620	Clear			
630	Safety Yellow			
690	Photo-Lum			
613	Yellow-Black			
710	Black	Coarse	6 in. x 24 in.	Custom sizes available from 1 in. to 48 in wide x 6 ft. to 480 ft. long. Also available in standard sizes.
770	Gray			

Product Use: Many factors beyond 3M's control and uniquely within user's knowledge and control can affect the performance and useful life of 3M™ Safety-Walk™ Slip-Resistant Tapes and Treads products, including the type and preparation of the surface, and the conditions of use. User is solely responsible for evaluating the product and determining whether it is fit for user's particular purpose and adequately maintained.

Warranty, Limited Remedy, and Disclaimer: 3M warrants that its 3M™ Safety-Walk™ Slip-Resistant Tapes and Treads products will be free from defects in material and manufacture at the time of purchase from 3M's authorized distributor. 3M MAKES NO OTHER EXPRESS OR IMPLIED WARRANTIES, INCLUDING ANY IMPLIED WARRANTY OF MERCHANTABILITY OR FITNESS FOR A PARTICULAR PURPOSE. If a 3M™ Safety-Walk™ Slip-Resistant Tapes and Treads product does not conform to this warranty, the sole and exclusive remedy is, at 3M's option, replacement of the 3M product or refund of the purchase price.

Limitation of Liability: Except where prohibited by law, 3M will not be liable for any loss or damage arising from its 3M™ Safety-Walk™ Slip-Resistant Tapes and Treads products, whether direct, indirect, special, incidental or consequential, regardless of the legal theory asserted.

To learn more, or to request samples, go to www.3M.com/safetywalk



Commercial Solutions Division
3M Center, Building 220-12E-04
St. Paul, MN 55144 USA

Phone 1-800-852-9722
Web 3M.com/safetywalk

Please recycle. Printed in U.S.A.
The NFSI logo is a registered trademark of the National Floor Safety Institute.
3M and Safety-Walk are trademarks of 3M.
Used under license in Canada.
© 3M 2017. All rights reserved.
78-8134-0719-0