



Fireshield WoodSafe™- exterior is a factory applied, fire rated solution used to impregnate timber to provide non-combustible, fire rated **Type A** and **Group 1-S** timber surfaces. No on site fire treatment is required.

**RECOMMENDED USE**

WoodSafe™-exterior treated timbers are available in various wood species in any board profile, batten or sheet from all major timber Merchants nationwide or as finished timber supplied direct from Fireshield. WoodSafe™-exterior treated timber can be used as:

- Exterior timber claddings Type A
- Interior / Exterior wall & ceiling linings Group 1-S

For internal dry areas consider using Fireshield® WoodSafe™-interior.

**DURABILITY**

**Fire Protection Durability**

WoodSafe™-exterior impregnated timbers have been weather tested to ASTM D 2898 Method B, and EN16755:2017 (INT-1, INT-2 and EXT and EXT-LR) for durability of reaction to fire performance and can be used in exterior environments without any protective applied stain or coating to achieve the fire classification.

**Timber Durability**

Timbers treated with WoodSafe™-exterior will weather and age at the same rate as untreated timber, WoodSafe does not decrease the service life of the timber.

WoodSafe™-exterior treated timbers that are:

- Exposed to exterior weather conditions and dampness must comply with E2/AS1, B2/AS1 and be selected from Table 2, NZS 3602:2003 to achieve 15 year durability compliance.
- Interior finishing timbers must be selected from Table 3A NZS3602:2003 to achieve 5 year compliance.

**MAINTENANCE**

The WoodSafe™-exterior fire protection treatment is maintenance free and will last the lifetime of the timber when stored, installed and maintained in accordance with this document.

WoodSafe™-exterior timbers will age and behave the same as untreated timbers of the same species.

- WoodSafe™-exterior fire protection system has the ability to resist impact and abrasion.
- Excessive wear may damage the fire protection system and if so, require inspection and possible replacement.

Coatings applied to WoodSafe™-exterior timbers will need to be maintained as per the coating manufacturers technical specifications.

**TIMBER INFORMATION**

**EXTERIOR CLADDING - TYPE A**

Species	Minimum thickness	Density (kg/m <sup>3</sup> )	Fire Rating
Western Red Cedar*	18mm	460-500	Type - A Cladding
Western Red Cedar*	9mm	402-473	Type - A Cladding

Timber species marked with \* in Table 1 above comply with NZS 3602:2003 Table 2A without the need for H3.1 treatment and meet the durability requirement of NZBC B2.3.1 (c) for 15 years.

**EXTERIOR / INTERIOR LININGS - GROUP 1-S**

Species	Minimum thickness	Density (kg/m <sup>3</sup> )	Fire Rating
Scotch Pine	18mm	500-570	Group 1-S
Western Red Cedar*	18mm	460-500	Group 1-S
Western Red Cedar*	9mm	402-473	Group 1-S
Douglas Fir/Oregon	18mm	449-746	Group 1-S
Siberian Larch*	18mm	567-825	Group 1-S
Oak	18mm	479-868	Group 1-S
Spruce	18mm	392-566	Group 1-S
Accoya®	17mm	510-620	Group 1-S

NOTE: Contact Fireshield prior to specifying to confirm timber availability, sizes and various face grades available.

**FIRE COMPLIANCE**

**TYPE A**

Tested to C/AS2 Appendix C, C7.1 : achieving Type A compliance with C/AS2 NZBC External Fire Spread.

**GROUP 1-S**

Tested to EN13501-1:2010 and achieves Fire Class B-s1-d0. This is recognised as equivalent to Group 1-S under the NZBC Clause 3.4(a) providing compliance with NZBC C/AS1-C/AS7 Group Surface Ratings.

**WARRANTY**

When stored, installed and maintained in accordance with this document the fire protection properties will remain for the service life span of the timber (subject to terms and conditions).

**SUSTAINABILITY**

All Fireshield WoodSafe™-exterior timber products are certified by FSC and PEFC. Certification for each timber species will follow your order.

## TIMBER INSTALLATION

In addition to the relevant New Zealand standards, The New Zealand Building Code and local Council guidelines, the timber must be installed in accordance with the guidelines below in conjunction with timber Merchant/Suppliers installation instructions:

- See the WoodSafe Installation Supplement for the Type A exterior system requirements and fixing details.
- Screw or nail fixings can be used.
- The head of the fixing should sit flush with the surface of the timber.
- Use the appropriate fixing type for the timber species specified by the timber Merchant/Supplier such as stainless steel nail and screw fixings that have excellent anti-corrosive characteristics and can sustain aggressive environmental conditions, for example stainless steel A4/AISI 316.
- For interior use, WoodSafe treated timbers can be direct fixed to timber framing, existing linings and steel frame.
- Contact Fireshield® prior to commencing any planing of the exposed timber surface if dimensional adjustments are required. Minor planing is acceptable.
- Drilling and creating perforations or holes is allowed, for example power box installation.
- The moisture content of **WoodSafe™-exterior** timbers cannot be measured using standard probe techniques. Dry weight measurement calculations must be used.
- **WoodSafe™-exterior** timbers do not decrease the life span of tools used in the installation process, however some tool surface discolouration can occur.
- Off cuts are safe to be collected and disposed of as per untreated timber regulations and guidelines.

## PRECAUTIONS

The following precautions must be taken:

- Read the **WoodSafe™-exterior** Material Safety Data Sheet (MSDS) before installation and have a copy available on site at all times.
- Where conditions may require variation from the recommendations on this Technical Data Sheet you must contact Fireshield® for advice prior to installation.
- Do not use or install in conditions outside the parameters stated in this document without the express written consent of Fireshield.
- All work involving the use of WoodSafe product should be compliant with all relevant National Health, Work Safety & Environmental standards and regulations for timber products. For example wear dust mask, eye protection and gloves when handling and cutting timber.

## SUPPLIER : FIRESHIELD®

New Zealand  
Level 1, 60 Cashel Street  
Christchurch 8013,  
New Zealand  
Ph: 0800 347 374  
[www.fireshieldcoatings.com](http://www.fireshieldcoatings.com)



## COATINGS

**WoodSafe™-exterior** can be coated with Fireshield® approved stains, penetrating oils, paints, and polyurethanes. For the approved coatings list contact Fireshield.

### Preparation

- The surface to be coated must be completely clean and dry. Remove all dust, oil, grease, loose material or other contaminants.
- **WoodSafe™-exterior** timbers can be lightly sanded prior to coating.
- Moisture content of the timber should not exceed 12-14% prior to coating.
- Follow coating Manufacturers technical data sheets for product application instructions.
- Always test coatings prior to full application on a small area first.
- Fireshield® approved coatings are tested for fire performance. Fireshield® is not responsible for any unexpected discolouration or inconsistencies in the visual appearance that may occur using an approved coating.

## STORAGE CONDITIONS

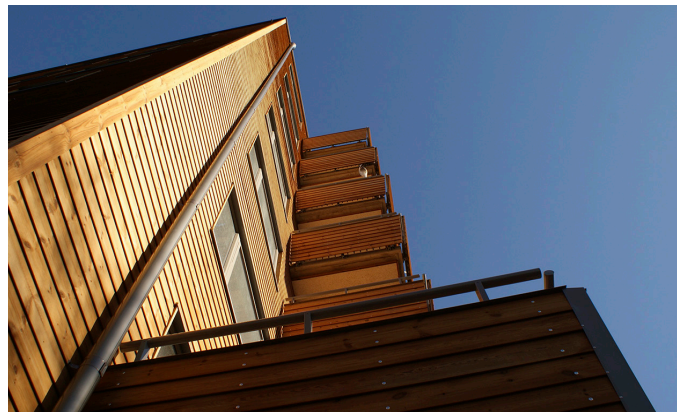
Moisture content when delivered is 15 - 20%.

Recommended storage conditions:

- Must be stored in a controlled environment equivalent to the final installation environment.
- The timber must be stored elevated (> 100mm) from ground or from a damp surface.
- Do not store timber packages tilted or on edge.
- Protect against dirt, contamination, direct sunlight, and rain during transport.
- Maintain straps until assembly is performed.

Fireshield® will not be liable for any product failure if the conditions as to storage, handling, use and maintenance of **WoodSafe™-exterior** timbers as outlined in this document are not complied with.

The **WoodSafe™-exterior** treated timber must be allowed to acclimatise for a sufficient period of time to avoid cupping and shrinkage. As a guide, always allow **WoodSafe™-exterior** timbers to acclimatize for at least 14 days in the same environment they will be installed in before installing permanently.



It is the user's responsibility to check that you have the latest technical datasheet available by visiting [fireshieldcoatings.com](http://fireshieldcoatings.com) or checking with your local Fireshield Representative as the information contained in this technical data sheet is modified from time to time in line with our policy of continuous product development. The information in this data sheet is not intended to be exhaustive; any person using the product for any purpose other than that specifically recommended in this data sheet does so at their own risk. All advice given or statements made about the product (whether in this data sheet or otherwise) are correct to the best of our knowledge. Unless we specifically agree in writing to do so, we do not accept any liability at all for the performance of the product or for (subject to the maximum extent permitted by law) any loss or damage arising out of the use of the product. Fireshield hereby disclaim any warranties or representations, express or implied, by operation of law or otherwise, including, without limitation, any implied warranty of merchantability or fitness for a particular purpose. You should request a copy of this document and review it carefully.