

# COMMERCIAL RIBLINE ROOFING TRANSLUCENT

DETAIL NO.

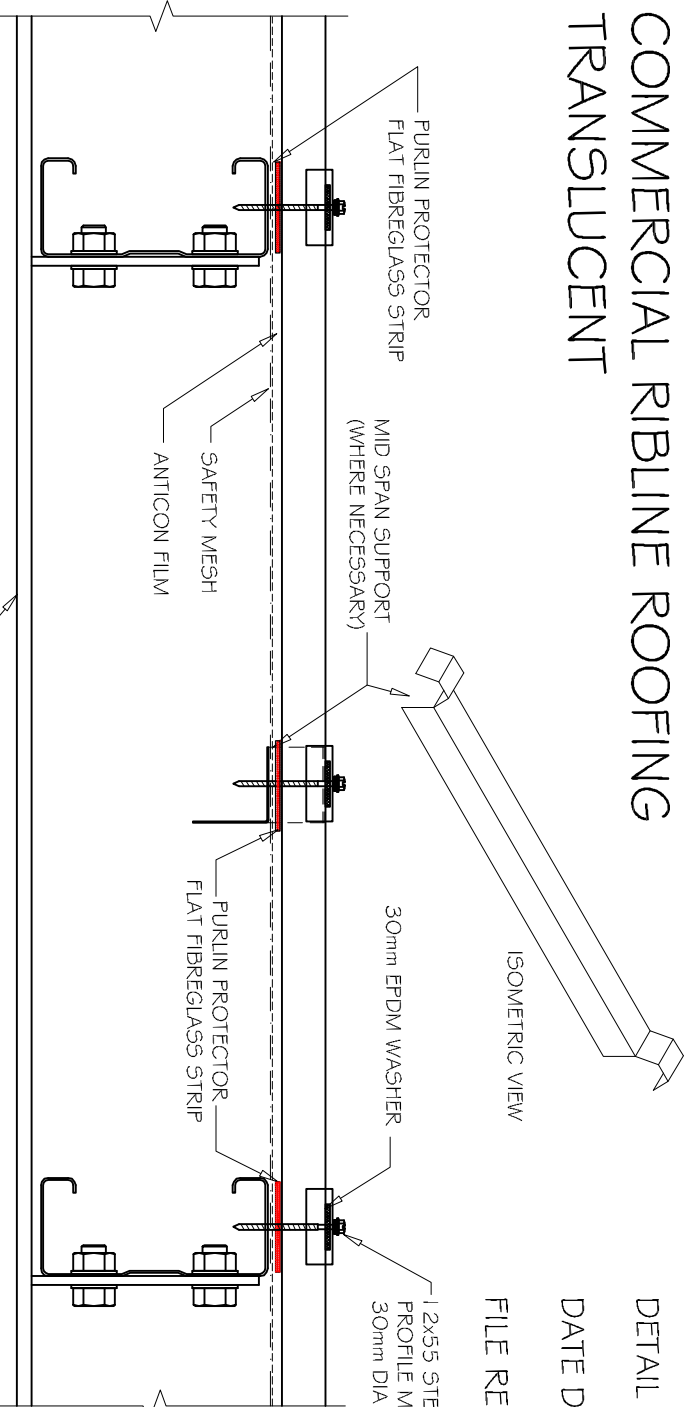
CRRO4 1 A

DATE DRAWN

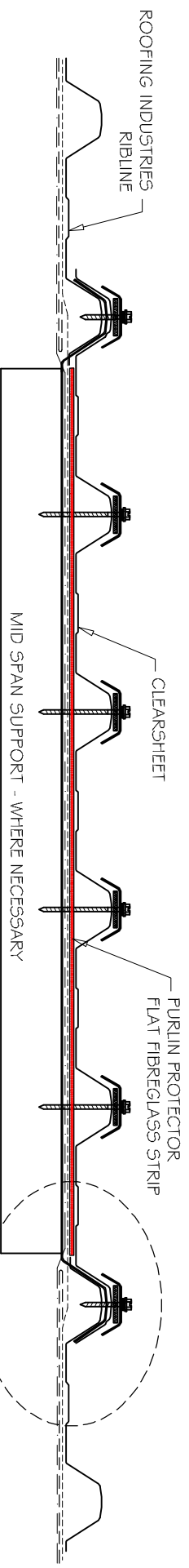
16/08/12

FILE REFERENCE

RI-CRRO4 1 A.DWG



- NOTE:
- (1) MINIMUM PITCH 3°
  - (2) DRILL OVERSIZE HOLES IN TRANSLUCENT SHEETING PRIOR TO FIXING.
  - (3) USE MID SPAN SUPPORT WHEN SPANS EXCEED MAXIMUM SPAN, OR SPECIFY HEAVIER WEIGHT GRP SHEET WHICH IS THE RECOMMENDED OPTION.
  - (4) USE ANTI CONDENSATION FILM UNDER CLEAR SHEETS WHERE CONDENSATION LIKELY, BUT DIFFICULT TO USE WHERE MIDSPAN SUPPORTS ARE USED.



- NOTES:
- These details are generally in compliance with the NZ Metal Roof & Wall Cladding Code of Practice and in some cases specific details by 'Roofing Industries'.
  - The building designer is ultimately responsible to ensure that details used meet the requirements of the NZ Building Code for the specific project.
  - Details of the supporting structure are indicative only and are the responsibility of the building designer.
  - Thermal break or cavity battens may be required in some circumstances.
  - Underlayment selection and building wrap types are the responsibility of the designer.
  - Alternative support to galvanised netting should be used in severe coastal environments including when aluminum is used.
  - These details are for Roofing Industries profiles as nominated and may not be applicable to other profiles.
  - This drawing is the copyright of 'Roofing Industries' and can only be copied or reproduced with their permission.
  - Further information can be obtained from the NZ Metal Roof & Wall Cladding Code of Practice [www.metaloofers.org.nz](http://www.metaloofers.org.nz) & [www.roof.co.nz](http://www.roof.co.nz)
  - Where necessary adjust drawings for Purlin battens or cavity battens.
  - Details are for steel based materials, other substrate may require some changes.

