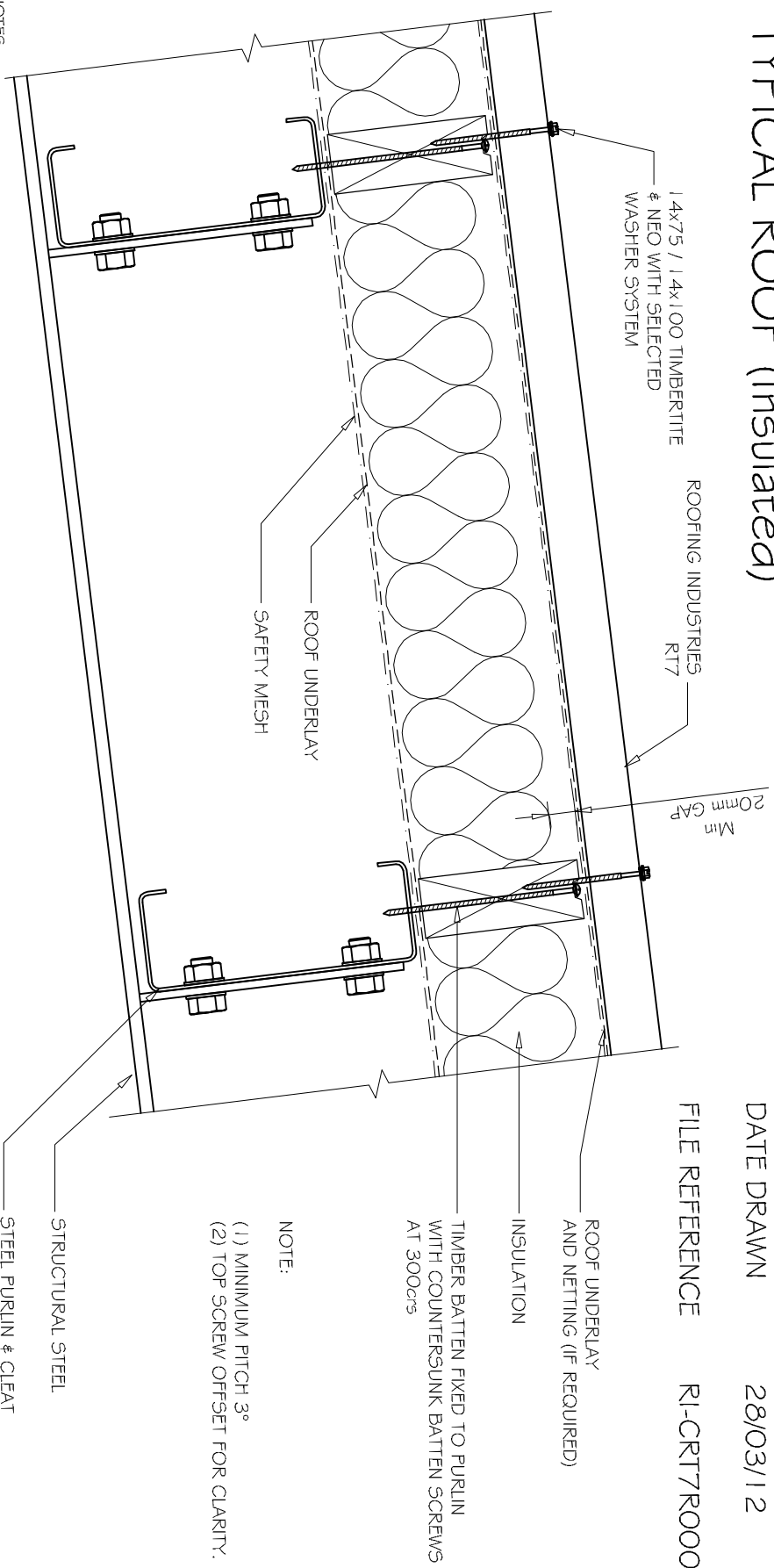


COMMERCIAL RT7 ROOFING TYPICAL ROOF (Insulated)

DETAIL NO. CRT7R000A-1

DATE DRAWN 28/03/12

FILE REFERENCE R1-CRT7R000A-1.DWG

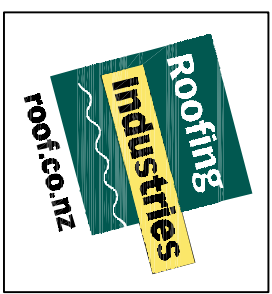


NOTE:
(1) MINIMUM PITCH 3°
(2) TOP SCREW OFFSET FOR CLARITY.

NOTES:

- These details are generally in compliance with the NZ Metal Roof & Wall Cladding Code of Practice and in some cases specific details by Roofing Industries.
- The building designer is ultimately responsible to ensure that details used meet the requirements of the NZ Building Code for the specific project.
- Details of the supporting structure are indicative only and are the responsibility of the building designer.
- Thermal break or cavity battens may be required in some circumstances.
- Underlay selection and building wrap types are the responsibility of the designer. Alternative support to galvanised netting should be used in severe coastal environments including when aluminum is used.
- These details are for Roofing Industries profiles as nominated and may not be applicable to other profiles.
- This drawing is the copyright of Roofing Industries and can only be copied or reproduced with their permission.
- Further information can be obtained from the NZ Metal Roof & Wall Cladding Code of Practice www.metdroofer.org.nz & www.roof.co.nz
- Where necessary adjust drawings for purlin battens or cavity battens.
- Details are for steel based materials, other substrate may require some changes.

A
-
1:5
TYPICAL ROOF (Insulated)



©COPYRIGHT DETAIL 2012