

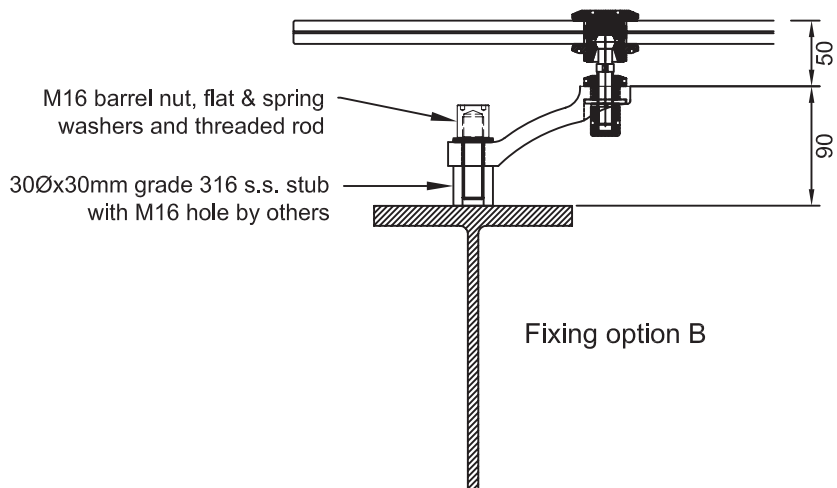
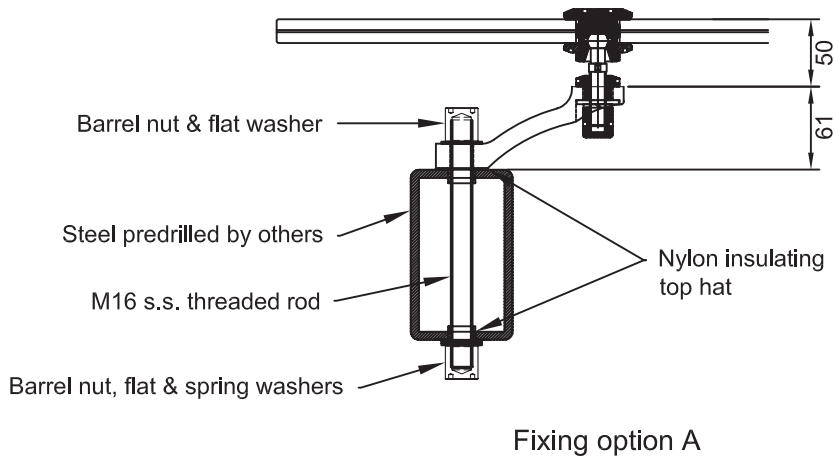
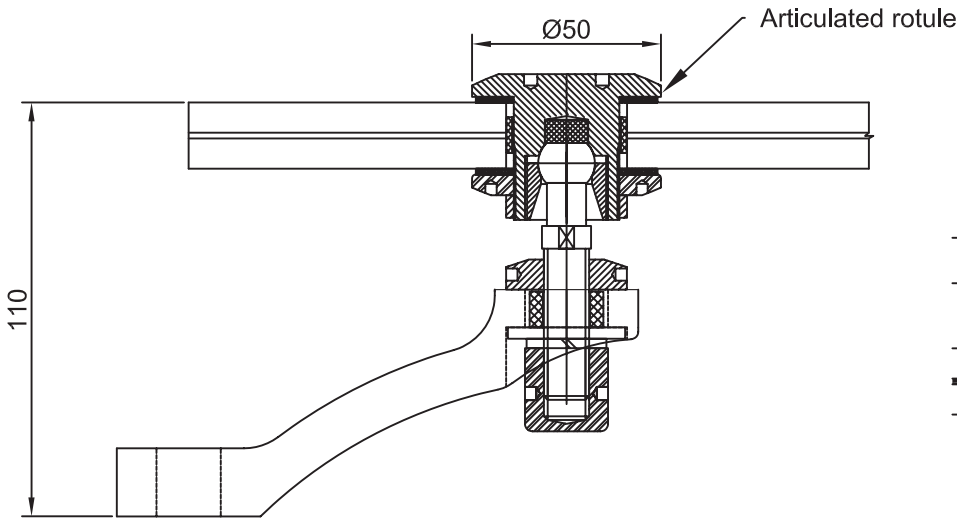
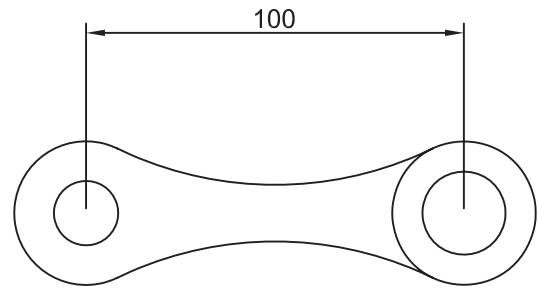
SPYDER CX1 One way spyder fitting - hole fixed

AVAILABLE FINISHES

- Satin stainless steel
- Polished stainless steel (subject to price and leadtime)

TECHNICAL DETAILS

- 316 stainless steel
- Supplied with flat head articulated rotules
- CXFHABM12 articulated rotule takes 10mm to 17.5mm glass thicknesses
- Glass hole diameter 32mm (see detail below)
- N.B. fixings to the supporting structure are project specific and are supplied as an extra



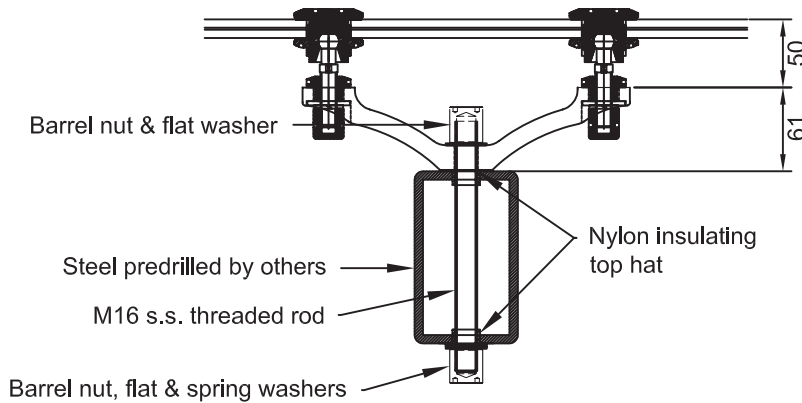
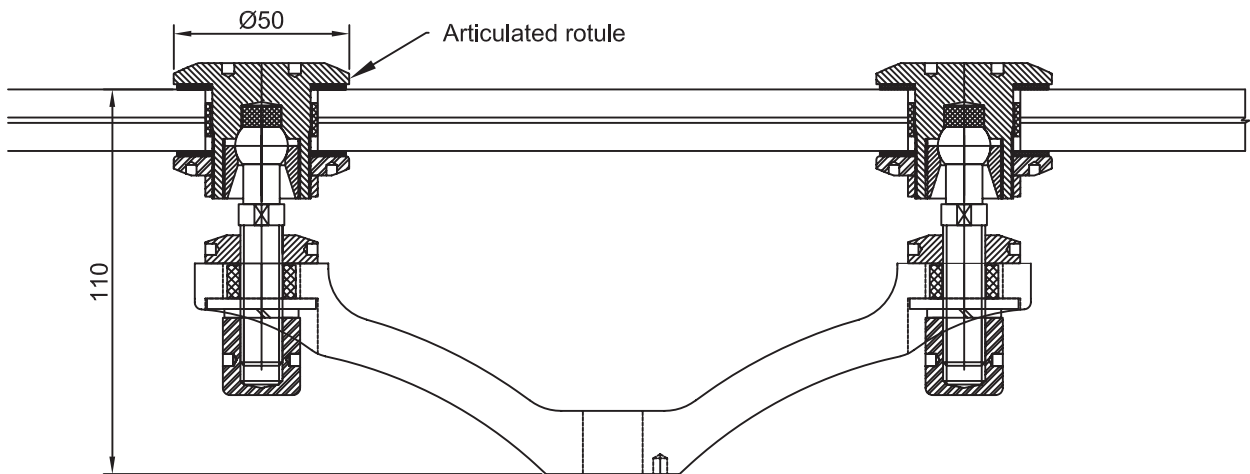
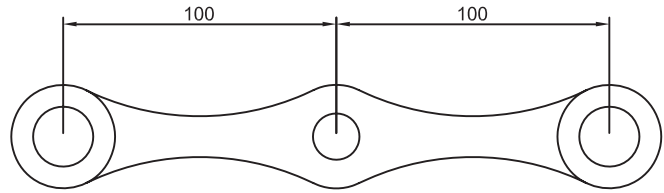
SPYDER CX2 Two way 180° spyder fitting - hole fixed

AVAILABLE FINISHES

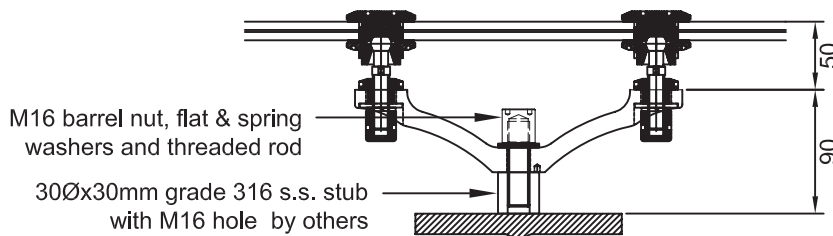
- Satin stainless steel
- Polished stainless steel (subject to price and leadtime)

TECHNICAL DETAILS

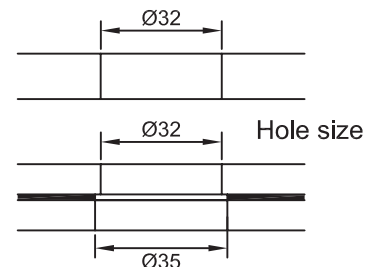
- 316 stainless steel
- Supplied with flat head articulated rotules
- CXFHABM12 articulated rotule takes 10mm to 17.5mm glass thicknesses
- Glass hole diameter 32mm (see detail below)
- N.B. fixings to the supporting structure are project specific and are supplied as a extra



Fixing option A



Fixing option B



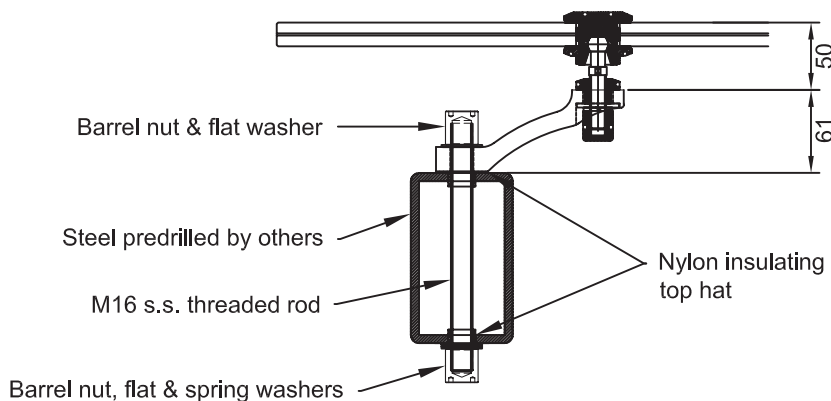
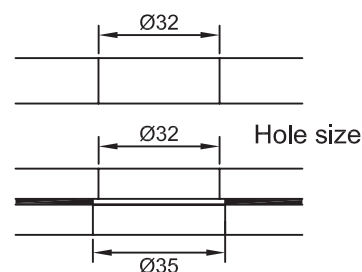
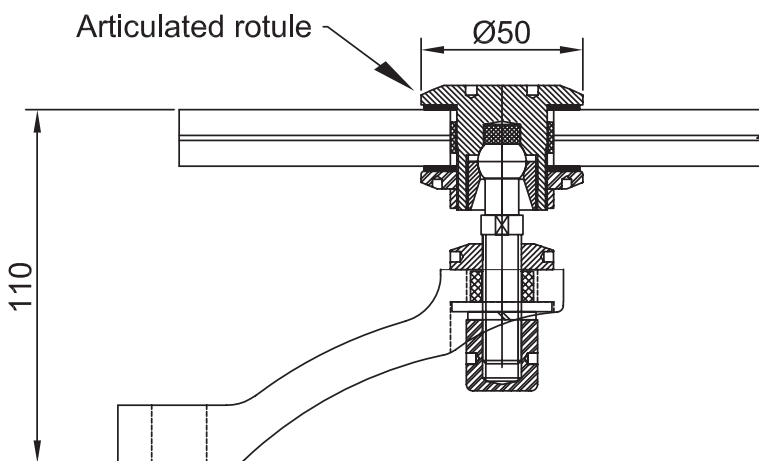
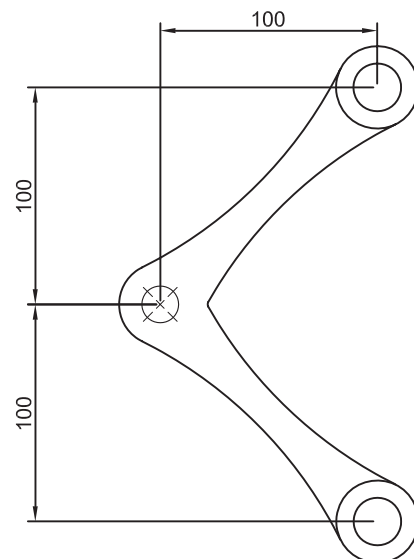
SPYDER CX290 Two way 90° spyder fitting - hole fixed

AVAILABLE FINISHES

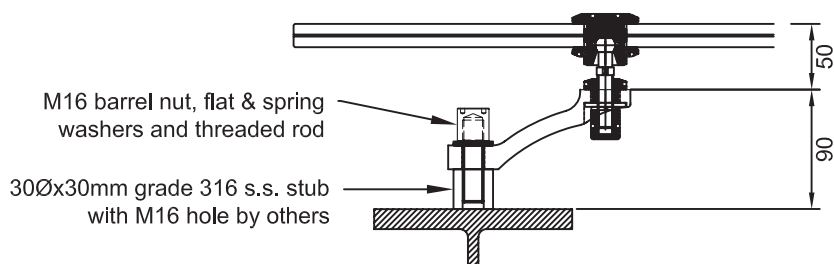
- Satin stainless steel
- Polished stainless steel (subject to price and leadtime)

TECHNICAL DETAILS

- 316 stainless steel
- Supplied with flat head articulated rotules
- CXFHABM12 articulated rotule takes 10mm to 17.5mm glass thicknesses
- Glass hole diameter 32mm (see detail below)
- N.B. fixings to the supporting structure are project specific and are supplied as a extra



Fixing option A



Fixing option B

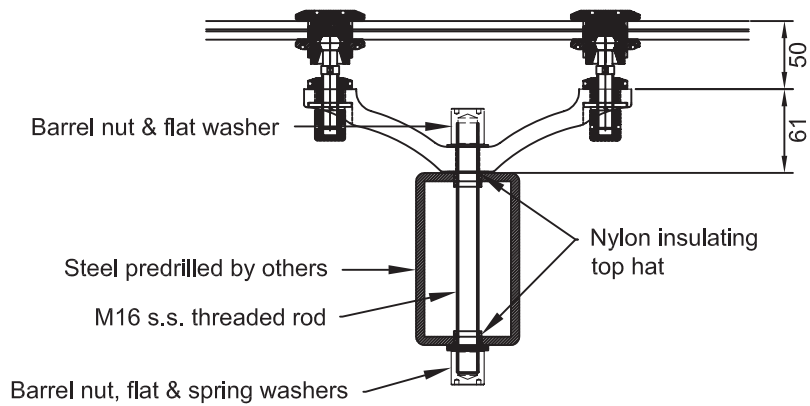
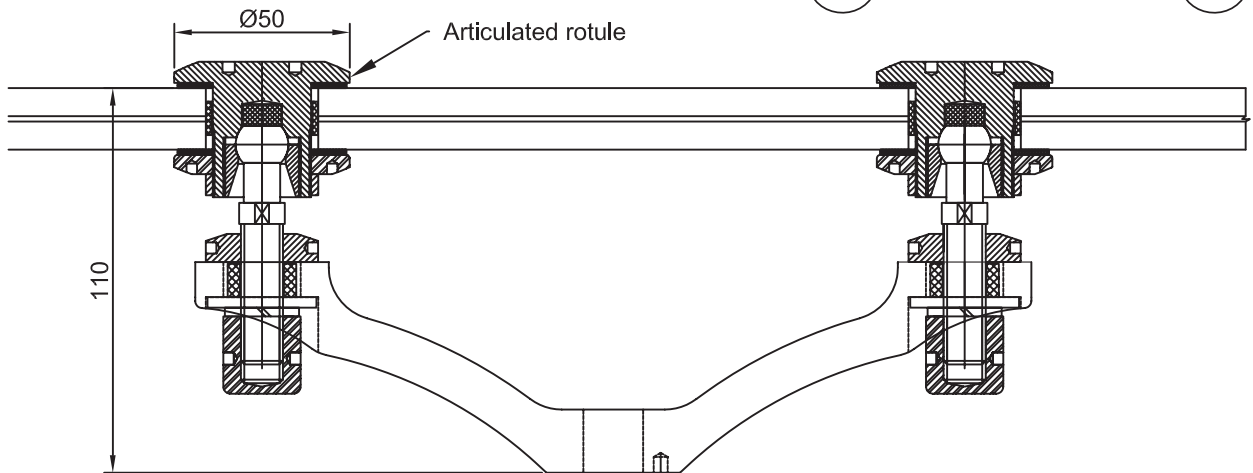
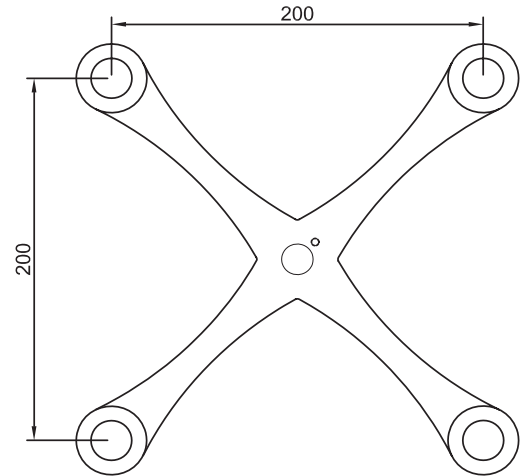
SPYDER CX4 Four way spyder fitting - hole fixed

AVAILABLE FINISHES

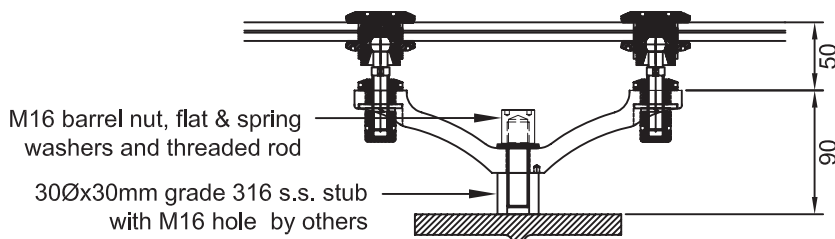
- Satin stainless steel
- Polished stainless steel (subject to price and leadtime)

TECHNICAL DETAILS

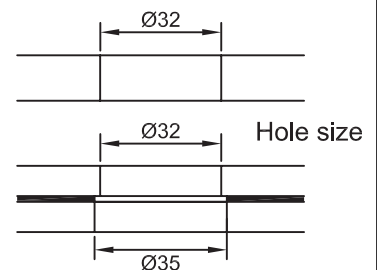
- 316 stainless steel
- Supplied with flat head articulated rotules
- CXFHABM12 articulated rotule takes 10mm to 17.5mm glass thicknesses
- Glass hole diameter 32mm (see detail below)
- N.B. fixings to the supporting structure are project specific and are supplied as a extra



Fixing option A



Fixing option B



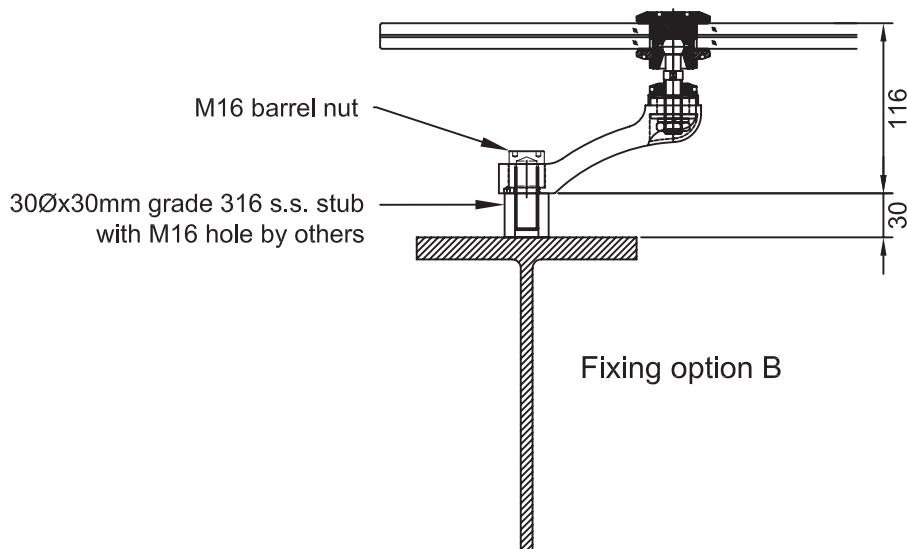
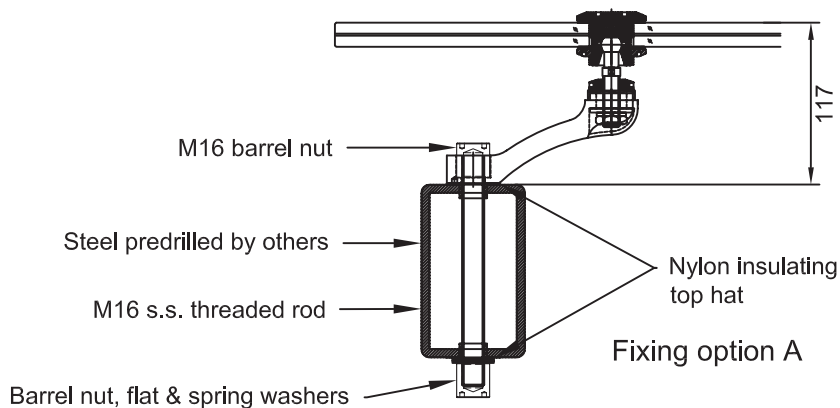
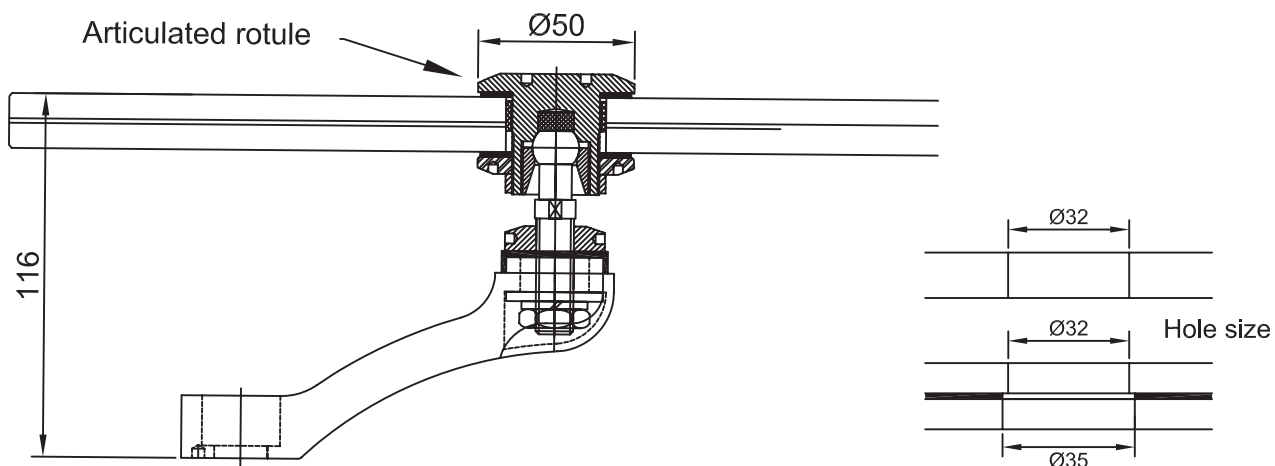
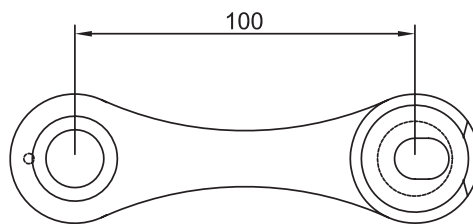
SPYDER C1 One way spyder fitting with rotule cover cap - hole fixed

AVAILABLE FINISHES

- Polished stainless steel
- Satin stainless steel (subject to price and leadtime)

TECHNICAL DETAILS

- 316 stainless steel
- Supplied with flat head articulated rotules
- CFHABM12 articulated rotule takes 10mm to 17.5mm glass thicknesses
- Glass hole diameter 32mm (see detail below)
- N.B. fixings to the supporting structure are project specific and are supplied as a extra



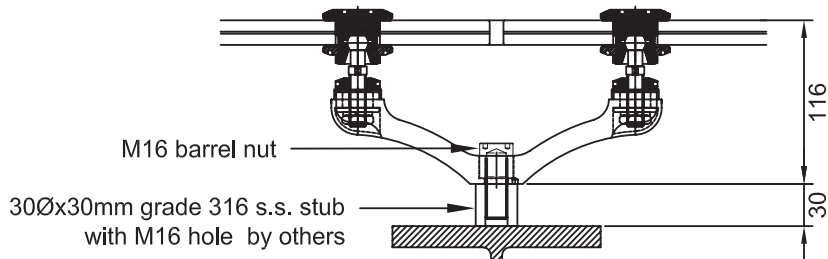
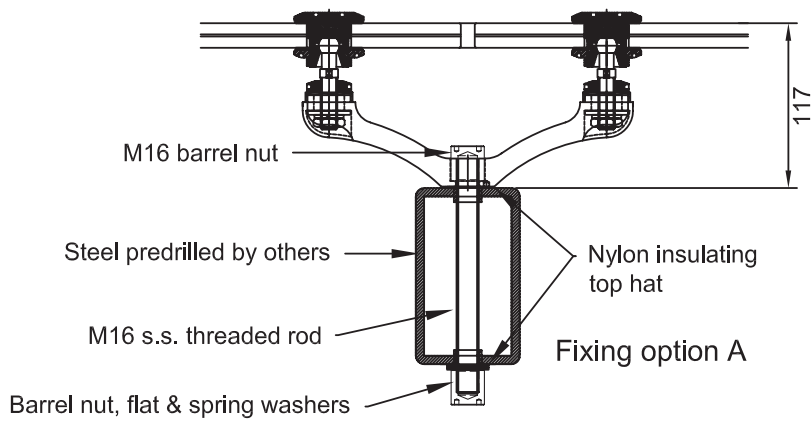
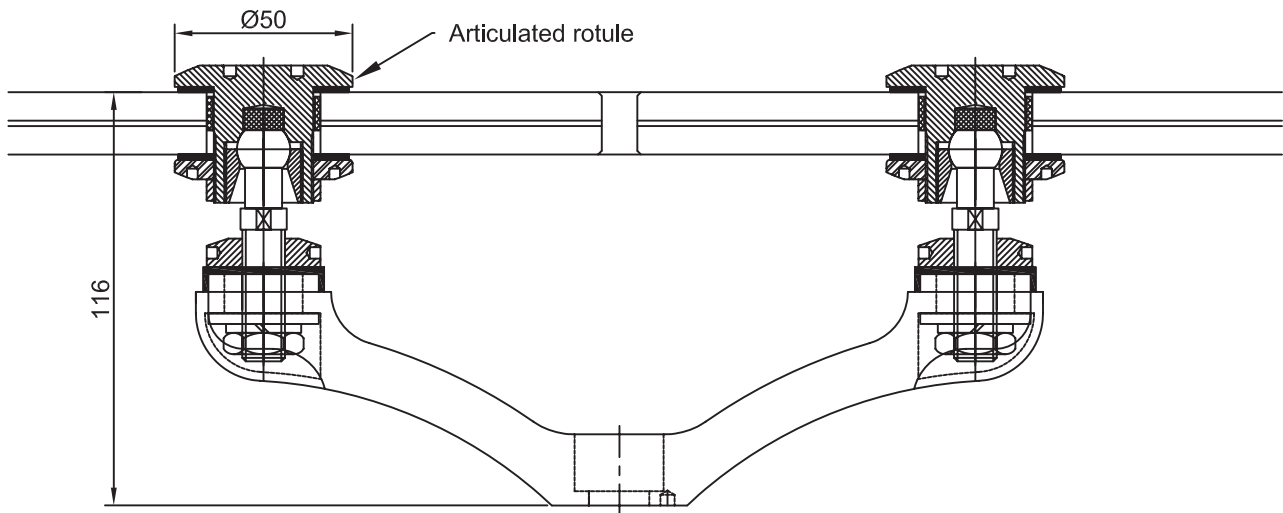
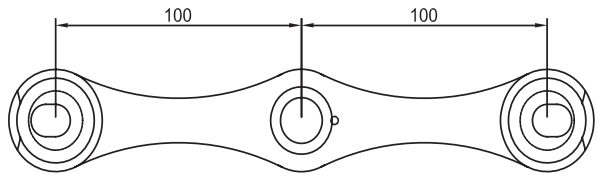
SPYDER C2 Two way 180° spyder fitting with rotule cover cap - hole fixed

AVAILABLE FINISHES

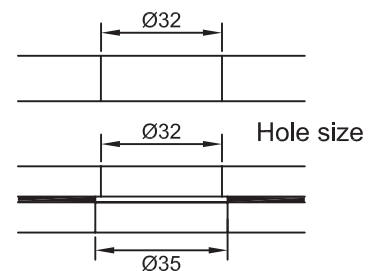
- Polished stainless steel
- Satin stainless steel (subject to price and leadtime)

TECHNICAL DETAILS

- 316 stainless steel
- Supplied with flat head articulated rotules
- CFHABM12 articulated rotule takes 10mm to 17.5mm glass thicknesses
- Glass hole diameter 32mm (see detail below)
- N.B. fixings to the supporting structure are project specific and are supplied as a extra



Fixing option B



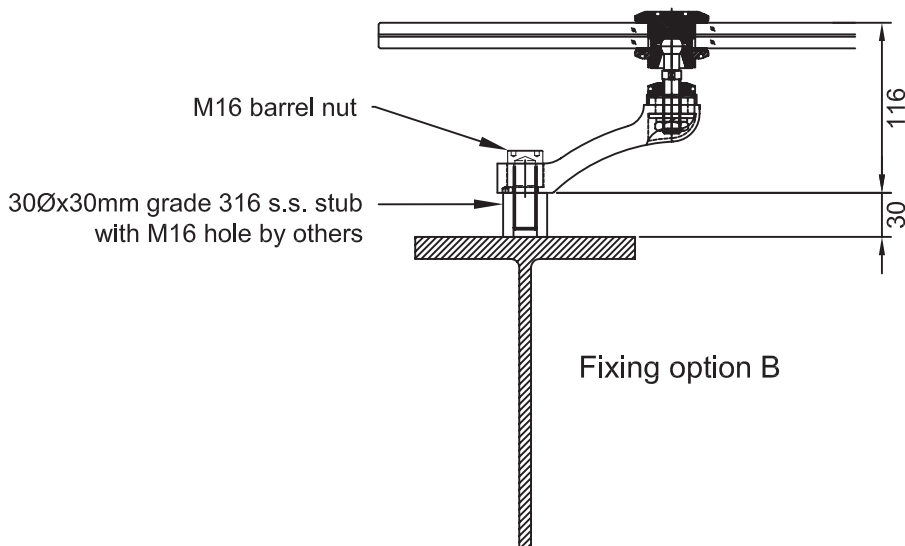
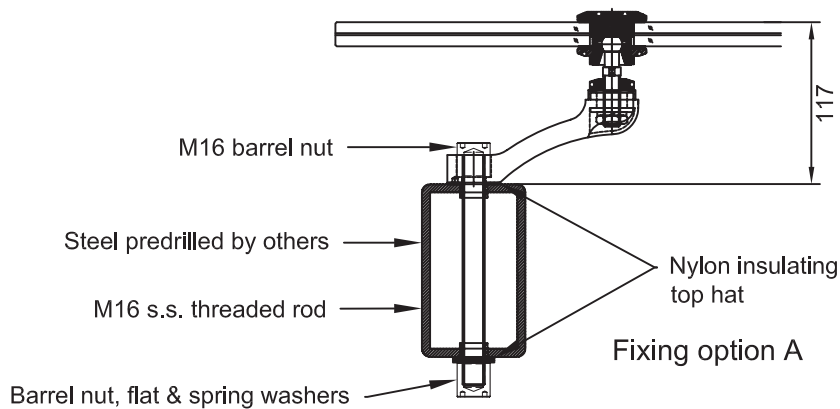
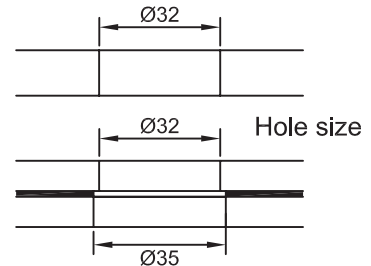
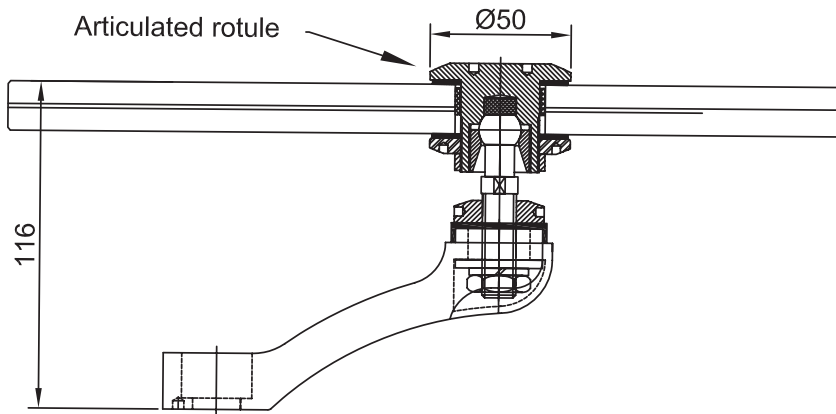
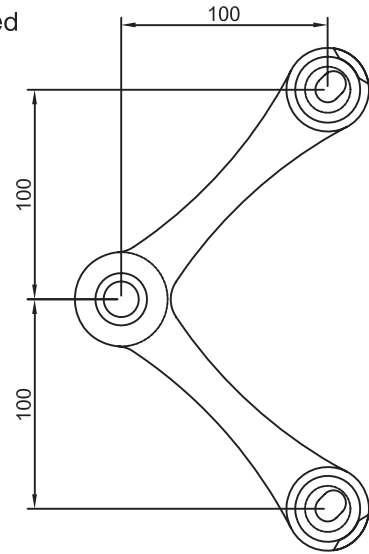
SPYDER C290 Two way 90° spyder fitting with rotule cover cap - hole fixed

AVAILABLE FINISHES

- Polished stainless steel
- Satin stainless steel (subject to price and leadtime)

TECHNICAL DETAILS

- 316 stainless steel
- Supplied with flat head articulated rotules
- CFHABM12 articulated rotule takes 10mm to 17.5mm glass thicknesses
- Glass hole diameter 32mm (see detail below)
- N.B. fixings to the supporting structure are project specific and are supplied as a extra



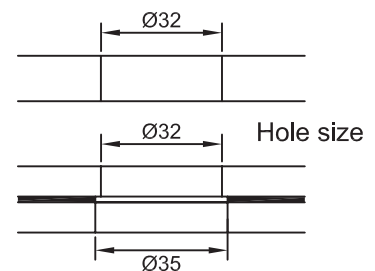
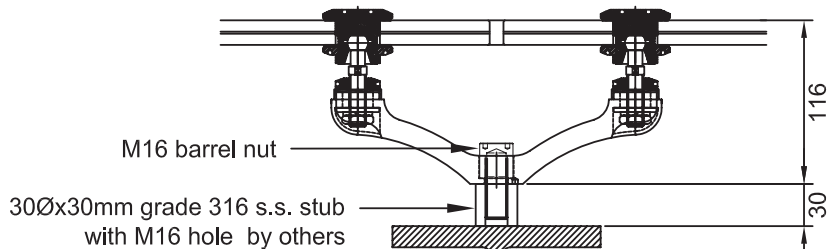
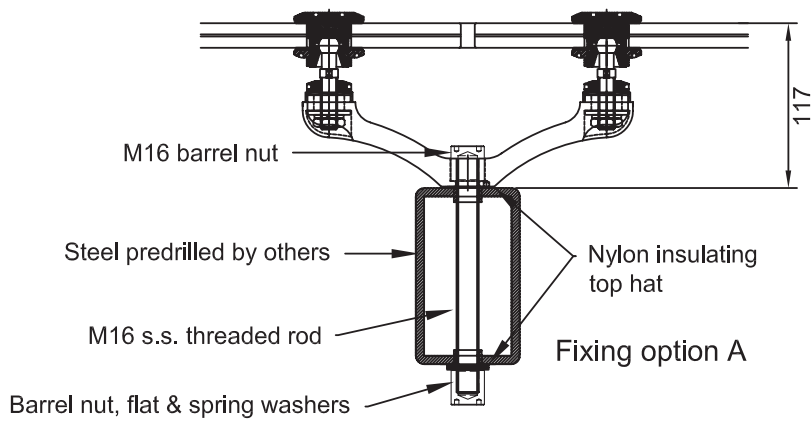
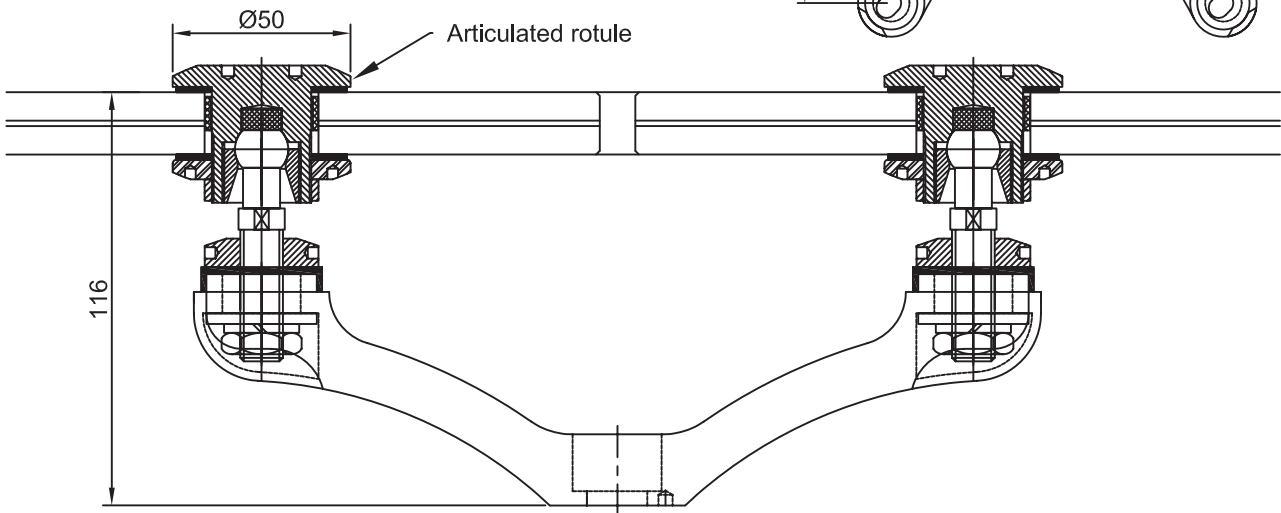
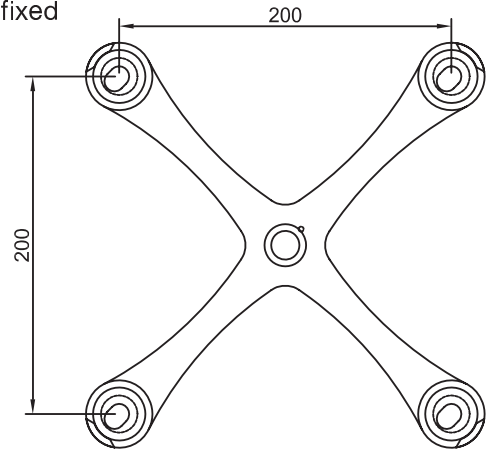
SPYDER C4 Four way spyder fitting with rotule cover cap - hole fixed

AVAILABLE FINISHES

- Polished stainless steel
- Satin stainless steel (subject to price and leadtime)

TECHNICAL DETAILS

- 316 stainless steel
- Supplied with flat head articulated rotules
- CFHABM12 articulated rotule takes 10mm to 17.5mm glass thicknesses
- Glass hole diameter 32mm (see detail below)
- N.B. fixings to the supporting structure are project specific and are supplied as a extra



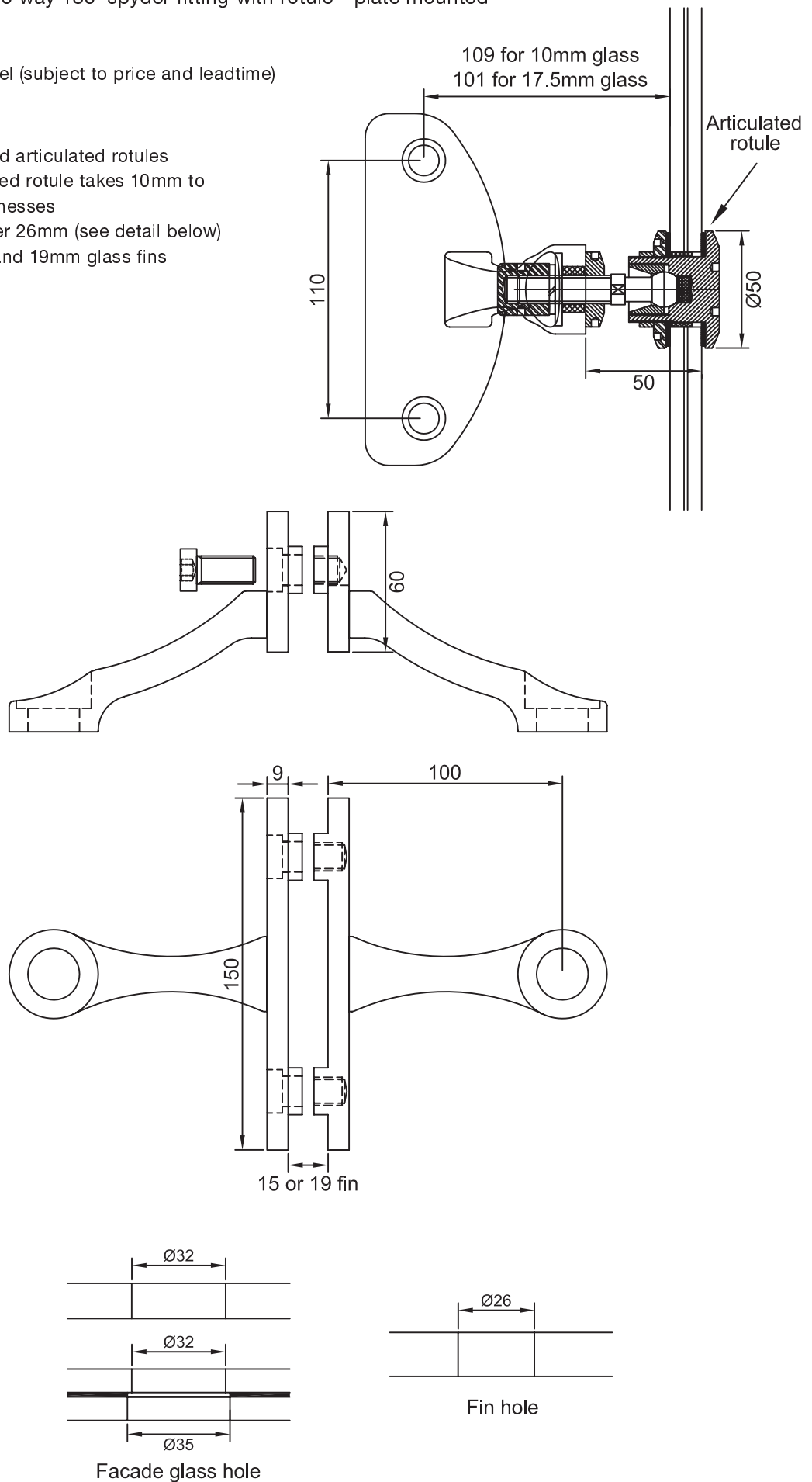
SPYDER FNZCX1 Two way 180° spyder fitting with rotule - plate mounted

AVAILABLE FINISHES

- Satin stainless steel
- Polished stainless steel (subject to price and leadtime)

TECHNICAL DETAILS

- 316 stainless steel
- Supplied with flat head articulated rotules
- CXFHABM12 articulated rotule takes 10mm to 17.5mm glass thicknesses
- Glass fin hole diameter 26mm (see detail below)
- Spyder fits to 15mm and 19mm glass fins



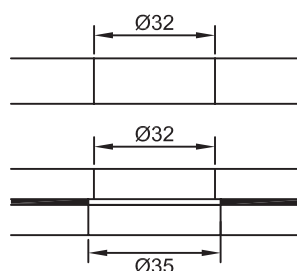
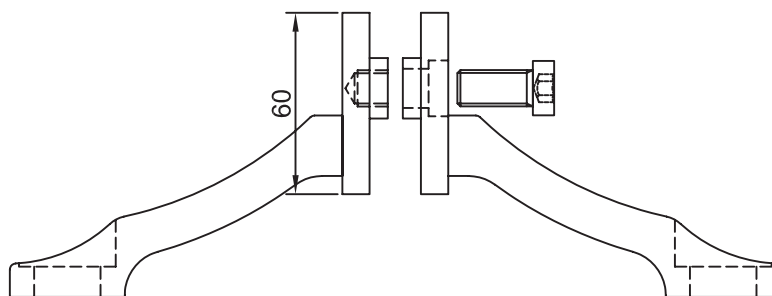
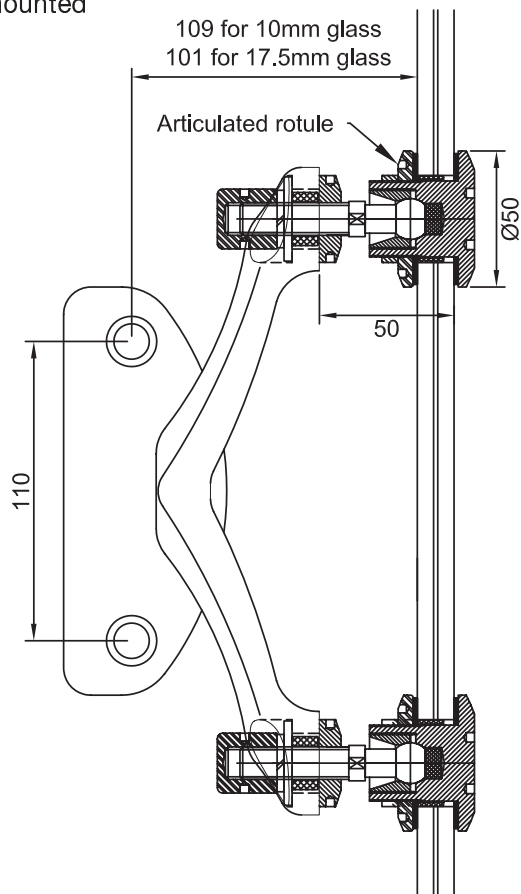
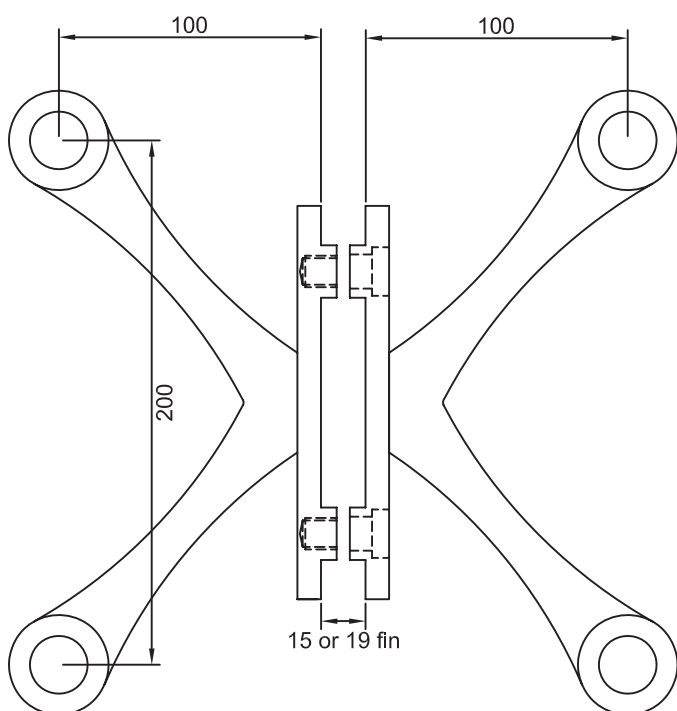
SPYDER FNZCX2 Four way spyder fitting with rotule - plate mounted

AVAILABLE FINISHES

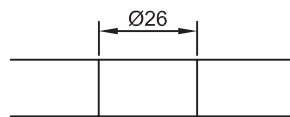
- Satin stainless steel
- Polished stainless steel (subject to price and leadtime)

TECHNICAL DETAILS

- 316 stainless steel
- Supplied with flat head articulated rotules
- CXFHABM12 articulated rotule takes 10mm to 17.5mm glass thicknesses
- Glass fin hole diameter 26mm (see detail below)
- Spyder fits to 15mm and 19mm glass fins



Facade glass hole



Fin hole

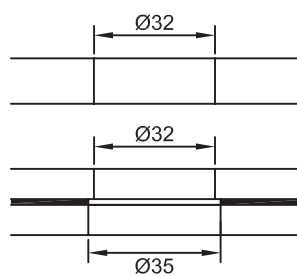
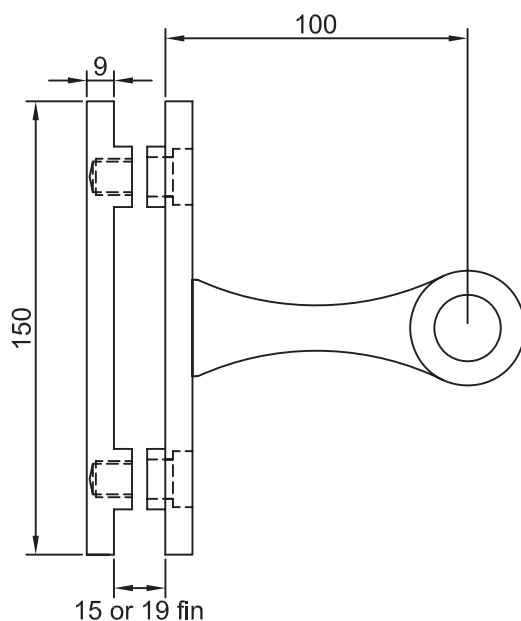
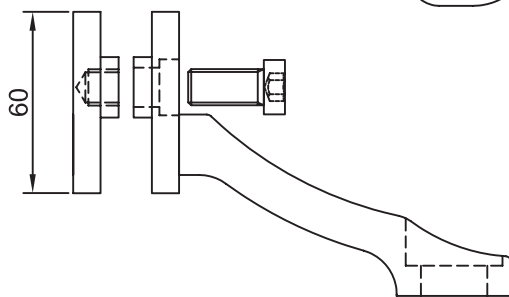
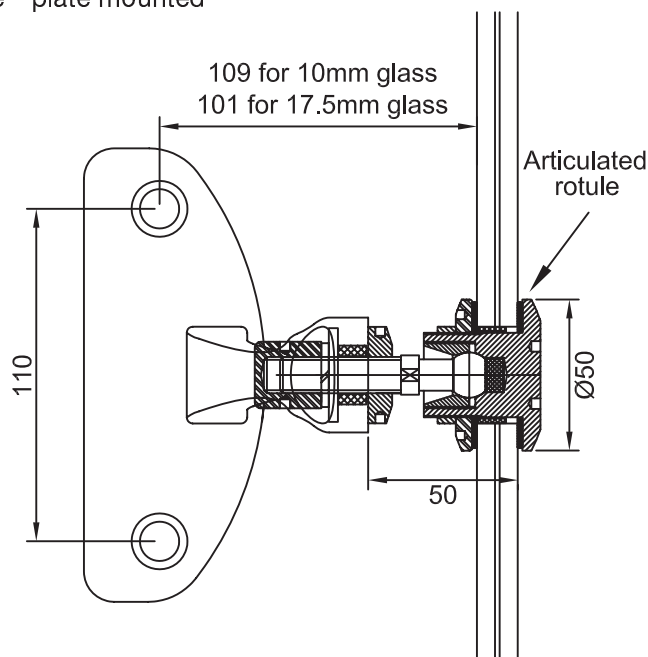
SPYDER FNZCX1G One way spyder fitting with rotule - plate mounted

AVAILABLE FINISHES

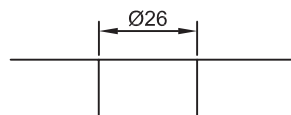
- Satin stainless steel
- Polished stainless steel (subject to price and leadtime)

TECHNICAL DETAILS

- 316 stainless steel
- Supplied with flat head articulated rotules
- CXFHABM12 articulated rotule takes 10mm to 17.5mm glass thicknesses
- Glass fin hole diameter 26mm (see detail below)
- Spyder fits to 15mm and 19mm glass fins



Facade glass hole



Fin hole

SPYDER FNZCX2G Two way 90° spyder fitting with rotule - plate mounted

AVAILABLE FINISHES

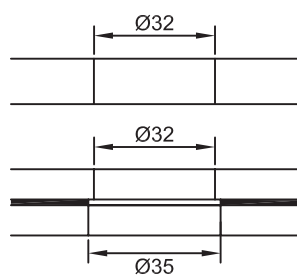
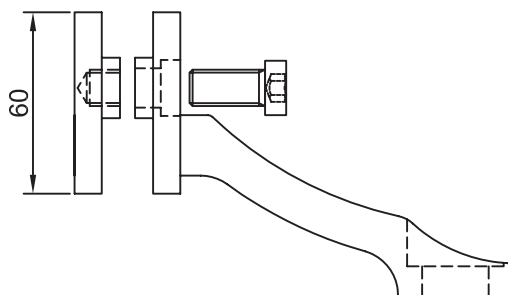
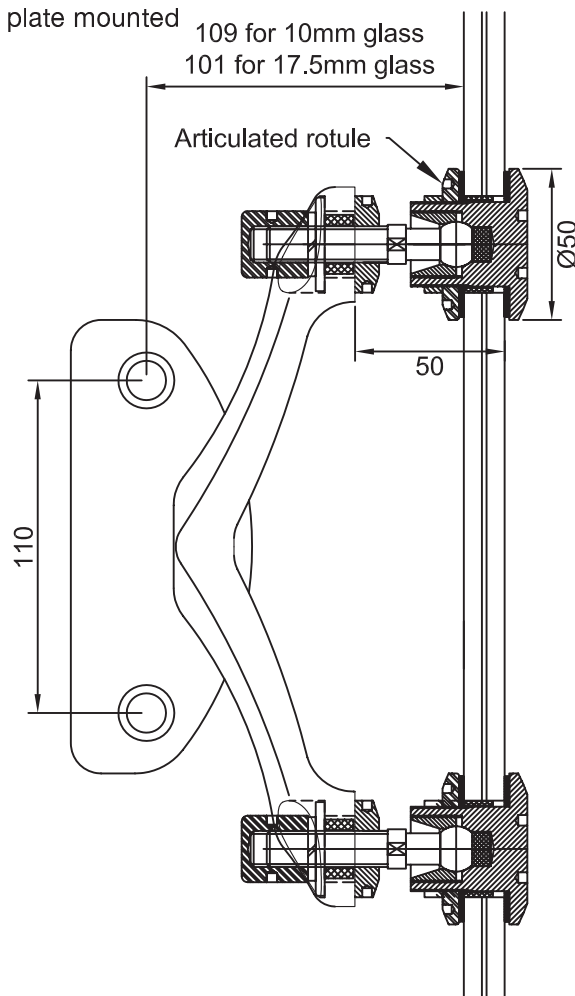
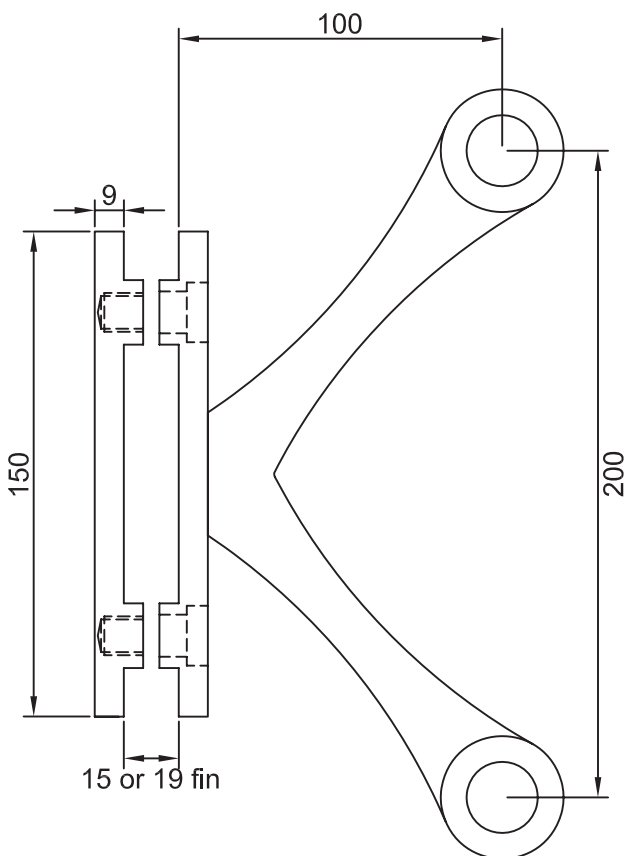
- Satin stainless steel
- Polished stainless steel (subject to price and leadtime)

TECHNICAL DETAILS

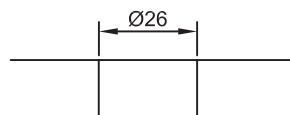
- 316 stainless steel
- Supplied with flat head articulated rotules
- CXFHABM12 articulated rotule takes 10mm to 17.5mm glass thicknesses
- Glass fin hole diameter 26mm (see detail below)
- Spyder fits to 15mm and 19mm glass fins

109 for 10mm glass
 101 for 17.5mm glass

Articulated rotule



Facade glass hole



Fin hole

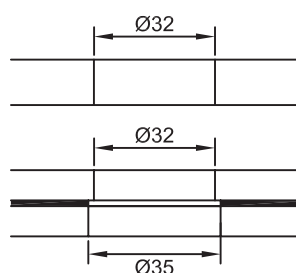
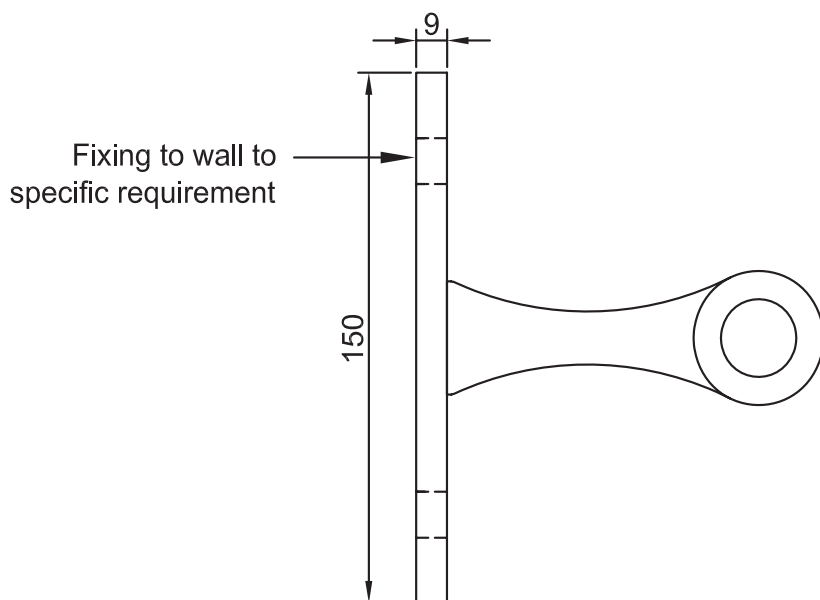
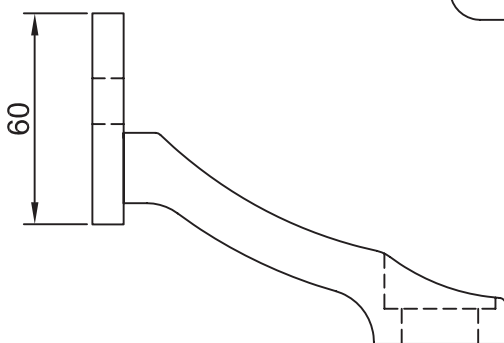
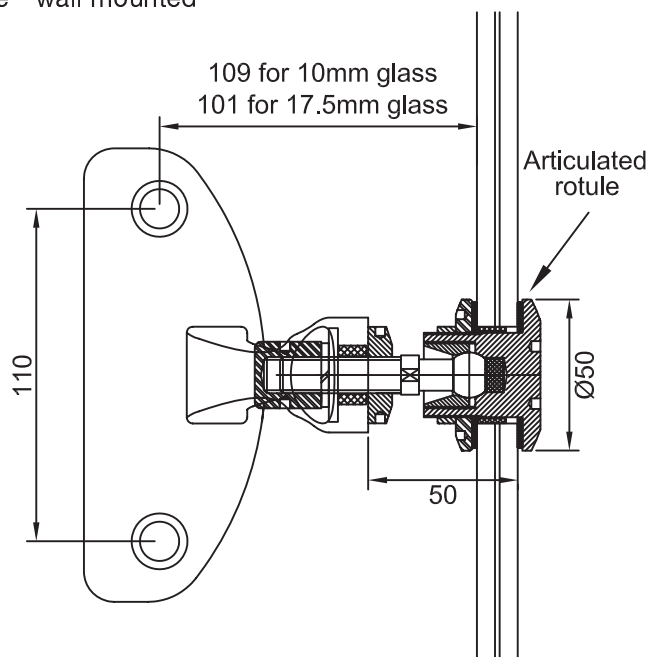
SPYDER FNZCX1W One way spyder fitting with rotule - wall mounted

AVAILABLE FINISHES

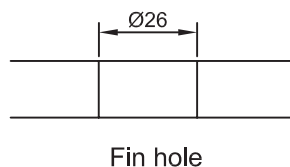
- Satin stainless steel
- Polished stainless steel (subject to price and leadtime)

TECHNICAL DETAILS

- 316 stainless steel
- Supplied with flat head articulated rotules
- CXFHABM12 articulated rotule takes 10mm to 17.5mm glass thicknesses
- Glass fin hole diameter 26mm (see detail below)
- Spyder fits to 15mm and 19mm glass fins



Facade glass hole



Fin hole

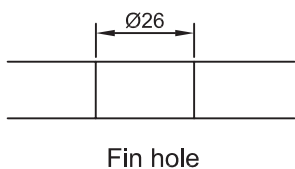
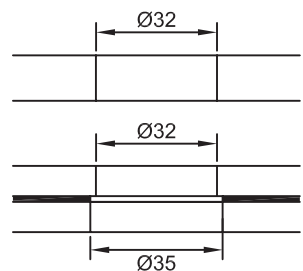
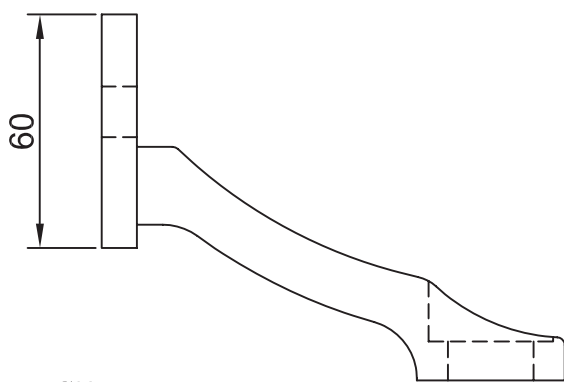
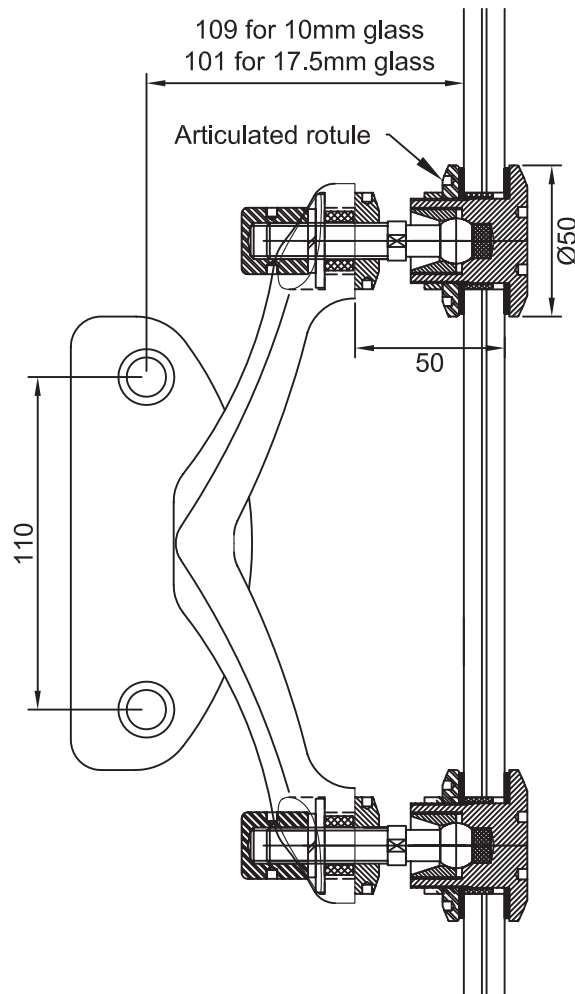
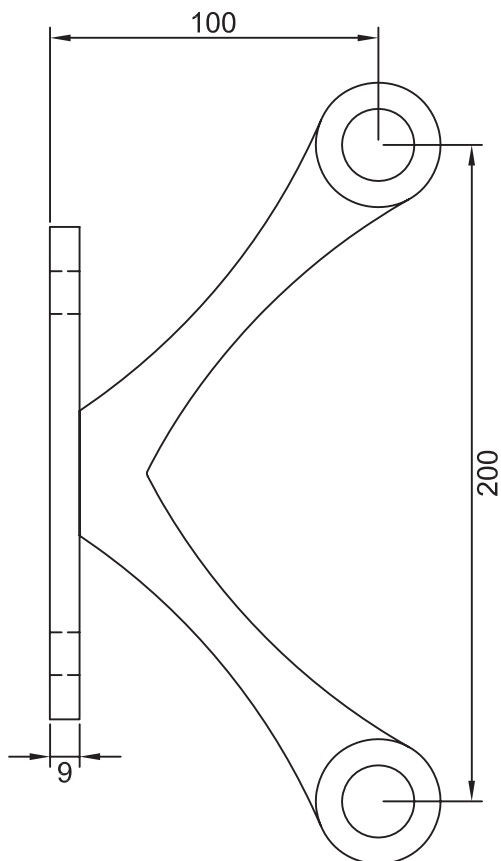
SPYDER FNZCX2W Two way 90° spyder fitting with rotule - wall mounted

AVAILABLE FINISHES

- Satin stainless steel
- Polished stainless steel (subject to price and leadtime)

TECHNICAL DETAILS

- 316 stainless steel
- Supplied with flat head articulated rotules
- CXFHABM12 articulated rotule takes 10mm to 17.5mm glass thicknesses
- Glass fin hole diameter 26mm (see detail below)
- Spyder fits to 15mm and 19mm glass fins



Facade glass hole

Fin hole