

louvretec slimline 60 sliding door & shutter systems

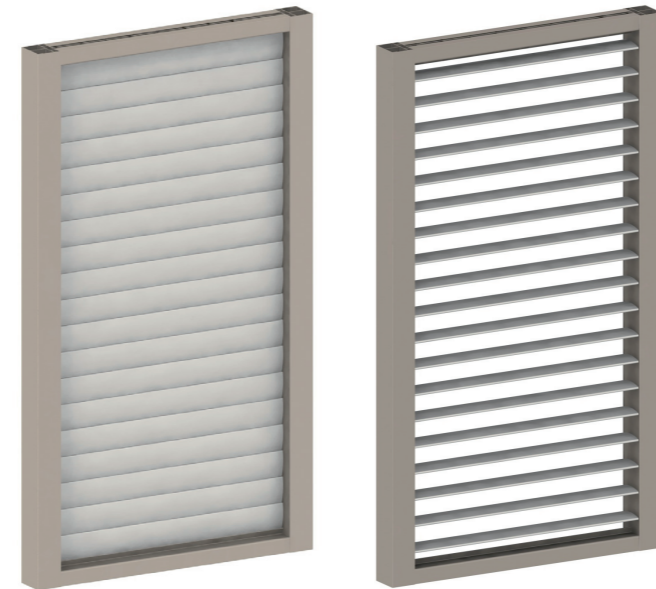
// HOW THE SYSTEM WORKS

Slimline60™
PIVOT SYSTEM

SLIMLINE 60 SMART SHUTTER DESIGN

This smaller blade version of the Superslider 100 comes with its own unique features.

- 1 **LOUVRES FIT WITHIN THE FRAME**
Even when fully open the 58mm louvre blades do not protrude beyond the door frame width.
- 2 **INTERNAL PIVOT SYSTEM**
The same internal geared rack and pinion pivot system used in the Superslider 100 also is used to operate the Slimline 60.
- 3 **OPTIONAL LOUVRE ADJUSTMENT**
Choose to either open or close the blades by adjusting the louvre itself, or use the Louvre Adjustment Dial – refer fig 5.
- 4 **FIXED BLADES**
The Slimline 60 also incorporates a unique packer system for Fixed Blade options, providing a strong economical fixed panel.



PANEL BLADES OPEN

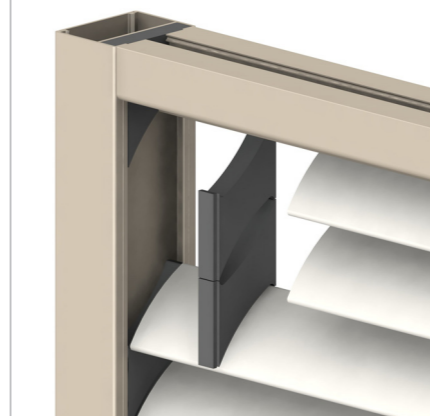
BLADES CLOSED

TWO PANEL SLIDING DOOR



- 1 **FIXED BLADES**
The Slimline packer system is incorporated in the frame design fixing the blades at 58mm centres and 45 degrees pitch.
- 2 **ADJUSTABLE BLADES**
The internal geared rack and pinion pivot system allows for easy operation. Larger panels can be segmented with top and bottom opening independently.
- 3 **TOP HUNG RESIDENTIAL**
There are two top track options – one as shown incorporating a built in head and sill frame.
- 4 **TOP HUNG COMMERCIAL**
The same heavy duty Glidetec beveled top hung track technology used on the Superslider 100 can also be used with the Slimline 60.
- 5 **LOUVRE ADJUSTMENT**
An optional Louvre Adjustment Dial is available. Ideal when including insect mesh or s/s security mesh to the door frame.
- 6 **SLIDELOCK-FLUSH BOLTS**
A range of security locking options are available for both the louvre blades and the door frame.

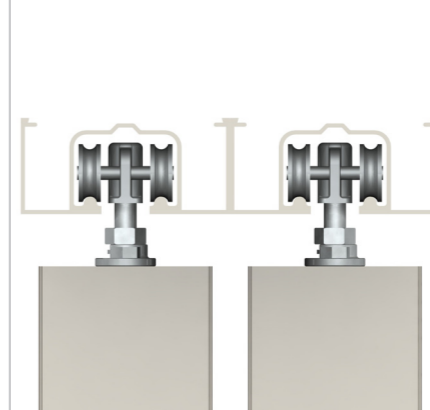
1 FIXED BLADES



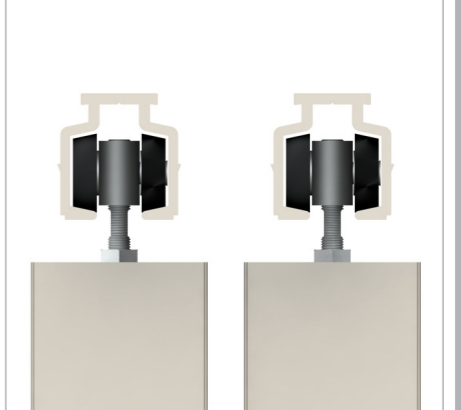
2 ADJUSTABLE BLADES



3 TOP HUNG RESIDENTIAL



4 TOP HUNG COMMERCIAL



5 LOUVRE ADJUSTMENT DIAL



6 SLIDELOCK – FLUSH BOLTS

